



Annex D: Photo documentation

Photo 1: Measurement System OPENSAR



Photo 2: Front view



Photo 3: Rear View



Photo 4: Left Head Touched

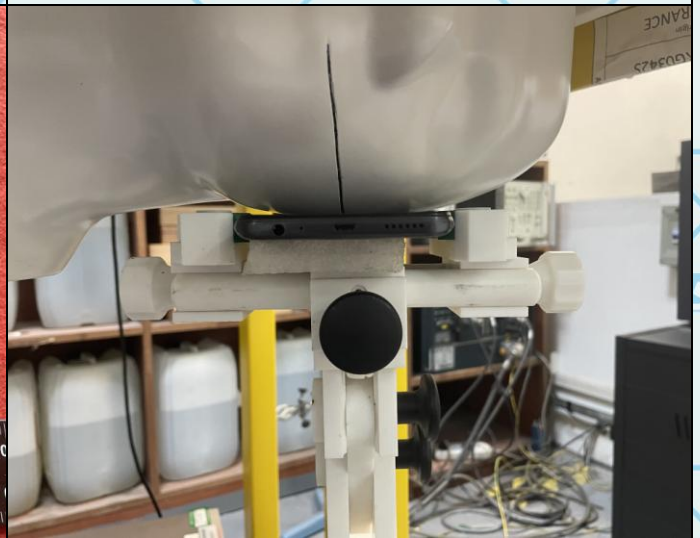




Photo 5: Left Head Tilted 15°



Photo 6: Right Head Touched

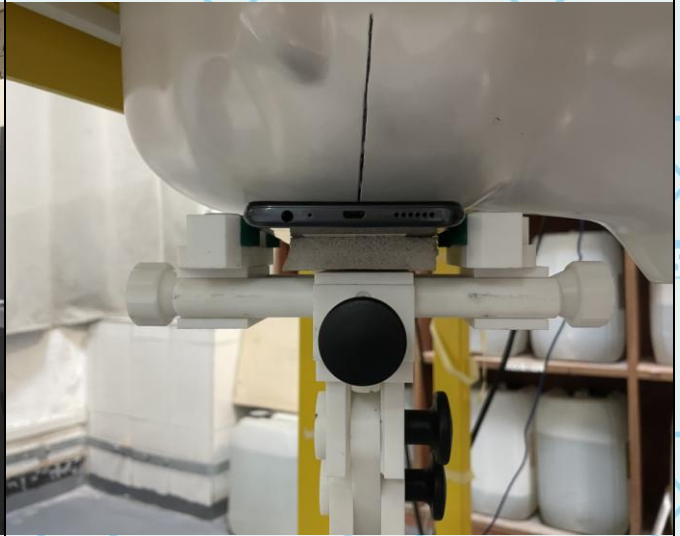


Photo 7: Right Head Tilted 15°



Photo 7: Towards Phantom 10mm





Photo 9: Towards Ground 10mm

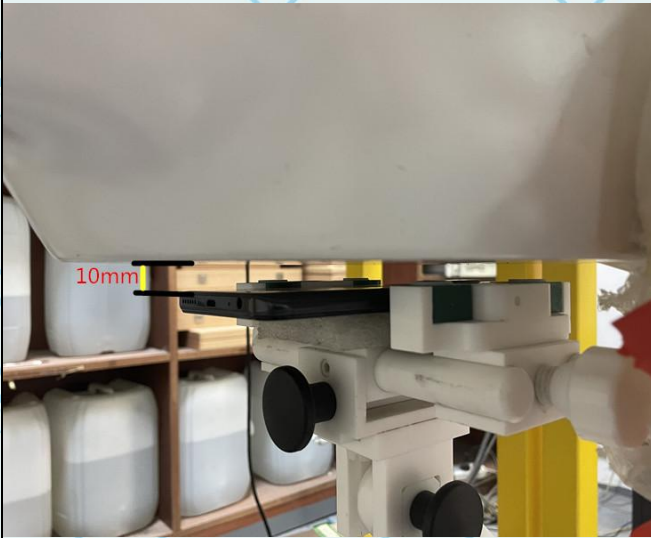


Photo 10: Right Side 10mm

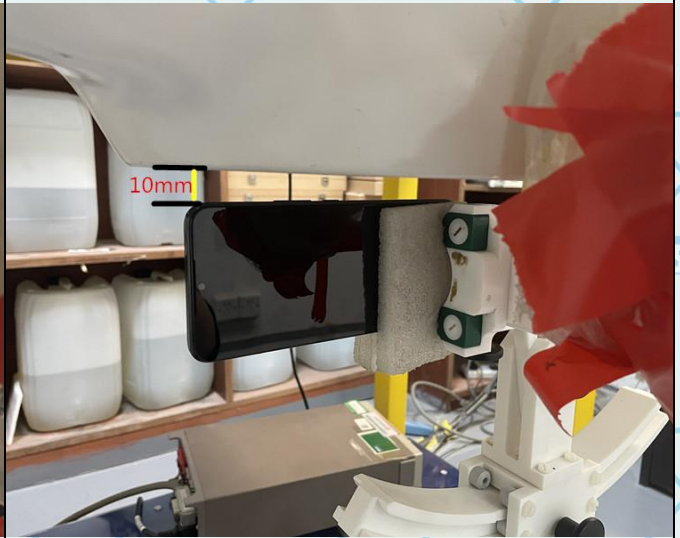


Photo 11: Left Side 10mm



Photo 8: Top Side 10mm





Photo 13: Bottom Side 10mm

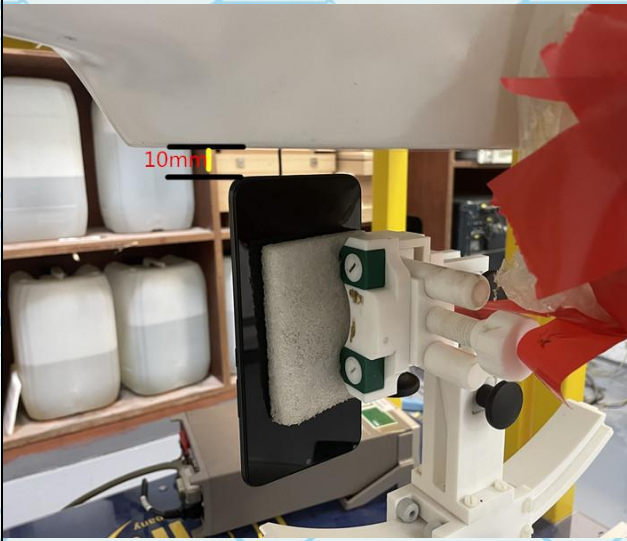


Photo 14: 850MHz Liquid Depth ≥ 15.0cm

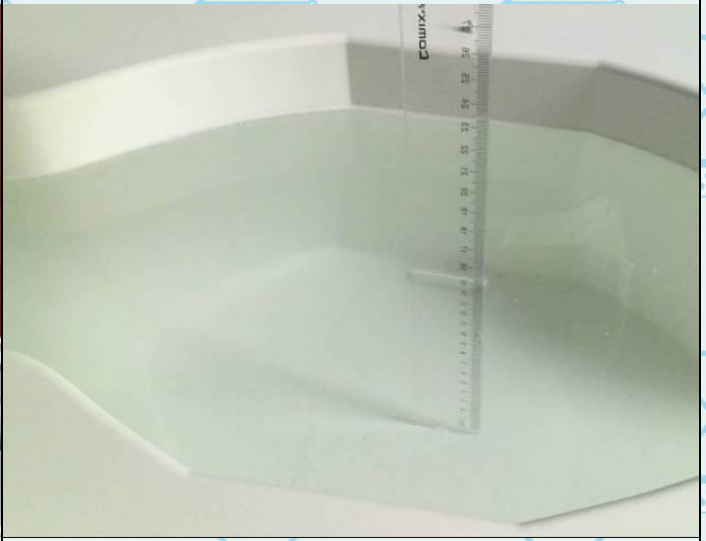


Photo 15: 1800~1900MHz Liquid Depth ≥ 15.0cm



Photo 16: 2450MHz Liquid Depth ≥ 15.0cm

