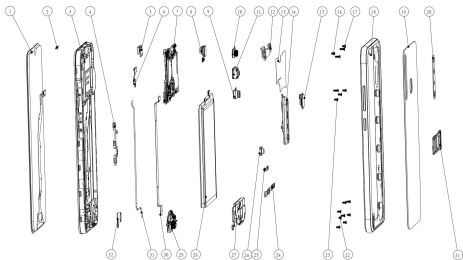
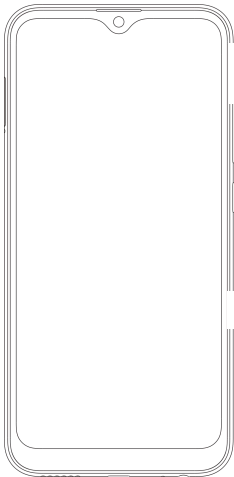


# Explosion diagram specification



1	FL(CTP+LCM) 6.217HD+ black TCL	2	REC deco black
3	F hsg asm black	4	Side key fpc
5	REC	6	FPC Light sense
7	PCBA MAIN	8	Front CAM FF 8M
9	CAM FF 8M	10	CAM FF 2M
11	CAM AF 13M	12	CAM frame
13	PCBA MB radiating film	14	R cam deco asm
15	Fingerprint module	16	Screw M1.4*L2.0*D2.5*H0.5
17	Screw M1.4*L3.5*D2.5*H0.5	18	Bat cover asm
19	Batcoverasm compositeboard	20	R Cam lens
21	Card holder	22	Screw M1.4*L1.5*D3.0*H0.5
23	Screw M1.4*L2.5*D2.5*H0.5	24	BAT con imp steel
25	FP con imp steel	26	R flash lens
27	SPK BOX	28	Battery
29	PCBA SUB	30	FPC MAIN
31	coaxial cable	32	Motor

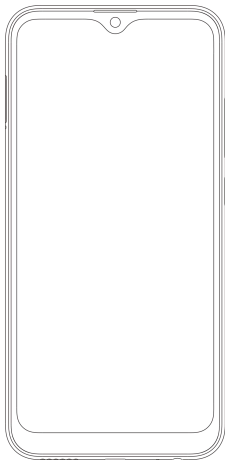
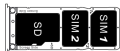
# Know your phone



1. Front camera
2. Flash
3. Volume + key
4. Volume - key
5. Power key

# SIM/SD card installation

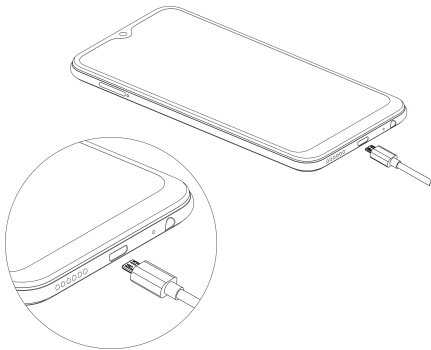
1. Power off mobile.
2. Refer to the following picture for SIM / SD card installation.



# Charging the phone

You can charge your device using a charger or by connecting it to the computer using a USB cable (comes with the phone).

1. Please remind the front and back of the plug.
2. Use only INFINIX charger and cables. Other chargers or cables may damage the device. This will invalidate your phone warranty.



# FCC Caution

## **Labelling requirements.**

This device complies with part 15 of the FCC Rules. Operation is subject to following two conditions:(1)This device may not cause harmful interference and (2) this device must accept any interference received, including interference that may cause undersired operation.

## **Information to user.**

Any changes or modifications not expressly approved by the party responsible for compliance could void the user's authority to operate the equipment.

## **Information to the user.**

Note: This equipment has been tested and found to comply with the limits for a Class B digital device, pursuant to part 15 of the FCC Rules. These limits are designed to provide reasonable protection against harmful interference in a residential installation. This equipment generates uses and can radiate radio frequency energy and, if not installed and used in accordance with the instructions, may cause harmful interference to radio communications. However, there is no guarantee that interference will not occur in a particular installation. If this equipment does cause harmful interference to radio or television reception, which can be determined by turning the equipment off and on, the user is encouraged to try to correct the interference by one or more of the following measures:

- Reorient or relocate the receiving antenna.
- Increase the separation between the equipment and receiver.
- Connect the equipment into an outlet on a circuit different from that to which the receiver is connected.
- Consult the dealer or an experienced radio/TV technician for help.

## **Specific Absorption Rate (SAR) information:**

This mobile phone meets the government's requirements for exposure to radio waves. The guidelines are based on standards that were developed by independent scientific organizations through periodic and thorough evaluation of scientific studies. The standards include a substantial safety margin designed to assure the safety of all persons regardless of age or health.

FCC RF Exposure Information and Statement The SAR limit of USA (FCC) is 1.6W/kg averaged over one gram of tissue. Device types:X627(FCC ID: 2AIZN-X627 has also been tested against this SAR limit. The highest SAR value reported under this standard during product certification for use at the ear is 0.91W/kg and when properly worn on the body is 0.32W/kg. This device was tested for typical body-worn operations with the back of the handset kept 10mm from the body. To maintain compliance with FCC RF exposure requirements, use accessories that maintain a 10mm separation distance between the user's body and the back of the handset. The use of belt clips, holsters and similar accessories should not contain metallic components in its assembly. The use of accessories that does not satisfy these requirements may not comply with FCC RF exposure requirements, and should be avoided.