



SATIMO 225, rue Pierre Rivoalon 29200 Brest - France  
Tel: +33 (0)2 98 05 13 34; Fax: +33 (0)2 98 05 53 87; www.satimo.com



## **Annex A: System Check**

**Tested Model : X620B**

**Report Number:**

**FCC18070037A-SAR**

## MEASUREMENT 1

### BODY

Type: Validation measurement (Complete)

Date of measurement: 19/7/2018

Measurement duration: 11 minutes 38 seconds

### **A. Experimental conditions.**

<b><u>Area Scan</u></b>	<u>dx=8mm dy=8mm</u>
<b><u>ZoomScan</u></b>	<u>5x5x7, dx=8mm dy=8mm</u> <u>dz=5mm, Complete</u>
<b><u>Phantom</u></b>	<u>Validation plane</u>
<b><u>Device Position</u></b>	<u>Dipole</u>
<b><u>Band</u></b>	<u>CW835</u>
<b><u>Channels</u></b>	<u>Middle</u>
<b><u>Signal</u></b>	<u>CW (Crest factor: 1.0)</u>

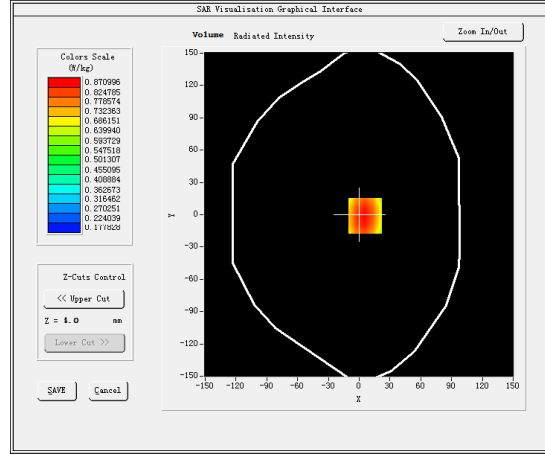
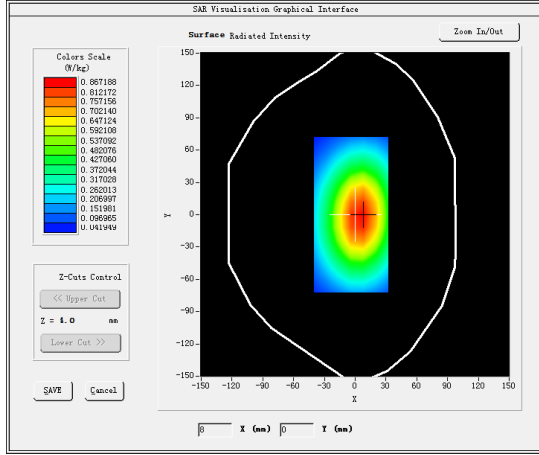
### **B. SAR Measurement Results**

Middle Band SAR (Channel -1):

<b>Frequency (MHz)</b>	835.000000
<b>Relative permittivity (real part)</b>	53.458401
<b>Relative permittivity (imaginary part)</b>	20.503000
<b>Conductivity (S/m)</b>	0.951111
<b>Variation (%)</b>	-1.520000

### SURFACE SAR

### VOLUME SAR

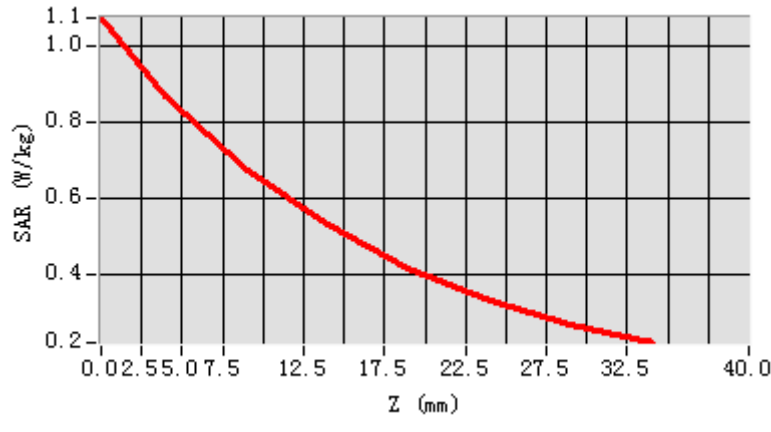


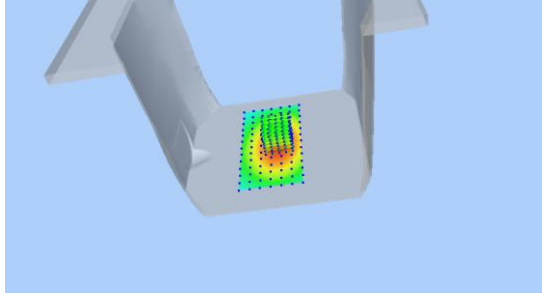

**Maximum location: X=6.00, Y=-1.00**

**SAR Peak: 1.08 W/kg**

<b>SAR 10g (W/Kg)</b>	0.629766
<b>SAR 1g (W/Kg)</b>	0.846036

<b>Z (mm)</b>	<b>0.00</b>	<b>4.00</b>	<b>9.00</b>	<b>14.00</b>	<b>19.00</b>	<b>24.00</b>	<b>29.00</b>
<b>SAR (W/Kg)</b>	<b>1.0747</b>	<b>0.8710</b>	<b>0.6744</b>	<b>0.5294</b>	<b>0.4173</b>	<b>0.3335</b>	<b>0.2689</b>



3D screen shot	Hot spot position
	

## MEASUREMENT 2

### HEAD

Type: Validation measurement (Complete)

Date of measurement: 19/7/2018

Measurement duration: 11 minutes 38 seconds

### A. Experimental conditions.

<b><u>Area Scan</u></b>	<u>dx=8mm dy=8mm</u>
<b><u>ZoomScan</u></b>	<u>5x5x7,dx=8mm dy=8mm dz=5mm,Complete</u>
<b><u>Phantom</u></b>	<u>Validation plane</u>
<b><u>Device Position</u></b>	<u>Dipole</u>
<b><u>Band</u></b>	<u>CW835</u>
<b><u>Channels</u></b>	<u>Middle</u>
<b><u>Signal</u></b>	<u>CW (Crest factor: 1.0)</u>

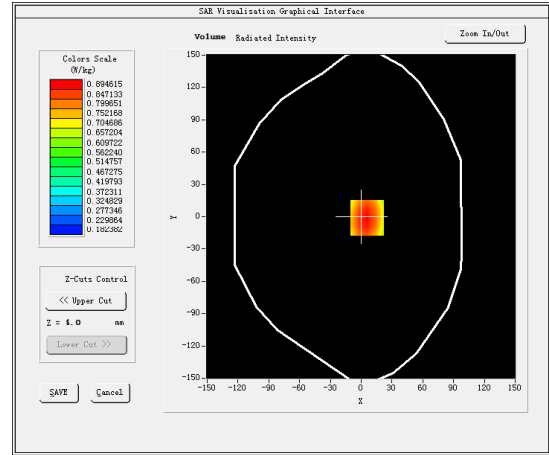
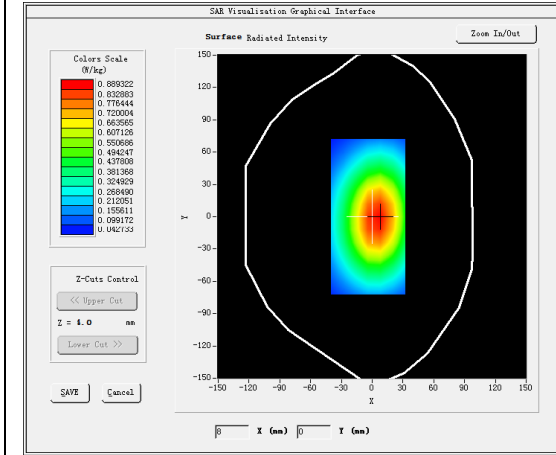
### B. SAR Measurement Results

Middle Band SAR (Channel -1):

<b>Frequency (MHz)</b>	835.000000
<b>Relative permittivity (real part)</b>	40.441299
<b>Relative permittivity (imaginary part)</b>	20.606899
<b>Conductivity (S/m)</b>	0.955931
<b>Variation (%)</b>	-1.660000

### SURFACE SAR

### VOLUME SAR

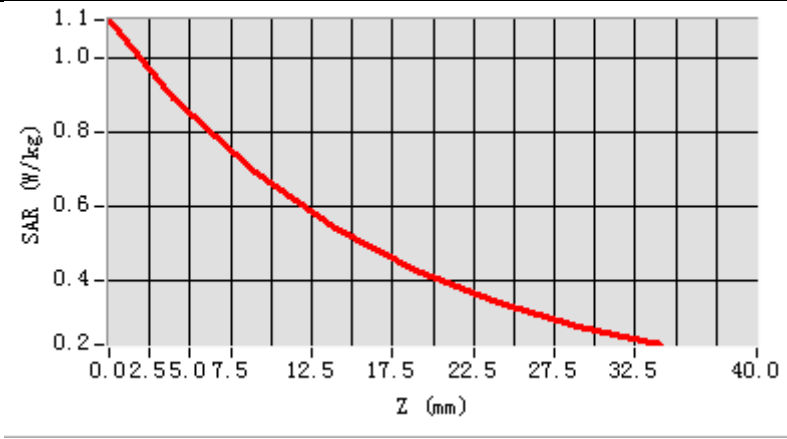


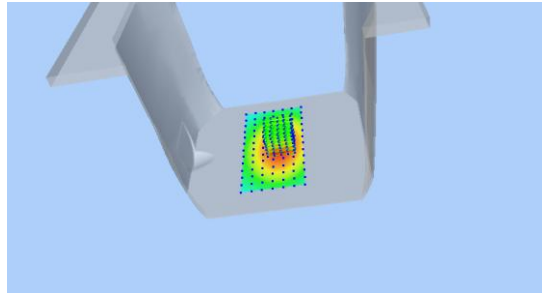

**Maximum location: X=6.00, Y=-1.00**

**SAR Peak: 1.11 W/kg**

<b>SAR 10g (W/Kg)</b>	0.671843
<b>SAR 1g (W/Kg)</b>	0.912096

<b>Z (mm)</b>	<b>0.00</b>	<b>4.00</b>	<b>9.00</b>	<b>14.00</b>	<b>19.00</b>	<b>24.00</b>	<b>29.00</b>
<b>SAR (W/Kg)</b>	<b>1.1043</b>	<b>0.8946</b>	<b>0.6925</b>	<b>0.5438</b>	<b>0.4287</b>	<b>0.3424</b>	<b>0.2762</b>



<b>3D screen shot</b>	<b>Hot spot position</b>
	

## MEASUREMENT 3

### BODY

Type: Validation measurement (Complete)

Date of measurement: 18/7/2018

Measurement duration: 9 minutes 55 seconds

### A. Experimental conditions.

<b><u>Area Scan</u></b>	<u>dx=8mm dy=8mm</u>
<b><u>ZoomScan</u></b>	<u>5x5x7,dx=8mm dy=8mm dz=5mm,Complete</u>
<b><u>Phantom</u></b>	<u>Validation plane</u>
<b><u>Device Position</u></b>	<u>Dipole</u>
<b><u>Band</u></b>	<u>CW1800</u>
<b><u>Channels</u></b>	<u>Middle</u>
<b><u>Signal</u></b>	<u>CW (Crest factor: 1.0)</u>

### B. SAR Measurement Results

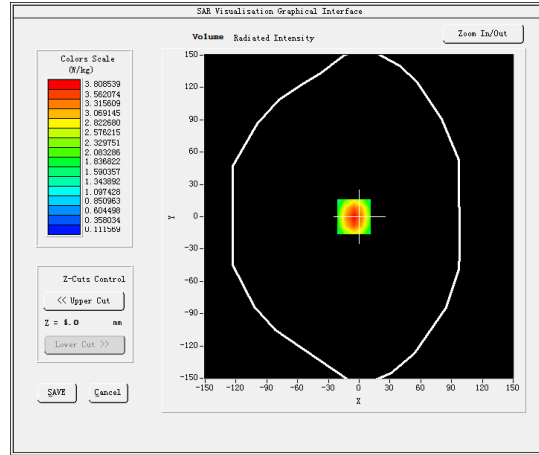
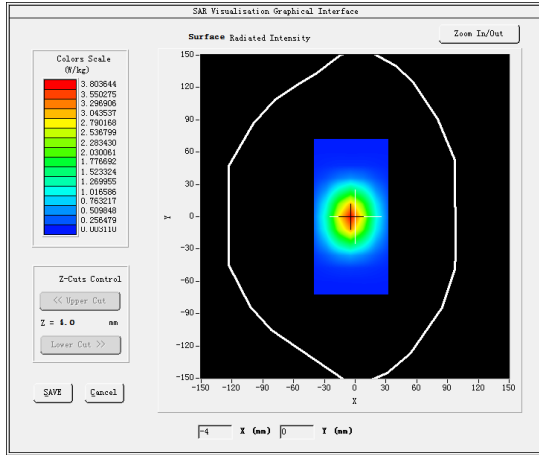
Middle Band SAR (Channel -1):

<b>Frequency (MHz)</b>	1800.000000
<b>Relative permittivity (real part)</b>	51.817001
<b>Relative permittivity (imaginary part)</b>	14.793100
<b>Conductivity (S/m)</b>	1.479310
<b>Variation (%)</b>	-0.980000



### SURFACE SAR

### VOLUME SAR

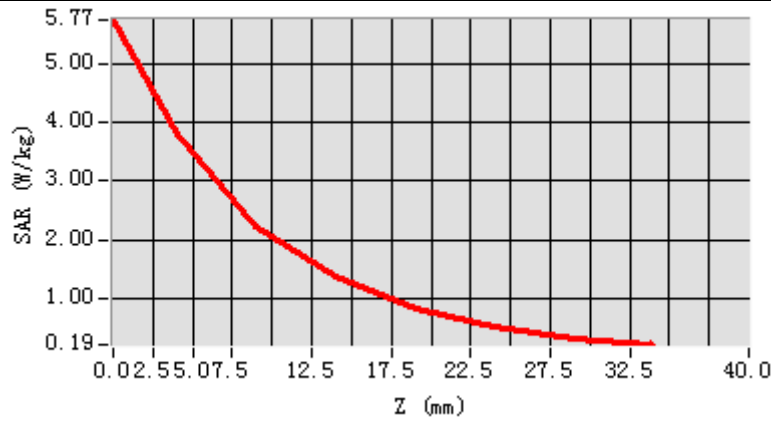


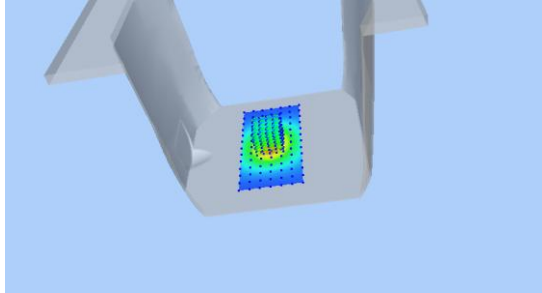
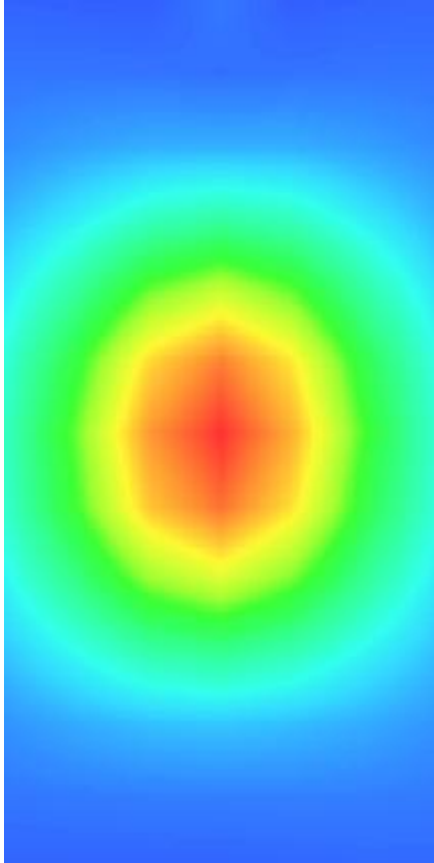
**Maximum location: X=-5.00, Y=0.00**

**SAR Peak: 5.73 W/kg**

<b>SAR 10g (W/Kg)</b>	2.053041
<b>SAR 1g (W/Kg)</b>	3.626206

<b>Z (mm)</b>	<b>0.00</b>	<b>4.00</b>	<b>9.00</b>	<b>14.00</b>	<b>19.00</b>	<b>24.00</b>	<b>29.00</b>
<b>SAR (W/Kg)</b>	<b>5.7673</b>	<b>3.8085</b>	<b>2.2370</b>	<b>1.3499</b>	<b>0.8212</b>	<b>0.5057</b>	<b>0.3120</b>



3D screen shot	Hot spot position
	

## MEASUREMENT 4

### HEAD

Type: Validation measurement (Complete)

Date of measurement: 18/7/2018

Measurement duration: 10 minutes 1 seconds

#### **A. Experimental conditions.**

<b><u>Area Scan</u></b>	<u>dx=8mm dy=8mm</u>
<b><u>ZoomScan</u></b>	<u>5x5x7, dx=8mm dy=8mm dz=5mm, Complete</u>
<b><u>Phantom</u></b>	<u>Validation plane</u>
<b><u>Device Position</u></b>	<u>Dipole</u>
<b><u>Band</u></b>	<u>CW1800</u>
<b><u>Channels</u></b>	<u>Middle</u>
<b><u>Signal</u></b>	<u>CW (Crest factor: 1.0)</u>

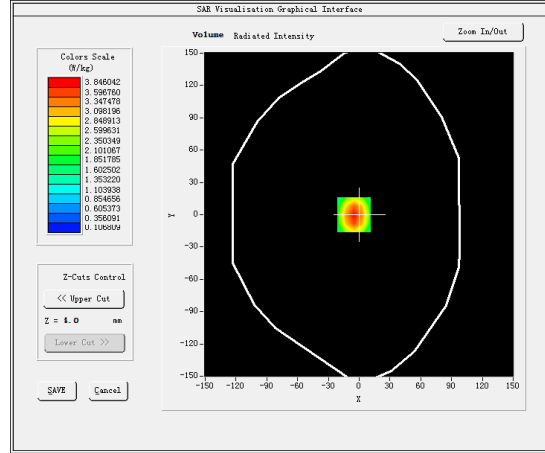
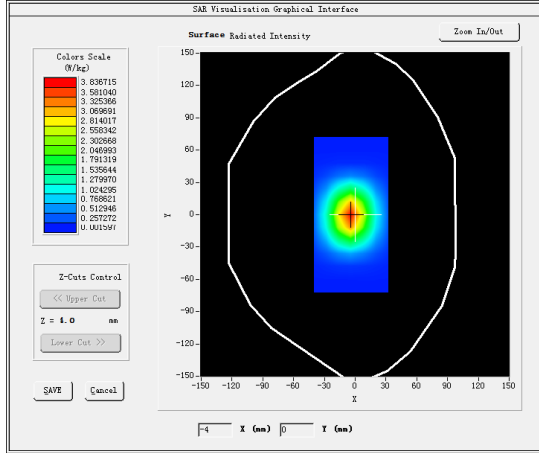
#### **B. SAR Measurement Results**

Middle Band SAR (Channel -1):

<b>Frequency (MHz)</b>	1800.000000
<b>Relative permittivity (real part)</b>	40.010899
<b>Relative permittivity (imaginary part)</b>	14.019000
<b>Conductivity (S/m)</b>	1.401900
<b>Variation (%)</b>	-0.990000

### SURFACE SAR

### VOLUME SAR

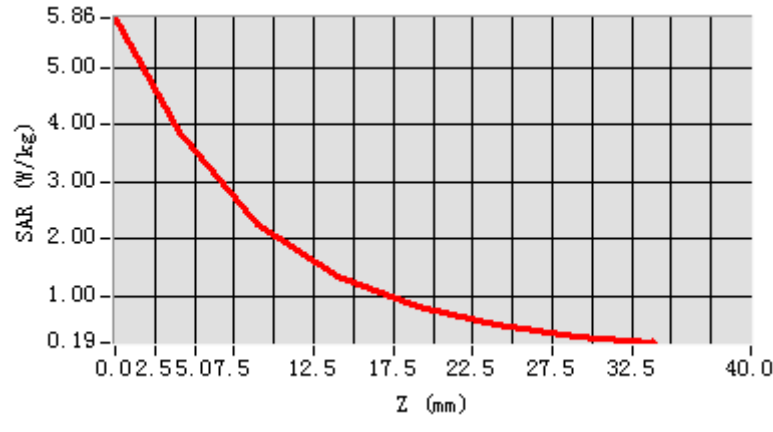


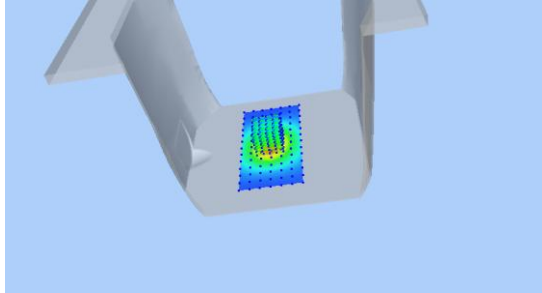
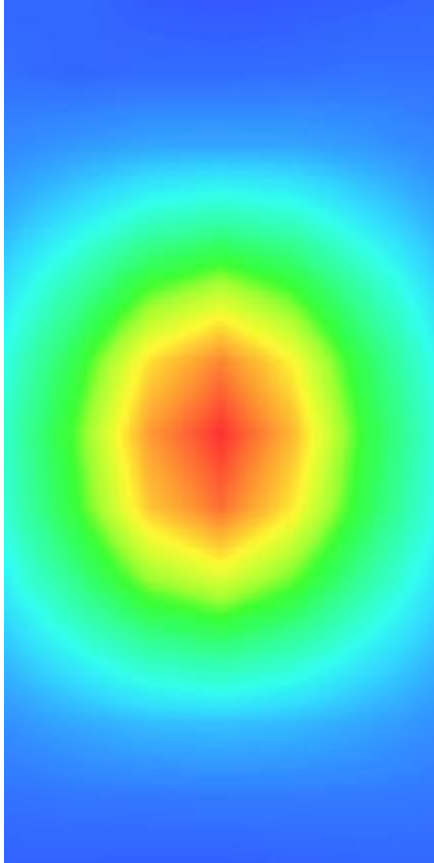
**Maximum location: X=-5.00, Y=0.00**

**SAR Peak: 5.82 W/kg**

<b>SAR 10g (W/Kg)</b>	2.056570
<b>SAR 1g (W/Kg)</b>	3.669582

Z (mm)	0.00	4.00	9.00	14.00	19.00	24.00	29.00
SAR (W/Kg)	5.8572	3.8460	2.2420	1.3435	0.8146	0.5006	0.3079



3D screen shot	Hot spot position
	

## MEASUREMENT 5

### BODY

Type: Validation measurement (Complete)

Date of measurement: 18/7/2018

Measurement duration: 9 minutes 55 seconds

### A. Experimental conditions.

<b><u>Area Scan</u></b>	<u>dx=8mm dy=8mm</u>
<b><u>ZoomScan</u></b>	<u>5x5x7,dx=8mm dy=8mm dz=5mm,Complete</u>
<b><u>Phantom</u></b>	<u>Validation plane</u>
<b><u>Device Position</u></b>	<u>Dipole</u>
<b><u>Band</u></b>	<u>CW1900</u>
<b><u>Channels</u></b>	<u>Middle</u>
<b><u>Signal</u></b>	<u>CW (Crest factor: 1.0)</u>

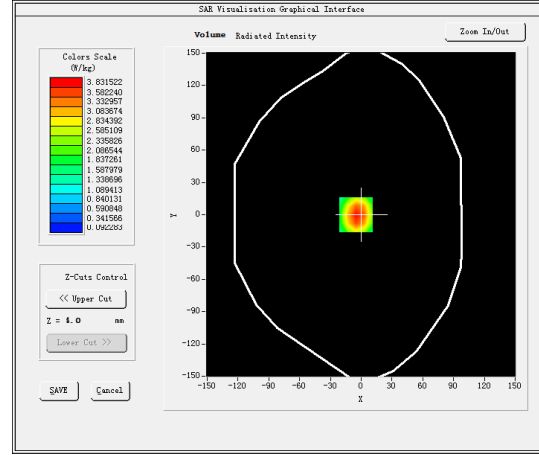
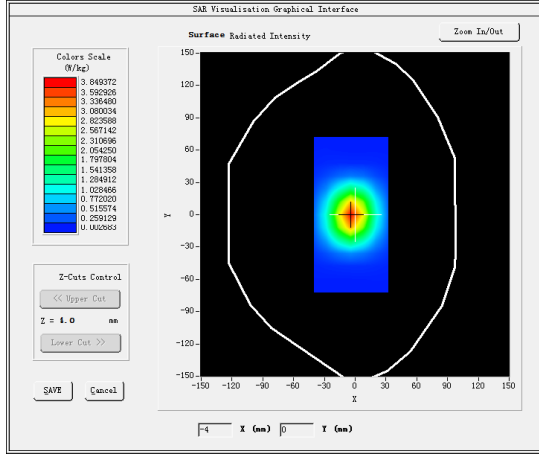
### B. SAR Measurement Results

Middle Band SAR (Channel -1):

<b>Frequency (MHz)</b>	1900.000000
<b>Relative permittivity (real part)</b>	52.199100
<b>Relative permittivity (imaginary part)</b>	14.615200
<b>Conductivity (S/m)</b>	1.542716
<b>Variation (%)</b>	-0.660000

### SURFACE SAR

### VOLUME SAR

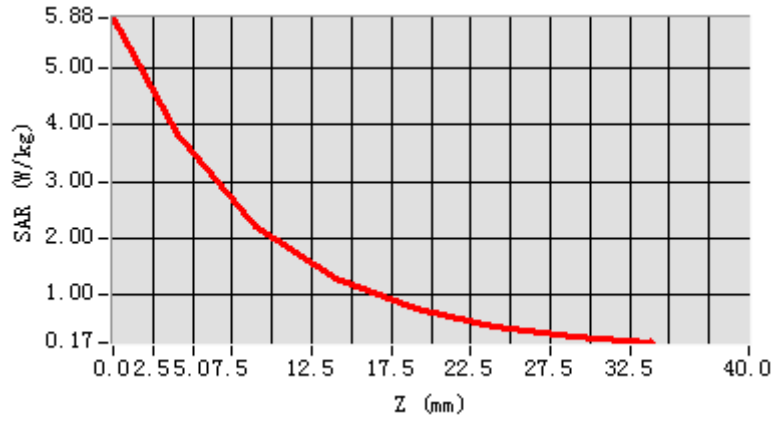


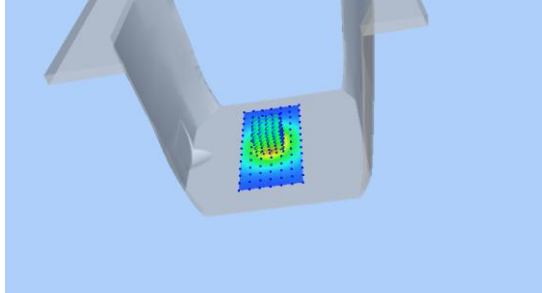
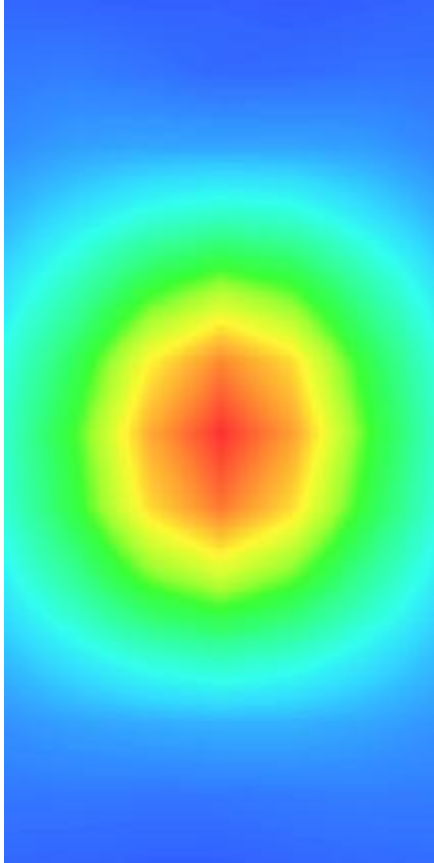
**Maximum location: X=-5.00, Y=0.00**

**SAR Peak: 5.90 W/kg**

<b>SAR 10g (W/Kg)</b>	2.047070
<b>SAR 1g (W/Kg)</b>	3.720274

Z (mm)	0.00	4.00	9.00	14.00	19.00	24.00	29.00
SAR (W/Kg)	5.8752	3.8315	2.2043	1.3005	0.7705	0.4595	0.2763



3D screen shot	Hot spot position
	



## MEASUREMENT 6

### HEAD

Type: Validation measurement (Complete)

Date of measurement: 18/7/2018

Measurement duration: 9 minutes 56 seconds

#### **A. Experimental conditions.**

<b><u>Area Scan</u></b>	<u>dx=8mm dy=8mm</u>
<b><u>ZoomScan</u></b>	<u>5x5x7, dx=8mm dy=8mm dz=5mm, Complete</u>
<b><u>Phantom</u></b>	<u>Validation plane</u>
<b><u>Device Position</u></b>	<u>Dipole</u>
<b><u>Band</u></b>	<u>CW1900</u>
<b><u>Channels</u></b>	<u>Middle</u>
<b><u>Signal</u></b>	<u>CW (Crest factor: 1.0)</u>

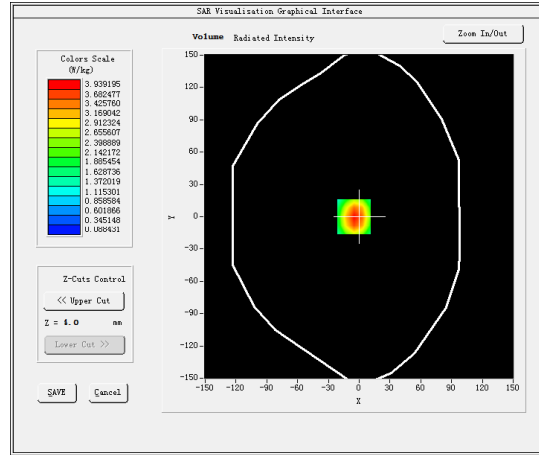
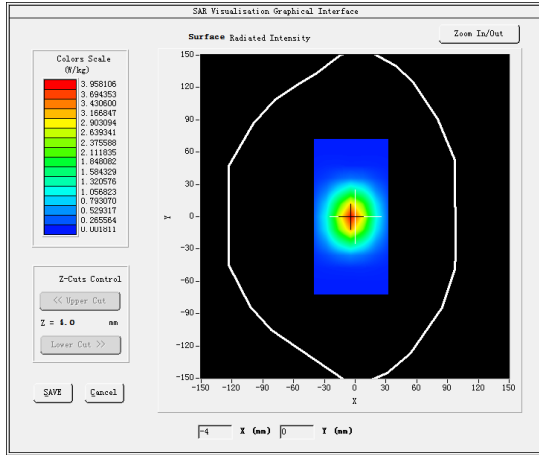
#### **B. SAR Measurement Results**

Middle Band SAR (Channel -1):

<b>Frequency (MHz)</b>	1900.000000
<b>Relative permittivity (real part)</b>	39.880501
<b>Relative permittivity (imaginary part)</b>	13.326500
<b>Conductivity (S/m)</b>	1.406686
<b>Variation (%)</b>	-0.860000

### SURFACE SAR

### VOLUME SAR

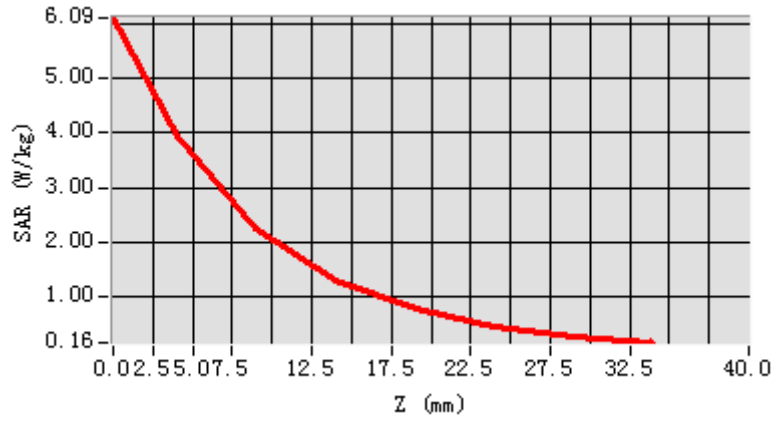


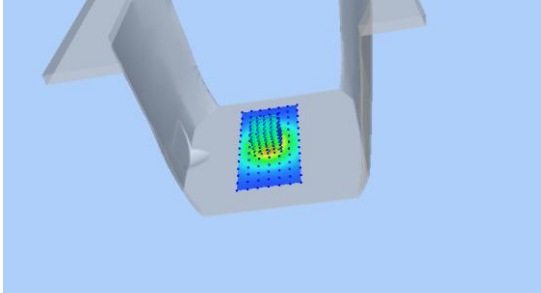
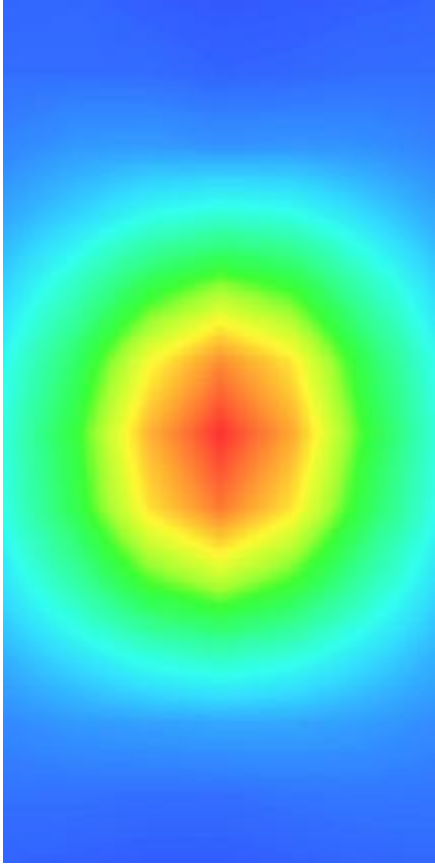
**Maximum location: X=-5.00, Y=0.00**

**SAR Peak: 6.12 W/kg**

<b>SAR 10g (W/Kg)</b>	2.063282
<b>SAR 1g (W/Kg)</b>	3.782124

<b>Z (mm)</b>	<b>0.00</b>	<b>4.00</b>	<b>9.00</b>	<b>14.00</b>	<b>19.00</b>	<b>24.00</b>	<b>29.00</b>
<b>SAR (W/Kg)</b>	<b>6.0938</b>	<b>3.9392</b>	<b>2.2387</b>	<b>1.3105</b>	<b>0.7704</b>	<b>0.4580</b>	<b>0.2736</b>



3D screen shot	Hot spot position
	

## MEASUREMENT 7

### BODY

Type: Validation measurement (Complete)

Date of measurement: 23/7/2018

Measurement duration: 9 minutes 58 seconds

### A. Experimental conditions.

<b><u>Area Scan</u></b>	<u>dx=8mm dy=8mm</u>
<b><u>ZoomScan</u></b>	<u>5x5x7,dx=8mm dy=8mm dz=5mm,Complete</u>
<b><u>Phantom</u></b>	<u>Validation plane</u>
<b><u>Device Position</u></b>	<u>Dipole</u>
<b><u>Band</u></b>	<u>CW2450</u>
<b><u>Channels</u></b>	<u>Middle</u>
<b><u>Signal</u></b>	<u>CW (Crest factor: 1.0)</u>

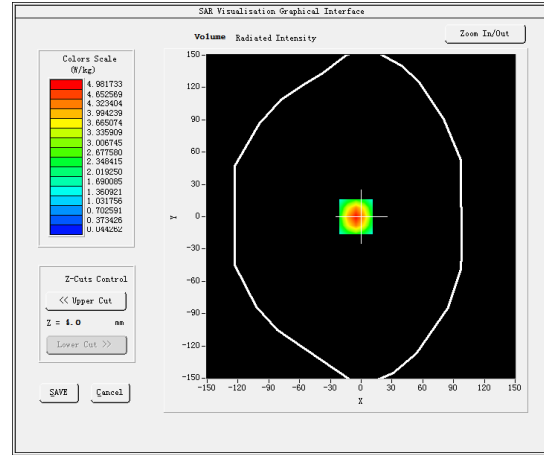
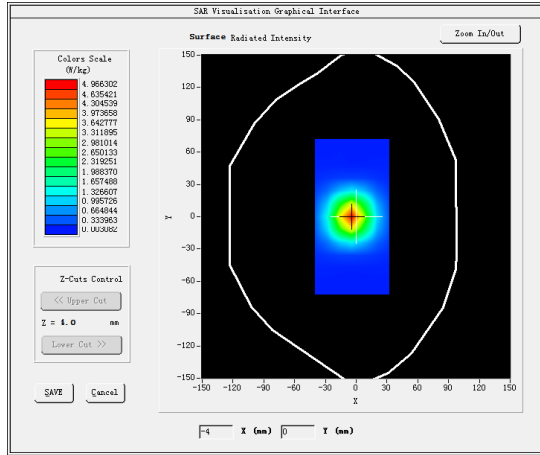
### B. SAR Measurement Results

Middle Band SAR (Channel -1):

<b>Frequency (MHz)</b>	2450.000000
<b>Relative permittivity (real part)</b>	52.735699
<b>Relative permittivity (imaginary part)</b>	14.017300
<b>Conductivity (S/m)</b>	1.907910
<b>Variation (%)</b>	-0.880000

### SURFACE SAR

### VOLUME SAR

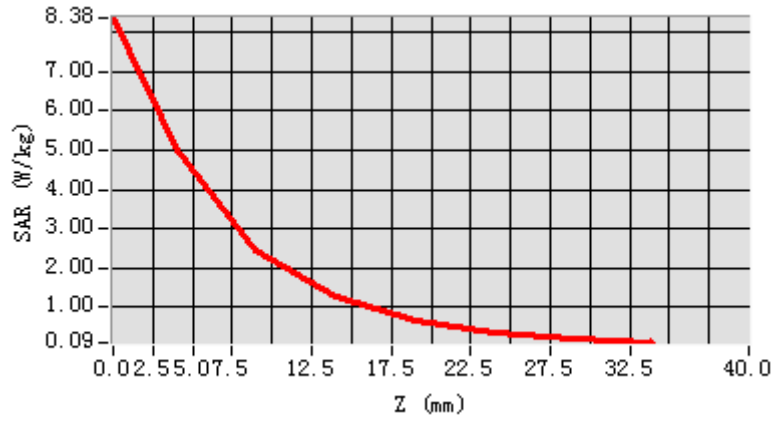


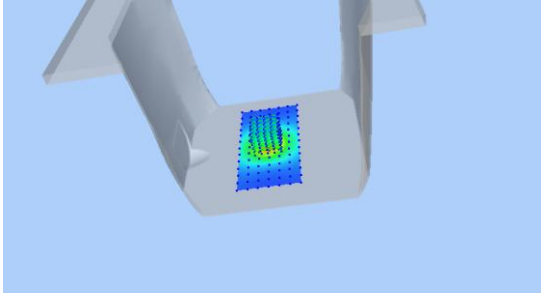
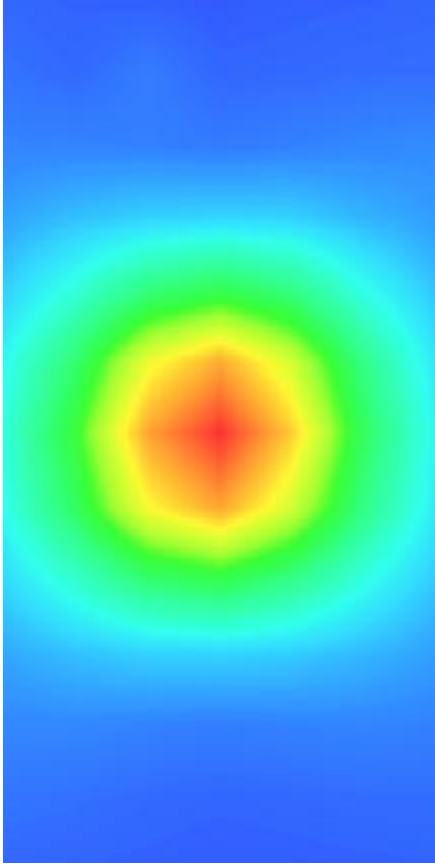
**Maximum location: X=-5.00, Y=0.00**

**SAR Peak: 8.28 W/kg**

<b>SAR 10g (W/Kg)</b>	2.328959
<b>SAR 1g (W/Kg)</b>	4.728068

<b>Z (mm)</b>	<b>0.00</b>	<b>4.00</b>	<b>9.00</b>	<b>14.00</b>	<b>19.00</b>	<b>24.00</b>	<b>29.00</b>
<b>SAR (W/Kg)</b>	<b>8.3759</b>	<b>4.9817</b>	<b>2.4673</b>	<b>1.2566</b>	<b>0.6401</b>	<b>0.3301</b>	<b>0.1714</b>



3D screen shot	Hot spot position
	

## MEASUREMENT 8

### HEAD

Type: Validation measurement (Complete)

Date of measurement: 23/7/2018

Measurement duration: 9 minutes 57 seconds

#### A. Experimental conditions.

<b><u>Area Scan</u></b>	<u>dx=8mm dy=8mm</u>
<b><u>ZoomScan</u></b>	<u>5x5x7,dx=8mm dy=8mm dz=5mm,Complete</u>
<b><u>Phantom</u></b>	<u>Validation plane</u>
<b><u>Device Position</u></b>	<u>Dipole</u>
<b><u>Band</u></b>	<u>CW2450</u>
<b><u>Channels</u></b>	<u>Middle</u>
<b><u>Signal</u></b>	<u>CW (Crest factor: 1.0)</u>

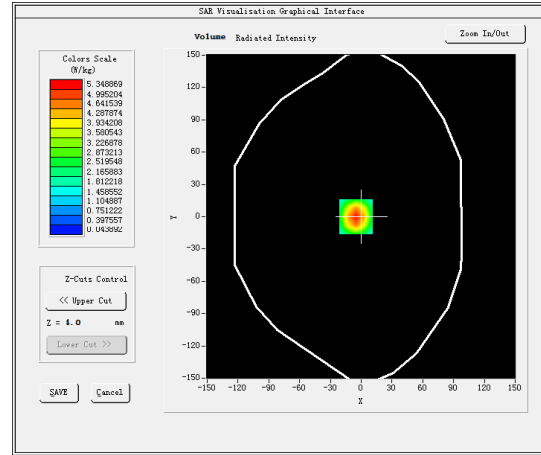
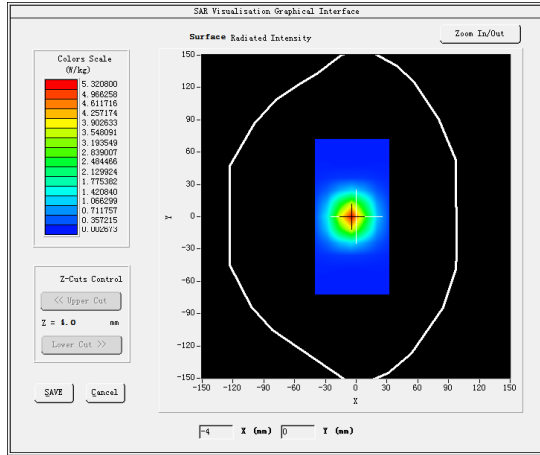
#### B. SAR Measurement Results

Middle Band SAR (Channel -1):

<b>Frequency (MHz)</b>	2450.000000
<b>Relative permittivity (real part)</b>	39.270901
<b>Relative permittivity (imaginary part)</b>	13.557900
<b>Conductivity (S/m)</b>	1.845381
<b>Variation (%)</b>	-0.750000

### SURFACE SAR

### VOLUME SAR



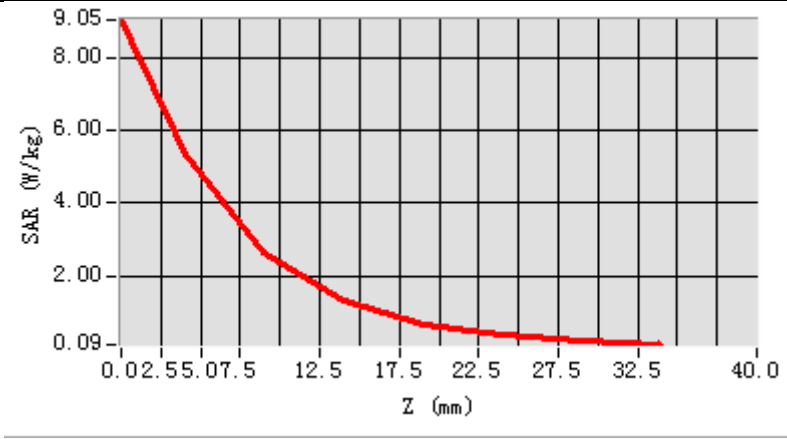
**Maximum location: X=-5.00, Y=0.00**

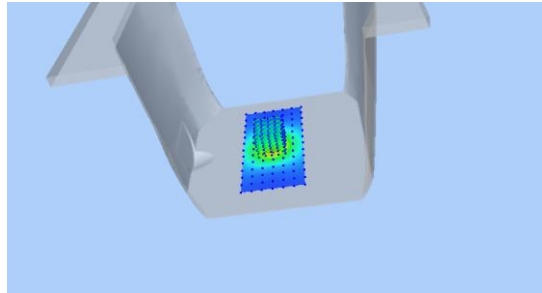
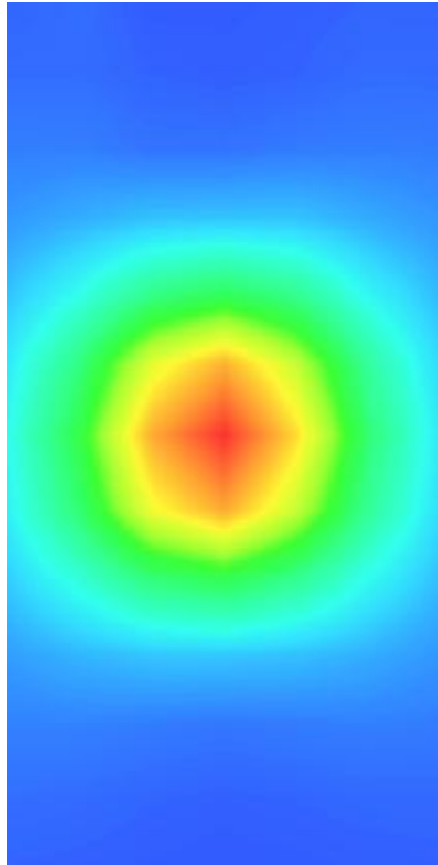
**SAR Peak: 8.94 W/kg**

<b>SAR 10g (W/Kg)</b>	2.480377
<b>SAR 1g (W/Kg)</b>	5.123599



Z (mm)	0.00	4.00	9.00	14.00	19.00	24.00	29.00
SAR (W/Kg)	9.0545	5.3489	2.6192	1.3223	0.6676	0.3420	0.1765



3D screen shot	Hot spot position
	

## MEASUREMENT 9

### BODY

Type: Validation measurement (Complete)

Date of measurement: 21/7/2018

Measurement duration: 10 minutes 46 seconds

### A. Experimental conditions.

<b><u>Area Scan</u></b>	<u>dx=8mm dy=8mm</u>
<b><u>ZoomScan</u></b>	<u>5x5x7,dx=8mm dy=8mm dz=5mm,Complete</u>
<b><u>Phantom</u></b>	<u>Validation plane</u>
<b><u>Device Position</u></b>	<u>Dipole</u>
<b><u>Band</u></b>	<u>CW2600</u>
<b><u>Channels</u></b>	<u>Middle</u>
<b><u>Signal</u></b>	<u>CW (Crest factor: 1.0)</u>

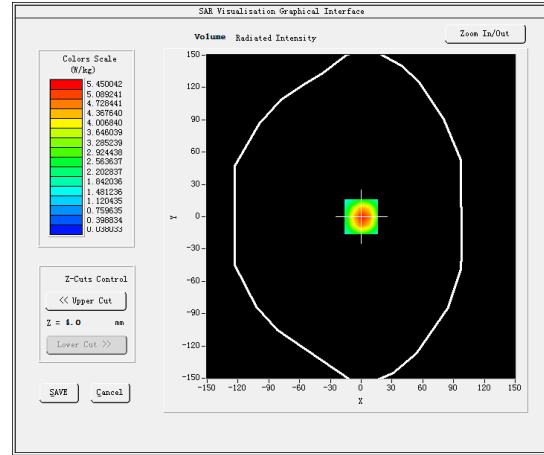
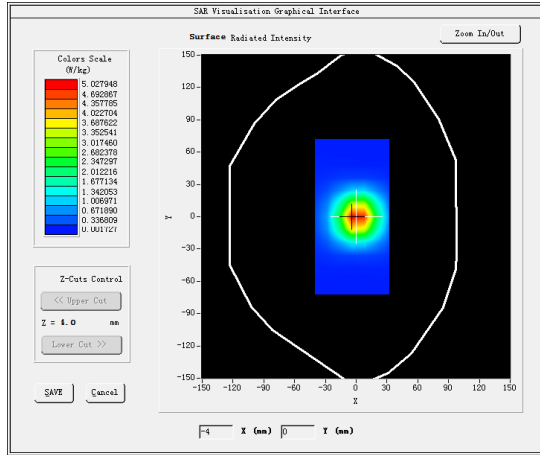
### B. SAR Measurement Results

Middle Band SAR (Channel -1):

<b>Frequency (MHz)</b>	2600.000000
<b>Relative permittivity (real part)</b>	52.007900
<b>Relative permittivity (imaginary part)</b>	14.458500
<b>Conductivity (S/m)</b>	2.088450
<b>Variation (%)</b>	-0.840000

### SURFACE SAR

### VOLUME SAR

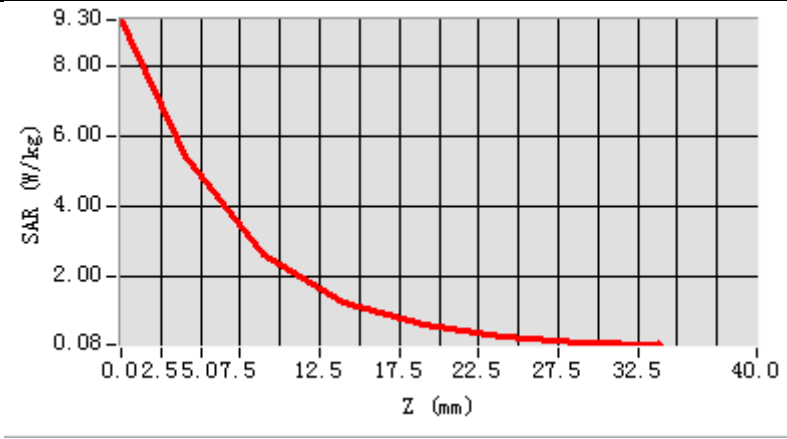


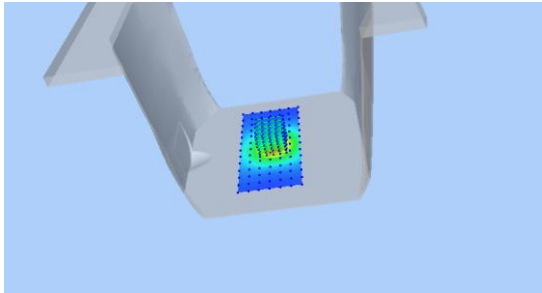
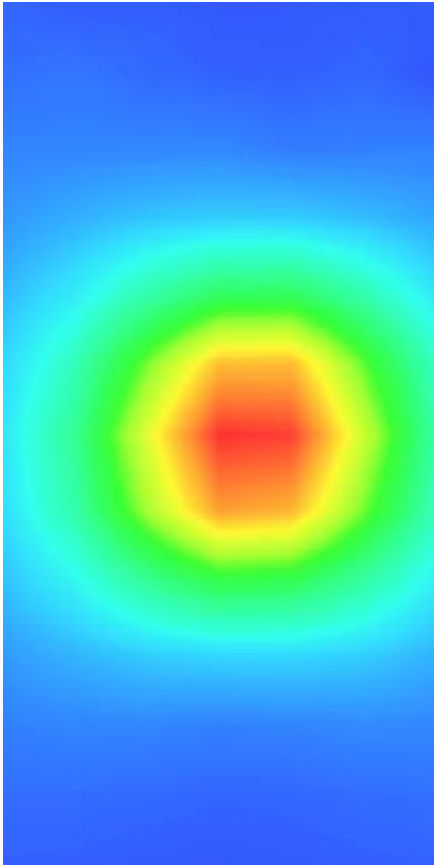
**Maximum location: X=0.00, Y=0.00**

**SAR Peak: 9.29 W/kg**

<b>SAR 10g (W/Kg)</b>	2.508458
<b>SAR 1g (W/Kg)</b>	5.207463

<b>Z (mm)</b>	<b>0.00</b>	<b>4.00</b>	<b>9.00</b>	<b>14.00</b>	<b>19.00</b>	<b>24.00</b>	<b>29.00</b>
<b>SAR (W/Kg)</b>	<b>9.2995</b>	<b>5.4500</b>	<b>2.6277</b>	<b>1.2985</b>	<b>0.6401</b>	<b>0.3201</b>	<b>0.1605</b>



3D screen shot	Hot spot position
	

## MEASUREMENT 10

### HEAD

Type: Validation measurement (Complete)

Date of measurement: 21/7/2018

Measurement duration: 10 minutes 38 seconds

#### **A. Experimental conditions.**

<b><u>Area Scan</u></b>	<u>dx=8mm dy=8mm</u>
<b><u>ZoomScan</u></b>	<u>5x5x7, dx=8mm dy=8mm dz=5mm, Complete</u>
<b><u>Phantom</u></b>	<u>Validation plane</u>
<b><u>Device Position</u></b>	<u>Dipole</u>
<b><u>Band</u></b>	<u>CW2600</u>
<b><u>Channels</u></b>	<u>Middle</u>
<b><u>Signal</u></b>	<u>CW (Crest factor: 1.0)</u>

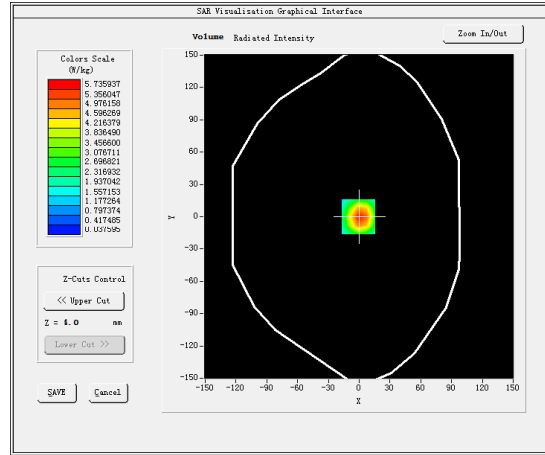
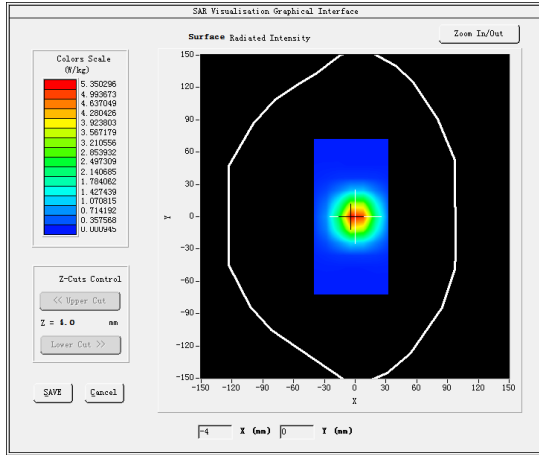
#### **B. SAR Measurement Results**

Middle Band SAR (Channel -1):

<b>Frequency (MHz)</b>	2600.000000
<b>Relative permittivity (real part)</b>	39.253799
<b>Relative permittivity (imaginary part)</b>	13.315900
<b>Conductivity (S/m)</b>	1.923408
<b>Variation (%)</b>	-0.500000

### SURFACE SAR

### VOLUME SAR

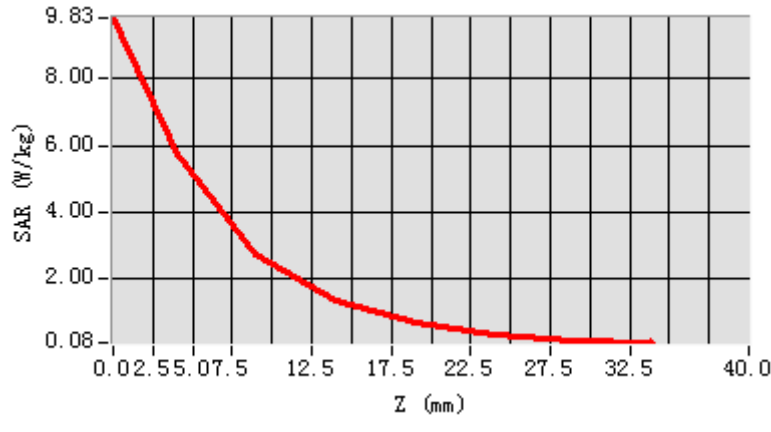


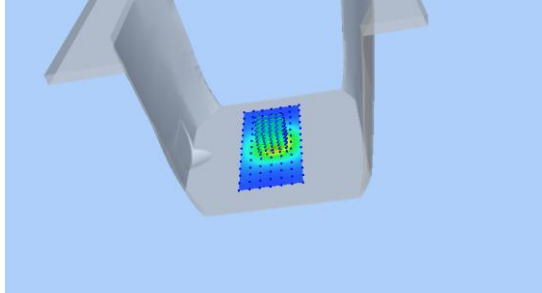
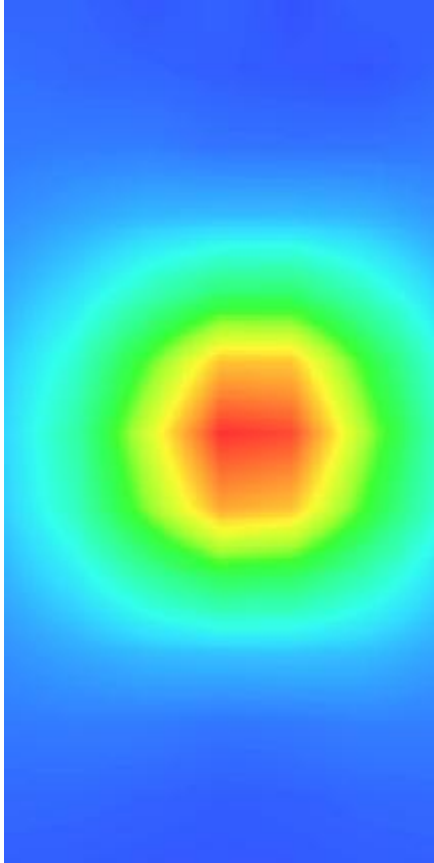
**Maximum location: X=-1.00, Y=0.00**

**SAR Peak: 9.92 W/kg**

<b>SAR 10g (W/Kg)</b>	2.606083
<b>SAR 1g (W/Kg)</b>	5.501046

<b>Z (mm)</b>	<b>0.00</b>	<b>4.00</b>	<b>9.00</b>	<b>14.00</b>	<b>19.00</b>	<b>24.00</b>	<b>29.00</b>
<b>SAR (W/Kg)</b>	<b>9.8294</b>	<b>5.7359</b>	<b>2.7428</b>	<b>1.3436</b>	<b>0.6547</b>	<b>0.3251</b>	<b>0.1620</b>



3D screen shot	Hot spot position
	

## MEASUREMENT 11

### HEAD

Type: Validation measurement (Complete)

Date of measurement: 23/7/2018

Measurement duration: 28 minutes 56 seconds

#### **A. Experimental conditions.**

<b><u>Area Scan</u></b>	<u>dx=10mm dy=10mm</u>
<b><u>ZoomScan</u></b>	<u>8x8x7,dx=4mm dy=4mm dz=2mm,Complete</u>
<b><u>Phantom</u></b>	<u>Validation plane</u>
<b><u>Device Position</u></b>	<u>Dipole</u>
<b><u>Band</u></b>	<u>CW5200</u>
<b><u>Channels</u></b>	<u>Middle</u>
<b><u>Signal</u></b>	<u>CW (Duty cycle:1:1)</u>

#### **B. SAR Measurement Results**

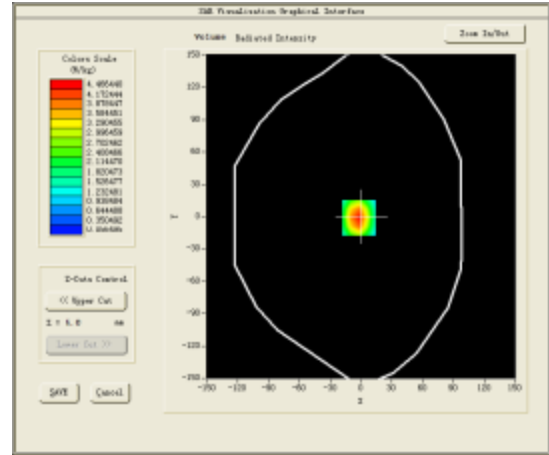
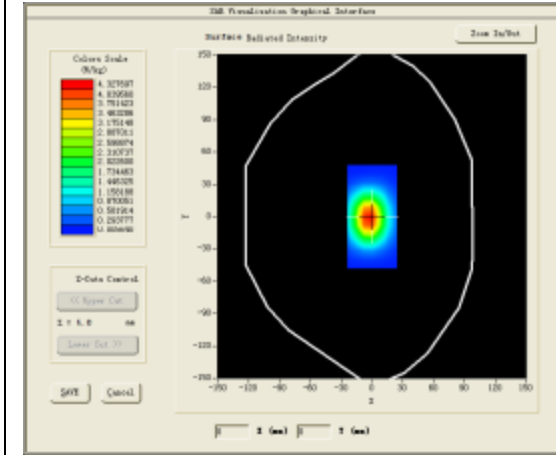
Middle Band SAR (Channel -1):

<b>Frequency (MHz)</b>	5200.000000
<b>Relative permittivity (real part)</b>	35.553182
<b>Relative permittivity (imaginary part)</b>	16.497414
<b>Conductivity (S/m)</b>	4.773841
<b>Variation (%)</b>	-0.070000



### SURFACE SAR

### VOLUME SAR

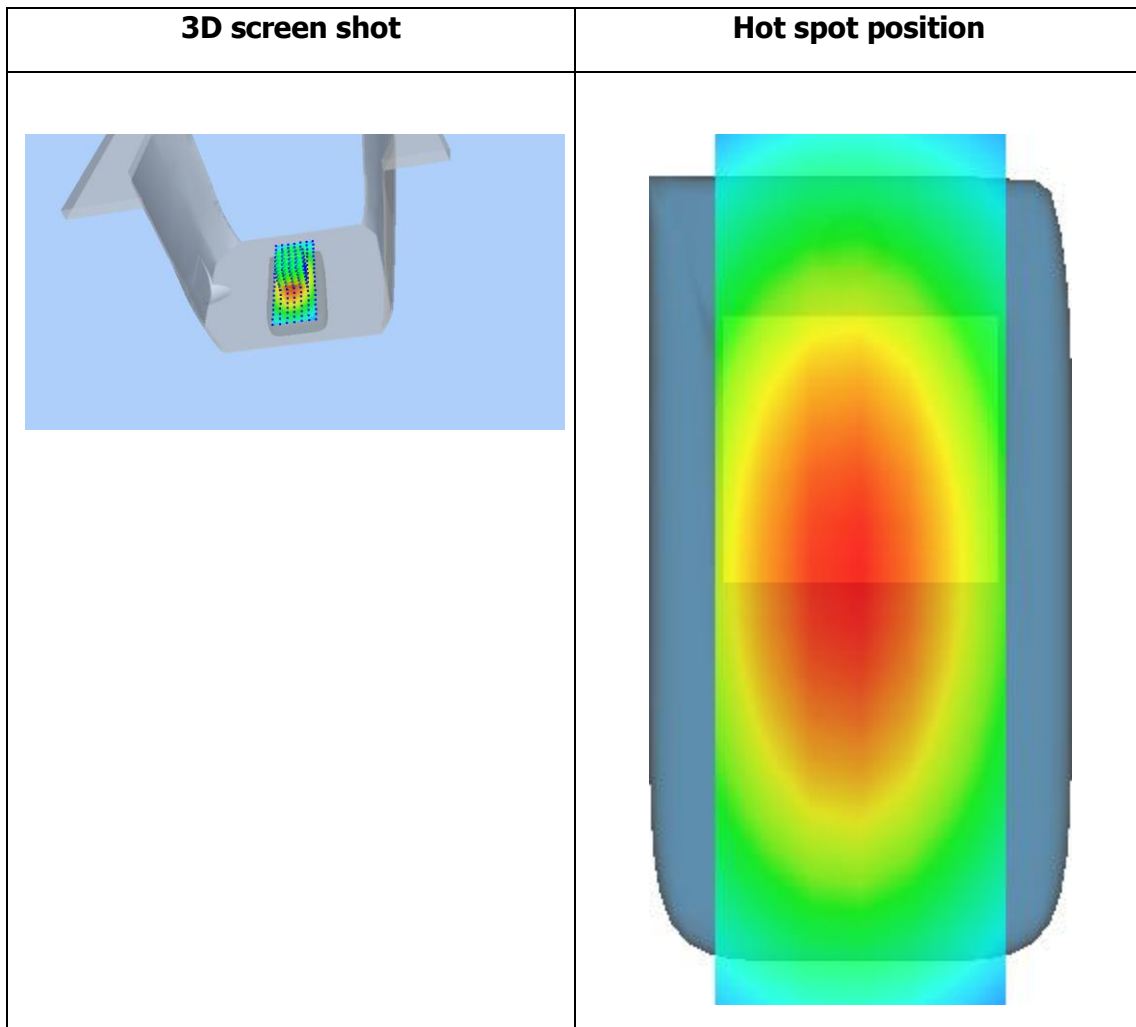
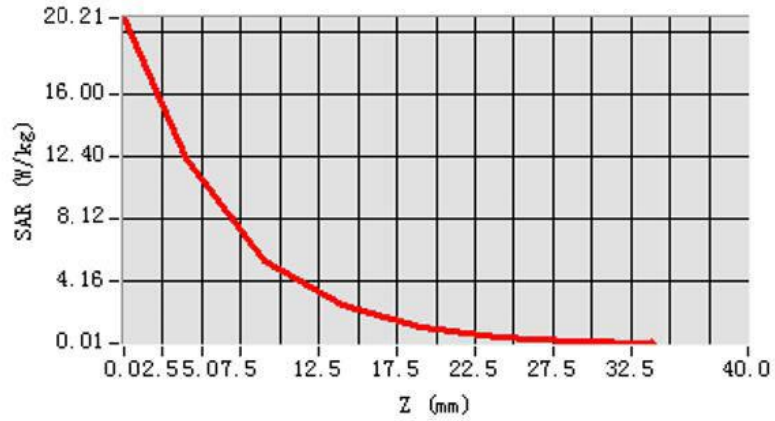


**Maximum location: X=-2.00, Y=-1.00**

**SAR Peak: 20.21W/kg**

<b>SAR 10g (W/Kg)</b>	5.556004
<b>SAR 1g (W/Kg)</b>	17.465049

Z (mm)	0.00	4.00	9.00	14.00	19.00	24.00	29.00
SAR (W/Kg)	20.2069	16.0125	12.4029	10.4412	8.2993	4.2017	2.1343



## MEASUREMENT 12

### BODY

Type: Validation measurement (Complete)

Date of measurement: 23/7/2018

Measurement duration: 28 minutes 52 seconds

### **A. Experimental conditions.**

<b><u>Area Scan</u></b>	<u>dx=10mm dy=10mm</u>
<b><u>ZoomScan</u></b>	<u>8x8x7,dx=4mm dy=4mm dz=2mm,Complete</u>
<b><u>Phantom</u></b>	<u>Validation plane</u>
<b><u>Device Position</u></b>	<u>Dipole</u>
<b><u>Band</u></b>	<u>CW5200</u>
<b><u>Channels</u></b>	<u>Middle</u>
<b><u>Signal</u></b>	<u>CW (Duty cycle:1:1)</u>

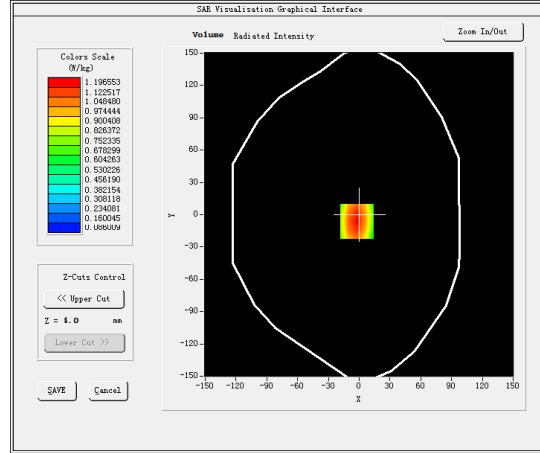
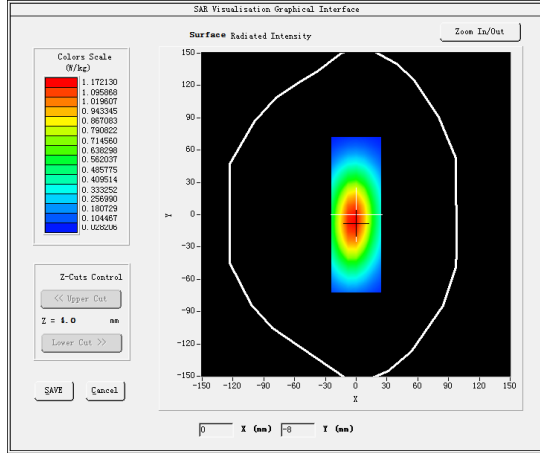
### **B. SAR Measurement Results**

Middle Band SAR (Channel -1):

<b>Frequency (MHz)</b>	5200.000000
<b>Relative permittivity (real part)</b>	50.422599
<b>Relative permittivity (imaginary part)</b>	18.202492
<b>Conductivity (S/m)</b>	5.26371
<b>Variation (%)</b>	0.270000

### SURFACE SAR

### VOLUME SAR

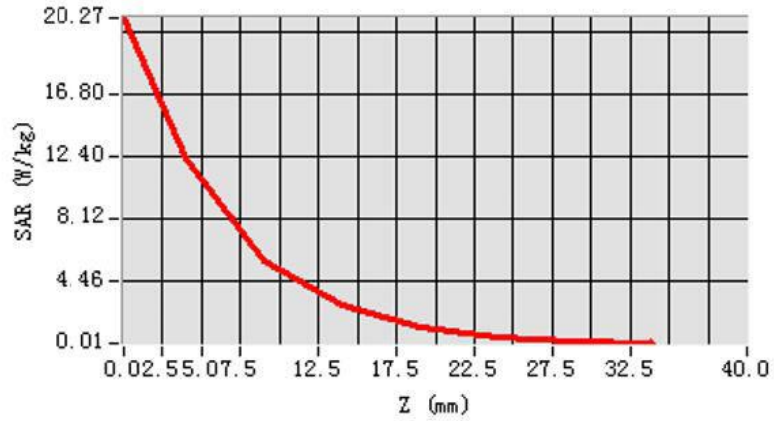


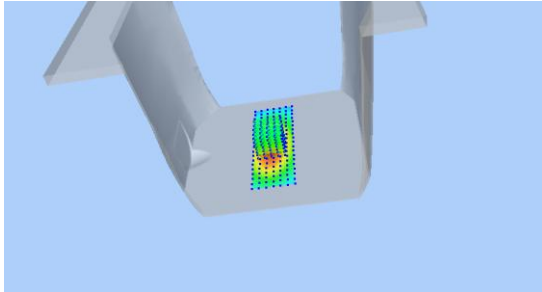
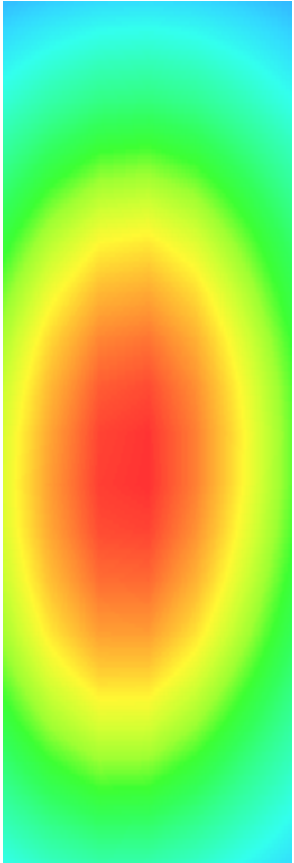
**Maximum location: X=-2.00, Y=-6.00**

**SAR Peak: 20.27 W/kg**

<b>SAR 10g (W/Kg)</b>	5.964061
<b>SAR 1g (W/Kg)</b>	16.7183141

Z (mm)	0.00	4.00	9.00	14.00	19.00	24.00	29.00
SAR (W/Kg)	20.2711	16.1966	12.7784	10.5196	8.1218	4.2403	1.1660



3D screen shot	Hot spot position
	

## MEASUREMENT 13

### HEAD

Type: Validation measurement (Complete)

Date of measurement: 23/7/2018

Measurement duration: 29 minutes 30 seconds

### **A. Experimental conditions.**

<b><u>Area Scan</u></b>	<u>dx=10mm dy=10mm</u>
<b><u>ZoomScan</u></b>	<u>8x8x7,dx=4mm dy=4mm dz=2mm,Complete</u>
<b><u>Phantom</u></b>	<u>Validation plane</u>
<b><u>Device Position</u></b>	<u>Dipole</u>
<b><u>Band</u></b>	<u>CW5300</u>
<b><u>Channels</u></b>	<u>Middle</u>
<b><u>Signal</u></b>	<u>CW (Duty cycle:1:1)</u>

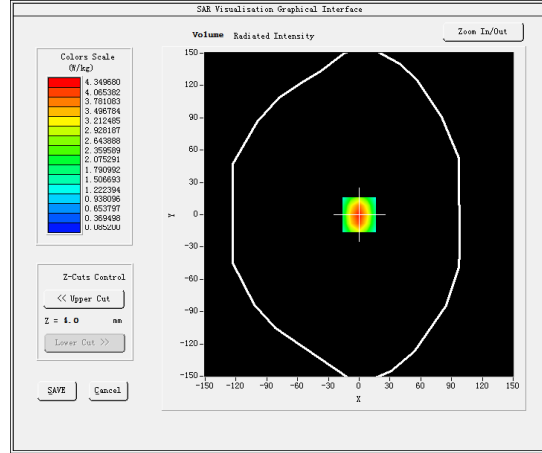
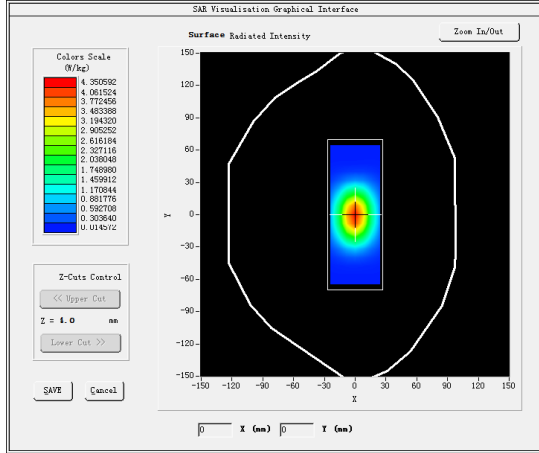
### **B. SAR Measurement Results**

Middle Band SAR (Channel -1):

<b>Frequency (MHz)</b>	5300.000000
<b>Relative permittivity (real part)</b>	35.343199
<b>Relative permittivity (imaginary part)</b>	16.591080
<b>Conductivity (S/m)</b>	4.881334
<b>Variation (%)</b>	-0.620000

### SURFACE SAR

### VOLUME SAR

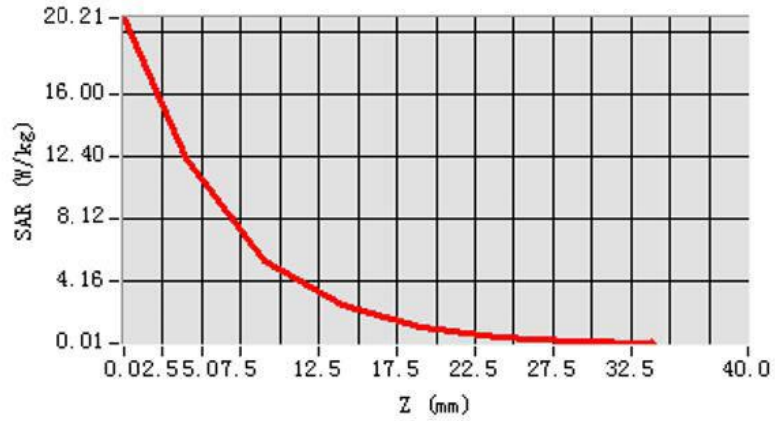


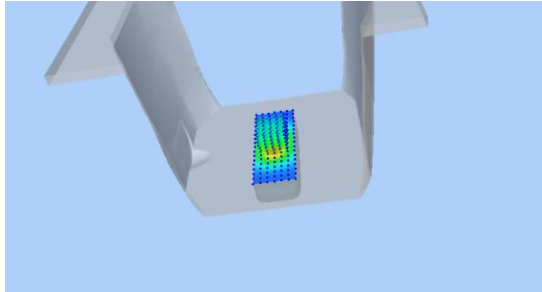
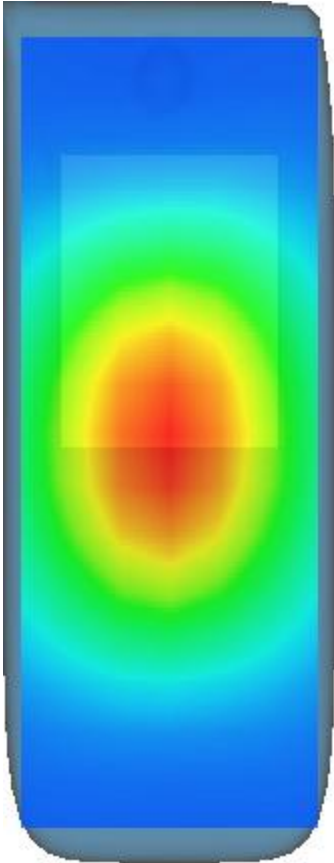
**Maximum location: X=0.00, Y=0.00**

**SAR Peak: 20.21 W/kg**

<b>SAR 10g (W/Kg)</b>	6.156204
<b>SAR 1g (W/Kg)</b>	17.795228

Z (mm)	0.00	4.00	9.00	14.00	19.00	24.00	29.00
SAR (W/Kg)	20.2135	16.3497	12.3796	10.3511	8.1818	4.2574	1.2733



3D screen shot	Hot spot position
	



## MEASUREMENT 14

### BODY

Type: Validation measurement (Complete)

Date of measurement: 23/7/2018

Measurement duration: 30 minutes 36 seconds

### **A. Experimental conditions.**

<b><u>Area Scan</u></b>	<u>dx=10mm dy=10mm</u>
<b><u>ZoomScan</u></b>	<u>8x8x7,dx=4mm dy=4mm dz=2mm,Complete</u>
<b><u>Phantom</u></b>	<u>Validation plane</u>
<b><u>Device Position</u></b>	<u>Dipole</u>
<b><u>Band</u></b>	<u>CW5300</u>
<b><u>Channels</u></b>	<u>Middle</u>
<b><u>Signal</u></b>	<u>CW (Duty cycle:1:1)</u>

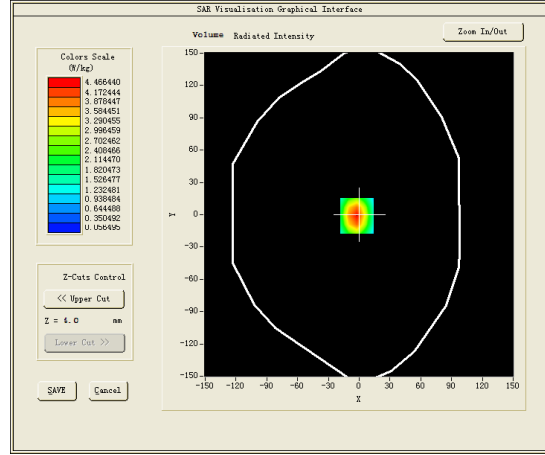
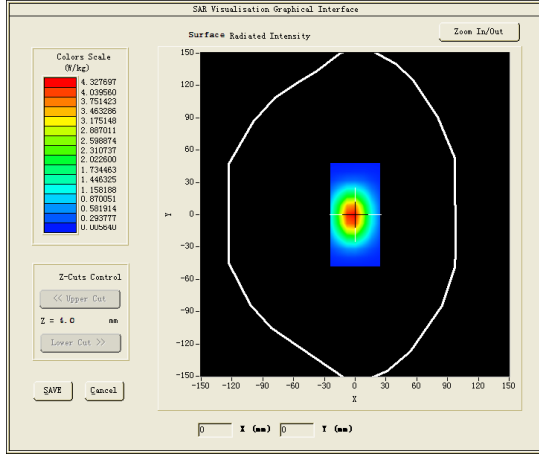
### **B. SAR Measurement Results**

Middle Band SAR (Channel -1):

<b>Frequency (MHz)</b>	5300.000000
<b>Relative permittivity (real part)</b>	47.944300
<b>Relative permittivity (imaginary part)</b>	18.167566
<b>Conductivity (S/m)</b>	5.353919
<b>Variation (%)</b>	-0.350000

### SURFACE SAR

### VOLUME SAR

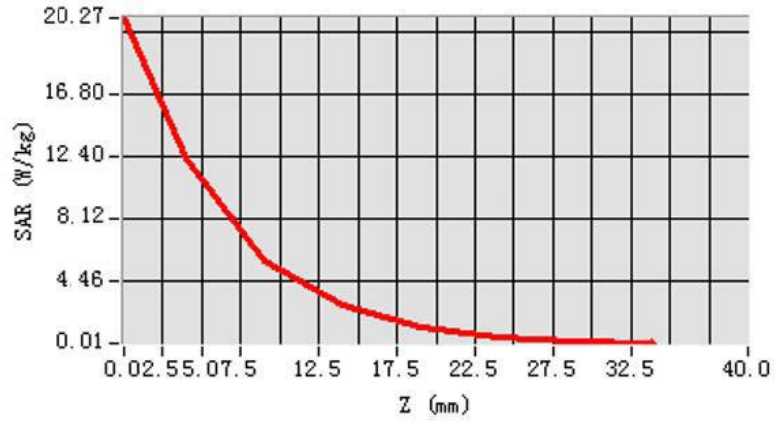


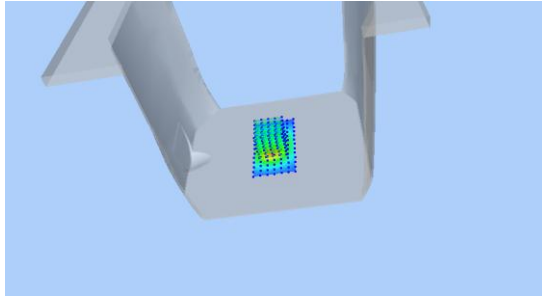
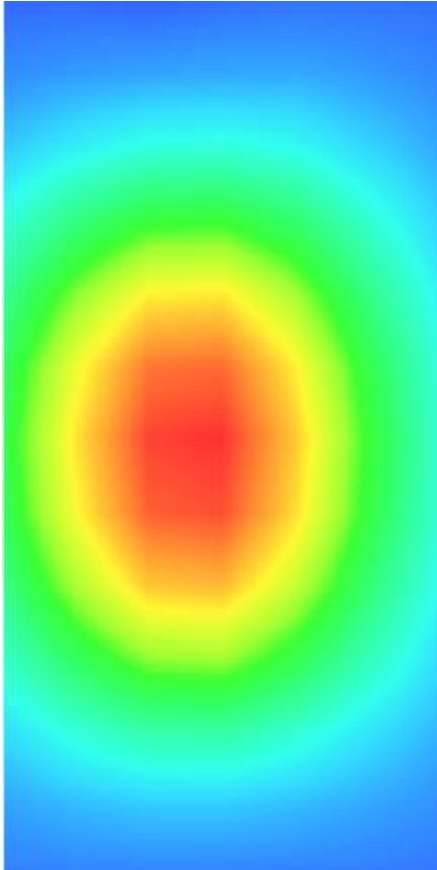
**Maximum location: X=-2.00, Y=-1.00**

**SAR Peak: 20.27 W/kg**

<b>SAR 10g (W/Kg)</b>	5.882155
<b>SAR 1g (W/Kg)</b>	16.537029

Z (mm)	0.00	4.00	9.00	14.00	19.00	24.00	29.00
SAR (W/Kg)	20.2697	16.4664	12.4603	10.3992	6.7963	4.4560	1.2601



3D screen shot	Hot spot position
	

## MEASUREMENT 15

### HEAD

Type: Validation measurement (Complete)

Date of measurement: 23/7/2018

Measurement duration: 29 minutes 59 seconds

### **A. Experimental conditions.**

<b><u>Area Scan</u></b>	<u>dx=10mm dy=10mm</u>
<b><u>ZoomScan</u></b>	<u>8x8x7,dx=4mm dy=4mm dz=2mm,Complete</u>
<b><u>Phantom</u></b>	<u>Validation plane</u>
<b><u>Device Position</u></b>	<u>Dipole</u>
<b><u>Band</u></b>	<u>CW5800</u>
<b><u>Channels</u></b>	<u>Middle</u>
<b><u>Signal</u></b>	<u>CW (Duty cycle:1:1)</u>

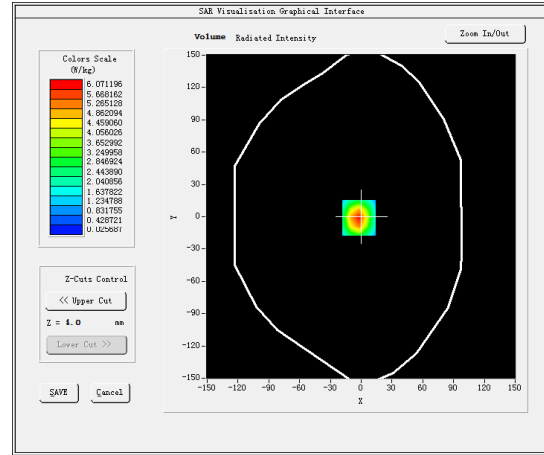
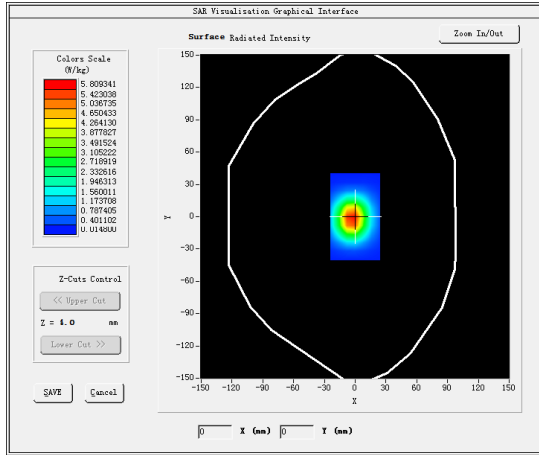
### **B. SAR Measurement Results**

Middle Band SAR (Channel -1):

<b>Frequency (MHz)</b>	5800.000000
<b>Relative permittivity (real part)</b>	34.225599
<b>Relative permittivity (imaginary part)</b>	16.160852
<b>Conductivity (S/m)</b>	5.211844
<b>Variation (%)</b>	0.050000

### SURFACE SAR

### VOLUME SAR

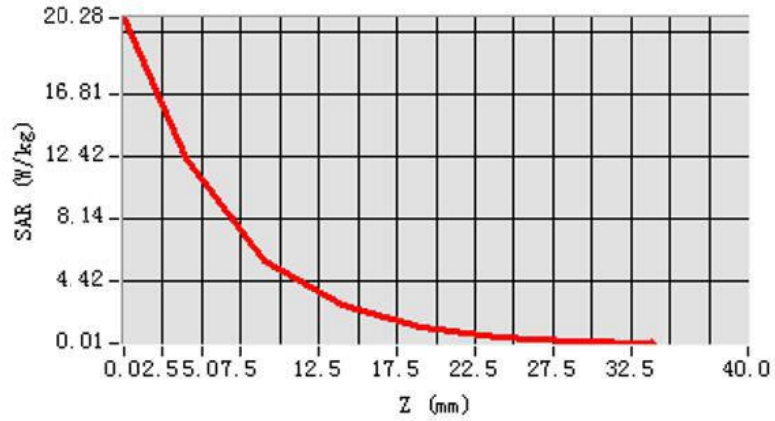


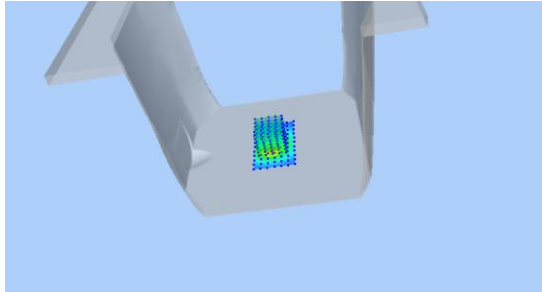
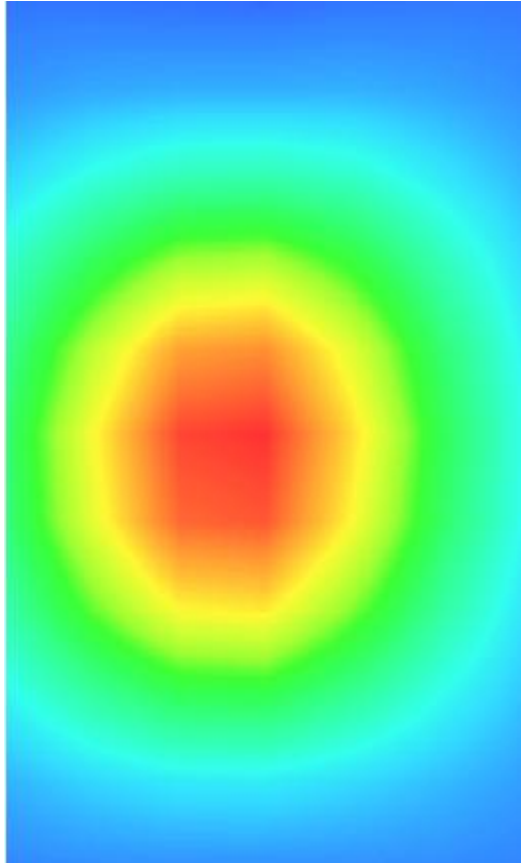
**Maximum location: X=-2.00, Y=-1.00**

**SAR Peak: 20.28 W/kg**

<b>SAR 10g (W/Kg)</b>	6.334073
<b>SAR 1g (W/Kg)</b>	18.519278

Z (mm)	0.00	4.00	9.00	14.00	19.00	24.00	29.00
SAR (W/Kg)	20.2755	16.2712	12.8292	9.3565	6.6515	4.3180	1.1553



3D screen shot	Hot spot position
	

## MEASUREMENT 16

### BODY

Type: Validation measurement (Complete)

Date of measurement: 23/7/2018

Measurement duration: 30 minutes 36 seconds

#### A. Experimental conditions.

<b><u>Area Scan</u></b>	<u>dx=10mm dy=10mm</u>
<b><u>ZoomScan</u></b>	<u>8x8x7,dx=4mm dy=4mm dz=2mm,Complete</u>
<b><u>Phantom</u></b>	<u>Validation plane</u>
<b><u>Device Position</u></b>	<u>Dipole</u>
<b><u>Band</u></b>	<u>CW5800</u>
<b><u>Channels</u></b>	<u>Middle</u>
<b><u>Signal</u></b>	<u>CW (Duty cycle:1:1)</u>

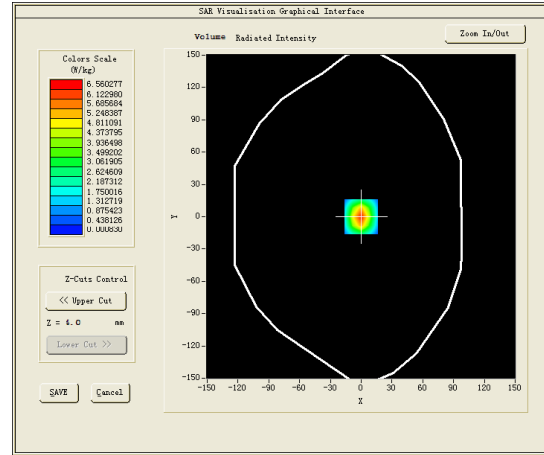
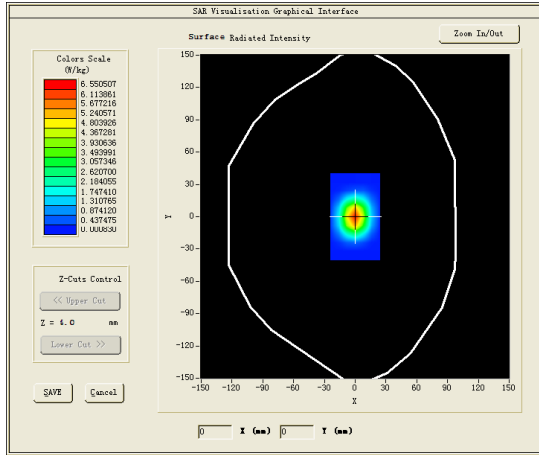
#### B. SAR Measurement Results

Middle Band SAR (Channel -1):

<b>Frequency (MHz)</b>	5800.000000
<b>Relative permittivity (real part)</b>	48.090699
<b>Relative permittivity (imaginary part)</b>	19.043921
<b>Conductivity (S/m)</b>	6.14163
<b>Variation (%)</b>	0.010000

### SURFACE SAR

### VOLUME SAR



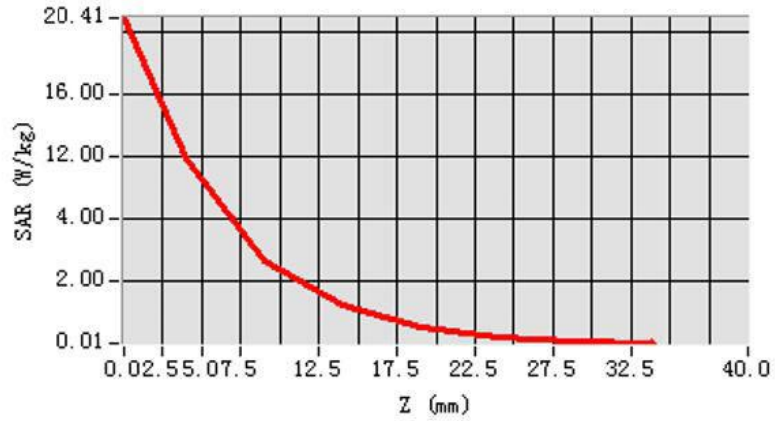
**Maximum location: X=0.00, Y=0.00**

**SAR Peak: 20.41 W/kg**

<b>SAR 10g (W/Kg)</b>	6.080196
<b>SAR 1g (W/Kg)</b>	17.965831



Z (mm)	0.00	4.00	9.00	14.00	19.00	24.00	29.00
SAR (W/Kg)	20.4140	16.5603	12.8797	8.2004	4.4226	2.1066	1.0008



3D screen shot	Hot spot position
