



Annex B: Measurement Results

Project Name : X601-LTE

**Report Number:
FCC16083894A-6**

MEASUREMENT 1

Type: Phone measurement (Complete)

Date of measurement: 19/8/2016

Measurement duration: 9 minutes 18 seconds

A. Experimental conditions.

<u>Area Scan</u>	<u>dx=15mm dy=15mm</u>
<u>ZoomScan</u>	<u>5x5x7,dx=8mm dy=8mm dz=5mm,Complete</u>
<u>Phantom</u>	<u>Right head</u>
<u>Device Position</u>	<u>Cheek</u>
<u>Band</u>	<u>CUSTOM (GPRS850 4TX)</u>
<u>Channels</u>	<u>Middle</u>
<u>Signal</u>	<u>Duty Cycle: 1:2</u>
<u>Conversion factor</u>	<u>4.93</u>

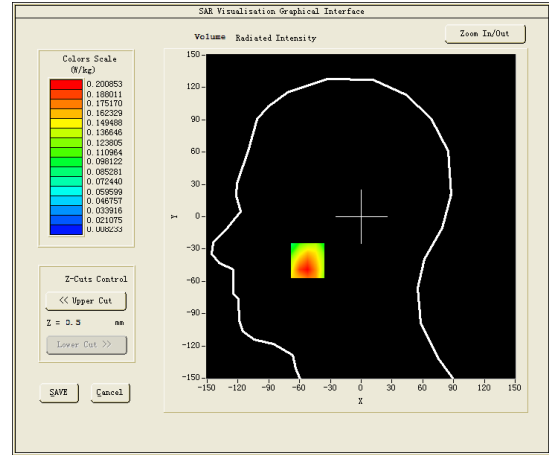
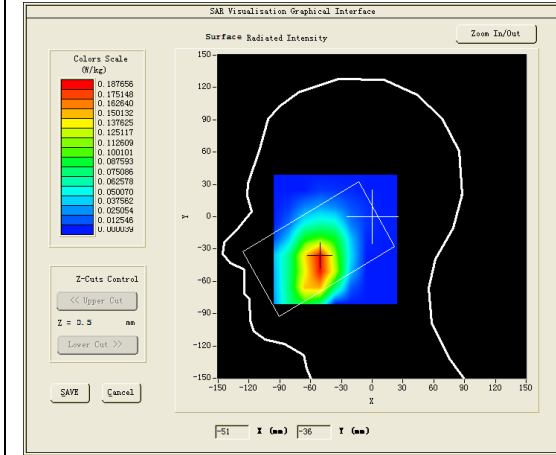
B. SAR Measurement Results

Middle Band SAR (Channel 190):

Frequency (MHz)	836.599976
Relative permittivity (real part)	40.527519
Relative permittivity (imaginary part)	19.956440
Conductivity (S/m)	0.927531
Variation (%)	1.080000

SURFACE SAR

VOLUME SAR

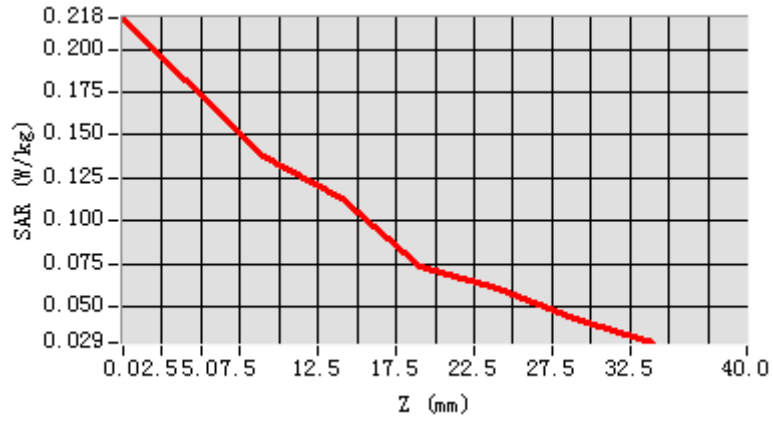


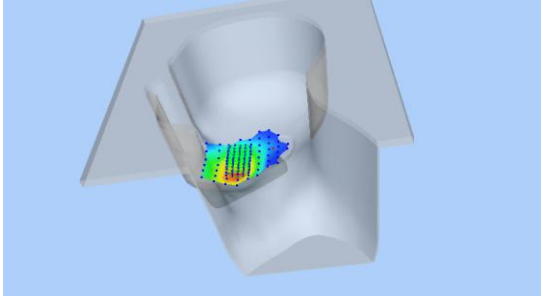
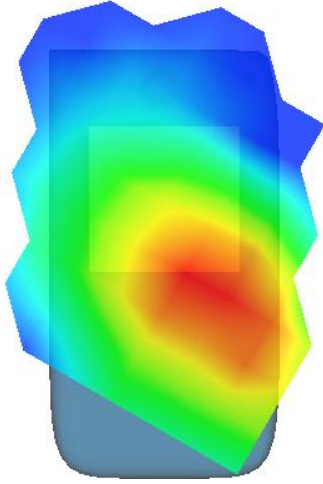
Maximum location: X=-52.00, Y=-41.00

SAR Peak: 0.28 W/kg

SAR 10g (W/Kg)	0.128429
SAR 1g (W/Kg)	0.296319

Z (mm)	0.00	4.00	9.00	14.00	19.00	24.00	29.00
SAR (W/Kg)	0.2182	0.1820	0.1372	0.1130	0.0739	0.0605	0.0424



3D screen shot	Hot spot position
	

MEASUREMENT 2

Towards-ground-middle

Type: Phone measurement (Complete)

Date of measurement: 19/8/2016

Measurement duration: 10 minutes 46 seconds

A. Experimental conditions.

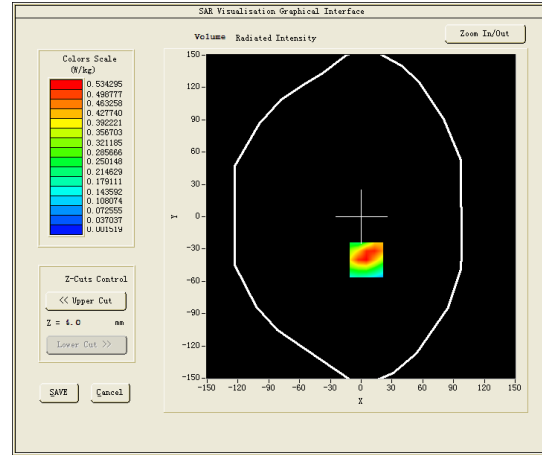
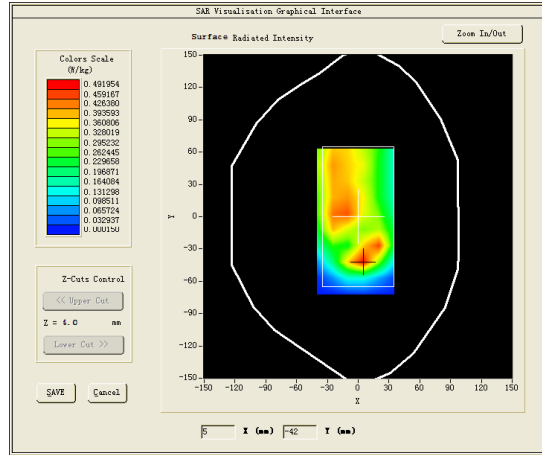
<u>Area Scan</u>	<u>dx=15mm dy=15mm</u>
<u>ZoomScan</u>	<u>5x5x7,dx=8mm dy=8mm</u> <u>dz=5mm,Complete</u>
<u>Phantom</u>	<u>Validation plane</u>
<u>Device Position</u>	<u>Body</u>
<u>Band</u>	<u>CUSTOM (GPRS850 4Tx)</u>
<u>Channels</u>	<u>Middle</u>
<u>Signal</u>	<u>Duty Cycle: 2.00 (Crest factor: 2.0)</u>
<u>Conversion factor</u>	<u>5.07</u>

B. SAR Measurement Results

Frequency (MHz)	836.599976
Relative permittivity (real part)	53.395020
Relative permittivity (imaginary part)	21.690760
Conductivity (S/m)	1.008138
Variation (%)	0.580000

SURFACE SAR

VOLUME SAR

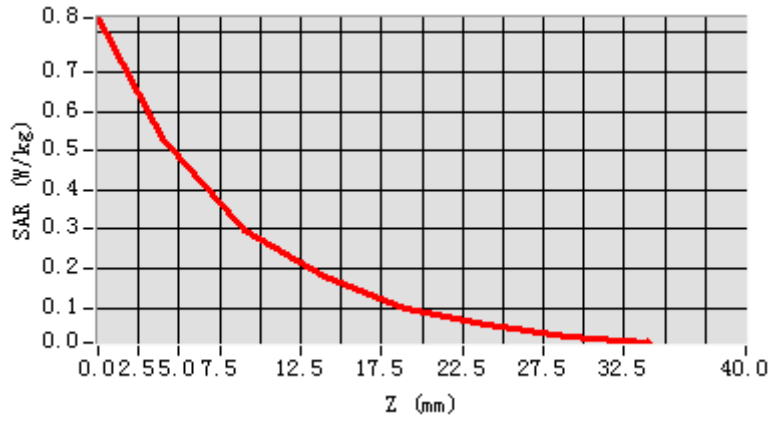


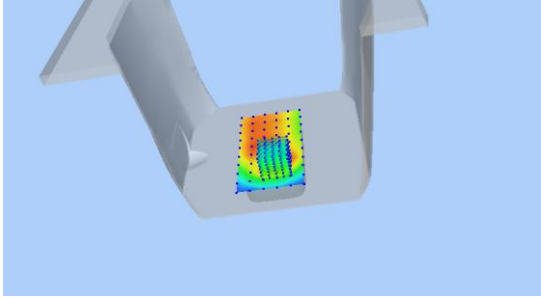
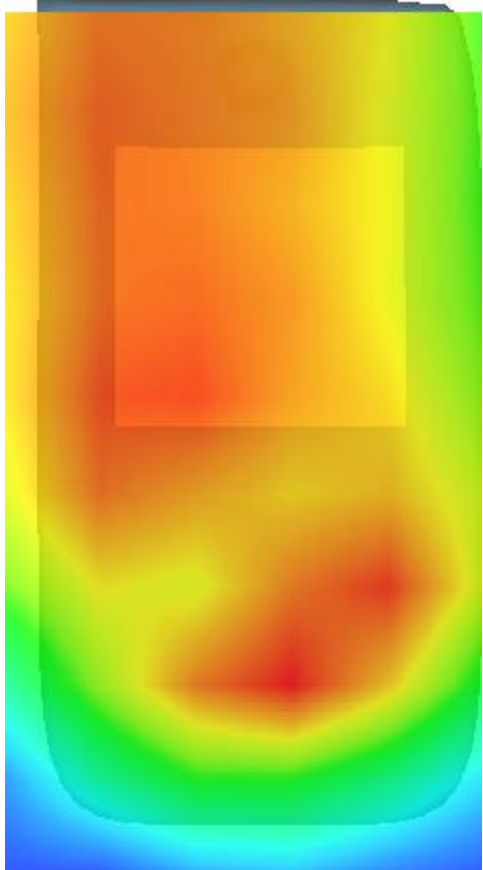
Maximum location: X=5.00, Y=-40.00

SAR Peak: 0.89 W/kg

SAR 10g (W/Kg)	0.282900
SAR 1g (W/Kg)	0.539898

Z (mm)	0.00	4.00	9.00	14.00	19.00	24.00	29.00
SAR (W/Kg)	0.8377	0.5343	0.2978	0.1783	0.1006	0.0561	0.0289



3D screen shot	Hot spot position
	

MEASUREMENT 3

Rear Side-middle

Type: Phone measurement (Complete)

Date of measurement: 19/8/2016

Measurement duration: 10 minutes 57 seconds

A. Experimental conditions.

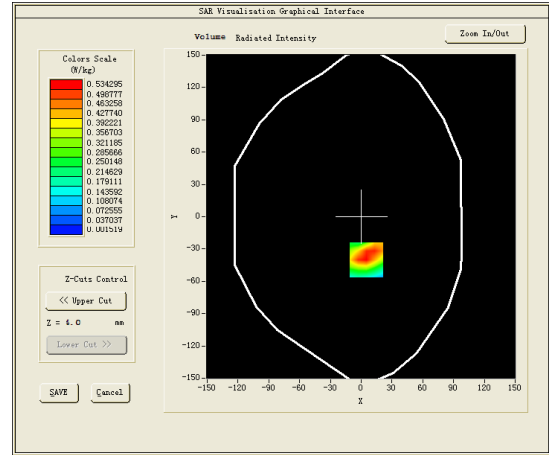
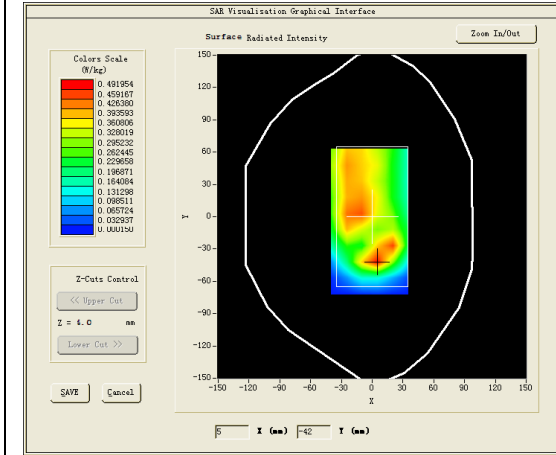
<u>Area Scan</u>	<u>dx=15mm dy=15mm</u>
<u>ZoomScan</u>	<u>5x5x7,dx=8mm dy=8mm dz=5mm,Complete</u>
<u>Phantom</u>	<u>Validation plane</u>
<u>Device Position</u>	<u>Body</u>
<u>Band</u>	<u>CUSTOM (GPRS850 4Tx)</u>
<u>Channels</u>	<u>Middle</u>
<u>Signal</u>	<u>Duty Cycle: 2.00 (Crest factor: 2.0)</u>
<u>Conversion factor</u>	<u>5.07</u>

B. SAR Measurement Results

Frequency (MHz)	836.599976
Relative permittivity (real part)	53.395020
Relative permittivity (imaginary part)	21.690760
Conductivity (S/m)	1.008138
Variation (%)	0.460000

SURFACE SAR

VOLUME SAR

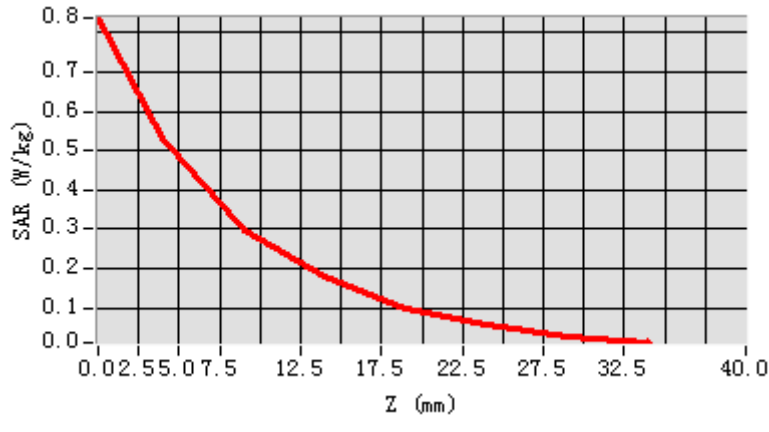


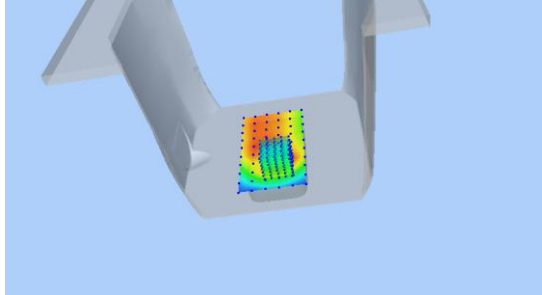
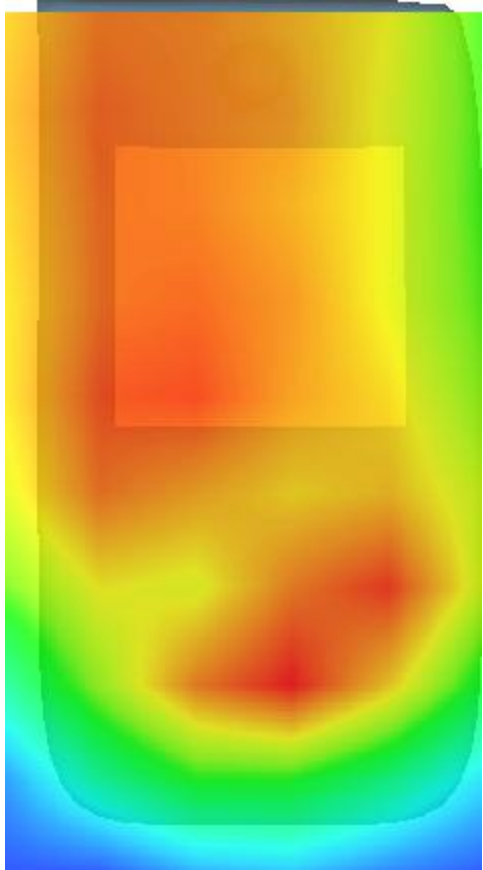
Maximum location: X=5.00, Y=-40.00

SAR Peak: 0.89 W/kg

SAR 10g (W/Kg)	0.272100
SAR 1g (W/Kg)	0.456898

Z (mm)	0.00	4.00	9.00	14.00	19.00	24.00	29.00
SAR (W/Kg)	0.8377	0.5343	0.2978	0.1783	0.1006	0.0561	0.0289



3D screen shot	Hot spot position
	

MEASUREMENT 4

Type: Phone measurement (Complete)

Date of measurement: 24/8/2016

Measurement duration: 11 minutes 38 seconds

A. Experimental conditions.

<u>Area Scan</u>	<u>dx=15mm dy=15mm</u>
<u>ZoomScan</u>	<u>5x5x7,dx=8mm dy=8mm dz=5mm,Complete</u>
<u>Phantom</u>	<u>Left head</u>
<u>Device Position</u>	<u>Cheek</u>
<u>Band</u>	<u>CUSTOM (GPRS1900 4TX)</u>
<u>Channels</u>	<u>Middle</u>
<u>Signal</u>	<u>Duty Cycle: 1:2</u>
<u>Conversion factor</u>	<u>4.63</u>

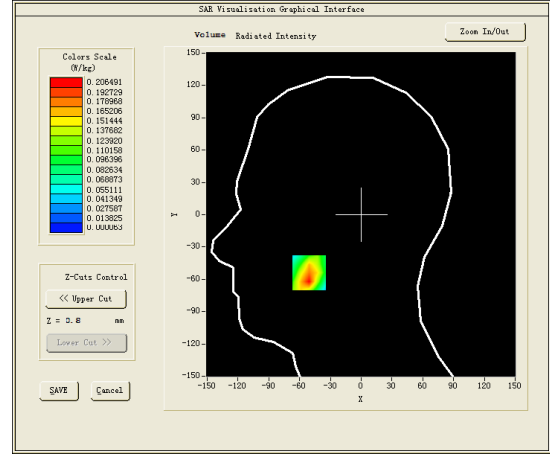
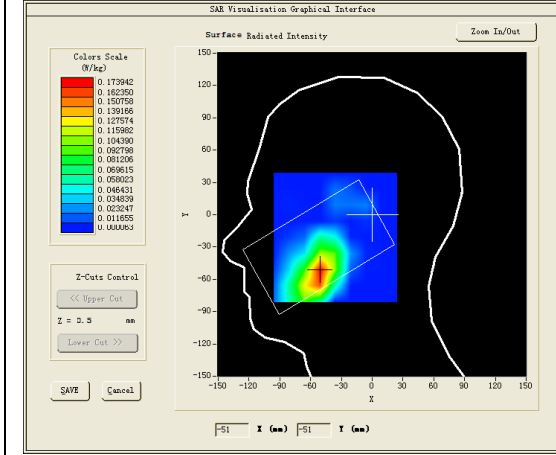
B. SAR Measurement Results

Middle Band SAR (Channel 661):

Frequency (MHz)	1880.000000
Relative permittivity (real part)	40.054401
Relative permittivity (imaginary part)	13.497900
Conductivity (S/m)	1.409781
Variation (%)	-3.530000

SURFACE SAR

VOLUME SAR

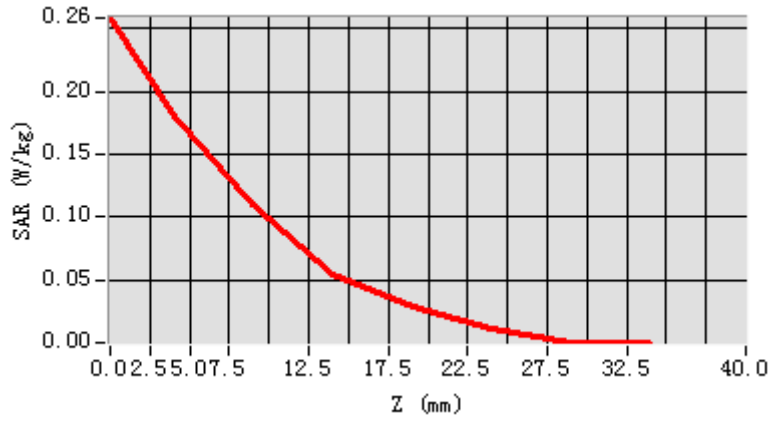


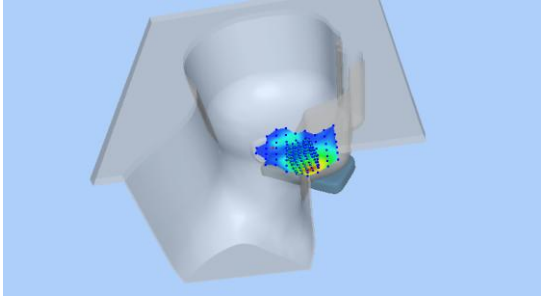
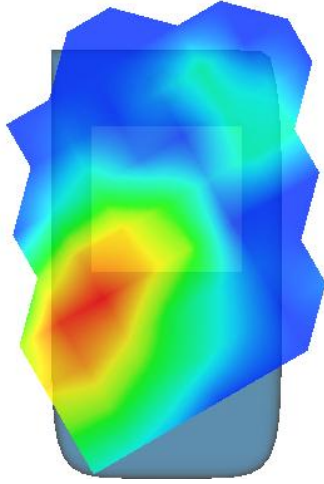
Maximum location: X=-51.00, Y=-54.00

SAR Peak: 0.35 W/kg

SAR 10g (W/Kg)	0.093874
SAR 1g (W/Kg)	0.290888

Z (mm)	0.00	4.00	9.00	14.00	19.00	24.00	29.00
SAR (W/Kg)	0.2582	0.1793	0.1100	0.0537	0.0281	0.0115	0.0001



3D screen shot	Hot spot position
	

MEASUREMENT 5

Towards-ground-middle

Type: Phone measurement (Complete)

Date of measurement: 24/8/2016

Measurement duration: 8 minutes 49 seconds

A. Experimental conditions.

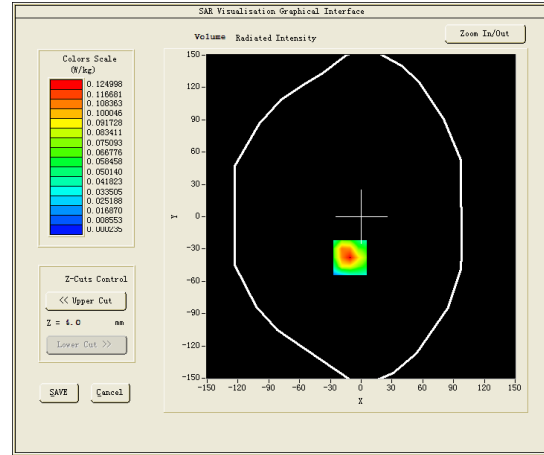
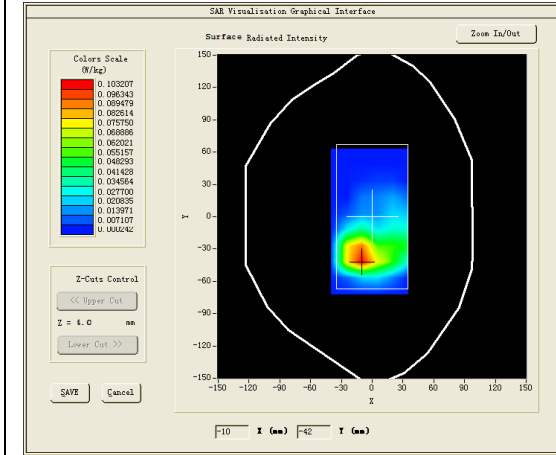
<u>Area Scan</u>	<u>dx=15mm dy=15mm</u>
<u>ZoomScan</u>	<u>5x5x7,dx=8mm dy=8mm dz=5mm,Complete</u>
<u>Phantom</u>	<u>Validation plane</u>
<u>Device Position</u>	<u>Body</u>
<u>Band</u>	<u>CUSTOM (GPRS1900 4Tx)</u>
<u>Channels</u>	<u>Middle</u>
<u>Signal</u>	<u>Duty Cycle: 2.00 (Crest factor: 2.0)</u>
<u>Conversion factor</u>	<u>4.78</u>

B. SAR Measurement Results

Frequency (MHz)	1880.000000
Relative permittivity (real part)	52.254400
Relative permittivity (imaginary part)	14.597900
Conductivity (S/m)	1.525974
Variation (%)	-2.870000

SURFACE SAR

VOLUME SAR

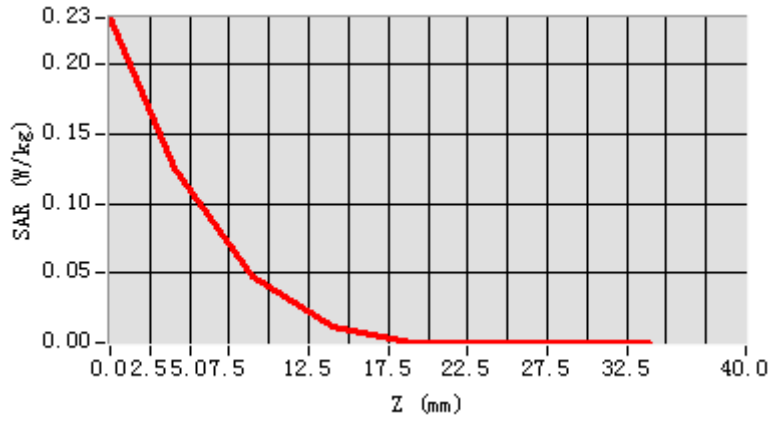


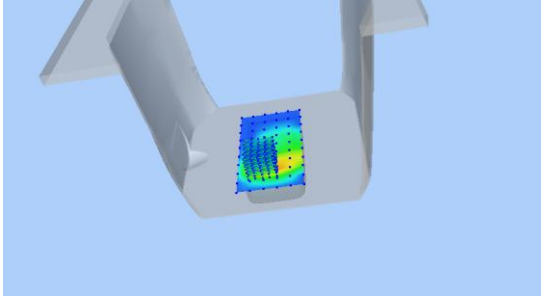
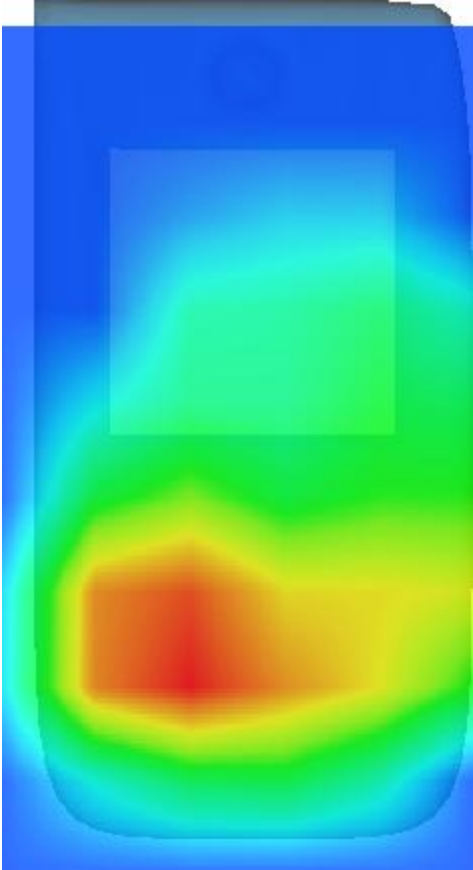
Maximum location: X=-11.00, Y=-38.00

SAR Peak: 0.23 W/kg

SAR 10g (W/Kg)	0.057078
SAR 1g (W/Kg)	0.131996

Z (mm)	0.00	4.00	9.00	14.00	19.00	24.00	29.00
SAR (W/Kg)	0.2337	0.1250	0.0473	0.0122	0.0002	0.0002	0.0002



3D screen shot	Hot spot position
	

MEASUREMENT 6

Rear Side-middle

Type: Phone measurement (Complete)

Date of measurement: 24/8/2016

Measurement duration: 8 minutes 53 seconds

A. Experimental conditions.

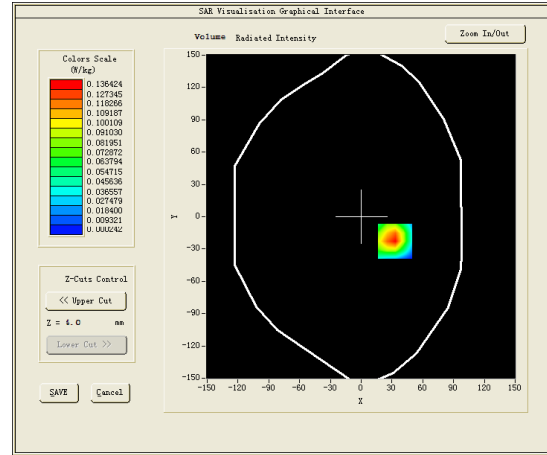
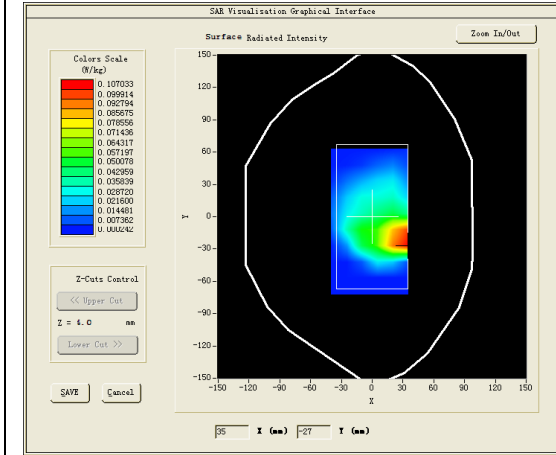
<u>Area Scan</u>	<u>dx=15mm dy=15mm</u>
<u>ZoomScan</u>	<u>5x5x7,dx=8mm dy=8mm dz=5mm,Complete</u>
<u>Phantom</u>	<u>Validation plane</u>
<u>Device Position</u>	<u>Body</u>
<u>Band</u>	<u>CUSTOM (GPRS1900 4Tx)</u>
<u>Channels</u>	<u>Middle</u>
<u>Signal</u>	<u>Duty Cycle: 2.00 (Crest factor: 2.0)</u>
<u>Conversion factor</u>	<u>4.78</u>

B. SAR Measurement Results

Frequency (MHz)	1880.000000
Relative permittivity (real part)	52.254400
Relative permittivity (imaginary part)	14.597900
Conductivity (S/m)	1.525974
Variation (%)	2.810000

SURFACE SAR

VOLUME SAR

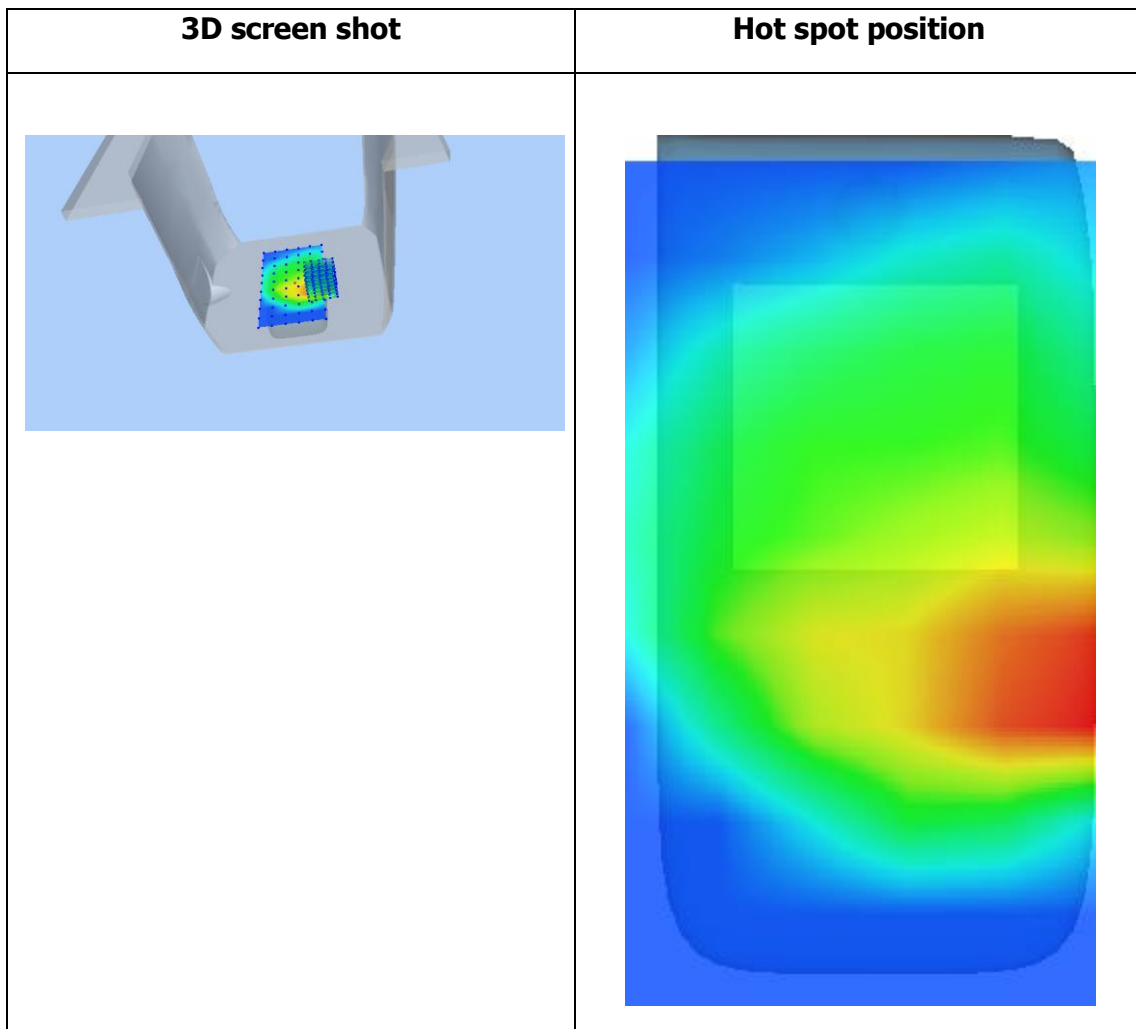
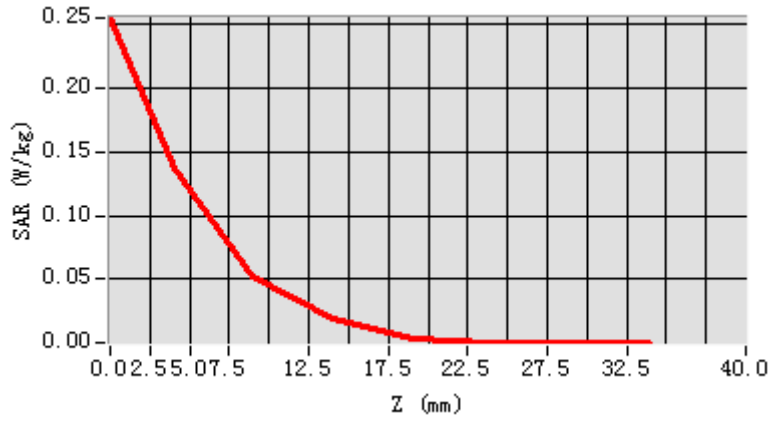


Maximum location: X=33.00, Y=-23.00

SAR Peak: 0.25 W/kg

SAR 10g (W/Kg)	0.052078
SAR 1g (W/Kg)	0.141096

Z (mm)	0.00	4.00	9.00	14.00	19.00	24.00	29.00
SAR (W/Kg)	0.2548	0.1364	0.0525	0.0188	0.0037	0.0002	0.0002



MEASUREMENT 7

Type: Phone measurement (Complete)

Date of measurement: 24/8/2016

Measurement duration: 9 minutes 31 seconds

A. Experimental conditions.

<u>Area Scan</u>	<u>dx=15mm dy=15mm</u>
<u>ZoomScan</u>	<u>5x5x7,dx=8mm dy=8mm dz=5mm,Complete</u>
<u>Phantom</u>	<u>Left head</u>
<u>Device Position</u>	<u>Cheek</u>
<u>Band</u>	<u>Band2 WCDMA1900</u>
<u>Channels</u>	<u>Middle</u>
<u>Signal</u>	<u>WCDMA (Crest factor: 1.0)</u>
<u>Conversion factor</u>	<u>4.63</u>

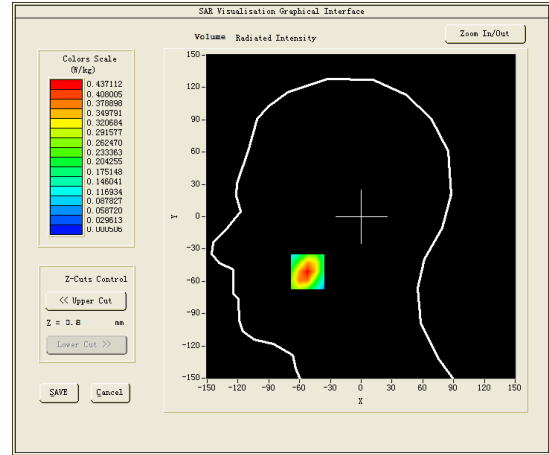
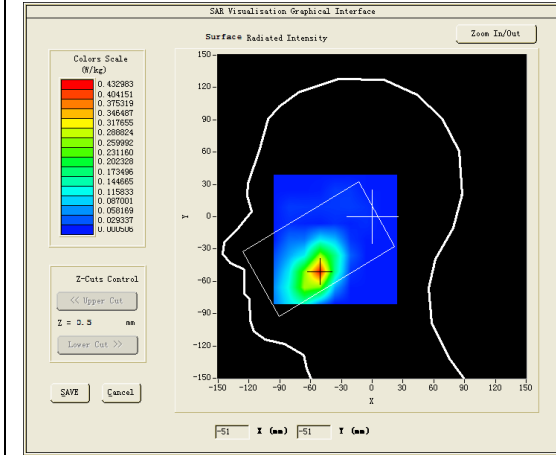
B. SAR Measurement Results

Middle Band SAR (Channel 9400):

Frequency (MHz)	1880.000000
Relative permittivity (real part)	40.054401
Relative permittivity (imaginary part)	13.497900
Conductivity (S/m)	1.409781
Variation (%)	1.160000

SURFACE SAR

VOLUME SAR

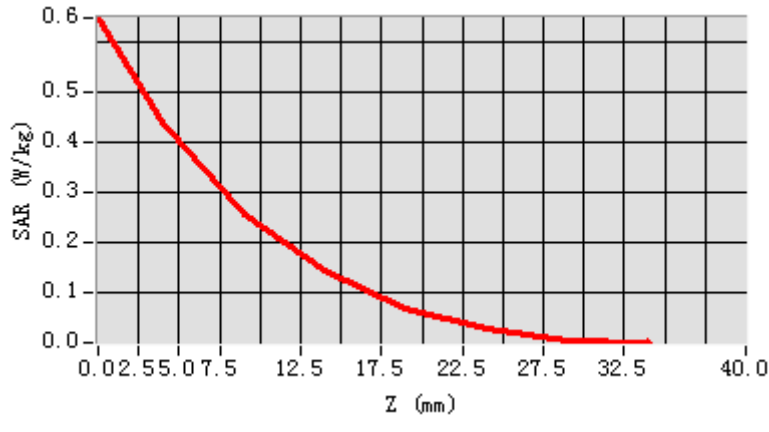


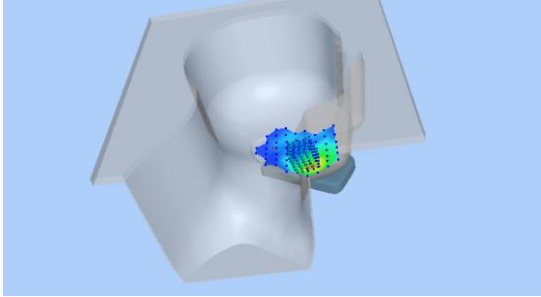
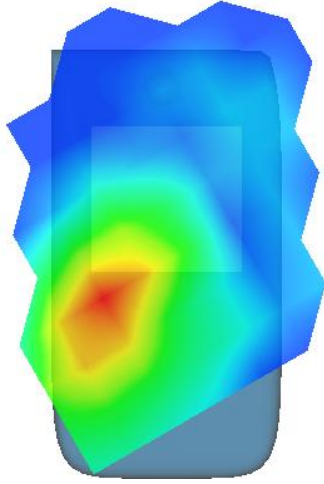
Maximum location: X=-52.00, Y=-51.00

SAR Peak: 0.67 W/kg

SAR 10g (W/Kg)	0.212395
SAR 1g (W/Kg)	0.412308

Z (mm)	0.00	4.00	9.00	14.00	19.00	24.00	29.00
SAR (W/Kg)	0.6460	0.4371	0.2546	0.1452	0.0681	0.0279	0.0059



3D screen shot	Hot spot position
	

MEASUREMENT 8

Towards-phantom-middle

Type: Phone measurement (Complete)

Date of measurement: 24/8/2016

Measurement duration: 6 minutes 58 seconds

A. Experimental conditions.

<u>Area Scan</u>	<u>dx=15mm dy=15mm</u>
<u>ZoomScan</u>	<u>5x5x7,dx=8mm dy=8mm dz=5mm,Complete</u>
<u>Phantom</u>	<u>Validation plane</u>
<u>Device Position</u>	<u>Body</u>
<u>Band</u>	<u>Band2 WCDMA1900</u>
<u>Channels</u>	<u>Middle</u>
<u>Signal</u>	<u>WCDMA (Crest factor: 1.0)</u>
<u>Conversion factor</u>	<u>4.78</u>

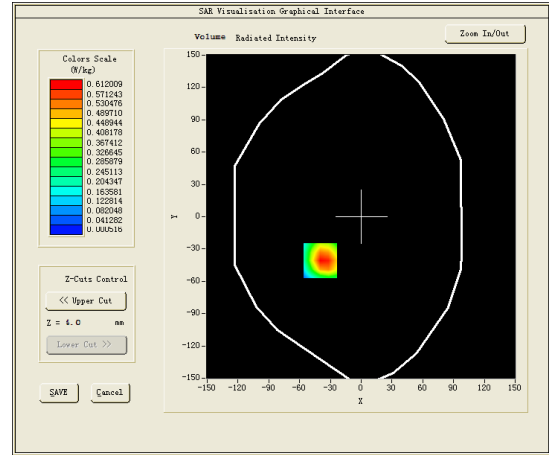
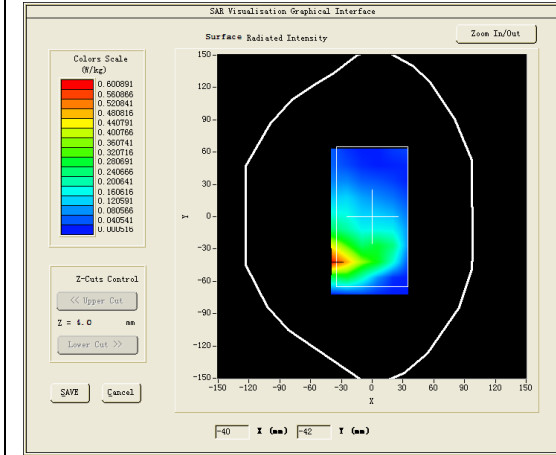
B. SAR Measurement Results

Middle Band SAR (Channel 9400):

Frequency (MHz)	1880.000000
Relative permittivity (real part)	52.254398
Relative permittivity (imaginary part)	14.597900
Conductivity (S/m)	1.524670
Variation (%)	1.660000

SURFACE SAR

VOLUME SAR

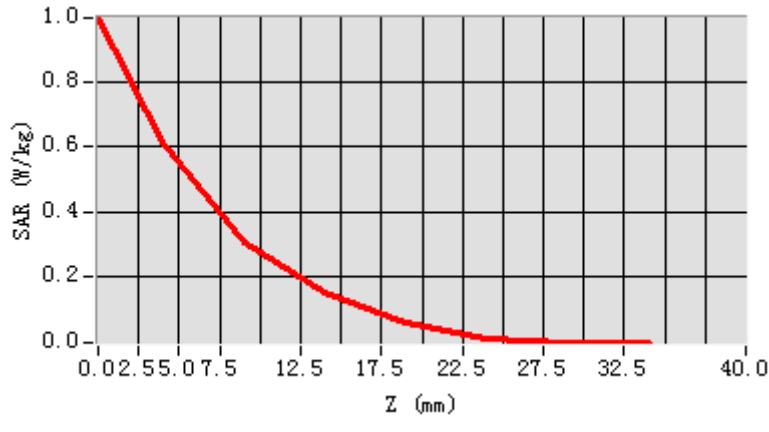


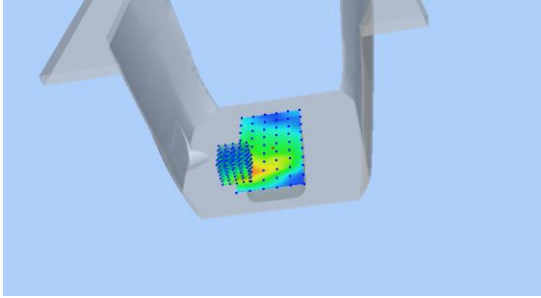
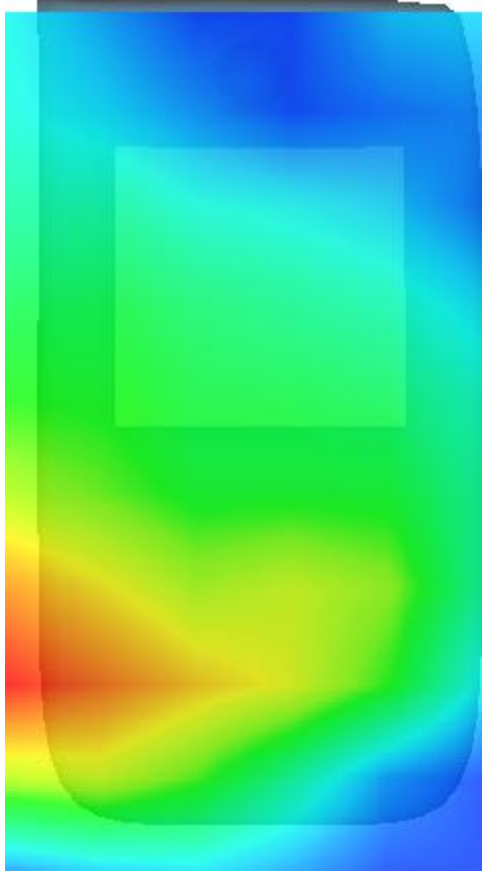
Maximum location: X=-40.00, Y=-41.00

SAR Peak: 1.09 W/kg

SAR 10g (W/Kg)	0.317666
SAR 1g (W/Kg)	0.641992

Z (mm)	0.00	4.00	9.00	14.00	19.00	24.00	29.00
SAR (W/Kg)	0.9931	0.6120	0.3096	0.1512	0.0609	0.0125	0.0005



3D screen shot	Hot spot position
	

MEASUREMENT 9

Rear Side-middle

Type: Phone measurement (Complete)

Date of measurement: 24/8/2016

Measurement duration: 11 minutes 13 seconds

A. Experimental conditions.

<u>Area Scan</u>	<u>dx=15mm dy=15mm</u>
<u>ZoomScan</u>	<u>5x5x7,dx=8mm dy=8mm dz=5mm,Complete</u>
<u>Phantom</u>	<u>Validation plane</u>
<u>Device Position</u>	<u>Body</u>
<u>Band</u>	<u>Band2 WCDMA1900</u>
<u>Channels</u>	<u>Middle</u>
<u>Signal</u>	<u>WCDMA (Crest factor: 1.0)</u>
<u>Conversion factor</u>	<u>4.78</u>

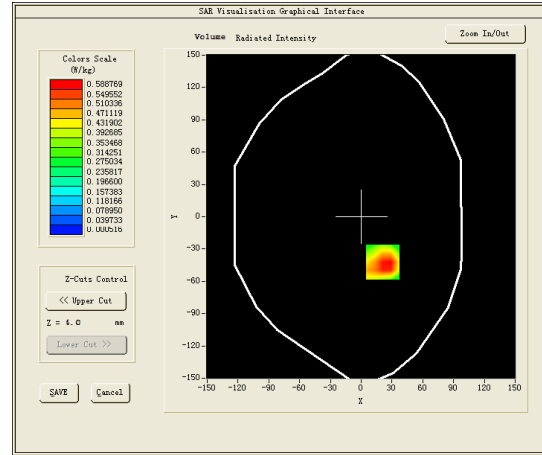
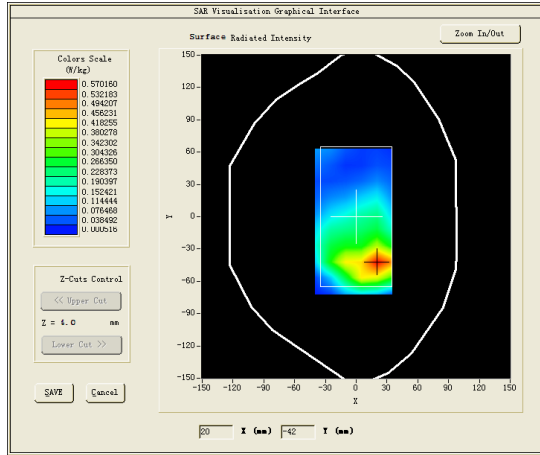
B. SAR Measurement Results

Middle Band SAR (Channel 9400):

Frequency (MHz)	1880.000000
Relative permittivity (real part)	52.254398
Relative permittivity (imaginary part)	14.597900
Conductivity (S/m)	1.524670
Variation (%)	2.440000

SURFACE SAR

VOLUME SAR

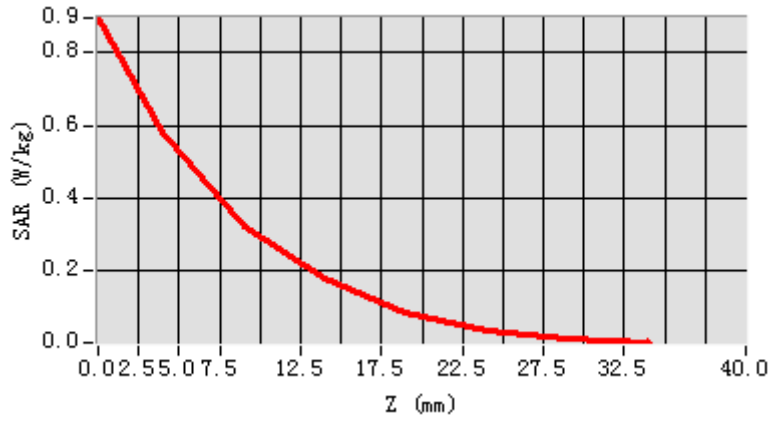


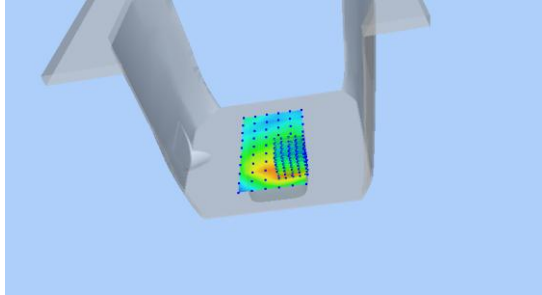
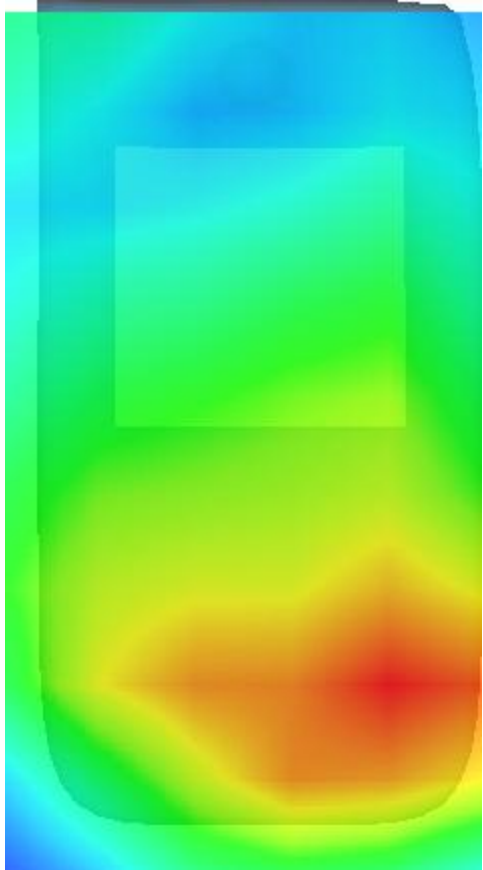
Maximum location: X=21.00, Y=-42.00

SAR Peak: 1.11 W/kg

SAR 10g (W/Kg)	0.324112
SAR 1g (W/Kg)	0.603307

Z (mm)	0.00	4.00	9.00	14.00	19.00	24.00	29.00
SAR (W/Kg)	0.8959	0.5802	0.3219	0.1774	0.0885	0.0380	0.0147



3D screen shot	Hot spot position
	

MEASUREMENT 10

Type: Phone measurement (Complete)

Date of measurement: 27/8/2016

Measurement duration: 10 minutes 44 seconds

A. Experimental conditions.

<u>Area Scan</u>	<u>dx=15mm dy=15mm</u>
<u>ZoomScan</u>	<u>5x5x7,dx=8mm dy=8mm dz=5mm,Complete</u>
<u>Phantom</u>	<u>Right head</u>
<u>Device Position</u>	<u>Cheek</u>
<u>Band</u>	<u>Band4 WCDMA1700</u>
<u>Channels</u>	<u>Middle</u>
<u>Signal</u>	<u>WCDMA (Crest factor: 1.0)</u>
<u>Conversion factor</u>	<u>4.01</u>

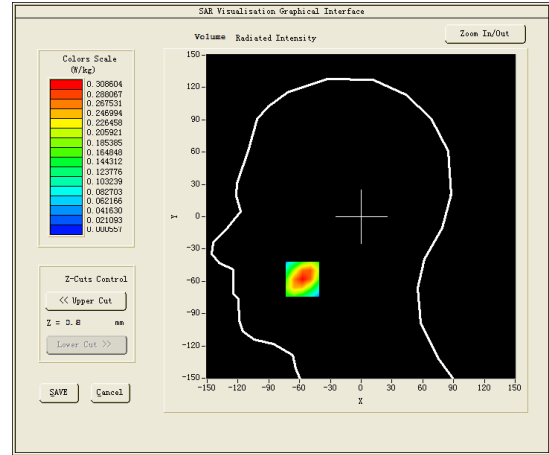
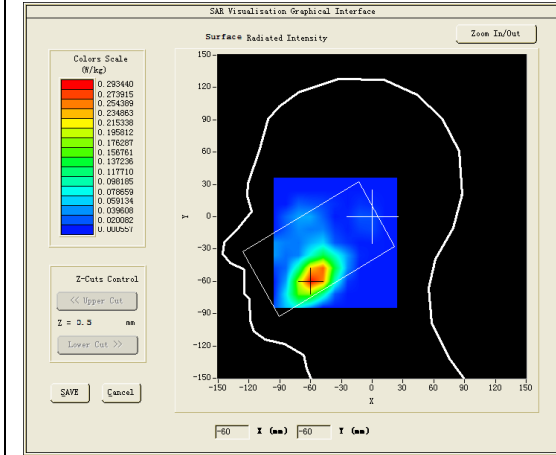
B. SAR Measurement Results

Middle Band SAR (Channel 1413):

Frequency (MHz)	1732.500000
Relative permittivity (real part)	39.690201
Relative permittivity (imaginary part)	14.005500
Conductivity (S/m)	1.347640
Variation (%)	0.800000

SURFACE SAR

VOLUME SAR

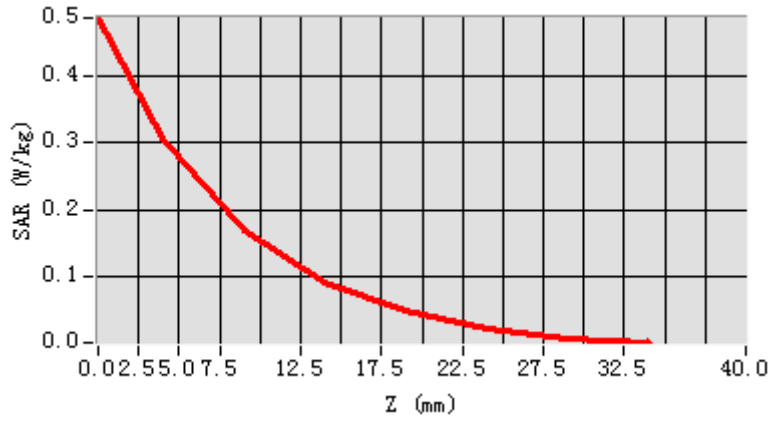


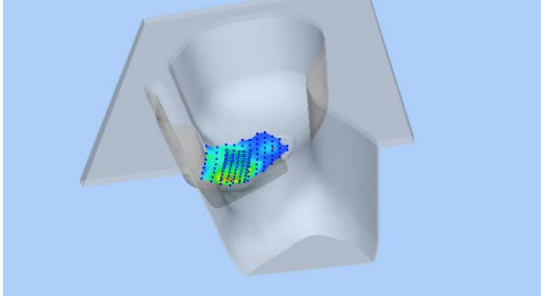
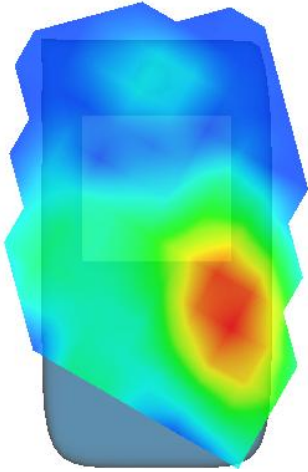
Maximum location: X=-57.00, Y=-58.00

SAR Peak: 0.51 W/kg

SAR 10g (W/Kg)	0.149292
SAR 1g (W/Kg)	0.295258

Z (mm)	0.00	4.00	9.00	14.00	19.00	24.00	29.00
SAR (W/Kg)	0.4879	0.3086	0.1698	0.0908	0.0484	0.0222	0.0057



3D screen shot	Hot spot position
	

MEASUREMENT 11

Towards-phantom-middle

Type: Phone measurement (Complete)

Date of measurement: 27/8/2016

Measurement duration: 10 minutes 19 seconds

A. Experimental conditions.

<u>Area Scan</u>	<u>dx=15mm dy=15mm</u>
<u>ZoomScan</u>	<u>5x5x7,dx=8mm dy=8mm dz=5mm,Complete</u>
<u>Phantom</u>	<u>Validation plane</u>
<u>Device Position</u>	<u>Body</u>
<u>Band</u>	<u>Band4 WCDMA1700</u>
<u>Channels</u>	<u>Middle</u>
<u>Signal</u>	<u>WCDMA (Crest factor: 1.0)</u>
<u>Conversion factor</u>	<u>4.16</u>

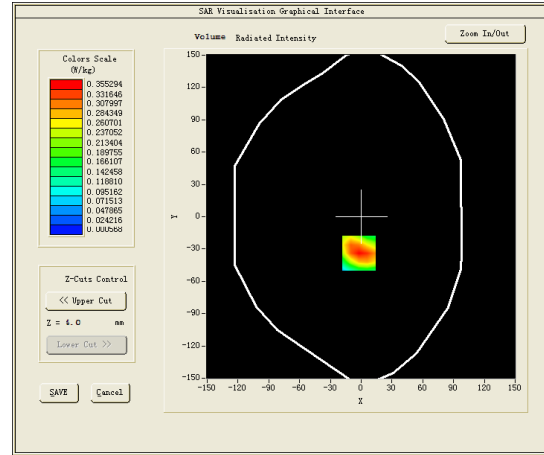
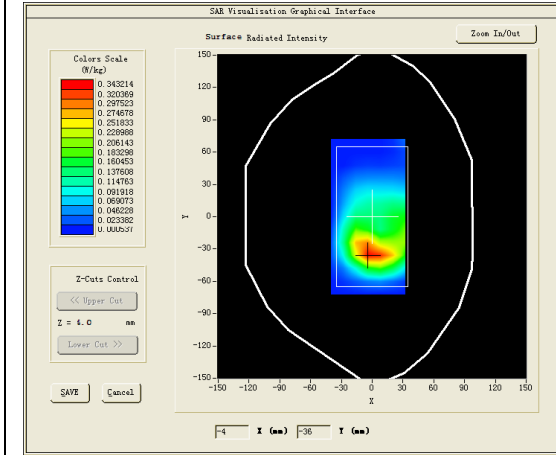
B. SAR Measurement Results

Middle Band SAR (Channel 1413):

Frequency (MHz)	1732.500000
Relative permittivity (real part)	53.297798
Relative permittivity (imaginary part)	14.675700
Conductivity (S/m)	1.412128
Variation (%)	0.960000

SURFACE SAR

VOLUME SAR

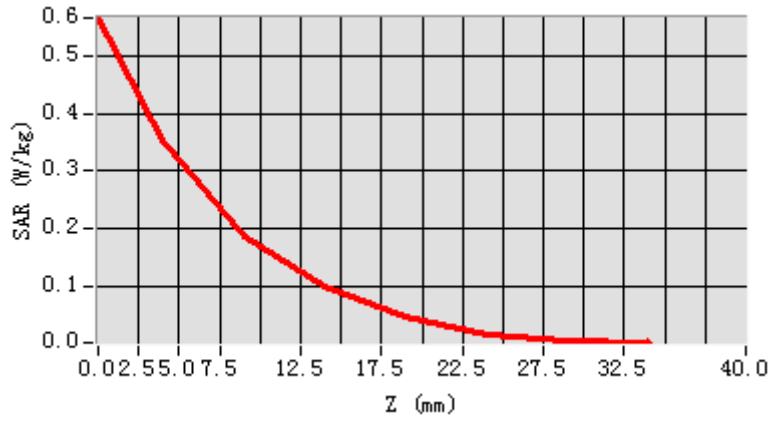


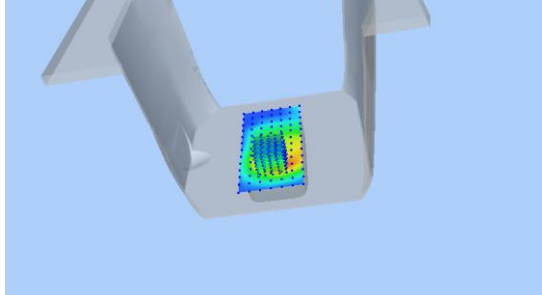
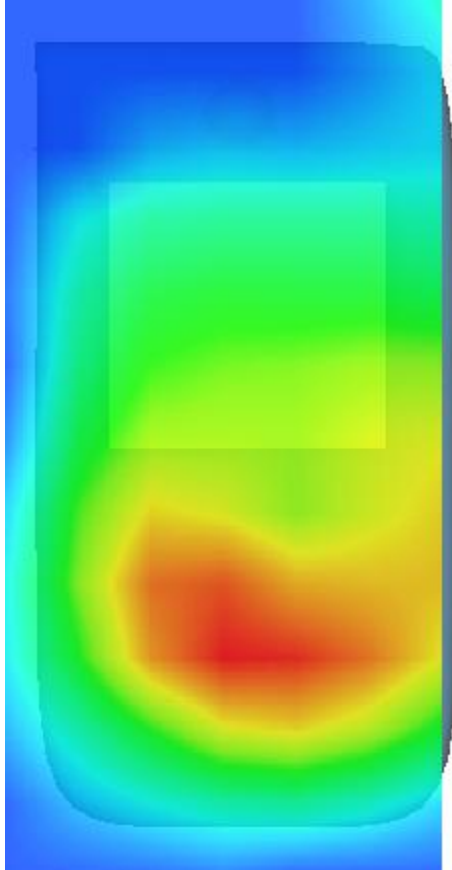
Maximum location: X=-2.00, Y=-34.00

SAR Peak: 0.59 W/kg

SAR 10g (W/Kg)	0.181949
SAR 1g (W/Kg)	0.353226

Z (mm)	0.00	4.00	9.00	14.00	19.00	24.00	29.00
SAR (W/Kg)	0.5673	0.3553	0.1867	0.0986	0.0444	0.0159	0.0040



3D screen shot	Hot spot position
	

MEASUREMENT 12

Front Side-middle

Type: Phone measurement (Complete)

Date of measurement: 27/8/2016

Measurement duration: 11 minutes 58 seconds

A. Experimental conditions.

<u>Area Scan</u>	<u>dx=15mm dy=15mm</u>
<u>ZoomScan</u>	<u>5x5x7,dx=8mm dy=8mm dz=5mm,Complete</u>
<u>Phantom</u>	<u>Validation plane</u>
<u>Device Position</u>	<u>Body</u>
<u>Band</u>	<u>Band4 WCDMA1700</u>
<u>Channels</u>	<u>Middle</u>
<u>Signal</u>	<u>WCDMA (Crest factor: 1.0)</u>
<u>Conversion factor</u>	<u>4.16</u>

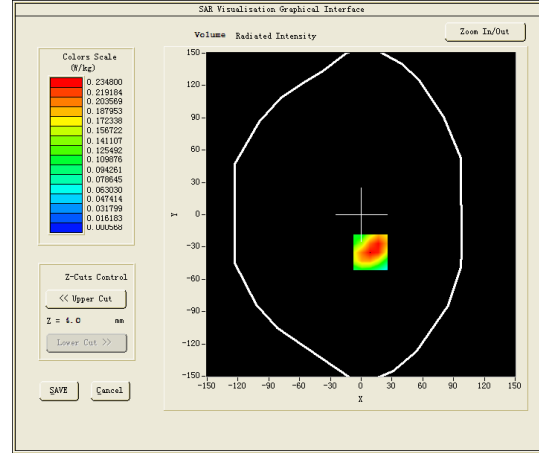
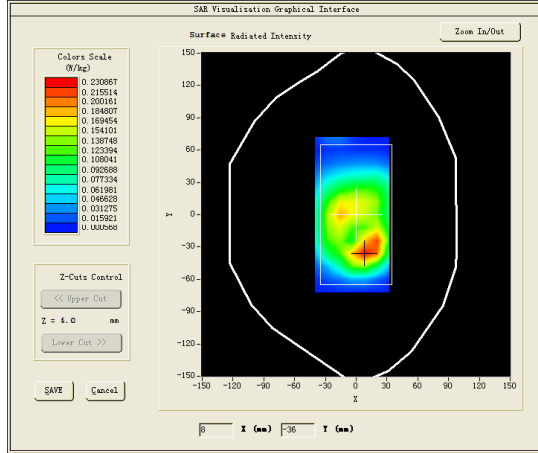
B. SAR Measurement Results

Middle Band SAR (Channel 1413):

Frequency (MHz)	1732.500000
Relative permittivity (real part)	53.297798
Relative permittivity (imaginary part)	14.675700
Conductivity (S/m)	1.412128
Variation (%)	2.350000

SURFACE SAR

VOLUME SAR

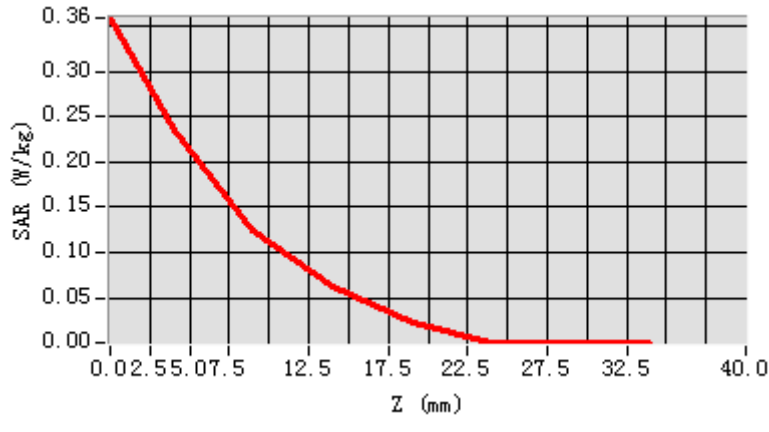


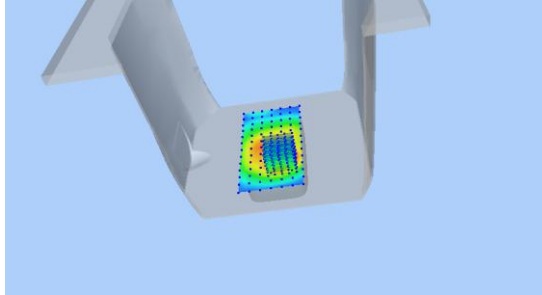
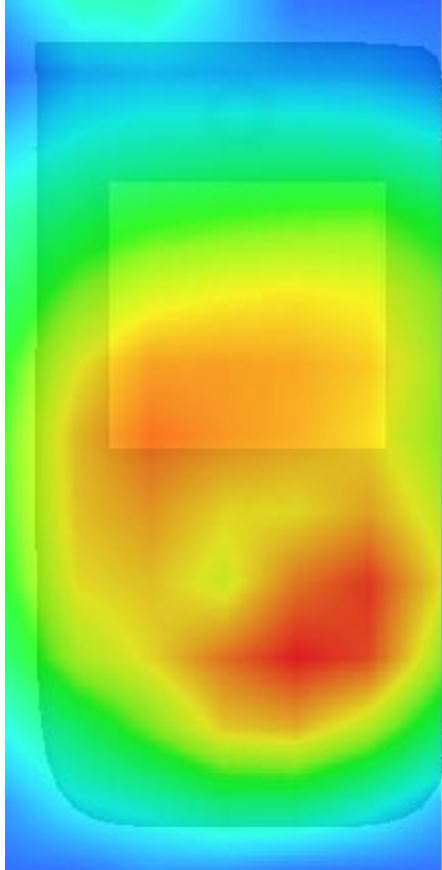
Maximum location: X=9.00, Y=-35.00

SAR Peak: 0.41 W/kg

SAR 10g (W/Kg)	0.197210
SAR 1g (W/Kg)	0.361960

Z (mm)	0.00	4.00	9.00	14.00	19.00	24.00	29.00
SAR (W/Kg)	0.3588	0.2348	0.1251	0.0628	0.0231	0.0008	0.0006



3D screen shot	Hot spot position
	

MEASUREMENT 13

Type: Phone measurement (Complete)

Date of measurement: 19/8/2016

Measurement duration: 9 minutes 57 seconds

A. Experimental conditions.

<u>Area Scan</u>	<u>dx=15mm dy=15mm</u>
<u>ZoomScan</u>	<u>5x5x7,dx=8mm dy=8mm dz=5mm,Complete</u>
<u>Phantom</u>	<u>Right head</u>
<u>Device Position</u>	<u>Cheek</u>
<u>Band</u>	<u>Band5 WCDMA850</u>
<u>Channels</u>	<u>Middle</u>
<u>Signal</u>	<u>WCDMA (Crest factor: 1.0)</u>
<u>Conversion factor</u>	<u>4.93</u>

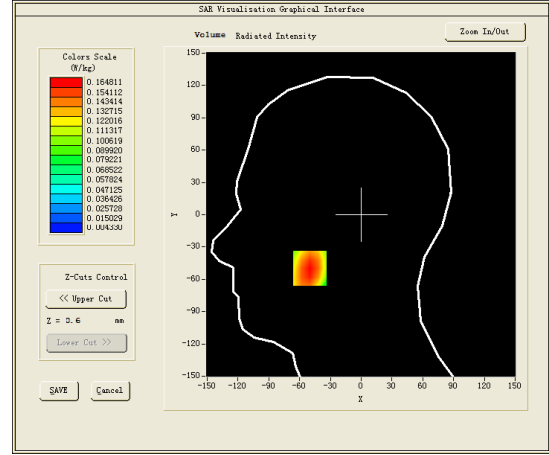
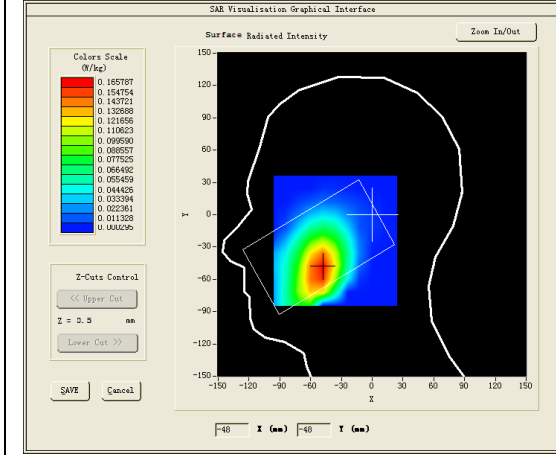
B. SAR Measurement Results

Middle Band SAR (Channel 4182):

Frequency (MHz)	836.400024
Relative permittivity (real part)	40.538380
Relative permittivity (imaginary part)	19.960159
Conductivity (S/m)	0.927482
Variation (%)	-3.260000

SURFACE SAR

VOLUME SAR

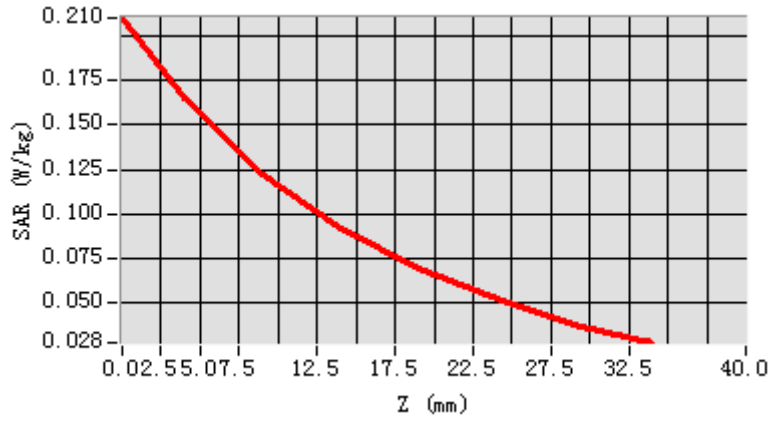


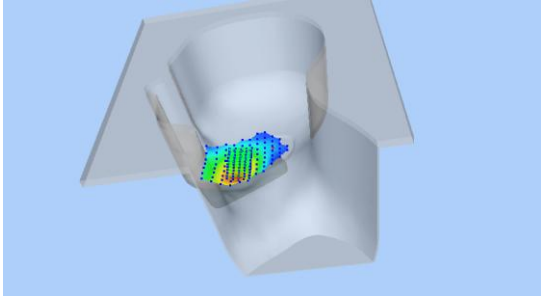
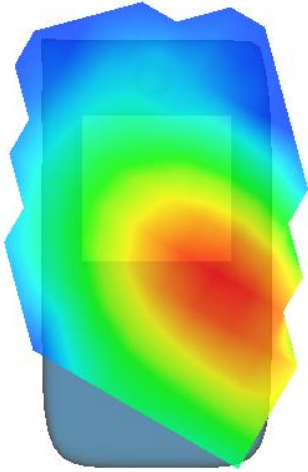
Maximum location: X=-50.00, Y=-50.00

SAR Peak: 0.23 W/kg

SAR 10g (W/Kg)	0.118105
SAR 1g (W/Kg)	0.170116

Z (mm)	0.00	4.00	9.00	14.00	19.00	24.00	29.00
SAR (W/Kg)	0.2101	0.1648	0.1224	0.0923	0.0693	0.0518	0.0381



3D screen shot	Hot spot position
	

MEASUREMENT 14

Towards-ground-middle

Type: Phone measurement (Complete)

Date of measurement: 19/8/2016

Measurement duration: 9 minutes 4 seconds

A. Experimental conditions.

<u>Area Scan</u>	<u>dx=15mm dy=15mm</u>
<u>ZoomScan</u>	<u>5x5x7,dx=8mm dy=8mm dz=5mm,Complete</u>
<u>Phantom</u>	<u>Validation plane</u>
<u>Device Position</u>	<u>Body</u>
<u>Band</u>	<u>Band5 WCDMA850</u>
<u>Channels</u>	<u>Middle</u>
<u>Signal</u>	<u>WCDMA (Crest factor: 1.0)</u>
<u>Conversion factor</u>	<u>5.07</u>

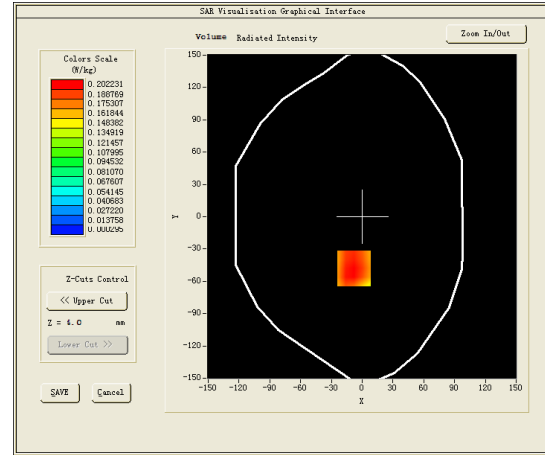
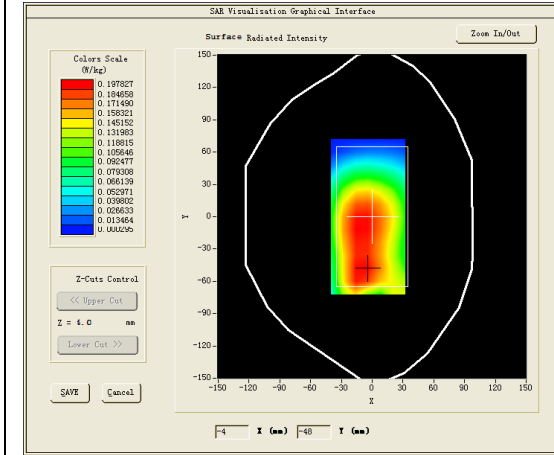
B. SAR Measurement Results

Middle Band SAR (Channel 4182):

Frequency (MHz)	836.400024
Relative permittivity (real part)	55.265800
Relative permittivity (imaginary part)	20.888281
Conductivity (S/m)	0.970609
Variation (%)	0.920000

SURFACE SAR

VOLUME SAR

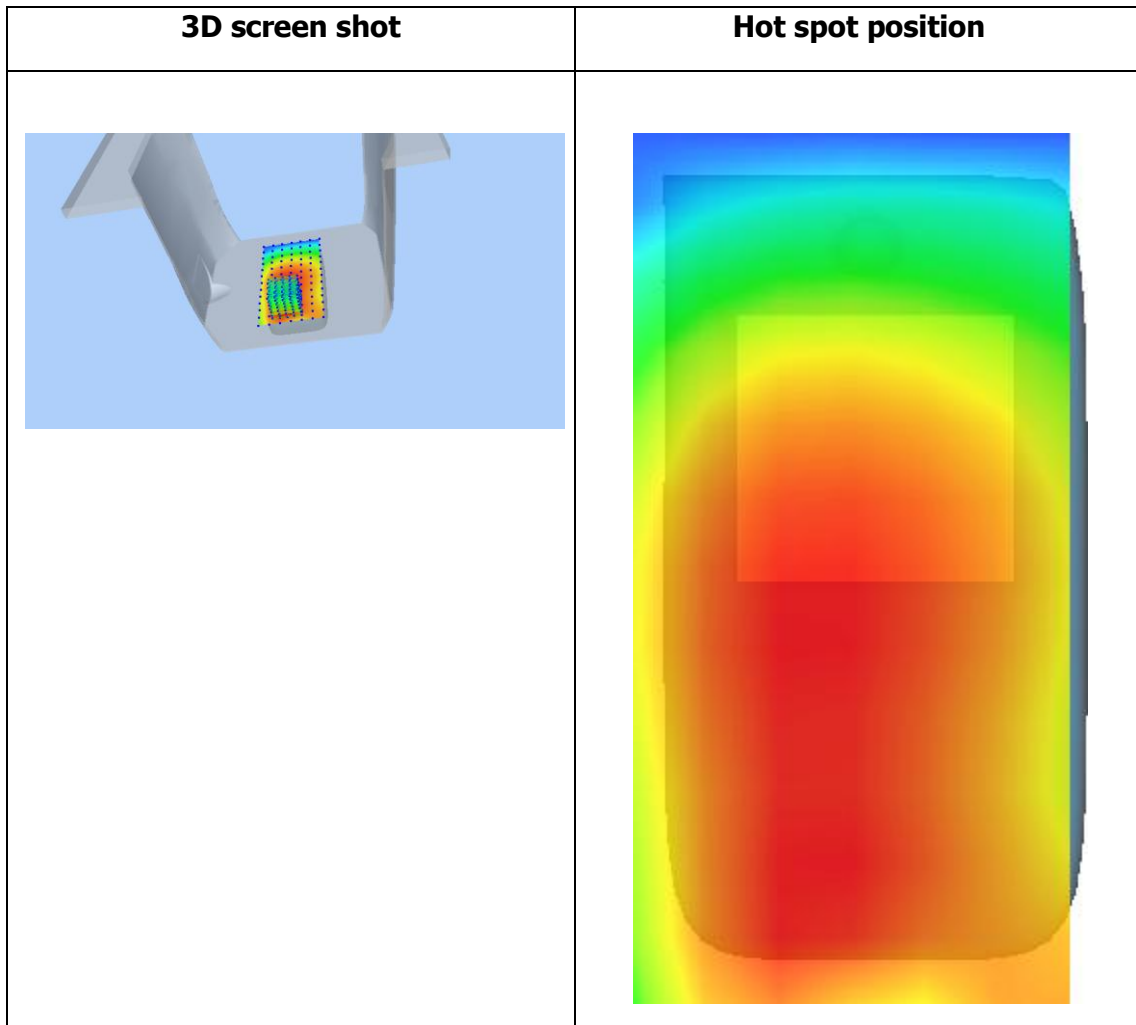
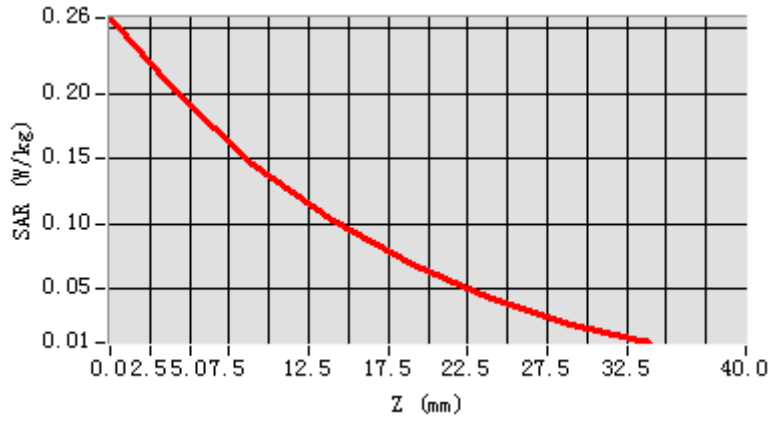


Maximum location: X=-8.00, Y=-48.00

SAR Peak: 0.29 W/kg

SAR 10g (W/Kg)	0.144412
SAR 1g (W/Kg)	0.211968

Z (mm)	0.00	4.00	9.00	14.00	19.00	24.00	29.00
SAR (W/Kg)	0.2583	0.2022	0.1459	0.1032	0.0687	0.0422	0.0226



MEASUREMENT 15

Rear Side-middle

Type: Phone measurement (Complete)

Date of measurement: 19/8/2016

Measurement duration: 9 minutes 8 seconds

A. Experimental conditions.

<u>Area Scan</u>	<u>dx=15mm dy=15mm</u>
<u>ZoomScan</u>	<u>5x5x7,dx=8mm dy=8mm dz=5mm,Complete</u>
<u>Phantom</u>	<u>Validation plane</u>
<u>Device Position</u>	<u>Body</u>
<u>Band</u>	<u>Band5 WCDMA850</u>
<u>Channels</u>	<u>Middle</u>
<u>Signal</u>	<u>WCDMA (Crest factor: 1.0)</u>
<u>Conversion factor</u>	<u>5.07</u>

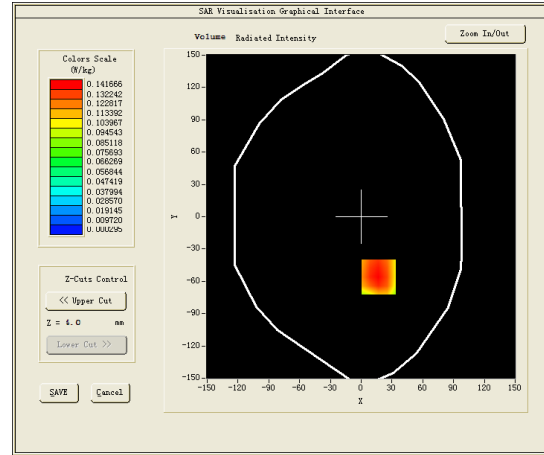
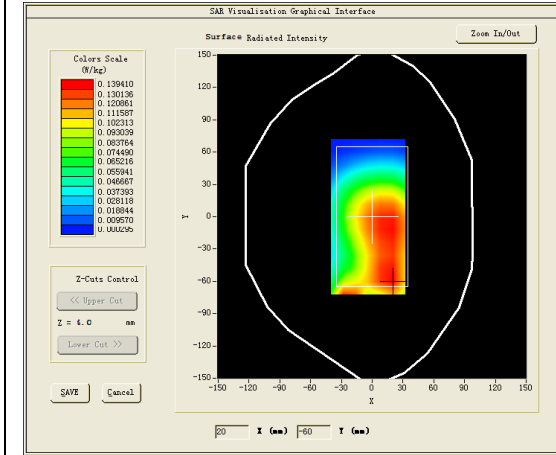
B. SAR Measurement Results

Middle Band SAR (Channel 4182):

Frequency (MHz)	836.400024
Relative permittivity (real part)	55.265800
Relative permittivity (imaginary part)	20.888281
Conductivity (S/m)	0.970609
Variation (%)	0.770000

SURFACE SAR

VOLUME SAR

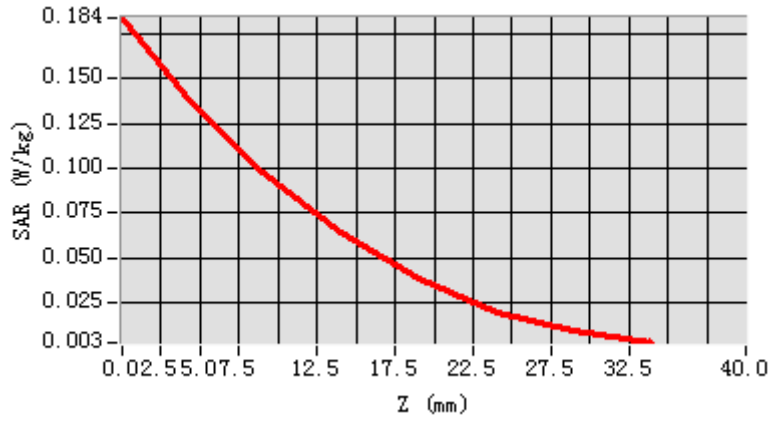


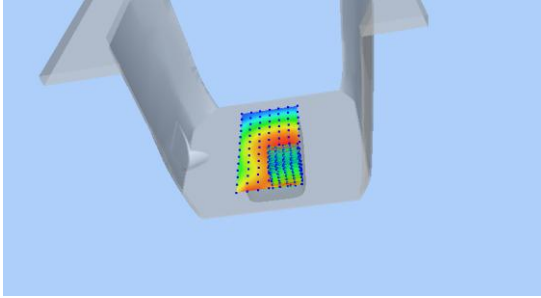
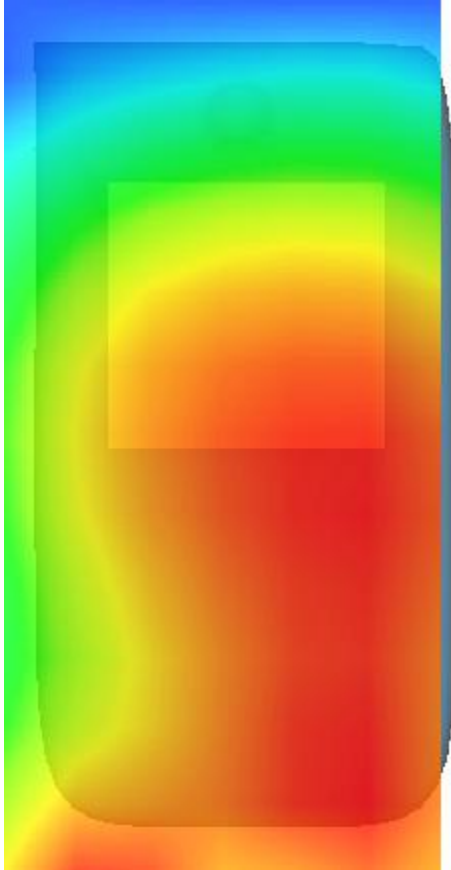
Maximum location: X=17.00, Y=-56.00

SAR Peak: 0.20 W/kg

SAR 10g (W/Kg)	0.152412
SAR 1g (W/Kg)	0.253968

Z (mm)	0.00	4.00	9.00	14.00	19.00	24.00	29.00
SAR (W/Kg)	0.2583	0.2022	0.1459	0.1032	0.0687	0.0422	0.0226



3D screen shot	Hot spot position
	

MEASUREMENT 16

20M-50RB#25

Type: Phone measurement (Complete)

Date of measurement: 24/8/2016

Measurement duration: 12 minutes 20 seconds

A. Experimental conditions.

<u>Area Scan</u>	<u>dx=15mm dy=15mm</u>
<u>ZoomScan</u>	<u>5x5x7, dx=8mm dy=8mm dz=5mm,Complete</u>
<u>Phantom</u>	<u>Right head</u>
<u>Device Position</u>	<u>Tilt</u>
<u>Band</u>	<u>LTE band 2</u>
<u>Channels</u>	<u>Middle</u>
<u>Signal</u>	<u>LTE (Crest factor: 1.0)</u>
<u>Conversion factor</u>	<u>4.63</u>

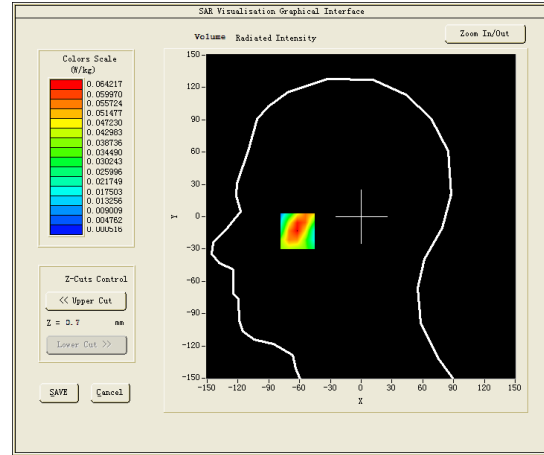
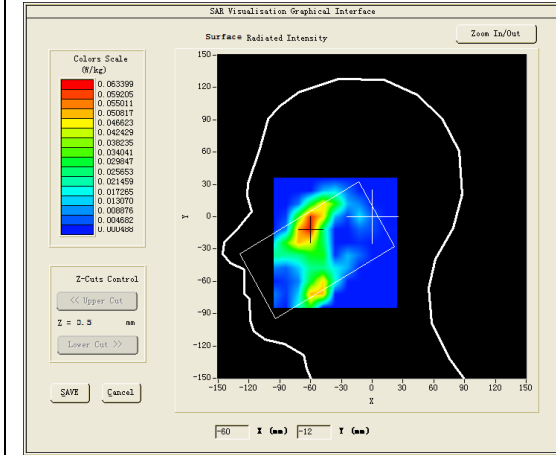
B. SAR Measurement Results

Middle Band SAR (Channel 18900):

Frequency (MHz)	1880.000000
Relative permittivity (real part)	40.054498
Relative permittivity (imaginary part)	13.497900
Conductivity (S/m)	1.410987
Variation (%)	-2.640000

SURFACE SAR

VOLUME SAR

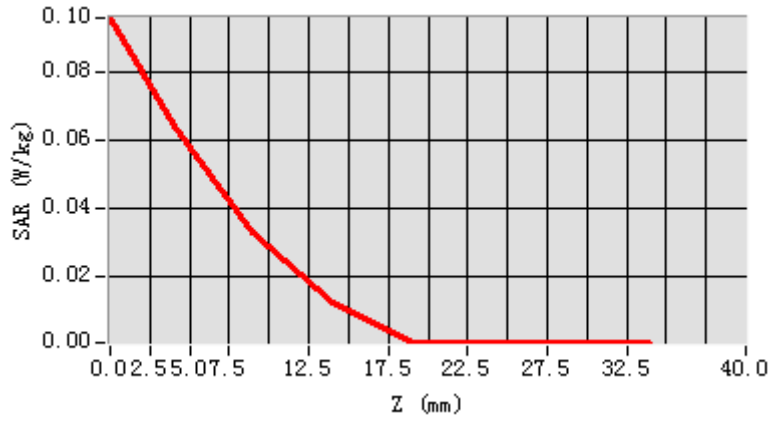


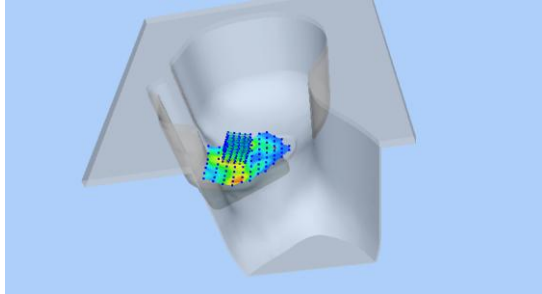
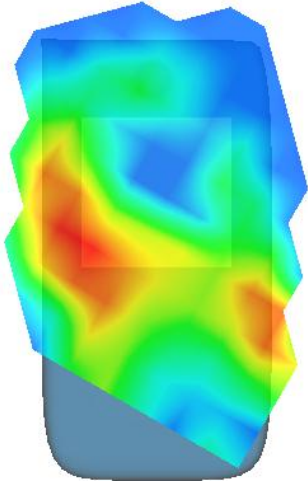
Maximum location: X=-62.00, Y=-11.00

SAR Peak: 0.11 W/kg

SAR 10g (W/Kg)	0.085972
SAR 1g (W/Kg)	0.161469

Z (mm)	0.00	4.00	9.00	14.00	19.00	24.00	29.00
SAR (W/Kg)	0.0960	0.0642	0.0327	0.0126	0.0005	0.0005	0.0005



3D screen shot	Hot spot position
	

MEASUREMENT 17

Towards-ground-20M-1%RB#0-middle

Type: Phone measurement (Complete)

Date of measurement: 24/8/2016

Measurement duration: 10 minutes 28 seconds

A. Experimental conditions.

<u>Area Scan</u>	<u>dx=15mm dy=15mm</u>
<u>ZoomScan</u>	<u>5x5x7, dx=8mm dy=8mm dz=5mm,Complete</u>
<u>Phantom</u>	<u>Validation plane</u>
<u>Device Position</u>	<u>Body</u>
<u>Band</u>	<u>LTE band 2</u>
<u>Channels</u>	<u>Middle</u>
<u>Signal</u>	<u>LTE (Crest factor: 1.0)</u>
<u>Conversion factor</u>	<u>4.78</u>

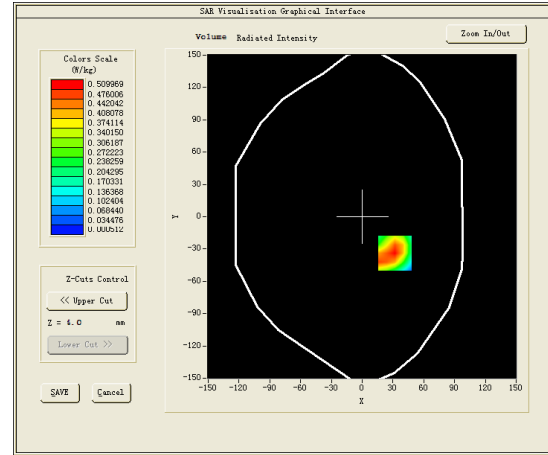
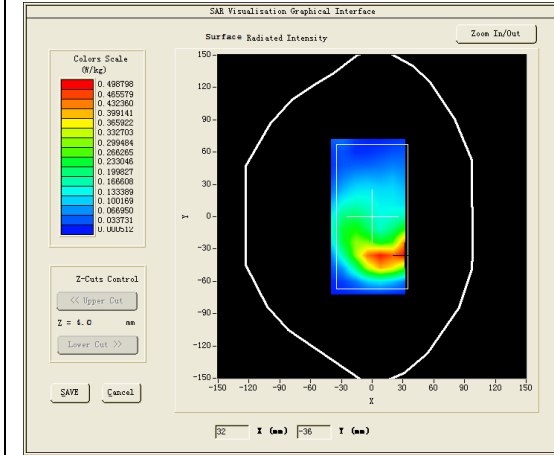
B. SAR Measurement Results

Middle Band SAR (Channel 18900):

Frequency (MHz)	1880.000000
Relative permittivity (real part)	52.254398
Relative permittivity (imaginary part)	14.597900
Conductivity (S/m)	1.524264
Variation (%)	-2.290000

SURFACE SAR

VOLUME SAR

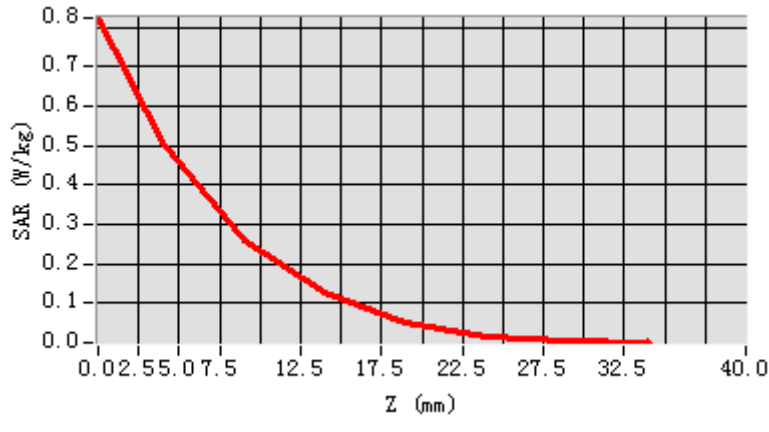


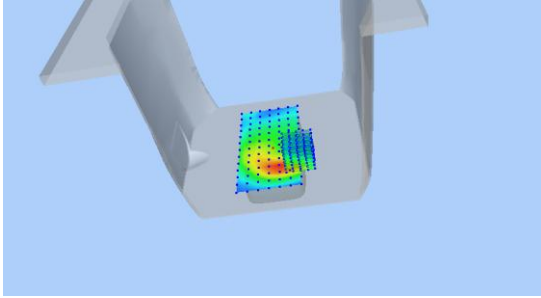
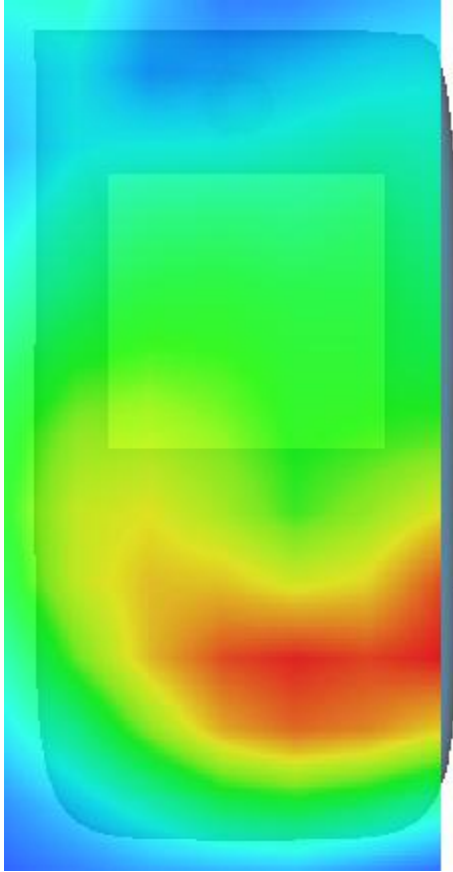
Maximum location: X=32.00, Y=-34.00

SAR Peak: 0.90 W/kg

SAR 10g (W/Kg)	0.263005
SAR 1g (W/Kg)	0.522456

Z (mm)	0.00	4.00	9.00	14.00	19.00	24.00	29.00
SAR (W/Kg)	0.8235	0.5100	0.2592	0.1255	0.0498	0.0159	0.0031



3D screen shot	Hot spot position
	

MEASUREMENT 18

Bottom-side-20M-50RB#25-middle

Type: Phone measurement (Complete)

Date of measurement: 24/8/2016

Measurement duration: 7 minutes 56 seconds

A. Experimental conditions.

<u>Area Scan</u>	<u>dx=15mm dy=15mm</u>
<u>ZoomScan</u>	<u>5x5x7, dx=8mm dy=8mm dz=5mm,Complete</u>
<u>Phantom</u>	<u>Validation plane</u>
<u>Device Position</u>	<u>Body</u>
<u>Band</u>	<u>LTE band 2</u>
<u>Channels</u>	<u>Middle</u>
<u>Signal</u>	<u>LTE (Crest factor: 1.0)</u>
<u>Conversion factor</u>	<u>4.78</u>

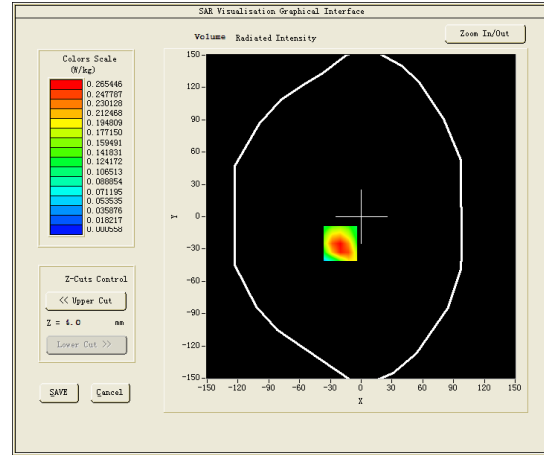
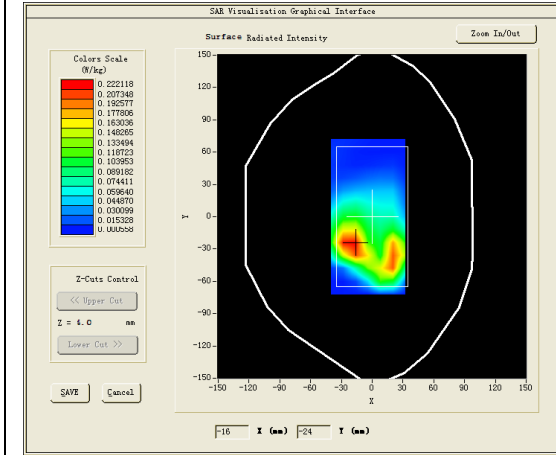
B. SAR Measurement Results

Middle Band SAR (Channel 18900):

Frequency (MHz)	1880.000000
Relative permittivity (real part)	52.254398
Relative permittivity (imaginary part)	14.597900
Conductivity (S/m)	1.524264
Variation (%)	2.200000

SURFACE SAR

VOLUME SAR

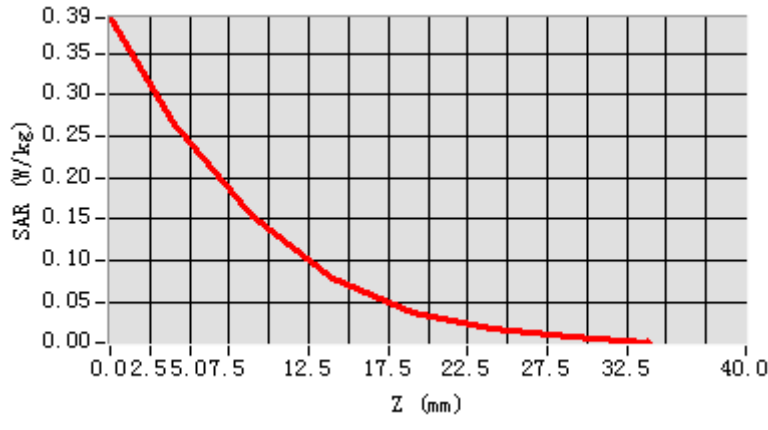


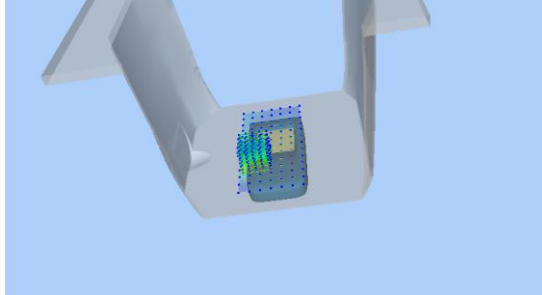
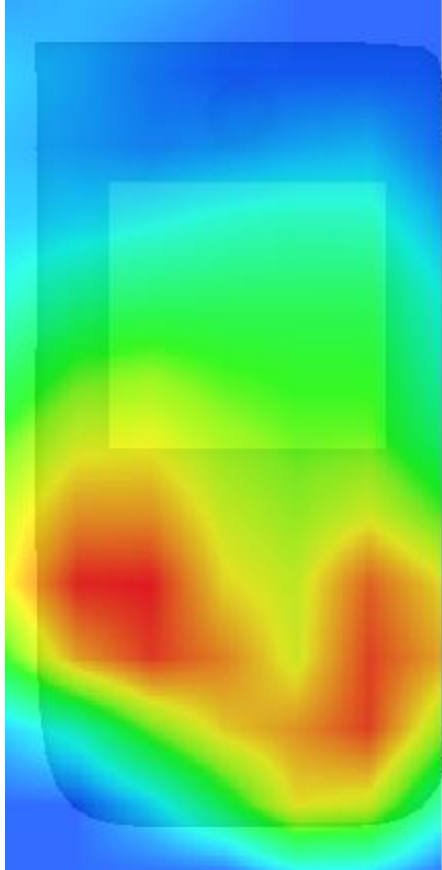
Maximum location: X=-20.00, Y=-25.00

SAR Peak: 0.43 W/kg

SAR 10g (W/Kg)	0.219224
SAR 1g (W/Kg)	0.444702

Z (mm)	0.00	4.00	9.00	14.00	19.00	24.00	29.00
SAR (W/Kg)	0.3927	0.2654	0.1522	0.0791	0.0369	0.0176	0.0069



3D screen shot	Hot spot position
	

MEASUREMENT 19

20M-50RB#25

Type: Phone measurement (Complete)

Date of measurement: 27/8/2016

Measurement duration: 8 minutes 39 seconds

A. Experimental conditions.

<u>Area Scan</u>	<u>dx=15mm dy=15mm</u>
<u>ZoomScan</u>	<u>5x5x7,dx=8mm dy=8mm dz=5mm,Complete</u>
<u>Phantom</u>	<u>Right head</u>
<u>Device Position</u>	<u>Tilt</u>
<u>Band</u>	<u>LTE band 4</u>
<u>Channels</u>	<u>Middle</u>
<u>Signal</u>	<u>LTE (Crest factor: 1.0)</u>
<u>Conversion factor</u>	<u>4.01</u>

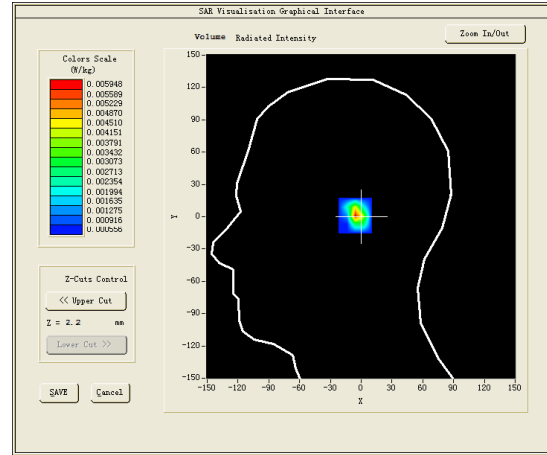
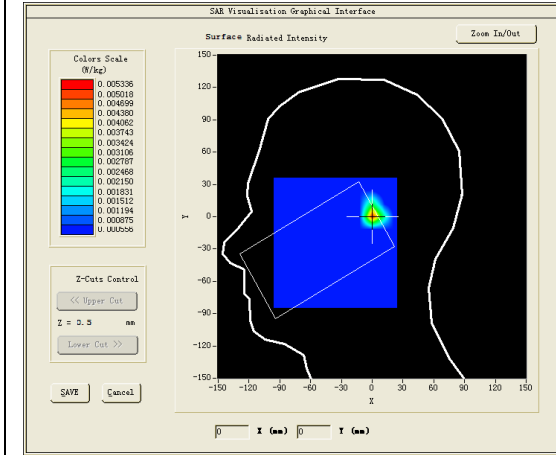
B. SAR Measurement Results

Middle Band SAR (Channel 20175):

Frequency (MHz)	1732.500000
Relative permittivity (real part)	39.739349
Relative permittivity (imaginary part)	13.991050
Conductivity (S/m)	1.346639
Variation (%)	0.000000

SURFACE SAR

VOLUME SAR

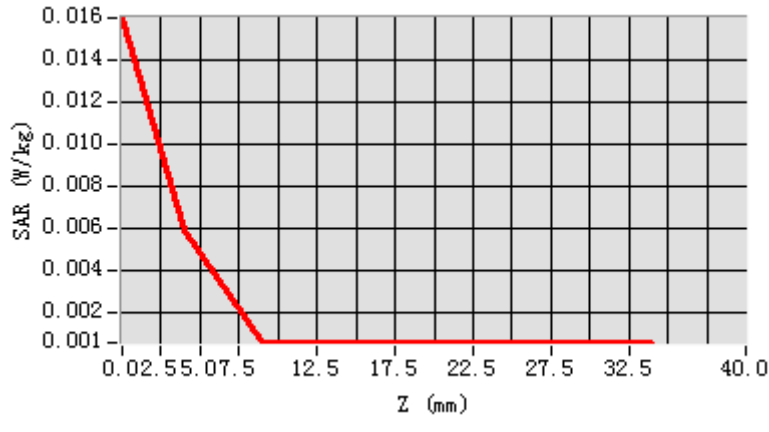


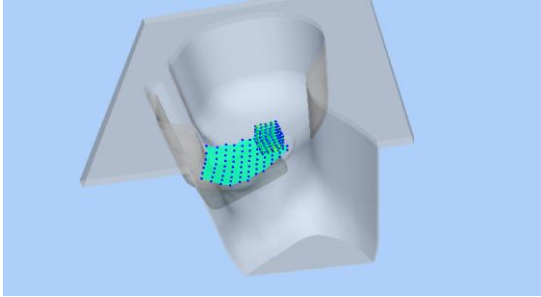
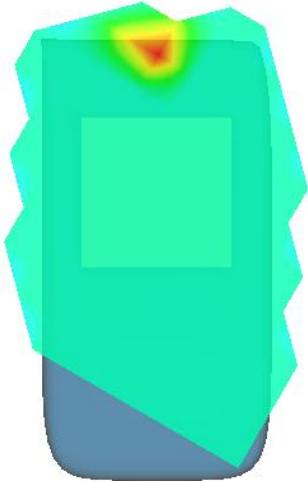
Maximum location: X=1.00, Y=1.00

SAR Peak: 0.02 W/kg

SAR 10g (W/Kg)	0.022875
SAR 1g (W/Kg)	0.048984

Z (mm)	0.00	4.00	9.00	14.00	19.00	24.00	29.00
SAR (W/Kg)	0.0160	0.0059	0.0006	0.0006	0.0006	0.0006	0.0006



3D screen shot	Hot spot position
	

MEASUREMENT 20

Towards-phantom-20M-20M-1%RB#0-middle

Type: Phone measurement (Complete)

Date of measurement: 27/8/2016

Measurement duration: 10 minutes 26 seconds

A. Experimental conditions.

<u>Area Scan</u>	<u>dx=15mm dy=15mm</u>
<u>ZoomScan</u>	<u>5x5x7,dx=8mm dy=8mm dz=5mm,Complete</u>
<u>Phantom</u>	<u>Validation plane</u>
<u>Device Position</u>	<u>Body</u>
<u>Band</u>	<u>LTE band 4</u>
<u>Channels</u>	<u>Middle</u>
<u>Signal</u>	<u>LTE (Crest factor: 1.0)</u>
<u>Conversion factor</u>	<u>4.16</u>

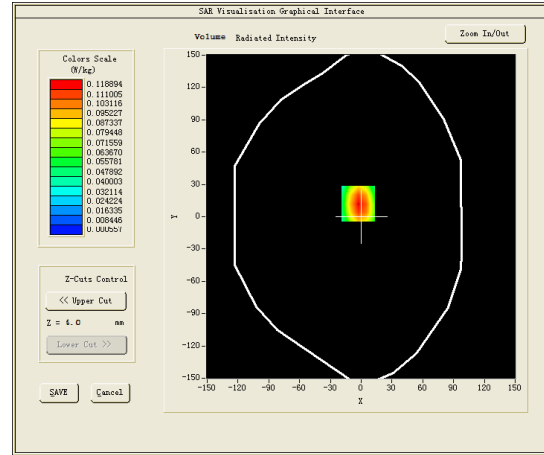
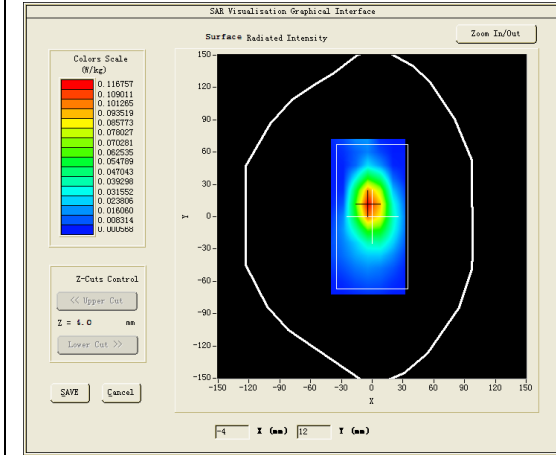
B. SAR Measurement Results

Middle Band SAR (Channel 20175):

Frequency (MHz)	1732.500000
Relative permittivity (real part)	53.306702
Relative permittivity (imaginary part)	14.680750
Conductivity (S/m)	1.413022
Variation (%)	2.550000

SURFACE SAR

VOLUME SAR

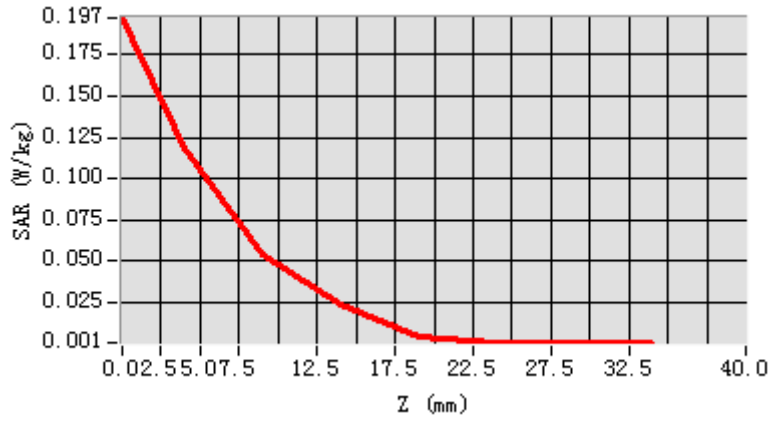


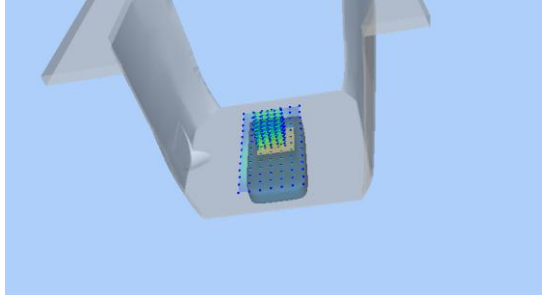
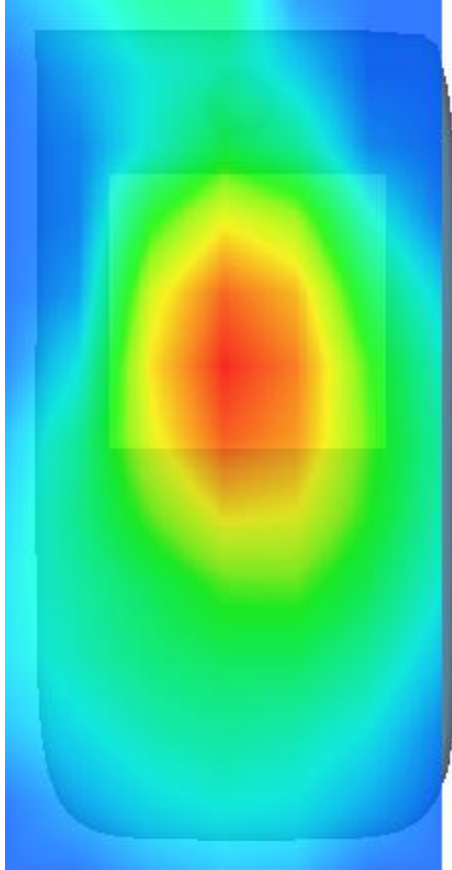
Maximum location: X=-3.00, Y=12.00

SAR Peak: 0.21 W/kg

SAR 10g (W/Kg)	0.103384
SAR 1g (W/Kg)	0.220704

Z (mm)	0.00	4.00	9.00	14.00	19.00	24.00	29.00
SAR (W/Kg)	0.1973	0.1189	0.0544	0.0235	0.0040	0.0006	0.0006



3D screen shot	Hot spot position
	

MEASUREMENT 21

Rear-side-20M-50%RB#25-middle

Type: Phone measurement (Complete)

Date of measurement: 27/8/2016

Measurement duration: 10 minutes 26 seconds

A. Experimental conditions.

<u>Area Scan</u>	<u>dx=15mm dy=15mm</u>
<u>ZoomScan</u>	<u>5x5x7,dx=8mm dy=8mm dz=5mm,Complete</u>
<u>Phantom</u>	<u>Validation plane</u>
<u>Device Position</u>	<u>Body</u>
<u>Band</u>	<u>LTE band 4</u>
<u>Channels</u>	<u>Middle</u>
<u>Signal</u>	<u>LTE (Crest factor: 1.0)</u>
<u>Conversion factor</u>	<u>4.16</u>

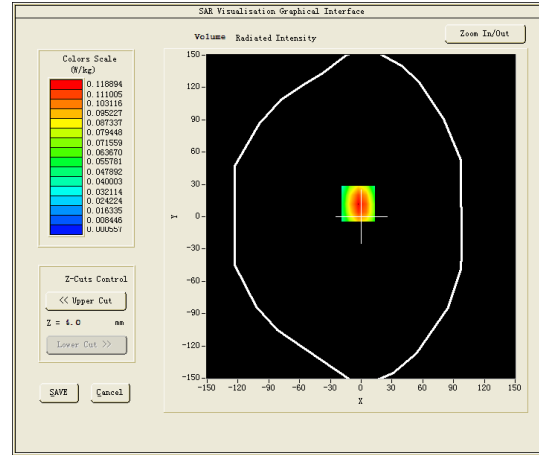
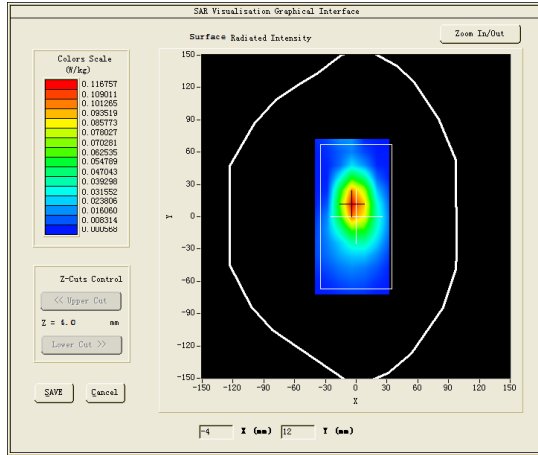
B. SAR Measurement Results

Middle Band SAR (Channel 20175):

Frequency (MHz)	1732.500000
Relative permittivity (real part)	53.306702
Relative permittivity (imaginary part)	14.680750
Conductivity (S/m)	1.413022
Variation (%)	-0.570000

SURFACE SAR

VOLUME SAR

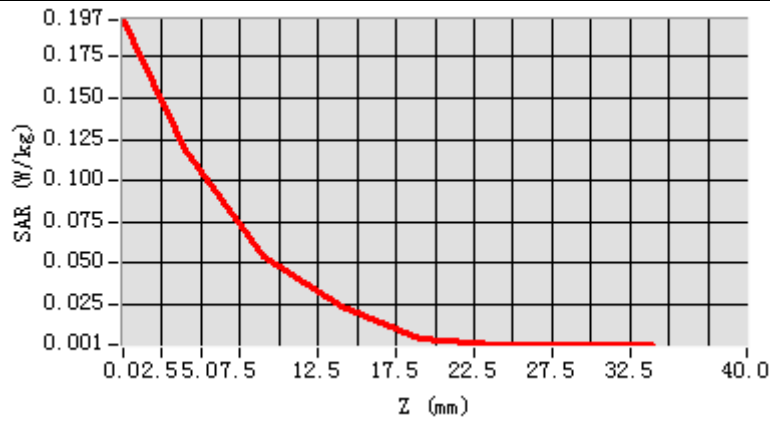


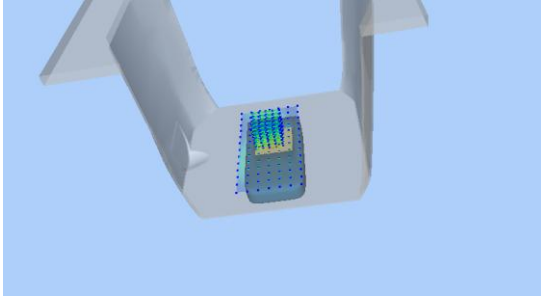
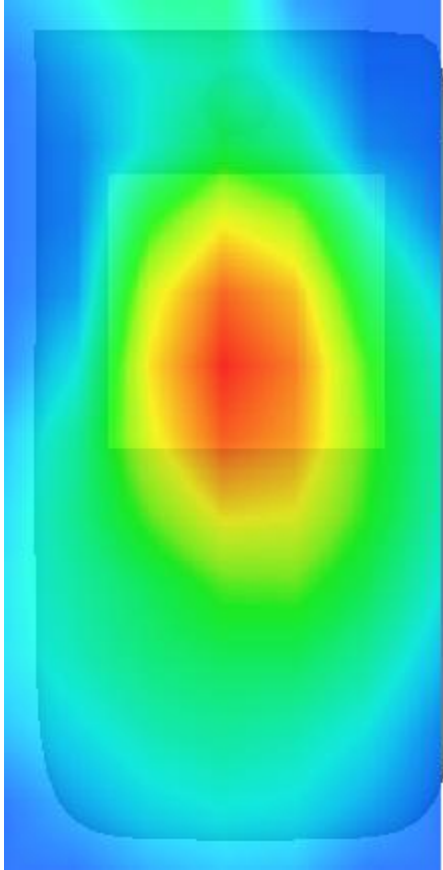
Maximum location: X=-3.00, Y=12.00

SAR Peak: 0.21 W/kg

SAR 10g (W/Kg)	0.176384
SAR 1g (W/Kg)	0.370704

Z (mm)	0.00	4.00	9.00	14.00	19.00	24.00	29.00
SAR (W/Kg)	0.1973	0.1189	0.0544	0.0235	0.0040	0.0006	0.0006



3D screen shot	Hot spot position
	

MEASUREMENT 22

20M-50RB#25

Type: Phone measurement (Complete)

Date of measurement: 29/8/2016

Measurement duration: 9 minutes 41 seconds

A. Experimental conditions.

<u>Area Scan</u>	<u>dx=12mm dy=12mm</u>
<u>ZoomScan</u>	<u>5x5x7,dx=8mm dy=8mm dz=5mm,Complete</u>
<u>Phantom</u>	<u>Right head</u>
<u>Device Position</u>	<u>Cheek</u>
<u>Band</u>	<u>LTE band 7</u>
<u>Channels</u>	<u>Middle</u>
<u>Signal</u>	<u>LTE (Crest factor: 1.0)</u>
<u>Conversion factor</u>	<u>3.92</u>

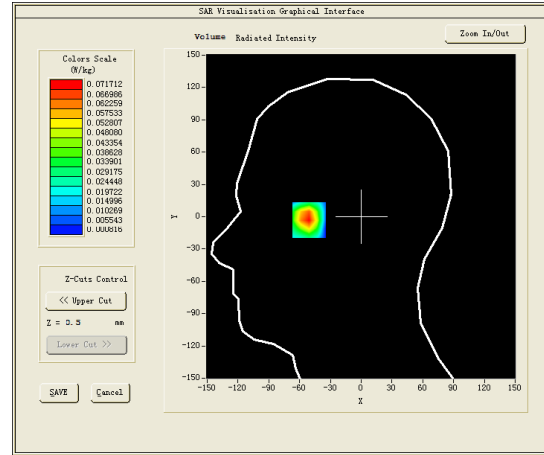
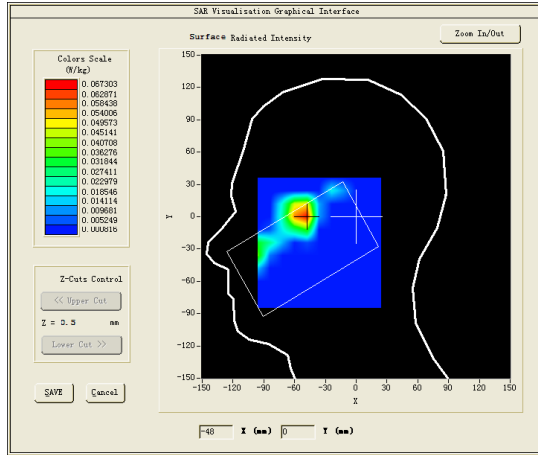
B. SAR Measurement Results

Middle Band SAR (Channel 21100):

Frequency (MHz)	2535.000000
Relative permittivity (real part)	39.062801
Relative permittivity (imaginary part)	13.774200
Conductivity (S/m)	1.939867
Variation (%)	0.000000

SURFACE SAR

VOLUME SAR

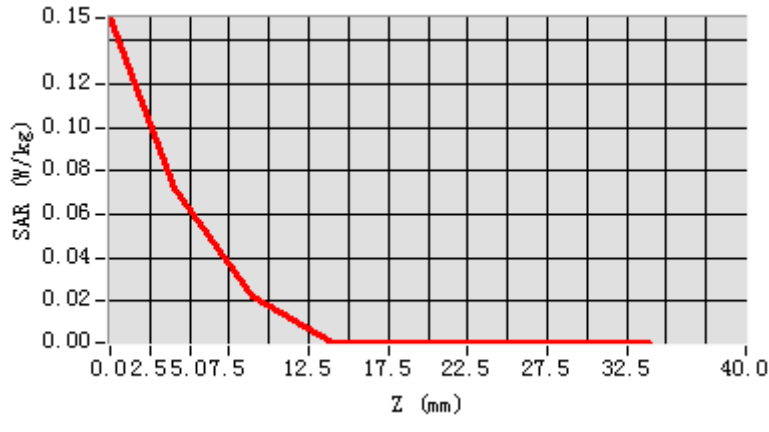


Maximum location: X=-51.00, Y=1.00

SAR Peak: 0.15 W/kg

SAR 10g (W/Kg)	0.071244
SAR 1g (W/Kg)	0.171587

Z (mm)	0.00	4.00	9.00	14.00	19.00	24.00	29.00
SAR (W/Kg)	0.1504	0.0717	0.0223	0.0011	0.0008	0.0008	0.0008



3D screen shot	Hot spot position
