



SATIMO 225, rue Pierre Rivoalon 29200 Brest - France  
Tel: +33 (0)2 98 05 13 34; Fax: +33 (0)2 98 05 53 87; [www.satimo.com](http://www.satimo.com)



## **Annex A: System Check**

**Project Name : X601-LTE**

**Report Number:  
FCC16083896A-6**

## MEASUREMENT 1

### HEAD

Type: Validation measurement (Complete)

Date of measurement: 19/8/2016

Measurement duration: 11 minutes 48 seconds

### A. Experimental conditions.

<b><u>Area Scan</u></b>	<u>dx=12mm dy=12mm</u>
<b><u>ZoomScan</u></b>	<u>5x5x7,dx=8mm dy=8mm</u> <u>dz=5mm,Complete</u>
<b><u>Phantom</u></b>	<u>Validation plane</u>
<b><u>Device Position</u></b>	<u>Dipole</u>
<b><u>Band</u></b>	<u>CW835</u>
<b><u>Channels</u></b>	<u>Middle</u>
<b><u>Signal</u></b>	<u>CW (Crest factor: 1.0)</u>

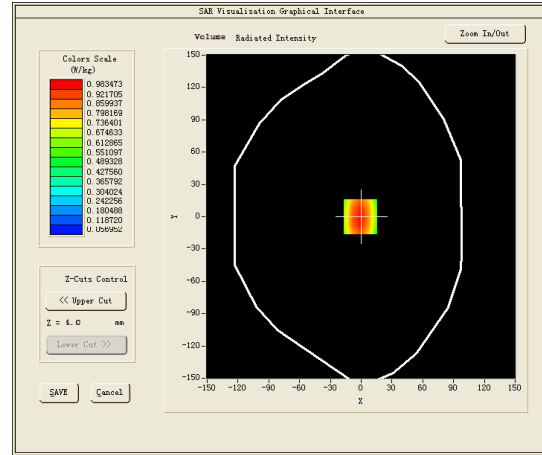
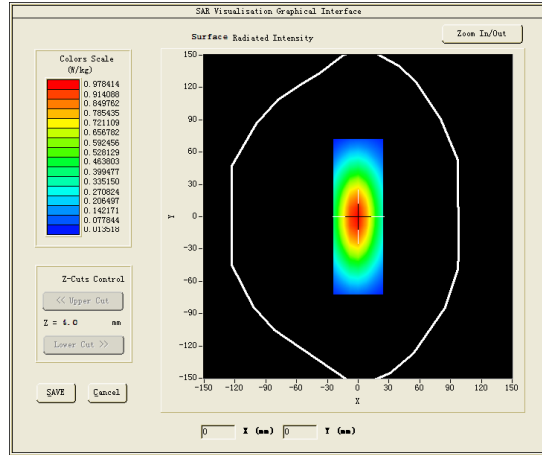
### B. SAR Measurement Results

Middle Band SAR (Channel -1):

<b>Frequency (MHz)</b>	835.000000
<b>Relative permittivity (real part)</b>	40.526699
<b>Relative permittivity (imaginary part)</b>	19.965200
<b>Conductivity (S/m)</b>	0.926163
<b>Variation (%)</b>	0.920000

### SURFACE SAR

### VOLUME SAR

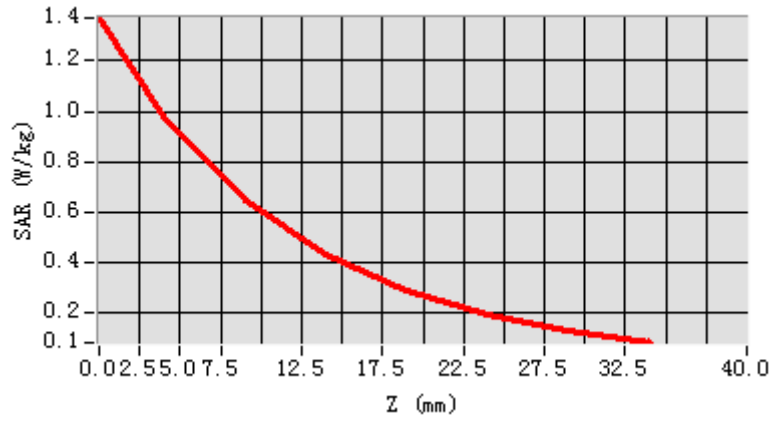


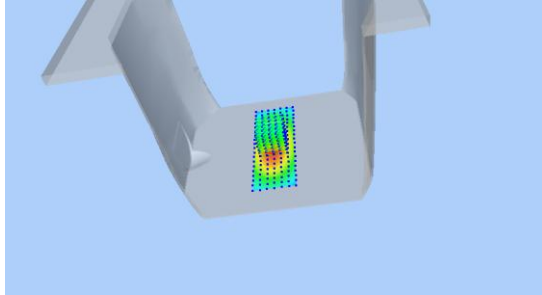
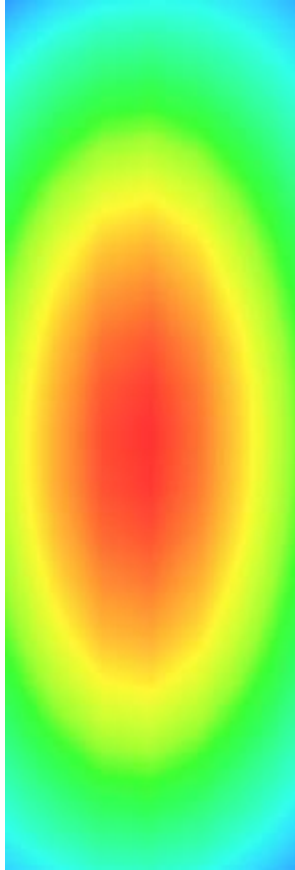
**Maximum location: X=-1.00, Y=0.00**

**SAR Peak: 1.37 W/kg**

<b>SAR 10g (W/Kg)</b>	6.10478
<b>SAR 1g (W/Kg)</b>	9.69519

<b>Z (mm)</b>	<b>0.00</b>	<b>4.00</b>	<b>9.00</b>	<b>14.00</b>	<b>19.00</b>	<b>24.00</b>	<b>29.00</b>
<b>SAR (W/Kg)</b>	<b>1.3713</b>	<b>0.9835</b>	<b>0.6484</b>	<b>0.4339</b>	<b>0.2906</b>	<b>0.1933</b>	<b>0.1261</b>



3D screen shot	Hot spot position
	

## MEASUREMENT 2

### BODY

Type: Validation measurement (Complete)

Date of measurement: 19/8/2016

Measurement duration: 11 minutes 47 seconds

### A. Experimental conditions.

<b><u>Area Scan</u></b>	<u>dx=12mm dy=12mm</u>
<b><u>ZoomScan</u></b>	<u>5x5x7, dx=8mm dy=8mm dz=5mm, Complete</u>
<b><u>Phantom</u></b>	<u>Validation plane</u>
<b><u>Device Position</u></b>	<u>Dipole</u>
<b><u>Band</u></b>	<u>CW835</u>
<b><u>Channels</u></b>	<u>Middle</u>
<b><u>Signal</u></b>	<u>CW (Crest factor: 1.0)</u>

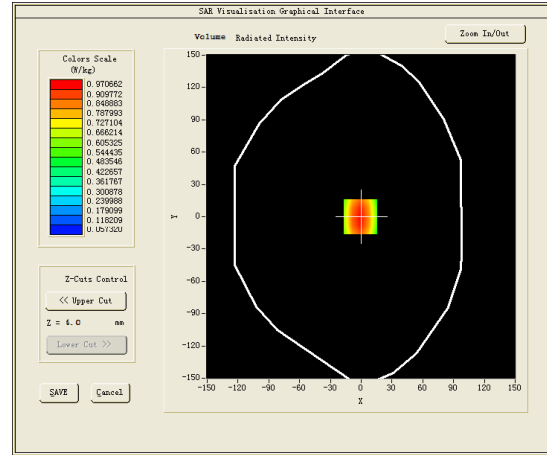
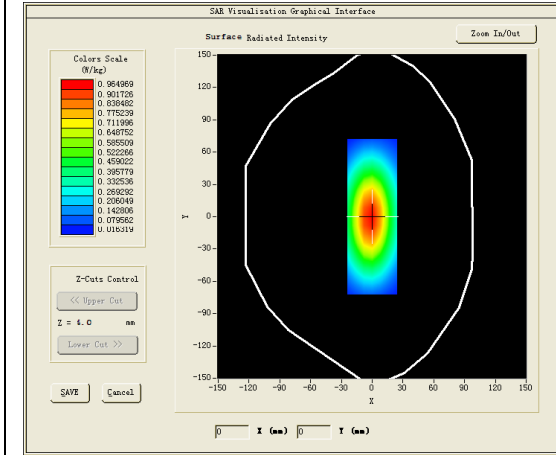
### B. SAR Measurement Results

Middle Band SAR (Channel -1):

<b>Frequency (MHz)</b>	835.000000
<b>Relative permittivity (real part)</b>	53.439098
<b>Relative permittivity (imaginary part)</b>	21.715401
<b>Conductivity (S/m)</b>	1.007353
<b>Variation (%)</b>	0.760000

### SURFACE SAR

### VOLUME SAR

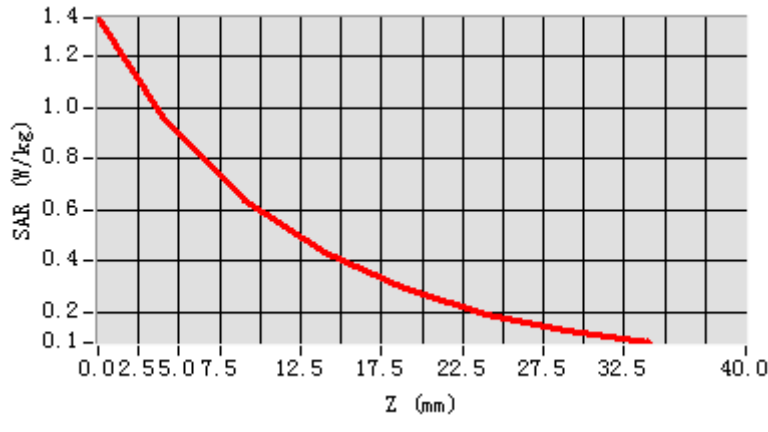


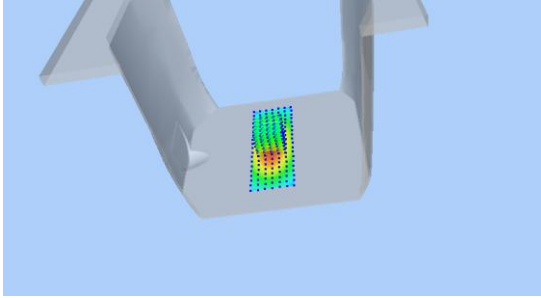

**Maximum location: X=-1.00, Y=0.00**

**SAR Peak: 1.47 W/kg**

<b>SAR 10g (W/Kg)</b>	6.61623
<b>SAR 1g (W/Kg)</b>	10.49474

<b>Z (mm)</b>	<b>0.00</b>	<b>4.00</b>	<b>9.00</b>	<b>14.00</b>	<b>19.00</b>	<b>24.00</b>	<b>29.00</b>
<b>SAR (W/Kg)</b>	<b>1.3515</b>	<b>0.9707</b>	<b>0.6410</b>	<b>0.4295</b>	<b>0.2884</b>	<b>0.1920</b>	<b>0.1262</b>



3D screen shot	Hot spot position
	

## MEASUREMENT 3

### BODY

Type: Validation measurement (Complete)

Date of measurement: 27/8/2016

Measurement duration: 11 minutes 59 seconds

### A. Experimental conditions.

<b><u>Area Scan</u></b>	<u>dx=12mm dy=12mm</u>
<b><u>ZoomScan</u></b>	<u>5x5x7,dx=8mm dy=8mm dz=5mm,Complete</u>
<b><u>Phantom</u></b>	<u>Validation plane</u>
<b><u>Device Position</u></b>	<u>Dipole</u>
<b><u>Band</u></b>	<u>CW1800</u>
<b><u>Channels</u></b>	<u>Middle</u>
<b><u>Signal</u></b>	<u>CW (Crest factor: 1.0)</u>

### B. SAR Measurement Results

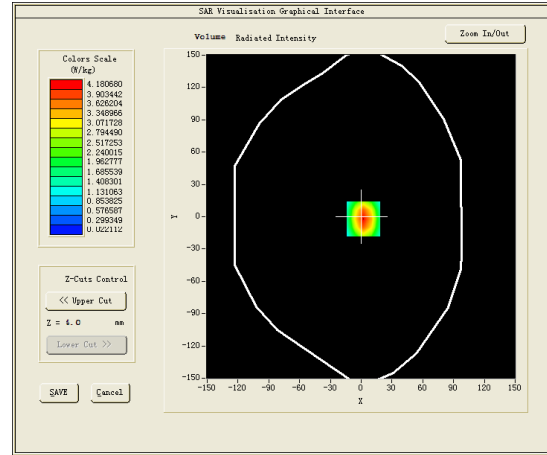
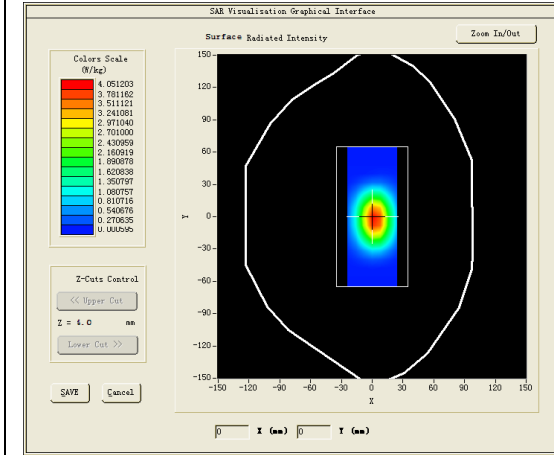
Middle Band SAR (Channel -1):

<b>Frequency (MHz)</b>	1800.000000
<b>Relative permittivity (real part)</b>	53.054001
<b>Relative permittivity (imaginary part)</b>	14.715600
<b>Conductivity (S/m)</b>	1.471560
<b>Variation (%)</b>	0.070000



### SURFACE SAR

### VOLUME SAR

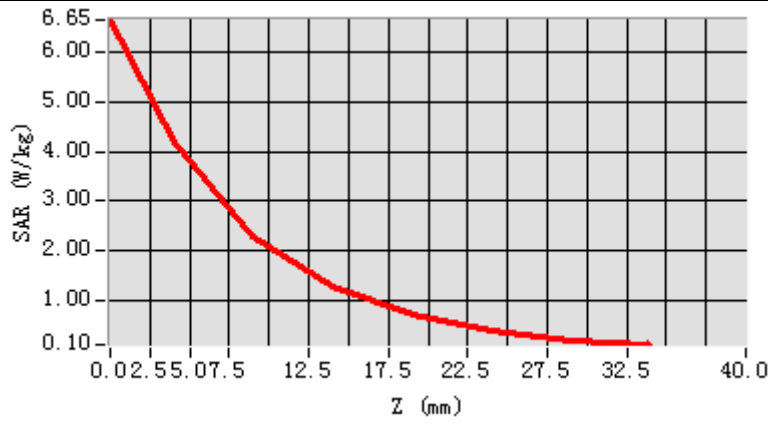


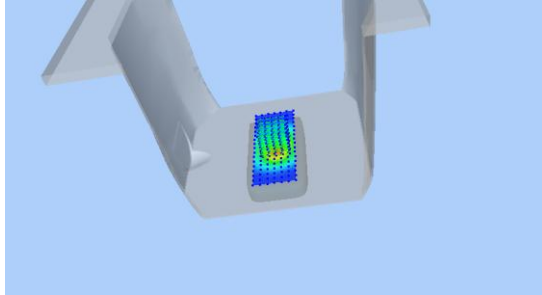
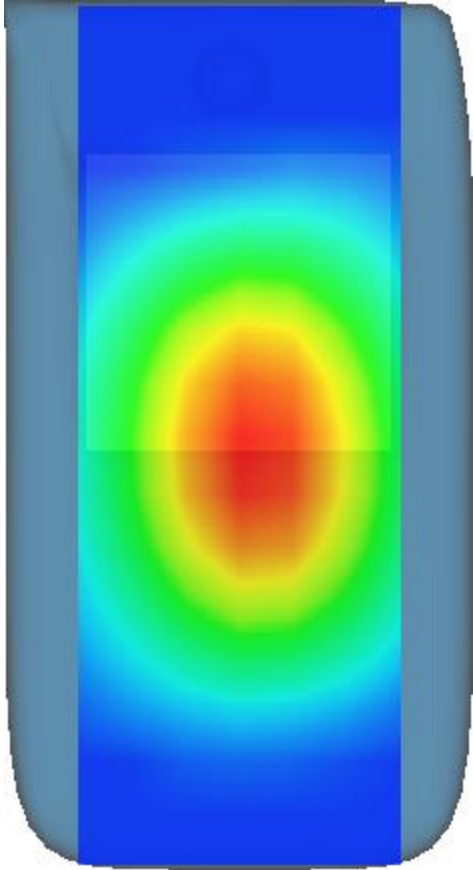
**Maximum location: X=2.00, Y=-2.00**

**SAR Peak: 6.88 W/kg**

<b>SAR 10g (W/Kg)</b>	21.32362
<b>SAR 1g (W/Kg)</b>	41.04705

<b>Z (mm)</b>	<b>0.00</b>	<b>4.00</b>	<b>9.00</b>	<b>14.00</b>	<b>19.00</b>	<b>24.00</b>	<b>29.00</b>
<b>SAR (W/Kg)</b>	<b>6.6543</b>	<b>4.1807</b>	<b>2.2751</b>	<b>1.2686</b>	<b>0.7073</b>	<b>0.3838</b>	<b>0.1975</b>



3D screen shot	Hot spot position
	

## MEASUREMENT 4

### HEAD

Type: Validation measurement (Complete)

Date of measurement: 27/8/2016

Measurement duration: 12 minutes 2 seconds

#### **A. Experimental conditions.**

<b><u>Area Scan</u></b>	<u>dx=12mm dy=12mm</u>
<b><u>ZoomScan</u></b>	<u>5x5x7,dx=8mm dy=8mm dz=5mm,Complete</u>
<b><u>Phantom</u></b>	<u>Validation plane</u>
<b><u>Device Position</u></b>	<u>Dipole</u>
<b><u>Band</u></b>	<u>CW1800</u>
<b><u>Channels</u></b>	<u>Middle</u>
<b><u>Signal</u></b>	<u>CW (Crest factor: 1.0)</u>

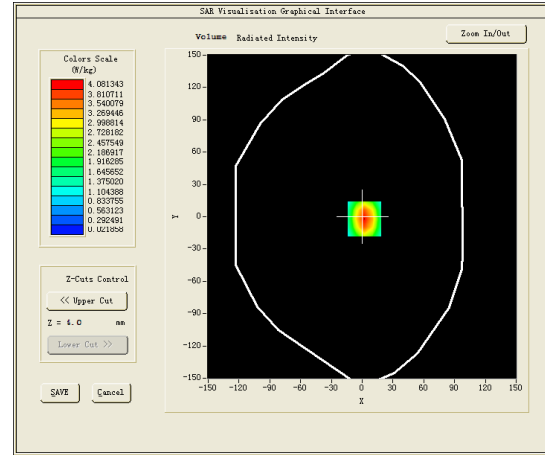
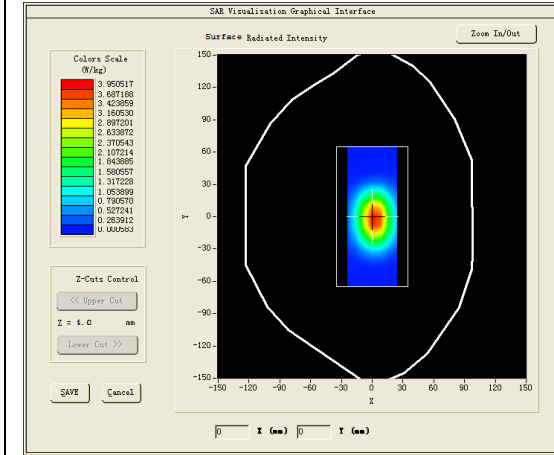
#### **B. SAR Measurement Results**

Middle Band SAR (Channel -1):

<b>Frequency (MHz)</b>	1800.000000
<b>Relative permittivity (real part)</b>	39.970501
<b>Relative permittivity (imaginary part)</b>	14.110600
<b>Conductivity (S/m)</b>	1.411060
<b>Variation (%)</b>	0.430000

### SURFACE SAR

### VOLUME SAR

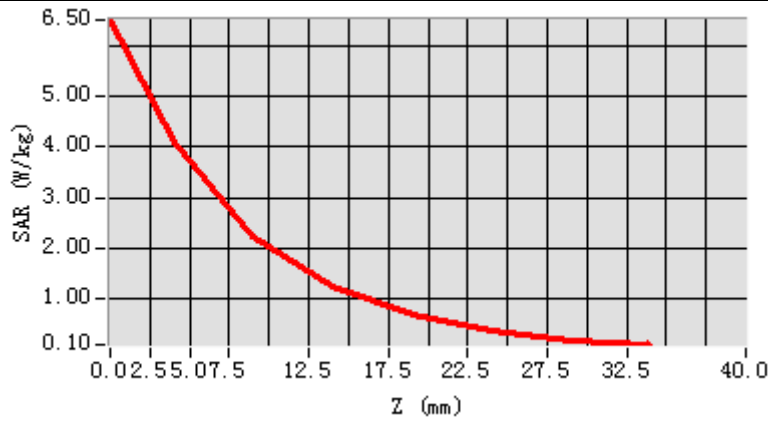


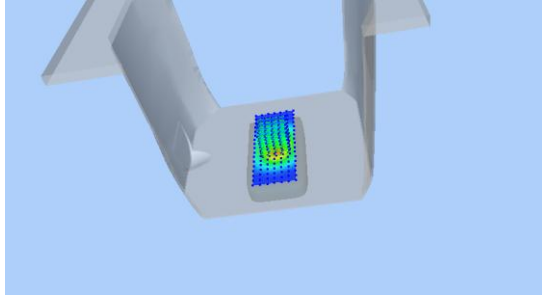
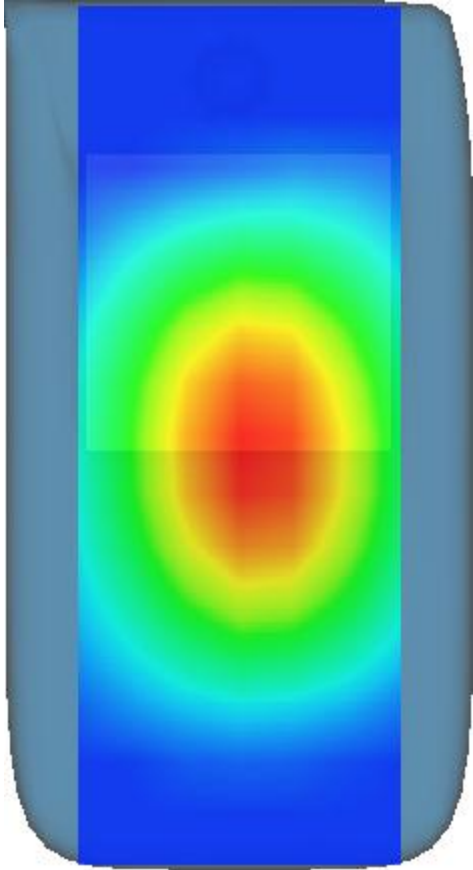
**Maximum location: X=2.00, Y=-2.00**

**SAR Peak: 6.44 W/kg**

<b>SAR 10g (W/Kg)</b>	20.07012
<b>SAR 1g (W/Kg)</b>	38.65479

<b>Z (mm)</b>	<b>0.00</b>	<b>4.00</b>	<b>9.00</b>	<b>14.00</b>	<b>19.00</b>	<b>24.00</b>	<b>29.00</b>
<b>SAR (W/Kg)</b>	<b>6.4983</b>	<b>4.0813</b>	<b>2.2222</b>	<b>1.2407</b>	<b>0.6952</b>	<b>0.3777</b>	<b>0.1952</b>



3D screen shot	Hot spot position
	

## MEASUREMENT 5

### BODY

Type: Validation measurement (Complete)

Date of measurement: 24/8/2016

Measurement duration: 11 minutes 20 seconds

### **A. Experimental conditions.**

<b><u>Area Scan</u></b>	<u>dx=12mm dy=12mm</u>
<b><u>ZoomScan</u></b>	<u>5x5x7,dx=8mm dy=8mm dz=5mm,Complete</u>
<b><u>Phantom</u></b>	<u>Validation plane</u>
<b><u>Device Position</u></b>	<u>Dipole</u>
<b><u>Band</u></b>	<u>CW1900</u>
<b><u>Channels</u></b>	<u>Middle</u>
<b><u>Signal</u></b>	<u>CW (Crest factor: 1.0)</u>

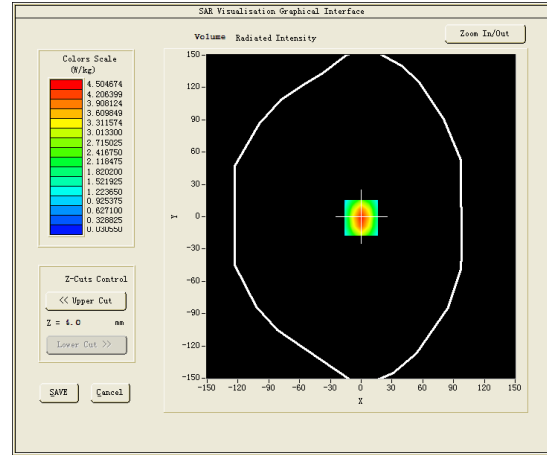
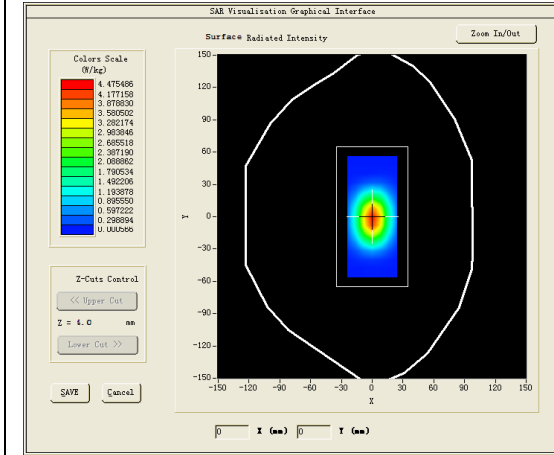
### **B. SAR Measurement Results**

Middle Band SAR (Channel -1):

<b>Frequency (MHz)</b>	1900.000000
<b>Relative permittivity (real part)</b>	52.238701
<b>Relative permittivity (imaginary part)</b>	14.662300
<b>Conductivity (S/m)</b>	1.547687
<b>Variation (%)</b>	-0.120000

### SURFACE SAR

### VOLUME SAR

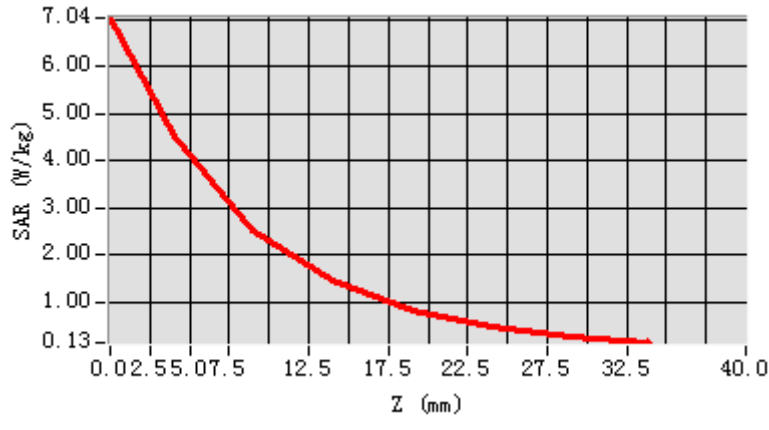


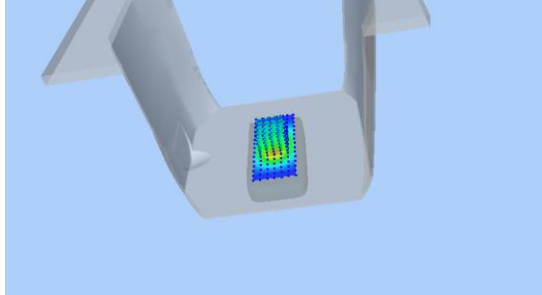
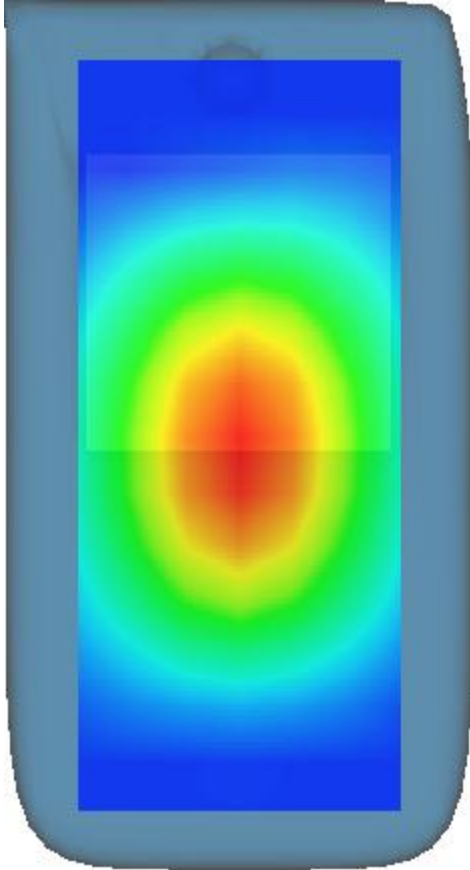
**Maximum location: X=0.00, Y=-1.00**

**SAR Peak: 7.00 W/kg**

<b>SAR 10g (W/Kg)</b>	22.16406
<b>SAR 1g (W/Kg)</b>	42.98718

Z (mm)	0.00	4.00	9.00	14.00	19.00	24.00	29.00
SAR (W/Kg)	7.0414	4.5047	2.5140	1.4403	0.8196	0.4627	0.2535



3D screen shot	Hot spot position
	



## MEASUREMENT 6

### HEAD

Type: Validation measurement (Complete)

Date of measurement: 24/8/2016

Measurement duration: 11 minutes 21 seconds

#### **A. Experimental conditions.**

<b><u>Area Scan</u></b>	<u>dx=12mm dy=12mm</u>
<b><u>ZoomScan</u></b>	<u>5x5x7,dx=8mm dy=8mm</u> <u>dz=5mm,Complete</u>
<b><u>Phantom</u></b>	<u>Validation plane</u>
<b><u>Device Position</u></b>	<u>Dipole</u>
<b><u>Band</u></b>	<u>CW1900</u>
<b><u>Channels</u></b>	<u>Middle</u>
<b><u>Signal</u></b>	<u>CW (Crest factor: 1.0)</u>

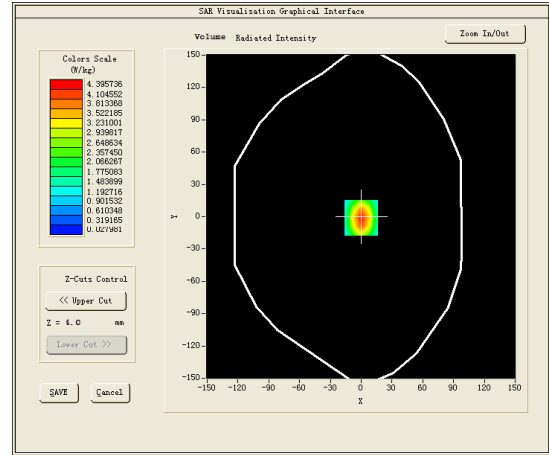
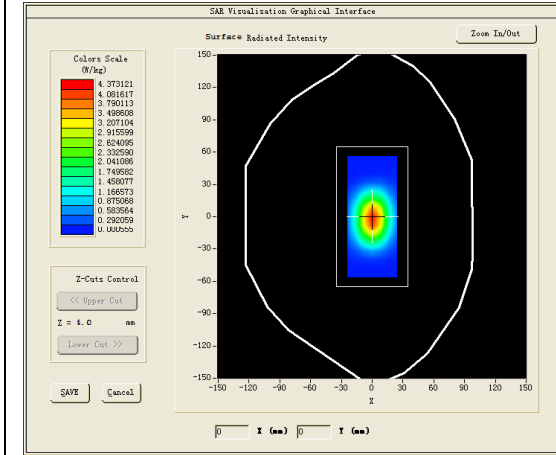
#### **B. SAR Measurement Results**

Middle Band SAR (Channel -1):

<b>Frequency (MHz)</b>	1900.000000
<b>Relative permittivity (real part)</b>	52.238701
<b>Relative permittivity (imaginary part)</b>	14.662300
<b>Conductivity (S/m)</b>	1.547687
<b>Variation (%)</b>	-0.060000

### SURFACE SAR

### VOLUME SAR

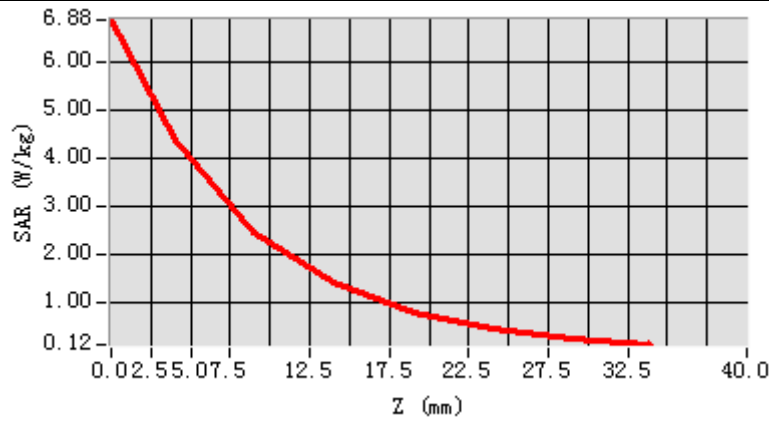


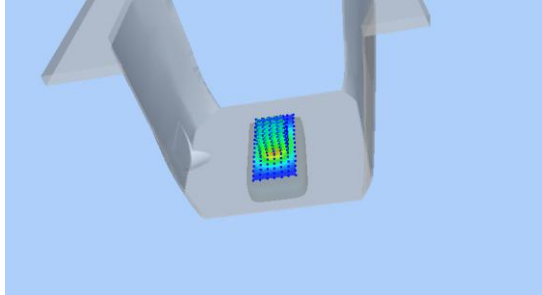
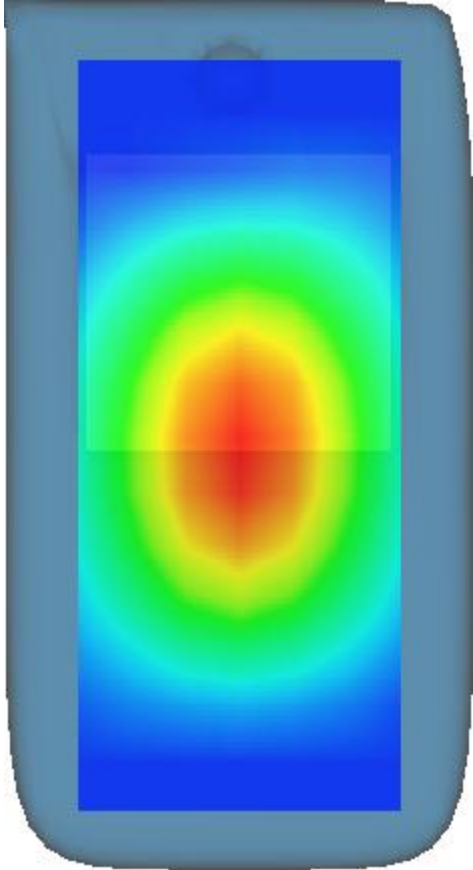
**Maximum location: X=0.00, Y=-1.00**

**SAR Peak: 6.84 W/kg**

<b>SAR 10g (W/Kg)</b>	21.46633
<b>SAR 1g (W/Kg)</b>	41.50148

<b>Z (mm)</b>	<b>0.00</b>	<b>4.00</b>	<b>9.00</b>	<b>14.00</b>	<b>19.00</b>	<b>24.00</b>	<b>29.00</b>
<b>SAR (W/Kg)</b>	<b>6.8761</b>	<b>4.3957</b>	<b>2.4510</b>	<b>1.4045</b>	<b>0.7983</b>	<b>0.4499</b>	<b>0.2451</b>



3D screen shot	Hot spot position
	

## MEASUREMENT 7

### BODY

Type: Validation measurement (Complete)

Date of measurement: 20/8/2016

Measurement duration: 10 minutes 15 seconds

### A. Experimental conditions.

<b><u>Area Scan</u></b>	<u>dx=12mm dy=12mm</u>
<b><u>ZoomScan</u></b>	<u>5x5x7,dx=8mm dy=8mm dz=5mm,Complete</u>
<b><u>Phantom</u></b>	<u>Validation plane</u>
<b><u>Device Position</u></b>	<u>Dipole</u>
<b><u>Band</u></b>	<u>CW2450</u>
<b><u>Channels</u></b>	<u>Middle</u>
<b><u>Signal</u></b>	<u>CW (Crest factor: 1.0)</u>

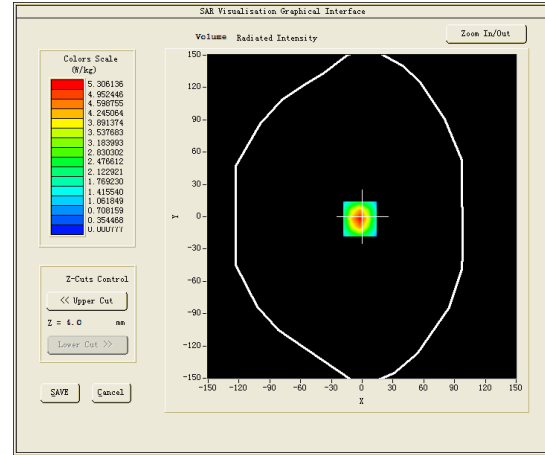
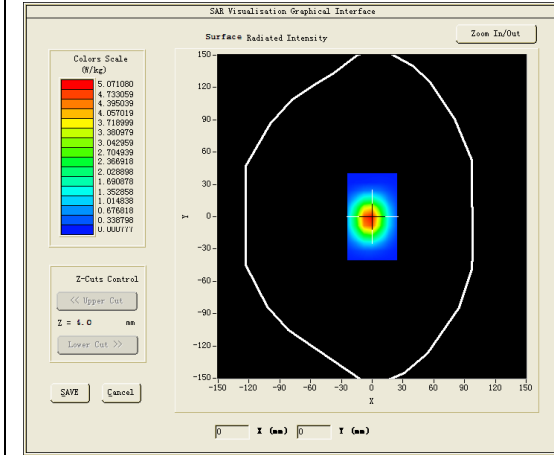
### B. SAR Measurement Results

Middle Band SAR (Channel -1):

<b>Frequency (MHz)</b>	2450.000000
<b>Relative permittivity (real part)</b>	54.220600
<b>Relative permittivity (imaginary part)</b>	14.968800
<b>Conductivity (S/m)</b>	2.037420
<b>Variation (%)</b>	0.050000

### SURFACE SAR

### VOLUME SAR

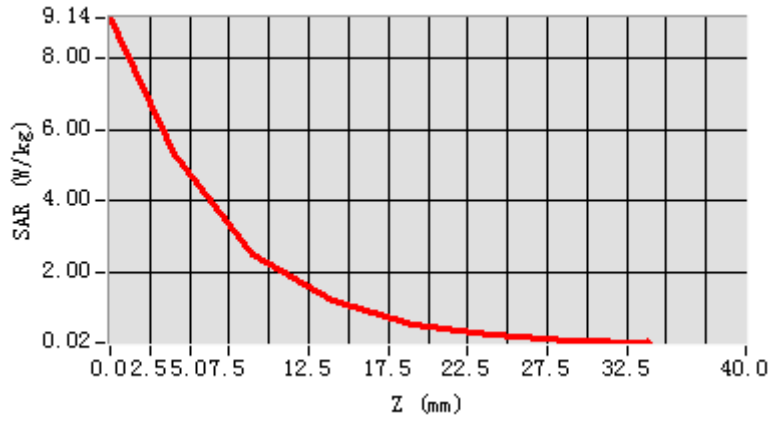


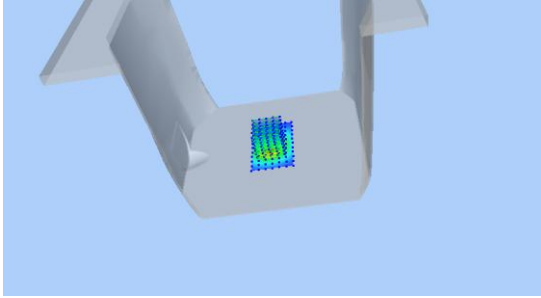
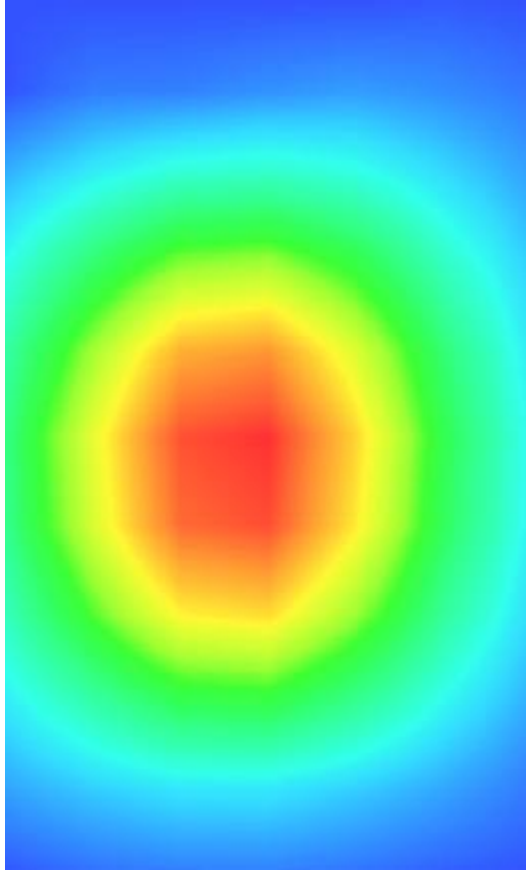
**Maximum location: X=-2.00, Y=-2.00**

**SAR Peak: 10.27 W/kg**

<b>SAR 10g (W/Kg)</b>	25.83320
<b>SAR 1g (W/Kg)</b>	57.34640

<b>Z (mm)</b>	<b>0.00</b>	<b>4.00</b>	<b>9.00</b>	<b>14.00</b>	<b>19.00</b>	<b>24.00</b>	<b>29.00</b>
<b>SAR (W/Kg)</b>	<b>9.1411</b>	<b>5.3061</b>	<b>2.4999</b>	<b>1.1841</b>	<b>0.5409</b>	<b>0.2294</b>	<b>0.0858</b>



3D screen shot	Hot spot position
	

## MEASUREMENT 8

### HEAD

Type: Validation measurement (Complete)

Date of measurement: 20/8/2016

Measurement duration: 10 minutes 16 seconds

#### **A. Experimental conditions.**

<b><u>Area Scan</u></b>	<u>dx=12mm dy=12mm</u>
<b><u>ZoomScan</u></b>	<u>5x5x7,dx=8mm dy=8mm dz=5mm,Complete</u>
<b><u>Phantom</u></b>	<u>Validation plane</u>
<b><u>Device Position</u></b>	<u>Dipole</u>
<b><u>Band</u></b>	<u>CW2450</u>
<b><u>Channels</u></b>	<u>Middle</u>
<b><u>Signal</u></b>	<u>CW (Crest factor: 1.0)</u>

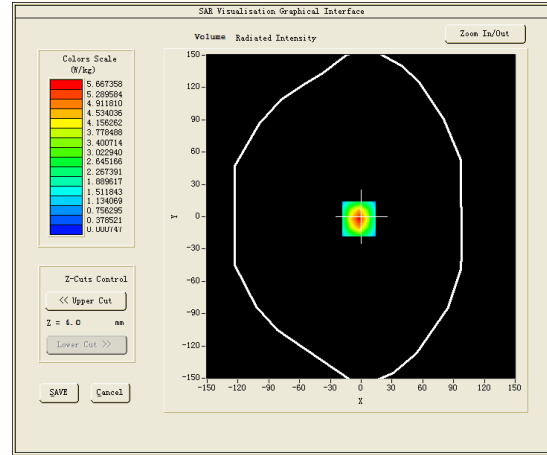
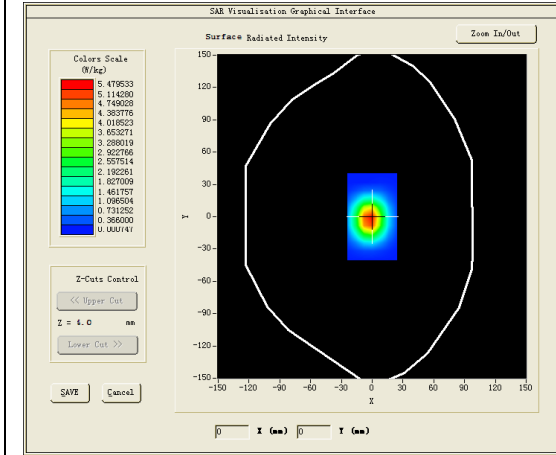
#### **B. SAR Measurement Results**

Middle Band SAR (Channel -1):

<b>Frequency (MHz)</b>	2450.000000
<b>Relative permittivity (real part)</b>	39.274300
<b>Relative permittivity (imaginary part)</b>	13.209200
<b>Conductivity (S/m)</b>	1.797919
<b>Variation (%)</b>	-0.070000

### SURFACE SAR

### VOLUME SAR



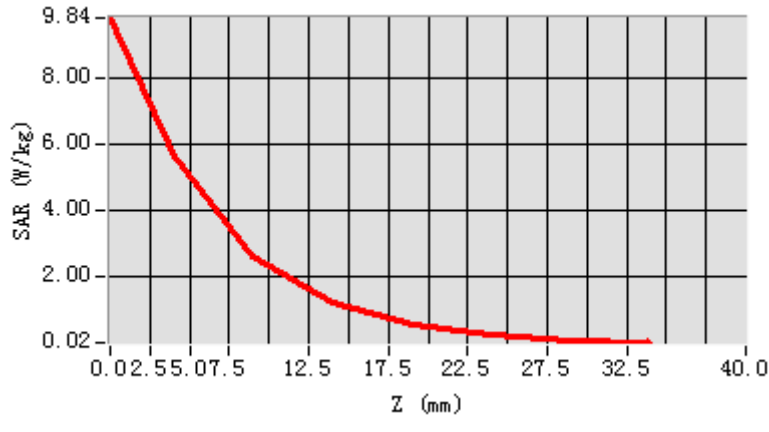
**Maximum location: X=-2.00, Y=-2.00**

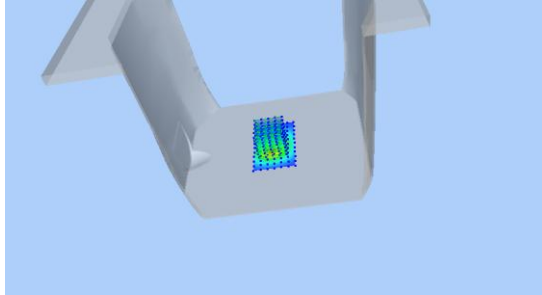
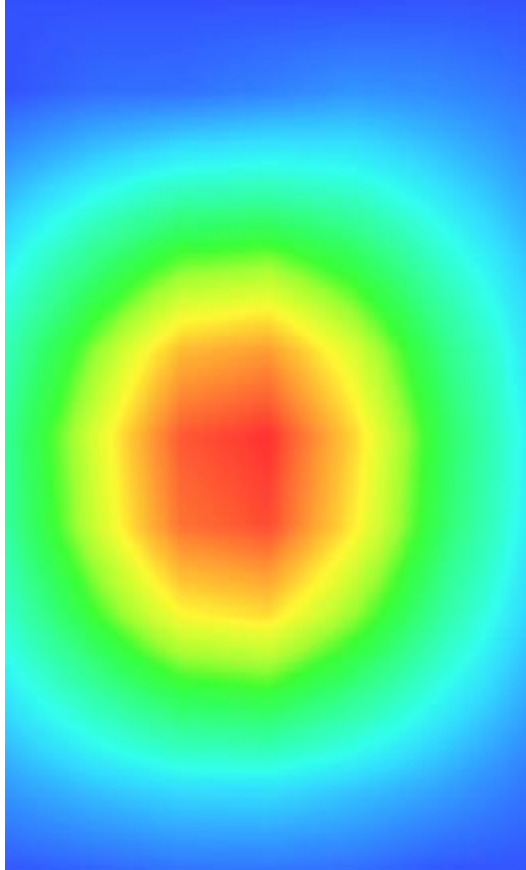
**SAR Peak: 9.73 W/kg**

<b>SAR 10g (W/Kg)</b>	23.89643
<b>SAR 1g (W/Kg)</b>	53.19294



Z (mm)	0.00	4.00	9.00	14.00	19.00	24.00	29.00
SAR (W/Kg)	9.8410	5.6674	2.6392	1.2582	0.5748	0.2432	0.0901



3D screen shot	Hot spot position
	

## MEASUREMENT 9

### BODY

Type: Validation measurement (Complete)

Date of measurement: 29/8/2016

Measurement duration: 10 minutes 30 seconds

### A. Experimental conditions.

<b><u>Area Scan</u></b>	<u>dx=12mm dy=12mm</u>
<b><u>ZoomScan</u></b>	<u>5x5x7, dx=8mm dy=8mm dz=5mm, Complete</u>
<b><u>Phantom</u></b>	<u>Validation plane</u>
<b><u>Device Position</u></b>	<u>Dipole</u>
<b><u>Band</u></b>	<u>CW2600</u>
<b><u>Channels</u></b>	<u>Middle</u>
<b><u>Signal</u></b>	<u>CW (Crest factor: 1.0)</u>

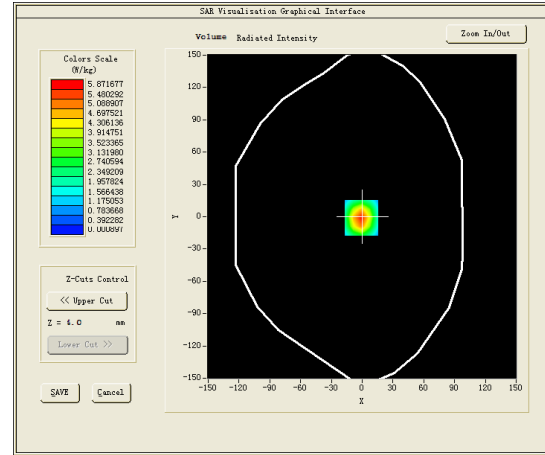
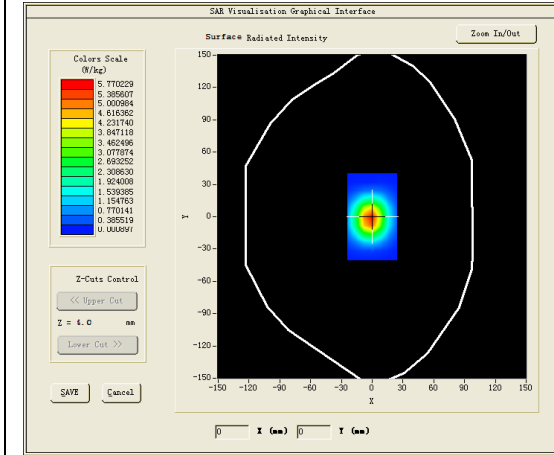
### B. SAR Measurement Results

Middle Band SAR (Channel -1):

<b>Frequency (MHz)</b>	2600.000000
<b>Relative permittivity (real part)</b>	52.593700
<b>Relative permittivity (imaginary part)</b>	15.205400
<b>Conductivity (S/m)</b>	2.196336
<b>Variation (%)</b>	-0.080000

### SURFACE SAR

### VOLUME SAR

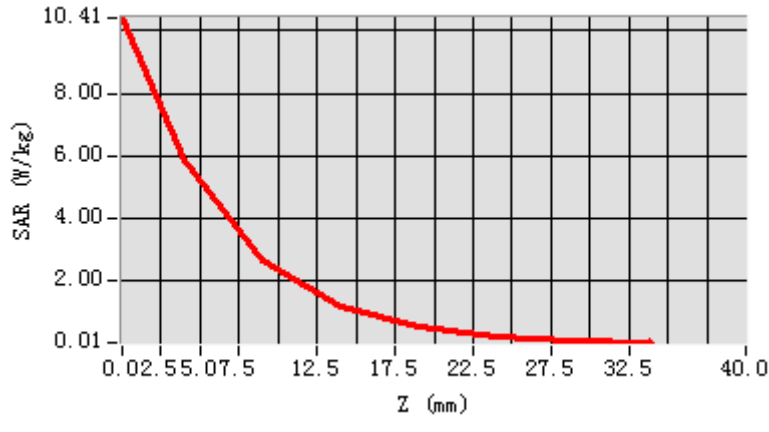


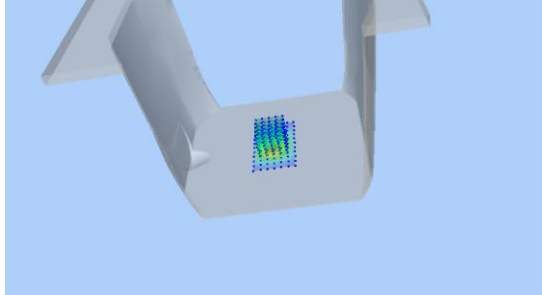
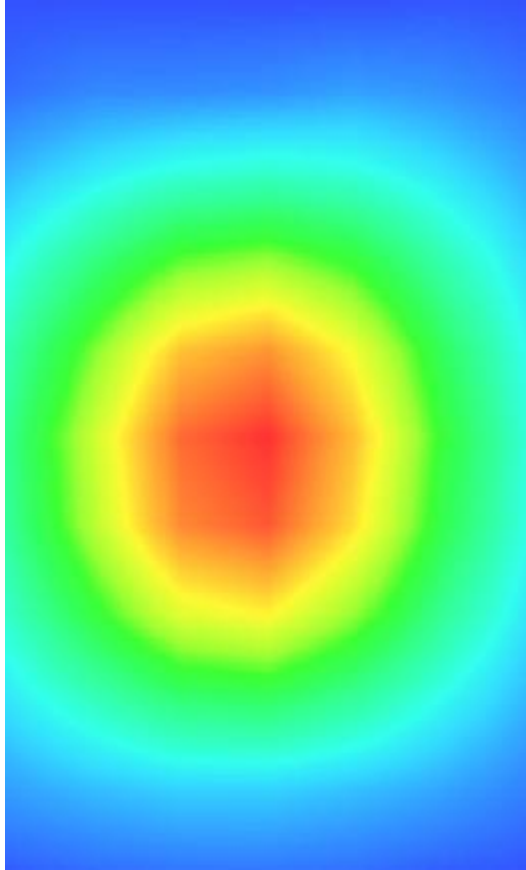
**Maximum location: X=-1.00, Y=-1.00**

**SAR Peak: 11.30 W/kg**

<b>SAR 10g (W/Kg)</b>	26.79928
<b>SAR 1g (W/Kg)</b>	60.96026

Z (mm)	0.00	4.00	9.00	14.00	19.00	24.00	29.00
SAR (W/Kg)	10.4107	5.8717	2.6201	1.1660	0.4942	0.1858	0.0567



3D screen shot	Hot spot position
	

## MEASUREMENT 10

### HEAD

Type: Validation measurement (Complete)

Date of measurement: 29/8/2016

Measurement duration: 10 minutes 28 seconds

#### **A. Experimental conditions.**

<b><u>Area Scan</u></b>	<u>dx=12mm dy=12mm</u>
<b><u>ZoomScan</u></b>	<u>5x5x7,dx=8mm dy=8mm</u> <u>dz=5mm,Complete</u>
<b><u>Phantom</u></b>	<u>Validation plane</u>
<b><u>Device Position</u></b>	<u>Dipole</u>
<b><u>Band</u></b>	<u>CW2600</u>
<b><u>Channels</u></b>	<u>Middle</u>
<b><u>Signal</u></b>	<u>CW (Crest factor: 1.0)</u>

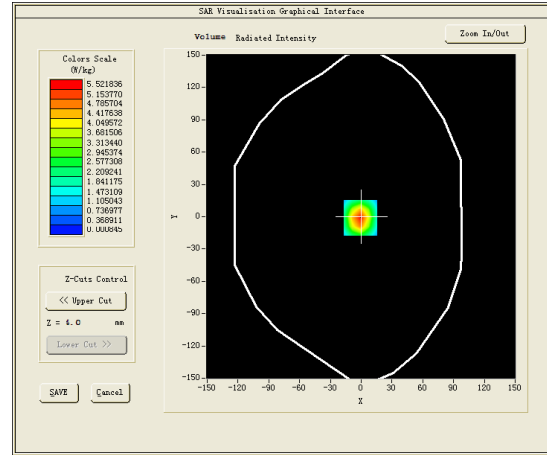
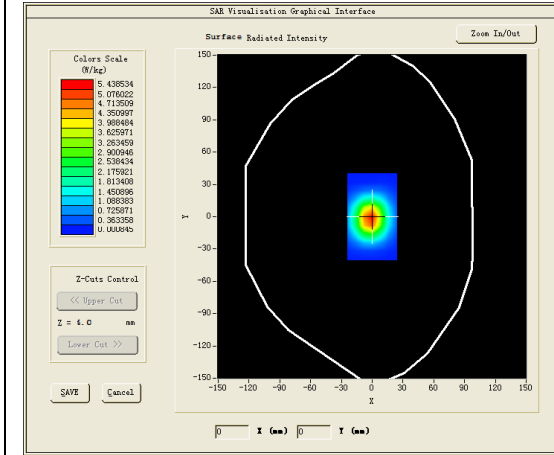
#### **B. SAR Measurement Results**

Middle Band SAR (Channel -1):

<b>Frequency (MHz)</b>	2600.000000
<b>Relative permittivity (real part)</b>	39.051800
<b>Relative permittivity (imaginary part)</b>	13.905600
<b>Conductivity (S/m)</b>	2.008587
<b>Variation (%)</b>	-0.120000

### SURFACE SAR

### VOLUME SAR

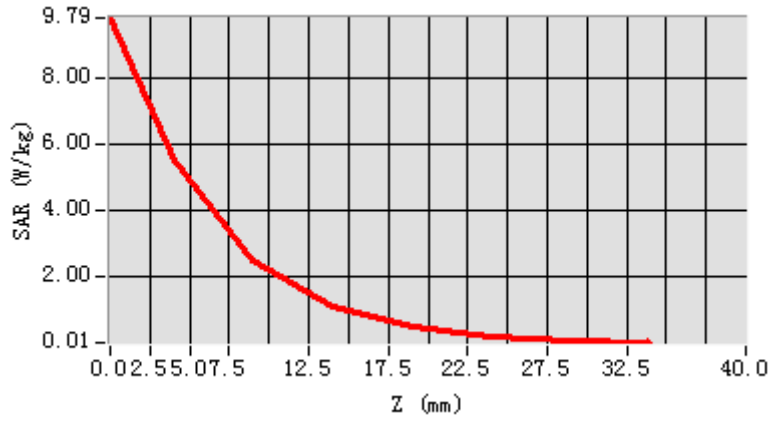


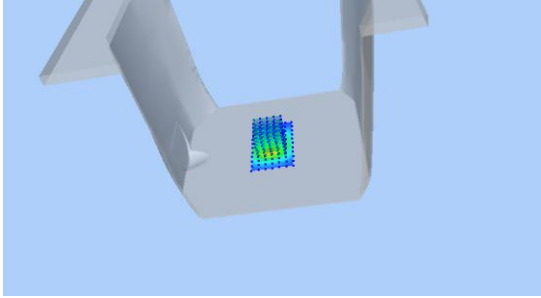
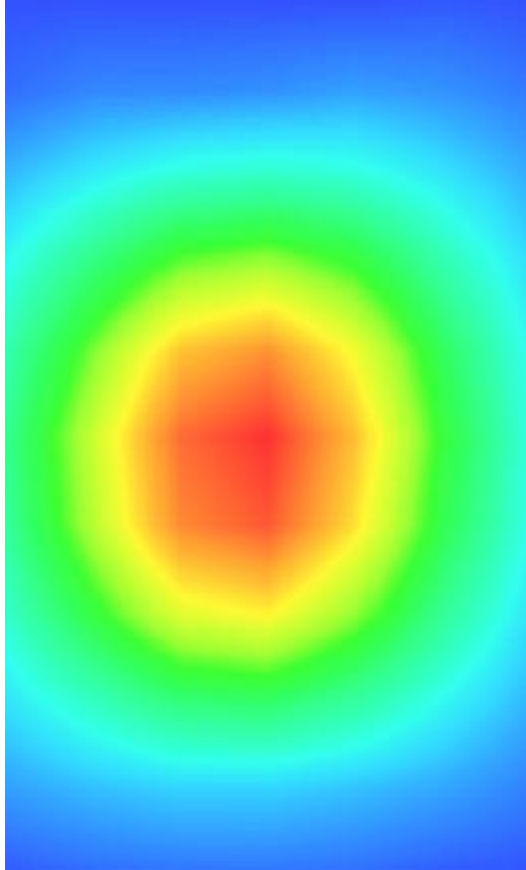
**Maximum location: X=-1.00, Y=-1.00**

**SAR Peak: 9.72 W/kg**

<b>SAR 10g (W/Kg)</b>	23.06832
<b>SAR 1g (W/Kg)</b>	52.61117

<b>Z (mm)</b>	<b>0.00</b>	<b>4.00</b>	<b>9.00</b>	<b>14.00</b>	<b>19.00</b>	<b>24.00</b>	<b>29.00</b>
<b>SAR (W/Kg)</b>	<b>9.7899</b>	<b>5.5218</b>	<b>2.4644</b>	<b>1.1017</b>	<b>0.4671</b>	<b>0.1769</b>	<b>0.0546</b>



3D screen shot	Hot spot position
	

## MEASUREMENT 11

### HEAD

Type: Validation measurement (Complete)

Date of measurement: 30/8/2016

Measurement duration: 13 minutes 45 seconds

#### **A. Experimental conditions.**

<b><u>Area Scan</u></b>	<u>dx=10mm dy=10mm</u>
<b><u>ZoomScan</u></b>	<u>8x8x7,dx=4mm dy=4mm dz=2mm,Complete</u>
<b><u>Phantom</u></b>	<u>Validation plane</u>
<b><u>Device Position</u></b>	<u>Dipole</u>
<b><u>Band</u></b>	<u>CW5200</u>
<b><u>Channels</u></b>	<u>Middle</u>
<b><u>Signal</u></b>	<u>CW (Crest factor: 1.0)</u>

#### **B. SAR Measurement Results**

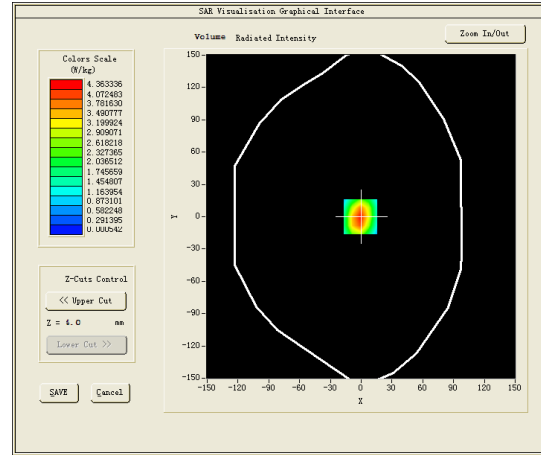
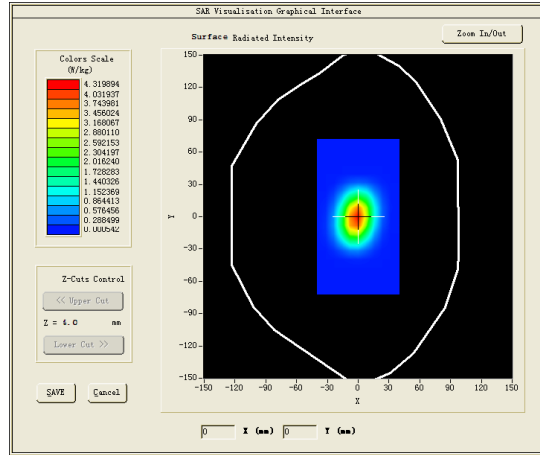
Middle Band SAR (Channel -1):

<b>Frequency (MHz)</b>	5200.000000
<b>Relative permittivity (real part)</b>	35.553182
<b>Relative permittivity (imaginary part)</b>	16.497414
<b>Conductivity (S/m)</b>	4.773841
<b>Variation (%)</b>	0.330000



### SURFACE SAR

### VOLUME SAR

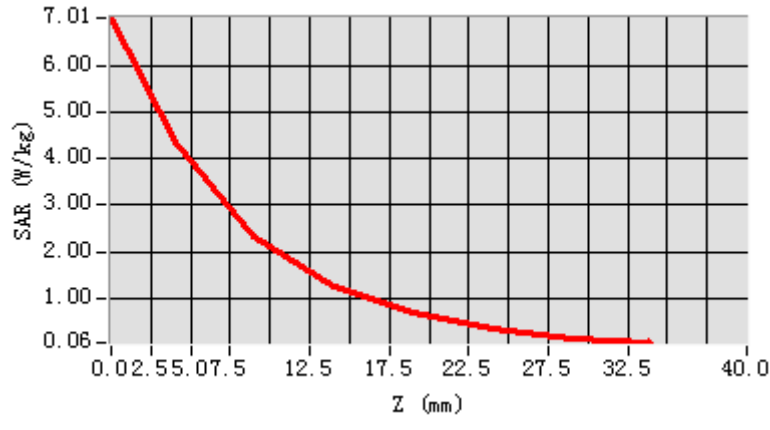


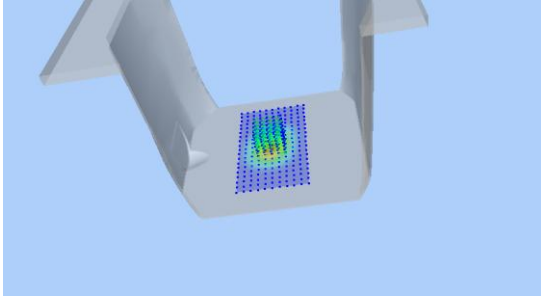
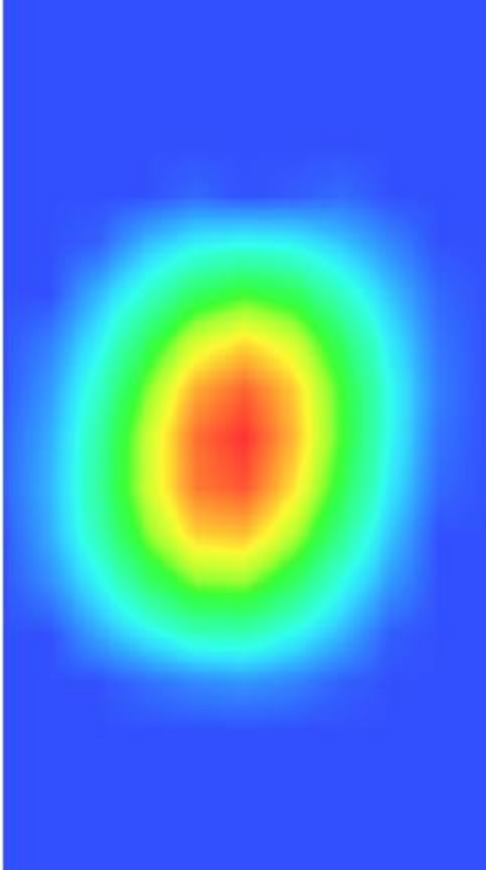
**Maximum location: X=-1.00, Y=0.00**

**SAR Peak: 15 W/kg**

<b>SAR 10g (W/Kg)</b>	23.57172
<b>SAR 1g (W/Kg)</b>	83.92412

<b>Z (mm)</b>	<b>0.00</b>	<b>4.00</b>	<b>9.00</b>	<b>14.00</b>	<b>19.00</b>	<b>24.00</b>	<b>29.00</b>
<b>SAR (W/Kg)</b>	<b>7.0084</b>	<b>4.3633</b>	<b>2.3305</b>	<b>1.2711</b>	<b>0.6827</b>	<b>0.3505</b>	<b>0.1629</b>



3D screen shot	Hot spot position
	

## MEASUREMENT 12

BODY

Type: Validation measurement (Complete)

Date of measurement: 30/8/2016

Measurement duration: 11 minutes 20 seconds

### **A. Experimental conditions.**

<b><u>Area Scan</u></b>	<u>dx=10mm dy=10mm</u>
<b><u>ZoomScan</u></b>	<u>8x8x7,dx=4mm dy=4mm dz=2mm,Complete</u>
<b><u>Phantom</u></b>	<u>Validation plane</u>
<b><u>Device Position</u></b>	<u>Dipole</u>
<b><u>Band</u></b>	<u>CW5200</u>
<b><u>Channels</u></b>	<u>Middle</u>
<b><u>Signal</u></b>	<u>CW (Crest factor: 1.0)</u>

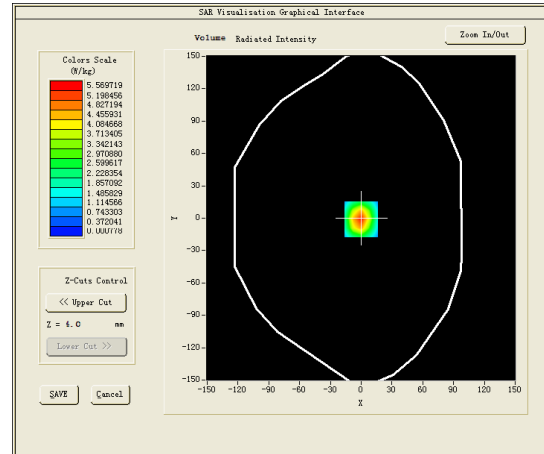
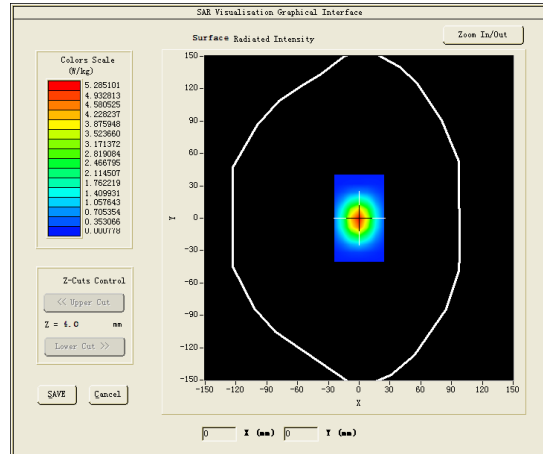
### **B. SAR Measurement Results**

Middle Band SAR (Channel -1):

<b>Frequency (MHz)</b>	5200.000000
<b>Relative permittivity (real part)</b>	50.422599
<b>Relative permittivity (imaginary part)</b>	18.202492
<b>Conductivity (S/m)</b>	5.26371
<b>Variation (%)</b>	2.020000

### SURFACE SAR

### VOLUME SAR

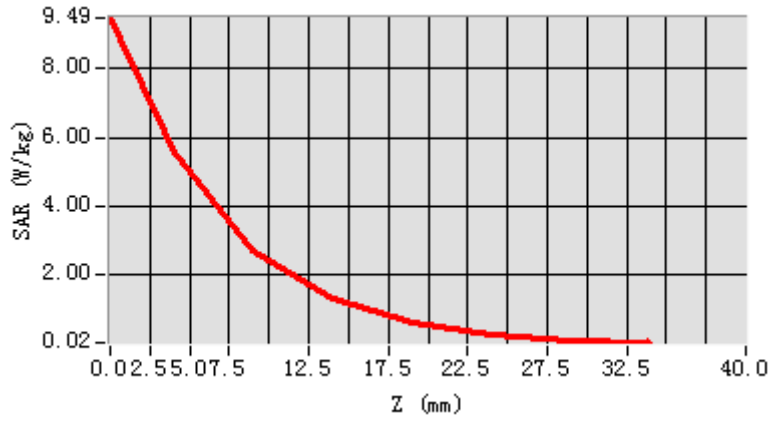


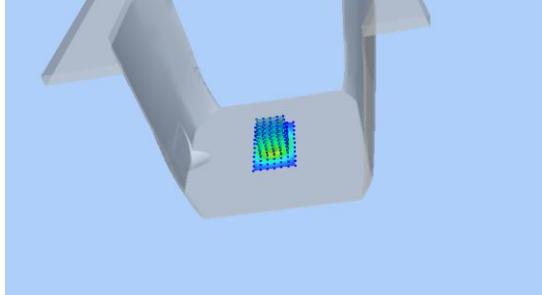
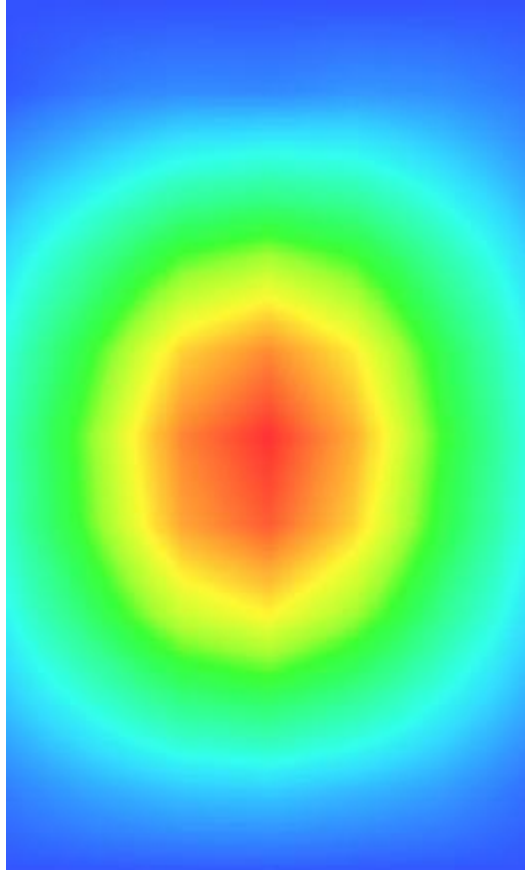
**Maximum location: X=0.00, Y=-1.00**

**SAR Peak: 10.20 W/kg**

<b>SAR 10g (W/Kg)</b>	22.37202
<b>SAR 1g (W/Kg)</b>	77.83191

Z (mm)	0.00	4.00	9.00	14.00	19.00	24.00	29.00
SAR (W/Kg)	9.4884	5.5697	2.6880	1.3102	0.6207	0.2724	0.0955



3D screen shot	Hot spot position
	

## MEASUREMENT 13

HEAD

Type: Validation measurement (Complete)

Date of measurement: 30/8/2016

Measurement duration: 10 minutes 39 seconds

### **A. Experimental conditions.**

<b><u>Area Scan</u></b>	<u>dx=10mm dy=10mm</u>
<b><u>ZoomScan</u></b>	<u>8x8x7,dx=4mm dy=4mm</u> <u>dz=2mm,Complete</u>
<b><u>Phantom</u></b>	<u>Validation plane</u>
<b><u>Device Position</u></b>	<u>Dipole</u>
<b><u>Band</u></b>	<u>CW5800</u>
<b><u>Channels</u></b>	<u>Middle</u>
<b><u>Signal</u></b>	<u>CW (Crest factor: 1.0)</u>

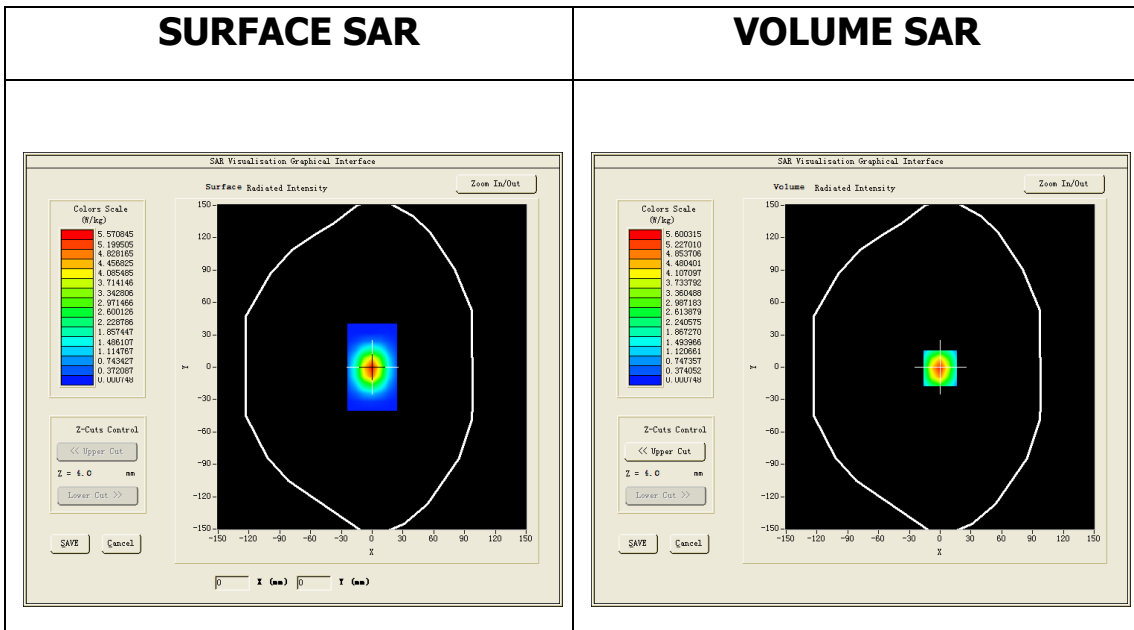
### **B. SAR Measurement Results**

Middle Band SAR (Channel -1):

<b>Frequency (MHz)</b>	5800.000000
<b>Relative permittivity (real part)</b>	34.225599
<b>Relative permittivity (imaginary part)</b>	16.160852
<b>Conductivity (S/m)</b>	5.211844
<b>Variation (%)</b>	0.310000

### SURFACE SAR

### VOLUME SAR

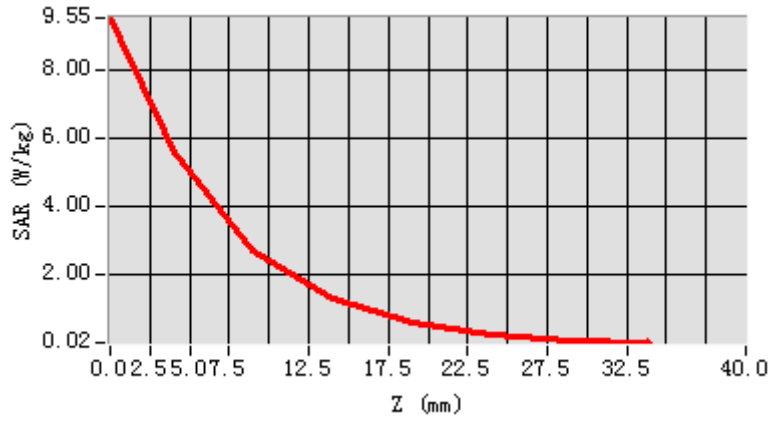


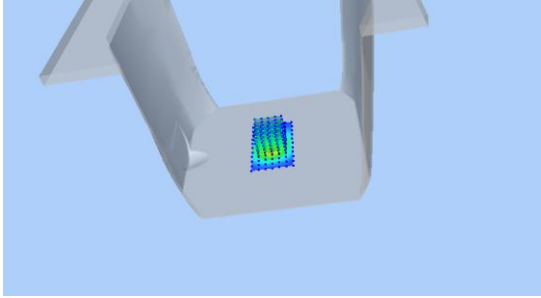
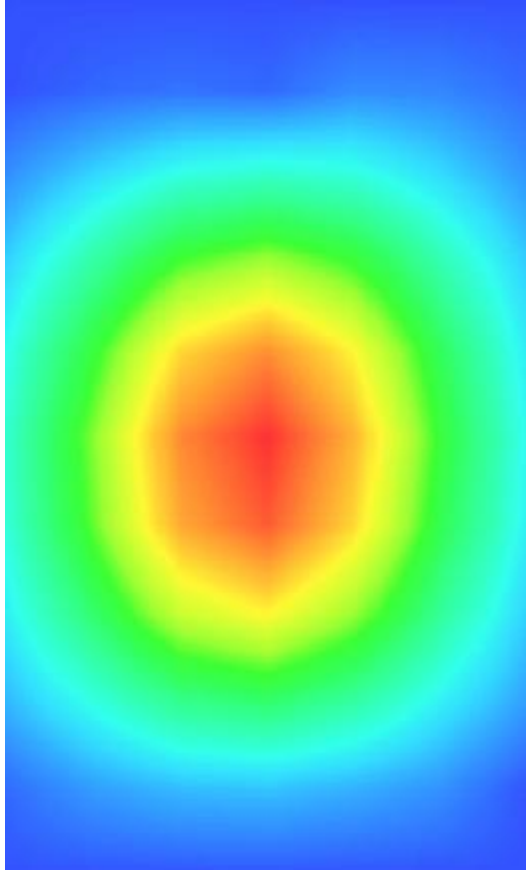
**Maximum location: X=0.00, Y=-1.00**

**SAR Peak: 9.48 W/kg**

<b>SAR 10g (W/Kg)</b>	23.57353
<b>SAR 1g (W/Kg)</b>	83.92489

<b>Z (mm)</b>	<b>0.00</b>	<b>4.00</b>	<b>9.00</b>	<b>14.00</b>	<b>19.00</b>	<b>24.00</b>	<b>29.00</b>
<b>SAR (W/Kg)</b>	<b>9.5519</b>	<b>5.6003</b>	<b>2.6971</b>	<b>1.3148</b>	<b>0.6202</b>	<b>0.2707</b>	<b>0.0931</b>



3D screen shot	Hot spot position
	



## MEASUREMENT 14

BODY

Type: Validation measurement (Complete)

Date of measurement: 30/8/2016

Measurement duration: 11 minutes 52 seconds

### **A. Experimental conditions.**

<b><u>Area Scan</u></b>	<u>dx=10mm dy=10mm</u>
<b><u>ZoomScan</u></b>	<u>8x8x7,dx=4mm dy=4mm dz=2mm,Complete</u>
<b><u>Phantom</u></b>	<u>Validation plane</u>
<b><u>Device Position</u></b>	<u>Dipole</u>
<b><u>Band</u></b>	<u>CW5800</u>
<b><u>Channels</u></b>	<u>Middle</u>
<b><u>Signal</u></b>	<u>CW (Crest factor: 1.0)</u>

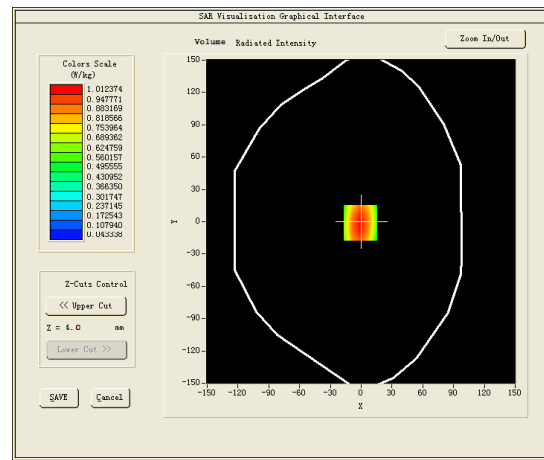
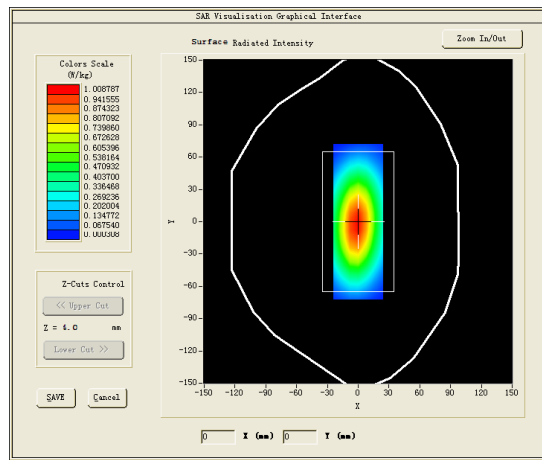
### **B. SAR Measurement Results**

Middle Band SAR (Channel -1):

<b>Frequency (MHz)</b>	5800.000000
<b>Relative permittivity (real part)</b>	48.090699
<b>Relative permittivity (imaginary part)</b>	19.043921
<b>Conductivity (S/m)</b>	6.14163
<b>Variation (%)</b>	-0.080000

### SURFACE SAR

### VOLUME SAR

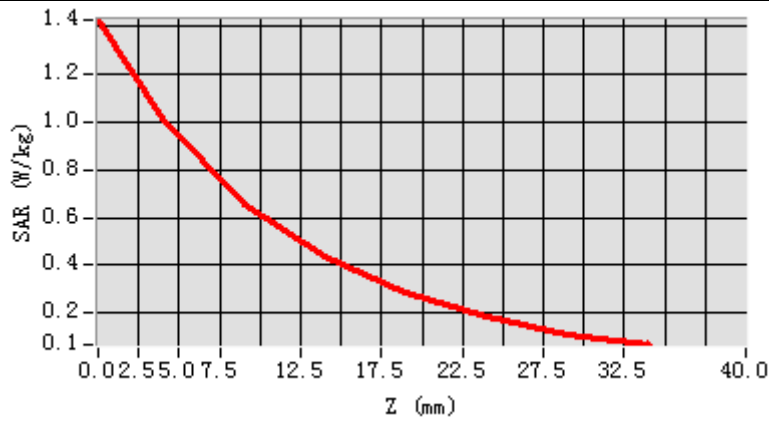


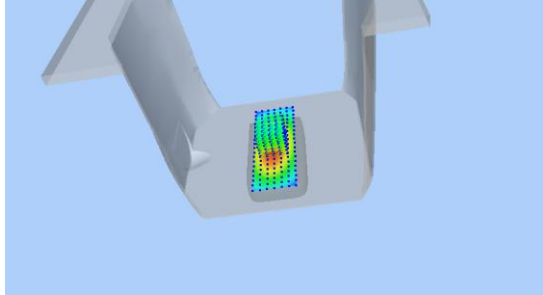
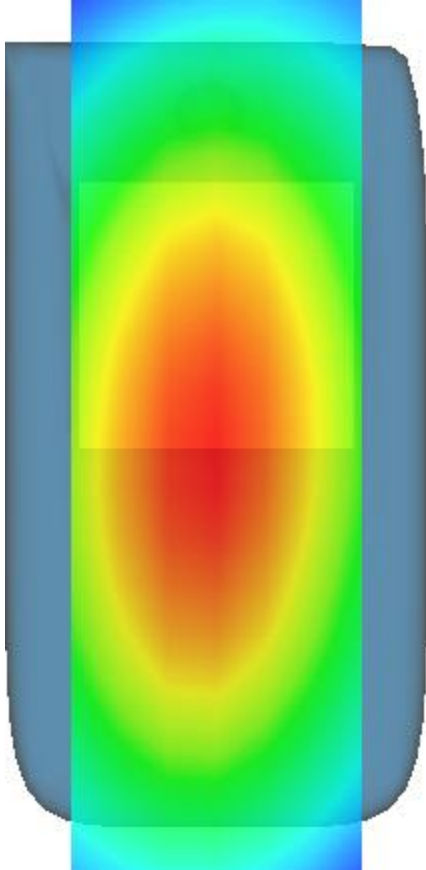
**Maximum location: X=-1.00, Y=-1.00**

**SAR Peak: 1.42 W/kg**

<b>SAR 10g (W/Kg)</b>	22.02128
<b>SAR 1g (W/Kg)</b>	77.66225

Z (mm)	0.00	4.00	9.00	14.00	19.00	24.00	29.00
SAR (W/Kg)	1.4287	1.0124	0.6572	0.4322	0.2826	0.1807	0.1105



3D screen shot	Hot spot position
	

## MEASUREMENT 15

HEAD

Type: Validation measurement (Complete)

Date of measurement: 30/8/2016

Measurement duration: 10 minutes 35 seconds

### **A. Experimental conditions.**

<b><u>Area Scan</u></b>	<u>dx=10mm dy=10mm</u>
<b><u>ZoomScan</u></b>	<u>8x8x7,dx=4mm dy=4mm dz=2mm,Complete</u>
<b><u>Phantom</u></b>	<u>Validation plane</u>
<b><u>Device Position</u></b>	<u>Dipole</u>
<b><u>Band</u></b>	<u>CW5300</u>
<b><u>Channels</u></b>	<u>Middle</u>
<b><u>Signal</u></b>	<u>CW (Crest factor: 1.0)</u>

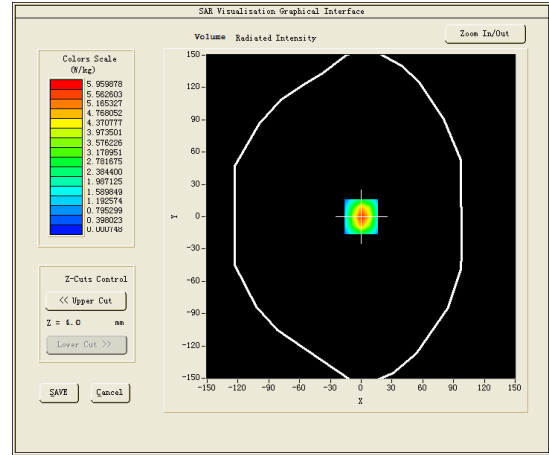
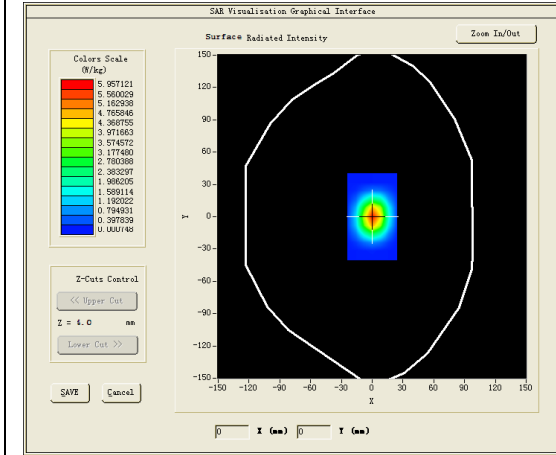
### **B. SAR Measurement Results**

Middle Band SAR (Channel -1):

<b>Frequency (MHz)</b>	5300.000000
<b>Relative permittivity (real part)</b>	35.343199
<b>Relative permittivity (imaginary part)</b>	16.591080
<b>Conductivity (S/m)</b>	4.881334
<b>Variation (%)</b>	-0.220000

### SURFACE SAR

### VOLUME SAR

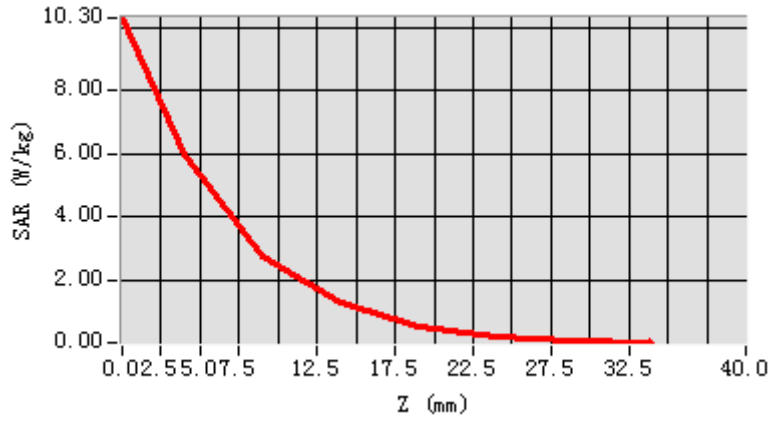


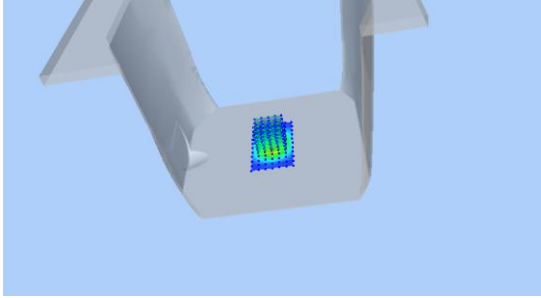
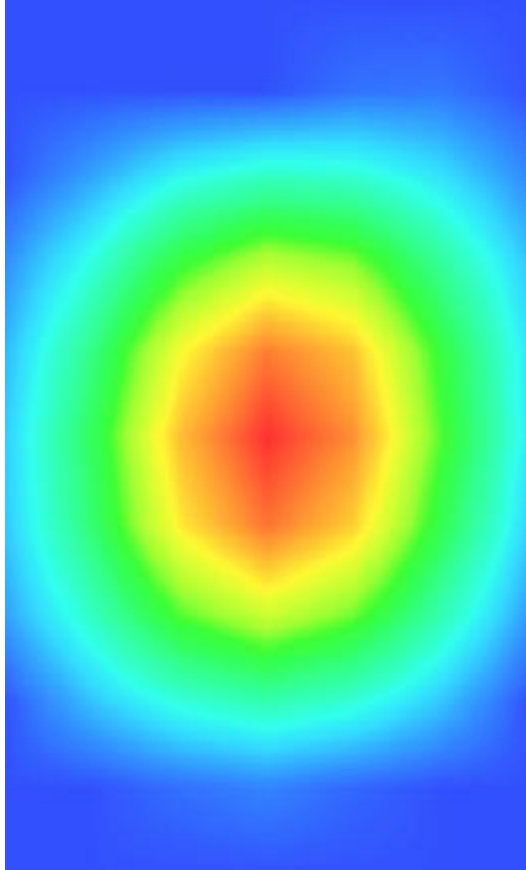
**Maximum location: X=0.00, Y=0.00**

**SAR Peak: 41.12 W/kg**

<b>SAR 10g (W/Kg)</b>	25.70497
<b>SAR 1g (W/Kg)</b>	89.512652

<b>Z (mm)</b>	<b>0.00</b>	<b>4.00</b>	<b>9.00</b>	<b>14.00</b>	<b>19.00</b>	<b>24.00</b>	<b>29.00</b>
<b>SAR (W/Kg)</b>	<b>10.301</b>	<b>5.9599</b>	<b>2.7639</b>	<b>1.2615</b>	<b>0.5204</b>	<b>0.1728</b>	<b>0.0386</b>
	<b>2</b>						



3D screen shot	Hot spot position
	

## MEASUREMENT 16

BODY

Type: Validation measurement (Complete)

Date of measurement: 30/8/2016

Measurement duration: 10 minutes 20 seconds

### **A. Experimental conditions.**

<b><u>Area Scan</u></b>	<u>dx=10mm dy=10mm</u>
<b><u>ZoomScan</u></b>	<u>8x8x7, dx=4mm dy=4mm dz=2mm, Complete</u>
<b><u>Phantom</u></b>	<u>Validation plane</u>
<b><u>Device Position</u></b>	<u>Dipole</u>
<b><u>Band</u></b>	<u>CW5300</u>
<b><u>Channels</u></b>	<u>Middle</u>
<b><u>Signal</u></b>	<u>CW (Crest factor: 1.0)</u>

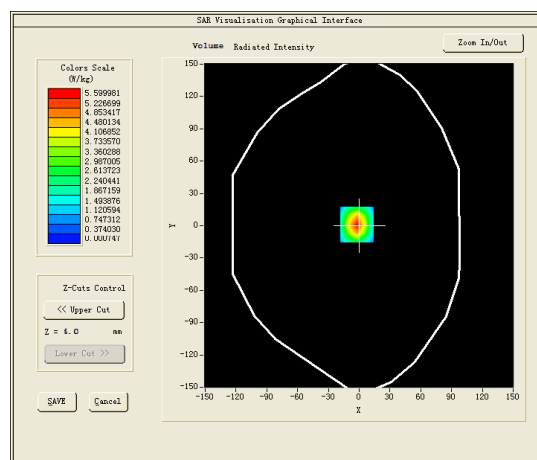
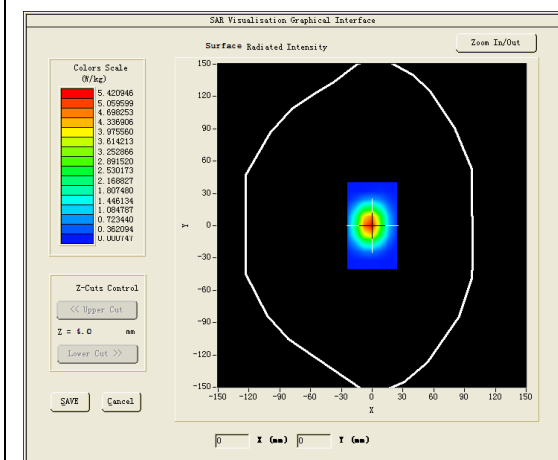
### **B. SAR Measurement Results**

Middle Band SAR (Channel -1):

<b>Frequency (MHz)</b>	5300.000000
<b>Relative permittivity (real part)</b>	47.944300
<b>Relative permittivity (imaginary part)</b>	18.167566
<b>Conductivity (S/m)</b>	5.353919
<b>Variation (%)</b>	0.280000

### SURFACE SAR

### VOLUME SAR



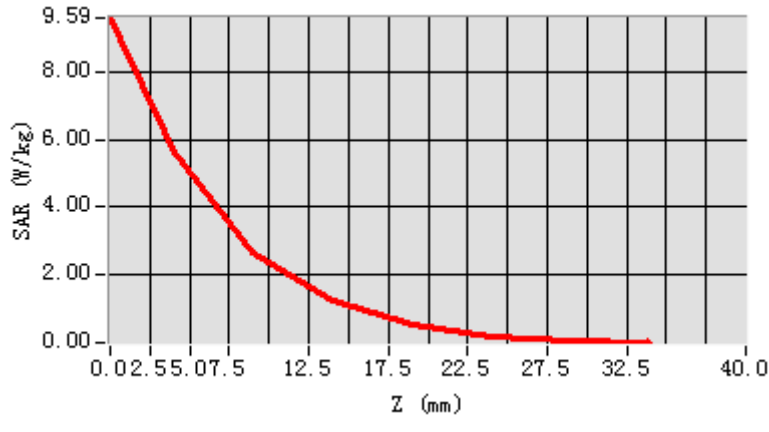
**Maximum location: X=-2.00, Y=1.00**

**SAR Peak: 40.47 W/kg**

<b>SAR 10g (W/Kg)</b>	22.521496
<b>SAR 1g (W/Kg)</b>	81.240974



Z (mm)	0.00	4.00	9.00	14.00	19.00	24.00	29.00
SAR (W/Kg)	9.5918	5.6000	2.6526	1.2395	0.5276	0.1905	0.0324



3D screen shot	Hot spot position
