

## FCC Test Report

**Application Purpose** : Original grant

**Applicant Name:** : INFINIX MOBILITY LIMITED

**FCC ID** : 2ADYY-X601-LTE

**Equipment Type** : Mobile phone

**Model Name** : X601-LTE

**Report Number** : FCC16083896A-5

**Standard(S)** : FCC Part 22H&24E&27 Rules

**Date Of Receipt** : August 19, 2016

**Date Of Issue** : September 27, 2016

**Test By** :   
\_\_\_\_\_  
(Daisy Qin)

**Reviewed By** :   
\_\_\_\_\_  
(Sol Qin)

**Authorized by** :   
\_\_\_\_\_  
(Michal Ling)

**Prepared by** : **QTC Certification & Testing Co., Ltd.**  
2nd Floor, B1 Building, Fengyeyuan Industrial Plant,, Liuxian  
2st. Road, Xin'an Street, Bao'an District,, Shenzhen, 518000  
**Registration Number: 588523**

**REPORT REVISE RECORD**

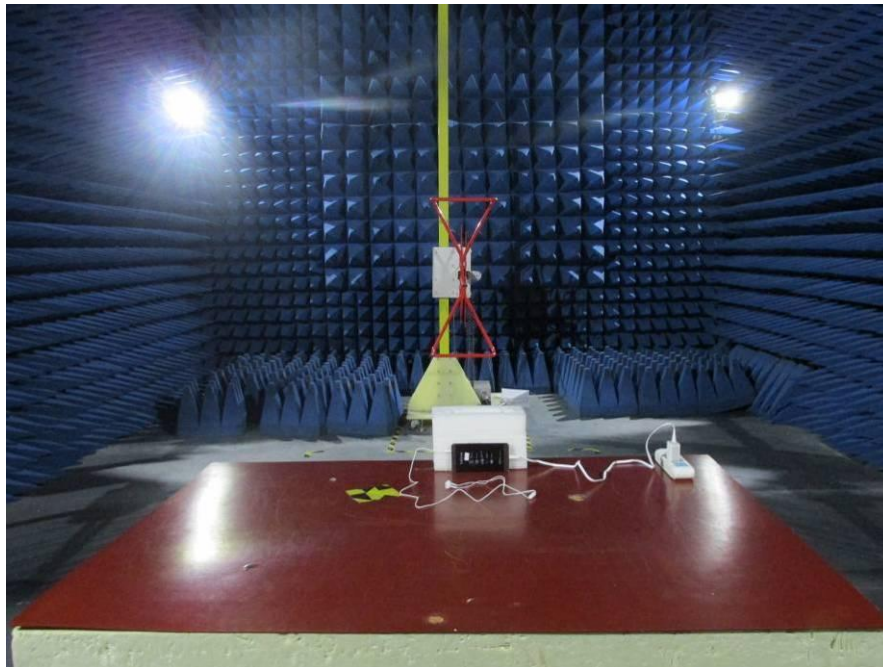
<b>Report Version</b>	<b>Revise Time</b>	<b>Issued Date</b>	<b>Valid Version</b>	<b>Notes</b>
V1.0	/	September 27, 2016	Valid	Original Report

## TABLE OF CONTENTS

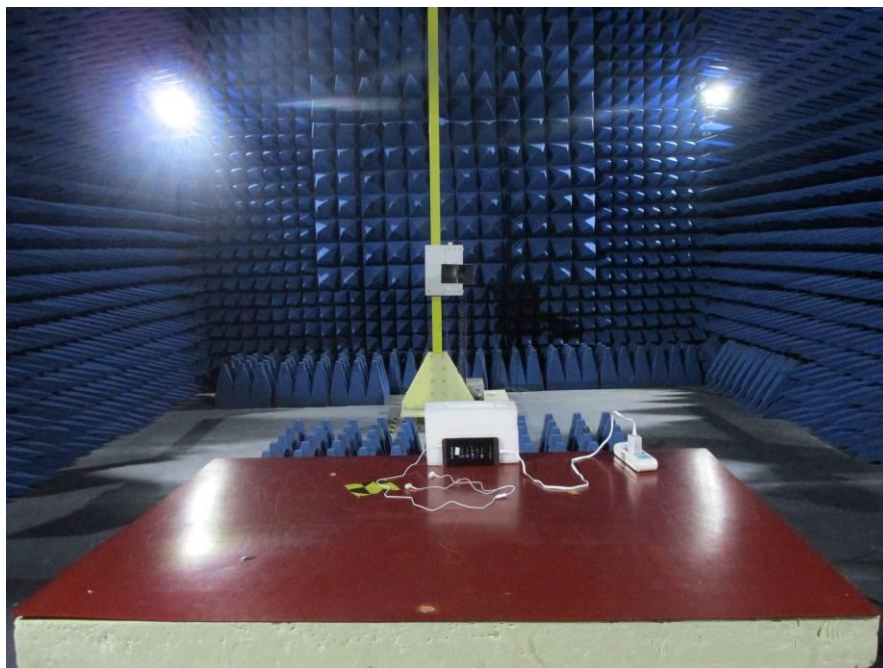
1	EUT TEST PHOTO .....	4
2	EUT PHOTO .....	6

# 1 EUT TEST PHOTO

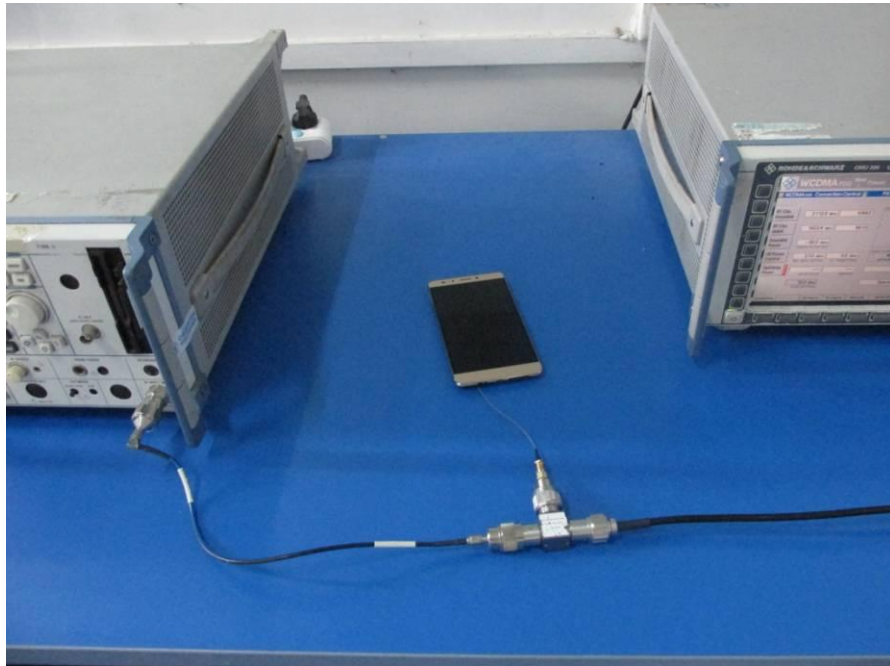
RADIATED EMISSION TEST



RADIATED EMISSION TEST



RF TEST



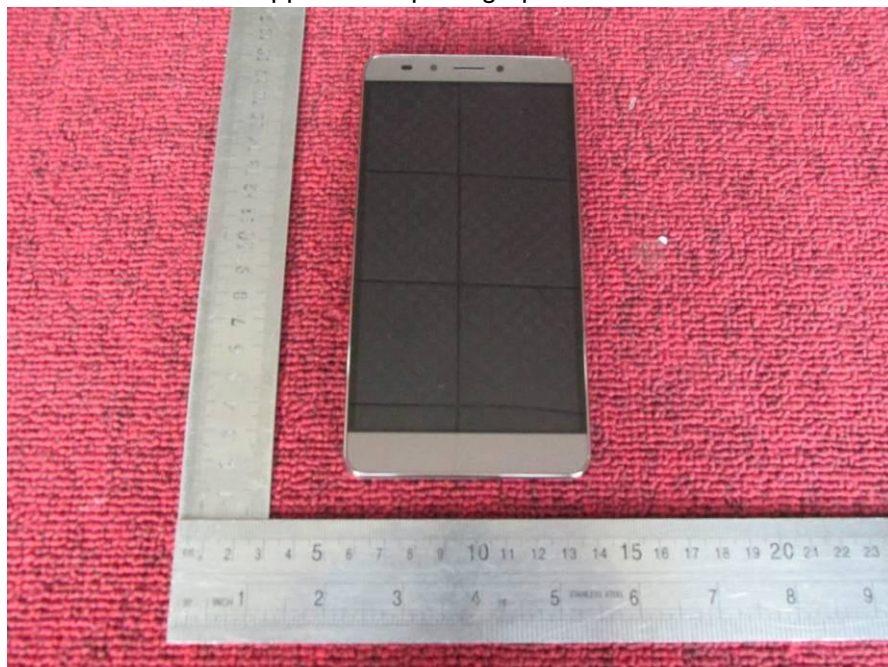


## 2 EUT PHOTO

Appearance photograph of EUT



Appearance photograph of EUT



Appearance photograph of EUT



Appearance photograph of EUT

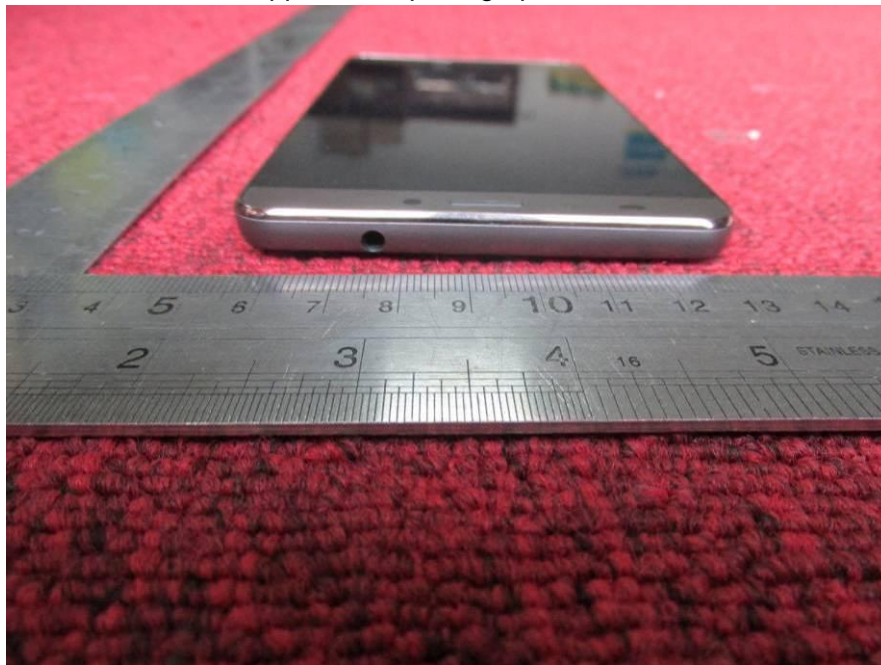




Appearance photograph of EUT



Appearance photograph of EUT

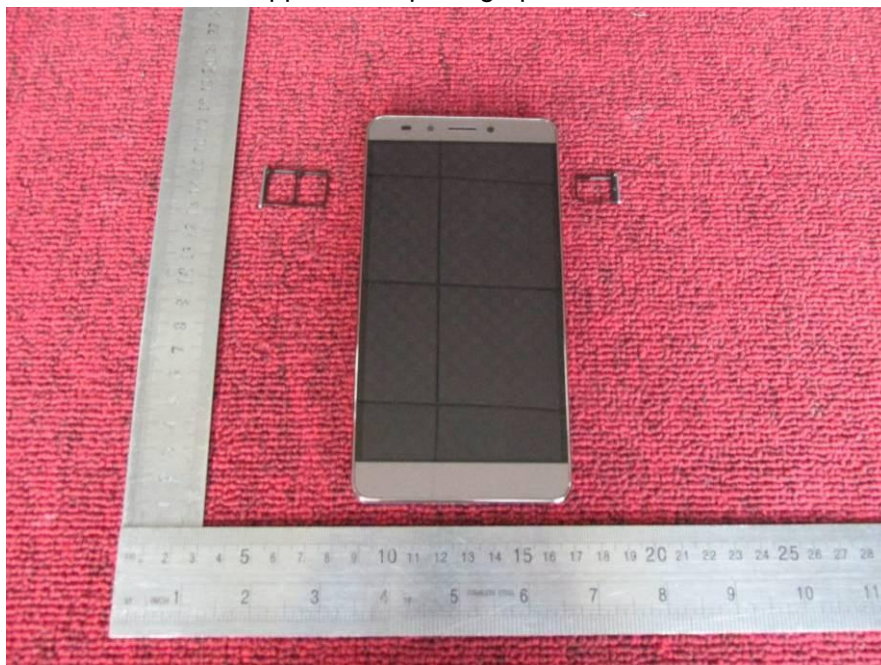




Appearance photograph of EUT



Appearance photograph of EUT



Internal photograph of EUT

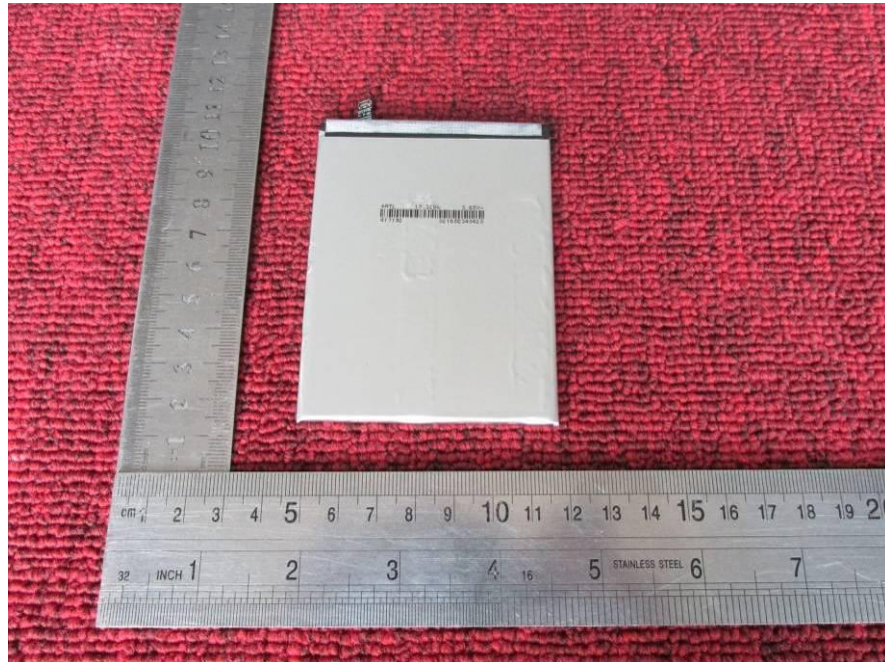


Internal photograph of EUT





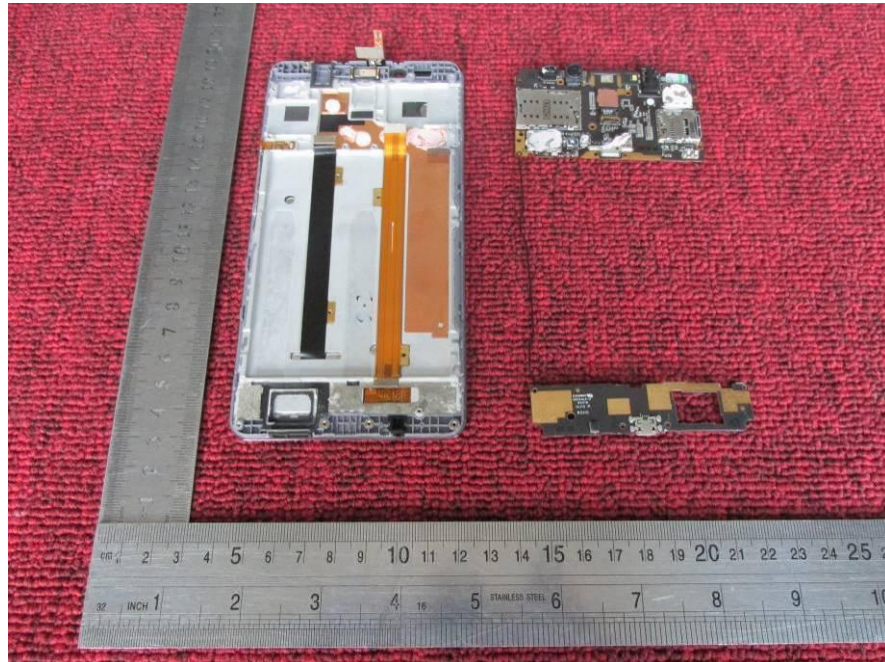
Internal photograph of EUT



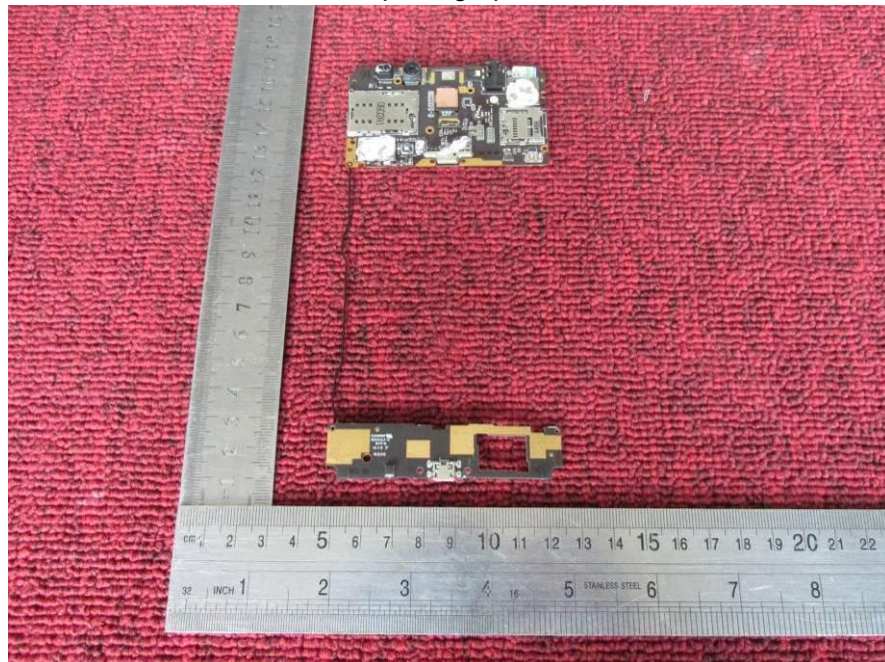
Internal photograph of EUT



Internal photograph of EUT

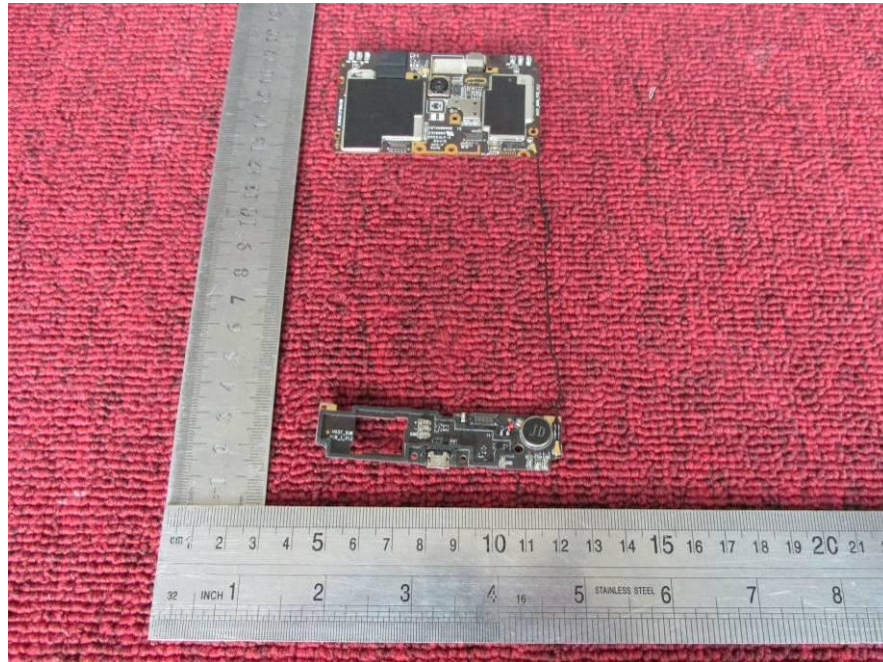


Internal photograph of EUT

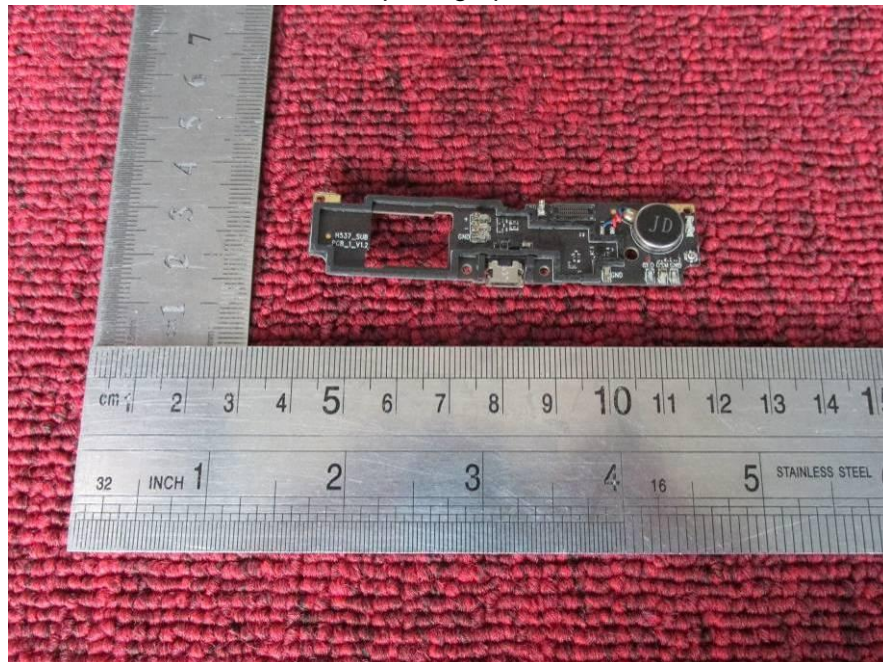




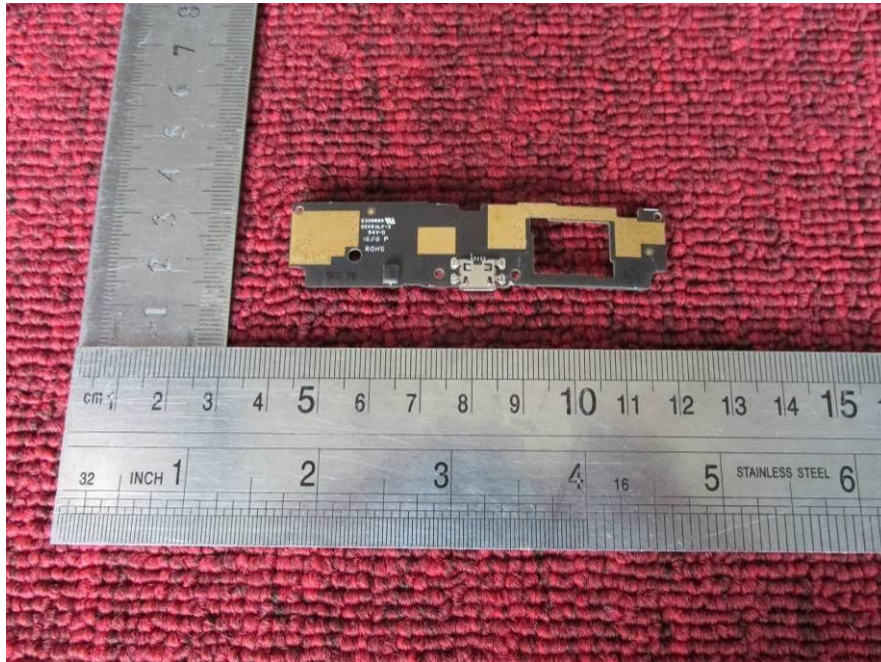
Internal photograph of EUT



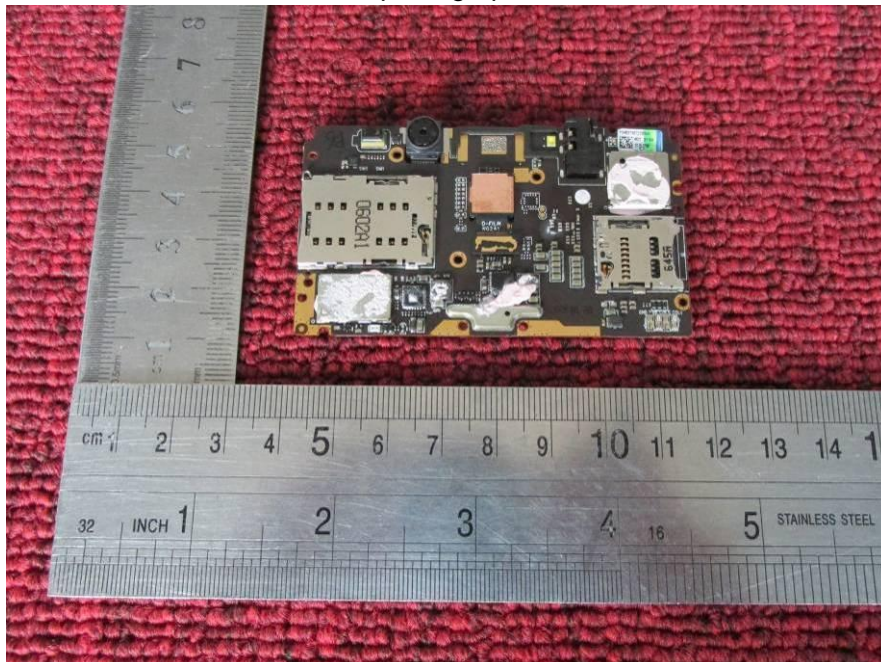
Internal photograph of EUT



Internal photograph of EUT

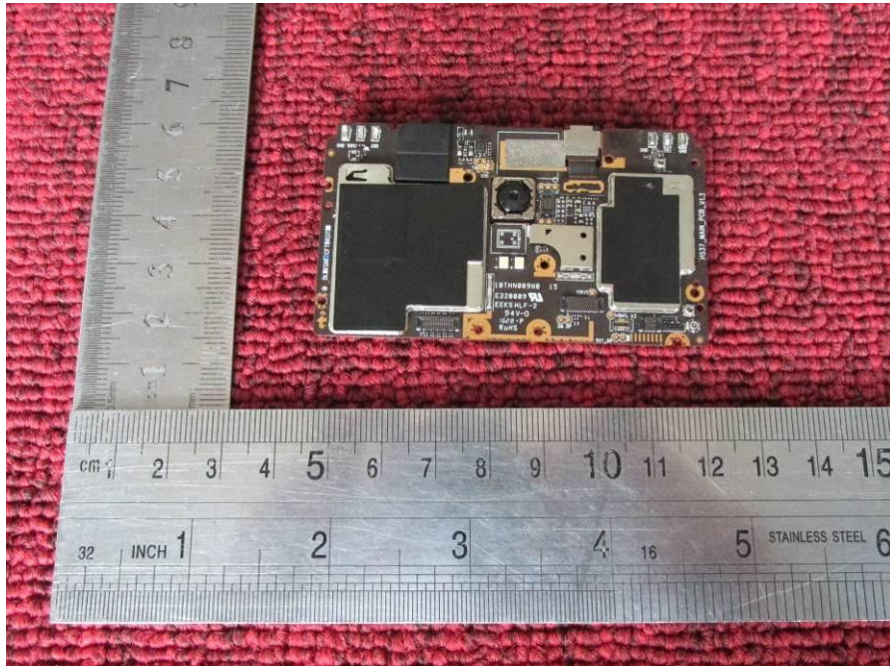


Internal photograph of EUT

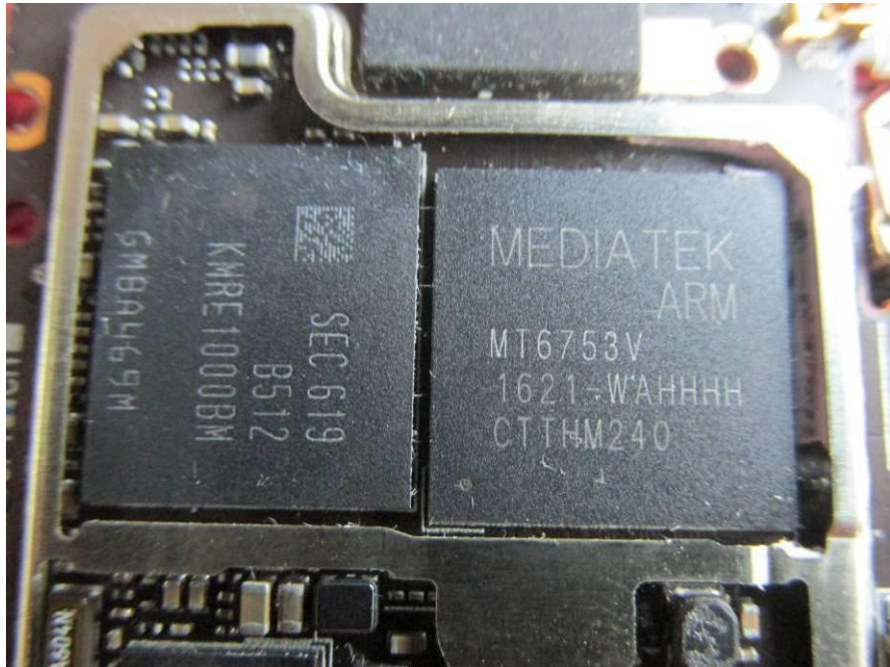




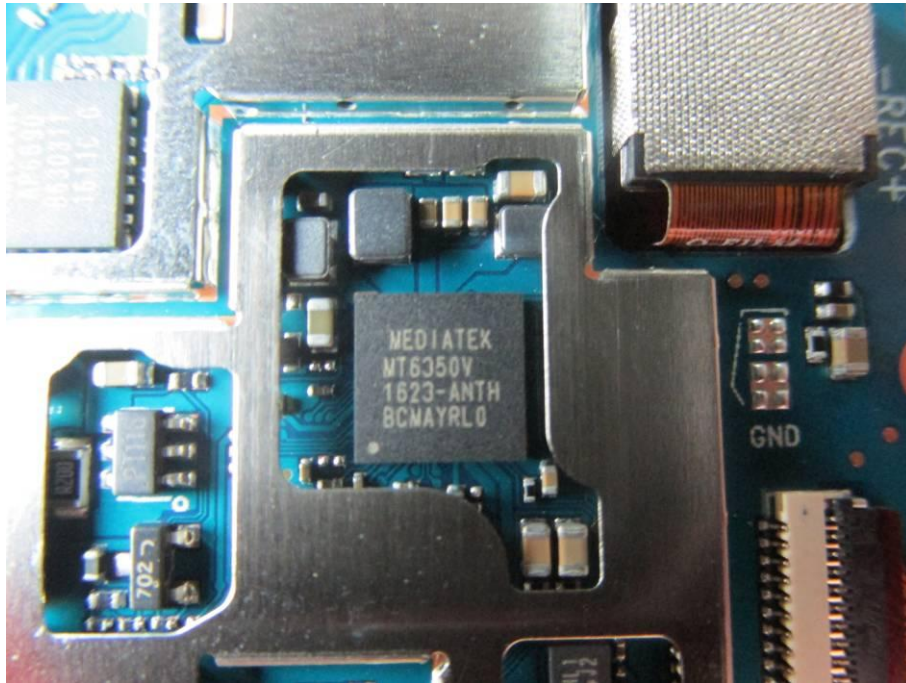
Internal photograph of EUT



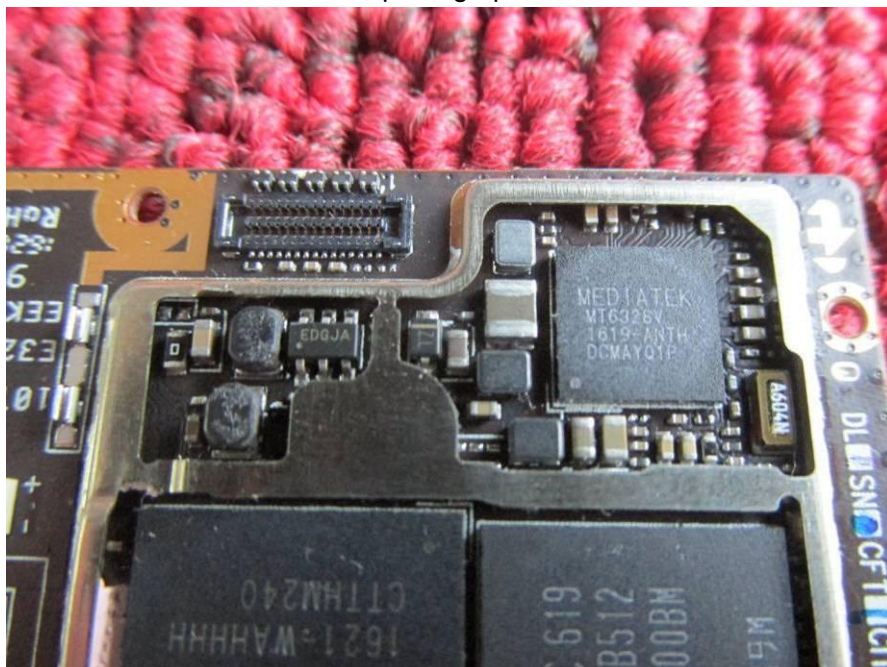
Internal photograph of EUT



Internal photograph of EUT

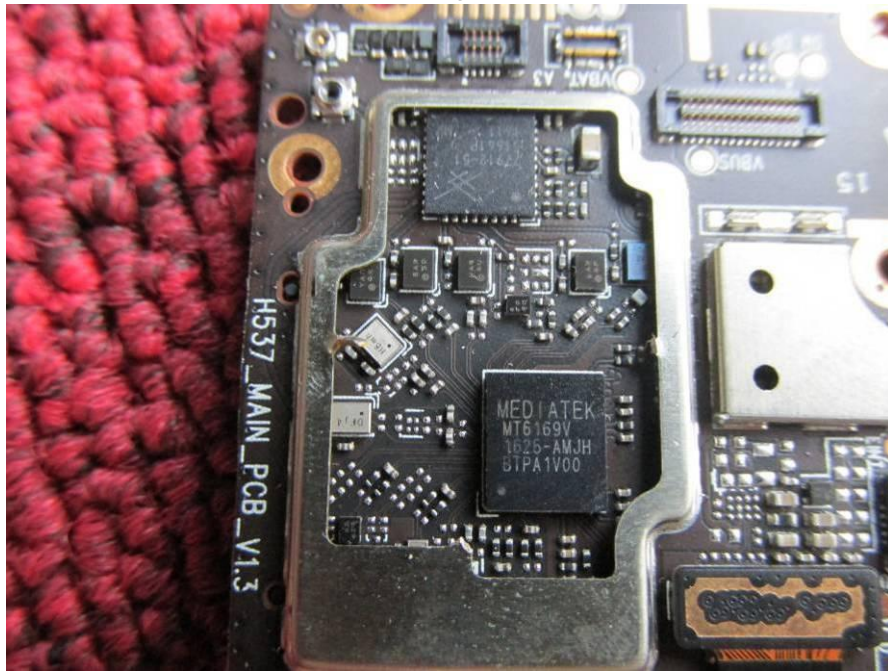


Internal photograph of EUT

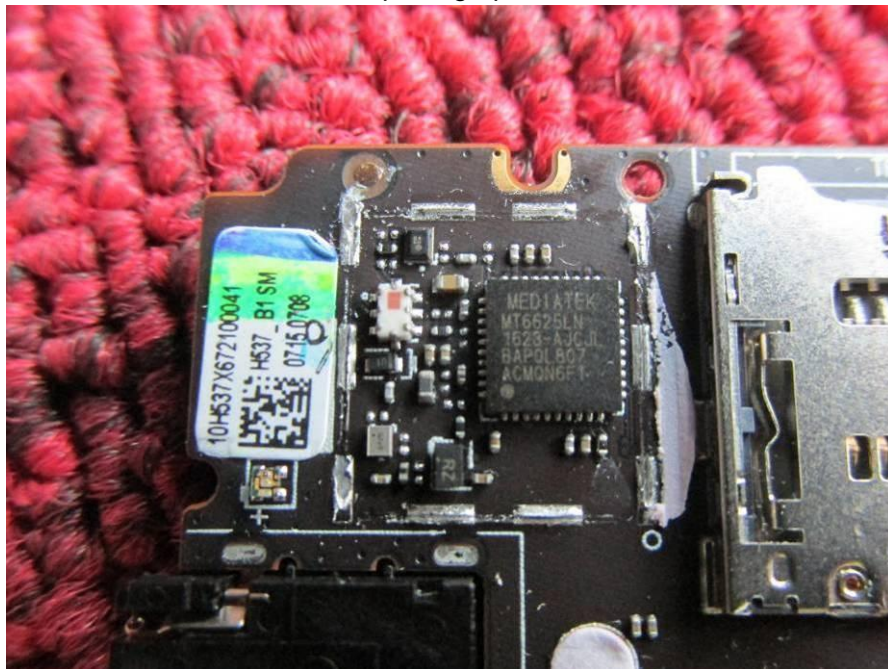




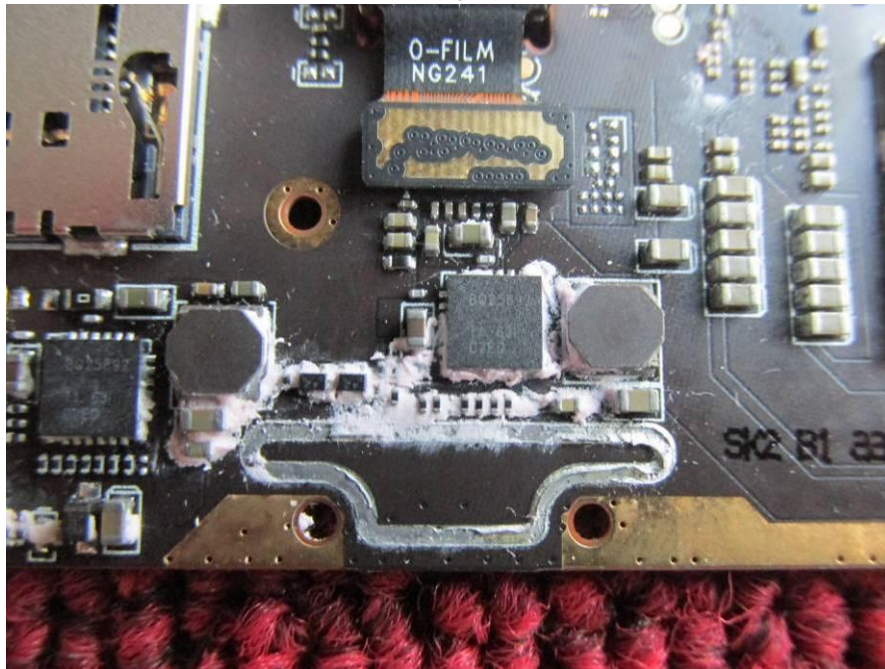
Internal photograph of EUT



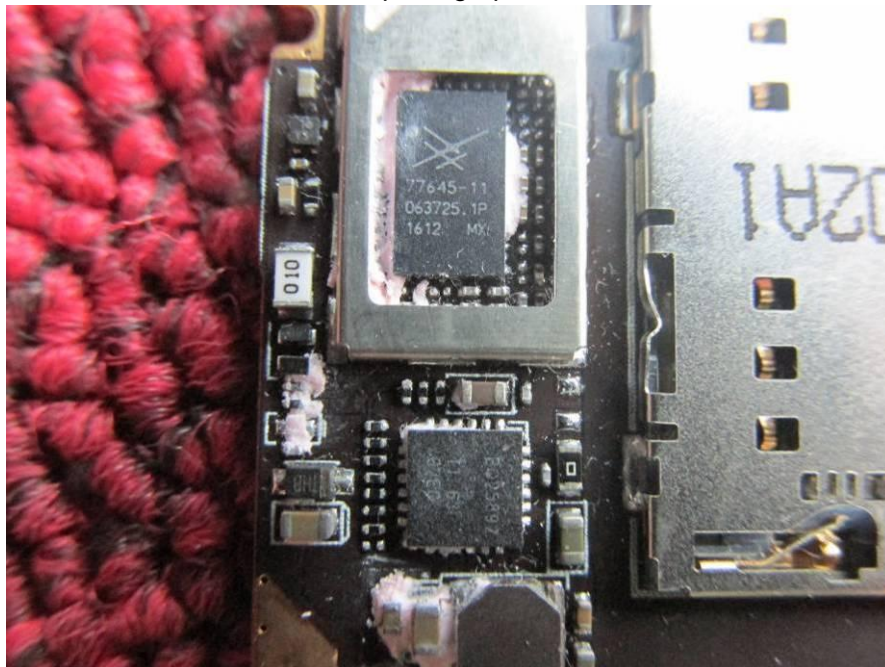
Internal photograph of EUT



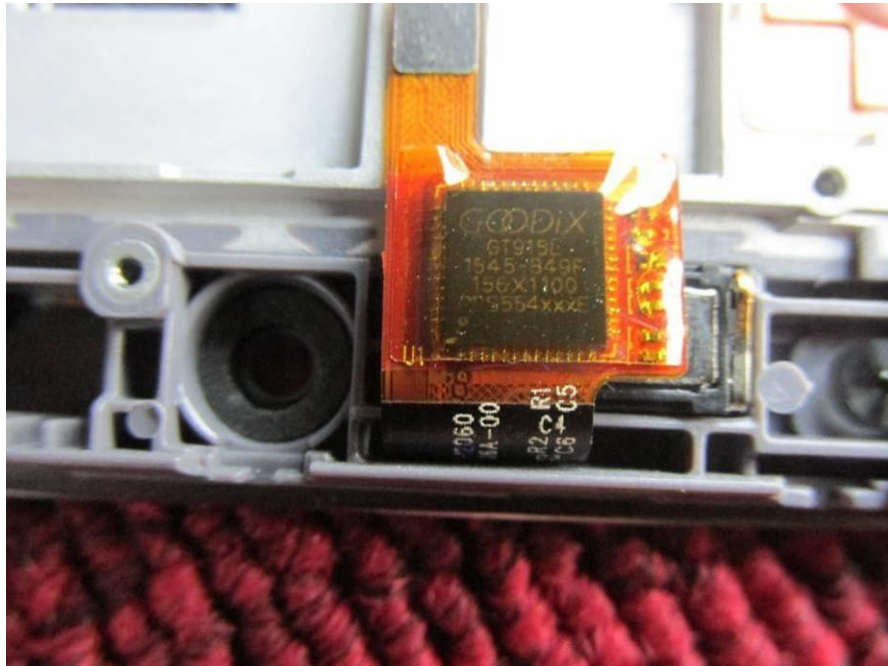
Internal photograph of EUT



Internal photograph of EUT



Internal photograph of EUT



---END OF REPORT---