



SATIMO 225, rue Pierre Rivoalon 29200 Brest - France
Tel: +33 (0)2 98 05 13 34; Fax: +33 (0)2 98 05 53 87; www.satimo.com



Annex B Measurement Results

Tested Model : X571

Report Number:

FCC17060520A

MEASUREMENT 1

Type: Phone measurement (Complete)

Date of measurement: 19/6/2017

Measurement duration: 8 minutes 58 seconds

A. Experimental conditions.

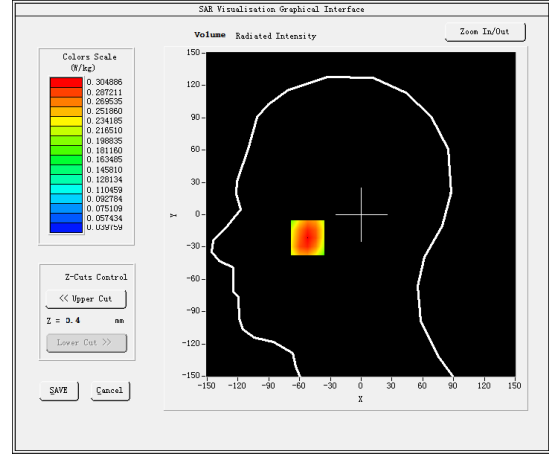
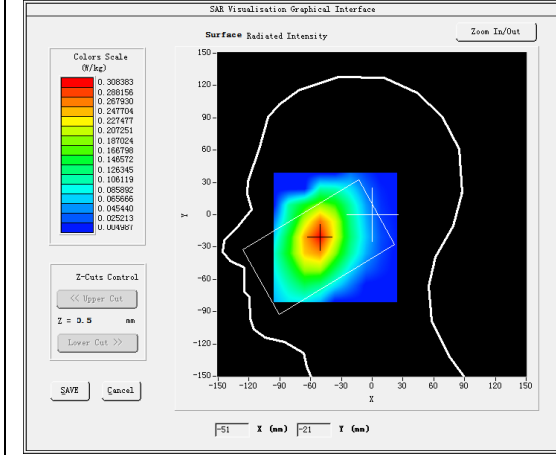
<u>Area Scan</u>	<u>dx=15mm dy=15mm</u>
<u>ZoomScan</u>	<u>5x5x7,dx=8mm dy=8mm dz=5mm,Complete</u>
<u>Phantom</u>	<u>Left head</u>
<u>Device Position</u>	<u>Cheek</u>
<u>Band</u>	<u>CUSTOM (GPRS850 4Tx)</u>
<u>Channels</u>	<u>Low</u>
<u>Signal</u>	<u>Duty Cycle: 2.00 (Crest factor: 2.0)</u>
<u>Conversion factor</u>	<u>4.93</u>

B. SAR Measurement Results

Frequency (MHz)	824.200012
Relative permittivity (real part)	40.336941
Relative permittivity (imaginary part)	19.790300
Conductivity (S/m)	0.906176
Variation (%)	0.670000

SURFACE SAR

VOLUME SAR

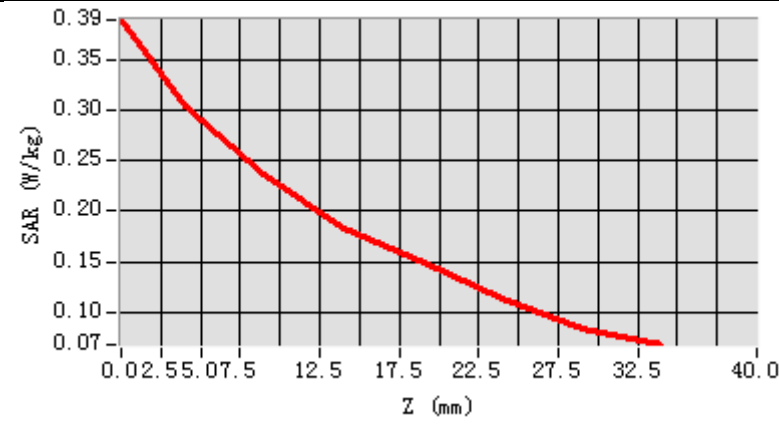


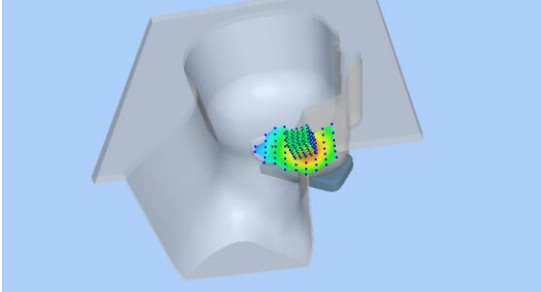
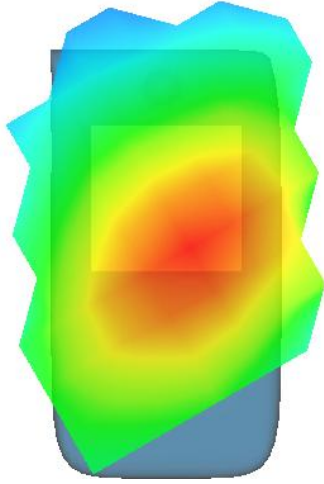
Maximum location: X=-52.00, Y=-21.00

SAR Peak: 0.39 W/kg

SAR 10g (W/Kg)	0.216209
SAR 1g (W/Kg)	0.300364

Z (mm)	0.00	4.00	9.00	14.00	19.00	24.00	29.00
SAR (W/Kg)	0.3906	0.3049	0.2359	0.1823	0.1491	0.1124	0.0833



3D screen shot	Hot spot position
	

MEASUREMENT 2

Rear-side-low

Type: Phone measurement (Complete)

Date of measurement: 19/6/2017

Measurement duration: 10 minutes 23 seconds

A. Experimental conditions.

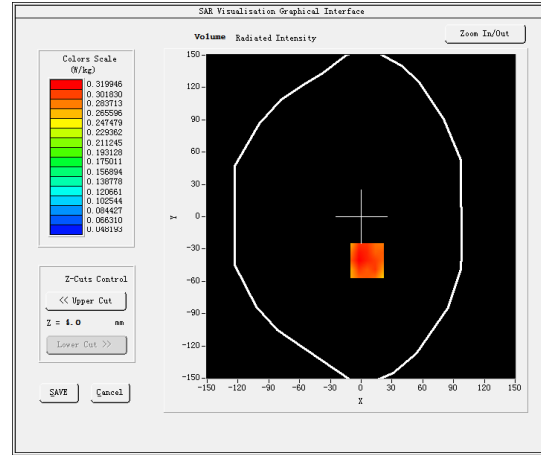
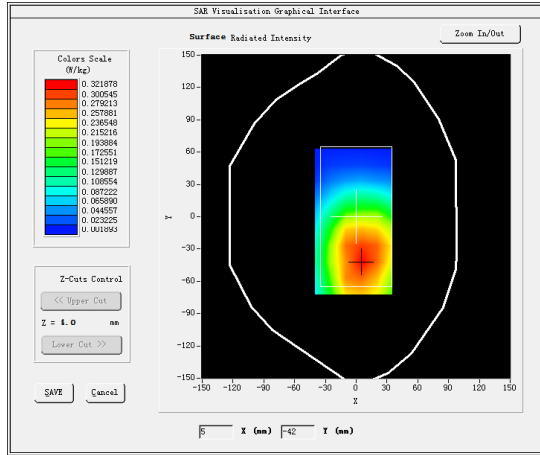
<u>Area Scan</u>	<u>dx=15mm dy=15mm</u>
<u>ZoomScan</u>	<u>5x5x7,dx=8mm dy=8mm dz=5mm,Complete</u>
<u>Phantom</u>	<u>Validation plane</u>
<u>Device Position</u>	<u>Body</u>
<u>Band</u>	<u>CUSTOM (GPRS850 4Tx)</u>
<u>Channels</u>	<u>Low</u>
<u>Signal</u>	<u>Duty Cycle: 2.00 (Crest factor: 2.0)</u>
<u>Conversion factor</u>	<u>5.07</u>

B. SAR Measurement Results

Frequency (MHz)	824.200012
Relative permittivity (real part)	54.022579
Relative permittivity (imaginary part)	21.248079
Conductivity (S/m)	0.972926
Variation (%)	1.780000

SURFACE SAR

VOLUME SAR

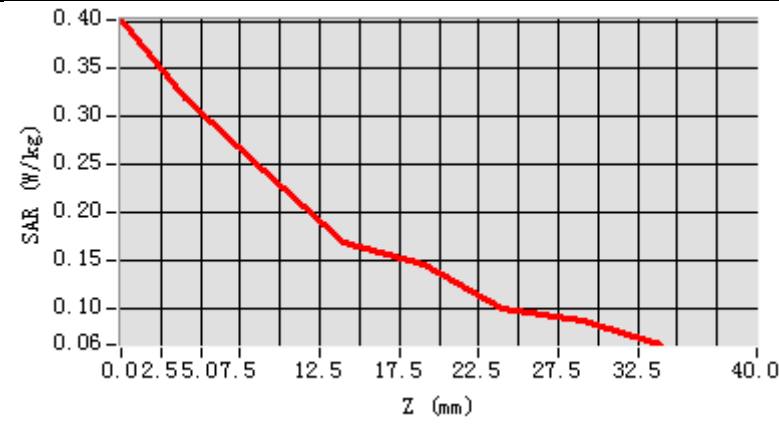


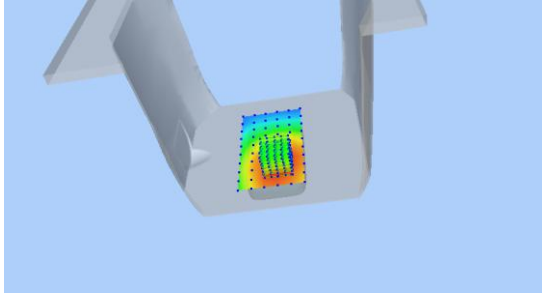
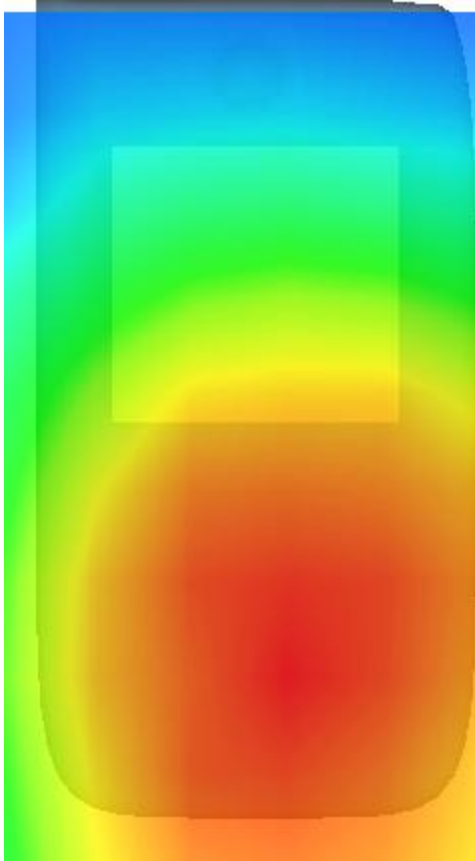
Maximum location: X=6.00, Y=-41.00

SAR Peak: 0.41 W/kg

SAR 10g (W/Kg)	0.228599
SAR 1g (W/Kg)	0.311769

Z (mm)	0.00	4.00	9.00	14.00	19.00	24.00	29.00
SAR (W/Kg)	0.4012	0.3199	0.2433	0.1682	0.1450	0.0997	0.0862



3D screen shot	Hot spot position
	

MEASUREMENT 3

Type: Phone measurement (Complete)

Date of measurement: 20/6/2017

Measurement duration: 12 minutes 30 seconds

A. Experimental conditions.

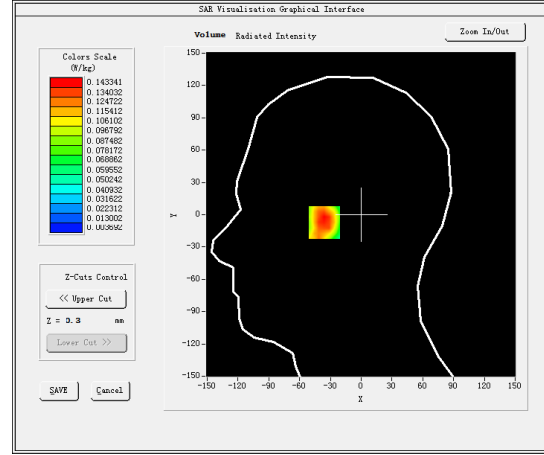
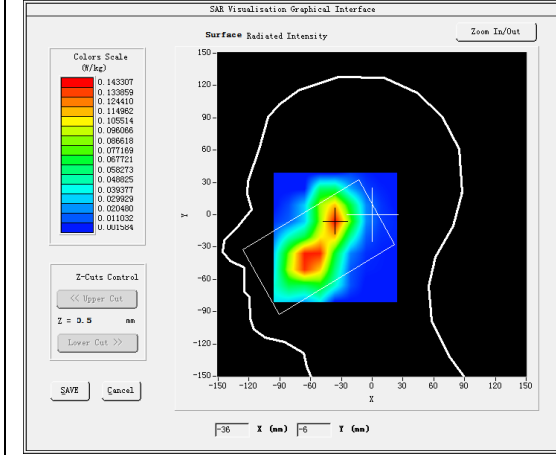
<u>Area Scan</u>	<u>dx=15mm dy=15mm</u>
<u>ZoomScan</u>	<u>7x7x7,dx=5mm dy=5mm dz=5mm,Complete</u>
<u>Phantom</u>	<u>Left head</u>
<u>Device Position</u>	<u>Cheek</u>
<u>Band</u>	<u>CUSTOM (GPRS1900 4Tx)</u>
<u>Channels</u>	<u>Middle</u>
<u>Signal</u>	<u>Duty Cycle: 2.00 (Crest factor: 2.0)</u>
<u>Conversion factor</u>	<u>4.63</u>

B. SAR Measurement Results

Frequency (MHz)	1880.000000
Relative permittivity (real part)	39.914200
Relative permittivity (imaginary part)	13.434300
Conductivity (S/m)	1.403138
Variation (%)	-0.420000

SURFACE SAR

VOLUME SAR

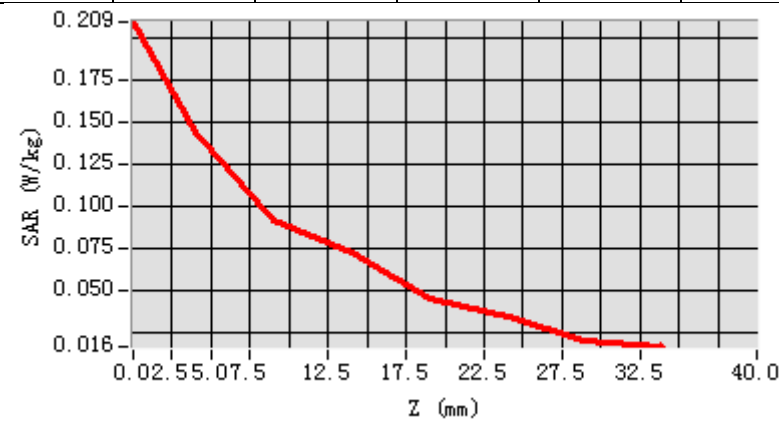


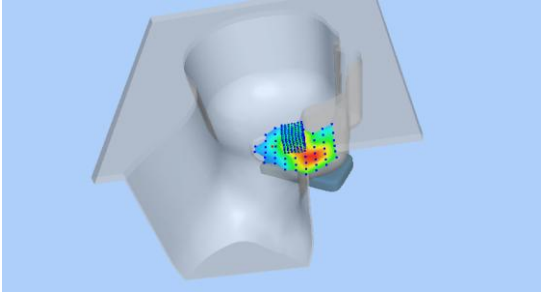
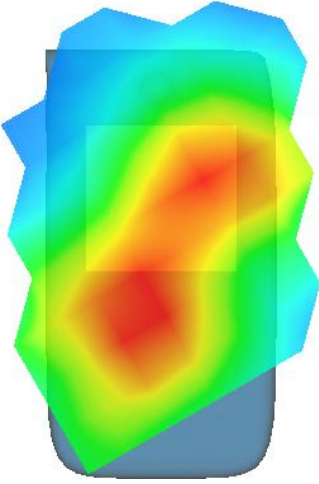
Maximum location: X=-36.00, Y=-6.00

SAR Peak: 0.19 W/kg

SAR 10g (W/Kg)	0.085648
SAR 1g (W/Kg)	0.133510

Z (mm)	0.00	4.00	9.00	14.00	19.00	24.00	29.00
SAR (W/Kg)	0.2093	0.1433	0.0916	0.0722	0.0444	0.0339	0.0199



3D screen shot	Hot spot position
	

MEASUREMENT 4

Front-side-middle

Type: Phone measurement (Complete)

Date of measurement: 20/6/2017

Measurement duration: 12 minutes 3 seconds

A. Experimental conditions.

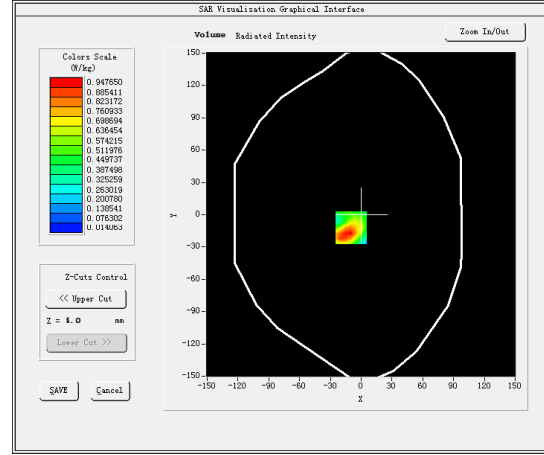
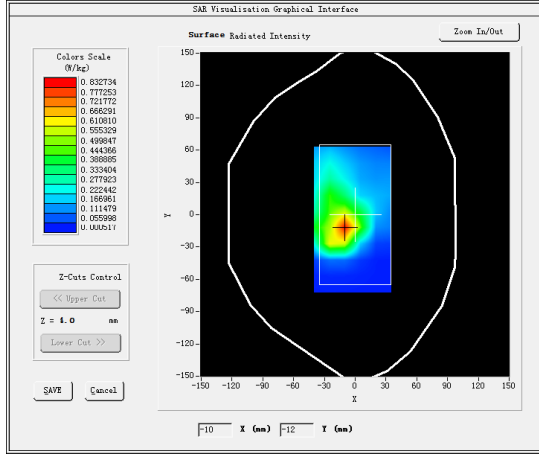
<u>Area Scan</u>	<u>dx=15mm dy=15mm</u>
<u>ZoomScan</u>	<u>7x7x7,dx=5mm dy=5mm dz=5mm,Complete</u>
<u>Phantom</u>	<u>Validation plane</u>
<u>Device Position</u>	<u>Body</u>
<u>Band</u>	<u>CUSTOM (GPRS1900 4Tx)</u>
<u>Channels</u>	<u>Middle</u>
<u>Signal</u>	<u>Duty Cycle: 2.00 (Crest factor: 2.0)</u>
<u>Conversion factor</u>	<u>4.78</u>

B. SAR Measurement Results

Frequency (MHz)	1880.000000
Relative permittivity (real part)	53.356098
Relative permittivity (imaginary part)	14.668600
Conductivity (S/m)	1.532054
Variation (%)	-2.480000

SURFACE SAR

VOLUME SAR

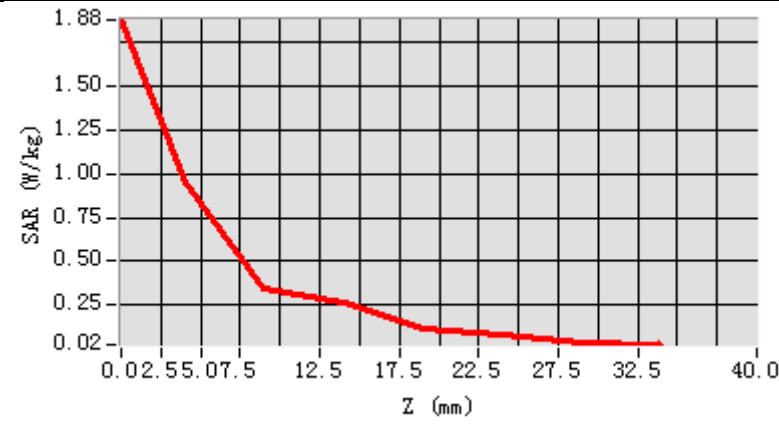


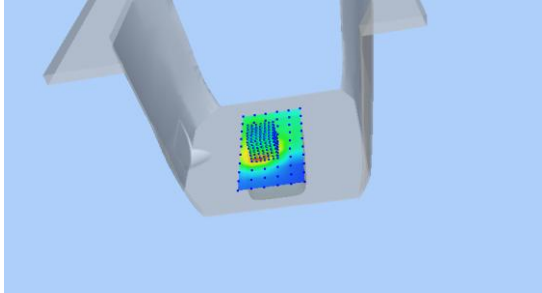
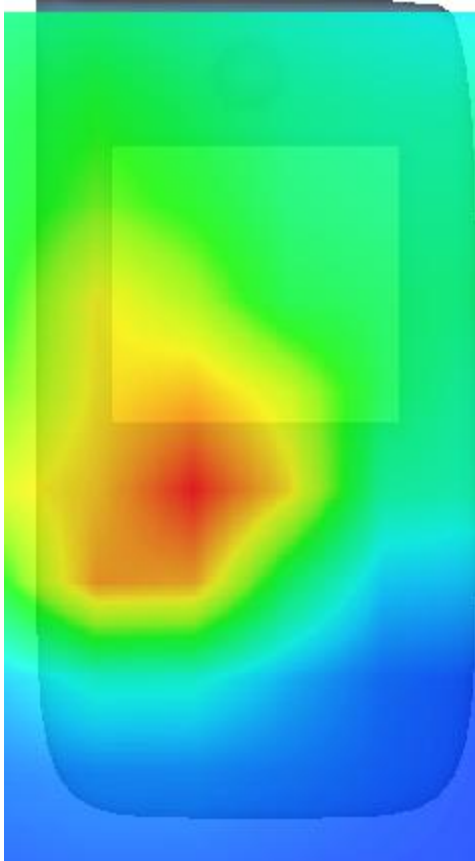
Maximum location: X=-10.00, Y=-12.00

SAR Peak: 1.60 W/kg

SAR 10g (W/Kg)	0.432315
SAR 1g (W/Kg)	0.774038

Z (mm)	0.00	4.00	9.00	14.00	19.00	24.00	29.00
SAR (W/Kg)	1.8766	0.9476	0.3485	0.2650	0.1111	0.0772	0.0345



3D screen shot	Hot spot position
	

MEASUREMENT 5

Type: Phone measurement (Complete)

Date of measurement: 20/6/2017

Measurement duration: 13 minutes 51 seconds

A. Experimental conditions.

<u>Area Scan</u>	<u>dx=15mm dy=15mm</u>
<u>ZoomScan</u>	<u>7x7x7,dx=5mm dy=5mm</u> <u>dz=5mm,Complete</u>
<u>Phantom</u>	<u>Left head</u>
<u>Device Position</u>	<u>Cheek</u>
<u>Band</u>	<u>Band2 WCDMA1900</u>
<u>Channels</u>	<u>High</u>
<u>Signal</u>	<u>Duty cycle:1:1</u>
<u>Conversion factor</u>	<u>4.63</u>

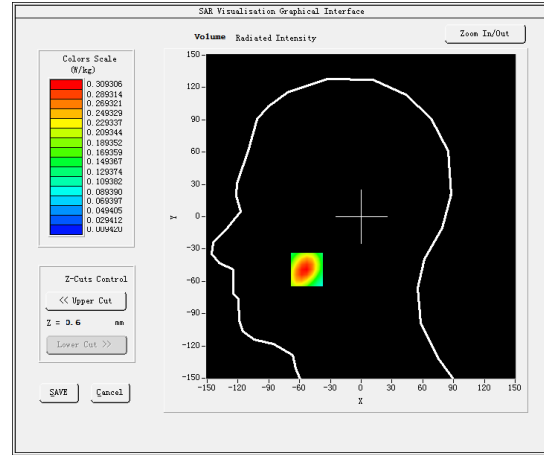
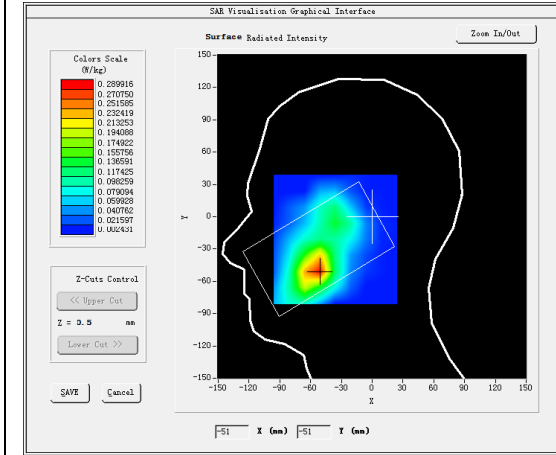
B. SAR Measurement Results

Higher Band SAR (Channel 9538):

Frequency (MHz)	1907.599976
Relative permittivity (real part)	39.971419
Relative permittivity (imaginary part)	14.732669
Conductivity (S/m)	1.562592
Variation (%)	0.830000

SURFACE SAR

VOLUME SAR

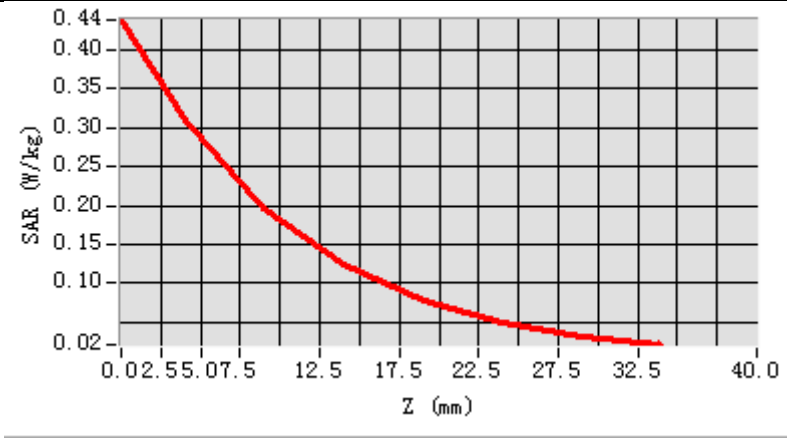


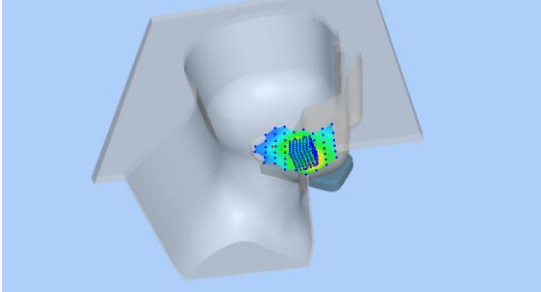
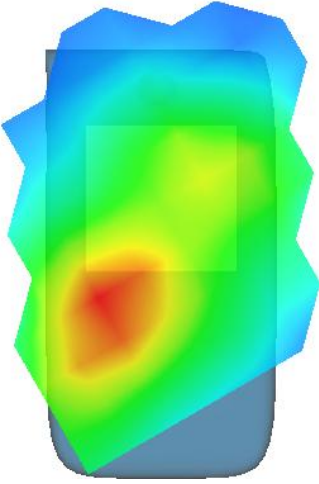
Maximum location: X=-53.00, Y=-49.00

SAR Peak: 0.44 W/kg

SAR 10g (W/Kg)	0.172233
SAR 1g (W/Kg)	0.293822

Z (mm)	0.00	4.00	9.00	14.00	19.00	24.00	29.00
SAR (W/Kg)	0.4380	0.3093	0.1966	0.1243	0.0782	0.0499	0.0326



3D screen shot	Hot spot position
	

MEASUREMENT 6

Front-side-high

Type: Phone measurement (Complete)

Date of measurement: 20/6/2017

Measurement duration: 11 minutes 51 seconds

A. Experimental conditions.

<u>Area Scan</u>	<u>dx=15mm dy=15mm</u>
<u>ZoomScan</u>	<u>7x7x7,dx=5mm dy=5mm dz=5mm,Complete</u>
<u>Phantom</u>	<u>Validation plane</u>
<u>Device Position</u>	<u>Body</u>
<u>Band</u>	<u>Band2 WCDMA1900</u>
<u>Channels</u>	<u>High</u>
<u>Signal</u>	<u>Duty cycle:1:1</u>
<u>Conversion factor</u>	<u>4.78</u>

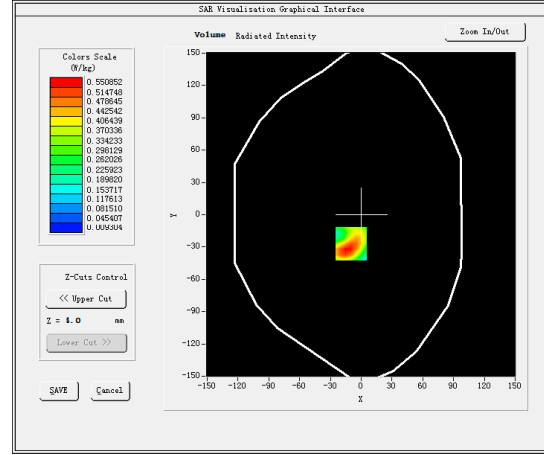
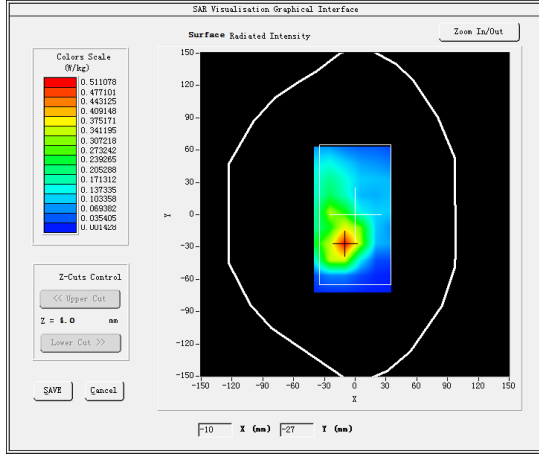
B. SAR Measurement Results

Higher Band SAR (Channel 9538):

Frequency (MHz)	1907.599976
Relative permittivity (real part)	53.376419
Relative permittivity (imaginary part)	14.801140
Conductivity (S/m)	1.568592
Variation (%)	-0.960000

SURFACE SAR

VOLUME SAR

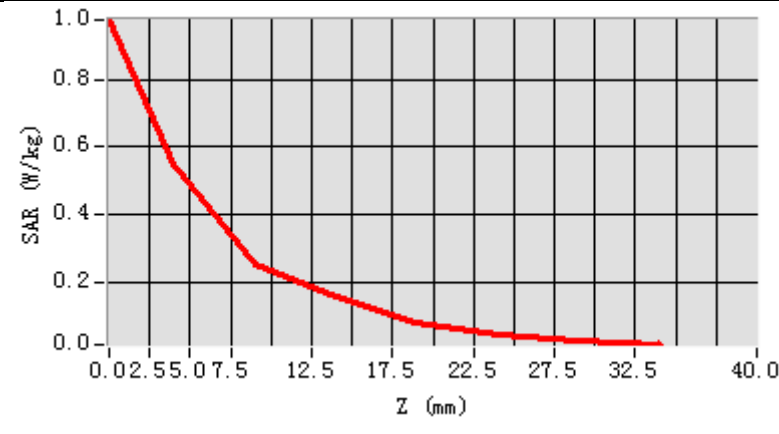


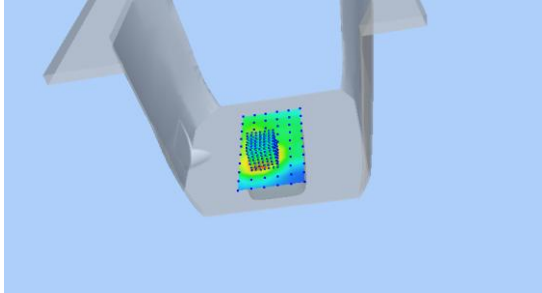
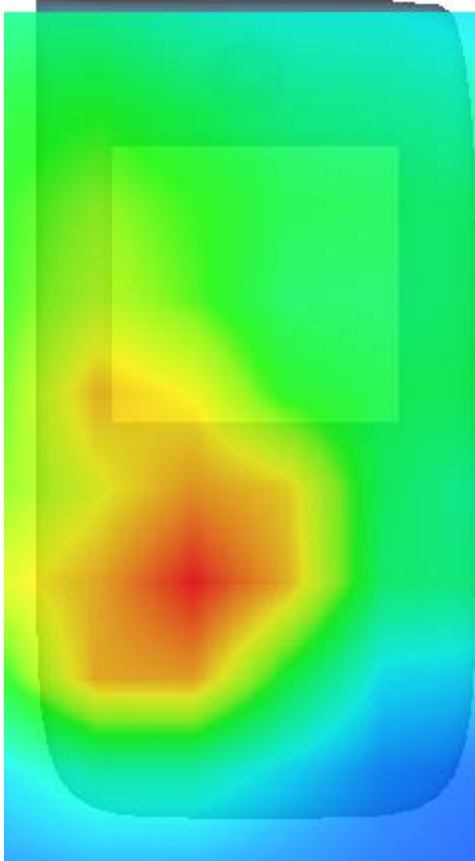
Maximum location: X=-10.00, Y=-27.00

SAR Peak: 0.89 W/kg

SAR 10g (W/Kg)	0.264196
SAR 1g (W/Kg)	0.526232

Z (mm)	0.00	4.00	9.00	14.00	19.00	24.00	29.00
SAR (W/Kg)	0.9771	0.5509	0.2540	0.1567	0.0805	0.0467	0.0257



3D screen shot	Hot spot position
	

MEASUREMENT 7

Type: Phone measurement (Complete)

Date of measurement: 16/6/2017

Measurement duration: 9 minutes 20 seconds

A. Experimental conditions.

<u>Area Scan</u>	<u>dx=15mm dy=15mm</u>
<u>ZoomScan</u>	<u>5x5x7,dx=8mm dy=8mm dz=5mm,Complete</u>
<u>Phantom</u>	<u>Left head</u>
<u>Device Position</u>	<u>Cheek</u>
<u>Band</u>	<u>Band4 WCDMA1700</u>
<u>Channels</u>	<u>Middle</u>
<u>Signal</u>	<u>Duty cycle:1:1</u>
<u>Conversion factor</u>	<u>4.01</u>

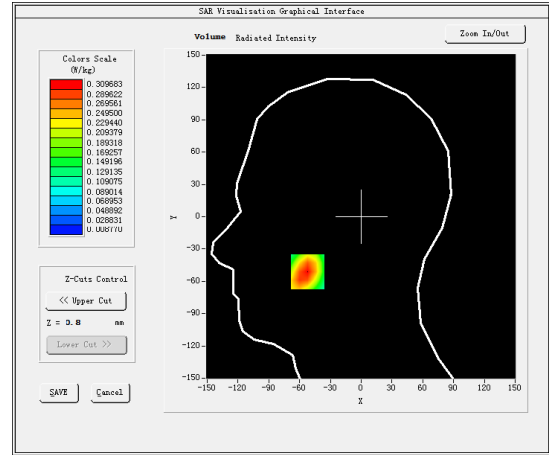
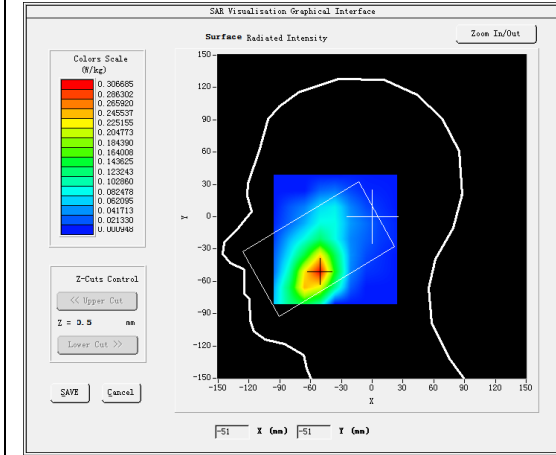
B. SAR Measurement Results

Middle Band SAR (Channel 1413):

Frequency (MHz)	1732.500000
Relative permittivity (real part)	39.768299
Relative permittivity (imaginary part)	14.198700
Conductivity (S/m)	1.366230
Variation (%)	0.890000

SURFACE SAR

VOLUME SAR

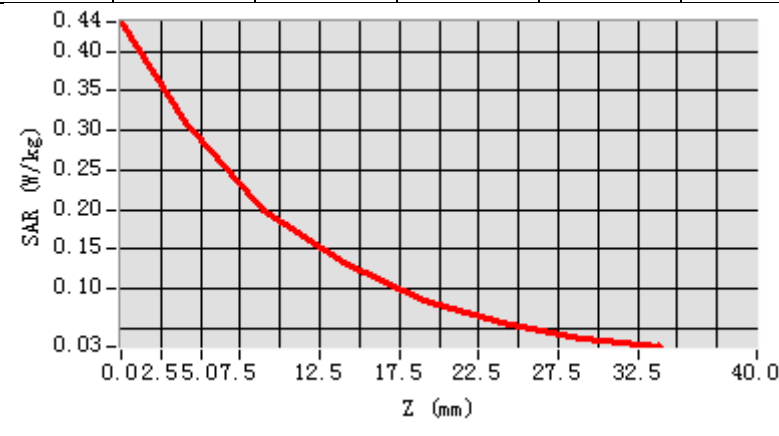


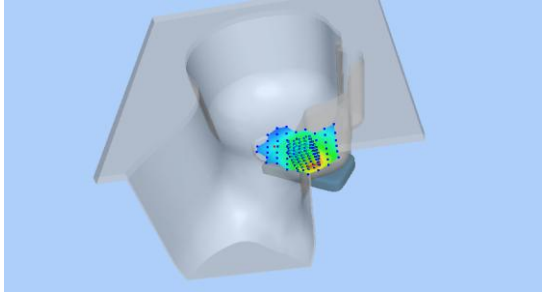
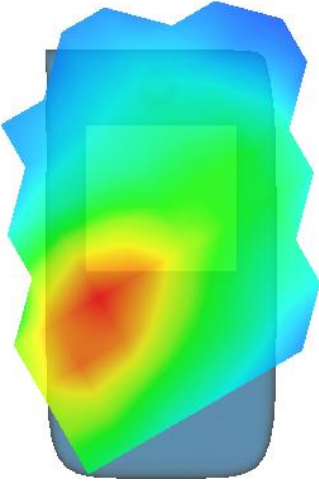
Maximum location: X=-52.00, Y=-51.00

SAR Peak: 0.45 W/kg

SAR 10g (W/Kg)	0.179319
SAR 1g (W/Kg)	0.298359

Z (mm)	0.00	4.00	9.00	14.00	19.00	24.00	29.00
SAR (W/Kg)	0.4373	0.3097	0.1995	0.1323	0.0851	0.0573	0.0381



3D screen shot	Hot spot position
	

MEASUREMENT 8

Bottom-side-middle

Type: Phone measurement (Complete)

Date of measurement: 16/6/2017

Measurement duration: 10 minutes 1 seconds

A. Experimental conditions.

<u>Area Scan</u>	<u>dx=15mm dy=15mm</u>
<u>ZoomScan</u>	<u>5x5x7,dx=8mm dy=8mm dz=5mm,Complete</u>
<u>Phantom</u>	<u>Validation plane</u>
<u>Device Position</u>	<u>Body</u>
<u>Band</u>	<u>Band4 WCDMA1700</u>
<u>Channels</u>	<u>Middle</u>
<u>Signal</u>	<u>Duty cycle:1:1</u>
<u>Conversion factor</u>	<u>4.16</u>

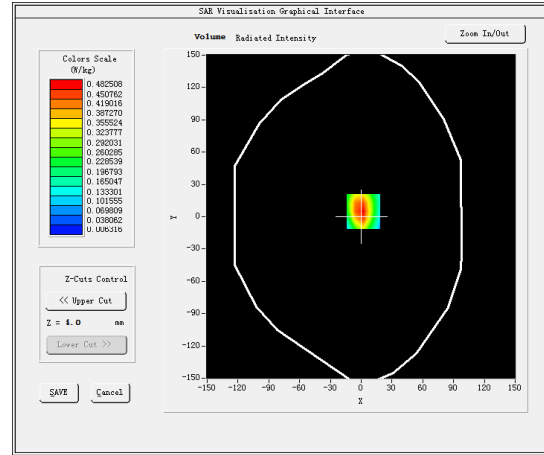
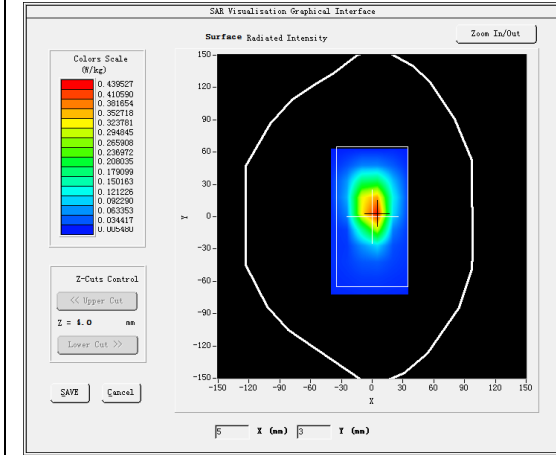
B. SAR Measurement Results

Middle Band SAR (Channel 1413):

Frequency (MHz)	1732.500000
Relative permittivity (real part)	53.306900
Relative permittivity (imaginary part)	15.297200
Conductivity (S/m)	1.471931
Variation (%)	-0.200000

SURFACE SAR

VOLUME SAR

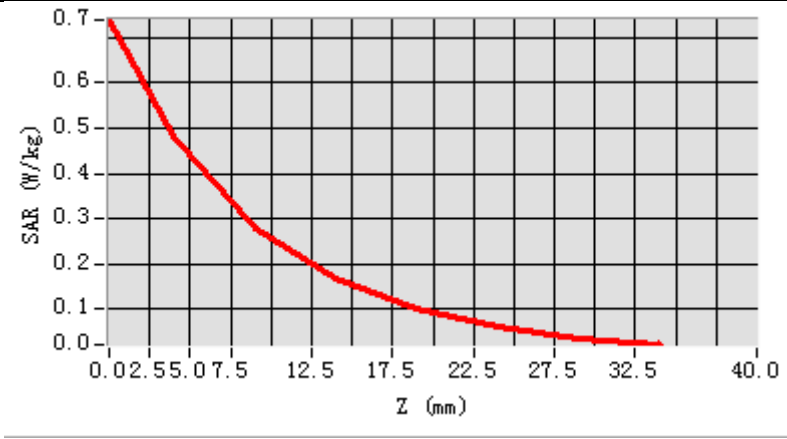


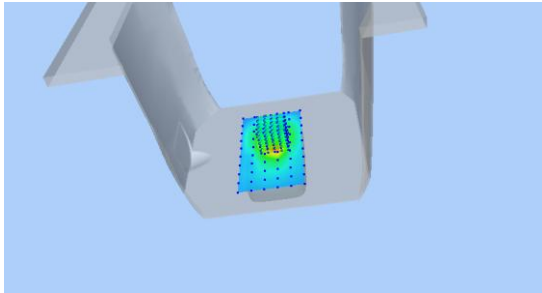
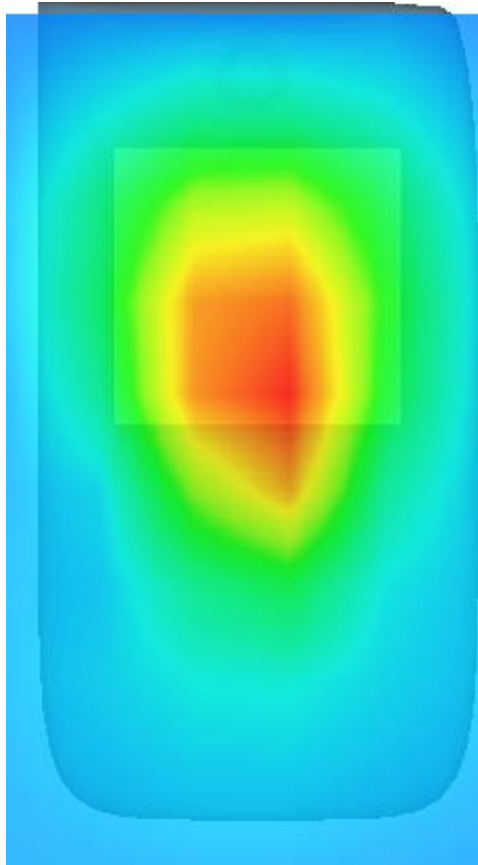
Maximum location: X=2.00, Y=5.00

SAR Peak: 0.76 W/kg

SAR 10g (W/Kg)	0.248383
SAR 1g (W/Kg)	0.465219

Z (mm)	0.00	4.00	9.00	14.00	19.00	24.00	29.00
SAR (W/Kg)	0.7390	0.4825	0.2786	0.1684	0.1000	0.0597	0.0360



3D screen shot	Hot spot position
	

MEASUREMENT 9

Type: Phone measurement (Complete)

Date of measurement: 19/6/2017

Measurement duration: 9 minutes 22 seconds

A. Experimental conditions.

<u>Area Scan</u>	<u>dx=15mm dy=15mm</u>
<u>ZoomScan</u>	<u>5x5x7,dx=8mm dy=8mm dz=5mm,Complete</u>
<u>Phantom</u>	<u>Right head</u>
<u>Device Position</u>	<u>Cheek</u>
<u>Band</u>	<u>Band5 WCDMA850</u>
<u>Channels</u>	<u>Low</u>
<u>Signal</u>	<u>Duty cycle:1:1</u>
<u>Conversion factor</u>	<u>4.93</u>

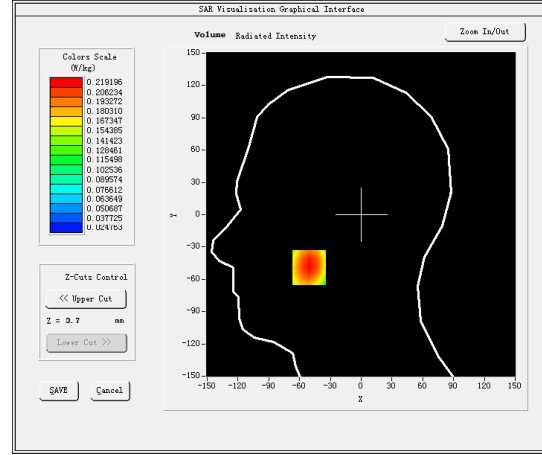
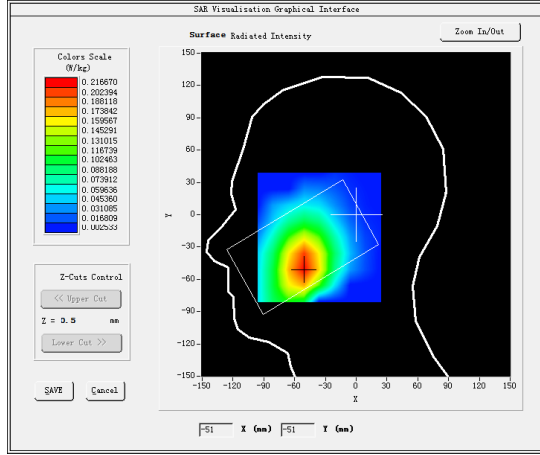
B. SAR Measurement Results

Lower Band SAR (Channel 4132):

Frequency (MHz)	826.400024
Relative permittivity (real part)	40.366501
Relative permittivity (imaginary part)	19.842400
Conductivity (S/m)	0.910987
Variation (%)	2.240000

SURFACE SAR

VOLUME SAR

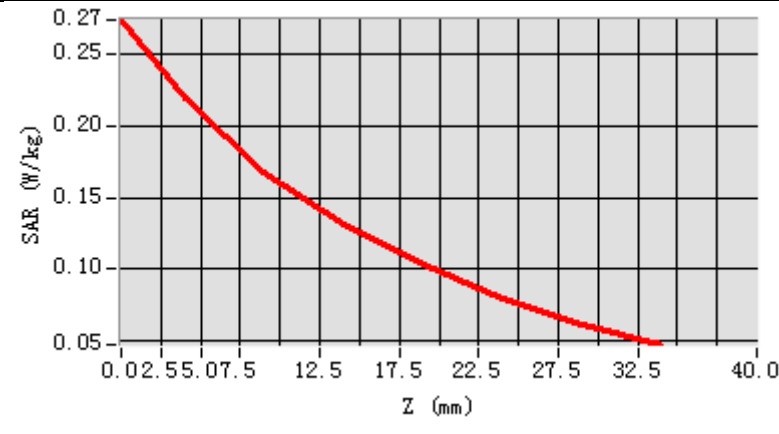


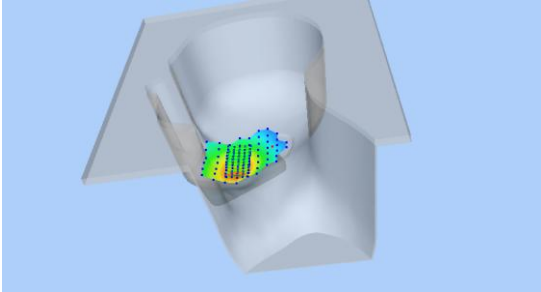
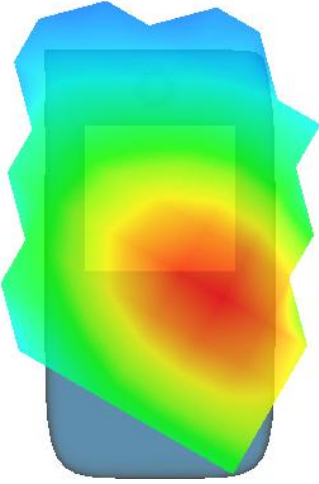
Maximum location: X=-51.00, Y=-49.00

SAR Peak: 0.28 W/kg

SAR 10g (W/Kg)	0.156834
SAR 1g (W/Kg)	0.216176

Z (mm)	0.00	4.00	9.00	14.00	19.00	24.00	29.00
SAR (W/Kg)	0.2744	0.2192	0.1681	0.1319	0.1032	0.0792	0.0614



3D screen shot	Hot spot position
	

MEASUREMENT 10

Rear-side-low

Type: Phone measurement (Complete)

Date of measurement: 19/6/2017

Measurement duration: 7 minutes 45 seconds

A. Experimental conditions.

<u>Area Scan</u>	<u>dx=15mm dy=15mm</u>
<u>ZoomScan</u>	<u>5x5x7,dx=8mm dy=8mm dz=5mm,Complete</u>
<u>Phantom</u>	<u>Validation plane</u>
<u>Device Position</u>	<u>Body</u>
<u>Band</u>	<u>Band5 WCDMA850</u>
<u>Channels</u>	<u>Low</u>
<u>Signal</u>	<u>Duty cycle:1:1</u>
<u>Conversion factor</u>	<u>5.07</u>

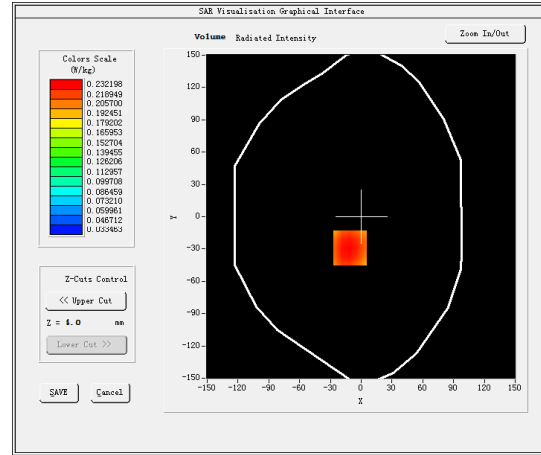
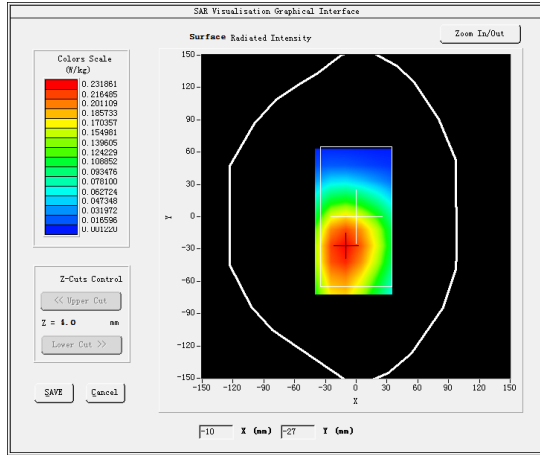
B. SAR Measurement Results

Lower Band SAR (Channel 4132):

Frequency (MHz)	826.400024
Relative permittivity (real part)	54.039879
Relative permittivity (imaginary part)	21.302919
Conductivity (S/m)	0.978041
Variation (%)	0.370000

SURFACE SAR

VOLUME SAR

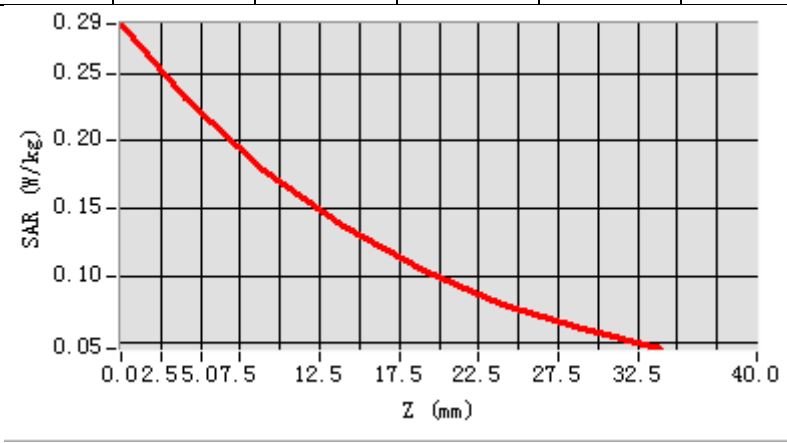


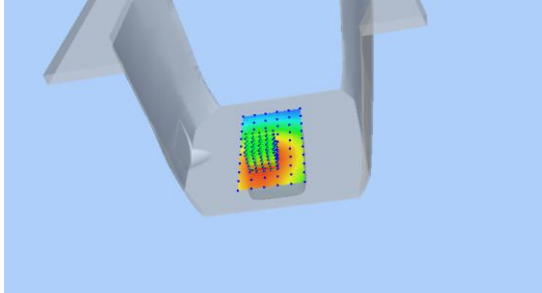
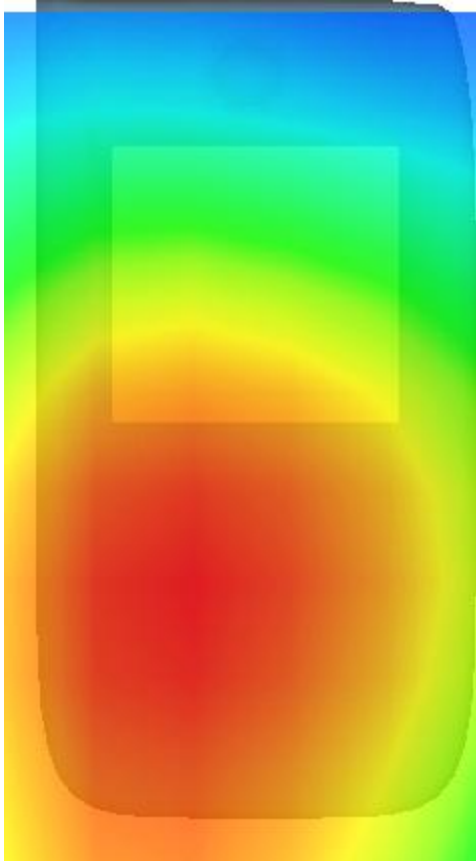
Maximum location: X=-11.00, Y=-29.00

SAR Peak: 0.29 W/kg

SAR 10g (W/Kg)	0.168207
SAR 1g (W/Kg)	0.228233

Z (mm)	0.00	4.00	9.00	14.00	19.00	24.00	29.00
SAR (W/Kg)	0.2864	0.2322	0.1777	0.1361	0.1035	0.0787	0.0601



3D screen shot	Hot spot position
	

MEASUREMENT 11

20M-50RB#25

Type: Phone measurement (Complete)

Date of measurement: 20/6/2017

Measurement duration: 12 minutes 9 seconds

A. Experimental conditions.

<u>Area Scan</u>	<u>dx=15mm dy=15mm</u>
<u>ZoomScan</u>	<u>7x7x7,dx=5mm dy=5mm dz=5mm,Complete</u>
<u>Phantom</u>	<u>Right head</u>
<u>Device Position</u>	<u>Cheek</u>
<u>Band</u>	<u>LTE band 2</u>
<u>Channels</u>	<u>High</u>
<u>Signal</u>	<u>Duty cycle:1:1</u>
<u>Conversion factor</u>	<u>4.63</u>

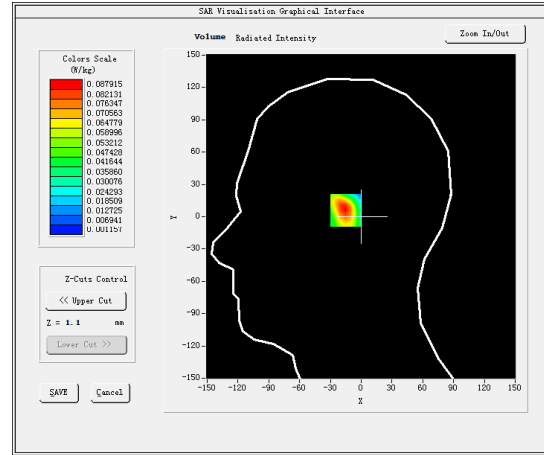
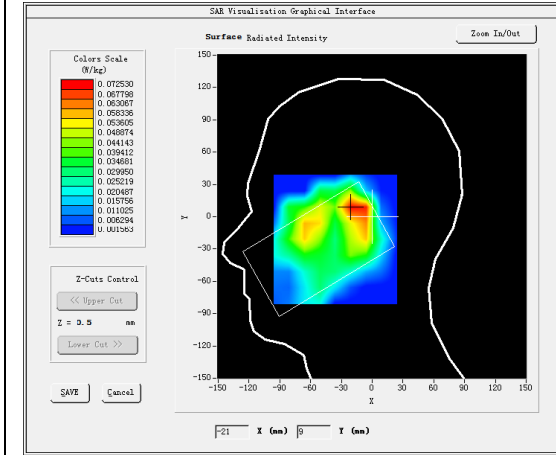
B. SAR Measurement Results

Higher Band SAR (Channel 19100):

Frequency (MHz)	1900.000000
Relative permittivity (real part)	39.971419
Relative permittivity (imaginary part)	14.792470
Conductivity (S/m)	1.562592
Variation (%)	-0.48 0000

SURFACE SAR

VOLUME SAR

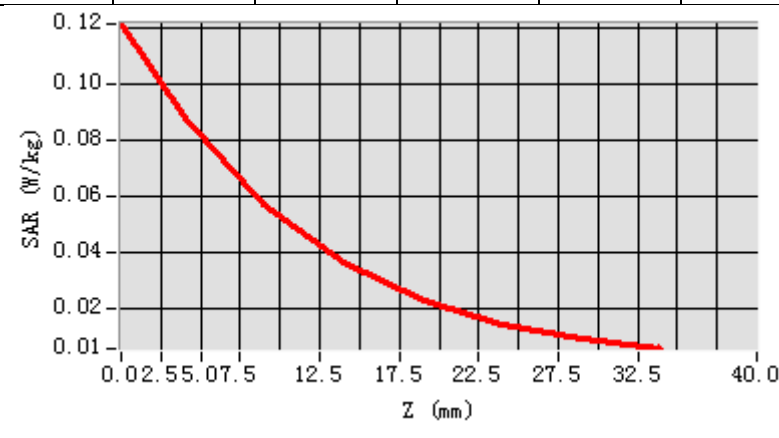


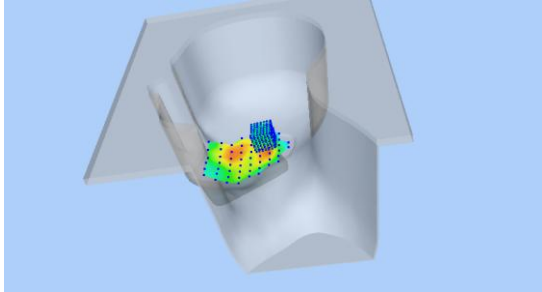
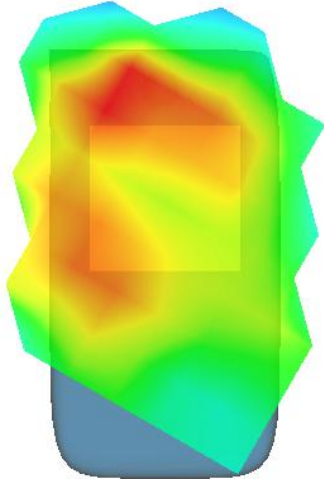
Maximum location: X=-12.00, Y=6.00

SAR Peak: 0.12 W/kg

SAR 10g (W/Kg)	0.053594
SAR 1g (W/Kg)	0.101490

Z (mm)	0.00	4.00	9.00	14.00	19.00	24.00	29.00
SAR (W/Kg)	0.1215	0.0879	0.0573	0.0366	0.0229	0.0143	0.0089



3D screen shot	Hot spot position
	

MEASUREMENT 12

Front-side-20M-1RB#99-high

Type: Phone measurement (Complete)

Date of measurement: 20/6/2017

Measurement duration: 15 minutes 14 seconds

A. Experimental conditions.

<u>Area Scan</u>	<u>dx=15mm dy=15mm</u>
<u>ZoomScan</u>	<u>7x7x7,dx=5mm dy=5mm dz=5mm,Complete</u>
<u>Phantom</u>	<u>Validation plane</u>
<u>Device Position</u>	<u>Body</u>
<u>Band</u>	<u>LTE band 2</u>
<u>Channels</u>	<u>High</u>
<u>Signal</u>	<u>Duty cycle:1:1</u>
<u>Conversion factor</u>	<u>4.78</u>

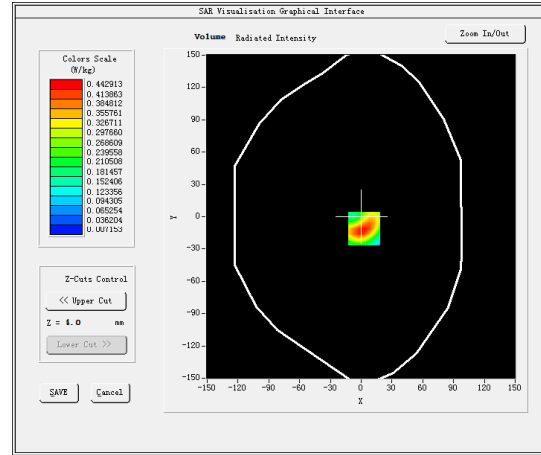
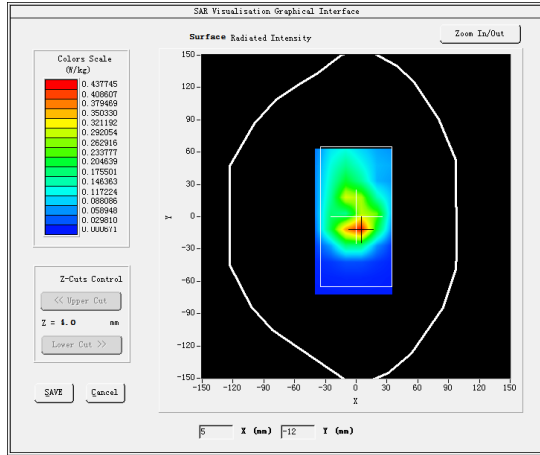
B. SAR Measurement Results

Higher Band SAR (Channel 19150):

Frequency (MHz)	1904.500000
Relative permittivity (real part)	53.385151
Relative permittivity (imaginary part)	14.756100
Conductivity (S/m)	1.561277
Variation (%)	-0.540000

SURFACE SAR

VOLUME SAR

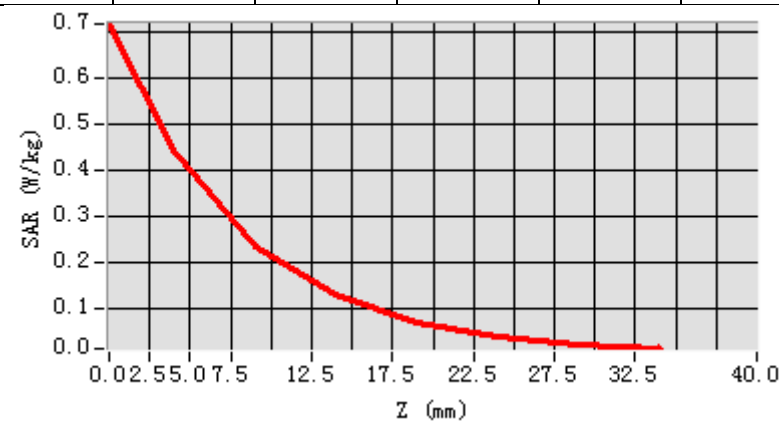


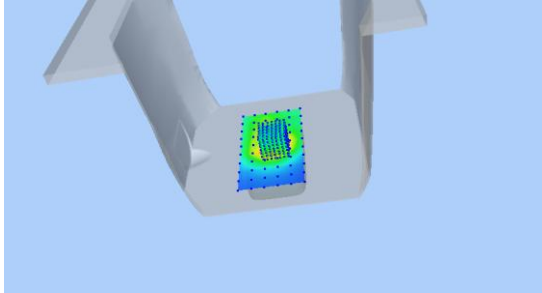
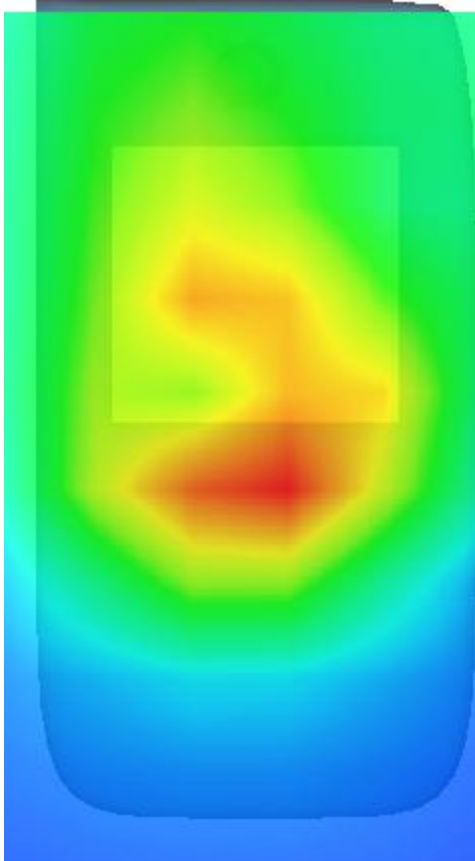
Maximum location: X=3.00, Y=-11.00

SAR Peak: 0.71 W/kg

SAR 10g (W/Kg)	0.213642
SAR 1g (W/Kg)	0.419723

Z (mm)	0.00	4.00	9.00	14.00	19.00	24.00	29.00
SAR (W/Kg)	0.7163	0.4429	0.2339	0.1271	0.0686	0.0375	0.0207



3D screen shot	Hot spot position
	

MEASUREMENT 13

20M-1RB#99

Type: Phone measurement (Complete)

Date of measurement: 16/6/2017

Measurement duration: 10 minutes 10 seconds

A. Experimental conditions.

<u>Area Scan</u>	<u>dx=15mm dy=15mm</u>
<u>ZoomScan</u>	<u>5x5x7,dx=8mm dy=8mm dz=5mm,Complete</u>
<u>Phantom</u>	<u>Left head</u>
<u>Device Position</u>	<u>Cheek</u>
<u>Band</u>	<u>LTE band 4</u>
<u>Channels</u>	<u>High</u>
<u>Signal</u>	<u>Duty cycle:1:1</u>
<u>Conversion factor</u>	<u>4.01</u>

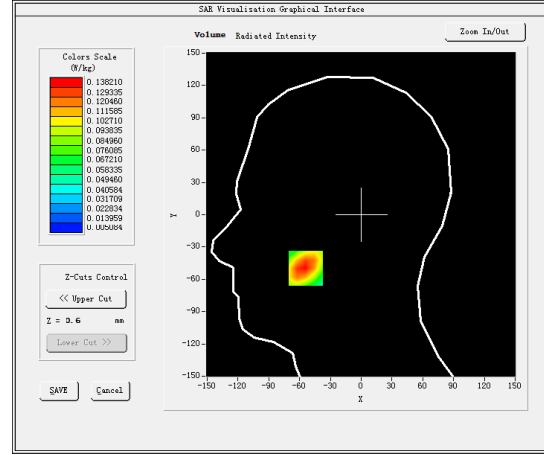
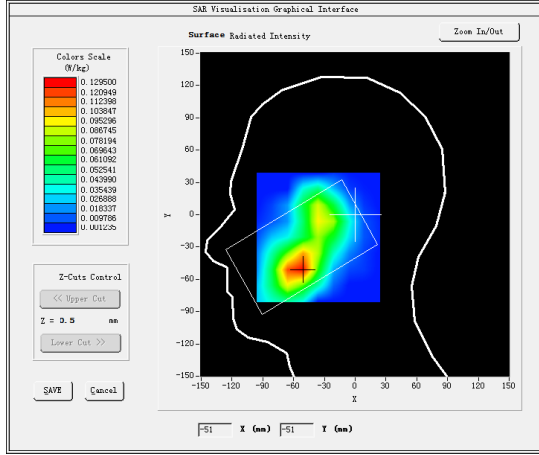
B. SAR Measurement Results

Higher Band SAR (Channel 20300):

Frequency (MHz)	1745.000000
Relative permittivity (real part)	40.175499
Relative permittivity (imaginary part)	14.048900
Conductivity (S/m)	1.365475
Variation (%)	0.150000

SURFACE SAR

VOLUME SAR

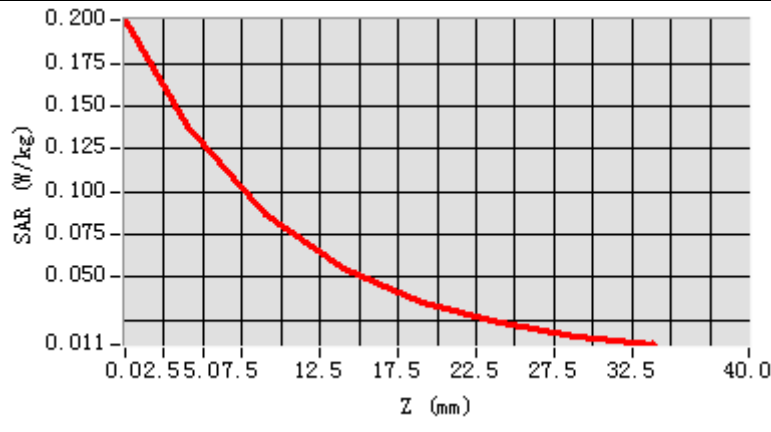


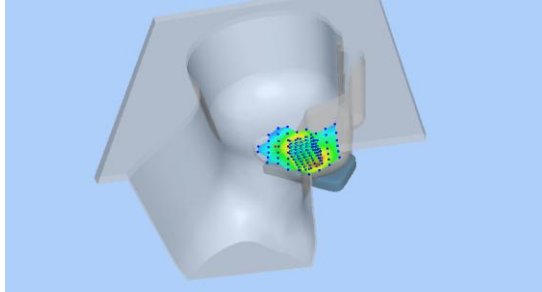
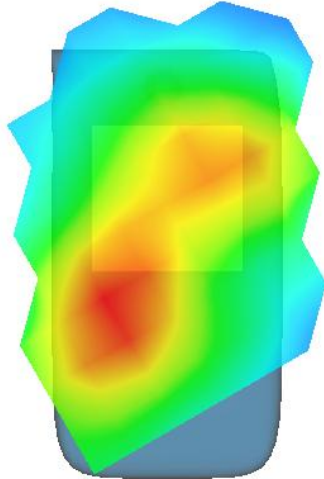
Maximum location: X=-54.00, Y=-50.00

SAR Peak: 0.20 W/kg

SAR 10g (W/Kg)	0.078857
SAR 1g (W/Kg)	0.132353

Z (mm)	0.00	4.00	9.00	14.00	19.00	24.00	29.00
SAR (W/Kg)	0.2001	0.1382	0.0863	0.0551	0.0353	0.0236	0.0158



3D screen shot	Hot spot position
	

MEASUREMENT 14

Left-side-20M-1RB#99-high

Type: Phone measurement (Complete)

Date of measurement: 16/6/2017

Measurement duration: 9 minutes 47 seconds

A. Experimental conditions.

<u>Area Scan</u>	<u>dx=15mm dy=15mm</u>
<u>ZoomScan</u>	<u>5x5x7,dx=8mm dy=8mm dz=5mm,Complete</u>
<u>Phantom</u>	<u>Validation plane</u>
<u>Device Position</u>	<u>Body</u>
<u>Band</u>	<u>LTE band 4</u>
<u>Channels</u>	<u>High</u>
<u>Signal</u>	<u>Duty cycle:1:1</u>
<u>Conversion factor</u>	<u>4.16</u>

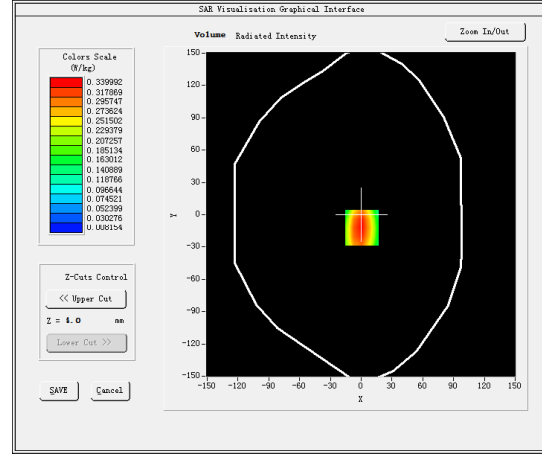
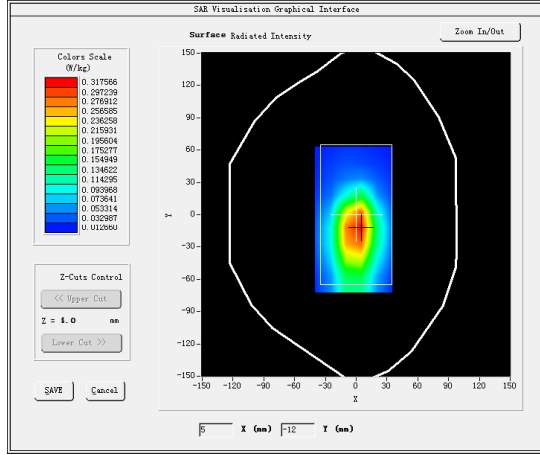
B. SAR Measurement Results

Higher Band SAR (Channel 20300):

Frequency (MHz)	1745.00000
Relative permittivity (real part)	53.211948
Relative permittivity (imaginary part)	15.353750
Conductivity (S/m)	1.492299
Variation (%)	-2.110000

SURFACE SAR

VOLUME SAR

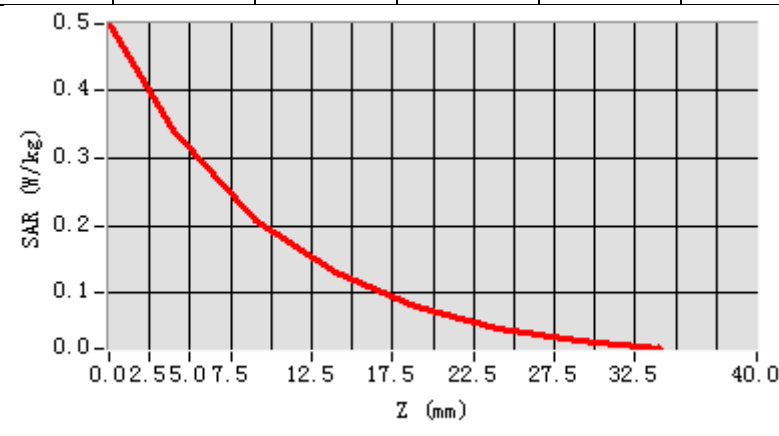


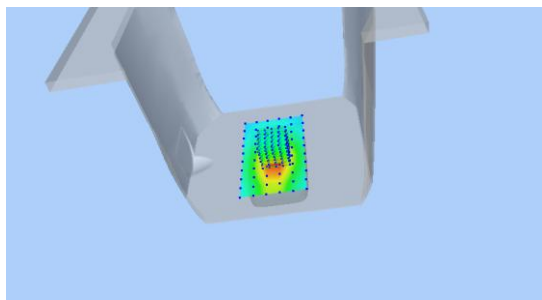
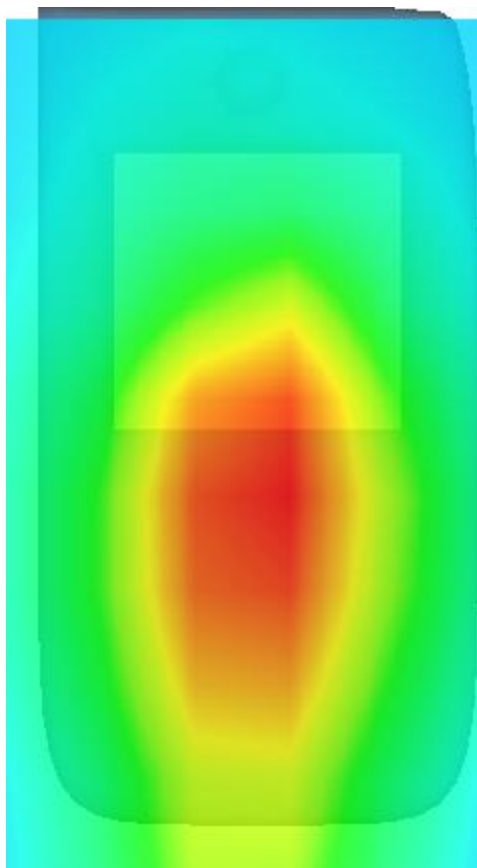
Maximum location: X=1.00, Y=-12.00

SAR Peak: 0.50 W/kg

SAR 10g (W/Kg)	0.191647
SAR 1g (W/Kg)	0.327568

Z (mm)	0.00	4.00	9.00	14.00	19.00	24.00	29.00
SAR (W/Kg)	0.4973	0.3400	0.2082	0.1298	0.0796	0.0486	0.0299



3D screen shot	Hot spot position
	

MEASUREMENT 15

20M-1RB#99

Type: Phone measurement (Complete)

Date of measurement: 21/6/2017

Measurement duration: 12 minutes 2 seconds

A. Experimental conditions.

<u>Area Scan</u>	<u>dx=8mm dy=8mm</u>
<u>ZoomScan</u>	<u>7x7x7,dx=5mm dy=5mm dz=5mm,Complete</u>
<u>Phantom</u>	<u>Right head</u>
<u>Device Position</u>	<u>Cheek</u>
<u>Band</u>	<u>LTE band 7</u>
<u>Channels</u>	<u>Middle</u>
<u>Signal</u>	<u>Duty cycle:1:1</u>
<u>Conversion factor</u>	<u>3.92</u>

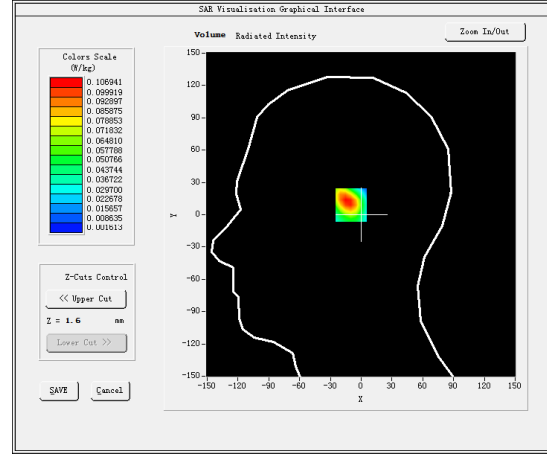
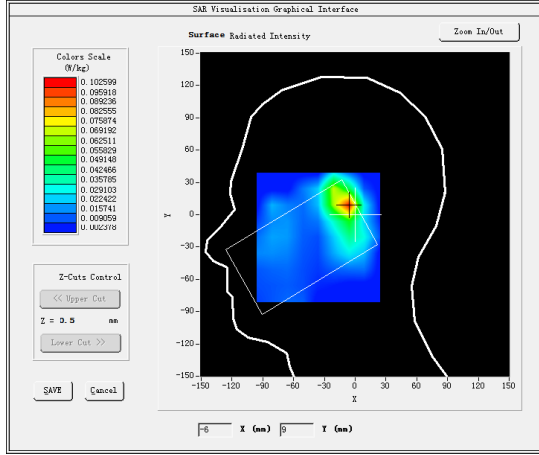
B. SAR Measurement Results

Higher Band SAR (Channel 21100):

Frequency (MHz)	2535.00000
Relative permittivity (real part)	38.581601
Relative permittivity (imaginary part)	13.671136
Conductivity (S/m)	1.926239
Variation (%)	0.150000

SURFACE SAR

VOLUME SAR

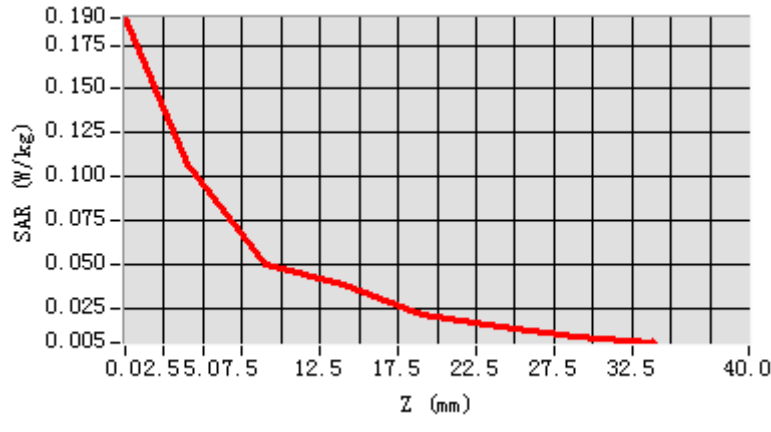


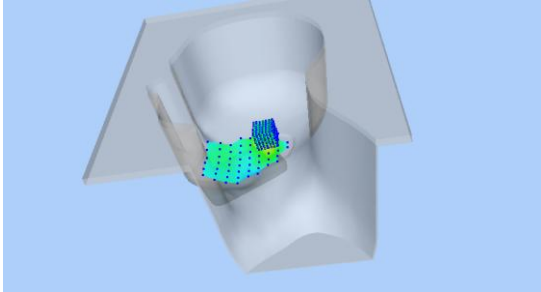
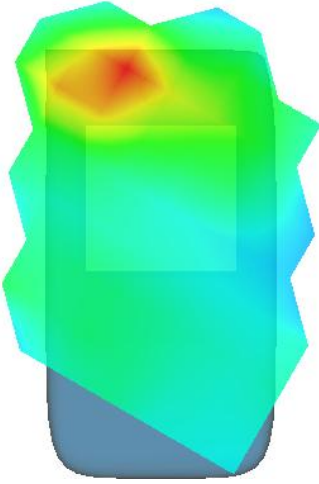
Maximum location: X=-7.00, Y=9.00

SAR Peak: 0.16 W/kg

SAR 10g (W/Kg)	0.031818
SAR 1g (W/Kg)	0.102517

Z (mm)	0.00	4.00	9.00	14.00	19.00	24.00	29.00
SAR (W/Kg)	0.1905	0.1069	0.0503	0.0386	0.0211	0.0138	0.0081



3D screen shot	Hot spot position
	

MEASUREMENT 16

Front-side-20M-1RB#99-middle

Type: Phone measurement (Complete)

Date of measurement: 21/6/2017

Measurement duration: 14 minutes 6 seconds

A. Experimental conditions.

<u>Area Scan</u>	<u>dx=8mm dy=8mm</u>
<u>ZoomScan</u>	<u>7x7x7,dx=5mm dy=5mm dz=5mm,Complete</u>
<u>Phantom</u>	<u>Validation plane</u>
<u>Device Position</u>	<u>Body</u>
<u>Band</u>	<u>LTE band 7</u>
<u>Channels</u>	<u>Middle</u>
<u>Signal</u>	<u>Duty cycle:1:1</u>
<u>Conversion factor</u>	<u>4.07</u>

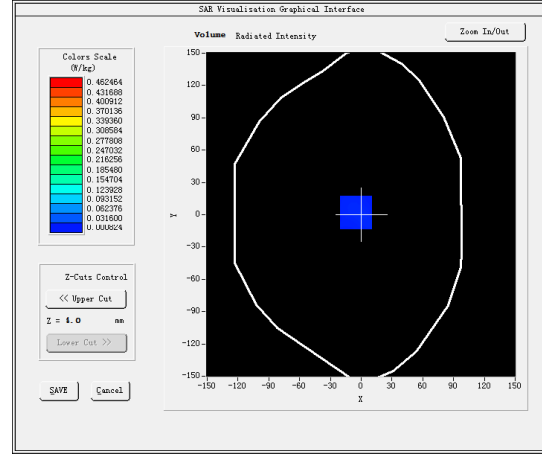
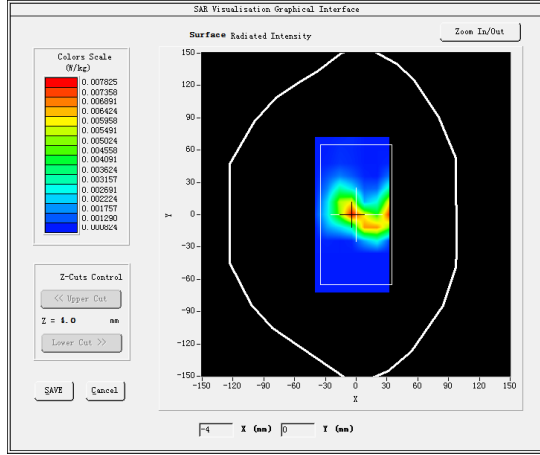
B. SAR Measurement Results

Middle Band SAR (Channel 21100):

Frequency (MHz)	2535.000000
Relative permittivity (real part)	52.211601
Relative permittivity (imaginary part)	14.458500
Conductivity (S/m)	2.036239
Variation (%)	1.080000

SURFACE SAR

VOLUME SAR

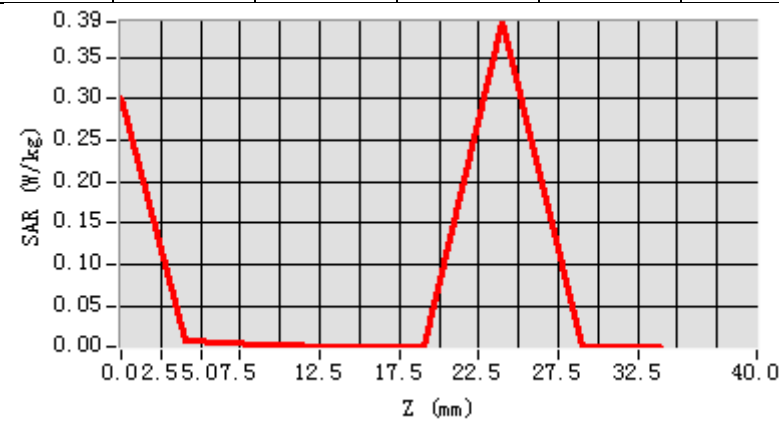


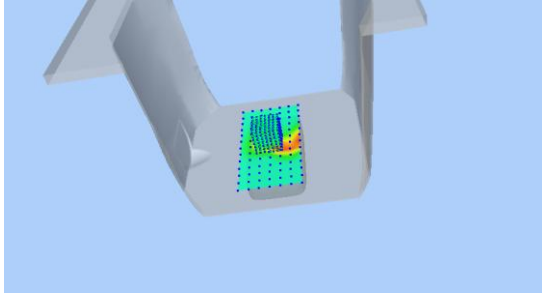
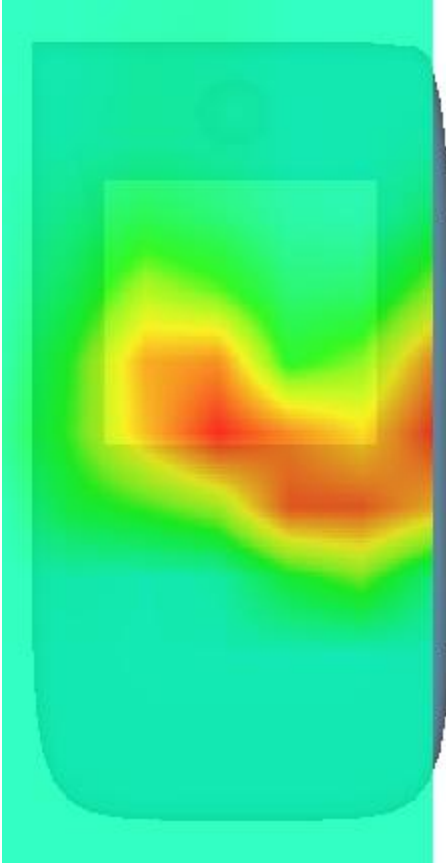
Maximum location: X=-5.00, Y=2.00

SAR Peak: 0.33 W/kg

SAR 10g (W/Kg)	0.027961
SAR 1g (W/Kg)	0.035864

Z (mm)	0.00	4.00	9.00	14.00	19.00	24.00	29.00
SAR (W/Kg)	0.3017	0.0083	0.0028	0.0010	0.0008	0.3932	0.0008



3D screen shot	Hot spot position
	

MEASUREMENT 17

Type: Phone measurement (Complete)

Date of measurement: 17/6/2017

Measurement duration: 12 minutes 50 seconds

A. Experimental conditions.

<u>Area Scan</u>	<u>dx=8mm dy=8mm</u>
<u>ZoomScan</u>	<u>7x7x7,dx=5mm dy=5mm dz=5mm,Complete</u>
<u>Phantom</u>	<u>Left head</u>
<u>Device Position</u>	<u>Cheek</u>
<u>Band</u>	<u>IEEE 802.11b ISM</u>
<u>Channels</u>	<u>Middle</u>
<u>Signal</u>	<u>Duty cycle:1:1</u>
<u>Conversion factor</u>	<u>4.00</u>

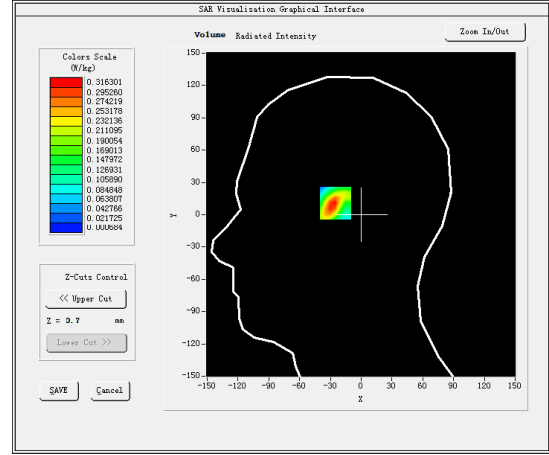
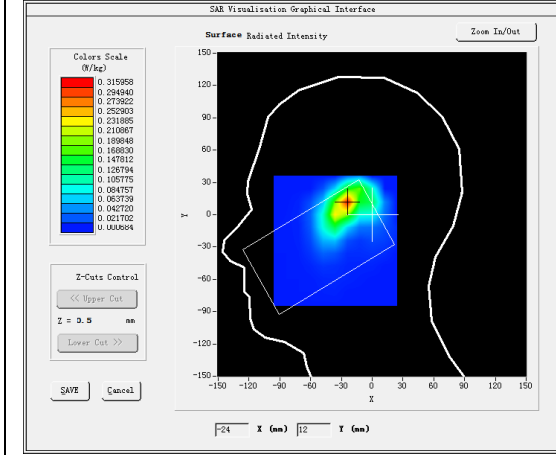
B. SAR Measurement Results

Middle Band SAR (Channel 6):

Frequency (MHz)	2437.000000
Relative permittivity (real part)	38.568100
Relative permittivity (imaginary part)	13.379800
Conductivity (S/m)	1.815193
Variation (%)	1.550000

SURFACE SAR

VOLUME SAR

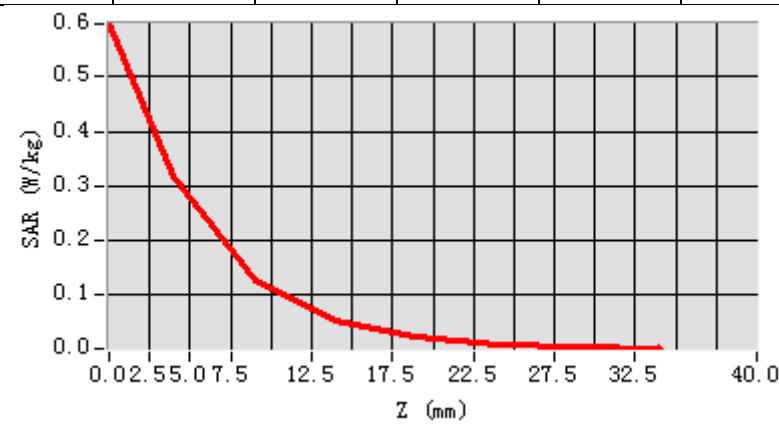


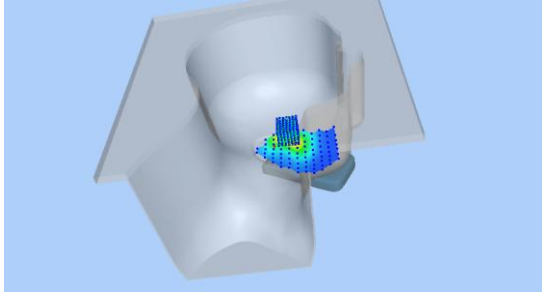
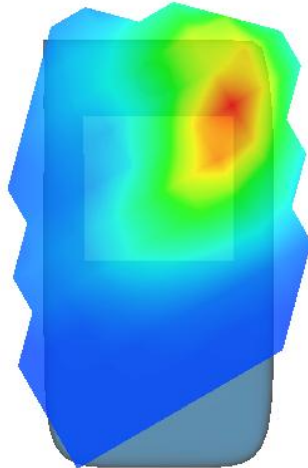
Maximum location: X=-24.00, Y=12.00

SAR Peak: 0.59 W/kg

SAR 10g (W/Kg)	0.128932
SAR 1g (W/Kg)	0.294636

Z (mm)	0.00	4.00	9.00	14.00	19.00	24.00	29.00
SAR (W/Kg)	0.5964	0.3163	0.1264	0.0544	0.0236	0.0106	0.0051



3D screen shot	Hot spot position
	

MEASUREMENT 18

Right-side-middle

Type: Phone measurement (Complete)

Date of measurement: 17/6/2017

Measurement duration: 15 minutes 43 seconds

A. Experimental conditions.

<u>Area Scan</u>	<u>dx=8mm dy=8mm</u>
<u>ZoomScan</u>	<u>7x7x7,dx=5mm dy=5mm dz=5mm,Complete</u>
<u>Phantom</u>	<u>Validation plane</u>
<u>Device Position</u>	<u>Body</u>
<u>Band</u>	<u>IEEE 802.11b ISM</u>
<u>Channels</u>	<u>Middle</u>
<u>Signal</u>	<u>Duty cycle:1:1</u>
<u>Conversion factor</u>	<u>4.11</u>

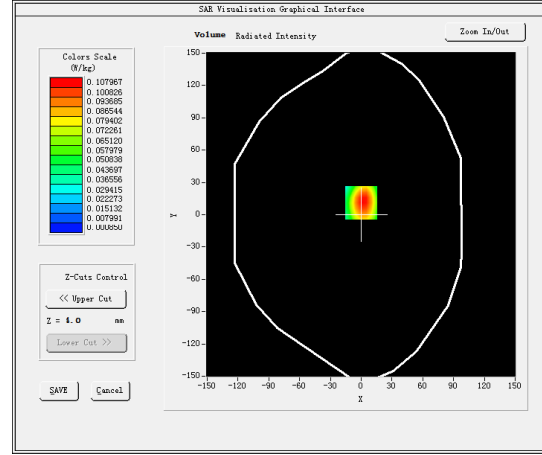
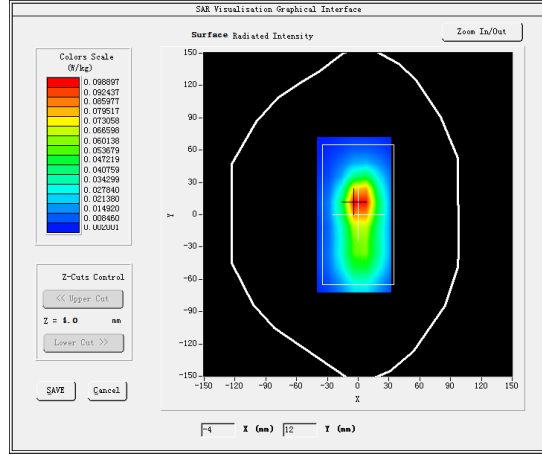
B. SAR Measurement Results

Middle Band SAR (Channel 6):

Frequency (MHz)	2437.000000
Relative permittivity (real part)	52.756401
Relative permittivity (imaginary part)	14.076200
Conductivity (S/m)	1.909671
Variation (%)	1.680000

SURFACE SAR

VOLUME SAR

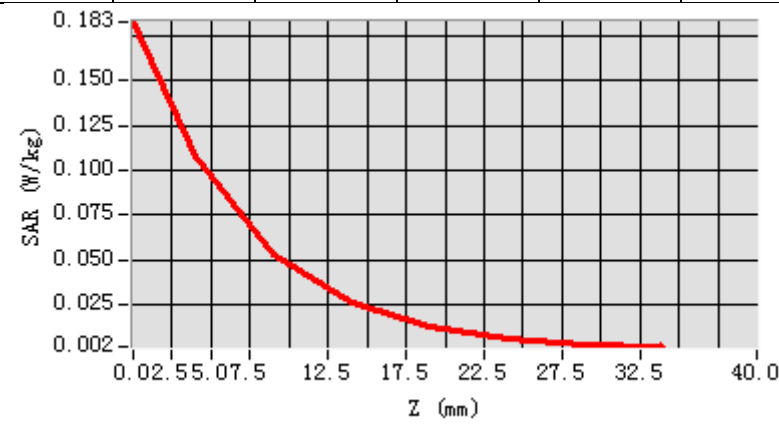


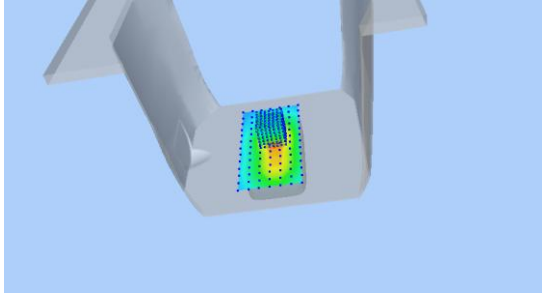
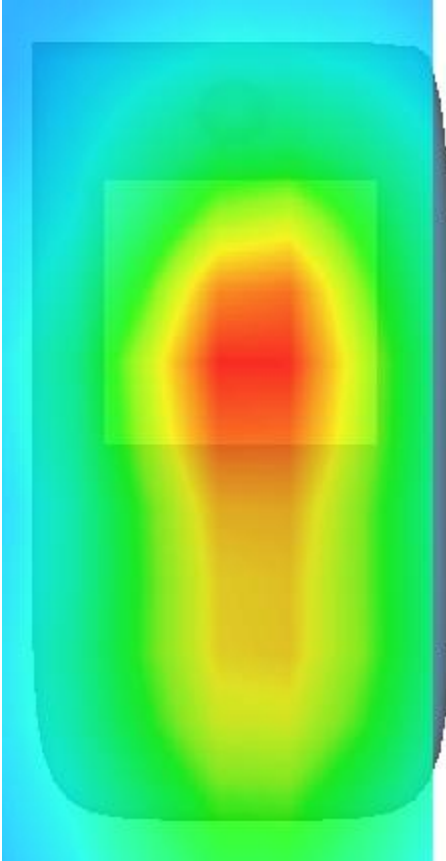
Maximum location: X=0.00, Y=11.00

SAR Peak: 0.18 W/kg

SAR 10g (W/Kg)	0.051614
SAR 1g (W/Kg)	0.103671

Z (mm)	0.00	4.00	9.00	14.00	19.00	24.00	29.00
SAR (W/Kg)	0.1826	0.1080	0.0529	0.0259	0.0130	0.0065	0.0032



3D screen shot	Hot spot position
	

MEASUREMENT 19

Type: Phone measurement (Complete)

Date of measurement: 17/6/2017

Measurement duration: 19 minutes 35 seconds

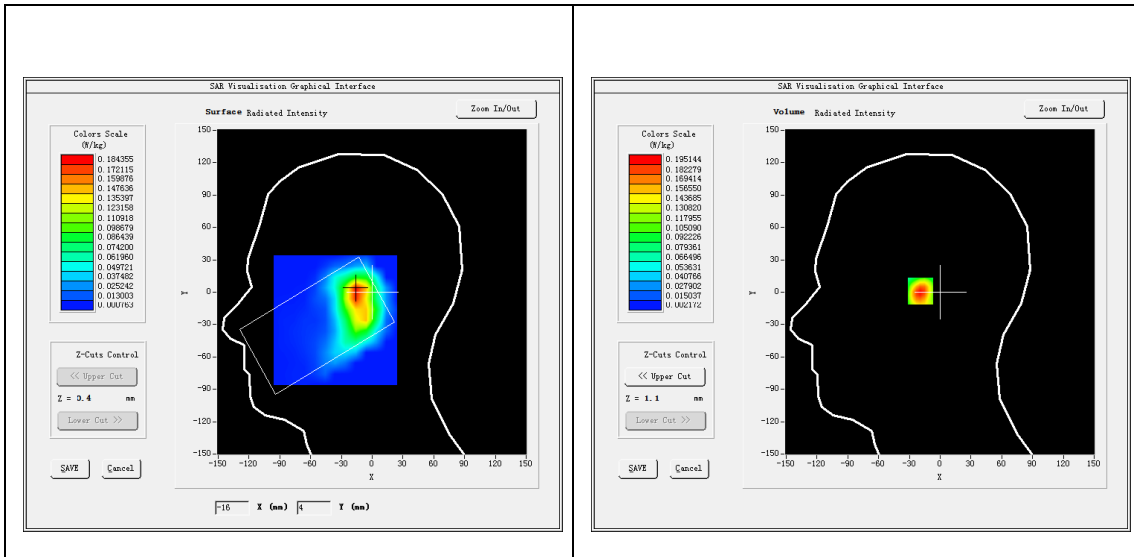
A. Experimental conditions.

<u>Area Scan</u>	<u>dx=10mm dy=10mm</u>
<u>ZoomScan</u>	<u>7x7x12,dx=4mm dy=4mm dz=2mm,Complete</u>
<u>Phantom</u>	<u>Right head</u>
<u>Device Position</u>	<u>Cheek</u>
<u>Band</u>	<u>IEEE 802.11a U-NII-1</u>
<u>Channels</u>	<u>High</u>
<u>Signal</u>	<u>Duty cycle:1:1</u>

B. SAR Measurement Results

High Band SAR (Channel 48):

Frequency (MHz)	5240.000000
Relative permittivity (real part)	35.619701
Relative permittivity (imaginary part)	15.467631
Conductivity (S/m)	4.495210
Variation (%)	-0.720000

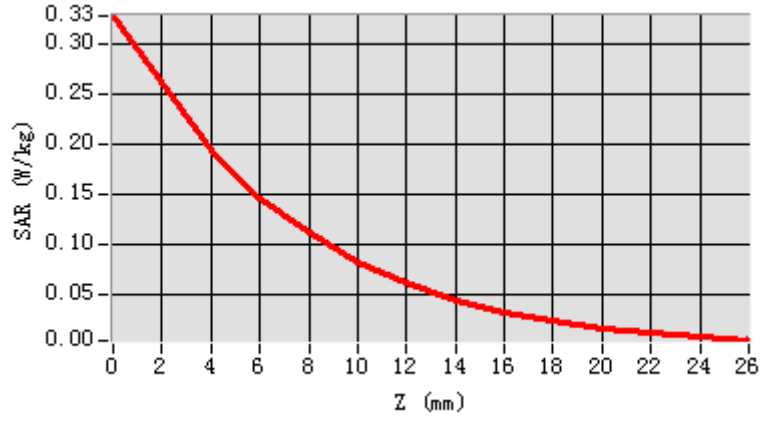


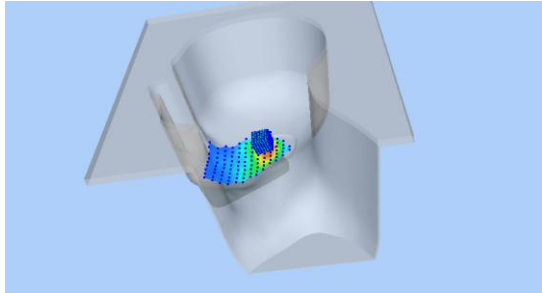
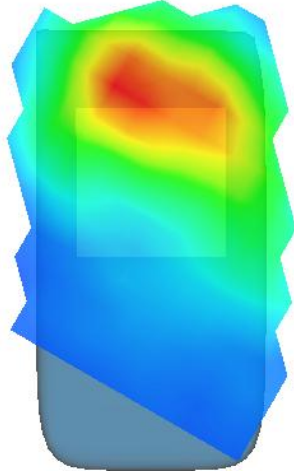
Maximum location: X=-15.00, Y=1.00

SAR Peak: 0.33 W/kg

SAR 10g (W/Kg)	0.085679
SAR 1g (W/Kg)	0.178221

Z (mm)	0.00	4.00	6.00	8.00	10.00	12.00	14.00	16.00	18.00	20.00	22.00	24.00
SAR (W/Kg)	0.3282	0.1951	0.1468	0.1115	0.0829	0.0616	0.0447	0.0321	0.0240	0.0170	0.0115	0.0075



3D screen shot	Hot spot position
	

MEASUREMENT 20

Type: Phone measurement (Complete)

Date of measurement: 17/6/2017

Measurement duration: 19 minutes 21 seconds

A. Experimental conditions.

<u>Area Scan</u>	<u>dx=10mm dy=10mm</u>
<u>ZoomScan</u>	<u>7x7x12,dx=4mm dy=4mm dz=2mm,Complete</u>
<u>Phantom</u>	<u>Right head</u>
<u>Device Position</u>	<u>Cheek</u>
<u>Band</u>	<u>IEEE 802.11a U-NII-3</u>
<u>Channels</u>	<u>High</u>
<u>Signal</u>	<u>Duty cycle:1:1</u>

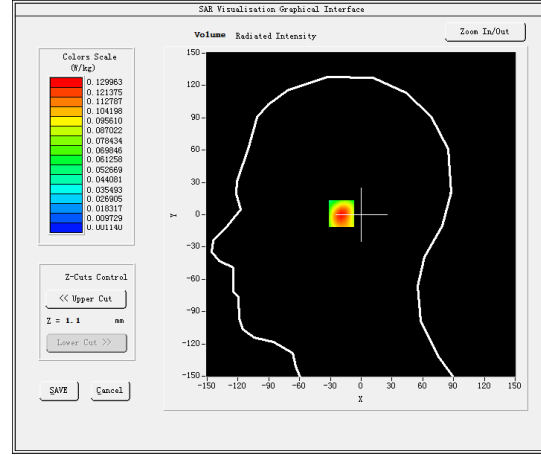
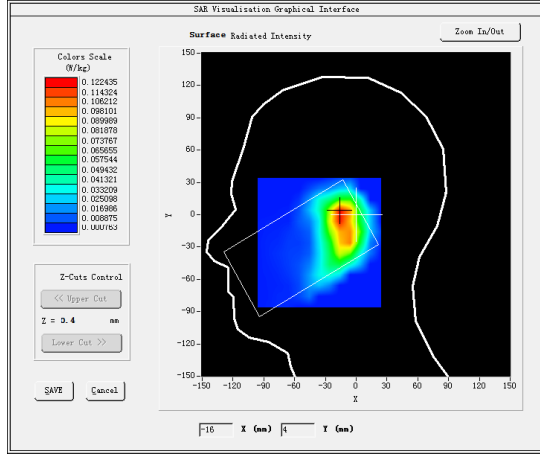
B. SAR Measurement Results

High Band SAR (Channel 165):

Frequency (MHz)	5825.000000
Relative permittivity (real part)	34.635521
Relative permittivity (imaginary part)	16.245435
Conductivity (S/m)	5.161300
Variation (%)	0.190000

SURFACE SAR

VOLUME SAR

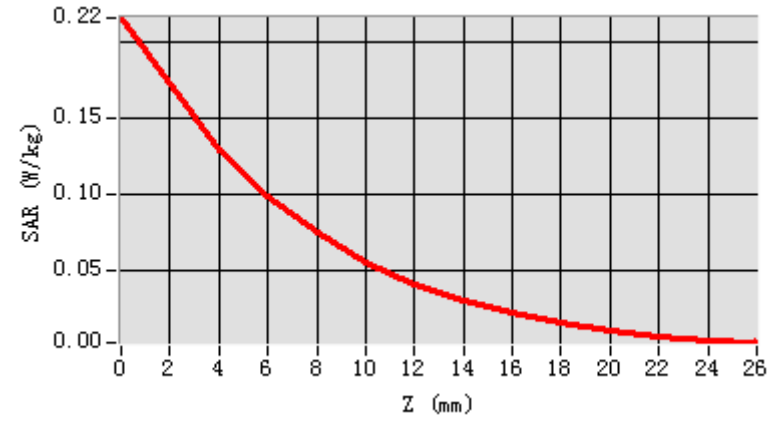


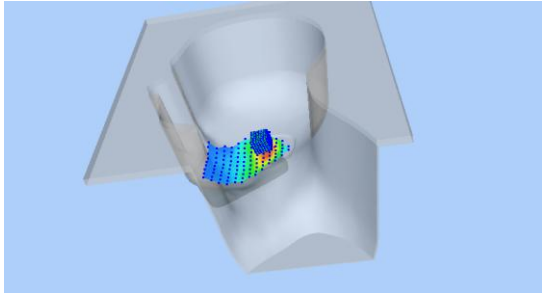
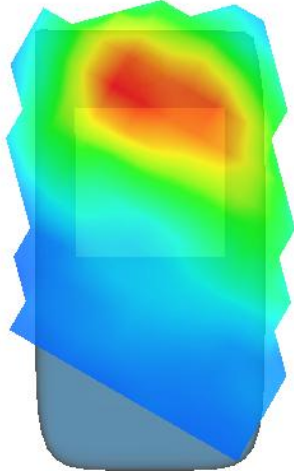
Maximum location: X=-15.00, Y=1.00

SAR Peak: 0.22 W/kg

SAR 10g (W/Kg)	0.059069
SAR 1g (W/Kg)	0.118929

Z (mm)	0.00	4.00	6.00	8.00	10.00	12.00	14.00	16.00	18.00	20.00	22.00	24.00
SAR (W/Kg)	0.2163	0.1300	0.0985	0.0754	0.0563	0.0417	0.0304	0.0223	0.0158	0.0109	0.0073	0.0046



3D screen shot	Hot spot position
	

MEASUREMENT 21

Rear-side- Low

Type: Phone measurement (Complete)

Date of measurement: 17/6/2017

Measurement duration: 18 minutes 58 seconds

A. Experimental conditions.

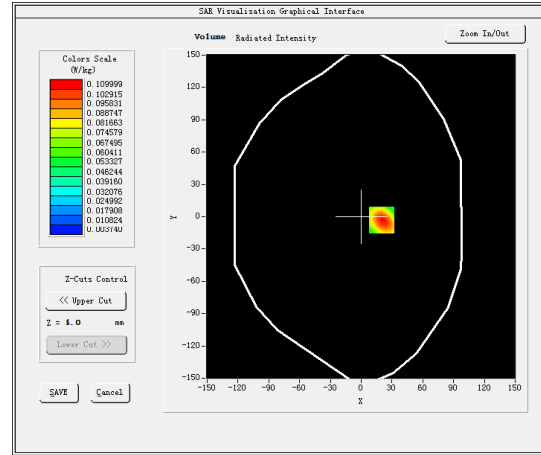
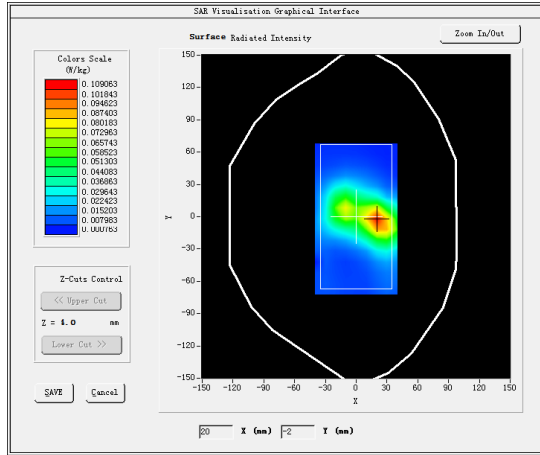
<u>Area Scan</u>	<u>dx=10mm dy=10mm</u>
<u>ZoomScan</u>	<u>7x7x12,dx=4mm dy=4mm dz=2mm,Complete</u>
<u>Phantom</u>	<u>Validation plane</u>
<u>Device Position</u>	<u>Body</u>
<u>Band</u>	<u>IEEE 802.11a U-NII-1</u>
<u>Channels</u>	<u>High</u>
<u>Signal</u>	<u>Duty cycle:1:1</u>

B. SAR Measurement Results

Frequency (MHz)	5240.000000
Relative permittivity (real part)	49.858526
Relative permittivity (imaginary part)	17.828438
Conductivity (S/m)	5.194532
Variation (%)	-1.350000

SURFACE SAR

VOLUME SAR

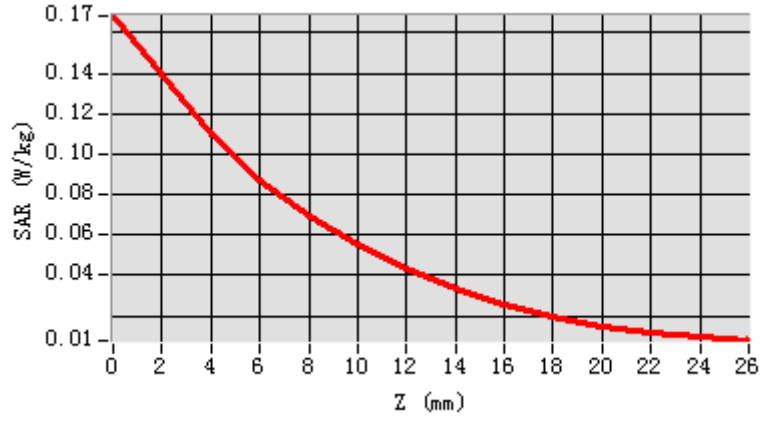


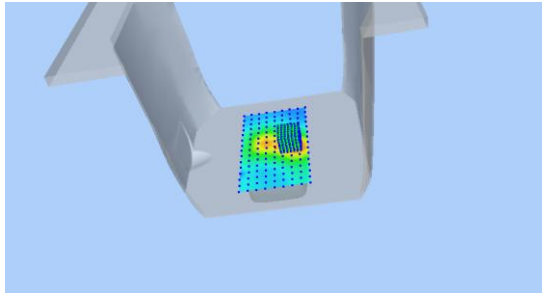
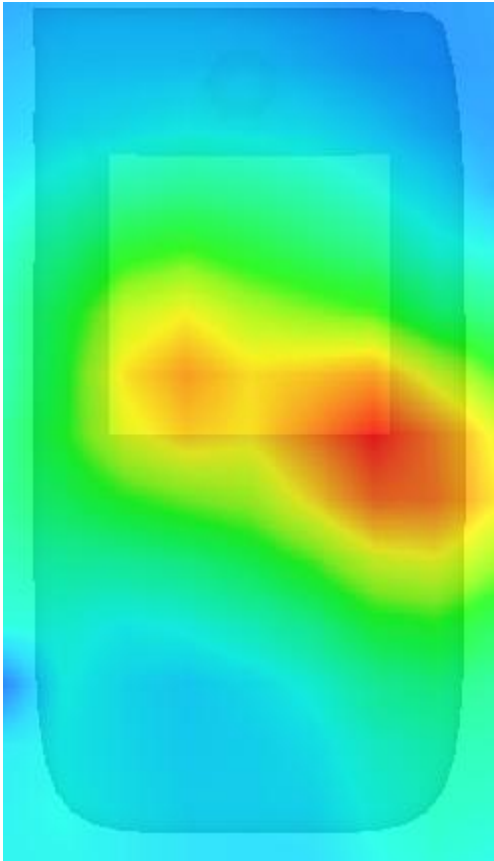
Maximum location: X=20.00, Y=-3.00

SAR Peak: 0.17 W/kg

SAR 10g (W/Kg)	0.053088
SAR 1g (W/Kg)	0.101319

Z (mm)	0.00	4.00	6.00	8.00	10.00	12.00	14.00	16.00	18.00	20.00	22.00	24.00
SAR (W/Kg)	0.1684	0.1100	0.0868	0.0695	0.0554	0.0437	0.0330	0.0260	0.0192	0.0146	0.0116	0.0097



3D screen shot	Hot spot position
	

MEASUREMENT 22

Rear-side- High

Type: Phone measurement (Complete)

Date of measurement: 17/6/2017

Measurement duration: 19 minutes 53 seconds

A. Experimental conditions.

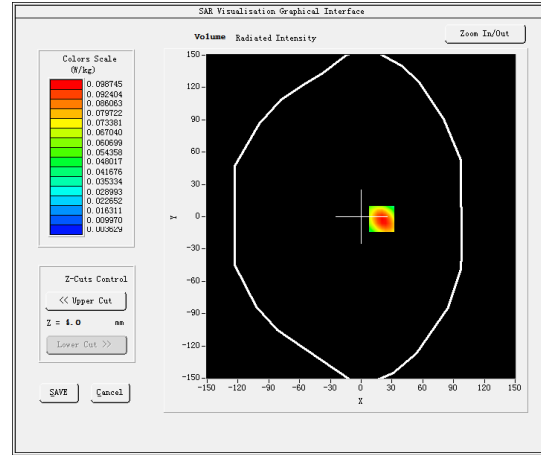
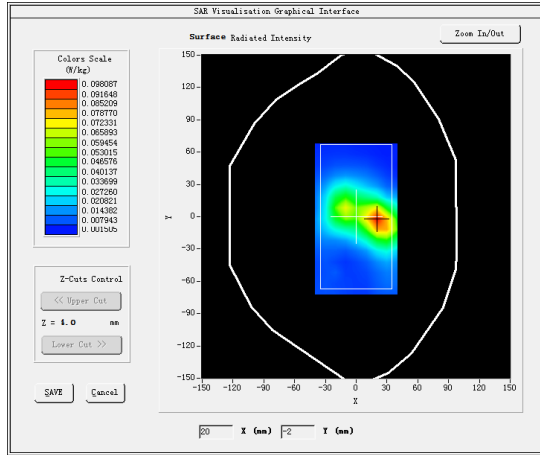
<u>Area Scan</u>	<u>dx=10mm dy=10mm</u>
<u>ZoomScan</u>	<u>7x7x12,dx=4mm dy=4mm dz=2mm,Complete</u>
<u>Phantom</u>	<u>Validation plane</u>
<u>Device Position</u>	<u>Body</u>
<u>Band</u>	<u>IEEE 802.11a U-NII-3</u>
<u>Channels</u>	<u>High</u>
<u>Signal</u>	<u>Duty cycle:1:1</u>

B. SAR Measurement Results

Frequency (MHz)	5825.000000
Relative permittivity (real part)	48.139400
Relative permittivity (imaginary part)	19.154900
Conductivity (S/m)	6.205808
Variation (%)	-2.310000

SURFACE SAR

VOLUME SAR

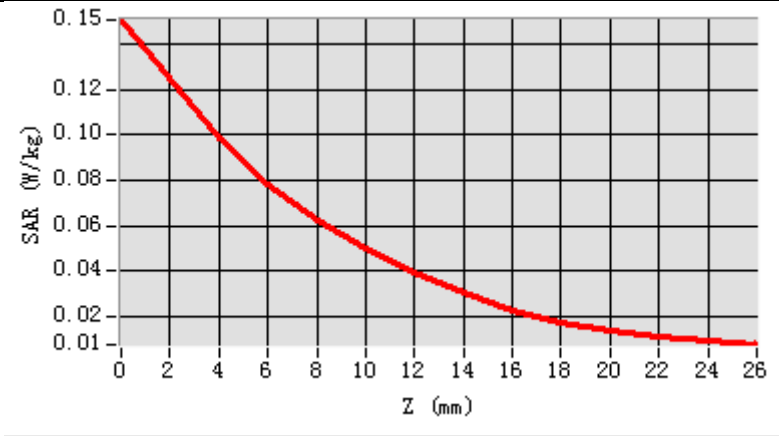


Maximum location: X=20.00, Y=-2.00

SAR Peak: 0.15 W/kg

SAR 10g (W/Kg)	0.048464
SAR 1g (W/Kg)	0.091564

Z (mm)	0.00	4.00	6.00	8.00	10.00	12.00	14.00	16.00	18.00	20.00	22.00	24.00
SAR (W/Kg)	0.1509	0.0987	0.0780	0.0622	0.0496	0.0390	0.0302	0.0227	0.0173	0.0137	0.0110	0.0089



3D screen shot	Hot spot position
