	<b>Annex B: Measurement Results</b>
	<b>Project Name : X521</b>
	<b>Report Number: WSCT-R&amp;E16053699A-SAR</b>

## I. RESULTS

<u>TYPE</u>	<u>BAND</u>	<u>PARAMETERS</u>
Phone	GSM850	<u>Measurement 1:</u> Left Head with Cheek device position on High Channel in GSM mode
Phone	Band5_WCDMA850	<u>Measurement 2:</u> Left Head with Cheek device position on Middle Channel in WCDMA mode
Phone	Band5_WCDMA850	<u>Measurement 3:</u> Validation Plane with Body device position on Middle Channel in WCDMA mode
Phone	IEEE 802.11b ISM	<u>Measurement 4:</u> Left Head with Cheek device position on Low Channel in --- mode
Phone	IEEE 802.11b ISM	<u>Measurement 5:</u> Validation Plane with Body device position on Middle Channel in --- mode
Phone	LTE band 4	<u>Measurement 6:</u> Left Head with Cheek device position on High Channel in --- mode
Phone	LTE band 4	<u>Measurement 7:</u> Validation Plane with Body device position on Low Channel in --- mode
Phone	CUSTOM	<u>Measurement 8:</u> Validation Plane with Body device position (band GPRS850_4Tx)
Phone	GSM1900	<u>Measurement 9:</u> Left Head with Cheek device position on High Channel in GSM mode
Phone	CUSTOM	<u>Measurement 10:</u> Validation Plane with Body device position (band GPRS1900_4Tx)
Phone	Band2_WCD	<u>Measurement 11:</u> Left Head with Cheek device

	<b>MA</b>	position on High Channel in WCDMA mode
<b>Phone</b>	<b>Band2_WCDMA</b>	<u>Measurement 12</u> : Validation Plane with Body device position on High Channel in WCDMA mode
<b>Phone</b>	<b>Band4_WCDMA</b>	<u>Measurement 13</u> : Left Head with Cheek device position on High Channel in WCDMA mode
<b>Phone</b>	<b>Band4_WCDMA</b>	<u>Measurement 14</u> : Validation Plane with Body device position on Middle Channel in WCDMA mode
<b>Phone</b>	<b>LTE band 2</b>	<u>Measurement 15</u> : Left Head with Cheek device position on High Channel in --- mode
<b>Phone</b>	<b>LTE band 2</b>	<u>Measurement 16</u> : Validation Plane with Body device position on Low Channel in --- mode
<b>Phone</b>	<b>LTE band 7</b>	<u>Measurement 17</u> : Left Head with Cheek device position on High Channel in --- mode
<b>Phone</b>	<b>LTE band 7</b>	<u>Measurement 18</u> : Validation Plane with Body device position on Low Channel in --- mode
<b>Phone</b>	<b>LTE band 20</b>	<u>Measurement 19</u> : Left Head with Cheek device position on High Channel in --- mode
<b>Phone</b>	<b>LTE band 20</b>	<u>Measurement 20</u> : Validation Plane with Body device position on Low Channel in --- mode
<b>Phone</b>	<b>LTE band 28</b>	<u>Measurement 21</u> : Left Head with Cheek device position on High Channel in --- mode
<b>Phone</b>	<b>LTE band 28</b>	<u>Measurement 22</u> : Validation Plane with Body device position on Low Channel in --- mode

## MEASUREMENT 1

SIM2

Type: Phone measurement (Complete)

Date of measurement: 17/6/2016

Measurement duration: 14 minutes 14 seconds

### A. Experimental conditions.

<u>Area Scan</u>	<u>dx=12mm dy=12mm</u>
<u>ZoomScan</u>	<u>7x7x7, dx=5mm dy=5mm</u> <u>dz=5mm, Complete</u>
<u>Phantom</u>	<u>Left head</u>
<u>Device Position</u>	<u>Cheek</u>
<u>Band</u>	<u>GSM850</u>
<u>Channels</u>	<u>High</u>
<u>Signal</u>	<u>TDMA (Crest factor: 8.0)</u>

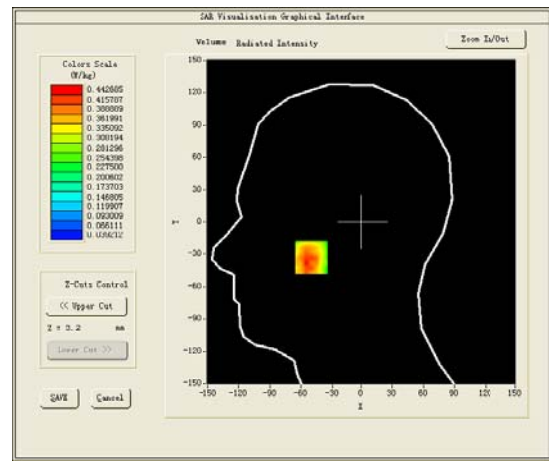
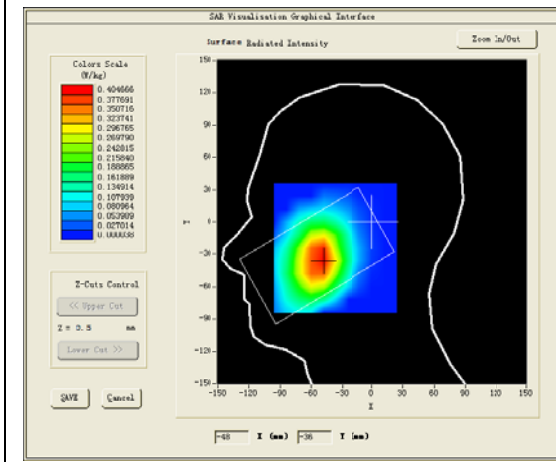
### B. SAR Measurement Results

Higher Band SAR (Channel 251):

<b>Frequency (MHz)</b>	848.799988
<b>Relative permittivity (real part)</b>	41.398041
<b>Relative permittivity (imaginary part)</b>	19.569880
<b>Conductivity (S/m)</b>	0.922829
<b>Variation (%)</b>	-2.880000

### SURFACE SAR

### VOLUME SAR

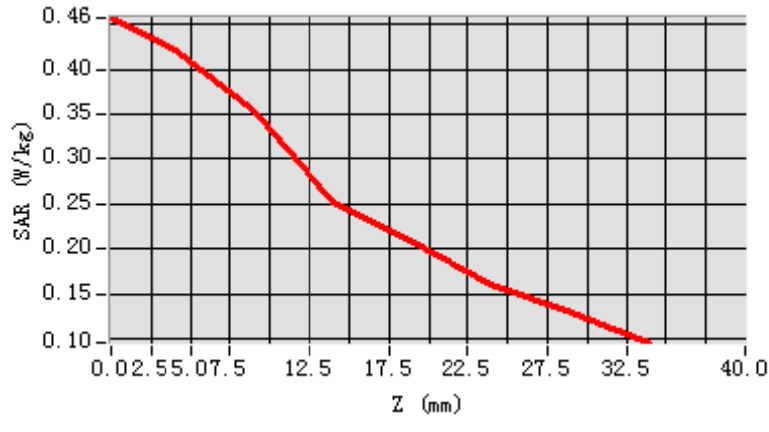


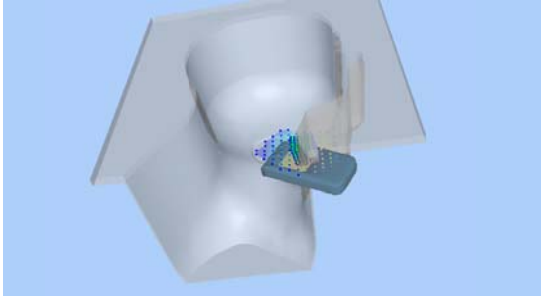
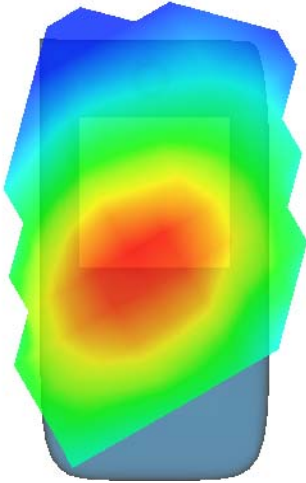
**Maximum location: X=-50.00, Y=-33.00**

**SAR Peak: 0.61 W/kg**

<b>SAR 10g (W/Kg)</b>	0.296209
<b>SAR 1g (W/Kg)</b>	0.407393

Z (mm)	0.00	4.00	9.00	14.00	19.00	24.00	29.00
SAR (W/Kg)	0.4569	0.4211	0.3540	0.2519	0.2075	0.1607	0.1286



3D screen shot	Hot spot position
	

## MEASUREMENT 2

Type: Phone measurement (Complete)

Date of measurement: 17/6/2016

Measurement duration: 14 minutes 16 seconds

### A. Experimental conditions.

<u>Area Scan</u>	<u>dx=12mm dy=12mm</u>
<u>ZoomScan</u>	<u>7x7x7, dx=5mm dy=5mm</u> <u>dz=5mm, Complete</u>
<u>Phantom</u>	<u>Left head</u>
<u>Device Position</u>	<u>Cheek</u>
<u>Band</u>	<u>Band5 WCDMA850</u>
<u>Channels</u>	<u>Middle</u>
<u>Signal</u>	<u>WCDMA (Crest factor: 1.0)</u>

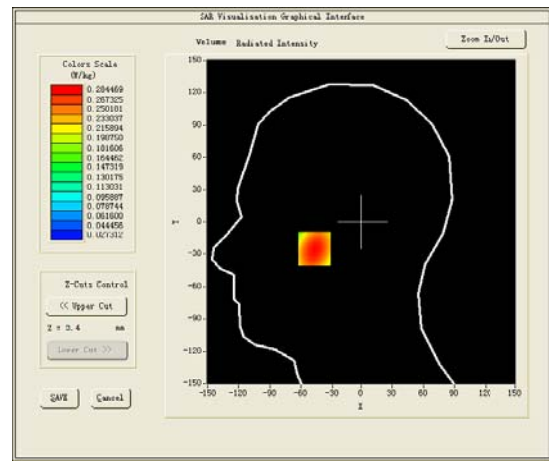
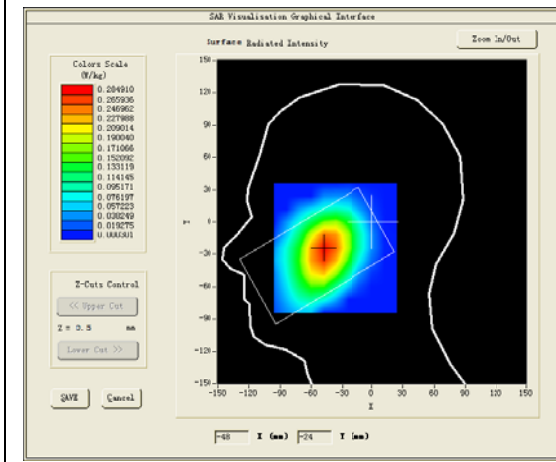
### B. SAR Measurement Results

Middle Band SAR (Channel 4182):

<b>Frequency (MHz)</b>	836.400024
<b>Relative permittivity (real part)</b>	41.515800
<b>Relative permittivity (imaginary part)</b>	19.488279
<b>Conductivity (S/m)</b>	0.905555
<b>Variation (%)</b>	1.900000

### SURFACE SAR

### VOLUME SAR

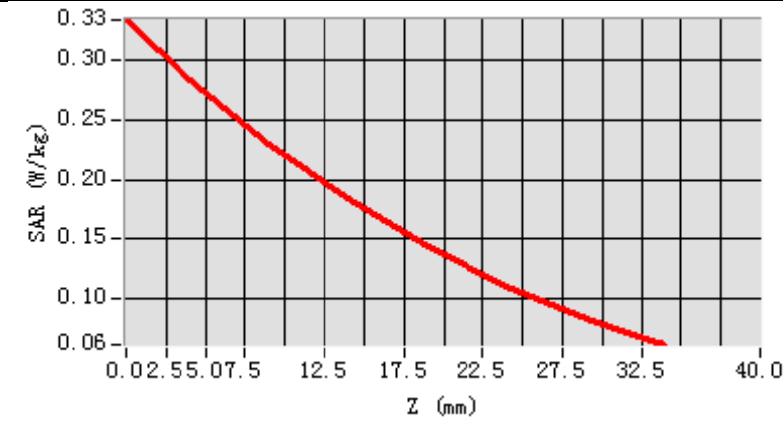


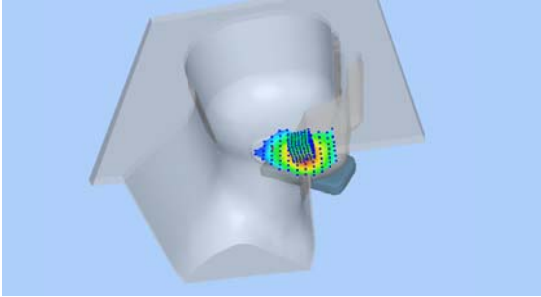
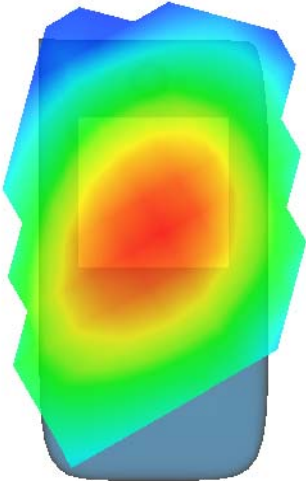
**Maximum location: X=-47.00, Y=-25.00**

**SAR Peak: 0.34 W/kg**

<b>SAR 10g (W/Kg)</b>	0.206624
<b>SAR 1g (W/Kg)</b>	0.274864

Z (mm)	0.00	4.00	9.00	14.00	19.00	24.00	29.00
SAR (W/Kg)	0.3345	0.2845	0.2299	0.1838	0.1438	0.1101	0.0826



3D screen shot	Hot spot position
	



## MEASUREMENT 3

Towards-phantom-middle

Type: Phone measurement (Complete)

Date of measurement: 17/6/2016

Measurement duration: 12 minutes 42 seconds

### A. Experimental conditions.

<u>Area Scan</u>	<u>dx=12mm dy=12mm</u>
<u>ZoomScan</u>	<u>7x7x7, dx=5mm dy=5mm dz=5mm, Complete</u>
<u>Phantom</u>	<u>Validation plane</u>
<u>Device Position</u>	<u>Body</u>
<u>Band</u>	<u>Band5_WCDMA850</u>
<u>Channels</u>	<u>Middle</u>
<u>Signal</u>	<u>WCDMA (Crest factor: 1.0)</u>

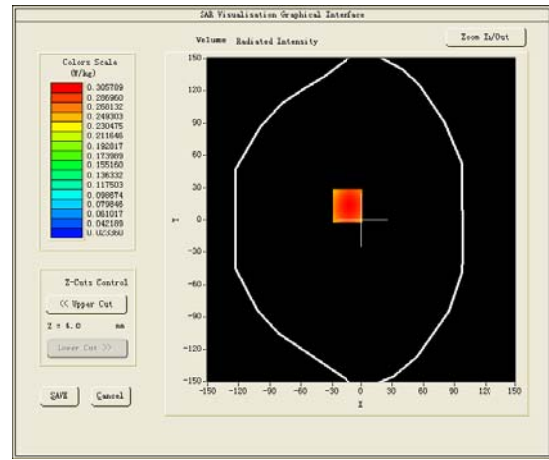
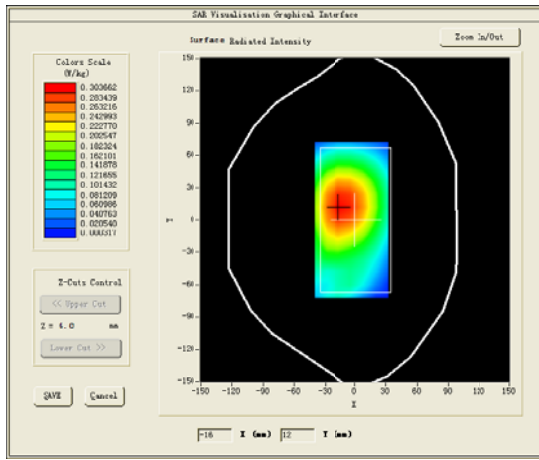
### B. SAR Measurement Results

Middle Band SAR (Channel 4182):

<b>Frequency (MHz)</b>	836.400024
<b>Relative permittivity (real part)</b>	55.265800
<b>Relative permittivity (imaginary part)</b>	20.888281
<b>Conductivity (S/m)</b>	0.970609
<b>Variation (%)</b>	0.110000

### SURFACE SAR

### VOLUME SAR

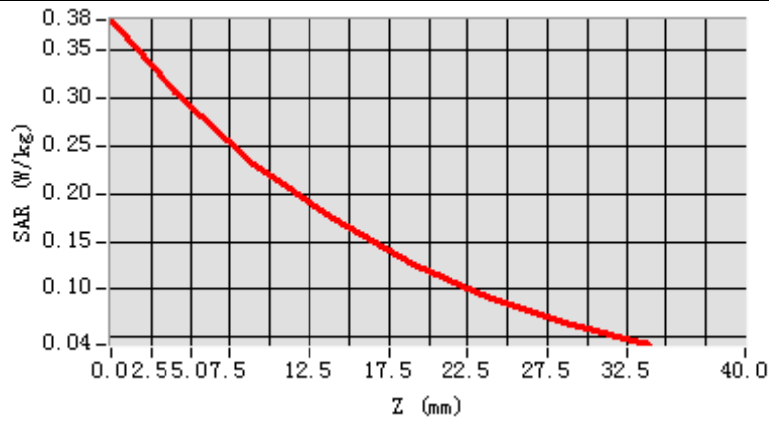


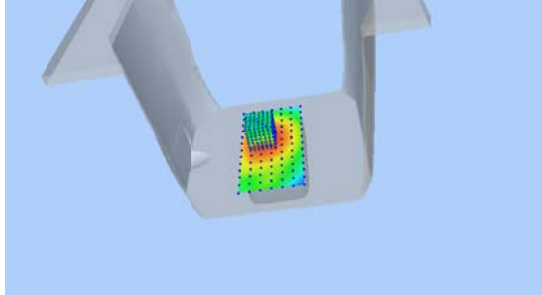
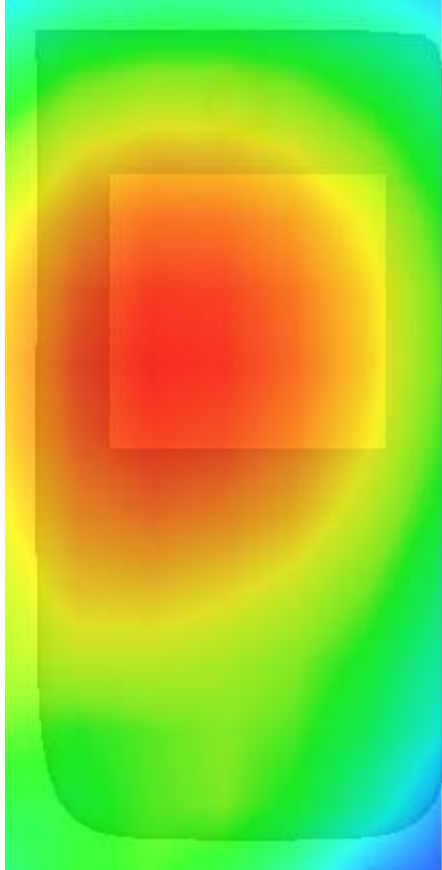
**Maximum location: X=-14.00, Y=13.00**

**SAR Peak: 0.38 W/kg**

<b>SAR 10g (W/Kg)</b>	0.214059
<b>SAR 1g (W/Kg)</b>	0.294658

Z (mm)	0.00	4.00	9.00	14.00	19.00	24.00	29.00
SAR (W/Kg)	0.3808	0.3058	0.2298	0.1733	0.1264	0.0907	0.0642



3D screen shot	Hot spot position
	

## MEASUREMENT 4

Type: Phone measurement (Complete)

Date of measurement: 20/6/2016

Measurement duration: 12 minutes 43 seconds

### A. Experimental conditions.

<u>Area Scan</u>	<u>dx=12mm dy=12mm</u>
<u>ZoomScan</u>	<u>7x7x7, dx=5mm dy=5mm</u> <u>dz=5mm, Complete</u>
<u>Phantom</u>	<u>Left head</u>
<u>Device Position</u>	<u>Cheek</u>
<u>Band</u>	<u>IEEE 802.11b ISM</u>
<u>Channels</u>	<u>Low</u>
<u>Signal</u>	<u>IEEE802.b (Crest factor: 1.0)</u>

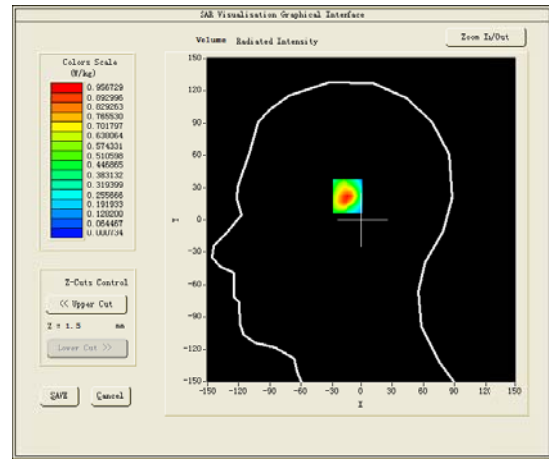
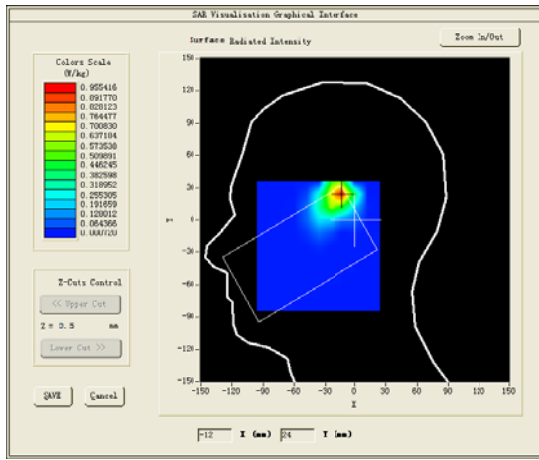
### B. SAR Measurement Results

Lower Band SAR (Channel 1):

<b>Frequency (MHz)</b>	2412.000000
<b>Relative permittivity (real part)</b>	39.491901
<b>Relative permittivity (imaginary part)</b>	13.176700
<b>Conductivity (S/m)</b>	1.765678
<b>Variation (%)</b>	-0.130000

### SURFACE SAR

### VOLUME SAR

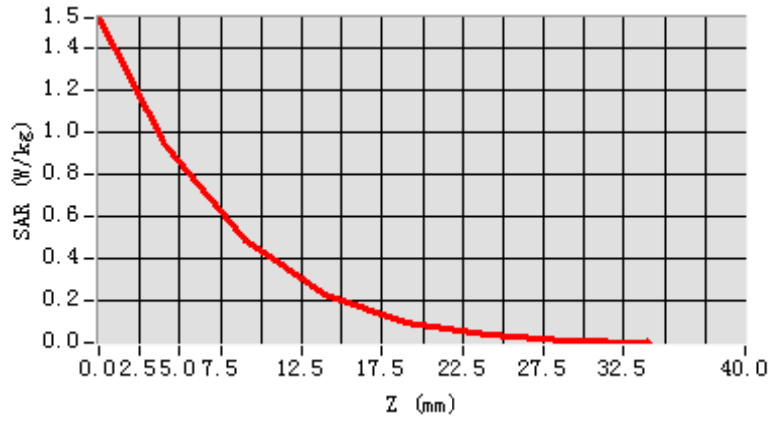


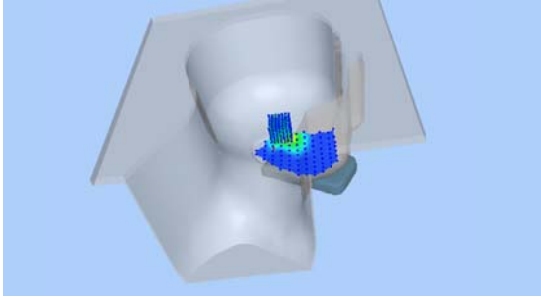
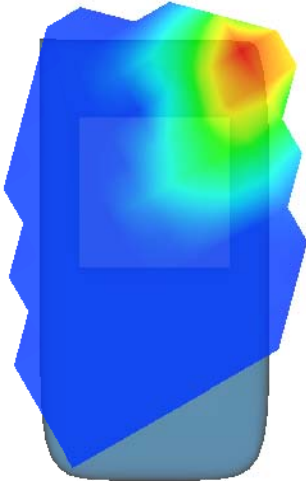
**Maximum location: X=-13.00, Y=24.00**

**SAR Peak: 1.57 W/kg**

<b>SAR 10g (W/Kg)</b>	0.399780
<b>SAR 1g (W/Kg)</b>	0.875633

Z (mm)	0.00	4.00	9.00	14.00	19.00	24.00	29.00
SAR (W/Kg)	1.5428	0.9567	0.4889	0.2245	0.0919	0.0342	0.0076



3D screen shot	Hot spot position
	

## MEASUREMENT 5

Towards-phantom-middle

Type: Phone measurement (Complete)

Date of measurement: 20/6/2016

Measurement duration: 18 minutes 5 seconds

### A. Experimental conditions.

<u>Area Scan</u>	<u>dx=12mm dy=12mm</u>
<u>ZoomScan</u>	<u>7x7x7, dx=5mm dy=5mm dz=5mm, Complete</u>
<u>Phantom</u>	<u>Validation plane</u>
<u>Device Position</u>	<u>Body</u>
<u>Band</u>	<u>IEEE 802.11b ISM</u>
<u>Channels</u>	<u>Middle</u>
<u>Signal</u>	<u>IEEE802.b (Crest factor: 1.0)</u>

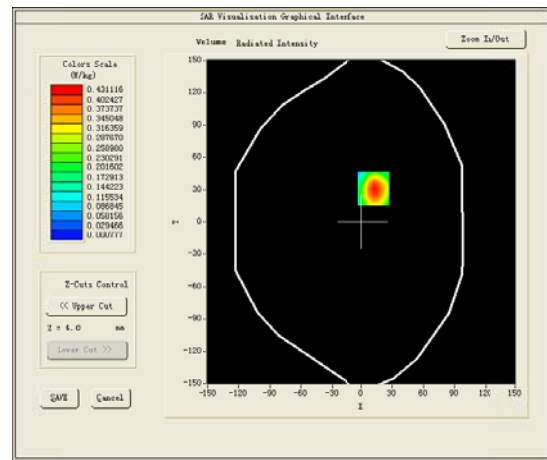
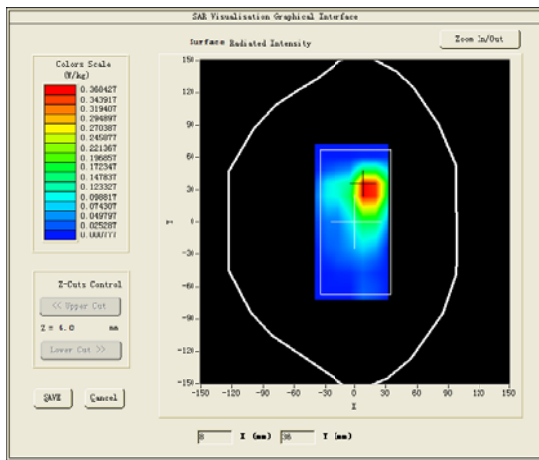
### B. SAR Measurement Results

Middle Band SAR (Channel 7):

<b>Frequency (MHz)</b>	2442.000000
<b>Relative permittivity (real part)</b>	52.771000
<b>Relative permittivity (imaginary part)</b>	14.380400
<b>Conductivity (S/m)</b>	1.950941
<b>Variation (%)</b>	-0.290000

### SURFACE SAR

### VOLUME SAR



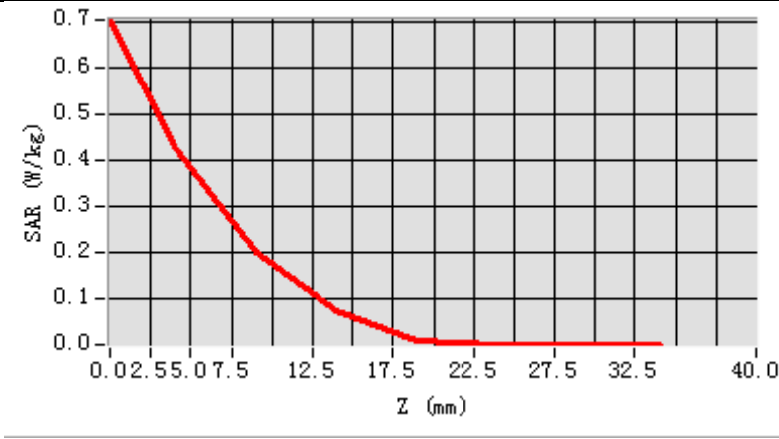
**Maximum location: X=12.00, Y=31.00**

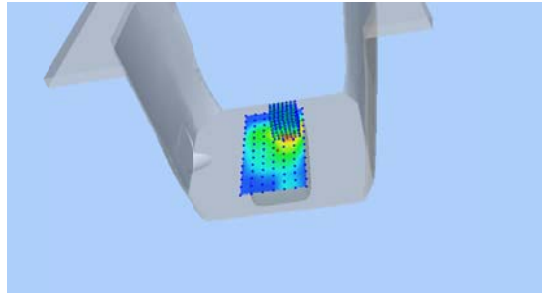
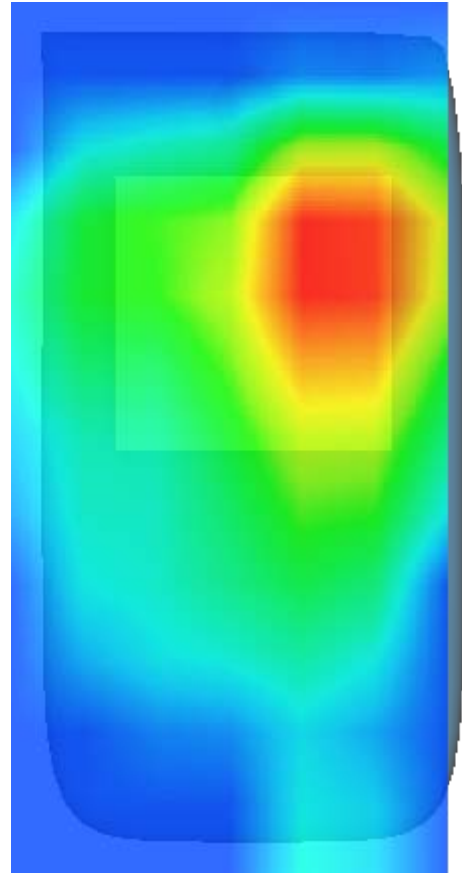
**SAR Peak: 0.77 W/kg**

<b>SAR 10g (W/Kg)</b>	0.194417
<b>SAR 1g (W/Kg)</b>	0.426143



Z (mm)	0.00	4.00	9.00	14.00	19.00	24.00	29.00
SAR (W/Kg)	0.7053	0.4311	0.2001	0.0732	0.0074	0.0008	0.0008



3D screen shot	Hot spot position
	

## MEASUREMENT 6

20M-1RB#50

Type: Phone measurement (Complete)

Date of measurement: 18/6/2016

Measurement duration: 15 minutes 49 seconds

### A. Experimental conditions.

<u>Area Scan</u>	<u>dx=12mm dy=12mm</u>
<u>ZoomScan</u>	<u>7x7x7, dx=5mm dy=5mm dz=5mm, Complete</u>
<u>Phantom</u>	<u>Left head</u>
<u>Device Position</u>	<u>Cheek</u>
<u>Band</u>	<u>LTE band 4</u>
<u>Channels</u>	<u>High</u>
<u>Signal</u>	<u>LTE (Crest factor: 1.0)</u>

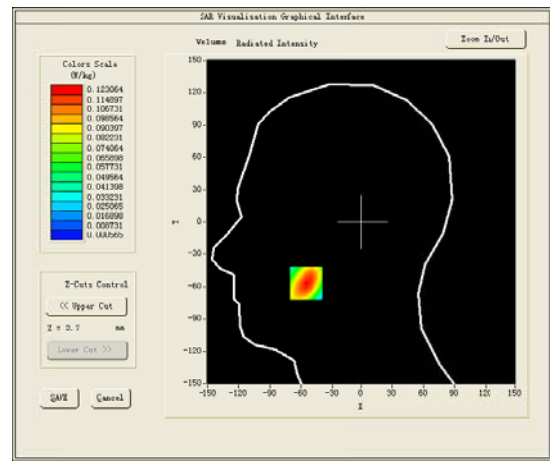
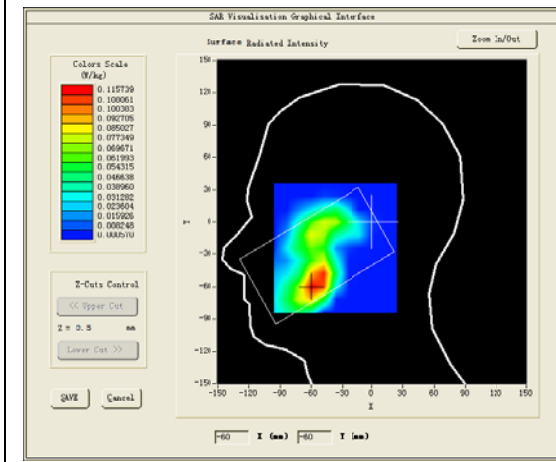
### B. SAR Measurement Results

Higher Band SAR (Channel 20350):

<b>Frequency (MHz)</b>	1749.500000
<b>Relative permittivity (real part)</b>	41.504749
<b>Relative permittivity (imaginary part)</b>	14.184750
<b>Conductivity (S/m)</b>	1.378679
<b>Variation (%)</b>	-3.630000

### SURFACE SAR

### VOLUME SAR

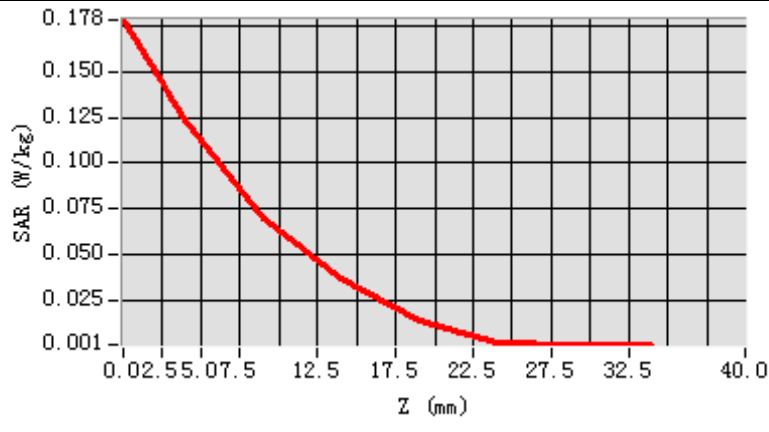


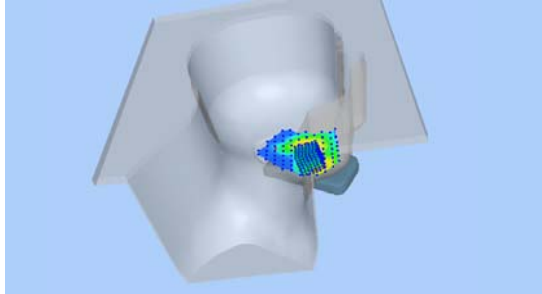
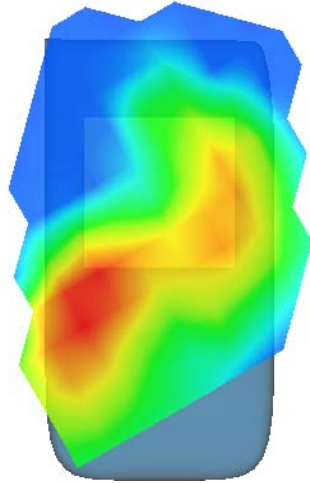
**Maximum location: X=-55.00, Y=-57.00**

**SAR Peak: 0.18 W/kg**

<b>SAR 10g (W/Kg)</b>	0.058562
<b>SAR 1g (W/Kg)</b>	0.112796

Z (mm)	0.00	4.00	9.00	14.00	19.00	24.00	29.00
SAR (W/Kg)	0.1784	0.1231	0.0695	0.0363	0.0133	0.0013	0.0006



3D screen shot	Hot spot position
	

## MEASUREMENT 7

Towards-ground-20M-1RB#50-low

Type: Phone measurement (Complete)

Date of measurement: 18/6/2016

Measurement duration: 15 minutes 4 seconds

### A. Experimental conditions.

<u>Area Scan</u>	<u>dx=12mm dy=12mm</u>
<u>ZoomScan</u>	<u>7x7x7, dx=5mm dy=5mm</u> <u>dz=5mm, Complete</u>
<u>Phantom</u>	<u>Validation plane</u>
<u>Device Position</u>	<u>Body</u>
<u>Band</u>	<u>LTE band 4</u>
<u>Channels</u>	<u>Low</u>
<u>Signal</u>	<u>LTE (Crest factor: 1.0)</u>

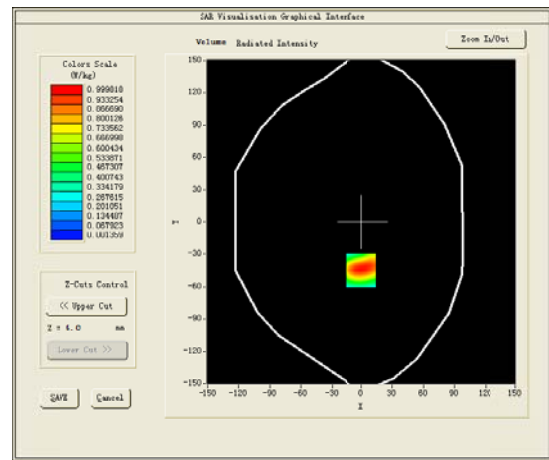
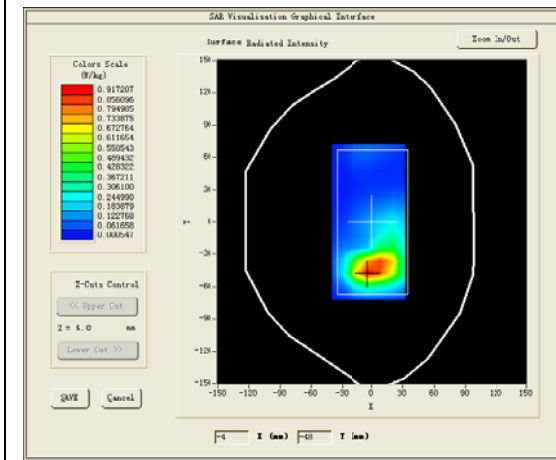
### B. SAR Measurement Results

Lower Band SAR (Channel 20000):

<b>Frequency (MHz)</b>	1714.500000
<b>Relative permittivity (real part)</b>	53.306198
<b>Relative permittivity (imaginary part)</b>	15.673700
<b>Conductivity (S/m)</b>	1.492920
<b>Variation (%)</b>	-0.430000

### SURFACE SAR

### VOLUME SAR

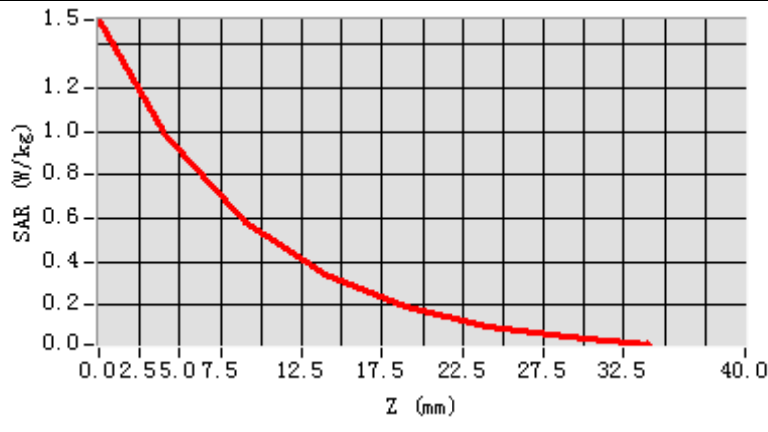


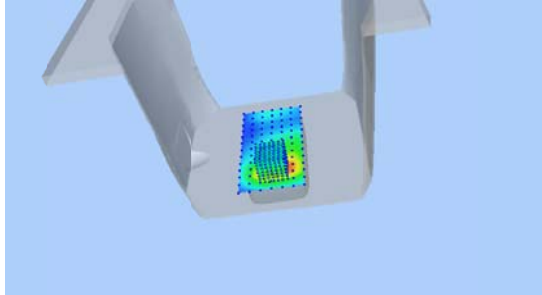
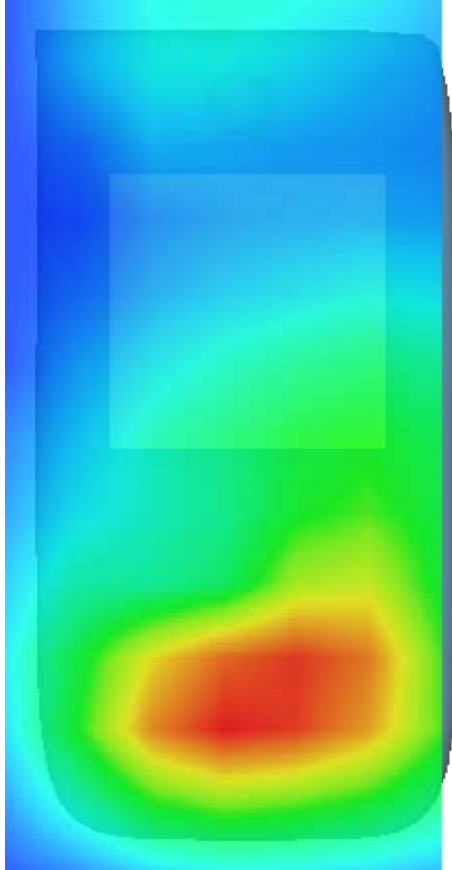
**Maximum location: X=-1.00, Y=-45.00**

**SAR Peak: 1.77 W/kg**

<b>SAR 10g (W/Kg)</b>	0.592818
<b>SAR 1g (W/Kg)</b>	1.101499

Z (mm)	0.00	4.00	9.00	14.00	19.00	24.00	29.00
SAR (W/Kg)	1.5131	0.9998	0.5818	0.3443	0.1951	0.1055	0.0513



3D screen shot	Hot spot position
	

## MEASUREMENT 8

Towards-phantom-high

Type: Phone measurement (Complete)

Date of measurement: 17/6/2016

Measurement duration: 10 minutes 42 seconds

### A. Experimental conditions.

<u>Area Scan</u>	<u>dx=12mm dy=12mm</u>
<u>ZoomScan</u>	<u>5x5x7, dx=8mm dy=8mm</u> <u>dz=5mm, Complete/ndx=12mm</u> <u>dy=12mm</u>
<u>Phantom</u>	<u>Validation plane</u>
<u>Device Position</u>	<u>Body</u>
<u>Band</u>	<u>CUSTOM (GPRS850_4Tx)</u>
<u>Channels</u>	<u>High</u>
<u>Signal</u>	<u>Duty Cycle: 2.00 (Crest factor: 2.0)</u>

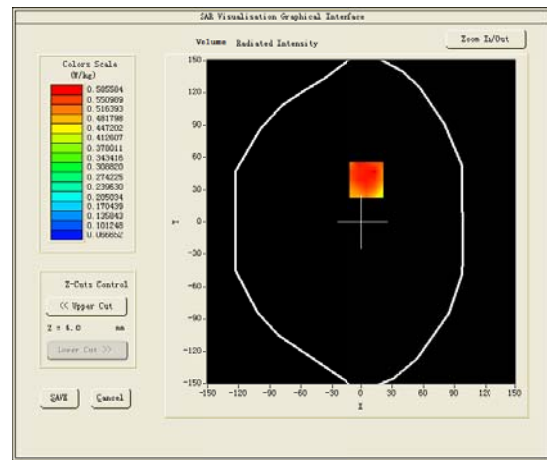
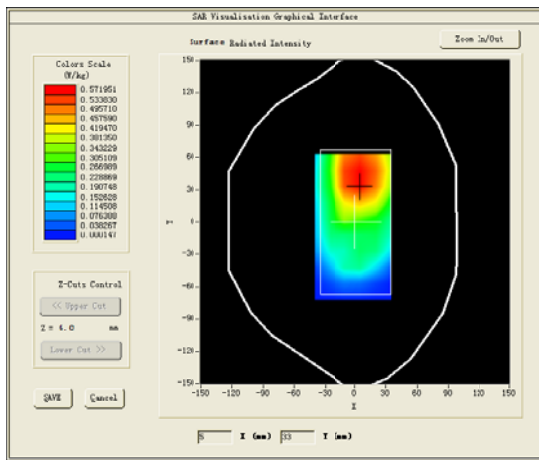
### B. SAR Measurement Results

<b>Frequency (MHz)</b>	848.799988
<b>Relative permittivity (real part)</b>	55.148041
<b>Relative permittivity (imaginary part)</b>	20.969879
<b>Conductivity (S/m)</b>	0.988846
<b>Variation (%)</b>	3.980000



### SURFACE SAR

### VOLUME SAR

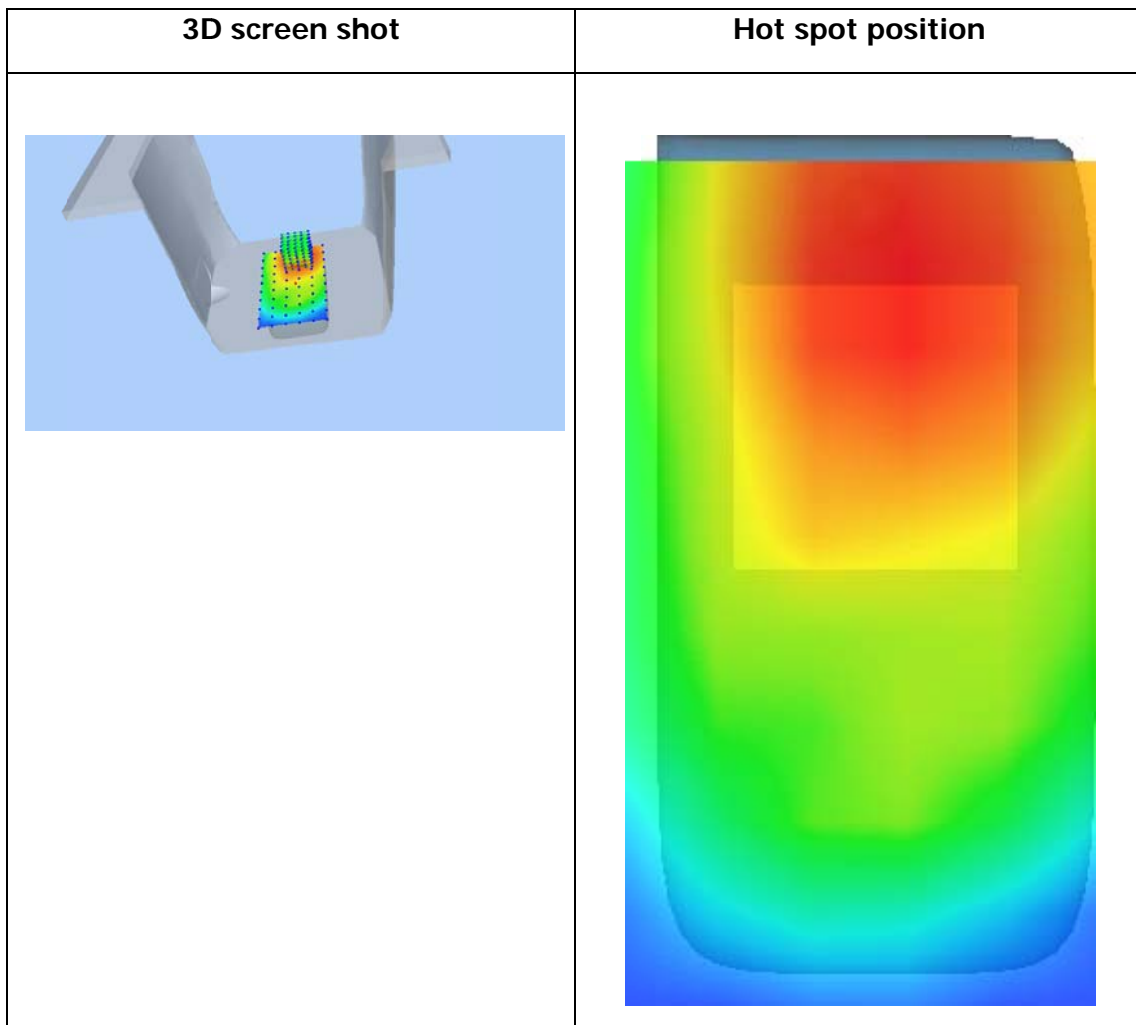
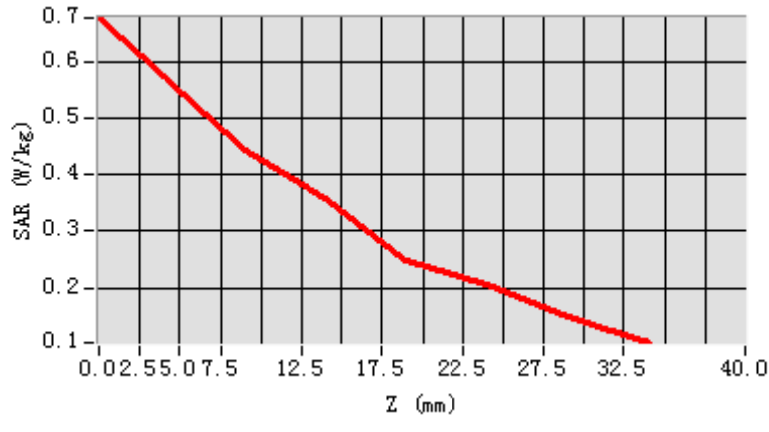


**Maximum location: X=5.00, Y=39.00**

**SAR Peak: 0.74 W/kg**

<b>SAR 10g (W/Kg)</b>	0.414224
<b>SAR 1g (W/Kg)</b>	0.560136

Z (mm)	0.00	4.00	9.00	14.00	19.00	24.00	29.00
SAR (W/Kg)	0.6765	0.5734	0.4429	0.3579	0.2495	0.2064	0.1505



## MEASUREMENT 9

Type: Phone measurement (Complete)

Date of measurement: 22/6/2016

Measurement duration: 15 minutes 0 seconds

### A. Experimental conditions.

<u>Area Scan</u>	<u>dx=12mm dy=12mm</u>
<u>ZoomScan</u>	<u>7x7x7, dx=5mm dy=5mm dz=5mm, Complete</u>
<u>Phantom</u>	<u>Left head</u>
<u>Device Position</u>	<u>Cheek</u>
<u>Band</u>	<u>GSM1900</u>
<u>Channels</u>	<u>High</u>
<u>Signal</u>	<u>TDMA (Crest factor: 8.0)</u>

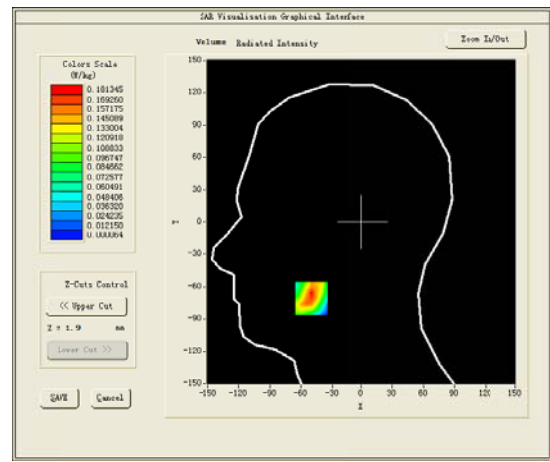
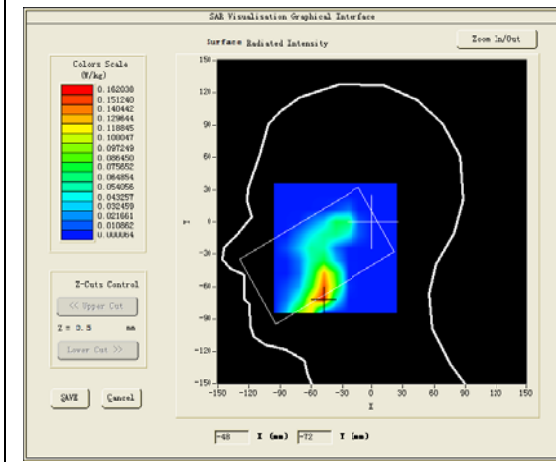
### C. SAR Measurement Results

Higher Band SAR (Channel 810):

<b>Frequency (MHz)</b>	1909.800049
<b>Relative permittivity (real part)</b>	39.397141
<b>Relative permittivity (imaginary part)</b>	13.485280
<b>Conductivity (S/m)</b>	1.430788
<b>Variation (%)</b>	0.000000

### SURFACE SAR

### VOLUME SAR

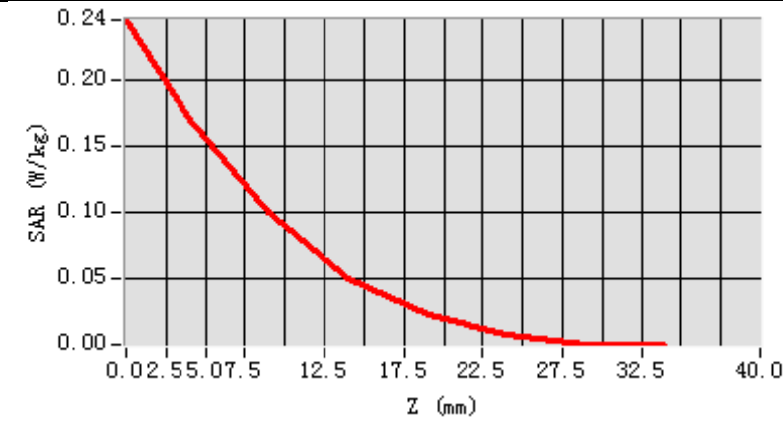


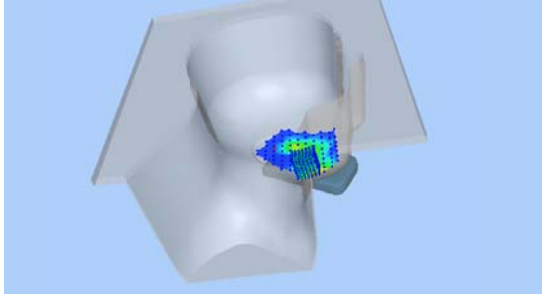
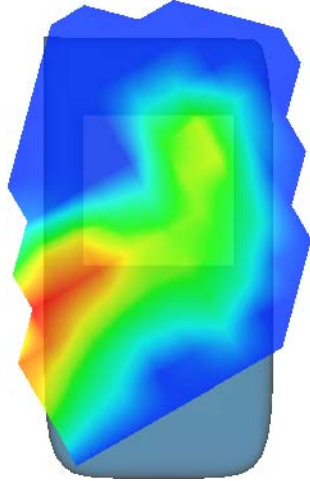
**Maximum location: X=-50.00, Y=-71.00**

**SAR Peak: 0.29 W/kg**

<b>SAR 10g (W/Kg)</b>	0.079802
<b>SAR 1g (W/Kg)</b>	0.160148

Z (mm)	0.00	4.00	9.00	14.00	19.00	24.00	29.00
SAR (W/Kg)	0.2447	0.1691	0.0996	0.0505	0.0222	0.0072	0.0001



3D screen shot	Hot spot position
	

## MEASUREMENT 10

Towards-ground-EDGE-high

Type: Phone measurement (Complete)

Date of measurement: 22/6/2016

Measurement duration: 17 minutes 46 seconds

### A. Experimental conditions.

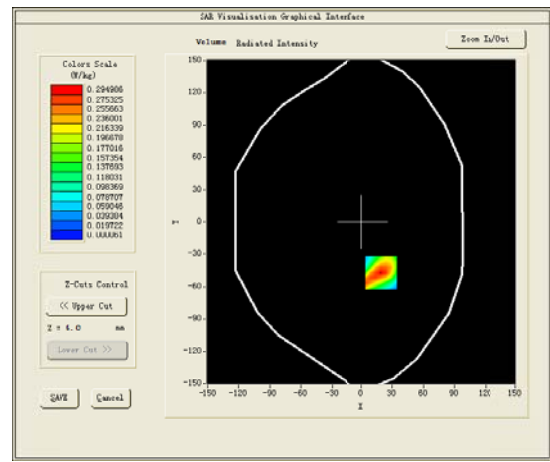
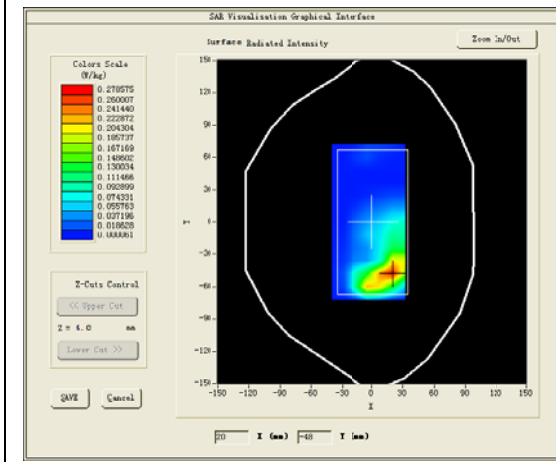
<u>Area Scan</u>	<u>dx=12mm dy=12mm</u>
<u>ZoomScan</u>	<u>7x7x7, dx=5mm dy=5mm dz=5mm, Complete</u>
<u>Phantom</u>	<u>Validation plane</u>
<u>Device Position</u>	<u>Body</u>
<u>Band</u>	<u>CUSTOM (GPRS1900_4Tx)</u>
<u>Channels</u>	<u>High</u>
<u>Signal</u>	<u>Duty Cycle: 8.00 (Crest factor: 8.0)</u>

### C. SAR Measurement Results

Frequency (MHz)	1909.800049
Relative permittivity (real part)	40.000000
Relative permittivity (imaginary part)	13.195320
Conductivity (S/m)	1.400023
Variation (%)	-1.690000

### SURFACE SAR

### VOLUME SAR

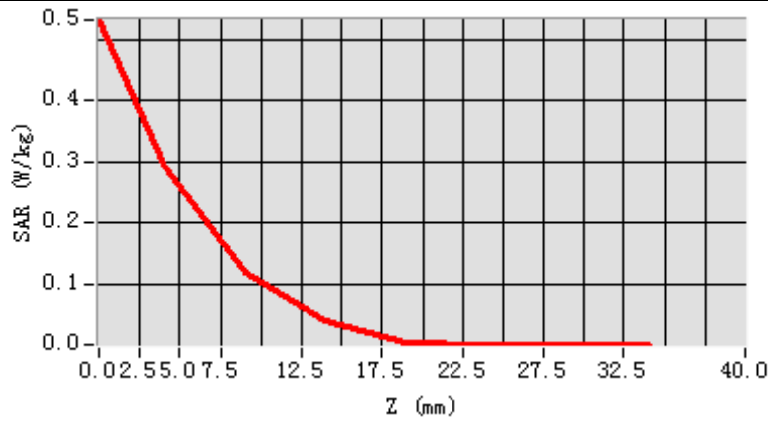


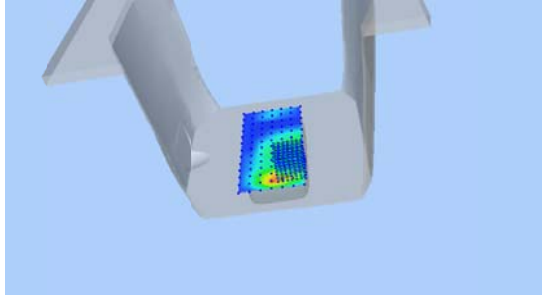
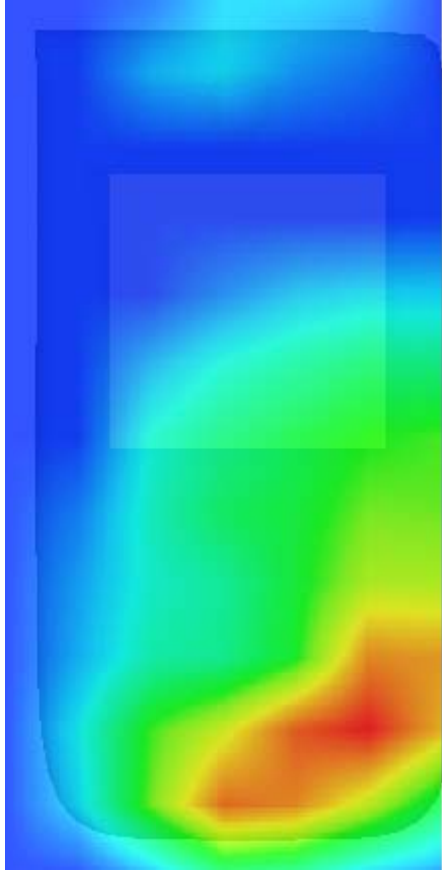
**Maximum location: X=19.00, Y=-47.00**

**SAR Peak: 0.53 W/kg**

<b>SAR 10g (W/Kg)</b>	0.118735
<b>SAR 1g (W/Kg)</b>	0.275354

Z (mm)	0.00	4.00	9.00	14.00	19.00	24.00	29.00
SAR (W/Kg)	0.5315	0.2950	0.1189	0.0390	0.0032	0.0001	0.0001



3D screen shot	Hot spot position
	



## MEASUREMENT 11

Type: Phone measurement (Complete)

Date of measurement: 17/6/2016

Measurement duration: 14 minutes 16 seconds

### A. Experimental conditions.

<u>Area Scan</u>	<u>dx=12mm dy=12mm</u>
<u>ZoomScan</u>	<u>7x7x7, dx=5mm dy=5mm dz=5mm, Complete</u>
<u>Phantom</u>	<u>Left head</u>
<u>Device Position</u>	<u>Cheek</u>
<u>Band</u>	<u>Band2_WCDMA</u>
<u>Channels</u>	<u>Middle</u>
<u>Signal</u>	<u>WCDMA (Crest factor: 1.0)</u>

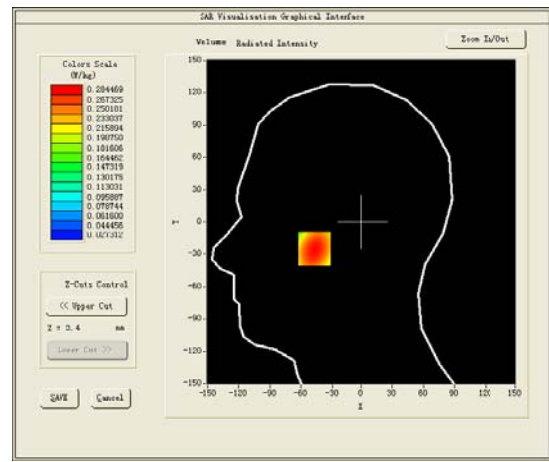
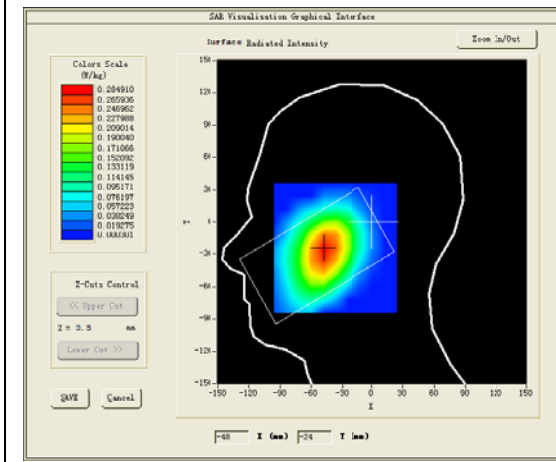
### B. SAR Measurement Results

Middle Band SAR (Channel 9538):

<b>Frequency (MHz)</b>	1907.600000
<b>Relative permittivity (real part)</b>	41.515800
<b>Relative permittivity (imaginary part)</b>	19.488279
<b>Conductivity (S/m)</b>	0.905555
<b>Variation (%)</b>	1.900000

### SURFACE SAR

### VOLUME SAR

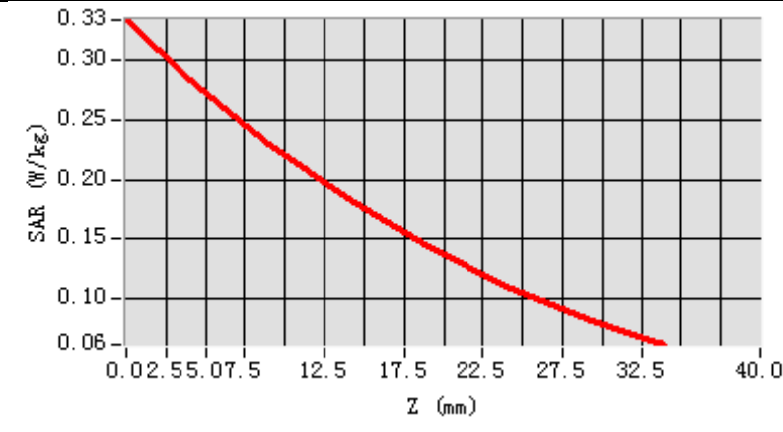


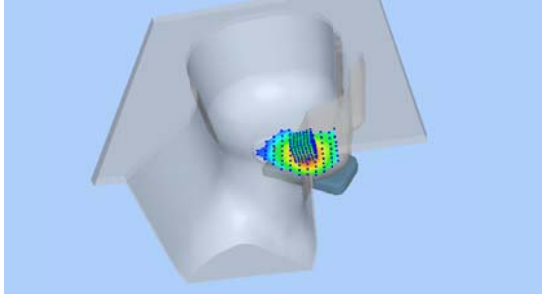
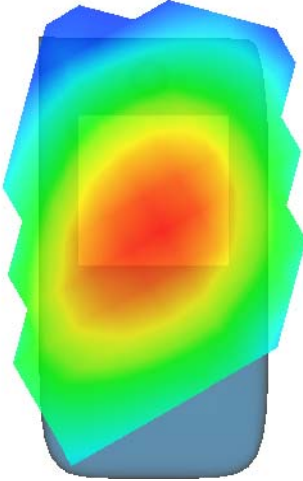
**Maximum location: X=-47.00, Y=-25.00**

**SAR Peak: 0.34 W/kg**

<b>SAR 10g (W/Kg)</b>	0.123624
<b>SAR 1g (W/Kg)</b>	0.200864

Z (mm)	0.00	4.00	9.00	14.00	19.00	24.00	29.00
SAR (W/Kg)	0.3345	0.2845	0.2299	0.1838	0.1438	0.1101	0.0826



3D screen shot	Hot spot position
	

## MEASUREMENT 12

Towards-ground-high

Type: Phone measurement (Complete)

Date of measurement: 17/6/2016

Measurement duration: 12 minutes 42 seconds

### A. Experimental conditions.

<u>Area Scan</u>	<u>dx=12mm dy=12mm</u>
<u>ZoomScan</u>	<u>7x7x7, dx=5mm dy=5mm dz=5mm, Complete</u>
<u>Phantom</u>	<u>Validation plane</u>
<u>Device Position</u>	<u>Body</u>
<u>Band</u>	<u>Band2_WCDMA</u>
<u>Channels</u>	<u>High</u>
<u>Signal</u>	<u>WCDMA (Crest factor: 1.0)</u>

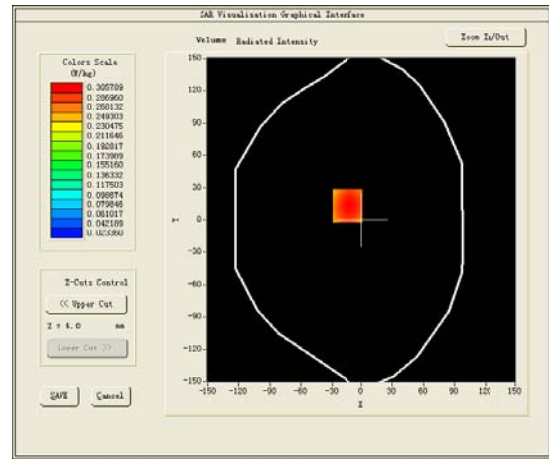
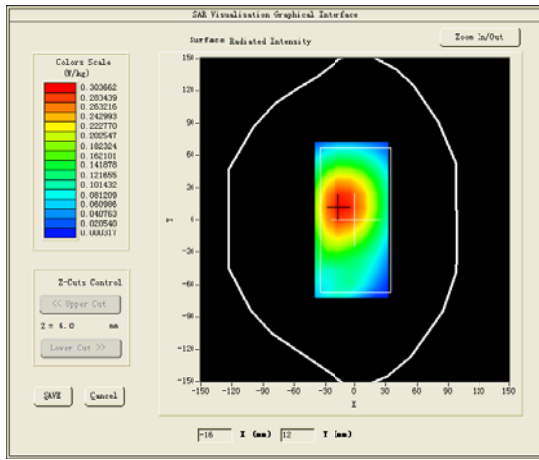
### B. SAR Measurement Results

Middle Band SAR (Channel 9538):

<b>Frequency (MHz)</b>	1907.600000
<b>Relative permittivity (real part)</b>	55.265800
<b>Relative permittivity (imaginary part)</b>	20.888281
<b>Conductivity (S/m)</b>	0.970609
<b>Variation (%)</b>	0.110000

### SURFACE SAR

### VOLUME SAR

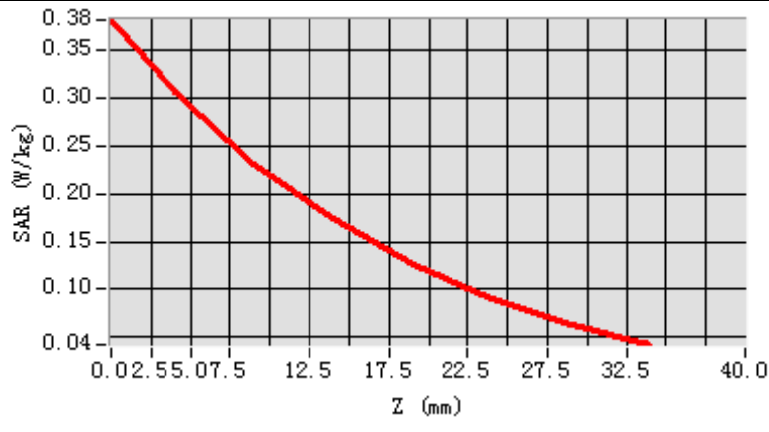


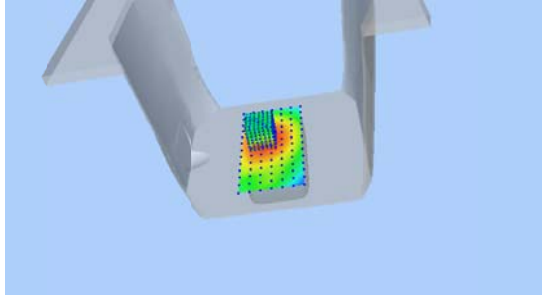
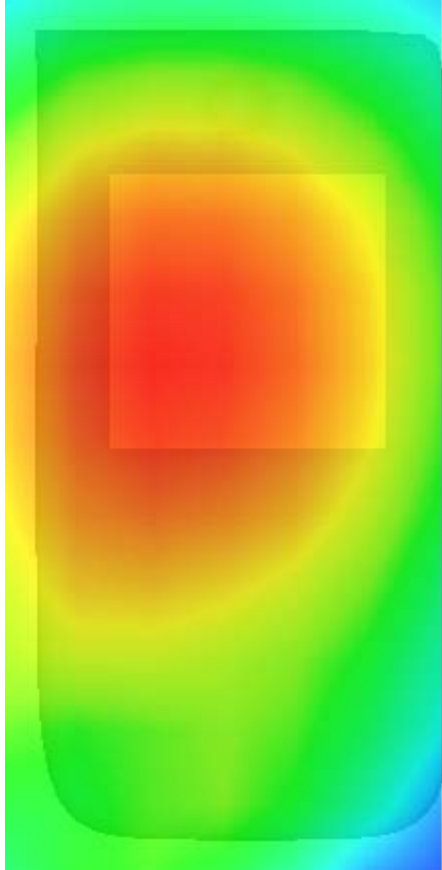
**Maximum location: X=-14.00, Y=13.00**

**SAR Peak: 0.38 W/kg**

<b>SAR 10g (W/Kg)</b>	0.364059
<b>SAR 1g (W/Kg)</b>	0.914658

Z (mm)	0.00	4.00	9.00	14.00	19.00	24.00	29.00
SAR (W/Kg)	0.3808	0.3058	0.2298	0.1733	0.1264	0.0907	0.0642



3D screen shot	Hot spot position
	

## MEASUREMENT 13

Type: Phone measurement (Complete)

Date of measurement: 17/6/2016

Measurement duration: 14 minutes 16 seconds

### A. Experimental conditions.

<u>Area Scan</u>	<u>dx=12mm dy=12mm</u>
<u>ZoomScan</u>	<u>7x7x7, dx=5mm dy=5mm</u> <u>dz=5mm, Complete</u>
<u>Phantom</u>	<u>Left head</u>
<u>Device Position</u>	<u>Cheek</u>
<u>Band</u>	<u>Band4_WCDMA</u>
<u>Channels</u>	<u>High</u>
<u>Signal</u>	<u>WCDMA (Crest factor: 1.0)</u>

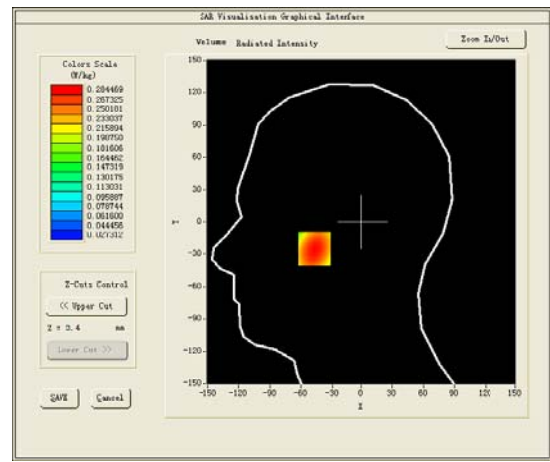
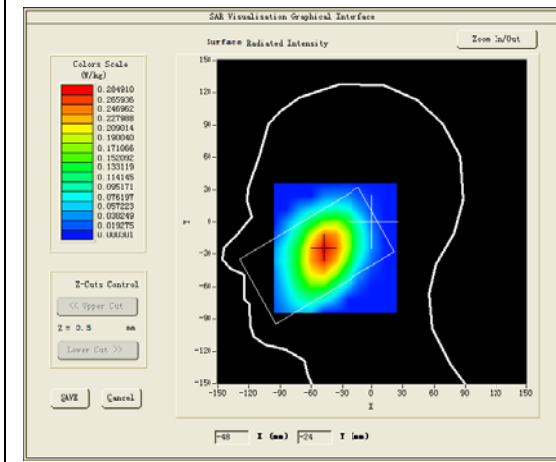
### B. SAR Measurement Results

Middle Band SAR (Channel 1513):

<b>Frequency (MHz)</b>	1752.600000
<b>Relative permittivity (real part)</b>	41.515800
<b>Relative permittivity (imaginary part)</b>	19.488279
<b>Conductivity (S/m)</b>	0.905555
<b>Variation (%)</b>	1.900000

### SURFACE SAR

### VOLUME SAR



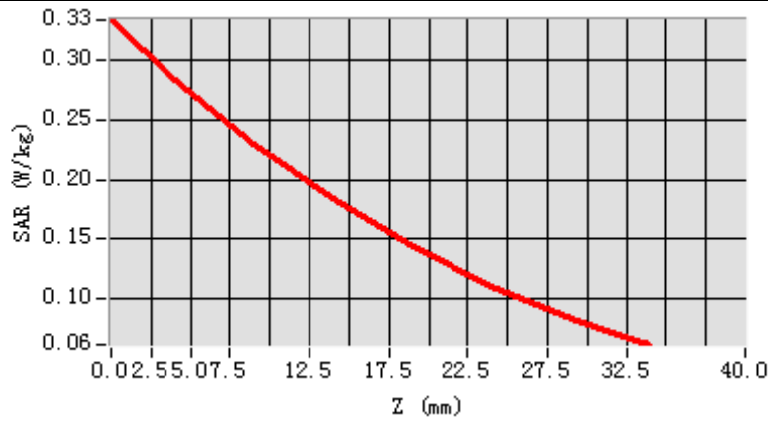
**Maximum location: X=-47.00, Y=-25.00**

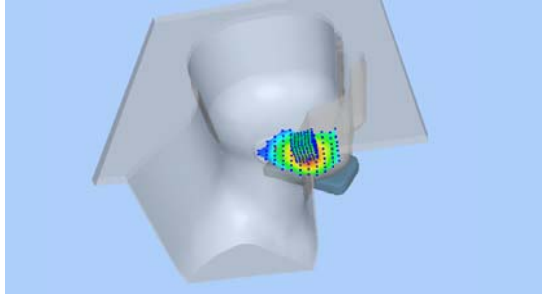
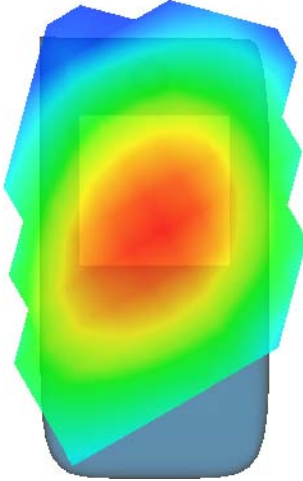
**SAR Peak: 0.34 W/kg**

<b>SAR 10g (W/Kg)</b>	0.078624
<b>SAR 1g (W/Kg)</b>	0.243864



Z (mm)	0.00	4.00	9.00	14.00	19.00	24.00	29.00
SAR (W/Kg)	0.3345	0.2845	0.2299	0.1838	0.1438	0.1101	0.0826



3D screen shot	Hot spot position
	

## MEASUREMENT 14

Towards-phantom-middle

Type: Phone measurement (Complete)

Date of measurement: 17/6/2016

Measurement duration: 12 minutes 42 seconds

### A. Experimental conditions.

<u>Area Scan</u>	<u>dx=12mm dy=12mm</u>
<u>ZoomScan</u>	<u>7x7x7, dx=5mm dy=5mm dz=5mm, Complete</u>
<u>Phantom</u>	<u>Validation plane</u>
<u>Device Position</u>	<u>Body</u>
<u>Band</u>	<u>Band4 WCDMA</u>
<u>Channels</u>	<u>Middle</u>
<u>Signal</u>	<u>WCDMA (Crest factor: 1.0)</u>

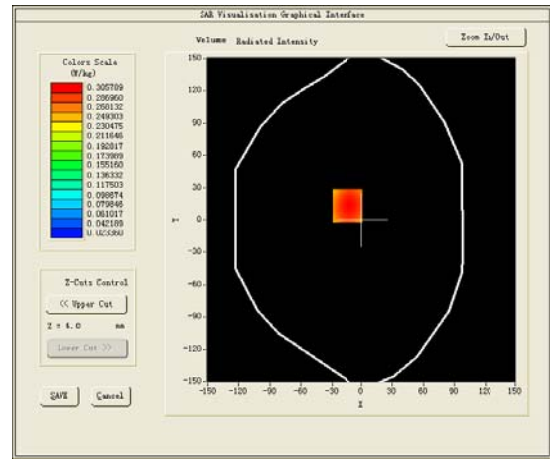
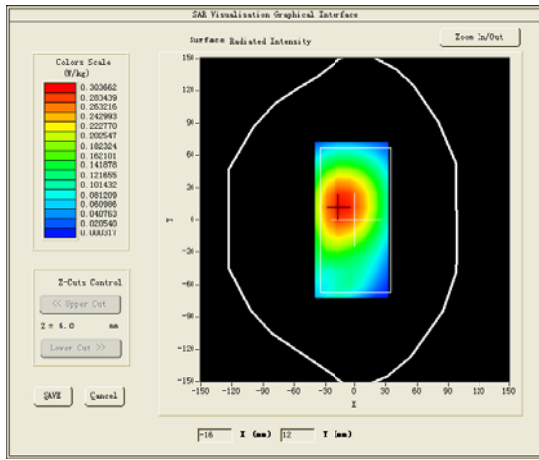
### B. SAR Measurement Results

Middle Band SAR (Channel 1413):

<b>Frequency (MHz)</b>	1732.500000
<b>Relative permittivity (real part)</b>	55.265800
<b>Relative permittivity (imaginary part)</b>	20.888281
<b>Conductivity (S/m)</b>	0.970609
<b>Variation (%)</b>	0.110000

### SURFACE SAR

### VOLUME SAR

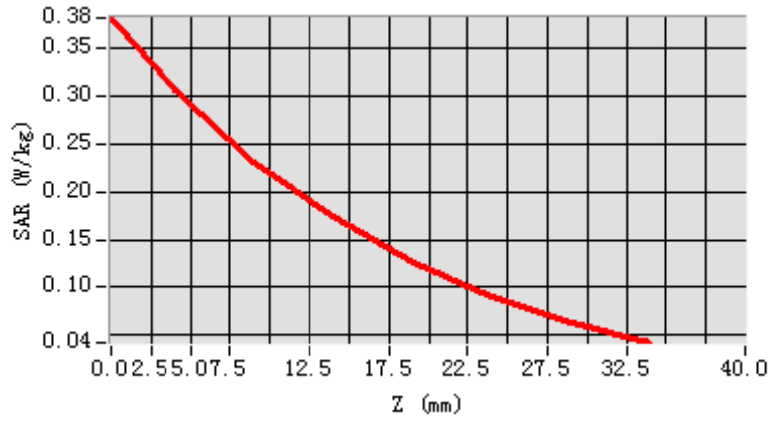


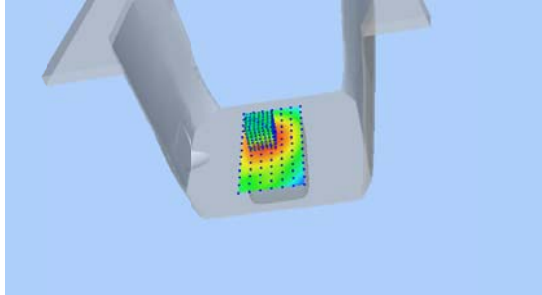
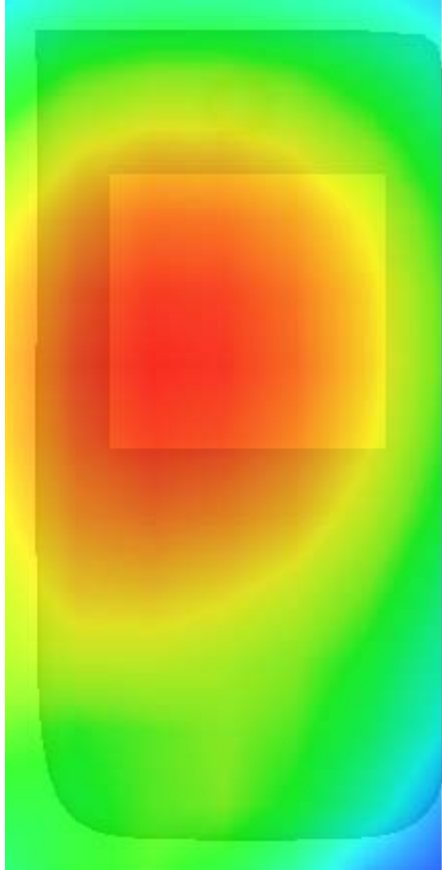
**Maximum location: X=-14.00, Y=13.00**

**SAR Peak: 0.38 W/kg**

<b>SAR 10g (W/Kg)</b>	0.201059
<b>SAR 1g (W/Kg)</b>	0.288658

Z (mm)	0.00	4.00	9.00	14.00	19.00	24.00	29.00
SAR (W/Kg)	0.3808	0.3058	0.2298	0.1733	0.1264	0.0907	0.0642



3D screen shot	Hot spot position
	

## MEASUREMENT 15

20M-1RB#99

Type: Phone measurement (Complete)

Date of measurement: 18/6/2016

Measurement duration: 15 minutes 49 seconds

### A. Experimental conditions.

<u>Area Scan</u>	<u>dx=12mm dy=12mm</u>
<u>ZoomScan</u>	<u>7x7x7, dx=5mm dy=5mm</u> <u>dz=5mm, Complete</u>
<u>Phantom</u>	<u>Left head</u>
<u>Device Position</u>	<u>Cheek</u>
<u>Band</u>	<u>LTE band 2</u>
<u>Channels</u>	<u>High</u>
<u>Signal</u>	<u>LTE (Crest factor: 1.0)</u>

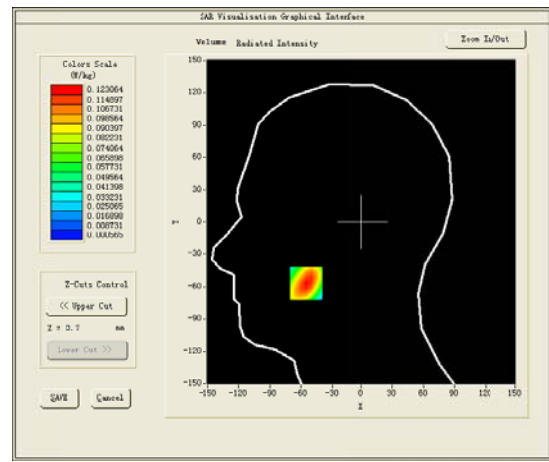
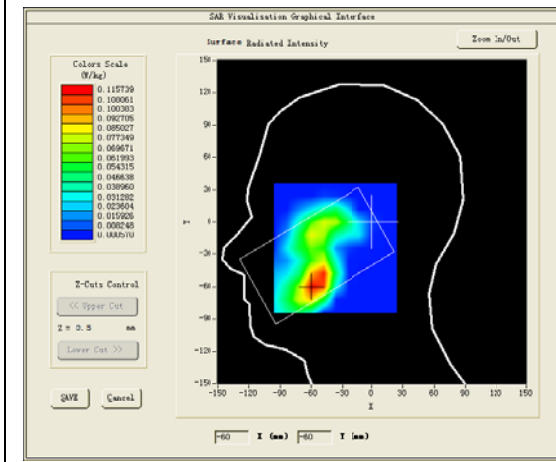
### B. SAR Measurement Results

Higher Band SAR (Channel 18900):

<b>Frequency (MHz)</b>	1880.000000
<b>Relative permittivity (real part)</b>	41.504749
<b>Relative permittivity (imaginary part)</b>	14.184750
<b>Conductivity (S/m)</b>	1.378679
<b>Variation (%)</b>	-3.630000

### SURFACE SAR

### VOLUME SAR

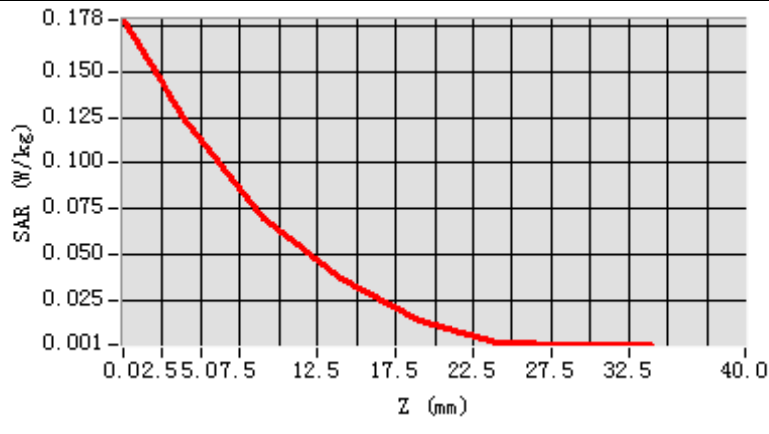


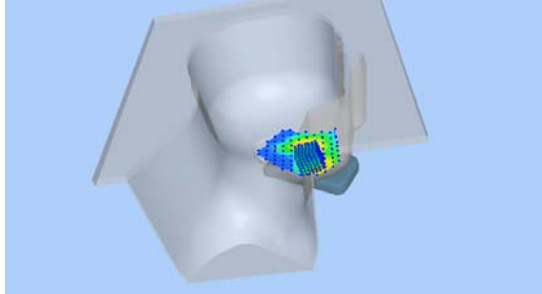
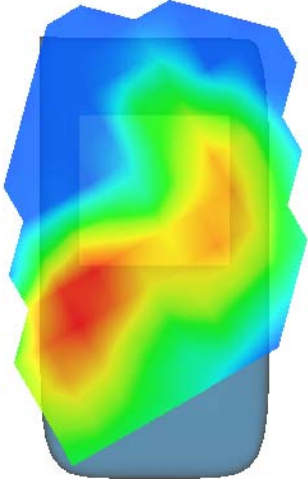
**Maximum location: X=-55.00, Y=-57.00**

**SAR Peak: 0.18 W/kg**

<b>SAR 10g (W/Kg)</b>	0.055562
<b>SAR 1g (W/Kg)</b>	0.090796

Z (mm)	0.00	4.00	9.00	14.00	19.00	24.00	29.00
SAR (W/Kg)	0.1784	0.1231	0.0695	0.0363	0.0133	0.0013	0.0006



3D screen shot	Hot spot position
	

## MEASUREMENT 16

Towards-ground-20M-1RB#99-high

Type: Phone measurement (Complete)

Date of measurement: 18/6/2016

Measurement duration: 15 minutes 4 seconds

### A. Experimental conditions.

<u>Area Scan</u>	<u>dx=12mm dy=12mm</u>
<u>ZoomScan</u>	<u>7x7x7, dx=5mm dy=5mm dz=5mm, Complete</u>
<u>Phantom</u>	<u>Validation plane</u>
<u>Device Position</u>	<u>Body</u>
<u>Band</u>	<u>LTE band 2</u>
<u>Channels</u>	<u>High</u>
<u>Signal</u>	<u>LTE (Crest factor: 1.0)</u>

### B. SAR Measurement Results

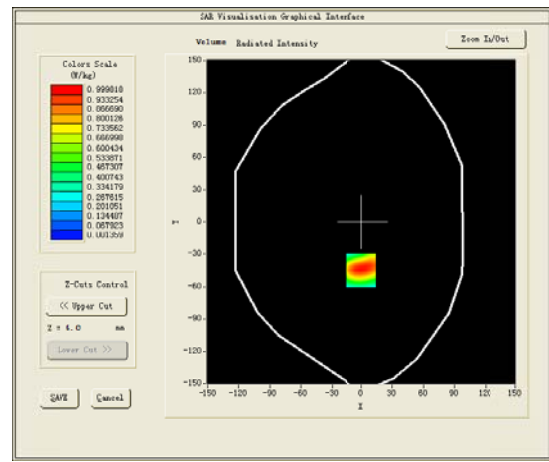
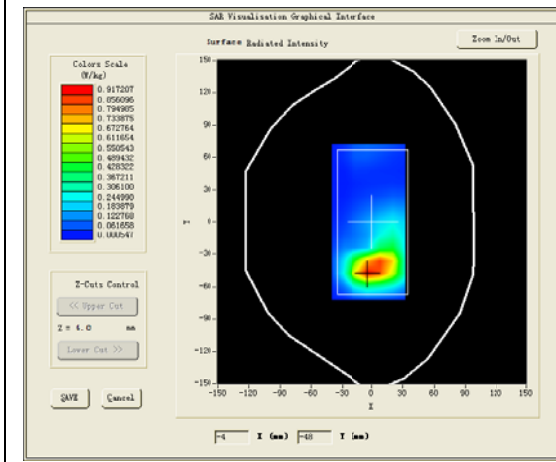
Lower Band SAR (Channel 19100):

<b>Frequency (MHz)</b>	1900.000000
<b>Relative permittivity (real part)</b>	53.306198
<b>Relative permittivity (imaginary part)</b>	15.673700
<b>Conductivity (S/m)</b>	1.492920
<b>Variation (%)</b>	-0.430000



### SURFACE SAR

### VOLUME SAR

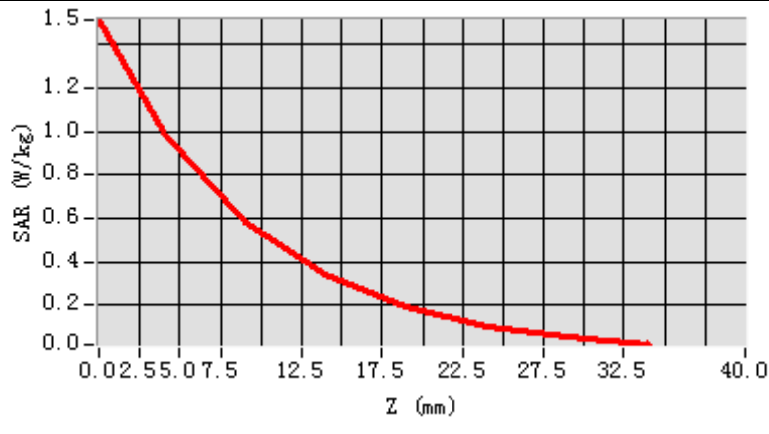


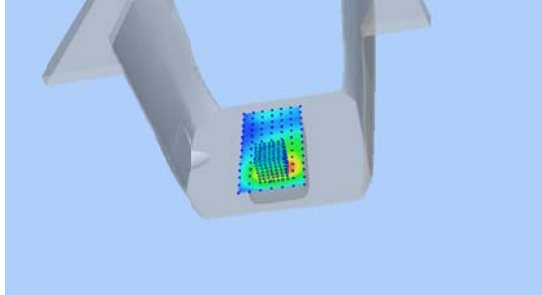
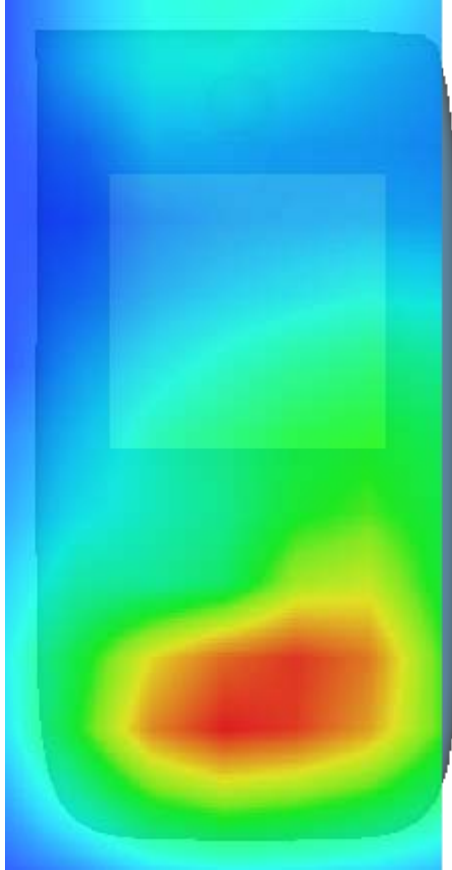
**Maximum location: X=-1.00, Y=-45.00**

**SAR Peak: 1.77 W/kg**

<b>SAR 10g (W/Kg)</b>	0.528818
<b>SAR 1g (W/Kg)</b>	0.979099

Z (mm)	0.00	4.00	9.00	14.00	19.00	24.00	29.00
SAR (W/Kg)	1.5131	0.9998	0.5818	0.3443	0.1951	0.1055	0.0513



3D screen shot	Hot spot position
	

## MEASUREMENT 17

20M-1RB#50

Type: Phone measurement (Complete)

Date of measurement: 18/6/2016

Measurement duration: 15 minutes 49 seconds

### A. Experimental conditions.

<u>Area Scan</u>	<u>dx=12mm dy=12mm</u>
<u>ZoomScan</u>	<u>7x7x7, dx=5mm dy=5mm dz=5mm, Complete</u>
<u>Phantom</u>	<u>Left head</u>
<u>Device Position</u>	<u>Cheek</u>
<u>Band</u>	<u>LTE band 7</u>
<u>Channels</u>	<u>High</u>
<u>Signal</u>	<u>LTE (Crest factor: 1.0)</u>

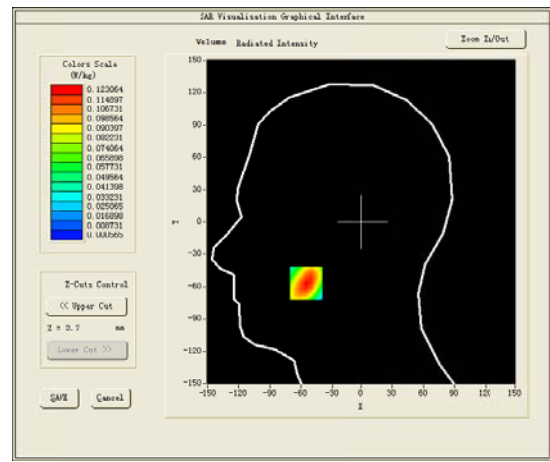
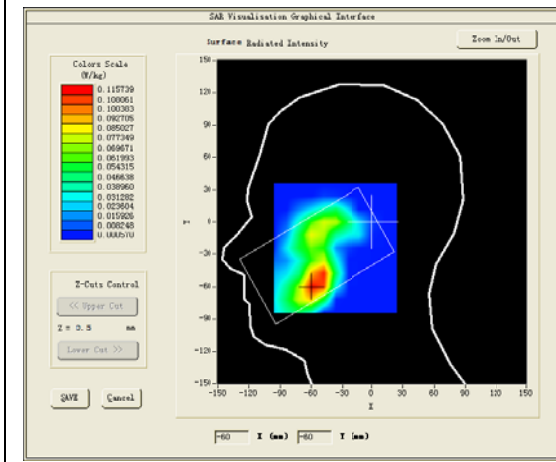
### B. SAR Measurement Results

Higher Band SAR (Channel 21350):

<b>Frequency (MHz)</b>	2560.000000
<b>Relative permittivity (real part)</b>	41.504749
<b>Relative permittivity (imaginary part)</b>	14.184750
<b>Conductivity (S/m)</b>	1.378679
<b>Variation (%)</b>	-3.630000

### SURFACE SAR

### VOLUME SAR

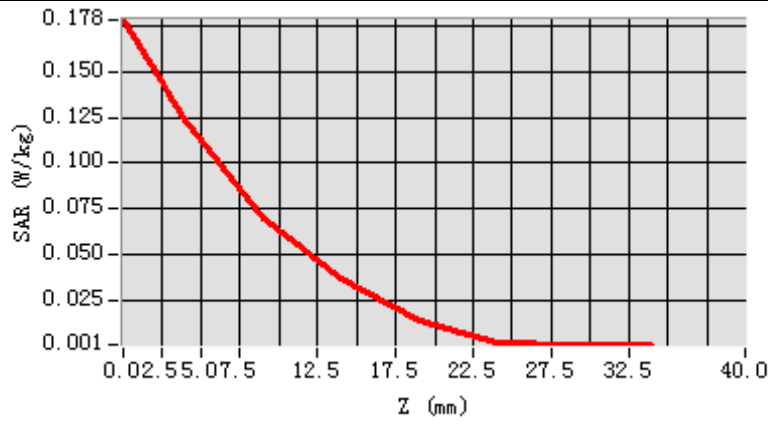


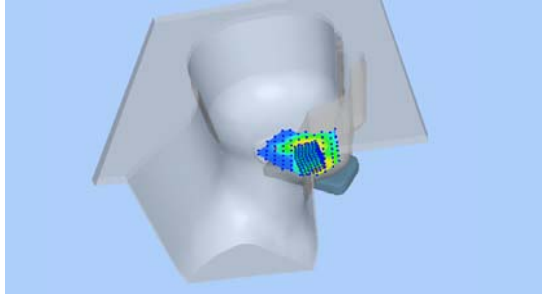
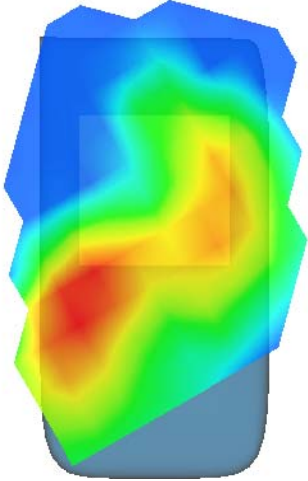
**Maximum location: X=-55.00, Y=-57.00**

**SAR Peak: 0.18 W/kg**

<b>SAR 10g (W/Kg)</b>	0.023562
<b>SAR 1g (W/Kg)</b>	0.090796

Z (mm)	0.00	4.00	9.00	14.00	19.00	24.00	29.00
SAR (W/Kg)	0.1784	0.1231	0.0695	0.0363	0.0133	0.0013	0.0006



3D screen shot	Hot spot position
	

## MEASUREMENT 18

Towards-ground-20M-1RB#50-middle

Type: Phone measurement (Complete)

Date of measurement: 18/6/2016

Measurement duration: 15 minutes 4 seconds

### A. Experimental conditions.

<u>Area Scan</u>	<u>dx=12mm dy=12mm</u>
<u>ZoomScan</u>	<u>7x7x7, dx=5mm dy=5mm dz=5mm, Complete</u>
<u>Phantom</u>	<u>Validation plane</u>
<u>Device Position</u>	<u>Body</u>
<u>Band</u>	<u>LTE band 7</u>
<u>Channels</u>	<u>Low</u>
<u>Signal</u>	<u>LTE (Crest factor: 1.0)</u>

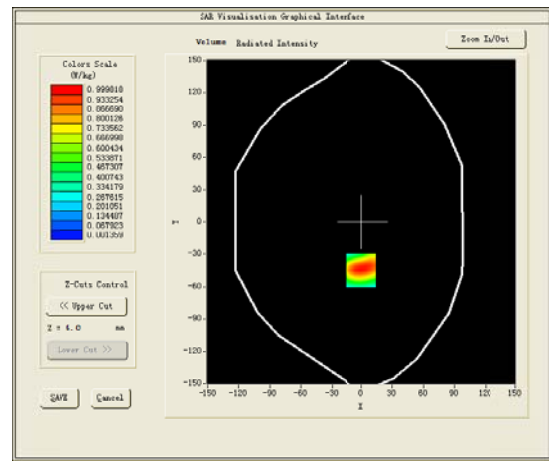
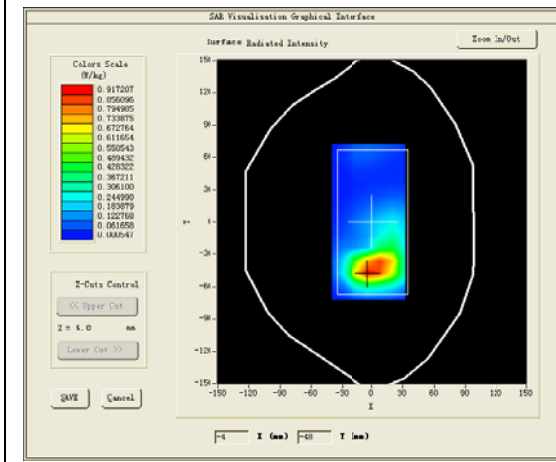
### B. SAR Measurement Results

Lower Band SAR (Channel 21100):

<b>Frequency (MHz)</b>	2535.000000
<b>Relative permittivity (real part)</b>	53.306198
<b>Relative permittivity (imaginary part)</b>	15.673700
<b>Conductivity (S/m)</b>	1.492920
<b>Variation (%)</b>	-0.430000

### SURFACE SAR

### VOLUME SAR

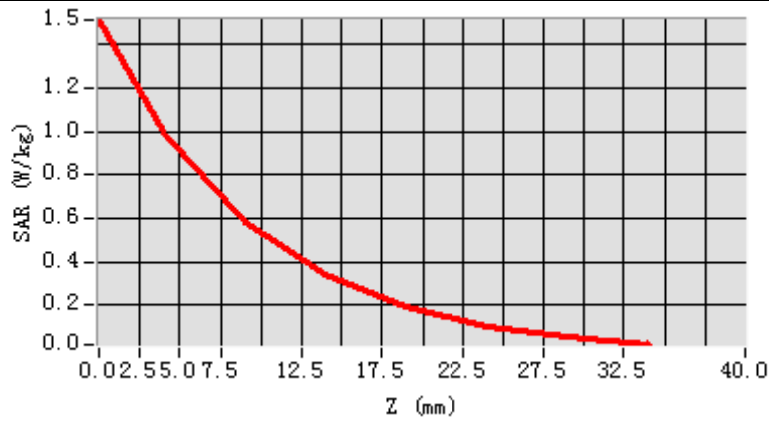


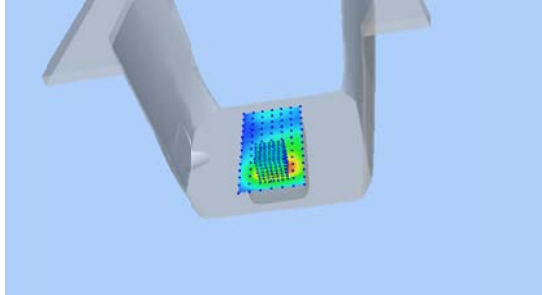
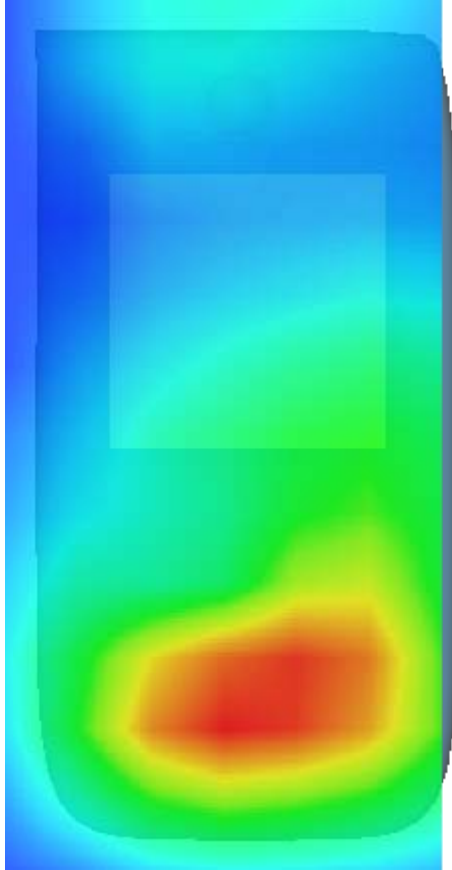
**Maximum location: X=-1.00, Y=-45.00**

**SAR Peak: 1.77 W/kg**

<b>SAR 10g (W/Kg)</b>	0.573818
<b>SAR 1g (W/Kg)</b>	0.881499

Z (mm)	0.00	4.00	9.00	14.00	19.00	24.00	29.00
SAR (W/Kg)	1.5131	0.9998	0.5818	0.3443	0.1951	0.1055	0.0513



3D screen shot	Hot spot position
	



## MEASUREMENT 19

20M-1RB#0

Type: Phone measurement (Complete)

Date of measurement: 18/6/2016

Measurement duration: 15 minutes 49 seconds

### A. Experimental conditions.

<u>Area Scan</u>	<u>dx=12mm dy=12mm</u>
<u>ZoomScan</u>	<u>7x7x7, dx=5mm dy=5mm dz=5mm, Complete</u>
<u>Phantom</u>	<u>Left head</u>
<u>Device Position</u>	<u>Cheek</u>
<u>Band</u>	<u>LTE band 20</u>
<u>Channels</u>	<u>High</u>
<u>Signal</u>	<u>LTE (Crest factor: 1.0)</u>

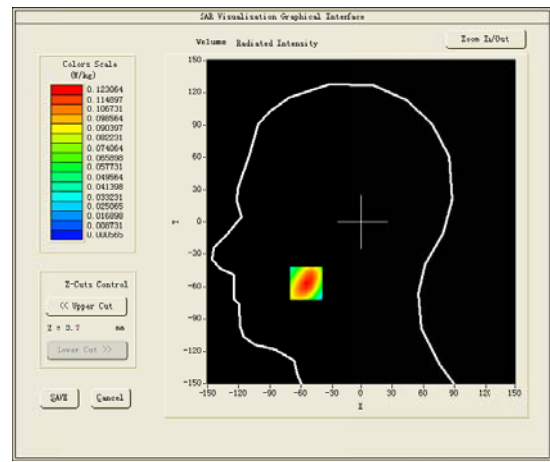
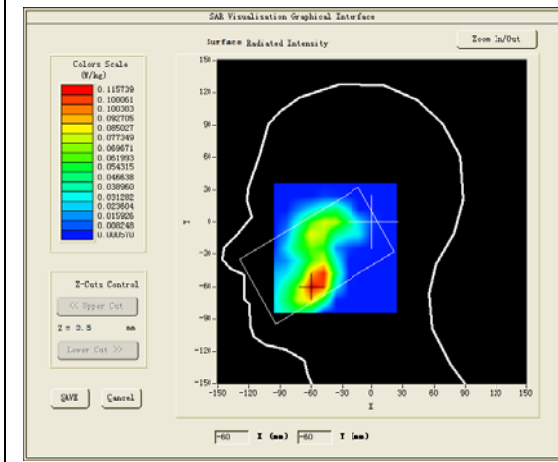
### B. SAR Measurement Results

Higher Band SAR (Channel 24245):

<b>Frequency (MHz)</b>	841.500000
<b>Relative permittivity (real part)</b>	41.504749
<b>Relative permittivity (imaginary part)</b>	14.184750
<b>Conductivity (S/m)</b>	1.378679
<b>Variation (%)</b>	-3.630000

### SURFACE SAR

### VOLUME SAR

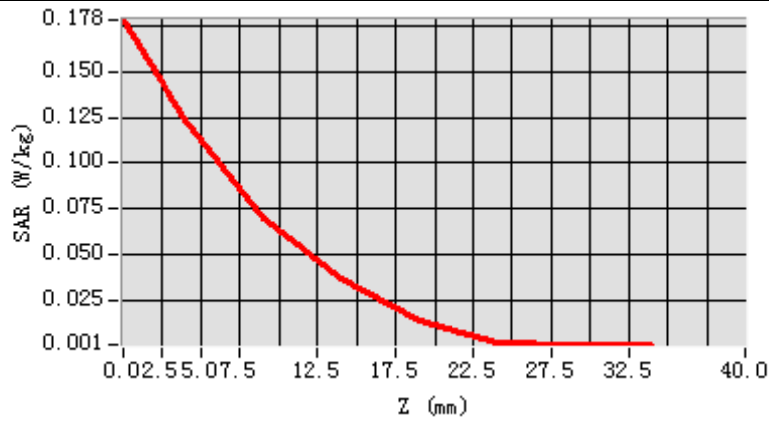


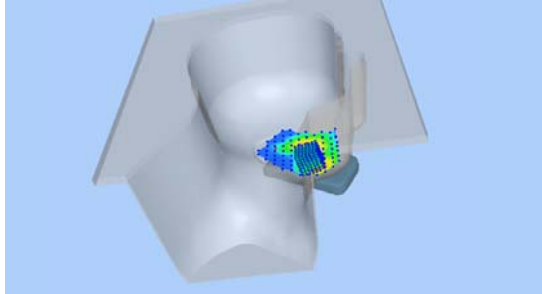
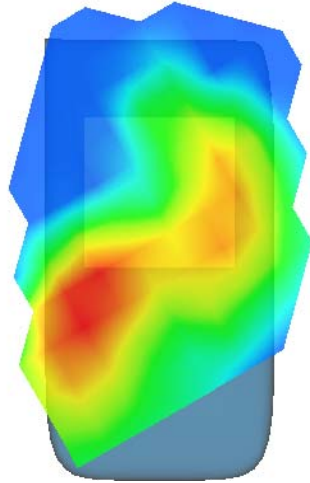
**Maximum location: X=-55.00, Y=-57.00**

**SAR Peak: 0.18 W/kg**

<b>SAR 10g (W/Kg)</b>	0.016562
<b>SAR 1g (W/Kg)</b>	0.074796

Z (mm)	0.00	4.00	9.00	14.00	19.00	24.00	29.00
SAR (W/Kg)	0.1784	0.1231	0.0695	0.0363	0.0133	0.0013	0.0006



3D screen shot	Hot spot position
	

## MEASUREMENT 20

Towards-ground-20M-1RB#50-middle

Type: Phone measurement (Complete)

Date of measurement: 18/6/2016

Measurement duration: 15 minutes 4 seconds

### A. Experimental conditions.

<u>Area Scan</u>	<u>dx=12mm dy=12mm</u>
<u>ZoomScan</u>	<u>7x7x7, dx=5mm dy=5mm dz=5mm, Complete</u>
<u>Phantom</u>	<u>Validation plane</u>
<u>Device Position</u>	<u>Body</u>
<u>Band</u>	<u>LTE band 20</u>
<u>Channels</u>	<u>Middle</u>
<u>Signal</u>	<u>LTE (Crest factor: 1.0)</u>

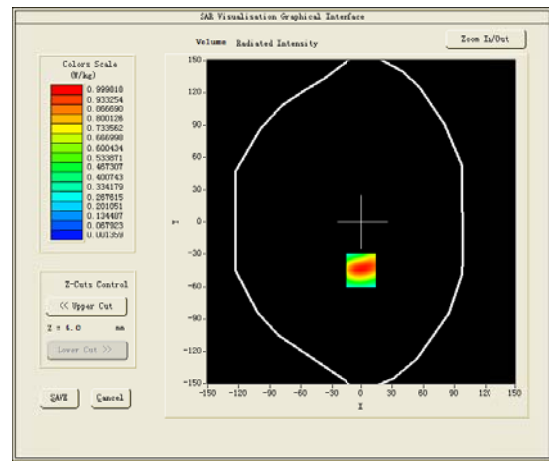
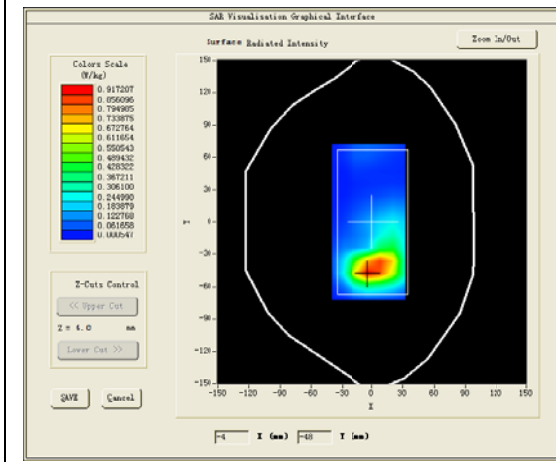
### B. SAR Measurement Results

Lower Band SAR (Channel 24230):

<b>Frequency (MHz)</b>	840.000000
<b>Relative permittivity (real part)</b>	53.306198
<b>Relative permittivity (imaginary part)</b>	15.673700
<b>Conductivity (S/m)</b>	1.492920
<b>Variation (%)</b>	-0.430000

### SURFACE SAR

### VOLUME SAR

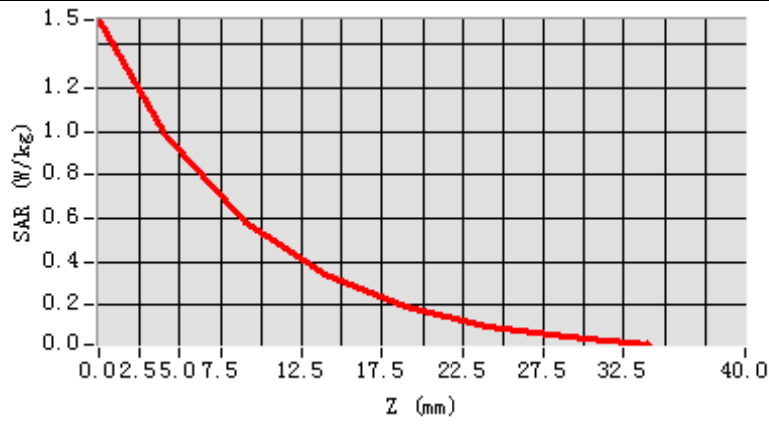


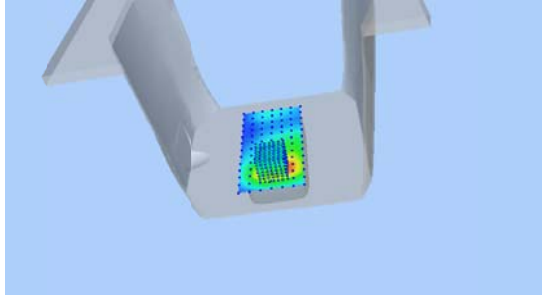
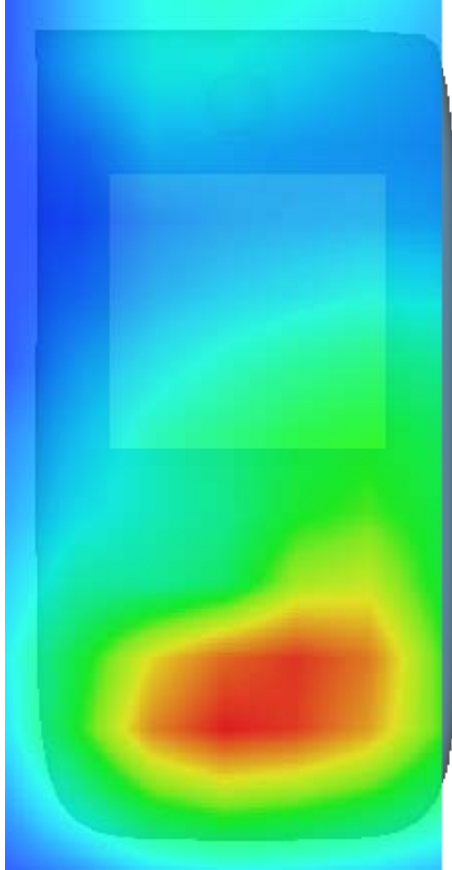
**Maximum location: X=-1.00, Y=-45.00**

**SAR Peak: 1.77 W/kg**

<b>SAR 10g (W/Kg)</b>	0.557818
<b>SAR 1g (W/Kg)</b>	0.807499

Z (mm)	0.00	4.00	9.00	14.00	19.00	24.00	29.00
SAR (W/Kg)	1.5131	0.9998	0.5818	0.3443	0.1951	0.1055	0.0513



3D screen shot	Hot spot position
	

## MEASUREMENT 21

20M-1RB#50

Type: Phone measurement (Complete)

Date of measurement: 18/6/2016

Measurement duration: 15 minutes 49 seconds

### A. Experimental conditions.

<u>Area Scan</u>	<u>dx=12mm dy=12mm</u>
<u>ZoomScan</u>	<u>7x7x7, dx=5mm dy=5mm</u> <u>dz=5mm, Complete</u>
<u>Phantom</u>	<u>Left head</u>
<u>Device Position</u>	<u>Cheek</u>
<u>Band</u>	<u>LTE band 28</u>
<u>Channels</u>	<u>High</u>
<u>Signal</u>	<u>LTE (Crest factor: 1.0)</u>

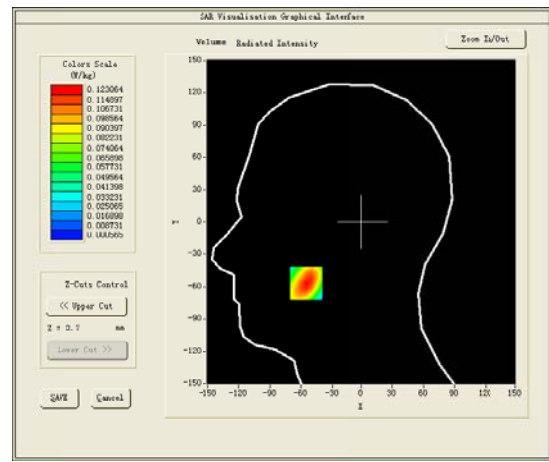
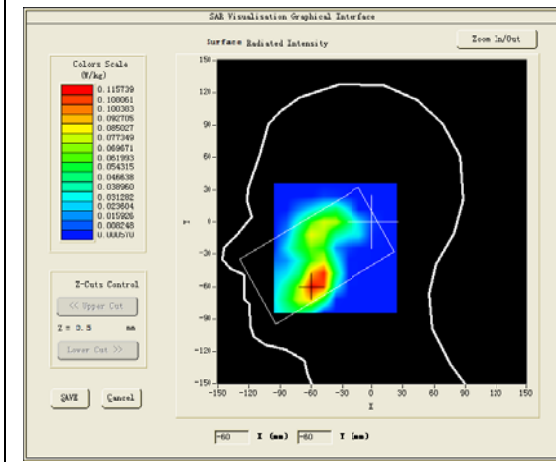
### B. SAR Measurement Results

Higher Band SAR (Channel 27560):

<b>Frequency (MHz)</b>	738.000000
<b>Relative permittivity (real part)</b>	41.504749
<b>Relative permittivity (imaginary part)</b>	14.184750
<b>Conductivity (S/m)</b>	1.378679
<b>Variation (%)</b>	-3.630000

### SURFACE SAR

### VOLUME SAR



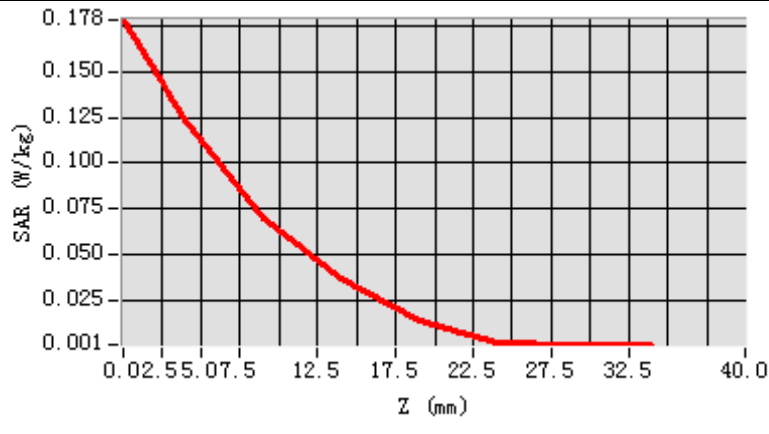
**Maximum location: X=-55.00, Y=-57.00**

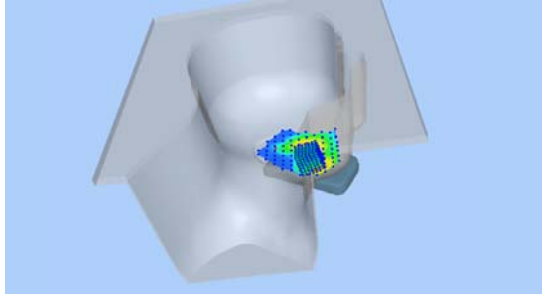
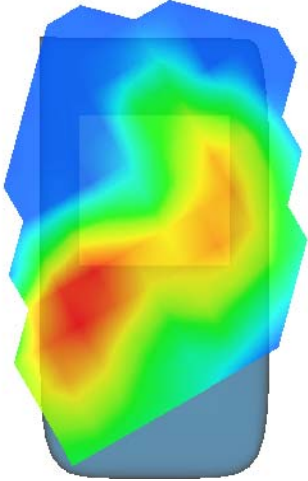
**SAR Peak: 0.18 W/kg**

<b>SAR 10g (W/Kg)</b>	0.058562
<b>SAR 1g (W/Kg)</b>	0.112796



Z (mm)	0.00	4.00	9.00	14.00	19.00	24.00	29.00
SAR (W/Kg)	0.1784	0.1231	0.0695	0.0363	0.0133	0.0013	0.0006



3D screen shot	Hot spot position
	

## MEASUREMENT 18

Towards-ground-20M-1RB#50-low

Type: Phone measurement (Complete)

Date of measurement: 18/6/2016

Measurement duration: 15 minutes 4 seconds

### A. Experimental conditions.

<u>Area Scan</u>	<u>dx=12mm dy=12mm</u>
<u>ZoomScan</u>	<u>7x7x7, dx=5mm dy=5mm dz=5mm, Complete</u>
<u>Phantom</u>	<u>Validation plane</u>
<u>Device Position</u>	<u>Body</u>
<u>Band</u>	<u>LTE band 28</u>
<u>Channels</u>	<u>Low</u>
<u>Signal</u>	<u>LTE (Crest factor: 1.0)</u>

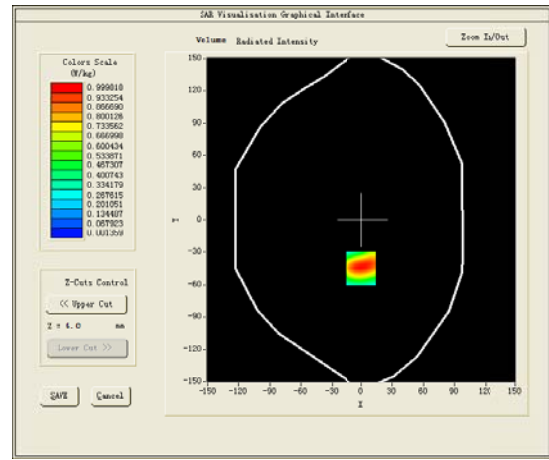
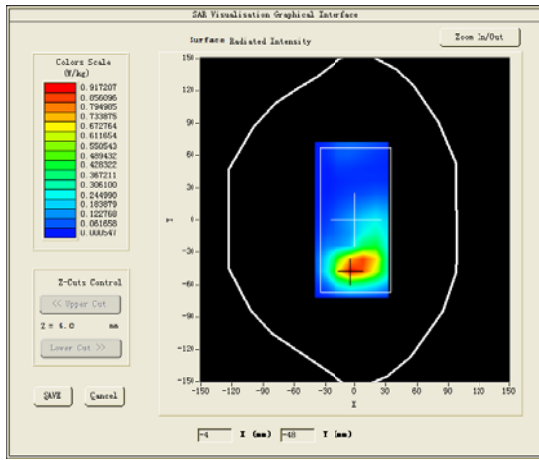
### B. SAR Measurement Results

Lower Band SAR (Channel 27535):

<b>Frequency (MHz)</b>	735.500000
<b>Relative permittivity (real part)</b>	53.306198
<b>Relative permittivity (imaginary part)</b>	15.673700
<b>Conductivity (S/m)</b>	1.492920
<b>Variation (%)</b>	-0.430000

### SURFACE SAR

### VOLUME SAR

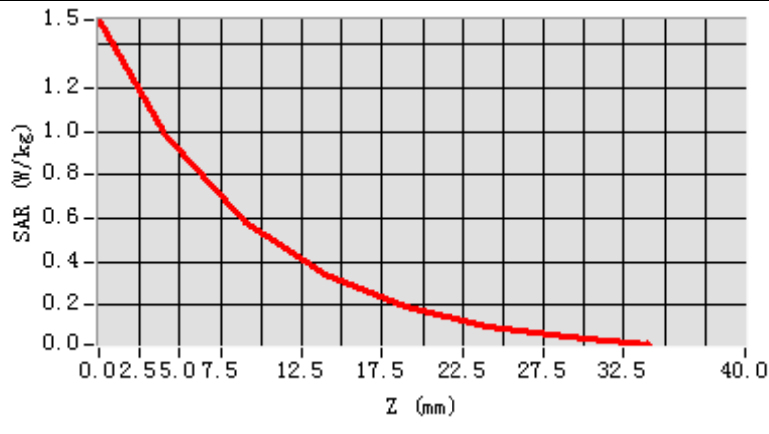


**Maximum location: X=-1.00, Y=-45.00**

**SAR Peak: 1.77 W/kg**

<b>SAR 10g (W/Kg)</b>	0.583818
<b>SAR 1g (W/Kg)</b>	0.929499

Z (mm)	0.00	4.00	9.00	14.00	19.00	24.00	29.00
SAR (W/Kg)	1.5131	0.9998	0.5818	0.3443	0.1951	0.1055	0.0513



3D screen shot	Hot spot position
