



— Waveport —

**Sport Wireless Earphones
User Manual**

Introduction

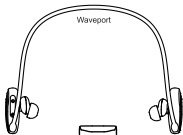
Thank you for choosing the Sport Wireless Earphones. This Manual will guide you through everything to get up. Please read through the manual before using the earphones.

- 1.Keep the earphones away from sharp edges, uneven surfaces,metal components and anything else which could damage your earphones.
- 2.Do not modify, repair or disassemble your earphones without professional instruction.
- 3.Do not clean your earphones with corrosive or volatile liquid.
- 4.Do not use your earphones in a hazardous environment.
- 5.Keep the earphones, accessories and other package contents away from children and pets to prevent accidents from happening.

Inside the Box



Adjustable Strap



Waveport



Charging Cradle



USB Charging Cable



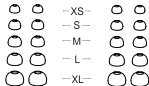
Operation Guides



Carry Pouch



Earhooks



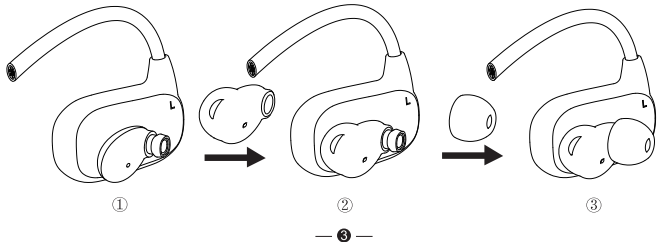
Earplugs

Omniseal
Waterproof Earplugs

- 1 X Sport Wireless Earphones
- 1 X USB Charging Cable
- 1 X Adjustable Strap
- 1 X Carry Pouch
- 1 X User Manual
- 1 X Note Card
- 1 X Note Brochure
- 5 X Eartips
- 3 X Earhooks
- 5 X Omniseal Waterproof Eartips

For Better Fixation

Please remember to install the earhooks for fixation when you are going to do exercise.



Get Started

Power on: Press the “” button for 3 seconds to power on the device, blue LED light flashes slowly.

Enter the pairing mode: Begin with earphones powered off. Then hold down “” button (for 5 seconds) your earphones will then enter pairing mode, The light indicator will flash both red and blue alternately.

Increase Volume: Press “+” button.

Decrease Volume: Press “-” button.

Power Off: Press the “” for 3 seconds, LED light turns off.


Low battery warning: Red LED light flashes

MP3 Normal Play: Press “” button to switch to mp3 player normal play mode.

MP3 Shuffle Play: Press “” button for 2 seconds to switch to mp3 player shuffle play mode.

Charging: Charge the earphones via USB cable, the light indicator will be red.

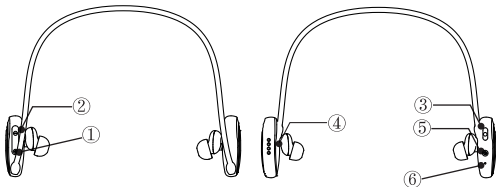
Light indicator will be blue when fully charged.

Answer call: Press the “” to answer a call.

End Call: Press the “” to end a call.

Reject call: Double press the “” button to reject a call.

The wire



- ① - Volume up •
- ② - Volume down •
- ③ - Play / Stop •
 - Last-call return • •
 - Answer / Hang up •
 - MP3 shuffle play •
- ④ - Contact point charging
- ⑤ - Power • — •
 - Switch MP3
 - and Bluetooth •
- ⑥ - Microphone

Operation



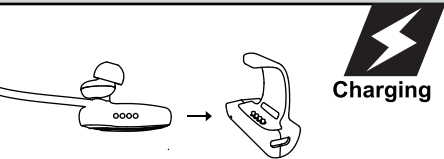
Bluetooth/SD card	:		Switch
PLAY/PAUSE	:		Click PLAY
SKIP FORWARD	:		Hold + 2s
SKIP BACKWARD	:		Hold - 2s
VOLUME UP	:		Click +
VOLUME DOWN	:		Click -
RESET	:		Hold 8s



RESET :   Hold 8s

If your waveport crashes, please press and hold the power button for 8 seconds to restart waveport.

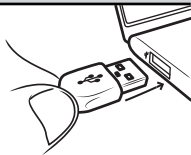
Charging your device / Music Download



Contact point charging

Please charge the earphones via USB charging cable, the light indicator will be red whilst charging and the indicator will turn blue once earphones are fully charged.

The earphones will be fully charged within 2 hours, as over charging could decrease battery life.

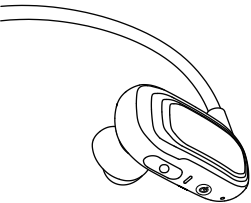


Music Download

Please download music via USB cable. After connecting to waveport, press "⏪" to begin your download trip.

Remember to press "⏪" to remove the SD card.

Product introduction



There are multiple sizes of stabilizers and ear gels to ensure you get the best fit.

Stabilizers are marked with an L for the left hand side and an R for the right hand side.

To change the ear gels, squeeze and push onto the stem.

The best sound comes from the best fit.

Functional Characteristics



Waterproof

The Earphone is waterproof when the charge port is **fully closed**. The waterproofing prevents sweat and water from getting into your earphones.

Notes on use

IPX7: Protected against water immersion—Immersion for 30 minutes at a depth of 1 meter. Liquids that the water resistant performance specifications apply to are as follows.

Applicable

Fresh water, tap water, perspiration, pool water

Not applicable

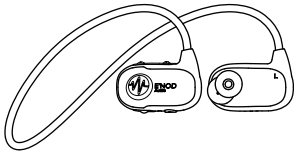
Liquids other than those above (examples: soapy water, detergent water, water with bath agents, shampoo, hot spring water, etc.)

Technical Specifications



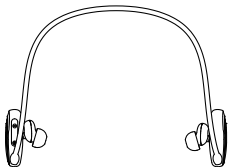
Waveport

- Play time: 3-5h
- Charge time: 1-2h
- Talk time: 6h
- Wireless Range: 33 feet
- Built-in Battery: 120mAh
- Size: (L*W*H) 42*23*13 mm
(Wire length) 388 mm
- IPX7 high strength waterproof for swimming Bluetooth earphone



Bluetooth Connection

1. The earphones are able to connect with mobile devices and computers via Bluetooth.
2. Start your earphones and enter pairing mode.
3. Turn on the Bluetooth function on your device, then look for "E'NOD Waveport" from the found devices to connect. If your device tells you to enter a password, please enter "0000" as the pairing code.
After the first successful pairing your earphones will connect with your device automatically every time.
4. There will be a voice guide when successfully connected. You can start to enjoy music now.





www.enod-audio.com

FCC Information and Copyright

This equipment has been tested and found to comply with the limits for a Class B digital device, pursuant to part 15 of the FCC Rules. These limits are designed to provide reasonable protection against harmful interference in a residential installation. This equipment generates, uses and can radiate radio frequency energy and, if not installed and used in accordance with the instructions, may cause harmful interference to radio communications. However, there is no guarantee that interference will not occur in a particular installation. If this equipment does cause harmful interference to radio or television reception, which can be determined by turning the equipment off and on, the user is encouraged to try to correct the interference by one or more of the following measures:

- Reorient or relocate the receiving antenna.
- Increase the separation between the equipment and receiver.
- Connect the equipment into an outlet on a circuit different from that to which the receiver is connected.
- Consult the dealer or an experienced radio/TV technician for help.

This device complies with part 15 of the FCC Rules. Operation is subject to the following two conditions: (1) This device may not cause harmful interference, and (2) this device must accept any interference received, including interference that may cause undesired operation.

changes or modifications not expressly approved by the party responsible for compliance could void the user's authority to operate the equipment. This equipment complies with FCC radiation exposure limits set forth for an uncontrolled environment. The device has been evaluated to meet general RF exposure requirement.

The device can be used in portable exposure condition without restriction.