

Annex 3: Internal photographs of EUT
to T E S T R E P O R T
No.: 17-1-0060101T06a

According to:

FCC Regulations

- Part 15.205
- Part 15.207
- Part 15.209
- Part 15.247

for

Viessmann Werke GmbH & Co. KG

Vitoconnect OT2

FCC ID: 2AIZ9-VC0218







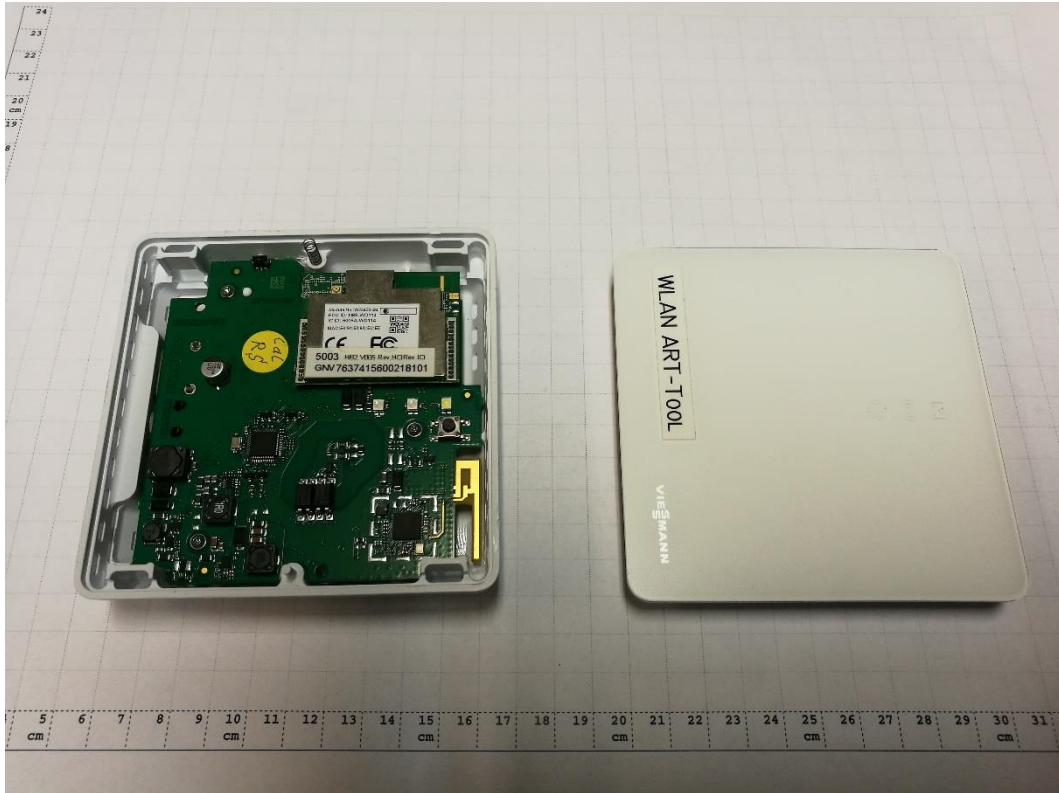
Laboratory Accreditation and Listings		
 Deutsche Akkreditierungsstelle D-PL-12047-01-01 Accredited EMC-Test Laboratory	 Industry Canada Reg. No.: 3462D-1 Reg. No.: 3462D-2 Reg. No.: 3462D-3	 Voluntary Controls for Electromagnetic Emissions Reg. No.: R-20013, C-20009, T-20006, G-20013
 AUTHORIZED RF LABORATORY	 Authorized Test Lab Lab Code: 20011130-00	 FEDERAL COMMUNICATIONS COMMISSION USA MRA US-EU 0003
accredited according to DIN EN ISO/IEC 17025		
CETECOM GmbH Laboratory Radio Communications & Electromagnetic Compatibility Im Teelbruch 116 • 45219 Essen • Germany Registered in Essen, Germany, Reg. No.: HRB Essen 8984 Tel.: + 49 (0) 20 54 / 95 19-954 • Fax: + 49 (0) 20 54 / 95 19-964 E-mail: info@cetecom.com • Internet: www.cetecom.com		

TABLE OF CONTENTS:

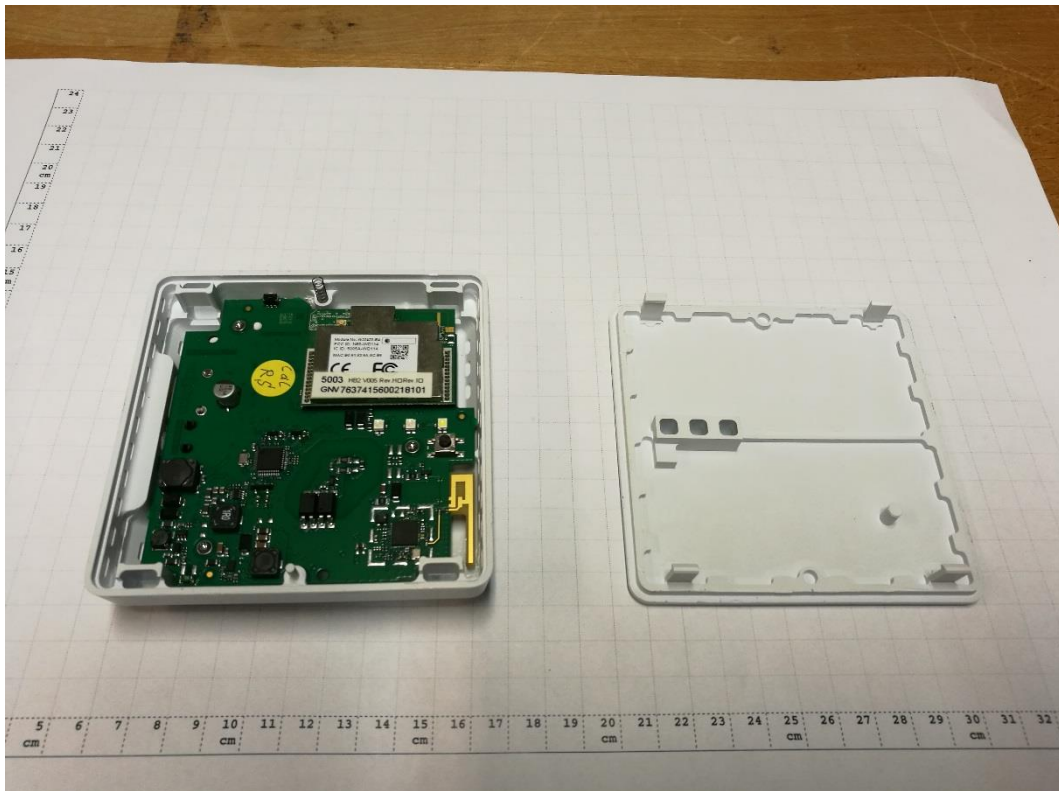
1. INTERNAL PHOTOGRAPHS..... 3
 1.1. Equipment Under Test (EUT) Assembly..... 3

1. Internal photographs

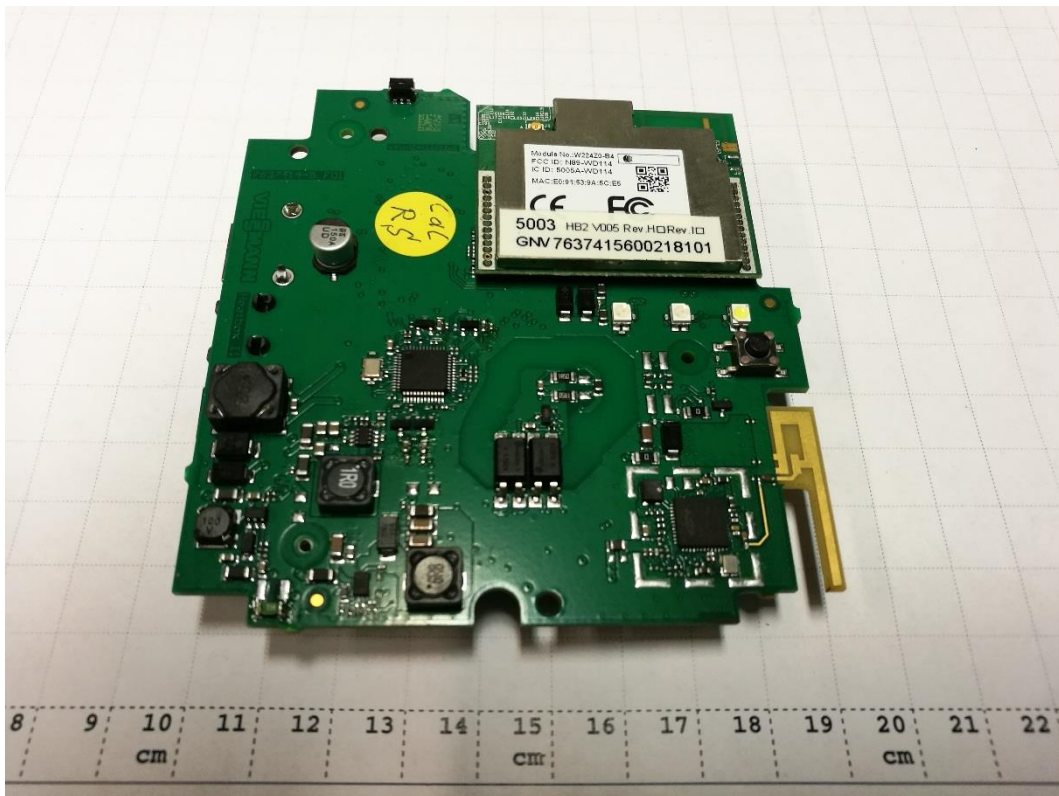
1.1. Equipment Under Test (EUT) Assembly



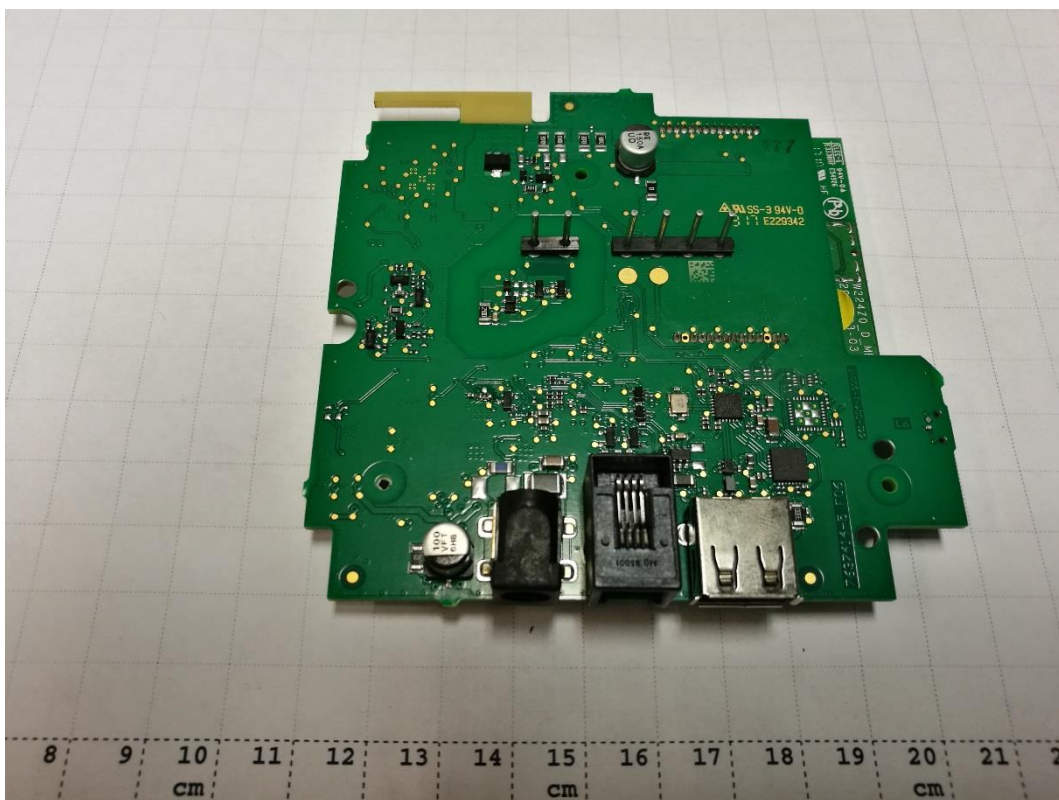
Photograph 1: Vitoconnect OT2 –Housing Top Side



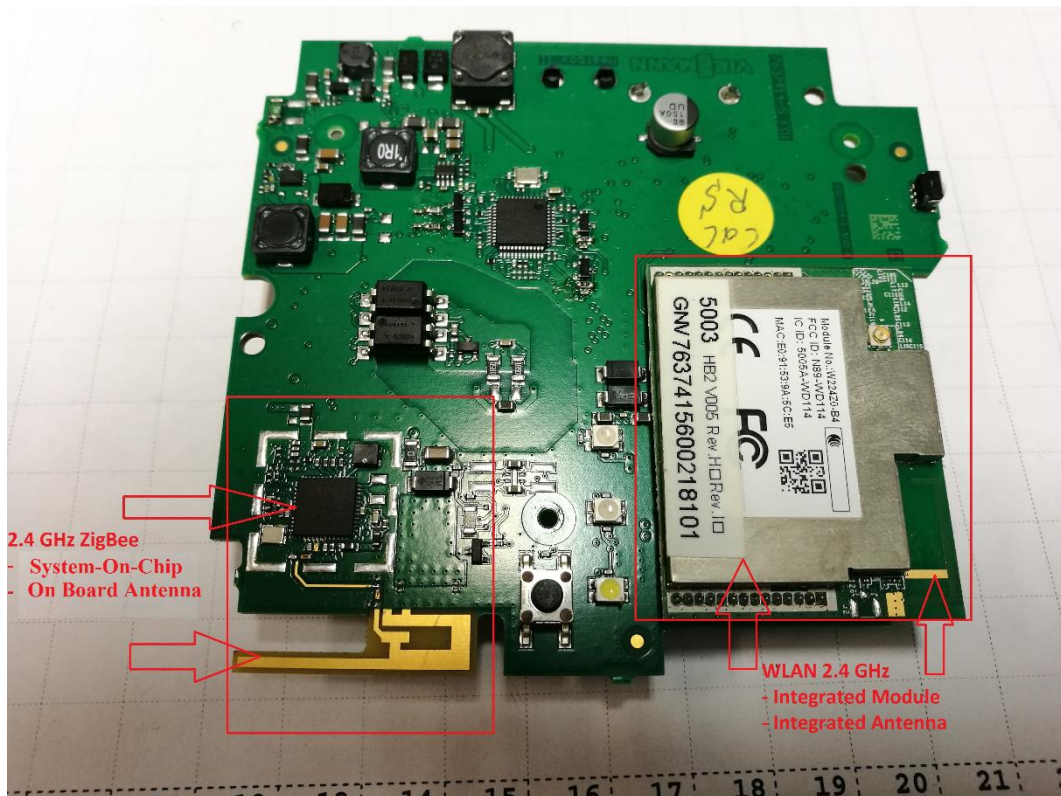
Photograph 2: Vitoconnect OT2 –Housing Top Side



Photograph 3: Vitoconnect OT2 –Main PCB Top Side



Photograph 4: Vitoconnect OT2 –Main PCB Bottom Side



Photograph 5: Vitoconnect OT2 –Radio Modules + Onboard Antennas