

Annex 3: Internal photographs of EUT
to TEST REPORT
No.: 17-1-0060101T11a

According to:

FCC Regulations

- Part 15.205
- Part 15.207
- Part 15.209
- Part 15.247

for

Viessmann Werke GmbH & Co. KG

Vitoconnect OT2

FCC ID: 2AIZ9-VC0218







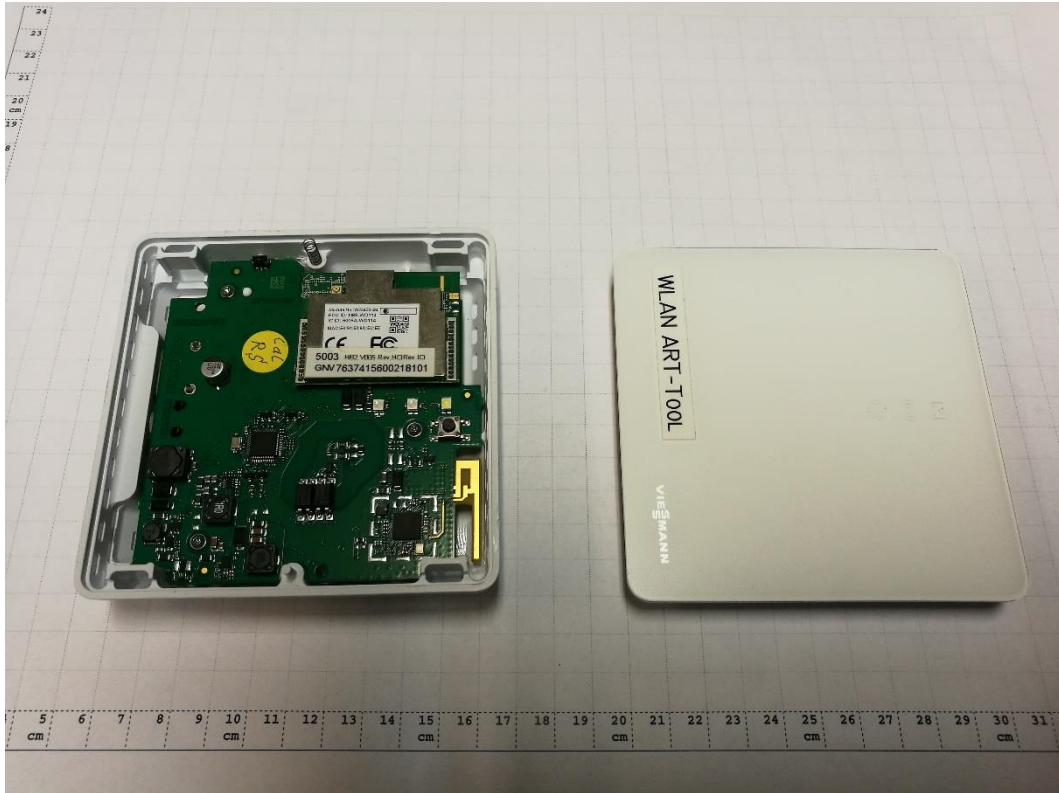
Laboratory Accreditation and Listings		
 <p>Deutsche Akkreditierungsstelle D-PL-12047-01-01</p> <p>Accredited EMC-Test Laboratory</p>	 <p>Industry Canada</p> <p>Reg. No.: 3462D-1 Reg. No.: 3462D-2 Reg. No.: 3462D-3</p>	 <p>Voluntary Controls for Electromagnetic Emissions</p> <p>Reg. No.: R-20013, C-20009, T-20006, G-20013</p>
 <p>AUTHORIZED RF LABORATORY</p>	 <p>Authorized™ Test Lab</p> <p>Lab Code: 20011130-00</p>	 <p>FEDERAL COMMUNICATIONS COMMISSION USA</p> <p>MRA US-EU 0003</p>
accredited according to DIN EN ISO/IEC 17025		
<p align="center">CETECOM GmbH</p> <p align="center">Laboratory Radio Communications & Electromagnetic Compatibility Im Teelbruch 116 • 45219 Essen • Germany Registered in Essen, Germany, Reg. No.: HRB Essen 8984 Tel.: + 49 (0) 20 54 / 95 19-954 • Fax: + 49 (0) 20 54 / 95 19-964 E-mail: info@cetecom.com • Internet: www.cetecom.com</p>		

TABLE OF CONTENTS:

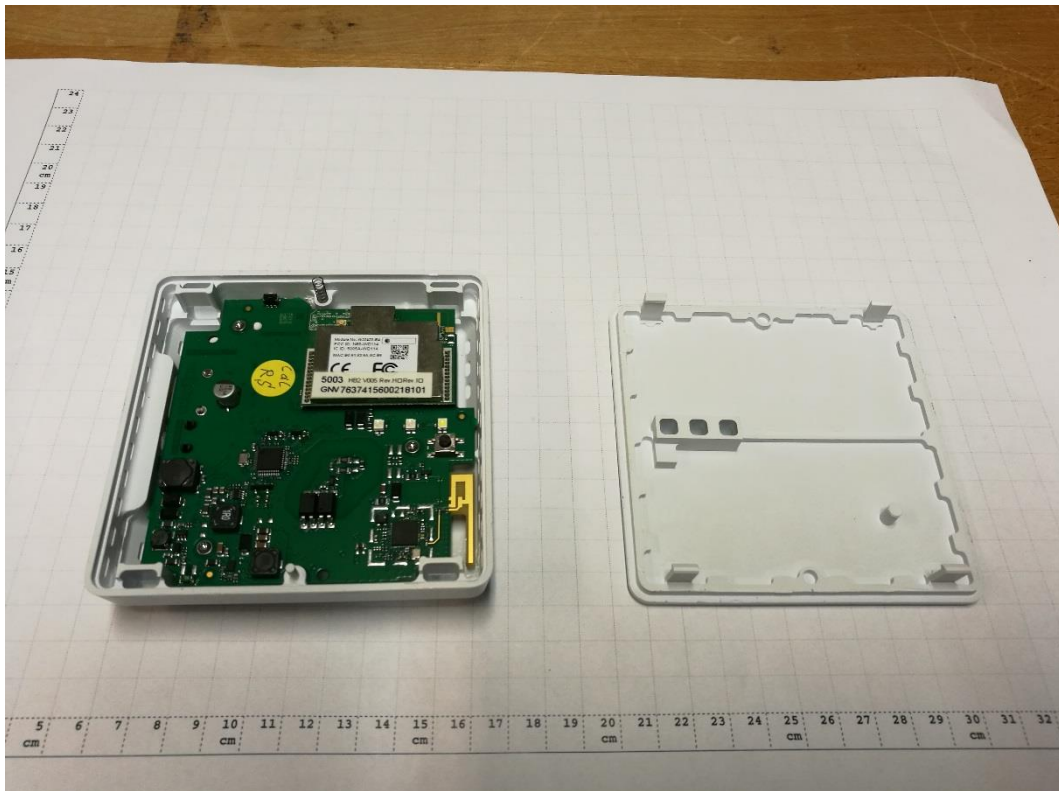
1. INTERNAL PHOTOGRAPHS..... 3
 1.1. Equipment Under Test (EUT) Assembly..... 3

1. Internal photographs

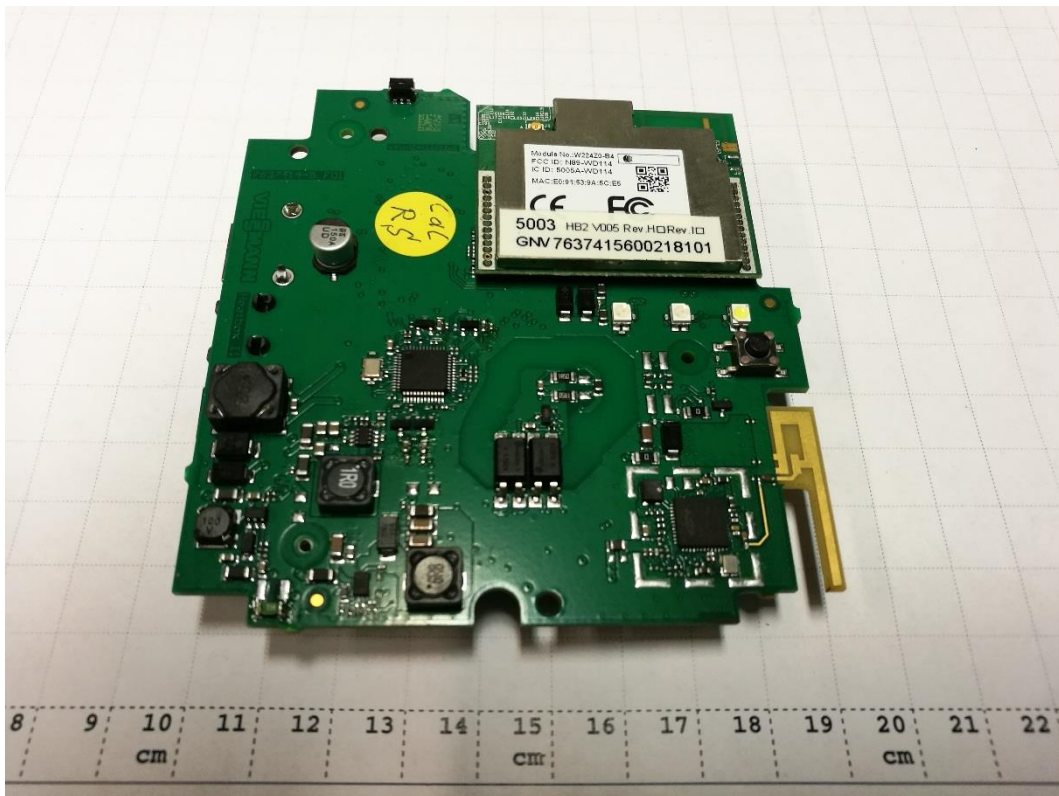
1.1. Equipment Under Test (EUT) Assembly



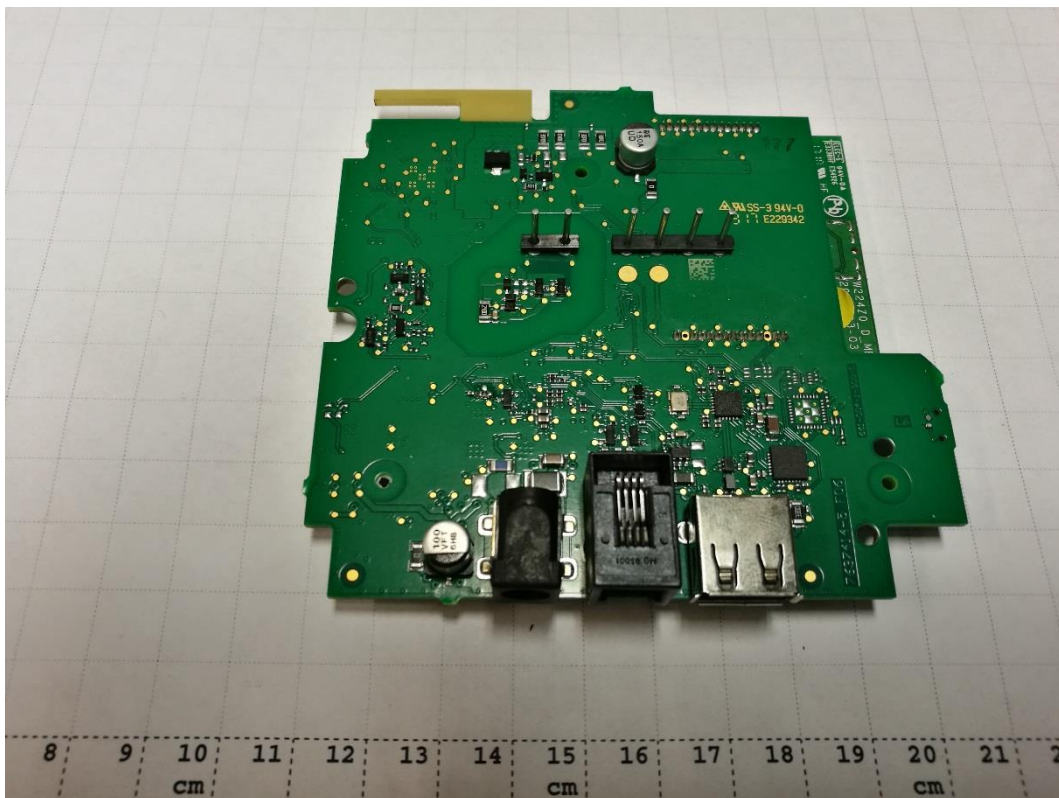
Photograph 1: Vitoconnect OT2 –Housing Top Side



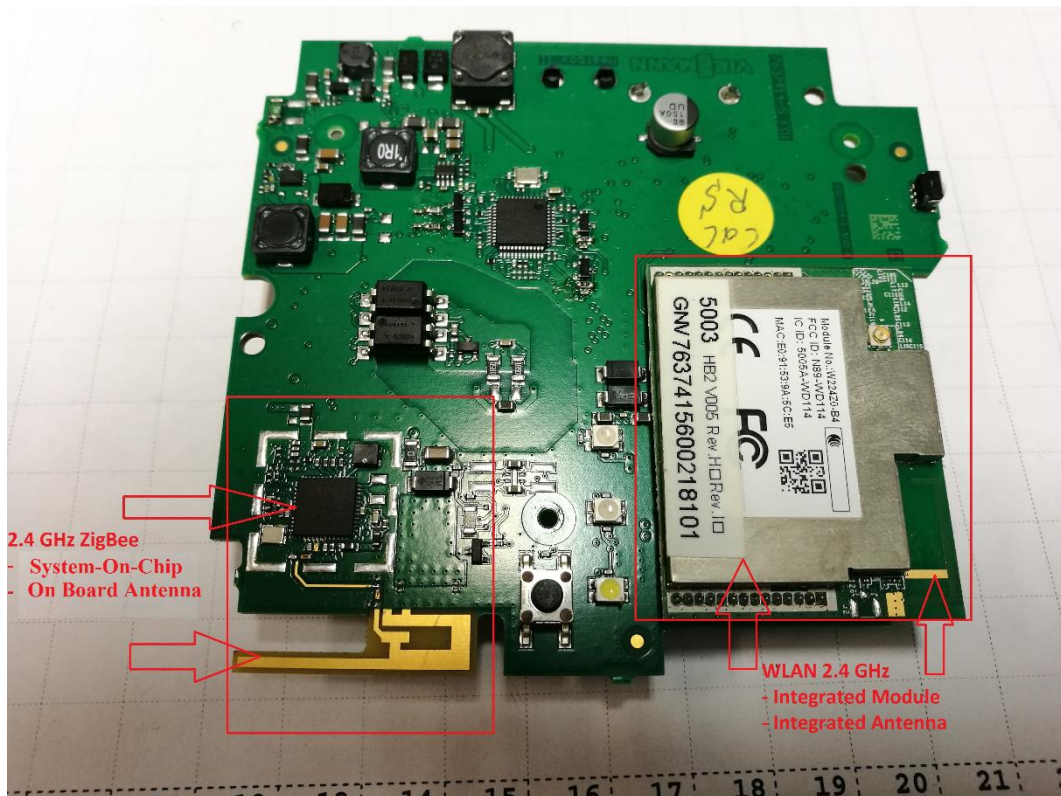
Photograph 2: Vitoconnect OT2 –Housing Top Side



Photograph 3: Vitoconnect OT2 –Main PCB Top Side



Photograph 4: Vitoconnect OT2 –Main PCB Bottom Side



Photograph 5: Vitoconnect OT2 –Radio Modules + Onboard Antennas