

LBT603

PLEASE PRINT ON MATTE PAPER

PAPER WEIGHT 40GSM

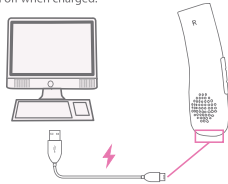
FRONT

05 Using the Headphones (cont'd)

Charging the Headphones

To charge the headphones, attach the small end of the micro USB cable to the micro USB charging port on the underside of the right headphone. Attach the large end to a USB adaptor, battery pack, or USB port on a computer.

The LED indicator will turn RED while charging and turn off when charged.



Make sure you charge your headphones for at least 2-3 hours before using them for the first time.

06 Additional Warnings and Precautions

READ THIS MANUAL CAREFULLY AND SAVE

Caution: Any changes or modifications not expressly approved could void the user's authority to operate the equipment.

FCC Part 15:

This device complies with Part 15 of the FCC Rules. Operation is subject to the following two conditions:

- (1) This device may not cause harmful interference, and
- (2) this device must accept any interference received, including interference that may cause undesired operation.

This equipment complies with FCC radiation exposure limits set forth for an uncontrolled environment.

This transmitter must not be co-located or operating in conjunction with any other antenna or transmitter.

Note: This equipment has been tested and found to comply with the limits for a Class B digital device, pursuant to part 15 of the FCC Rules. These limits are designed to provide reasonable protection against harmful interference in a residential installation. This equipment generates, uses and can radiate radio frequency energy and, if not installed and used in accordance with the instructions, may cause harmful interference to radio communications. However, there is no guarantee that interference will not occur in a particular installation. If this equipment does cause harmful interference to radio or television reception, which can be determined by turning the equipment off and on, the user is encouraged to try to correct the interference by one or more of the following measures:

- Reorient or relocate the receiving antenna.
- Increase the separation between the equipment and receiver.
- Connect the equipment into an outlet on a circuit different from that to which the receiver is connected.
- Consult the dealer or an experienced radio/TV technician for help.



07 Limited Warranty

90 Days Limited Warranty

In the unlikely event that this product is defective, or does not perform properly, you may within ninety (90) days from your original date of purchase return it to the authorized service center for repair or exchange.

TO OBTAIN WARRANTY SERVICE:

- Call the Customer Support number located below, or go to our website portal to receive an SRD number.
 - Provide proof of the date of purchase within the package (dated bill of sale).
 - Prepay all shipping costs to the authorized service center, and remember to insure your return.
 - Include a return shipping address (no P.O. Boxes), a telephone contact number, and the defective unit within the package.
 - Describe the defect or reason you are returning the product.
- Your product will be repaired or replaced, at our option, for the same or similar model of equal value if examination by the service center determines this product is defective. Products received damaged as a result of shipping will require you to file a claim with the carrier.

The shipping address of the authorized service center is:

c/o Customer Service Dept. 36
c/o Southern Telecom
400 Kennedy Drive
Sayreville NJ 08872

Should you have any questions or problems concerning this product, please contact our customer service department at:

Customer Support:
☎ Phone: 1-877-768-6481
Monday-Friday 8AM-5PM(EST)
www.southern telecom.com
Click on "Product Support"

Warranty service not provided

The company does not cover damage resulting from accident, misuse, abuse, improper installation or operation, lack of maintenance, or other causes not within the scope of the warranty. This warranty is voidable if the product is altered, opened, altered or repaired by anyone other than the authorized service center. Products being returned to the authorized service center for repair must be in original packaging.

Limitation of Warranty

THE WARRANTY DESCRIBED ABOVE IS THE ONLY WARRANTY AVAILABLE TO THE PRODUCT. ALL OTHER WARRANTIES, EXPRESS OR IMPLIED, INCLUDING ALL IMPLIED WARRANTIES OF MERCHANTABILITY OR FITNESS FOR A PARTICULAR PURPOSE ARE HEREBY DISCLAIMED. THE WARRANTY DESCRIBED ABOVE IS THE ONLY WARRANTY OF MERCHANTABILITY OR FITNESS FOR A PARTICULAR PURPOSE. THE WARRANTY DESCRIBED ABOVE IS THE ONLY WARRANTY OF MERCHANTABILITY OR FITNESS FOR A PARTICULAR PURPOSE. THE WARRANTY DESCRIBED ABOVE IS THE ONLY WARRANTY OF MERCHANTABILITY OR FITNESS FOR A PARTICULAR PURPOSE.

A RETURN OR REFUND MAY BE PROVIDED UNDER THE WARRANTY IF THE FOLLOWING REMEDY OF THE CONSUMER, AT THE DISCRETION OF THE COMPANY, IS NOT SUFFICIENT TO RESOLVE THE ISSUE. THE COMPANY SHALL NOT BE LIABLE FOR INCIDENTAL OR CONSEQUENTIAL DAMAGES RESULTING FROM THE USE OF THE PRODUCT OR ARISING OUT OF ANY BREACH OF ANY EXPRESS OR IMPLIED WARRANTY ON THE PRODUCT. THE DECLARATION OF WARRANTY AND THE WARRANTY ARE COVERED BY THE LAWS OF THE STATE OF NEW YORK. DESPITE TO THE EXTENT PERMITTED BY APPLICABLE LAW, ANY IMPLIED WARRANTY OF MERCHANTABILITY OR FITNESS FOR A PARTICULAR PURPOSE OR THE PRODUCT IS LIMITED TO THE APPLICABLE WARRANTY PERIOD SET FORTH ABOVE.

Some states do not allow the exclusion or limitation of incidental or consequential damages, or limitations on how long an implied warranty lasts to the above limitations or exclusions may not apply to you. This warranty gives you specific legal rights, and you also may have other rights that vary from state to state.

Limited Too

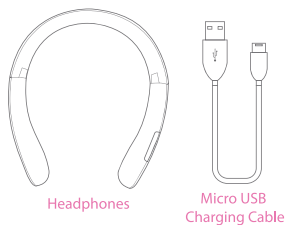
Glitterbomb
Bluetooth Headset

LBT603



If you have any questions, call 1-877-768-6481 | www.southern telecom.com and click on "Product Support"

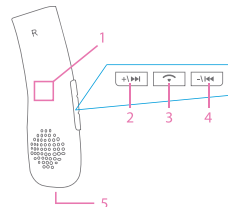
01 In the Box



Headphones

Micro USB Charging Cable

02 Location of Controls



1. LED Indicators
2. [Volume] Button:
 - Long Press - Skip to next song
 - Quick Press - Increase volume
3. [Power/Play/Pause] Button:
 - Long Press - Power ON/OFF
 - Quick Press - Play/Pause media
 - Quick Press - Answer/end phone call
4. [Previous/Next] Button:
 - Long Press - Skip to previous song
 - Quick Press - Decrease volume

(Underside)

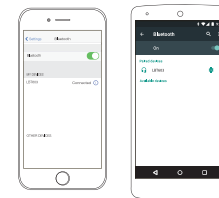
5. Micro USB Charging Port

03 Pairing the Headphones

1. Long press the [Power/Play/Pause] button. A voice will be heard and the LED indicator beneath it will flash RED and BLUE.
2. Set your Bluetooth-enabled device to search for Bluetooth devices. When the Bluetooth-enabled device finds the headphones, select "LBT603" from the list of found devices.
3. After a successful pairing, a voice will be heard indicating that the device is paired and the LED indicator will slowly flash BLUE.

On an iPhone or Android Device

• Go to SETTINGS > BLUETOOTH (make sure Bluetooth is turned ON)



The screenshots above are typical of many current Bluetooth devices. Your Bluetooth-enabled device's interface and interaction with the Headphones may differ slightly from the illustrations above.

To re-pair the Bluetooth connection, keep your Bluetooth-enabled device within 20' (6m) of the Headphones.

04 Using the Headphones

Powering ON/OFF

- To turn the headphones ON, long press the [Power/Play/Pause] button.
- To turn the headphones OFF, long press the [Power/Play/Pause] button.

Adjusting Volume

- Quick press the [Volume+] button to increase volume.
- Quick press the [Volume-] button to decrease volume.

Playing Media

To enjoy music on your headphones, make sure you are paired to a Bluetooth-enabled device. Once paired, you can control media playback and volume adjustment with the controls on your paired device or with the headphones.

Playing/Pausing Media

- To pause media playback, press the [Power/Play/Pause] button.
- To resume media playback, press the [Power/Play/Pause] button, again.

Skipping Tracks

- To skip to the previous track, long press the [Previous/Next] button.
- To skip to the next track, long press the [Previous/Next] button.

Phone Calls

- To answer an incoming phone call, quick press the [Power/Play/Pause] button.
- To end a phone call, quick press the [Power/Play/Pause] button, again.
- To redial the last number called, double press the [Power/Play/Pause] button.
- Long press the [Power/Play/Pause] button to reject an incoming phone call.

Inside