

# OFF-ROAD AMPHIBIOUS

**WARNING:**  
CHOKING HAZARD - small parts.  
Not for children under 3 years.

8+ AGES  
CE

\* Please read entire manual prior to operation. \* Keep box and manual for future reference.

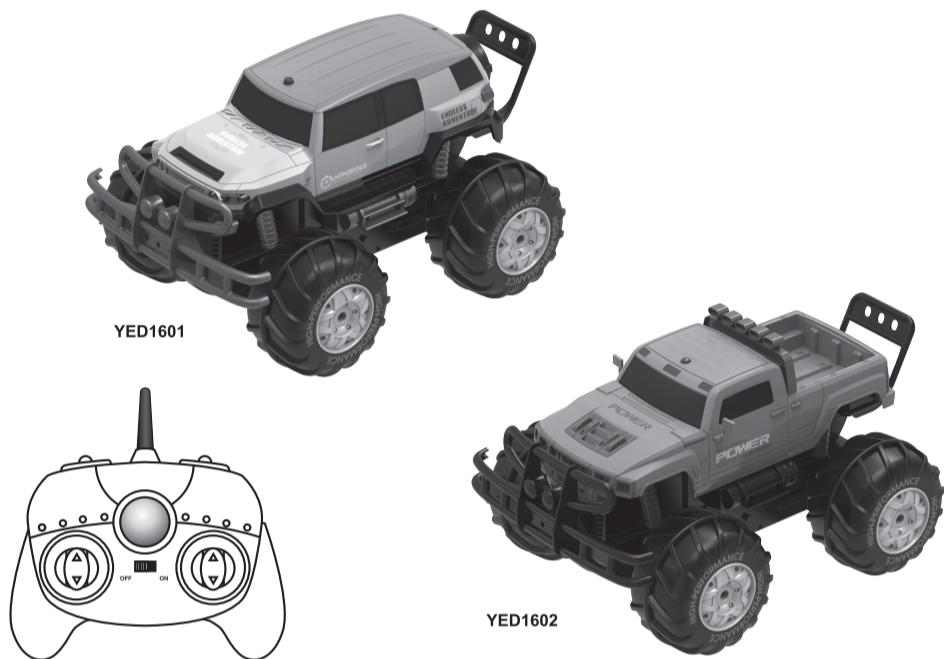
## Safety precautions:

- USED UNDER CLOSE SUPERVISION OF ADULT!
- Always select a safe place to play. Never drive your vehicle near the street.
- Operate only in fresh water with little to no current.
- Do not operate in water during heavy winds.
- While in operation, keep fingers, hair and loose clothing away from tires, wheel hubs or motors.
- Never operate in salt water.

Changes or modifications not expressly approved by the party responsible for compliance could void the user's authority to operate the equipment.

This equipment has been tested and found to comply with the limits for a Class B digital device, pursuant to Part 15 of the FCC Rules. These limits are designed to provide reasonable protection against harmful interference in a residential installation. This equipment generates, uses and can radiate radio frequency energy and, if not installed and used in accordance with the instructions, may cause harmful interference to radio communications. However, there is no guarantee that interference will not occur in a particular installation. If this equipment does cause harmful interference to radio or television reception, which can be determined by turning the equipment off and on, the user is encouraged to try to correct the interference by one or more of the following measures:

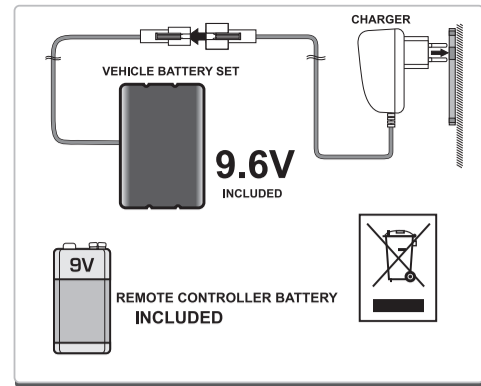
- Reorient or relocate the receiving antenna.
- Increase the separation between the equipment and receiver.
- Connect the equipment into an outlet on a circuit different from that to which the receiver is connected.
- Consult the dealer or an experienced radio/TV technician for help.



P.1

## BATTERY CAUTION:

- Alkaline battery is recommended
  - Batteries are to be inserted with the correct polarity.
  - Non-rechargeable batteries are not to be recharged.
  - Rechargeable batteries are to be removed from the toy before being charged.
  - Rechargeable batteries are only to be charged under adult supervision.
  - Always turn the unit off when not in use to preserve batteries.
  - Remove batteries if product will not be used for long periods of time.
  - If the unit malfunctions, please remove the batteries for one minute and reinstall again.
  - If the malfunctions persist, please replace with new batteries.
- BATTERIES SHOULD BE INSTALLED BY ADULTS ONLY.**



## COMPONENT CHECKLIST



Vehicle ..... x1 PC  
Transmitter ..... x1 PC  
Screw ..... x1 PC

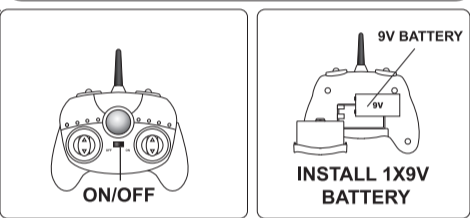
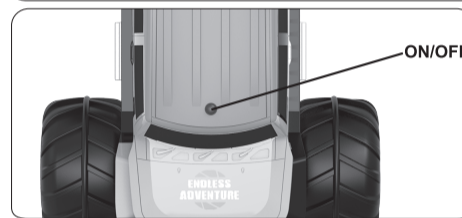
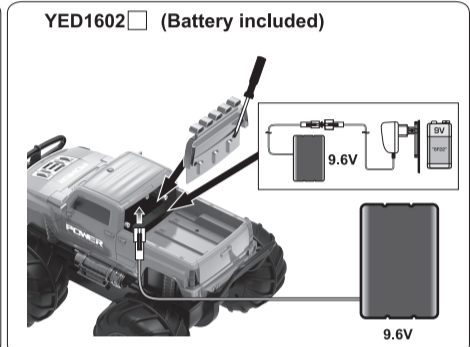
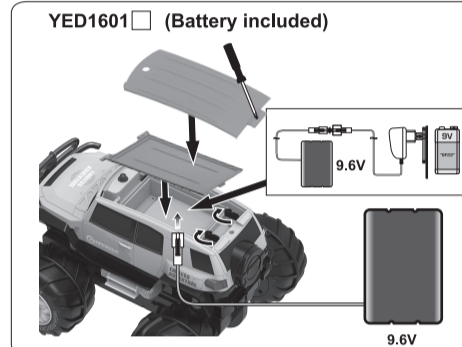
## BATTERY INSTALLATION

### Amphibious Vehicle

1. Make sure the power is off.
2. Unscrew and open the battery compartment on the top of the vehicle. And twist the two knobs inside in 90 degrees then you remove the inner protection cover.
3. Install the battery set (included) as shown.
4. Replace the battery compartment cover and tighten it up.

### Transmitter

1. Make sure the power switch is on the OFF position.
2. Slide the battery door as shown.
3. Put the 9V battery in the battery compartment as per the polarities shown inside.
4. Slide back the battery door as shown. Cover should click when locked in place.

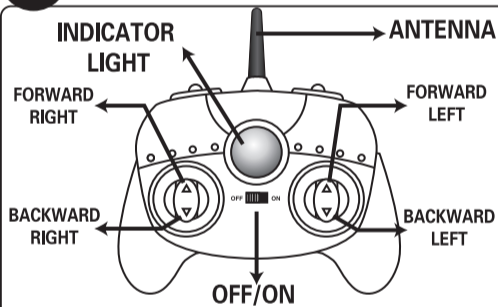


P.2

## 2.4G Transmitter and Car Matched

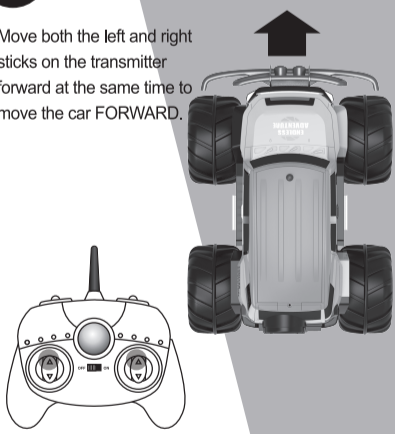
2.4GHz remote control need to make sure the "transmitter and car" matched by each other first before using: Turn on the power supply switch on the top of the car, then move the power supply switch of the remote controller to "ON" section, the indicator light will be constant on once they match successfully, then you can start enjoying the car.  
Note: If the indicator light flashes continuously, you need to turn off both the car and controller switch then restart until the light is not flashing.

## RC Controller



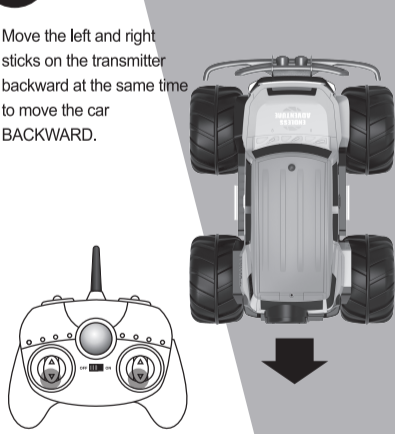
### How to Move Forward:

Move both the left and right sticks on the transmitter forward at the same time to move the car FORWARD.



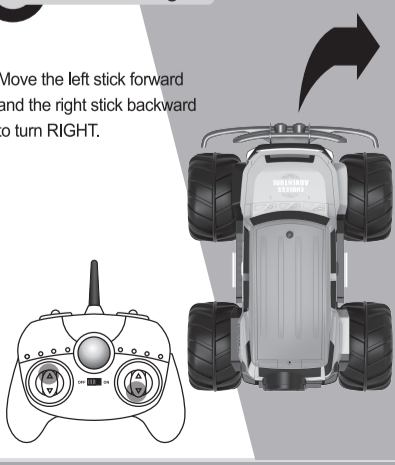
### How to Move Backward:

Move the left and right sticks on the transmitter backward at the same time to move the car BACKWARD.



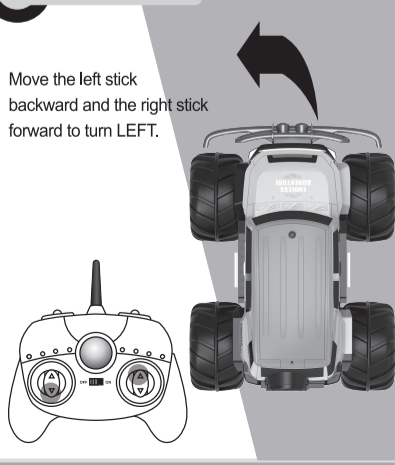
### How to Turn Right:

Move the left stick forward and the right stick backward to turn RIGHT.



### How to Turn Left:

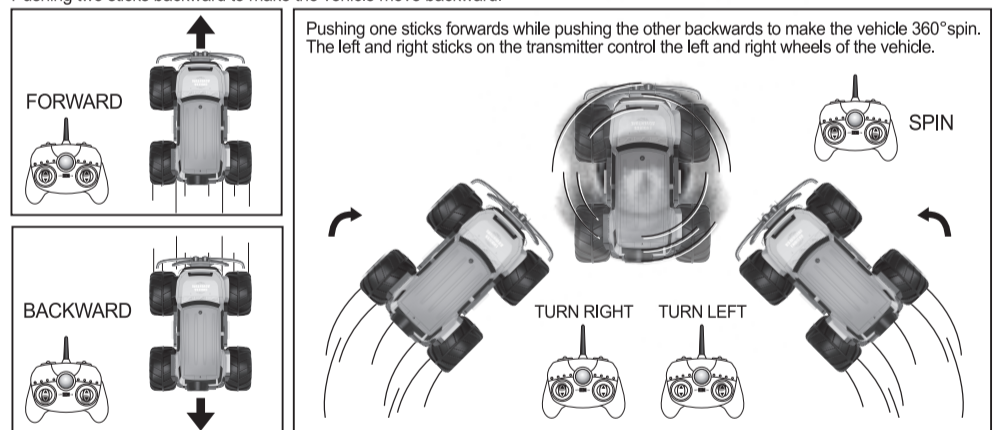
Move the left stick backward and the right stick forward to turn LEFT.



P.3

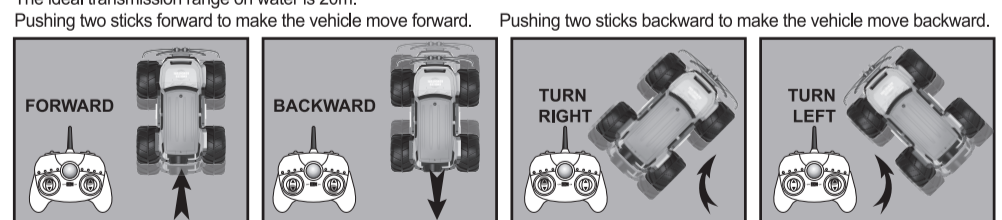
## Operation on land

Lights are OFF when vehicle unit is switched OFF, LED lights are ON when unit is switched ON, then you could start to operate your vehicle.  
The ideal transmission range is 50m.  
Pushing two sticks forward to make the vehicle move forward.  
Pushing two sticks backward to make the vehicle move backward.



## Operation on water

Lights are OFF when vehicle unit is switched OFF, LED lights are ON when unit is switched ON, then you could start to operate your vehicle. Make sure the waterproof device and battery cover are on a correct position before you put the vehicle on water.  
(To avoid fault, do not submerge the vehicle into water.)  
The ideal transmission range on water is 20m.



The left and right sticks on the transmitter control the left and right wheels of the vehicle on water.

## Important notes

1. Charge the rechargeable battery for 3-4 hours per time. The full battery can keep playing for 25 minutes on land or 20 minutes on water.
2. When your vehicle starts to lose power, it may lose functionality or performance. It's time for fresh batteries (or a recharge). Your vehicle's running time may change depending on your driving style.



P.4

How to operate?