

BS186FP

TWS Bluetooth Headset User Manual

Bluetooth headset should be used with the compatible devices which support Bluetooth wireless technology. This allows you make two calls and enjoy the music streaming at any time freely. Please read this user manual carefully before using the headset, and also read your device's user manual regarding the Bluetooth function, and pay attention to those important safety and maintenance information. Please keep the headset away from children.

Headset specifications

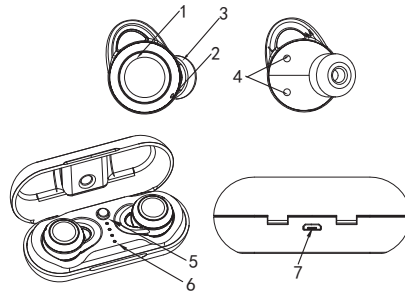
Bluetooth Version:	V5.0
Support:	HSP,HFP,A2DP,AVRCP
Audio Decoding Protocol:	SBC,AAC
Transmission Power:	Class 2
Operation Range:	Up to 10 meters
Frequency Range:	2.4GHz-2.48GHz
Battery of Headset:	45mAh Li-polymer Battery
Charging Voltage of Headset:	DC 5±0.25V
Charging Time of Headset:	About 1.5 hours
Music Playing Time: *	≥3 hours
Talk Time: *	≥3 hours
Standby Time: *	About 85 hours
Driver:	φ6mm
Driver sensitivity :	93db/1kHz
Driver impedance:	16Ω±15%
Driver frequency ring range:	20Hz-20kHz
Dimensions of single headset(mm):	L19.5×W19.5×H26
Weight of single headset(mm):	About 4.8g

Charging base specifications

Charging base battery specifications:	460mAh Li-polymer Battery
Charging base voltage:	DC 5±0.25V
Charging time of base:	About 2 hours
Charging Headset Times from	
Charging base:	2-3times
Charging base size (mm):	L80×W33×H31
Weight(Total):	About 58g

*The time mentioned above may vary due to user's operation mode and device settings.

Structure Sketch



- 1) MFB(multifunction button)
- 2) Indicator light(MIC)
- 3) Speaker
- 4) The charging contact point
- 5) ON/OFF for the base
- 6) Charging base indicator
- 7) Micro USB charging port

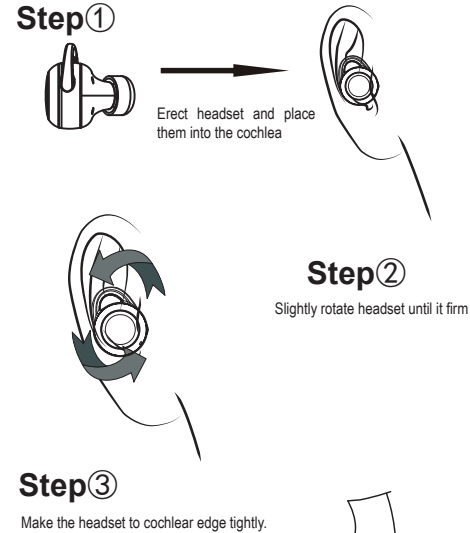
Headset status

Status No.	Status	Headset Performance
1	The Single Pairing headset(R)	The indicator light of headset(R) flashes red and blue alternately
2	TWS Pairing	After TWS pairing succeeded, the indicator light of right headset alternately flashing red and blue; When the right headset pairing successfully with mobile phone, the indicator light flashes blue once every 5 seconds
3	Standby Mode	The indicator light of the headset flashes blue once every 5 seconds
4	Call Mode	When in a call, the indicator light of the headset flashes red every 5 seconds
5	Headset Charging Mode	The indicator light of the headset is red when being charged, and will turn off automatically after being fully charged
6	Charging Base Charging Mode	The indicator lights of the charging base flashes when being charged, and four lights are on after being fully charged
7	Power On State	After power on the indicator light flashes blue for 3 times.
8	Power Off State	When power off the indicator light flashes red for 4 times.
9	Low Voltage Alarm State	The indicator light flashes red once every 20 seconds

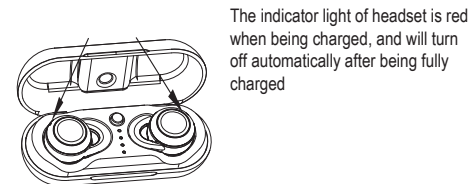
Identify according to L&R and wear the headset (R) and headset (L) respectively



Wearing Steps:



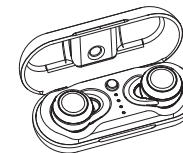
Charging Ways of Headset



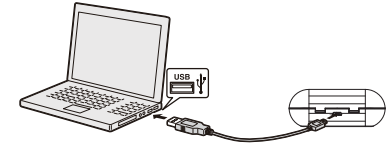
Put the headset (L) (R) to the corresponding position in the bottom of the charging base, and press the charging base switch.

Charging Ways of Charging Base

Use the USB charging cable to charge



Use the USB cable to connect with computer

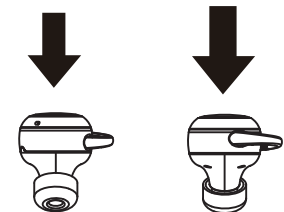


- Note 1: Check the charging device suits to the headset or not.
- Note 2: Use only the supplied charger to charge the headset, if using other device it may violate or the maintenance article of this product and may cause danger.
- Note 3: Do not attempt to force open the built-in battery as this could damage the headset.
- Note 4: A fully charged headset will lose its power automatically if left unused. It is recommended to charge the headset each three months.
- Note 5: Do not leave the headset in a too hot or too cold condition (best between -10°C and 50°C) which may affect the headset's operations although it is fully charged.
- Note 6: Do not dispose of the headset into fire or water.
- Note 7: Please bounce up the charging base switch if the headset idles for a long time to avoid power consumption.

Turning ON/OFF

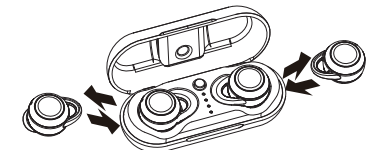
1 Method

In OFF MODE, press and hold headset(R) or headset(L) MFB for 2 seconds to turn on.
In ON MODE, press and hold headset(R) or headset(L) MFB for 5 seconds to turn off.



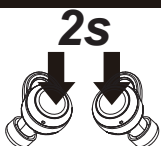
2 Method

Pick up the headsets from the charging base to turn on automatically. Put them back to power off and charge the headset. (Make sure the charging base switch is pressed down)



TWS Pairing

1



On OFF state, press MFB of headset (R) or headset (L) for 2 seconds to power on and waiting for about 10 seconds, the two headsets will enter auto-pairing mode. The two headsets connect with each other after few seconds, the headset (R) alternately flashing red and blue, and then open the phone's bluetooth device to search "BS186FP".

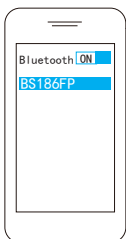
2

Pick up the two headsets from the charging base to power on and waiting for 10 seconds, the two headsets will enter auto-pairing mode. The two headsets connect



with each other after few seconds, the headset (R) alternately flashing red and blue, and then open the phone's bluetooth device to search.

Do as the above ways: 1 or 2, after TWS successfully paired: left headset prompts "left channel" and right headset prompts "right channel-pairing"



Cell phone begins to search for bluetooth devices (see the user guide of your phone for instructions). Mobile phone to search for "BS186FP" and select the "BS186FP".

Auto Transferring between R & L headset

TWS firstly use the default right headset as the main headset and left headset as the vice headset. But when the main headset is turned off, the vice headset will automatically connect with the mobile phone and can be used individually. And the turned-off headset will quickly reconnected with the main headset and work normally after restarting.

TWS Reconnected

Method1: Press headset (R) and (L) multifunction button at the same time for 2 seconds to power on → wait for several seconds and the two headsets will automatically connect → wait a few seconds for the headset to connect with the paired phone → re-connection successfully.

Method2: When you pick up the headset from the charging case after 3 seconds to power on → wait for a few seconds, the two headsets will automatically connect → wait for a few seconds, the headset will be linked with the paired mobile phone → re-connection successfully.

Note: • The main headset and vice headset speakers will emit "Connected", (L) prompts "Left Channel", (R) prompts "Right Channel" at the same time, and the main headset prompts "Second Device connected" after successful connection with the mobile phone.

• After the headset has used the switching function, both the left and the right headset can be used as the main ear, it will not affect the use.

Answering / Ending a Call

When incoming call, short press MFB of headset (R) or headset (L), the speaker prompts once "Du" to answer call; In call mode, long press MFB of headset (R) or headset (L) for 2 seconds heard twice "Du" to end a call.



Rejecting a call



Press and hold MFB of headset(R) or headset (L) for 2 seconds to reject the call, the speaker prompts twice "Du" and "call reject".

Siri or Google Assistant function



On standby mode or music playing state, double-click the secondary headset (L) function key, which can be heard once "Du".

Note: This feature only supports mobile phones with voice dial-up functions.

Two-call Handling

(Only support the mobile phone which has the function of handling two phones.)

- When you are answering a call, there is another call coming:
1. Long press and hold MFB of headset(R) for 2 seconds to end the current call and answer incoming call;
 2. Short press MFB of headset(R) to hold the current call and answer incoming call;
 3. After the second implementation, short press MFB of headset(R) to switch between two calls;
 4. After the second implementation, long press MFB of headset(R) for 2 seconds to end the current call, and long press MFB of headset(R) for 2 seconds to end the other call.

Note:

All the above operations have to respect the precondition supported Bluetooth hands free profile V1.5 and Phones are running holding function (Network services) from telecom.

Music Pause/Playing



On standby mode, shortly press MFB of headset(R) or headset(L) to play music.

On music playing state, double-click MFB of headset(R) to PAUSE music. But headset(L) can not pause music independently.



Adjusting the Volume

In call mode or music mode, shortly press MFB of the headset(R) to volume up and shortly press the headset(L) to volume down. Once "Du" can be heard when volume is up to maximum or minimum

Forward/Backward

In playing music, long press the (R) multi-function button for 3 seconds till hear the twice "DuDu" and release then next song; Long press the headset(L) multi-function button for 3 seconds till hear twice "Du Du". release after the prompt, then last song.

Delete Pairing Records on the Headset

In any state, press and hold the headset multi-function button for about 10 seconds (off state) → ON MODE (2 seconds) → Delete pairing records(10 seconds), until hearing the "Du" voice for 3 times, and the red/blue light flashes twice at the same time.

Function Instruction of Charging Base

The instruction of charging base indicator light

Four blue indicator lights, each of which represents 25% of the battery.

Charging base indicator light

On charging mode of charging base, flash blue indicator light.

- One light is always on, which means charging base battery power fully charged by 25%;
- Two lights mean charging base battery power has been fully charged by 50%;
- Three lights mean charging battery power fully charged by 75% ;
- Four lights mean charging base battery power fully charged by 100%.

Charging base battery display

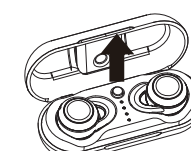
When no charging but opening the charging base, after four indicator flash in turn (about 1.5 seconds to complete flash), the indicator will light on for about 5 seconds to show how much battery is left (after 5 seconds, indicator lights all off).

- One light is always on, which means charging base battery power fully charged by 25%;
- Two lights mean charging base battery power fully charged by 50%;
- Three lights mean charging base battery power fully charged by 75%;
- Four lights mean charging base battery power fully charged by 100%.

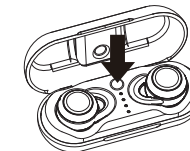
The instructions of headset charging power switch

1. When switch button is pressed, headsets charging position 5V probe is normal output and headsets can be charged normally. When switch button is bounced, headsets charging position 5V probe output off, headsets can not be charged and will automatically on. Please off headsets manually at this time. After headsets are off, they can be stored in charging base, which will not consume battery power of charging base.

2. If switch button is pressed and no use for a long time, headsets will run out of charging base battery power.



When the switch is bounce, is a raised state.



When the switch is pressed, is flush with the surface of the charging base.

Maintenance

- Do not use abrasive cleaning solvents to clean the headset.
- Do not allow the headset to touch with any sharp objects as this will cause scratching and damage
- Please keep headset away from high-temperature, humidity and dust.

Common Faults and Exclusion

Faults	Reasons	Solutions
Can not turn on	low battery protection	Charging headsets for 2-3 hours
Can not turn on by picking up the headset. No indicator light when headset being charged	Charging base low battery protection	Charging both the headsets and charging base for 2-3 hours
No sounds after pairing	Wrong pairing	Pairing again
The two headsets TWS pairing failure/TWS paired successful but can not find the headset(R)	Too many pairing records	Delete pairing records according to user manual
Charging base without indicator light when charging	DC power supply doesn't output power	Check whether the micro USB charging line is plugged or the power switch is on
Headsets without indicator light when charging	The headsets couldn't be charged in charging base	1)Checking headset charging interface whether has touched to POGO PIN of charging base and the location is correct or not. 2)Charging for charging base 3) whether the button is pressed state
Turning off automatically	Low battery	Charging headset for 2-3 hours
Headset echo	Volume is too loud or environment is noisy	Adjust the volume at phone or change a place
Noise in call	Environmental interference caused or distance between headset and mobile is too far	Change a place or move to close the headset and mobile
Low voice of the calling party	Wearing headset is wrong	Adjusting wearing position of headset
The headset no charging after put back to the charging base	The charging base without power, the headset will auto turn on and paired The headset charging power switch bounce	Charging for charging base Press the headphone charging power switch
	Wearing headset is wrong	Adjusting wearing position of headset

NOTE: This equipment has been tested and found to comply with the limits for a Class B digital device, pursuant to part 15 of the FCC Rules. These limits are designed to provide reasonable protection against harmful interference in a residential installation. This equipment generates uses and can radiate radio frequency energy and, if not installed and used in accordance with the instructions, may cause harmful interference to radio communications. However, there is no guarantee that interference will not occur in a particular installation. If this equipment does cause harmful interference to radio or television reception, which can be determined by turning the equipment off and on, the user is encouraged to try to correct the interference by one or more of the following measures:

- Reorient or relocate the receiving antenna.
- Increase the separation between the equipment and receiver.
- Connect the equipment into an outlet on a circuit different from that to which the receiver is connected.
- Consult the dealer or an experienced radio/TV technician for help

Changes or modifications not expressly approved by the party responsible for compliance could void the user's authority to operate the equipment. This device complies with Part 15 of the FCC Rules. Operation is subject to the following two conditions:

- (1) this device may not cause harmful interference, and
- (2) this device must accept any interference received, including interference that may cause undesired operation.