

Antenna Specifications

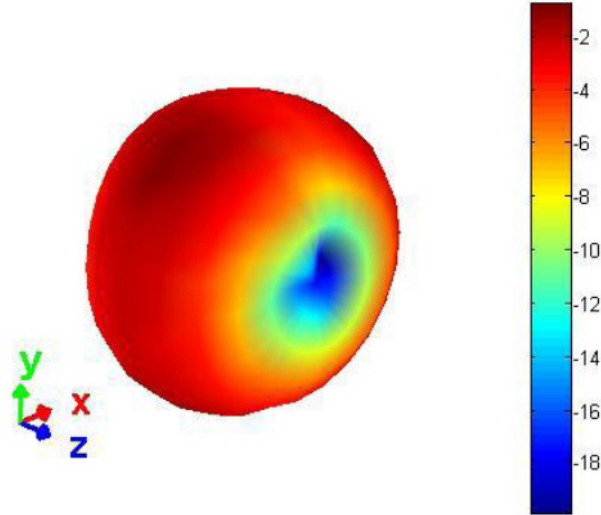
Antenna name:	2/3/4G Antenna, WiFi Antenna, BT Antenna, GPS Antenna
Manufactured by:	Shenzhen Jinhong Wireless Technology Co., LTD

Electrical Specification

	Frequency	Gain	Antenna Type	Impedance
2/3/4G Antenna	698–798MHz	0.80dBi	Internal Antenna/PIFA	50Ω
	824–960MHz	1.10dBi		
	1710–2170MHz	1.70dBi		
	2300–2400MHz	1.60dBi		
	2500–2690MHz	1.80dBi		
BT&WiFi Antenna	5GHz	2dBi	Internal Antenna/PIFA	50Ω
	BT/2.4GHz	1.8dBi	Internal Antenna/PIFA	
GPS Antenna	1575MHz	2dBi	Internal Antenna/ceramic	50Ω

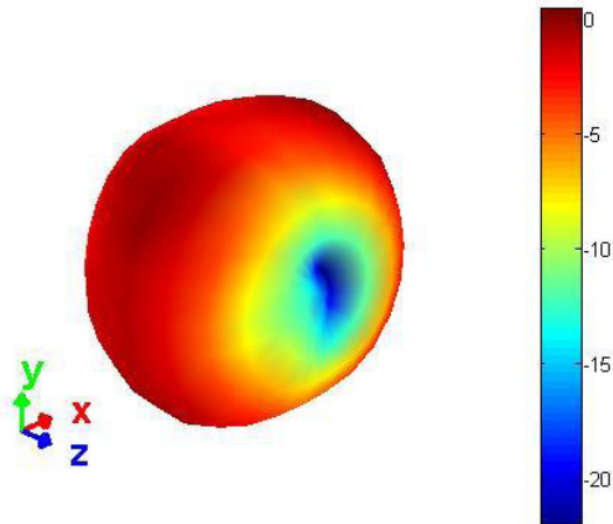
Antenna pattern

698 MHz – 798 MHz



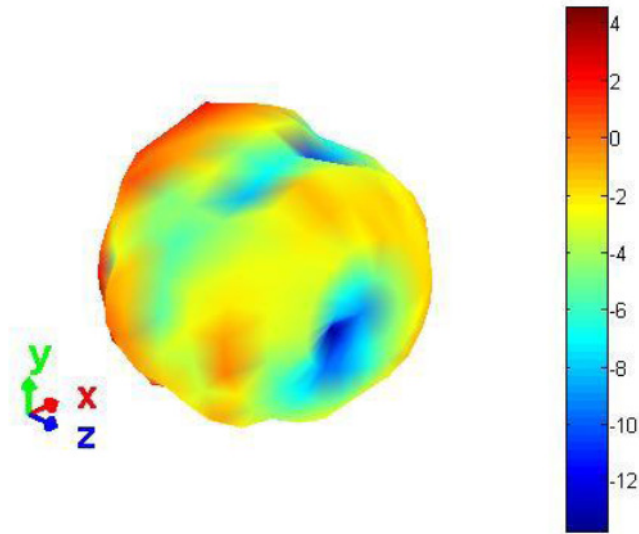
3D pattern at 734 MHz

824 MHz – 960 MHz



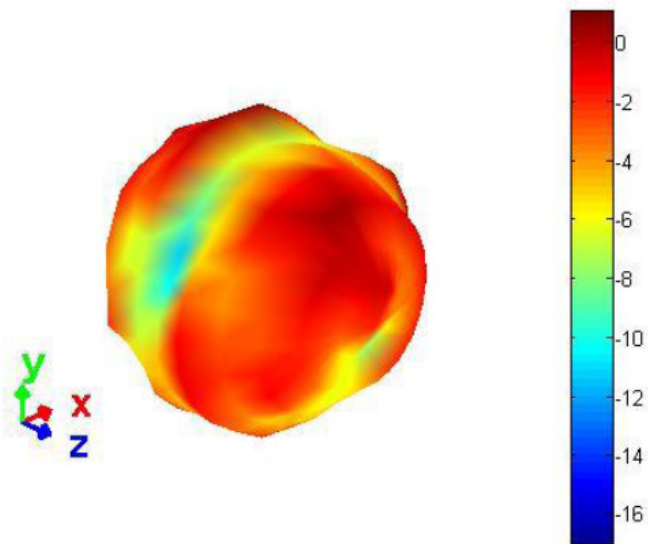
3D pattern at 900 MHz

1710 MHz - 2170 MHz



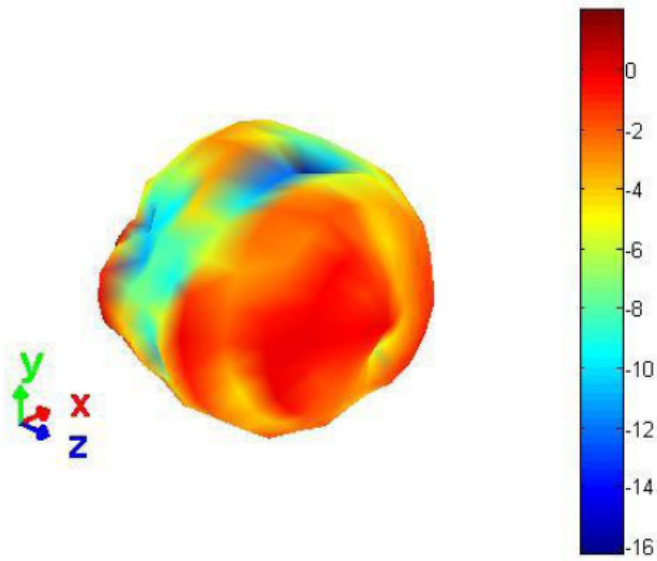
3D pattern at 1930 MHz

2300 MHz - 2400 MHz



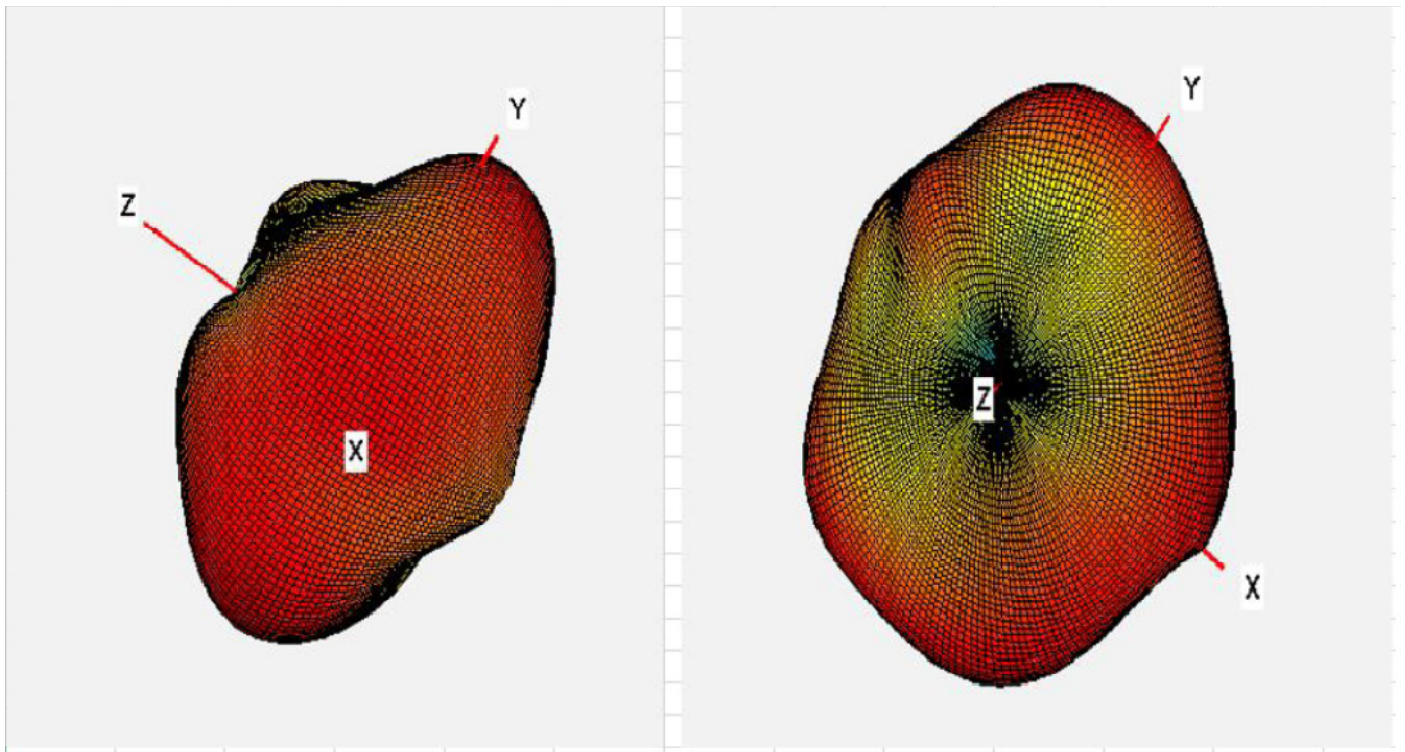
3D pattern at 2340 MHz

2500 MHz - 2690 MHz



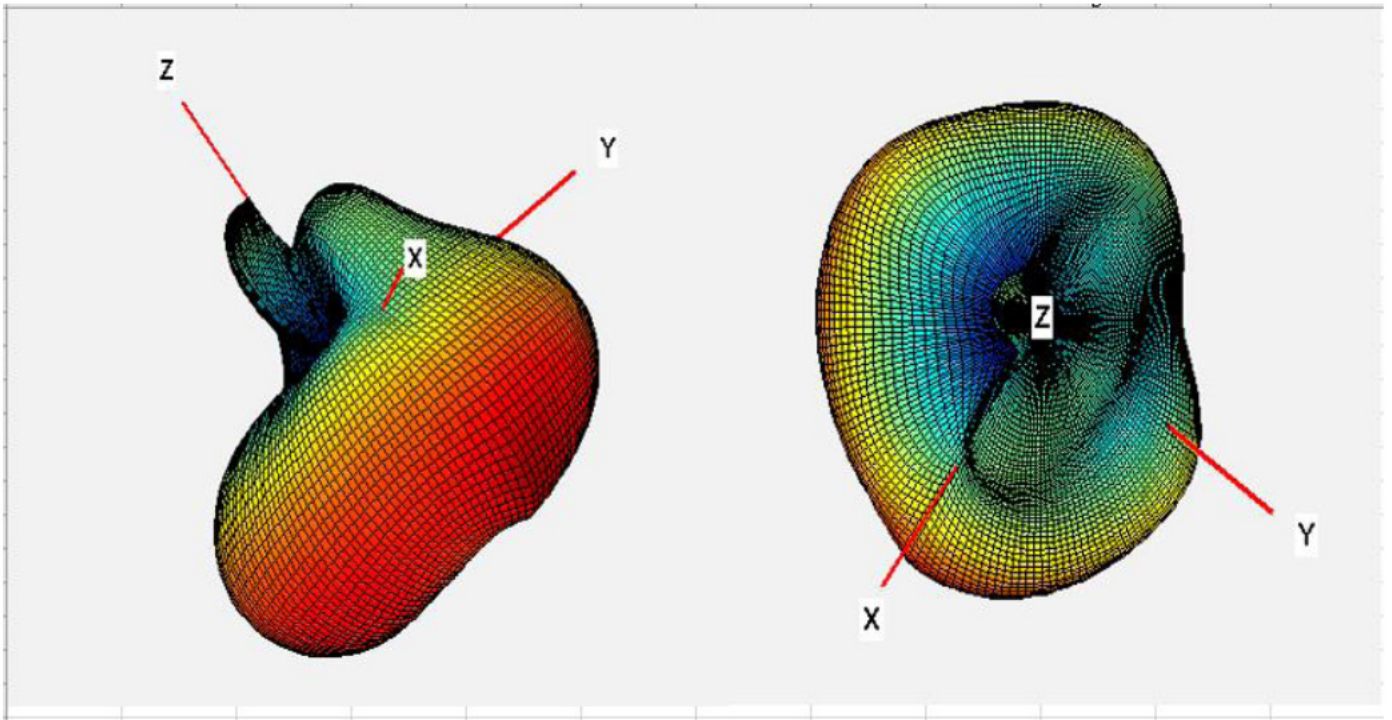
3D pattern at 2600 MHz

BT/2.4GHz WIFI

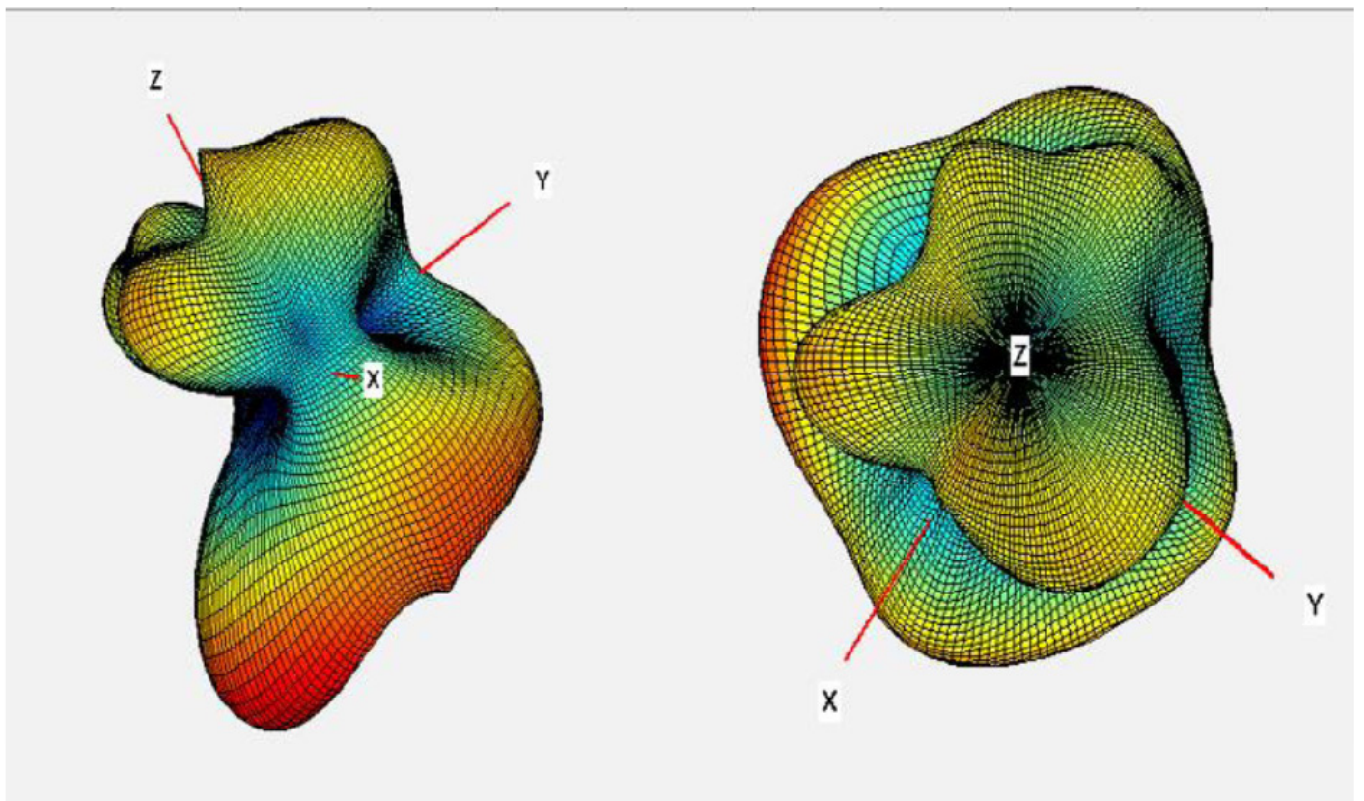


2400

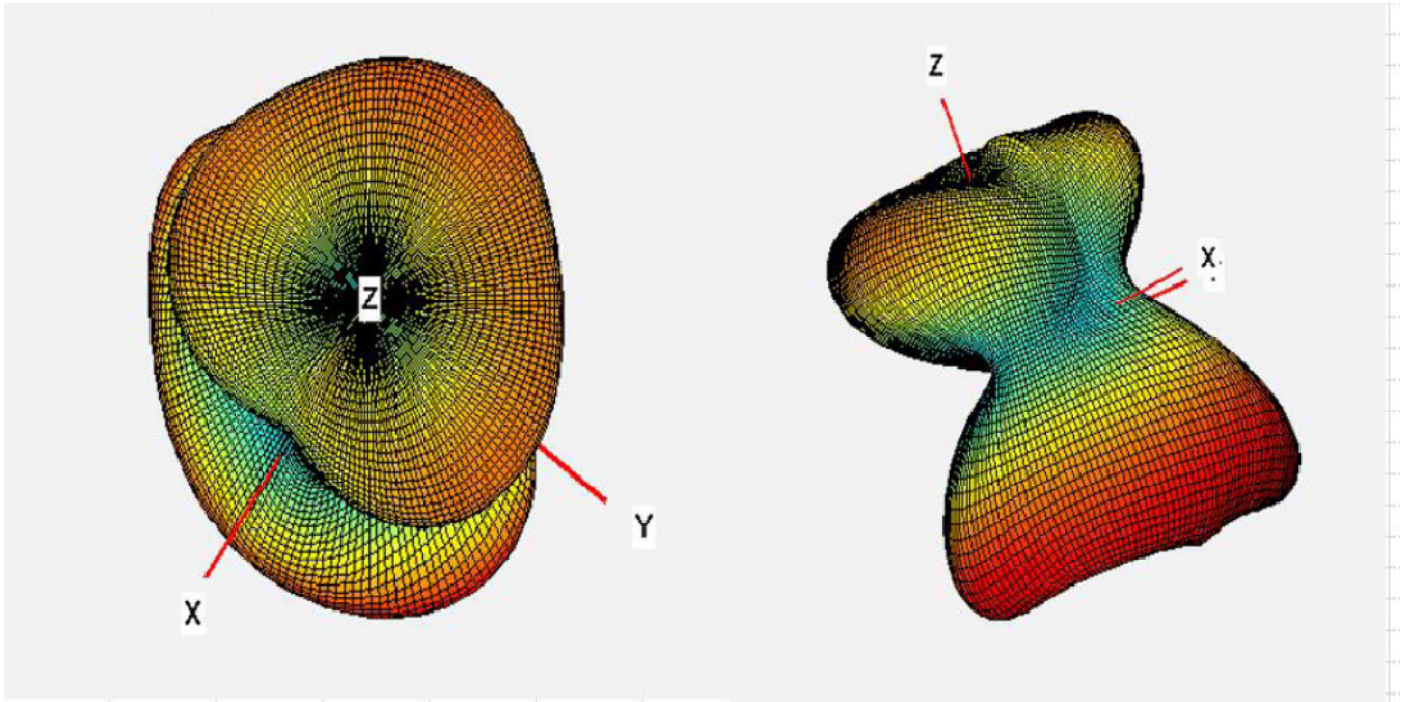
5G WIFI



5250



5500



5800

Antenna Photo
GSM&WCDMA<E Antenna



DIV Antenna



BT&WIFI Antenna



GPS Antenna

