

# Instruction manual

## Model:BGLV1



### I . Install APP.

Download APP then install it in the Apple Phone or Android phone.

Download address of Apple Phone please scan the QR Code



Download address of Android phone, please scan the QR Cod



## II . Install the battery

1. Open the lid, you can see the battery tank.

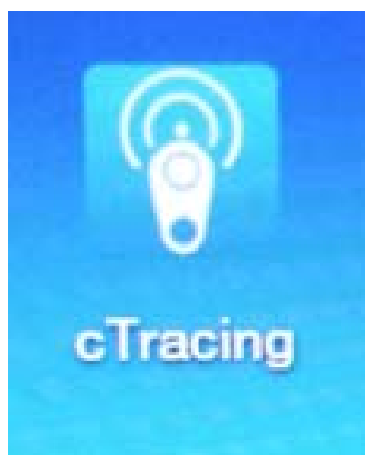




2. Put the battery into the battery slot and the positive electrode is above. After the installation is completed successful, the button is pressed, the alarm is lit and the indicator light flashes.

3. Connect the Bluetooth tracker with the phone.

Open the APP, search the Bluetooth tracker.



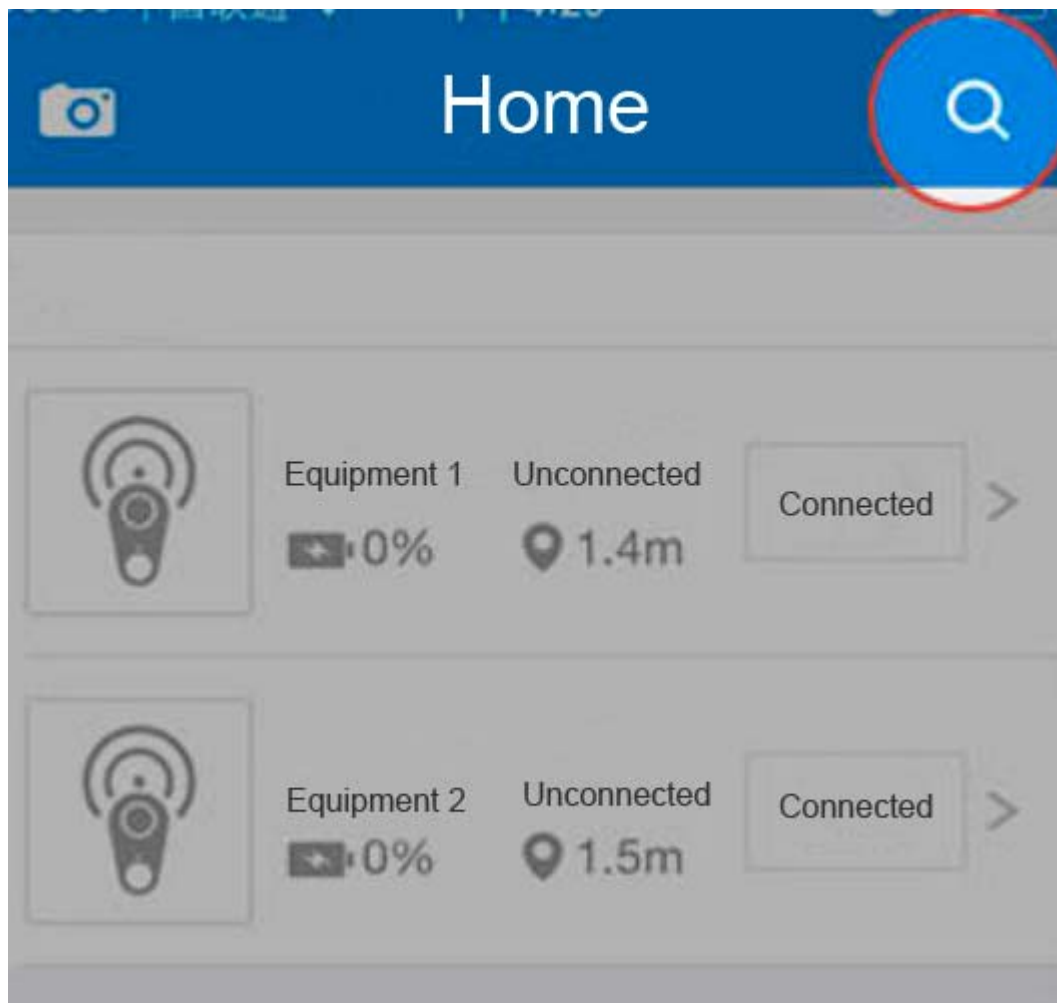
4. When the Bluetooth tracker lost connection with phone.

Bluetooth tracker will be in standby mode, when the smart devices into the scope of the connection, the blue tooth tracker will automatically re connect to your smart devices. But when the Bluetooth tracker lost connection more than 48 hours, will automatically enter the sleep mode Then you need to press the reset button to activate the Bluetooth tracker in order to re

connect.

### III. Press the magnifying

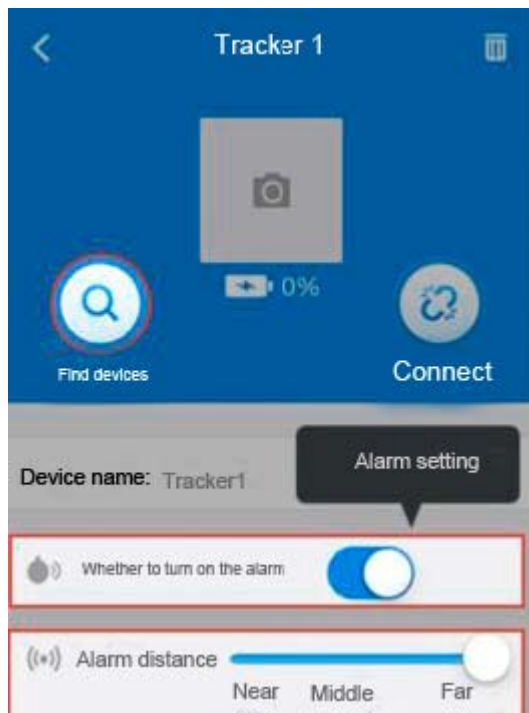
Glass" button to synchronize your Bluetooth tracker.



### IV. Forth, set the alarm of the Bluetooth tracker.

Set the alarm distance, once more than the alarm distance Bluetooth tracker or smart device will

automatic alarm.



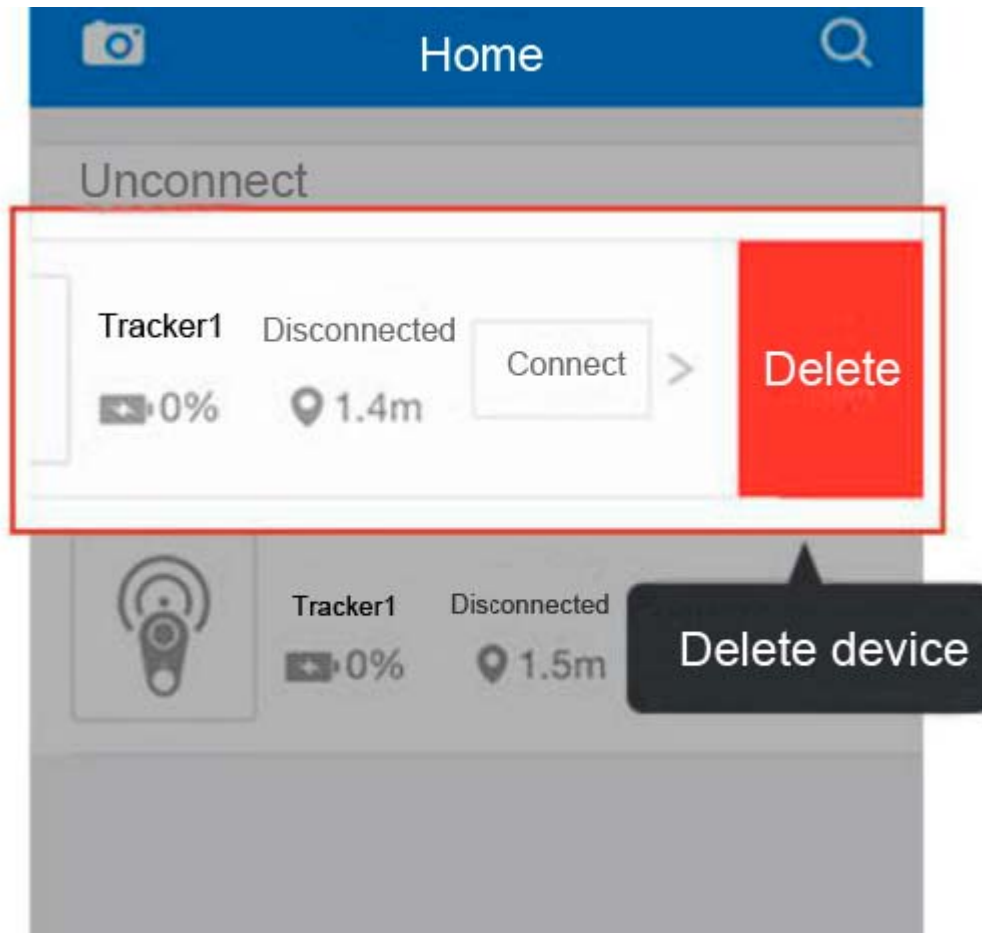
## V. Radar

In the radar interface displays all connections on the anti-lost device when lost connection Bluetooth tracker will automatically reconnect.



## VI The main interface.

Slide to the left, remove the device

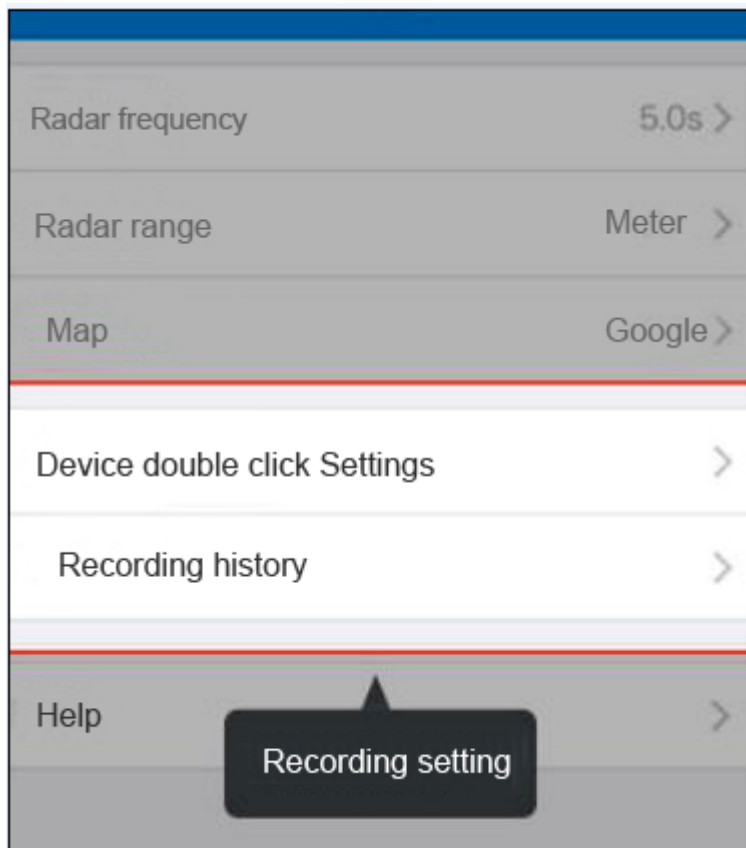


## VII Video recording.

Click twice settings: the device is set to record, double-click the device to start recording, and double - click to complicated the recording.

Recording history: to view the history of the recording file.





Guide for the use of Bluetooth tracker.

**1. Why can not connect the Bluetooth tracker with our smart devices?**

- A, Please confirm the Bluetooth tracker installed in the battery
- B, Please drop the Bluetooth tracker near your smart devices
- C, Please press the "reset" button on the back.
- D, Restart your smart device or restart APP and try again

**2. When the Bluetooth tracker lost connection why could not be re attached?**

- A, In order to reduce the power consumption of the battery, disconnect the connection for more than 48 hours the Bluetooth tracker will automatically enter the sleep state
- B, Please press the "reset" button once again to activate the Bluetooth tracker, re - even takes about 10-30 seconds
- C, If your smart devices are still unable to connect successfully, please restart the smart devices and try again
- D, Press and hold the "reset" button for 3 seconds, the device will enter a dormant state: 3

seconds, then the Bluetooth tracker will automatically restore the factory settings

### **3, Why is the radar interface display the distance and the actual distance is different?**

Due to the differences in the actual use of the environment, the radar function can only be used to estimate the actual distance of the Bluetooth tracker. We strongly advise not to place the Bluetooth tracker in the area where the signal is likely to be decreased like a thick coat.

### **4, what is the Application of reset button?**

A, When the Bluetooth tracker and smart devices connected, press the reset button to help you find your smart devices

B, Even in silent mode, your smart device will light up the screen and issue a warning (individual devices do not support this feature)

C. When the Bluetooth tracker connection. Press the reset button for 3 seconds, Bluetooth tracker a momentary clang bass that enter a dormant state.

D, When Bluetooth tracker in a dormant, press reset button, anti lost a brief uproar sound treble indicate Bluetooth tracker enters the active state

E, When the Bluetooth tracker in the sleep, hold the reset button for 3 seconds, the Bluetooth tracker sends a continuous high note that the Bluetooth tracker means restore the factory settings.

### **5, When I found that the Bluetooth tracker lost, what should I do?**

A, Please open the APP home page to find, or enter the historical record to see the location of the lost.

B, You can seek help from other users.

### **6, I have tried various methods, the Bluetooth tracker can not normal work?**

Please contact the manufacturer for help!

NOTE: This equipment has been tested and found to comply with the limits for a Class B digital device, pursuant to part 15 of the FCC Rules. These limits are designed to provide reasonable protection against harmful interference in a residential installation. This equipment generates, uses and can radiate radio frequency energy and, if not installed and used in accordance with the instructions, may cause harmful interference to radio communications. However, there is no guarantee that interference will not occur in a particular installation. If this equipment does cause harmful interference to radio or television reception, which can be determined by turning the equipment off and on, the user is encouraged to try to correct the interference by one or more of the following measures:

- Reorient or relocate the receiving antenna.
- Increase the separation between the equipment and receiver.
- Connect the equipment into an outlet on a circuit different from that to which the receiver is connected.
- Consult the dealer or an experienced radio/TV technician for help.

This device complies with part 15 of the FCC rules. Operation is subject to the following two conditions:

- (1) this device may not cause harmful interference, and
- (2) this device must accept any interference received, including interference that may cause undesired operation.

Changes or modifications to this unit not expressly approved by the party responsible for compliance could void the user's authority to operate the equipment.