

Antenna specification

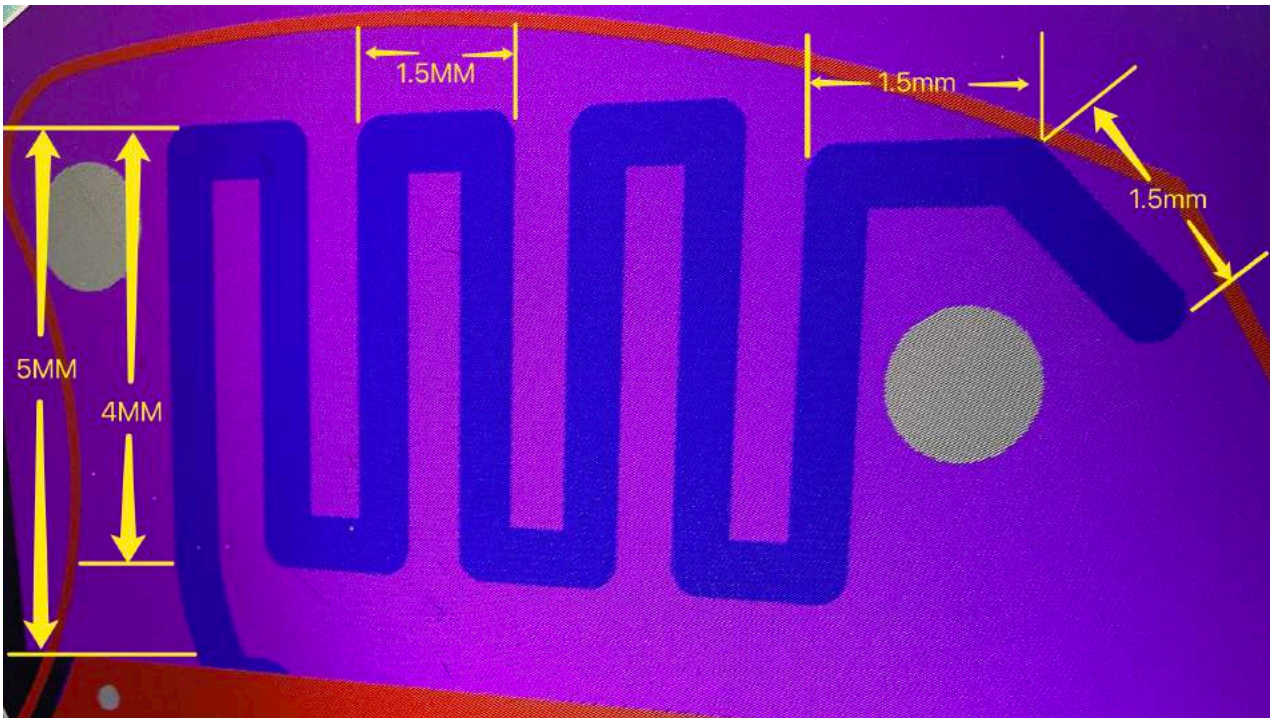
1、 Antenna introduction

The Bluetooth module antenna is directly used on the PCB, and model name is Power Tag.

Manufacturer: Shenzhe Xinzi Union Technology Co., Ltd

Address: Part 2, 401, Building D2, Hengli Industrial Park, No.168, Xiakeng 1st Road, Tongde Community, Baolong Sub-District, Longgang District, Shenzhen City

2、 Antenna shape



3、 Antenna parameter

The Bluetooth antenna operates at 2402-2480 MHz and generates resonance in this band. The table below shows the main parameters of the antenna.

Frequency (MHz)	2402 ~ 2480 MHz
VSWR	≤ 1.95
Impedance	50 Ohm Nominal

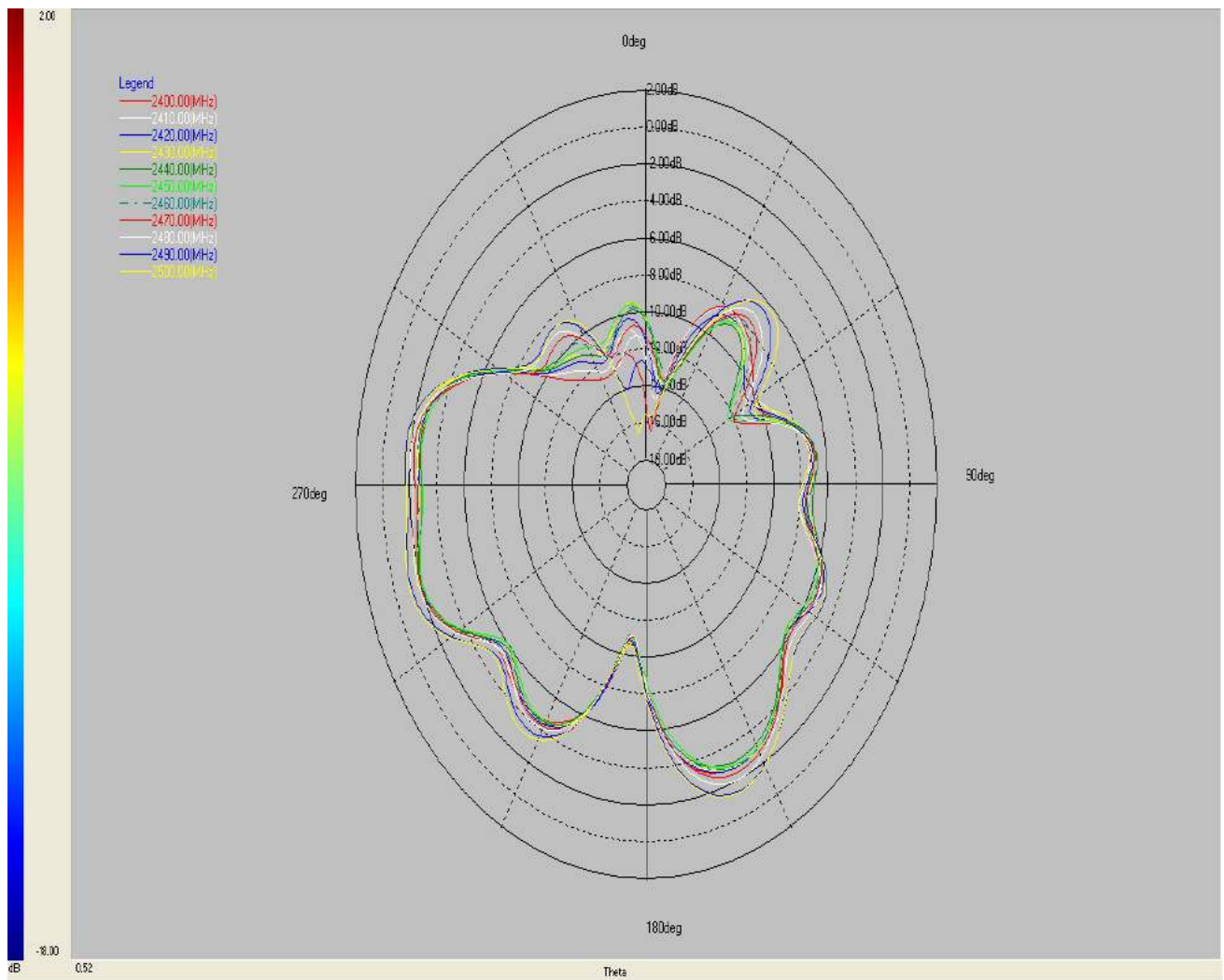
Return Loss	-15 dB Max
Radiation	Omni-directional
Gain (Peak)	1.08 dBi
Polarization	Linear, Vertical
Admitted Power	1MW
Connector	Tin

4、 Antenna gain report

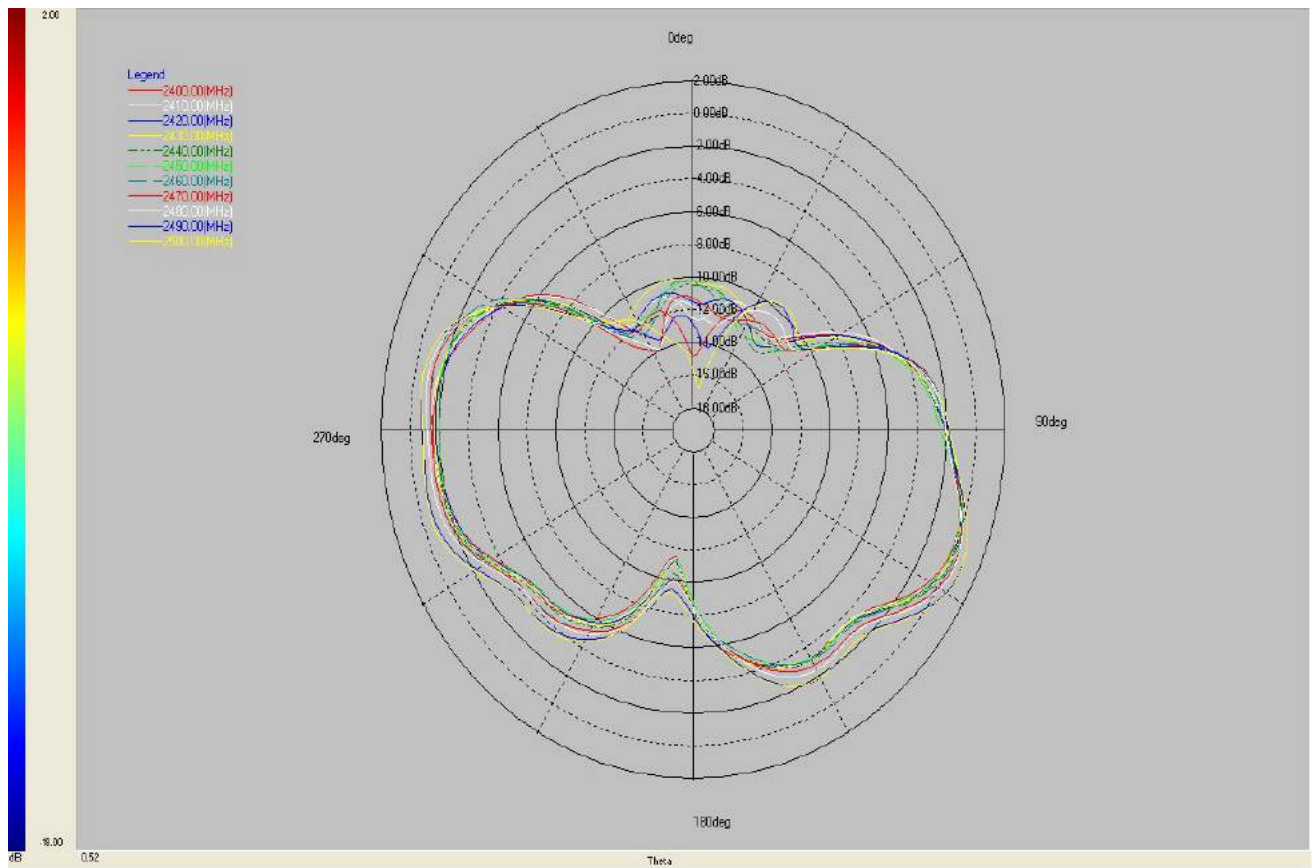
Spectrum Detector: PK Test Date : OCT. 19, 2023
 Test By: TOM Temperature : 25°C
 Test Result: PASS Humidity : 52 %
 Modulation: GFSK

Frequency VNA (MHz)	E Total. dB(dB)
2400MHz	0.0403503
2410MHz	0.0886264
2420MHz	0.267381
2430MHz	0.193012
2440MHz	0.26366
2450MHz	0.0723139
2460MHz	0.36895
2470MHz	0.551525
2480MHz	0.640702
2490MHz	1.05232
2500MHz	1.08443

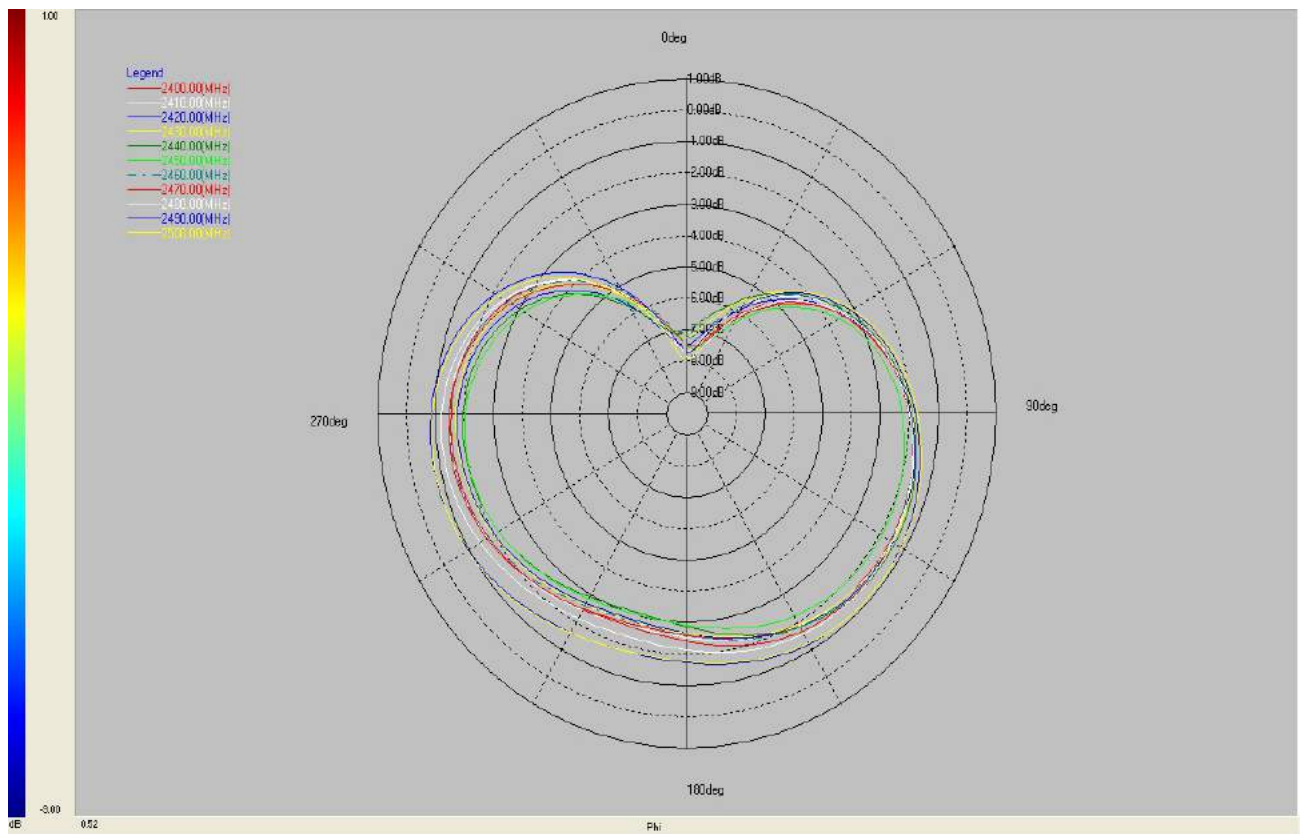
Direction map:



PHI 0°



PHI 90°



THETA 90°