

# User Manual Wireless Adapter BTTC-318



Scan me for warranty registration

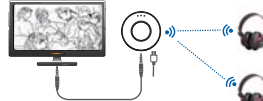
[www.avantree.com](http://www.avantree.com)

## Catalogue

1. Features & AptX Low Latency	1
2. What's in the box?	4
3. Product Overview	5
4. Power ON / Power OFF	6
5. Pair and connect to 1st Bluetooth headphones/receiver	7
6. Pair and connect to 2nd Bluetooth headphones/receiver	8
7. Reconnection	9
8. Connect Priva III to an audio source	10
9. Use for PC / Laptop	11
10. Locating Priva III	13
11. Restore Factory Default Settings	14
12. LED indications	15
13. Product Specifications	16

## 1. Features & AptX Low Latency

Avantree Priva III is a Bluetooth audio transmitter incorporating the latest "aptX Low Latency" technology, for CD-like quality sound with virtually no delay. With multipoint receiver support, Priva III allows you to share the fun and enjoyment of audio with others.



Note: Priva III supports true stereo headsets rather than mono AZDP headsets.

## aptX® Low Latency

To take advantage of the better performance of the APTX Low Latency Codec, the receiver must support the same codec. If the receiver only supports the normal AptX codec, or the SBC one, those codecs will be used instead.

Headphones/receiver support -	The audio delay will be
aptX Low Latency codec	~ 40ms
aptX codec	~ 70ms
Fast Stream codec	~ 40ms
SBC codec (most standard Bluetooth audio)	~ 220ms

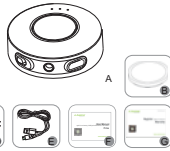
Note: Audio delay for Fast stream codec is almost the same as aptX Low Latency codec, but the audio quality of the latter is much higher.

## Dual link codec

Under Dual Link Mode (connecting with 2 headphones / receivers simultaneously), the transmission codec will be the one with longer latency, eg. If one device supports aptX LL and the other only supports aptX, then the final transmission codec will be aptX. If both headphones supports aptX LL, the final transmission codec will be aptX LL.

## 2. What's in the box:

- A. Avantree Priva III
- B. Magnetic base
- C. 3.5 mm audio cable
- D. RCA audio cable
- E. Micro USB charging cable
- F. User manual
- G. Quick start guide



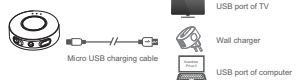
## 3. Product Overview

FUNCTION	
LED indicator	Set Priva III to pairing mode - Hold for 1 seconds until it flashes BLUE and RED alternately
Multi-Function Button(MFB)	Reset Priva III - In pairing mode, Hold for 5 seconds until it BLUE LED is on for 2s
ON / OFF	Power on / off Priva III
3.5MM AUDIO JACK	Analog Audio input
MICRO USB SOCKET	Connect to USB charger for power Micro USB Audio input

## 4. Power ON / Power OFF

**Power ON:**  
**Step 1:** Power Priva III (no battery attached) via the supplied micro USB cable to your own USB chargers (wall charger / travel charger, etc.) with 5V/500mA-2A, or PC/TV USB port.  
**Step 2:** Slide the button to "ON".

**Power OFF:**  
Slide the button to "OFF" or unplug the charging cable.



- 3 -

- 4 -

- 5 -

- 6 -

## 5. Pair and connect to 1<sup>st</sup> Bluetooth headphones/receiver

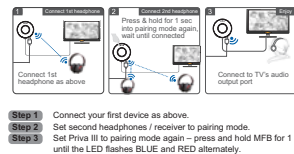
The first time you turn on Priva III, it will automatically go into pairing mode - the LED flashes BLUE and RED alternately.  
**Step 1:** Set your headphones / receiver to pairing mode.  
**Step 2:** Keep the devices close and wait until the LEDs on both devices slow down. Now Priva III is ready for use.



- 7 -

## 6. Pair and connect to 2<sup>nd</sup> Bluetooth headphones/receiver

**Step 1:** Connect your first device as above.  
**Step 2:** Set second headphones / receiver to pairing mode.  
**Step 3:** Set Priva III to pairing mode again - press and hold MFB for 1 second until the LED flashes BLUE and RED alternately.  
**Step 4:** Keep the devices close and wait until the LEDs on both devices slow down.



- 8 -

- 9 -

## 7. Reconnection

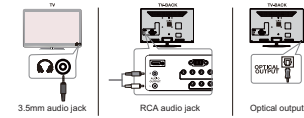
There is no need to pair Priva III each use. It will auto reconnect to the last paired headphones / receiver once you power on both devices and wait for 5-10s.

For other paired headphones / receivers, they may auto reconnect to Priva III after waiting 5-10s once powered on. Otherwise, please put both devices into pairing mode.

**How to get Priva III into pairing mode manually:**  
Under standby mode (except dual link mode), press and hold MFB for 1 second until the LED flashes BLUE and RED alternately.

## 8. Connect Priva III to an audio source

Priva III supports ANALOG audio output (3.5mm / RCA audio jack or via Digital to Analog Audio Converter). Please connect Priva III to correct audio output on your TV or any other device.

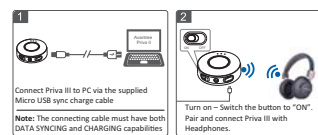


**How to verify the correct audio output:** Simply plug in wired earphones to test the sound. If you can work with the socket, you can connect Priva III to it.

- 10 -

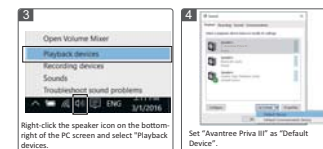
## 9. Use for PC / Laptop

Priva III also supports Micro USB audio input, and the sound quality is much greater than the ANALOG audio input. You can use it in this way on PC / Laptop (but most TVs will not support this)



For more detailed information, please refer to included Quick User Guide.

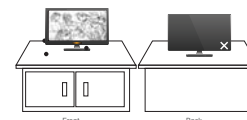
- 11 -



- 12 -

## 10. Locating Priva III

To achieve greater operational range, please don't hang Priva III behind TV.

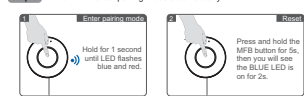


- 13 -

## 11. Restore Factory Default Settings

You may need to reset Priva III if it is not working as expected, such as not pairing, wrong LED indication, audio issues, etc. When Priva III is reset to factory default settings, all the paired device information will be erased.

**Step 1:** Get Priva III into pairing mode - press and hold MFB for 1 second until the LED flashes BLUE and RED alternately.  
**Step 2:** Press and hold the MFB button for 5s, then you will see the BLUE LED is on for 2s.  
**Step 3:** Then it will enter pairing mode automatically



- 14 -

## 12. LED indications

Status	LED indicator
Power on	Blue LED on for 1 second
Pairing mode	LEDs blink blue and red alternately
Connected with SBC codec	Blue LED flashes once every 5 seconds
Connected with Faststream codec	Blue LED flashes twice every 5 seconds
Connected with aptX codec	White LED flashes once every 5 seconds
Connected with aptX-LL codec	White LED flashes twice every 5 seconds
Reconnect	Blue LED flashes once every 2 seconds
Restored factory default settings	Blue LED on for 2 seconds

- 15 -

## 13. Product Specifications

- Bluetooth version: 4.2
- Bluetooth profile: A2DP
- Audio codec: SBC, Fast Stream, AptX, AptX-LL
- Operating Range: Up to 30 meters
- Weight: Body approx. 16 g; Base approx. 7 g
- Size: 48 mm(L) x 48 mm(W) x 15 mm(H)

## Declaration of Conformity

This device complies with the essential requirements and other relevant provisions of Directive 2014/53/EU.

This device complies with Part 15 of the FCC rules. Operation is subject to the following two conditions: 1) This device may not cause harmful interference, and 2) this device must accept any interference received, including interference that may cause undesired operation. Changes or modifications not expressly approved by the party responsible for compliance could void the user's authority to operate the equipment.

- 16 -

**NOTE:** This equipment has been tested and found to comply with the limits for a Class B digital device, pursuant to Part 15 of the FCC Rules. These limits are designed to provide reasonable protection against harmful interference in a residential installation. This equipment generates, uses and can radiate radio frequency energy and, if not installed and used in accordance with the instructions, may cause harmful interference to radio communications. However, there is no guarantee that interference will not occur in a particular installation. If this equipment does cause harmful interference to radio or television reception, which can be determined by turning the equipment off and on, the user is encouraged to try to correct the interference by one or more of the following measures:  
- Reorient or relocate the receiving antenna.  
- Increase the separation between the equipment and receiver.  
- Connect the equipment into an outlet on a circuit different from that to which the receiver is connected.  
- Consult the dealer or an experienced radio/TV technician for help.

FCC ID: 2A1TF-BTTC-318  
To maintain compliance with FCC's RF Exposure guidelines, this equipment should be installed and operated with minimum distance between 20cm the radiator your body. Use only the supplied antenna.

Dispose of the packaging and the product in accordance with the latest provisions.



FCC ID: 2A1TF-BTTC-318

- 17 -