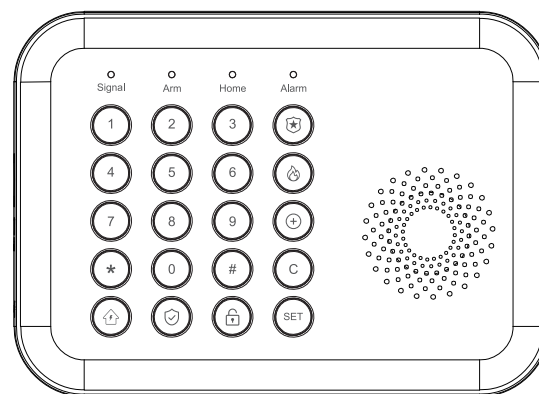


Alarm Host

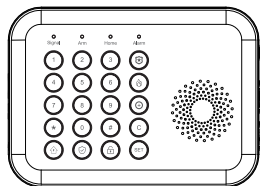
User Manual



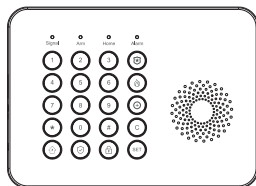
I. Overview

This system uses wireless communication technology to enable the sensor to transmit signals through the RF433.92 MHz wireless two-way communication protocol, and then transmit the alarm information to the mobile phone APP through 2.4G WIFI, achieving remote management of alarm equipment. This system is widely used in homes, shops, schools, banks, factories and other fields.

1.1 Product Pictures

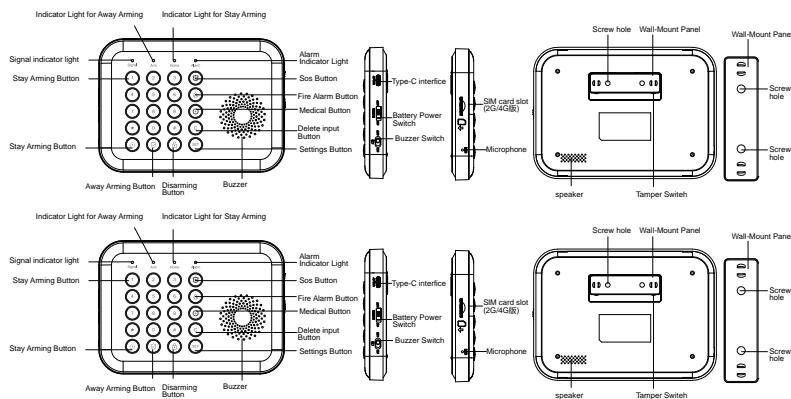


Alarm Host

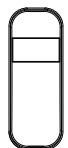


Alarm Host

1.2 Appearance & components of alarm host



Accessories list: (subject to actual packaging)



Infrared sensor x1



Door magnetic sensor x1



Remote control x2

II. Install the Smart Life APP

2.1 Download APP - Smart Life



"Smart Life "

1. For IOS and Android users outside of Mainland China, please scan the Smart Life APP QR code to download it.
2. After downloading the APP, please enable all usage permissions of the APP in the phone settings.
3. Register and log in to your APP account.

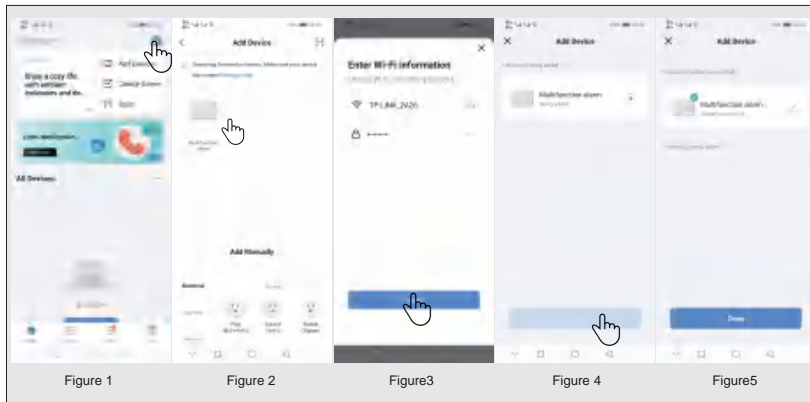
2.2 Connect the Alarm Host to the Smart Life APP

Note:

- (1) The alarm host supports 2.4 GHz Wi-Fi network. Make sure your router is set up correctly and connected to the Internet.
- (2) When adding the alarm host to the Smart Life APP, please turn on the Wi-Fi and Bluetooth of your mobile phone and confirm that your mobile phone is connected to the 2.4 GHz band.

Usage steps

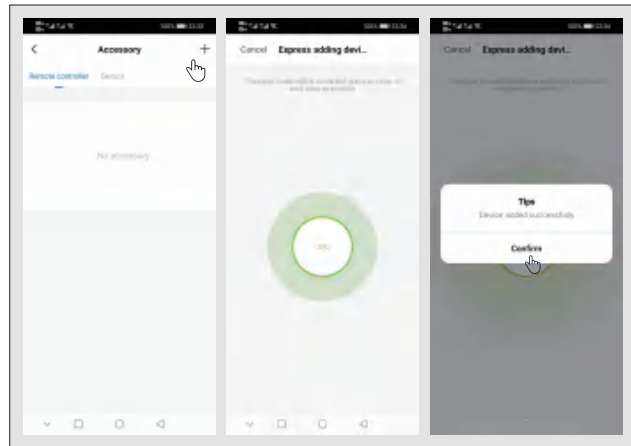
- (1) When using for the first time, please connect the alarm host to the power supply and turn the battery power switch on the side of the host to the ON position. After the host starts normally, press the Disarm button on the host and enter the setting command: [SET] → [6666] → [#] to enter the setting mode. The host will make a beep sound and the signal indicator will be on. Then enter the command: [00] → [#]. The signal indicator will flash continuously and quickly, and it indicates that the host has entered the Wi-Fi network configuration mode. Operation method: [SET] → [6666] → [#] → [00] → [#].
- (2) On the APP: Open the Smart Life APP and enter the Home interface.
 - 1) Click + in the upper right corner of the interface and select Add a Device.
 - 2) Press Add in the Discovered Devices area.
 - 3) Enter your Wi-Fi password and click Next.
 - 4) Successfully added.
 - 5) You can remotely control the alarm system on the APP.



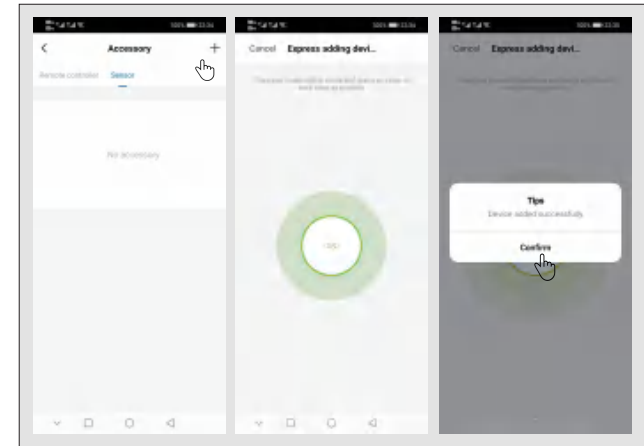
2.3 APP Settings

2.3.1Add a Device

Click Accessories, click Remote Control, press +, and then trigger the remote control (any button) to complete the pairing.

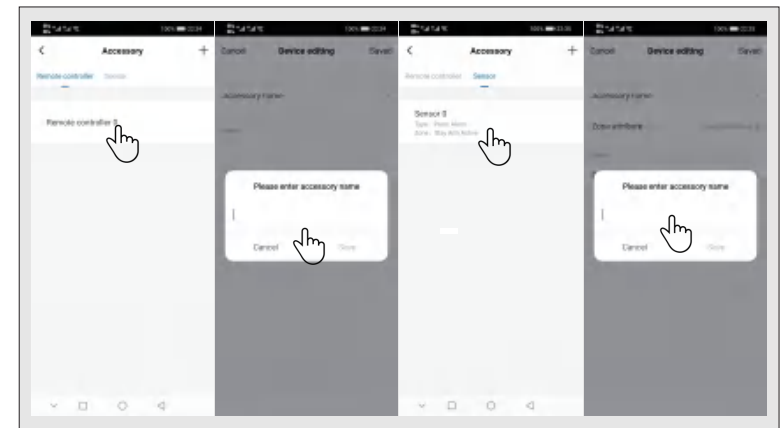


Cliquez sur « Accessoires », puis sur « Capteur », appuyez sur « + » et déclenchez l'accessoire pour terminer l'appairage.



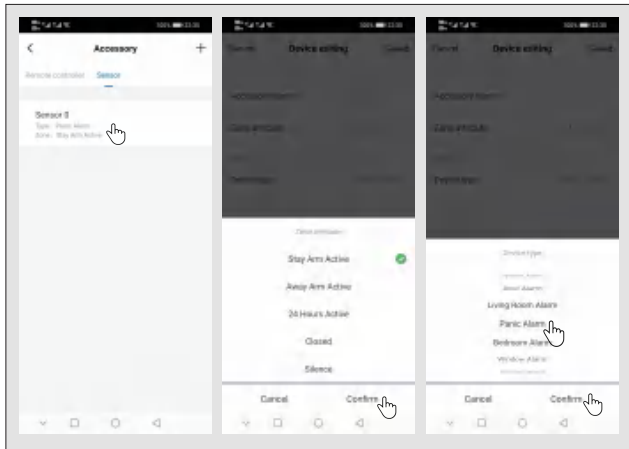
2.3.2 Rename a Device

The accessory name can only be renamed on the APP, press Accessory Name to edit the name.



2.3.3.Modify Attributes and Device Types of the Sensor Defense Zone

Click Accessories → Sensor → Click a sensor in the list → Click Zone Attributes→ Select the zone type to be modified → Confirm → Click Device Type → Select the device type to be modified → Confirm.



2.3.4 Shared Devices

An alarm host can only be paired with one APP account, but it can be shared with multiple family members for joint management.

2.3.5 Other Settings

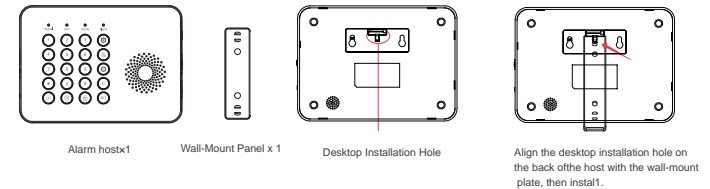
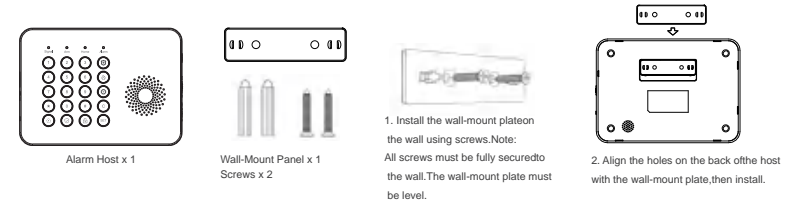
Press Settings to modify the settings in the security panel directly on the APP. The alarm system can be remotely controlled via the APP. You can also set the arming and disarming time, which is simple and convenient.

III.Set up the Safety Equipment

3.1 Alarm Host

3.1.1 Wall-mounted Installation Diagram

Click Accessories, click Remote Control, press +, and then trigger the remote control (any button) to complete the pairing.



Note:

- 1) Install it in the center of the house to facilitate signal reception and transmission.
- 2) It should be installed close to the Wi-Fi router.
- 3) Avoid installing all equipment on metal surfaces and load-bearing walls.

3.1.3 Alarm Mode

(1) Alarm host alarm mode

- 1) Arming while away: The alarm host is in the monitoring state. When the accessories are triggered, the alarm host will sound an alarm.
- 2) Arming at home: When the user is at home, certain areas can be monitored and alarmed in this mode.
- 3) Disarming: The alarm host cancels the monitoring state, and only the SOS button or accessories set to Effective for 24 hours will trigger the alarm.
- 4) SOS: When an emergency occurs, press and hold the SOS button for more than 1 second to trigger a distress alarm.
- 5) Fire alarm: When a fire occurs, press and hold the fire alarm button for more than 1 second to trigger a distress alarm.
- 6) Medical: When a medical rescue incident occurs, press and hold the SOS button for more than 1 second to trigger a distress alarm.

(2) Accessory mode

- 1) Effective arming at home: After the alarm host is deployed at home, the alarm host will sound an alarm when this type of sensor is triggered. This type of sensor is recommended for main doors, windows, balconies, and perimeter areas.
 - 2) Effective arming while away: After the alarm host is set to be arming while away, the alarm host will sound an alarm when this type of sensor is triggered. This type of sensor is recommended for interior areas such as halls and bedrooms.
 - 3) Effective for 24 hours: The sensor will sound an alarm at any time when it is triggered. It is recommended to use this type for emergency buttons, smoke sensors, gas sensors, carbon monoxide sensors, water leak sensors, etc.
 - 4) Off: Whenever the sensor is triggered, it will not sound an alarm.
 - 5) Doorbell: Whenever the sensor is triggered or the doorbell is pressed, the alarm host will sound a ding-dong sound.
 - 6) 24-hour silent: Whenever the sensor is triggered, it will sound an alarm, but the speaker will be silent.
 - 7) Effective arming at home (no delay): After the alarm host is in the state of arming while away or arming at home, this type of sensor will be triggered and the alarm will be sounded directly without delay. This type of sensor is recommended for main doors, windows, balconies, and perimeter areas.
 - 8) Effective arming while away (no delay): After the alarm host is set to be arming at home, this type of sensor is triggered and no alarm will be sounded.
- This type of sensor is recommended for interior areas such as halls and bedrooms, which can sound an alarm directly without delay.

Note:

You can choose which sensor to arm in Home and Away modes, or both, or maintain continuous arming for 24 hours. For example, if you want to avoid triggering the alarm while at home, you can set specific sensors to Arming while Away mode. In this way, the alarm will not be triggered when you set the host to Arming at Home, but only be triggered in Arming while Away mode.

3.2 Door Magnetic Sensor

3.2.1 Add a Door Magnetic Sensor

On the alarm host:

- (1) Turn the battery power switch on the side of the host to the ON position to turn on the host.
- (2) Press the Disarm button on the host and enter the setting command:
[SET] → [6666] → [#] to enter the setting mode.
- (3) Enter command [23], then enter the sensor number [1-240], press the [#] button to confirm, and then trigger the door magnetic sensor.
- (4) After the host receives the signal, there will be a beep sound. It indicates that the door magnetic sensor has been added successfully.

Operation method:

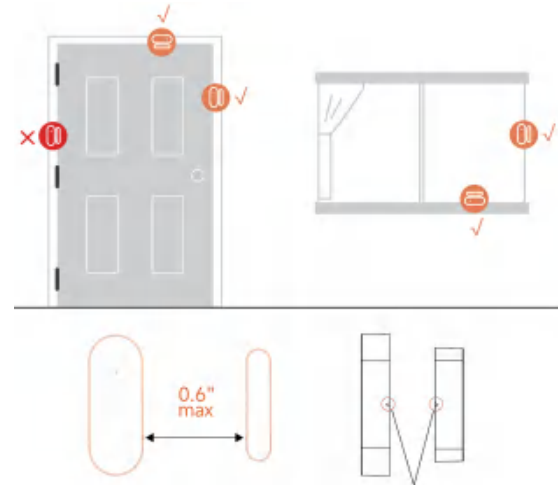
[SET] → [6666] → [#] → [23] → [XXX] → [#]

XXX: represents the sensor number from 1 to 240.

3.2.2 Installation

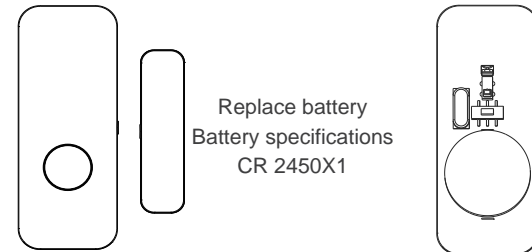
Door magnetic sensors should be installed on doors and windows (see the pictures).

- (1) First wipe the area on the door or window clean, and then apply the double-sided tape to the bottom.
- (2) The door magnetic transmitter (large) and magnet (small) should be installed separately. The triangle marks on the transmitter and magnet should be facing each other with the distance between them less than 0.6 inches.
- (3) When you open the door or window after the installation is complete, the indicator light will light up for 2 seconds. It indicates that the installation is complete.



Triangle markings are aligned with each other

3.2.3 Replace battery



Lift the installed door and window magnets Replace the battery with a new one

3.2.4 Delete the Door Magnetic Sensor

3.2.4.1 Delete a single door magnetic sensor

On the alarm host:

- (1) Turn the battery power switch on the side of the host to the ON position to turn on the host.
- (2) Press the Disarm button on the host and enter the setting command:
[SET] → [6666] → [#] to enter the setting mode.
- (3) Enter command [24], then enter the sensor number [1-256],
and press the [#] button to confirm.
- (4) After the host receives the signal, there will be a beep sound.
It indicates that the single door magnetic sensor has been deleted successfully.

Operation method:

[SET] → [6666] → [#] → [24] → [XXX] → [#].

XXX: represents the sensor number from 1 to 240.

3.2.4.2 Delete all door magnetic sensors

On the alarm host:

- (1) Turn the battery power switch on the side of the host to the ON position to turn on the host.
- (2) Press the Disarm button on the host and enter the setting command:
[SET] → [6666] → [#] to enter the setting mode.
- (3) Enter command [25] and press the [#] button to confirm.
- (4) After the host receives the signal, there will be a beep sound.
It indicates that all door magnetic sensors have been deleted successfully.

Operation method: [SET] → [6666] → [#] → [25] → [#].

3.3 Infrared Sensor

3.3.1 Add an Infrared Sensor

On the alarm host:

- (1) Turn the battery power switch on the side of the host to the ON position to turn on the host.
- (2) Press the Disarm button on the host and enter the setting command:
[SET] → [6666] → [#] to enter the setting mode.
- (3) Enter command [23], then enter the sensor number [1-240],
press the [#] button to confirm, and then trigger the infrared sensor.
(Wave your hand directly in front of the sensor until the light turns on.)
- (4) After the host receives the signal, there will be a beep sound.

It indicates that the infrared sensor has been added successfully.

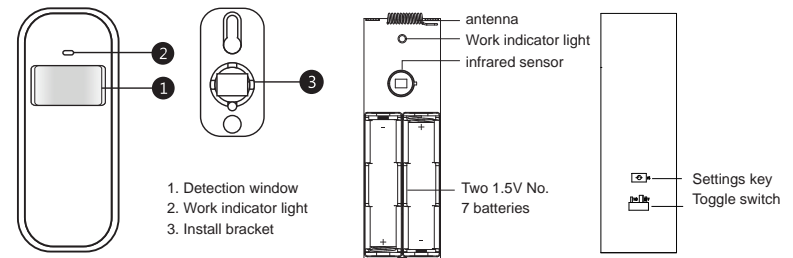
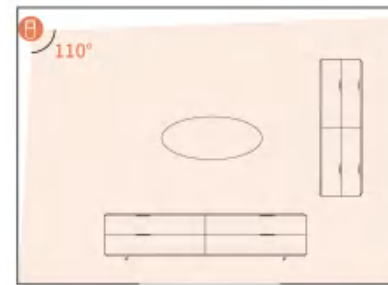
Operation method: [SET] → [6666] → [#] → [23] → [XXX] → [#].

XXX: represents the sensor number from 1 to 240.

Notice: The sensor number should not be set repeatedly,
otherwise the sensor cannot be added successfully.

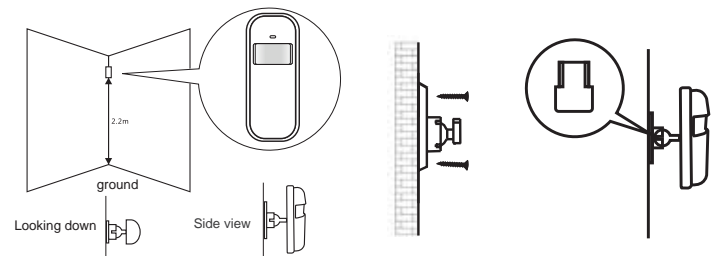
3.3.2 Installation

- (1) The recommended installation height is 79 inches to 87 inches (2.0 m to 2.2 m) above the ground.
- (2) Install it in a corner or on a flat wall without obstacles or blind spots.
- (3) It should not face cold or hot air vents or cold and heat sources.



Installation height

The sensor must be installed at a height of 79 to 87 inches
(2 to 2.2 meters) above the ground.



Fix the base to the wall with screws and hang the
infrared sensor on the pivot shaft

3.3.3 Delete the Infrared Sensor

3.3.3.1 Delete a single infrared sensor

On the alarm host:

(1) Turn the battery power switch on the side of the host to the ON position to turn on the host.

(2) Press the Disarm button on the host and enter the setting command:

[SET] → [6666] → [#] to enter the setting mode.

(3) Enter command [24], then enter the sensor number [1-256], and press the [#] button to confirm.

(4) After the host receives the signal, there will be a beep sound. It indicates that the single infrared sensor has been deleted successfully.

Operation method: [SET] → [6666] → [#] → [24] → [XXX] → [#].

XXX: represents the sensor number from 1 to 240.

3.3.3.2 Delete all door magnetic sensors

On the alarm host:

(1) Turn the battery power switch on the side of the host to the ON position to turn on the host.

(2) Press the Disarm button on the host and enter the setting command:

[SET] → [6666] → [#] to enter the setting mode.

(3) Enter command [25] and press the [#] button to confirm.

(4) After the host receives the signal, there will be a beep sound.

It indicates that all infrared sensors have been deleted successfully.

Operation method: [SET] → [6666] → [#] → [25] → [#].

3.4 Remote Control

3.4.1 Add a Remote Control

On the alarm host:

(1) Turn the battery power switch on the side of the host to the ON position to turn on the host.

(2) Press the Disarm button on the host and enter the setting command:

[SET] → [6666] → [#] to enter the setting mode.

(3) Enter command [21], then enter the remote control number [1-10], press the [#] button to confirm, and then trigger the remote control (any button).

(4) After the host receives the signal, there will be a beep sound.

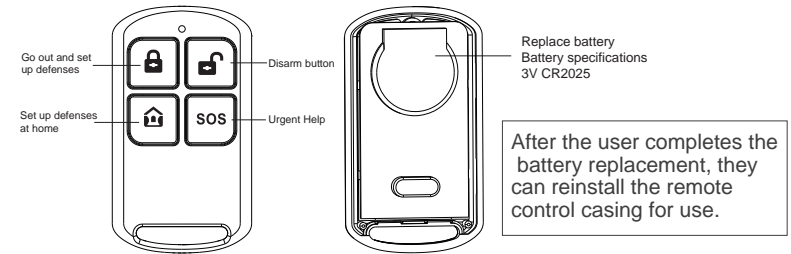
It indicates that the remote control has been added successfully.

Operation method: [SET] → [6666] → [#] → [21] → [XX] → [#].

XX: represents the remote control serial number from 1 to 10.

Notice: The remote control number should not be set repeatedly, otherwise the remote control cannot be added successfully.

3.4.2 Appearance Introduction



3.4.3 Delete All Remote Controls

On the alarm host:

(1) Turn the battery power switch on the side of the host to the ON position to turn on the host.

(2) Press the Disarm button on the host and enter the setting command:

[SET] → [6666] → [#] to enter the setting mode.

(3) Enter command [22] and press the [#] button to confirm.

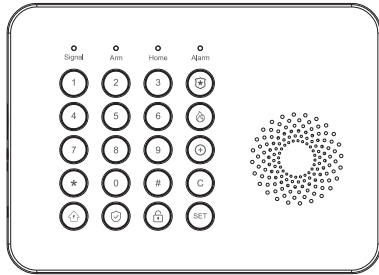
(4) After the host receives the signal, there will be a beep sound. It indicates that all remote controls have been deleted successfully.

Operation method:

[SET] → [6666] → [#] → [22] → [#]

IV. Learn to Use the Alarm Host

4.1 Host Panel Interface



4.1.1 State Description of the Working Indicator Light

Working Indicator Light	State Description
The signal indicator light flashes slowly.	No signal
The signal indicator light flashes once every 3 seconds.	Wi-Fi successfully connected
The signal indicator light flashes twice every 3 seconds.	2G/4G successfully connected
The signal indicator light flashes 3 times every 3 seconds.	Wi-Fi and 2G/4G successfully connected
The indicator light for arming while away flashes once per second.	Arming delay state
The indicator light for arming while away is always on.	Arming while Away
The indicator light for arming at home is always on.	Arming at Home
The alarm indicator light flashes once per second.	Alarm delay state
The alarm indicator light is always on.	Alarm state
The indicator lights for arming while away and arming at home are off.	Disarming state

4.1.2 Instructions

Arming at Home: Press the Arming at Home button on the host, and the alarm host will be in the state of arming at home. When the accessories set for arming at home are triggered, the alarm host will sound an alarm.

Arming while Away: Press the Arming while Away button on the host, and the alarm host will be in the state of arming while away. When the accessories set for arming while away are triggered, the alarm host will sound an alarm.

Disarm: Press the Disarm button on the host and the alarm host will be disarmed.

Medical: Press and hold the Medical button for more than 1 second, and the alarm indicator light (Alarm) will be on. The host will send out an on-site sound and light alarm signal, and at the same time, it will make an alarm call and send an alarm text message to the preset alarm number.

Fire Alarm: Press and hold the Fire Alarm button for more than 1 second, and the alarm indicator light (Alarm) will be on. The host will send out an on-site sound and light alarm signal, and at the same time, it will make an alarm call and send an alarm text message to the preset alarm number.

SOS: Press and hold the SOS button for more than 1 second, and the alarm indicator light (Alarm) will be on. The host will send out an on-site sound and light alarm signal, and at the same time, it will make an alarm call and send an alarm text message to the preset alarm number.

Dial: In the disarming state, enter [telephone number] and press [#] button to dial.

4.2 Feature Settings

When the host is in the disarming state, enter the setting command:

[SET] —> [6666] —> [#]. The signal light is always on, which indicates that you have entered the setting state. In the setting state, you can repeatedly perform various feature setting operations. If you stop pressing the host button for more than 30 seconds, the host will automatically exit the setting and return to the standby state. Notice: The factory value of the project password is [6666].

The following settings are all performed in the setting state. Enter the setting address and setting content in sequence, and press the # button to complete the setting.

Set the Content Directory	Set the Address	Set the Content	Remark
Enter the Wi-Fi network configuration mode	00	#	Enter 00+#, the host enters the Wi-Fi network configuration mode. 1. The network configuration lasts for 120 seconds. When the network is successfully connected, the buzzer makes a beep sound.
SMS text selection	11	1-11#	1. Chinese 2. English 3. Italian 4. Polish 5. Russian 6. Greek 7. French 8. German 9. Spanish 10. Portuguese 11. Hungarian
Remote control code pairing	21	1-10#	See 3.4.1 Add a Remote Control. Support setting of 10 devices.
Delete the remote control	22	#	See 3.4.3
Delete a single sensor	24	1-240#	See 3.2.1.1 and 3.3.3.1
Delete all sensors	25	#	See 3.2.1.2 and 3.3.3.2
Recording and playback	37	#	Enter the address and press the # button to automatically conduct recording and playback.
Modify the user password	38	0000-9999#	Factory default: 1234
Modify the project password	39	0000-9999#	Factory default: 6666
Host keyboard lock settings	40	0 or 1#	0: Off; 1: On. The factory value is [0].
Settings of arming and disarming time switch	41	0 or 1#	0: Off; 1: On. The factory value is [0].
Scheduled arming and disarming settings	42	AABB XYYY	AABB: Arming time, arming hours and minutes XYYY: Disarming time, disarming hours and minutes
Restore factory settings	43	#	No deletion of accessories
Clock settings	48	Year/Month/Day/ Hour/Minute	See Example 1
Host SMS number settings	49-50	Mobile/Landline number	See Example 2. Up to 2 groups can be set.
Host SMS number deletion	49-50	#	
Alarm phone number settings	51-56	Mobile/Landline number	See Example 3. Up to 6 groups can be set.
Emergency phone number deletion	51-56	#	

Example 1 Clock setting method

In the disarming state, enter the project command [6666#]-[48] button, and enter the last two digits of the current year [AA]; add the two digits of month [BB]; add the two digits of date [CC]; add the current hour time (24-hour system) [DD]; add the current time of minute [EE]; press the [#] button to confirm, and the host will make a beep sound, which indicates that the setting is successfully complete.

Operation method: [6666#]→[48]→[AA]→[BB]→[CC]→[DD]→[EE]→[#].

AA represents the last two digits of the current year.

BB represents the two digits of the current month.

CC represents the two digits of the current date.

DD represents the number of hours of the current time (24-hour system).

EE represents the number of minutes of the current time.

For example: 17:30 on August 26, 2024.

Operation method: [6666#]→[48]→[24]→[08]→[26]→[17]→[30]→[#].

Example 2 Host SMS number settings

In the disarming state, enter the project command [6666#]-[49-50] button, then enter the mobile phone number, and press the [#] button to confirm. The host will make a beep sound, which indicates that the setting is successfully complete.

Operation method: [6666#] → [XX] → [YY] → [#].

XX represents 1 to 2 groups of phone numbers [49~50];

YY represents the phone (mobile) number to be set.

For example: Set 13811110751 as the first group of SMS numbers.

Operation method: [6666#] → [49] → [13811110751] → [#].

Example 3 Alarm phone number settings

In the disarming state, enter the project command [6666#]-[49-50] button, then enter the mobile phone number, and press the [#] button to confirm. The host will make a beep sound, which indicates that the setting is successfully complete.

Operation method: [6666#] → [XX] → [YY] → [#].

XX represents 1 to 2 groups of phone numbers [49~50];

YY represents the phone (mobile) number to be set.

For example: Set 13811110751 as the first group of SMS numbers.

Operation method: [6666#] → [49] → [13811110751] → [#].

V.Phone Features

5.1 Manual Dialing

When the host is in the disarming state, enter the number in the numeric keypad area on the host panel and press the # button to dial.

In any of the following states, call operations will be prohibited: 2G/4G network abnormality, arming state, and call alarm.

5.2 Automatic Dialing

When an alarm occurs, the alarm host will automatically dial the preset emergency number (the dial switch must be turned on during setting). If the user does not answer or the dialing fails, it will keep dialing the preset number of times until the user answers.

5.3 Remote Call

When several groups of emergency numbers preset by the alarm host actively call the host, the alarm host will automatically connect, and two-way voice conversation will be available after the call is connected.


VI.User Daily Operations

Users can operate the host in either way.


- On-site keyboard operation
- On-site remote control operation
- Mobile APP remote operation

6.1 Arming while Away


Remote control operation: Press the Arming while Away button on the remote control. Keyboard operation: Click  on the main interface.


APP operation: Press the icon  in the main interface. After about 3 seconds, you will receive a notification pushed by the APP: Device mode: Arming while Away! Prompt message The APP state icon is updated to Arming.

Host prompt: The Arm indicator flashes, accompanied by a beep, beep, beep prompt sound. It indicates that the host is in the arming delay countdown state. The user needs to leave the site before the delay ends. After the arming delay countdown ends, the Arm indicator is always on. If the arming/disarming SMS prompt switch is turned on, a system armed SMS will be sent to the preset phone number.

 When in the arming while away state, all defense zones enter the alarm state. At this time, if an accessory triggers an alarm, the alarm host will sound an alarm, send an alarm text message and make a call to the preset alarm phone number, push the alarm information to the mobile phone APP, and send the alarm information to the alarm receiving center.

6.2 Arming at Home

Remote control operation: Press the Arming at Home button on the remote control. Keyboard operation: Click  on the main interface.

APP operation: Press the icon  in the main interface. After about 3 seconds, you will receive a push notification from the AP: Device mode: Arming at Home! Prompt message The APP state icon is updated to Arming at Home.

On the host, if the arming/disarming SMS prompt switch is turned on, the arming at home SMS will be sent to the preset phone number.




When in the state of arming at home, only the effective defense zones at home enter the alarm state. At this time, if any defense zone triggers an alarm, the alarm host will sound an alarm, send an alarm text message and make a call to the preset alarm phone number, push the alarm information to the mobile phone APP, and send the alarm information to the alarm receiving center.

6.3 Disarming

Remote control operation: Press the Disarm button on the remote control.

Keyboard operation: Click  on the interface.

APP operation: Press the icon  in the main interface. After about 3 seconds, you will receive a push notification from the APP: Device mode: Disarming! Prompt message The APP state icon is updated to Disarming.



After the zones are disarmed, all alarm processes will be forcibly terminated and the alarm host will return to normal. On the host, if the arming/disarming SMS prompt switch is turned on, a system disarmed SMS will be sent to the preset phone number.

6.4 SOS

Remote control operation: Press the [SOS] button on the remote control.

Keyboard operation: Press the SOS button on the host  for more than 1 second.

Press the fire alarm button  on the host for more than 1 second.

Press the medical button  on the host for more than 1 second.

APP operation: Press the emergency icon in the main interface, and the state icon in the middle of the APP interface will be updated to a distress alarm.

Host prompt: The host sends out a sound and light alarm locally, sends an alarm text message and makes a call to the preset alarm phone, and sends the alarm information to the alarm receiving center.

VII. Technical Parameters

Enter voltage: DC 5 V (USB Type-c standard interface power supply)

Working current: < 100 mA

Alarm current: < 300 mA

Wireless RF: The center frequency is 433.92 MHz; the modulation mode is ASK; the oscillation impedance is 330 K.

Coding format: receives and supports 1527/2262

GSM standard: 2G/4G

Wi-Fi standard: IEEE80211b/g/n wireless standard

Backup battery: 3.7 V / 1000 mAh

Working temperature: -10 C ~55 C

Relative humidity: < 80% (no condensation)

Product size: 160.5*115*21.25 MM (length × width × height)

FCC Caution: Any changes or modifications not expressly approved by the party responsible for compliance could void the user's authority to operate this equipment.

This device complies with Part 15 of the FCC Rules. Operation is subject to the following two conditions:

- (1) This device may not cause harmful interference, and
- (2) this device must accept any interference received, including interference that may cause undesired operation.

NOTE:

This equipment has been tested and found to comply with the limits for a Class B digital device, pursuant to Part 15 of the FCC Rules.

These limits are designed to provide reasonable protection against harmful interference in a residential installation. This equipment generates, uses and can radiate radio frequency energy and, if not installed and used in accordance with the instructions, may cause harmful interference to radio communications. However, there is no guarantee that interference will not occur in a particular installation.

If this equipment does cause harmful interference to radio or television reception, which can be determined by turning the equipment off and on, the user is encouraged to try to correct the interference by one or more of the following measures:

- Reorient or relocate the receiving antenna.
- Increase the separation between the equipment and receiver.
- Connect the equipment into an outlet on a circuit different from that to which the receiver is connected.
- Consult the dealer or an experienced radio/TV technician for help.

FCC Radiation Exposure Statement

This equipment should be installed and operated with minimum distance 20cm between the radiator and your body.