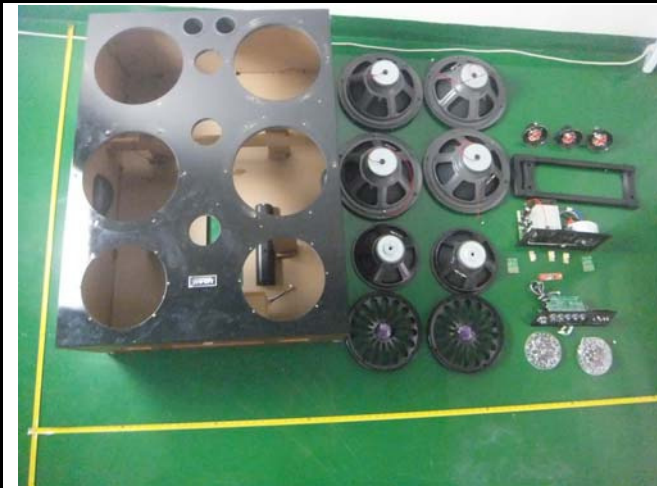
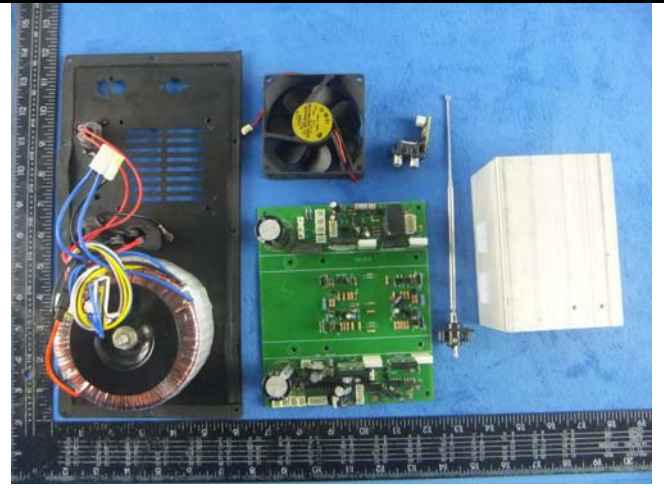


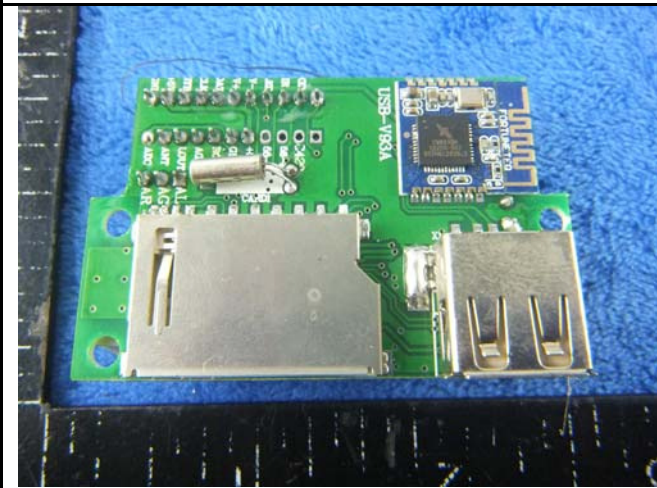
**Annex B.ii. Photograph: EUT Internal Photo**



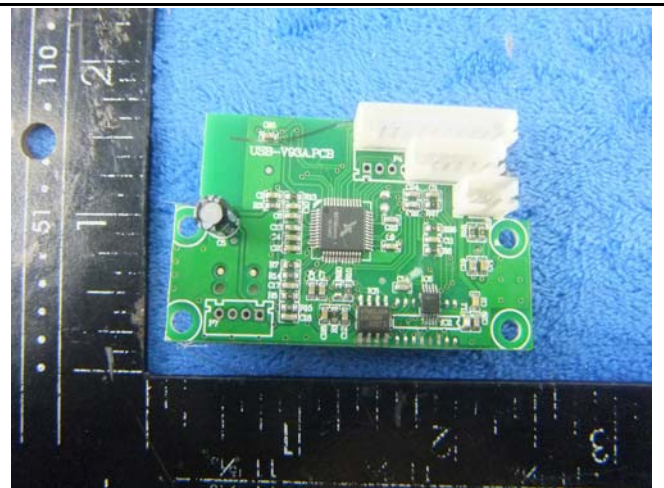
Cover Off - Top View 1



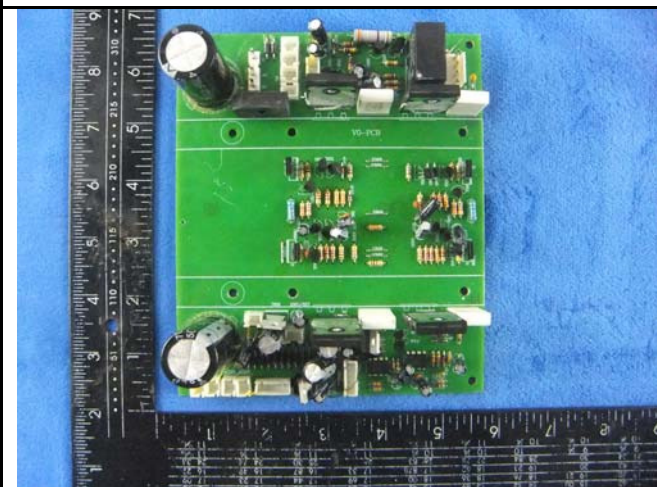
Cover Off - Top View 2



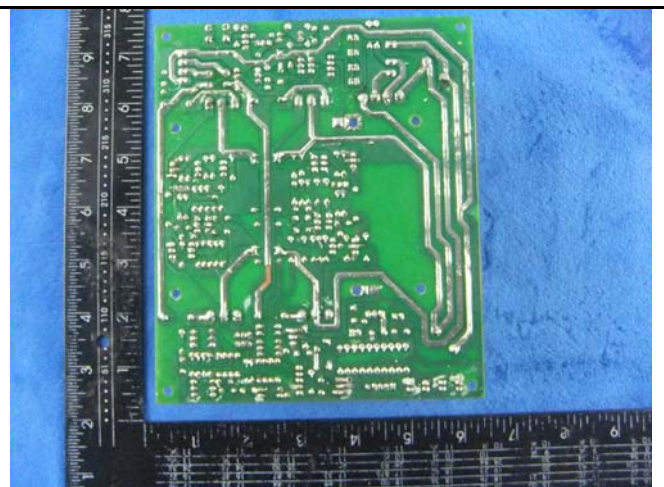
SD card board - Front View



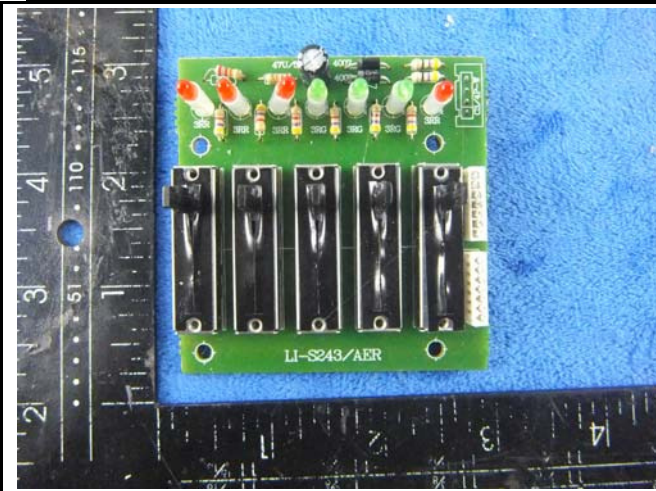
SD card board - Rear View



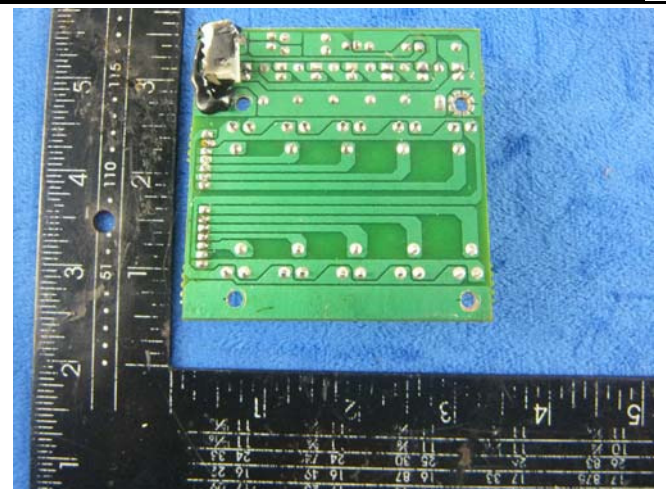
Power amplifier board - Front View



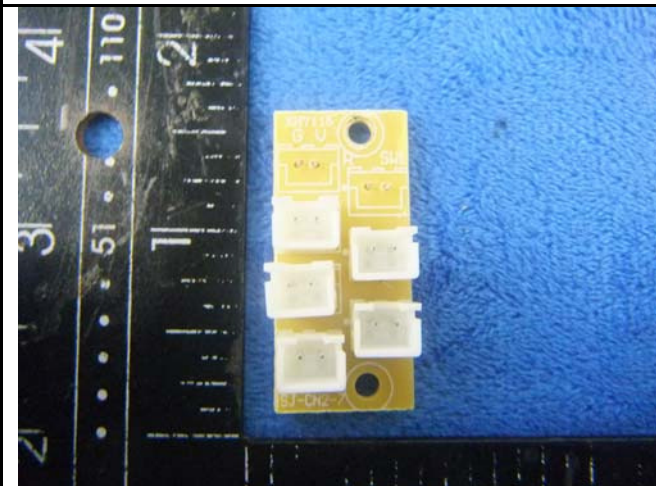
Power amplifier board - Rear View



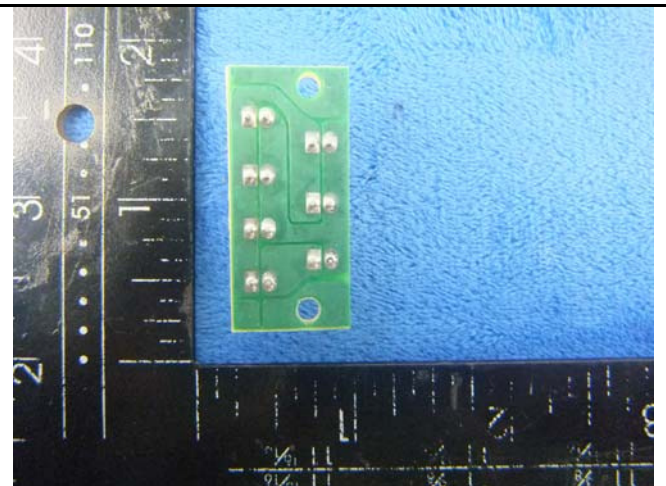
PCB board - Front View



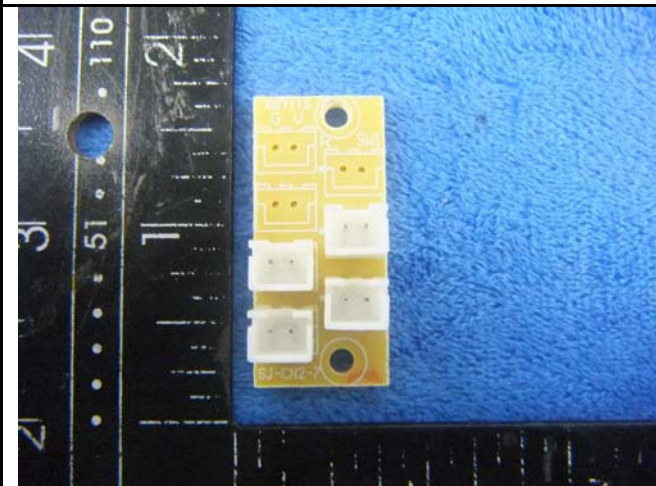
PCB board - Rear View



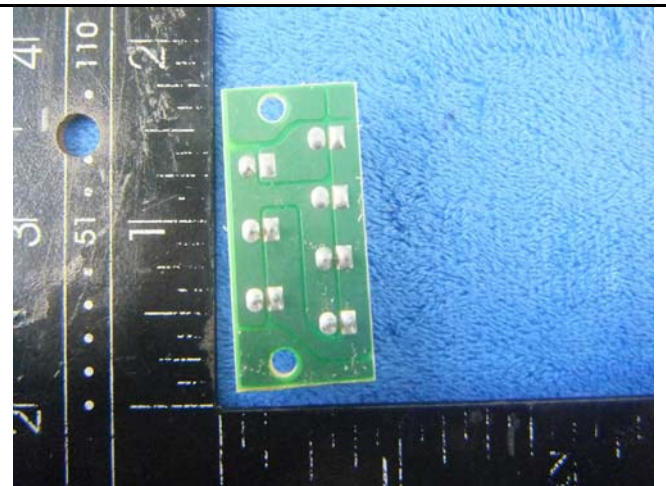
Connect board 1- Front View



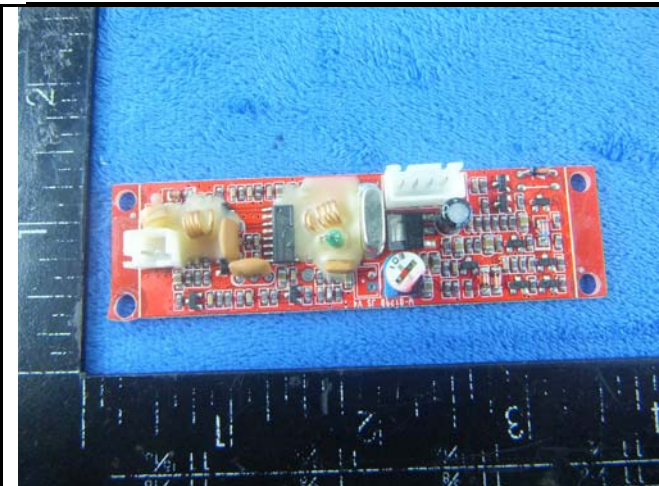
Connect board 1- Rear View



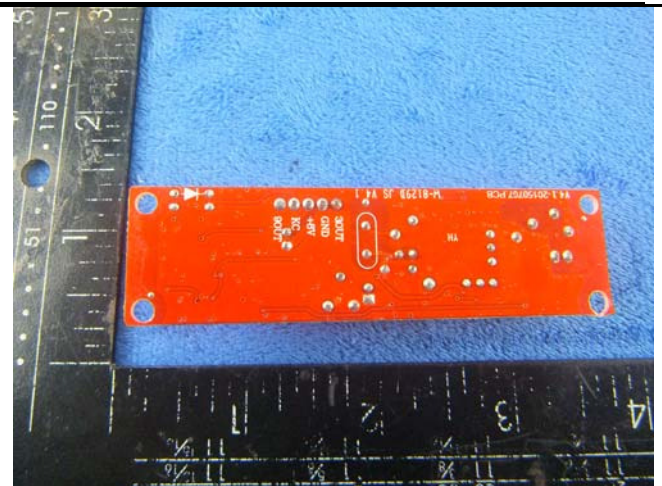
Connect board 2- Front View



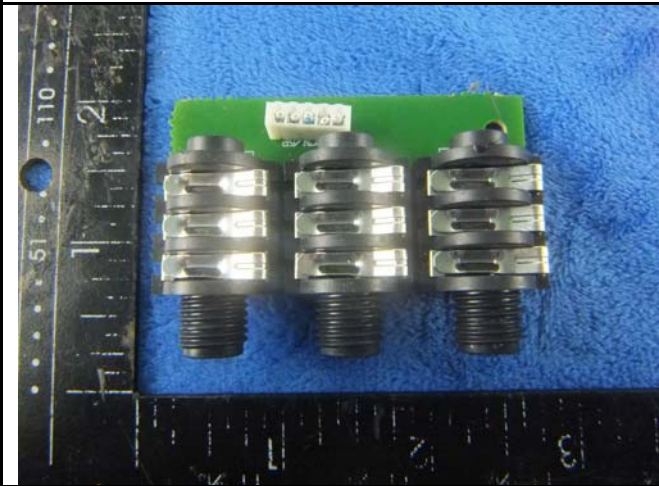
Connect board 2- Rear View



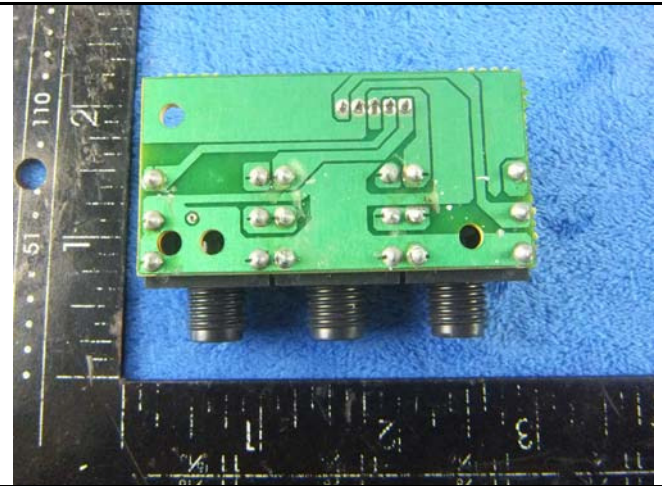
Receiver board - Front View



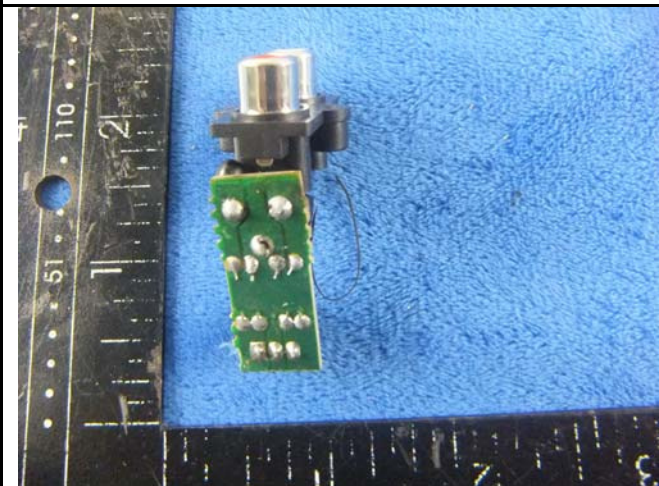
Receiver board - Rear View



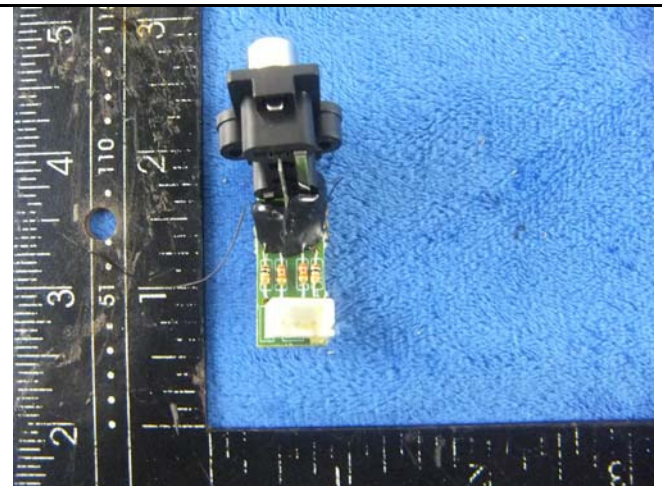
MIC&Guitar in board - Front View



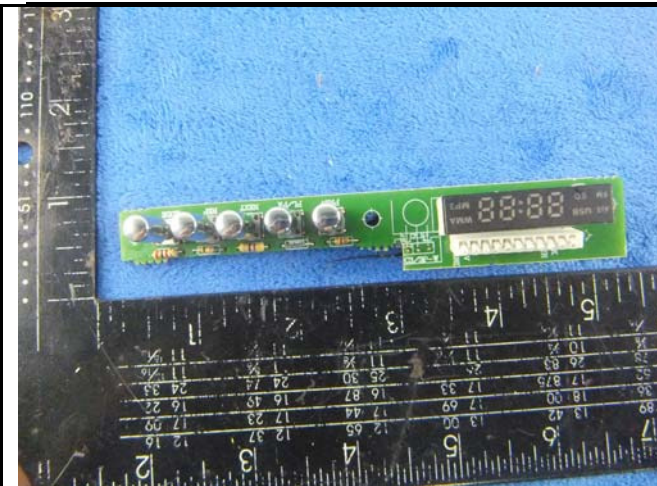
MIC&Guitar in board - Rear View



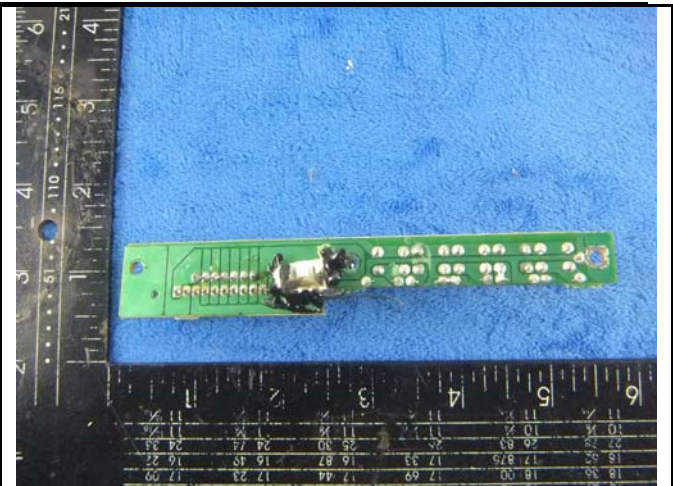
MIC board - Front View



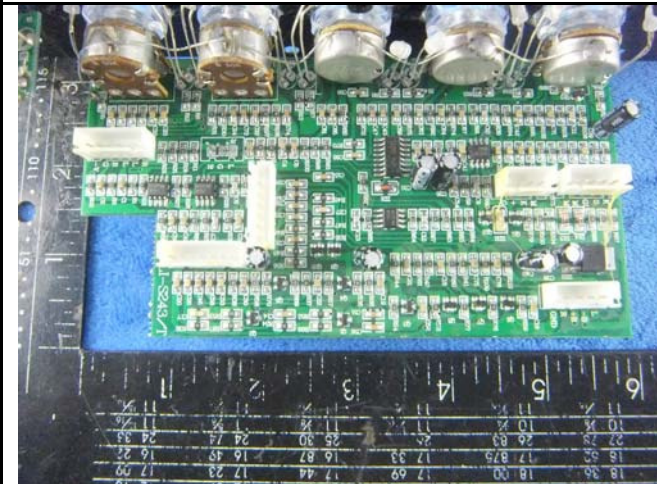
MIC board board - Rear View



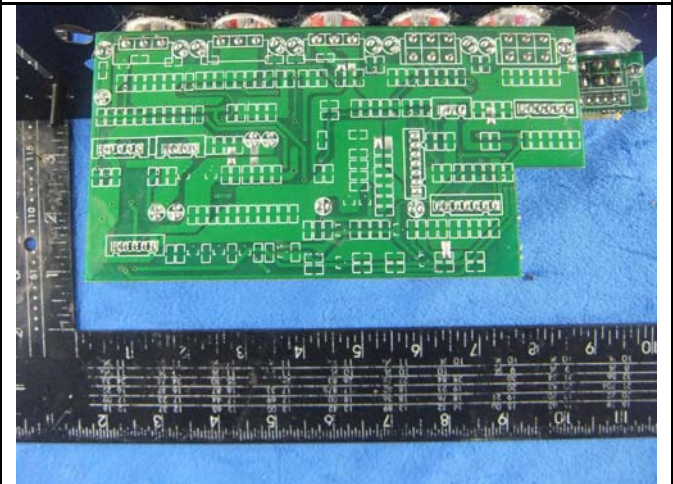
Button board – Front View



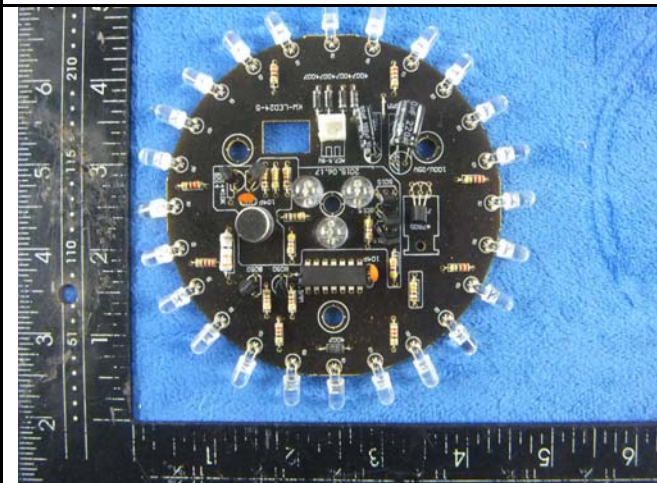
Button board – Rear View



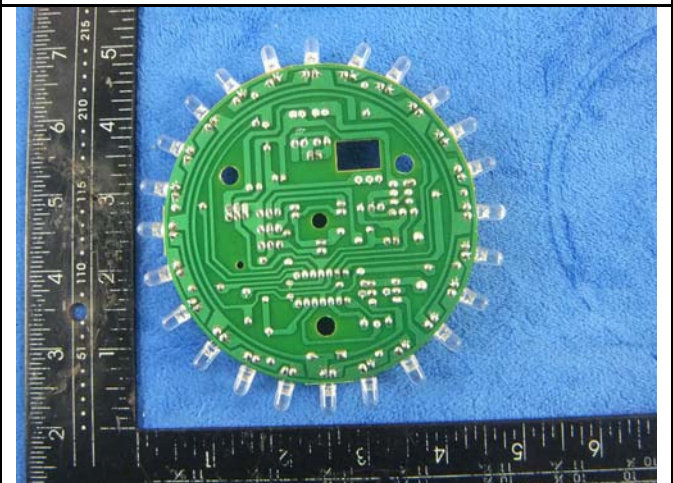
Adjustment board – Front View



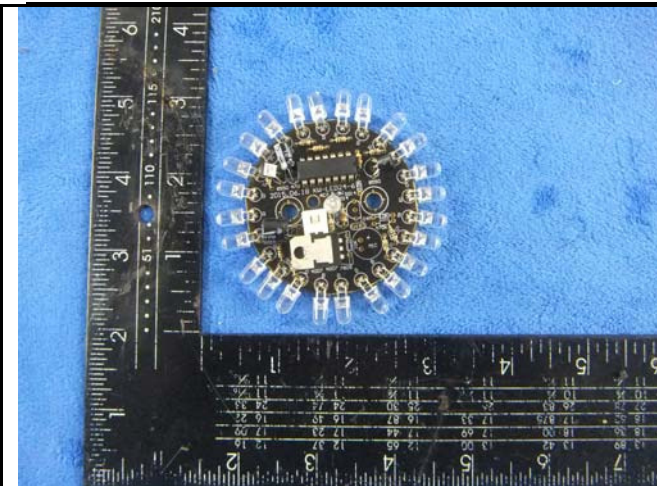
Adjustment board – Rear View



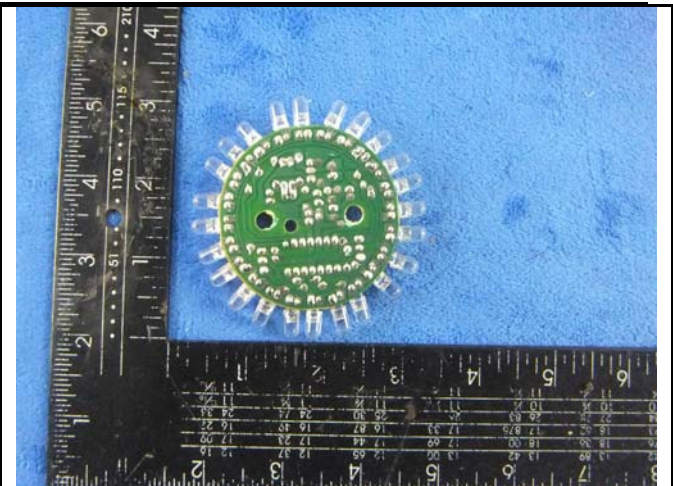
LCD board - Front View



LCD board - Rear View



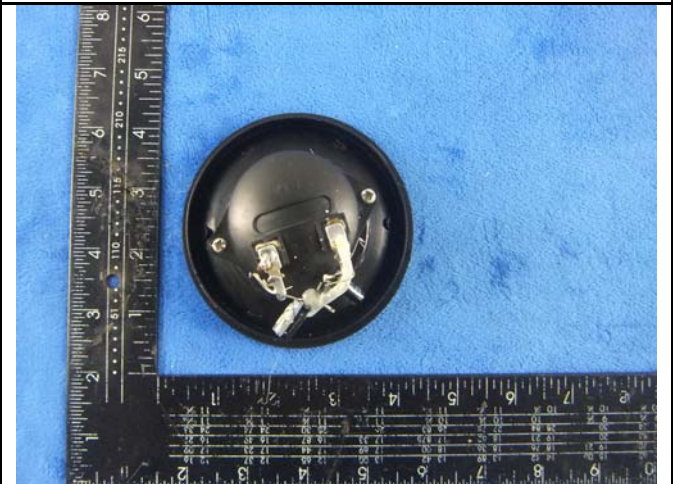
Small LCD board - Front View



Small LCD board - Rear View



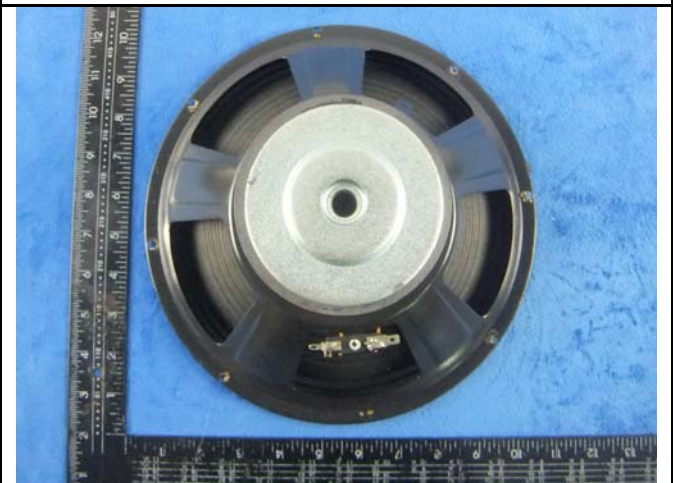
LCD - Front View



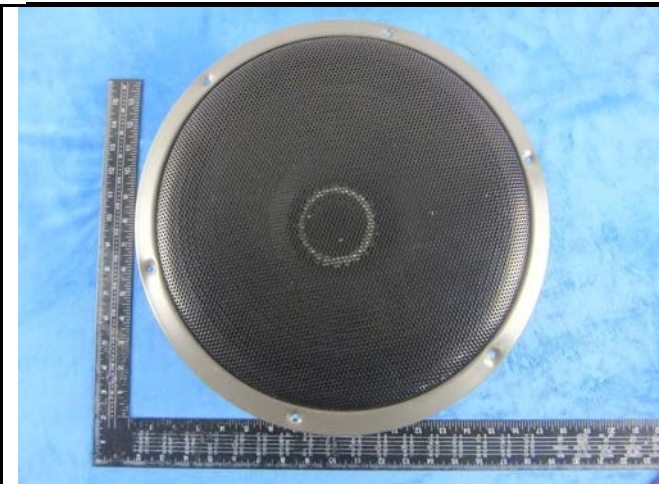
LCD - Rear View



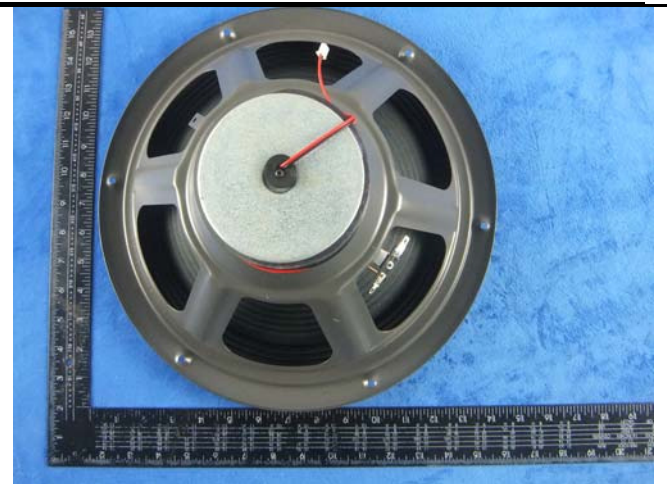
Speaker - Front View



Speaker - Rear View



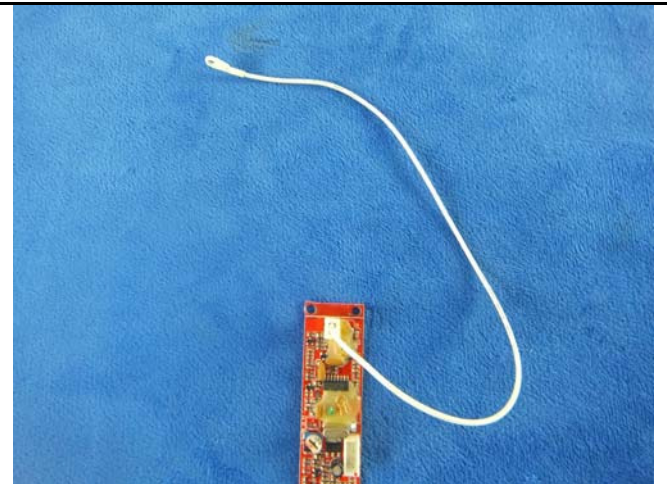
Speaker - Front View



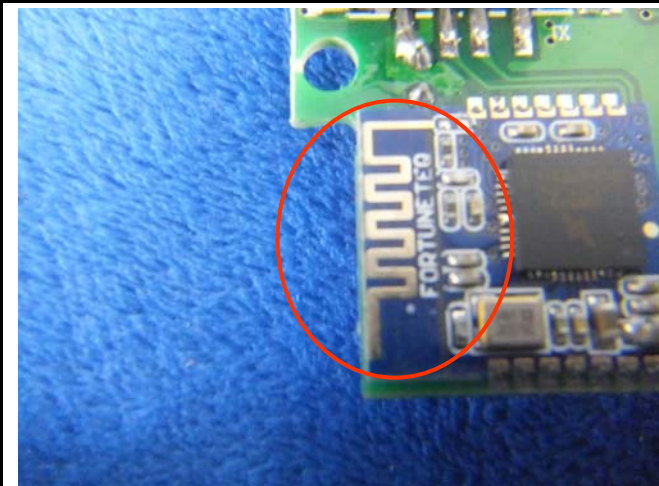
Speaker - Rear View



FM Antenan View



Receiving Antenan View



BT- Antenna View

