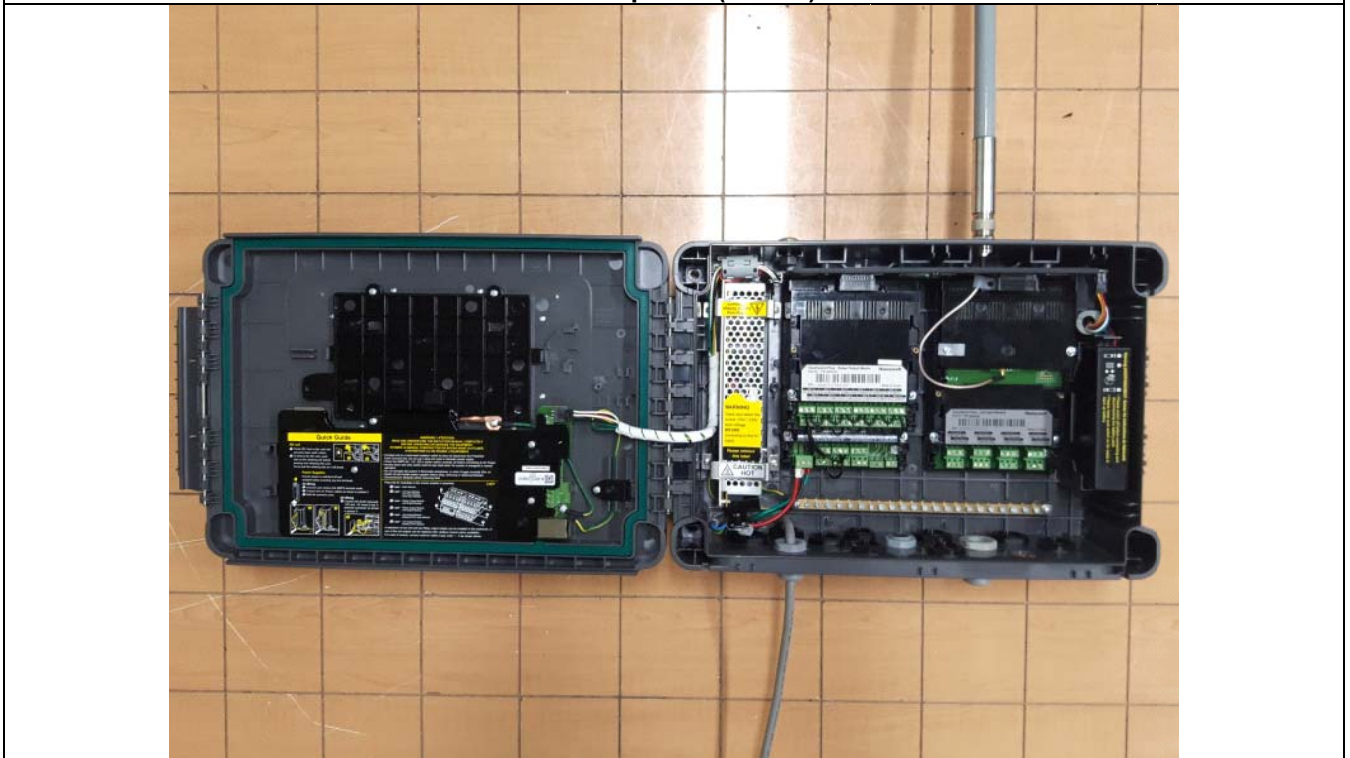
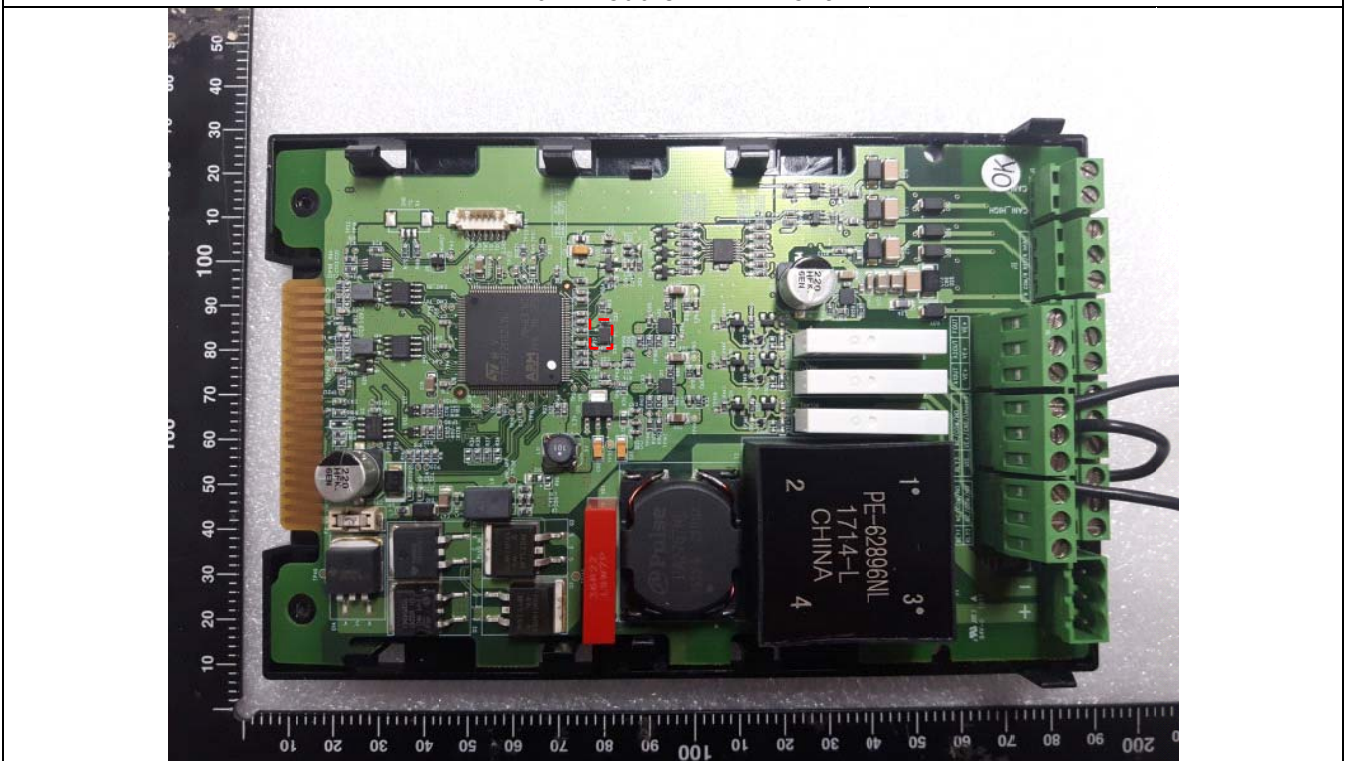


Internal Photo

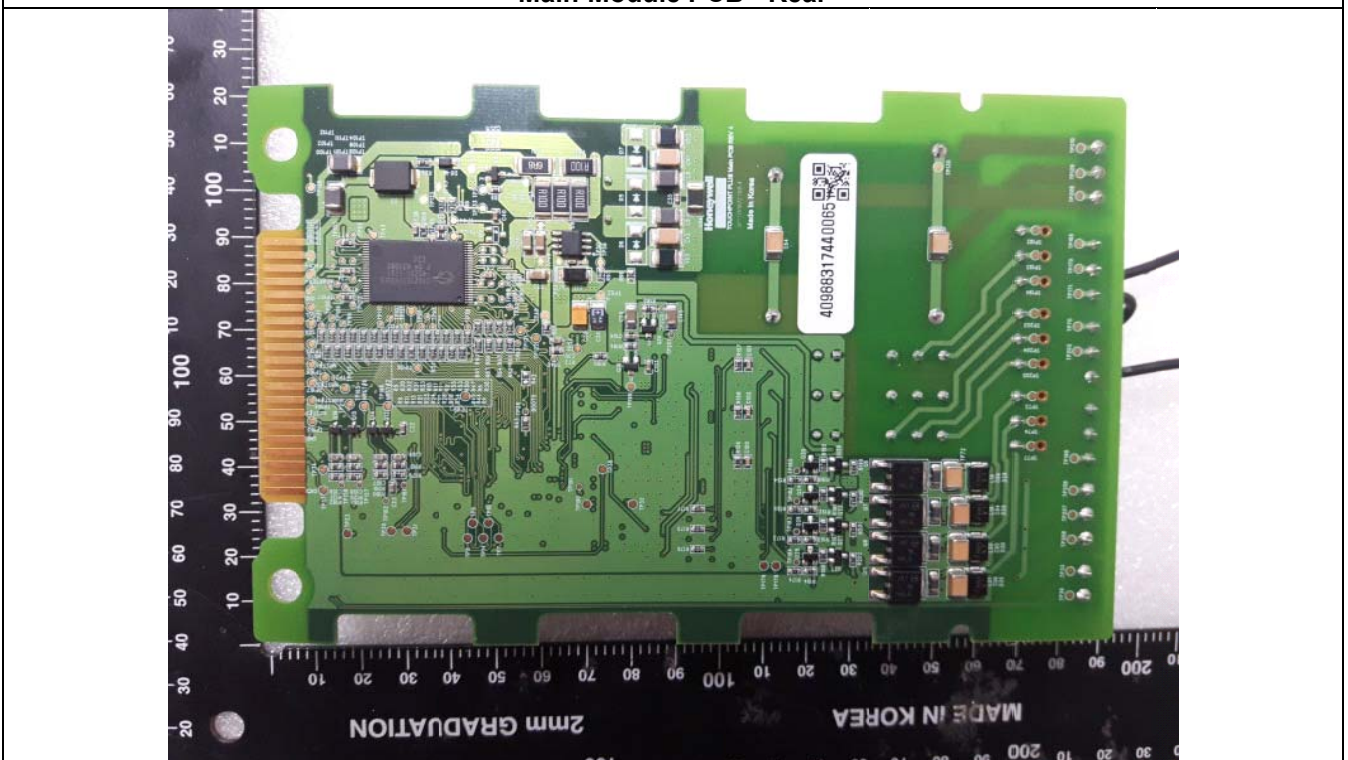
Cover opened (Indoor)



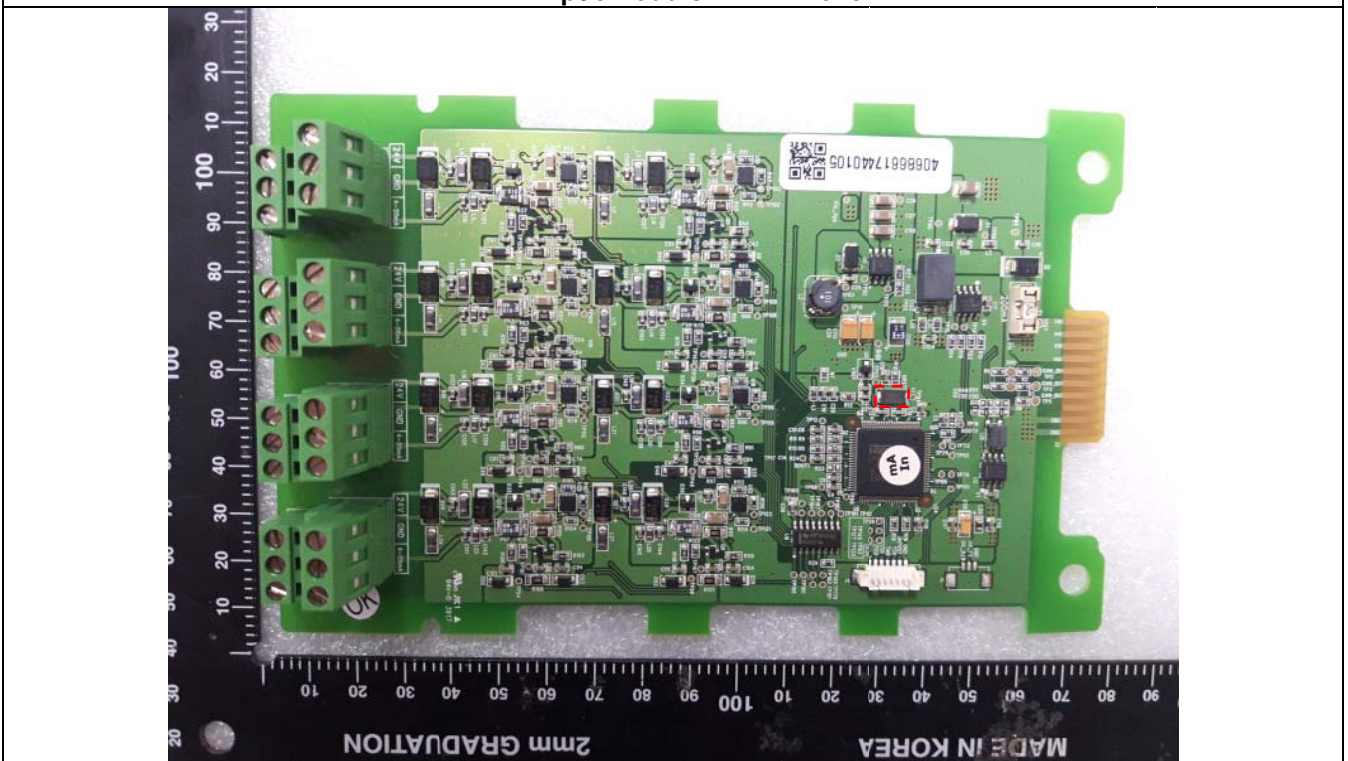
Main Module PCB - Front



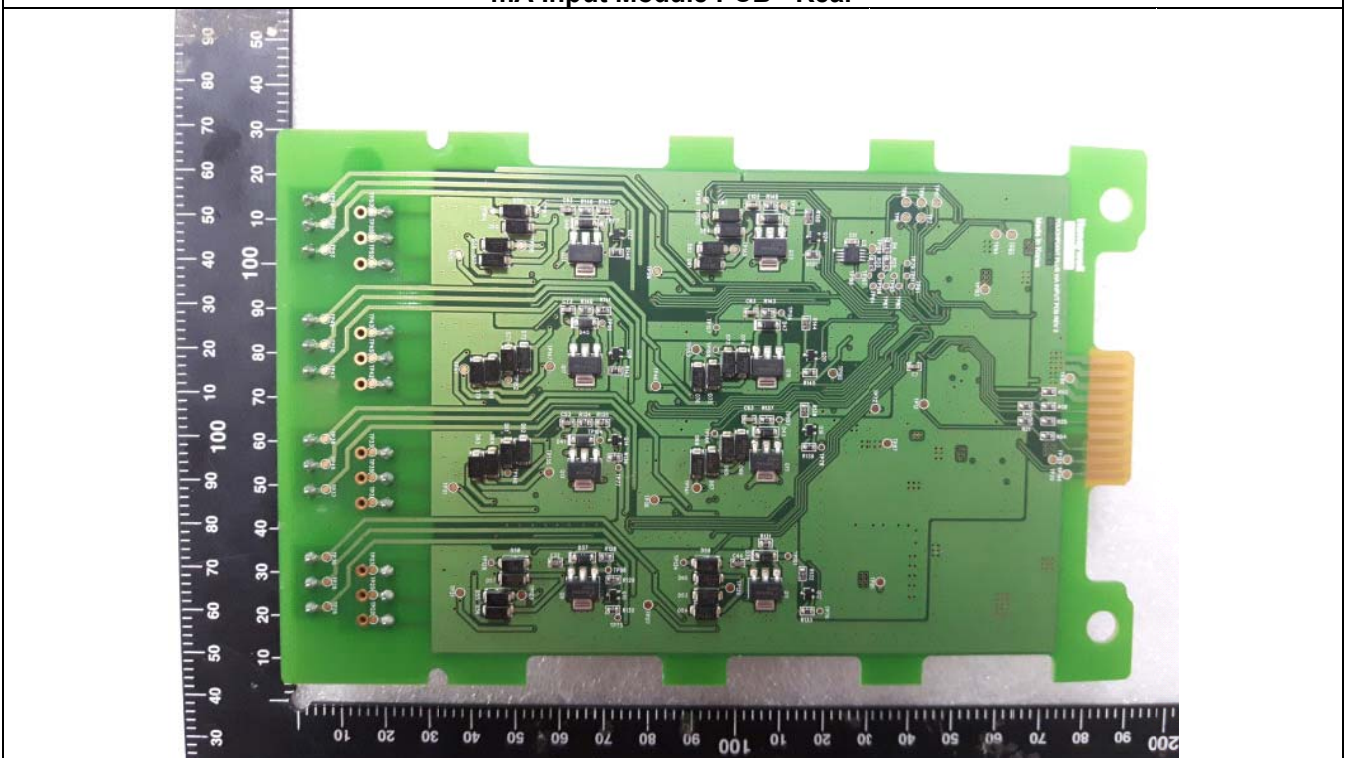
Main Module PCB - Rear



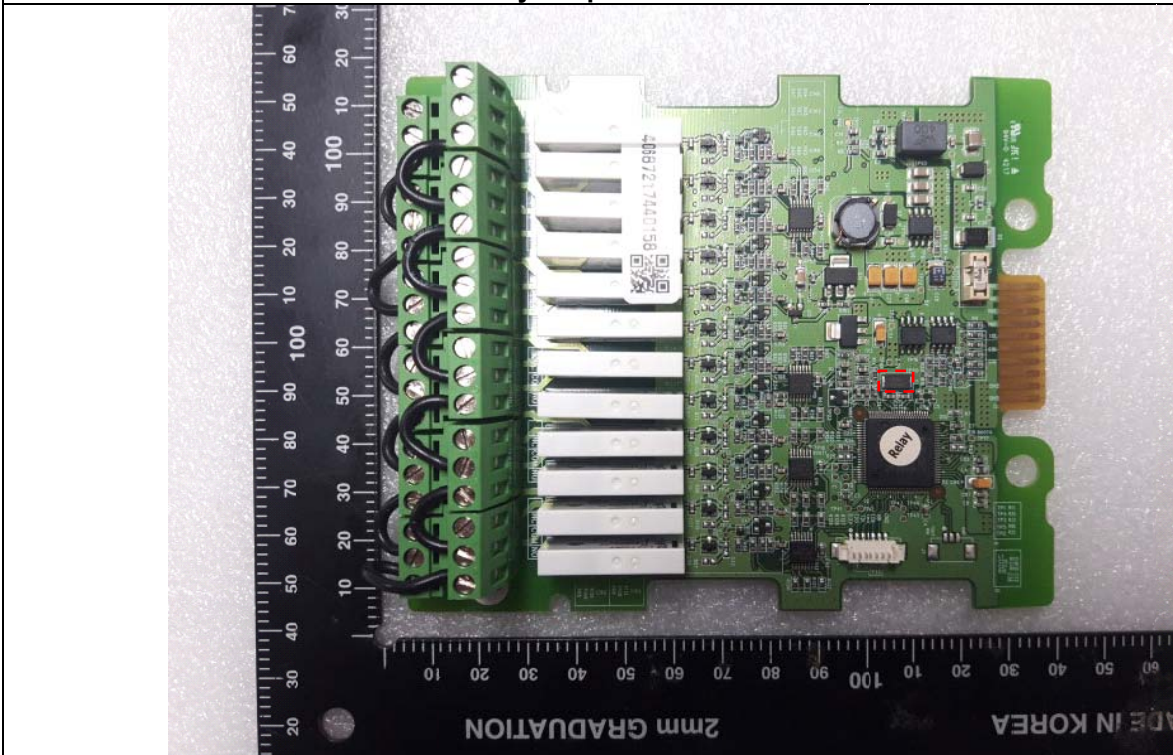
mA Input Module PCB - Front



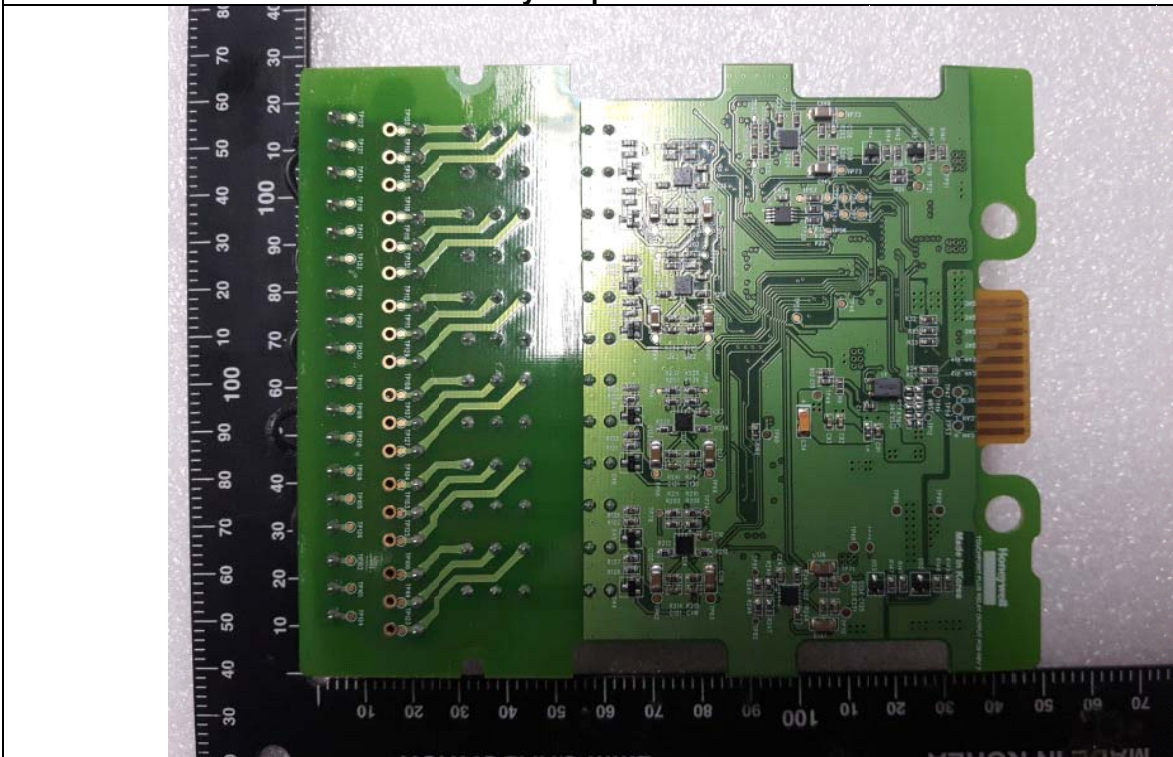
mA Input Module PCB - Rear



Relay Output Module PCB - Front



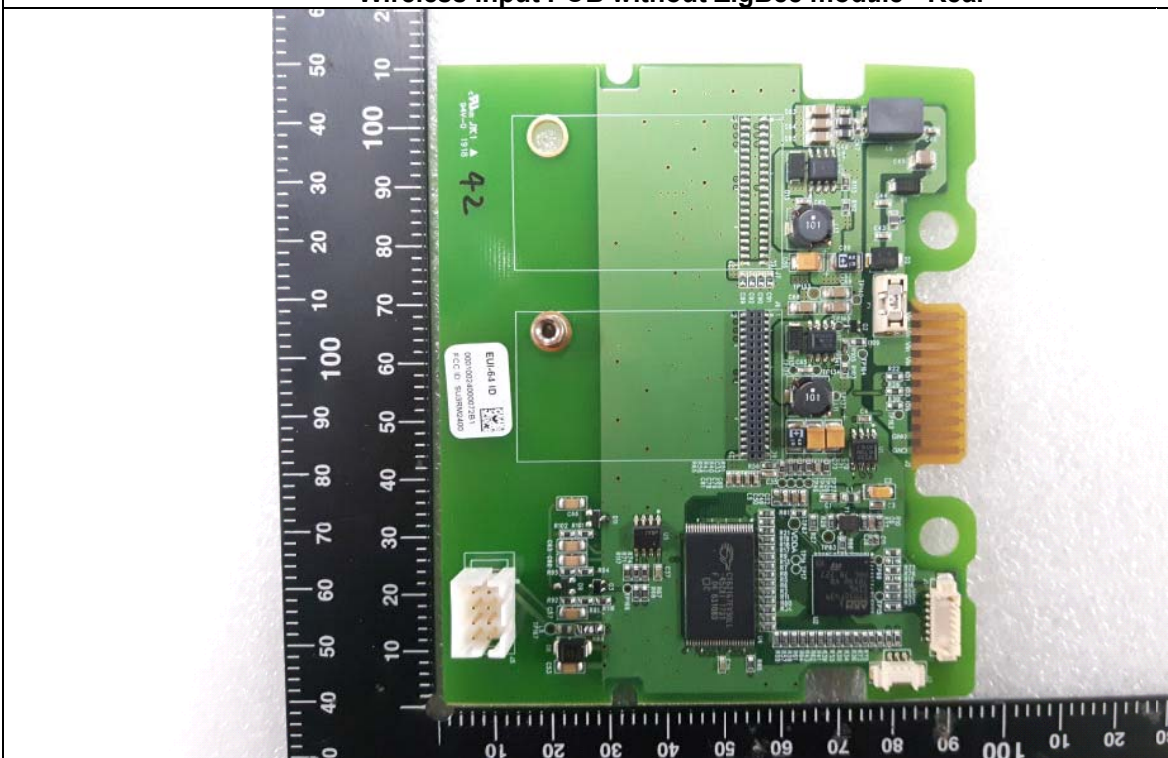
Relay Output Module PCB - Rear



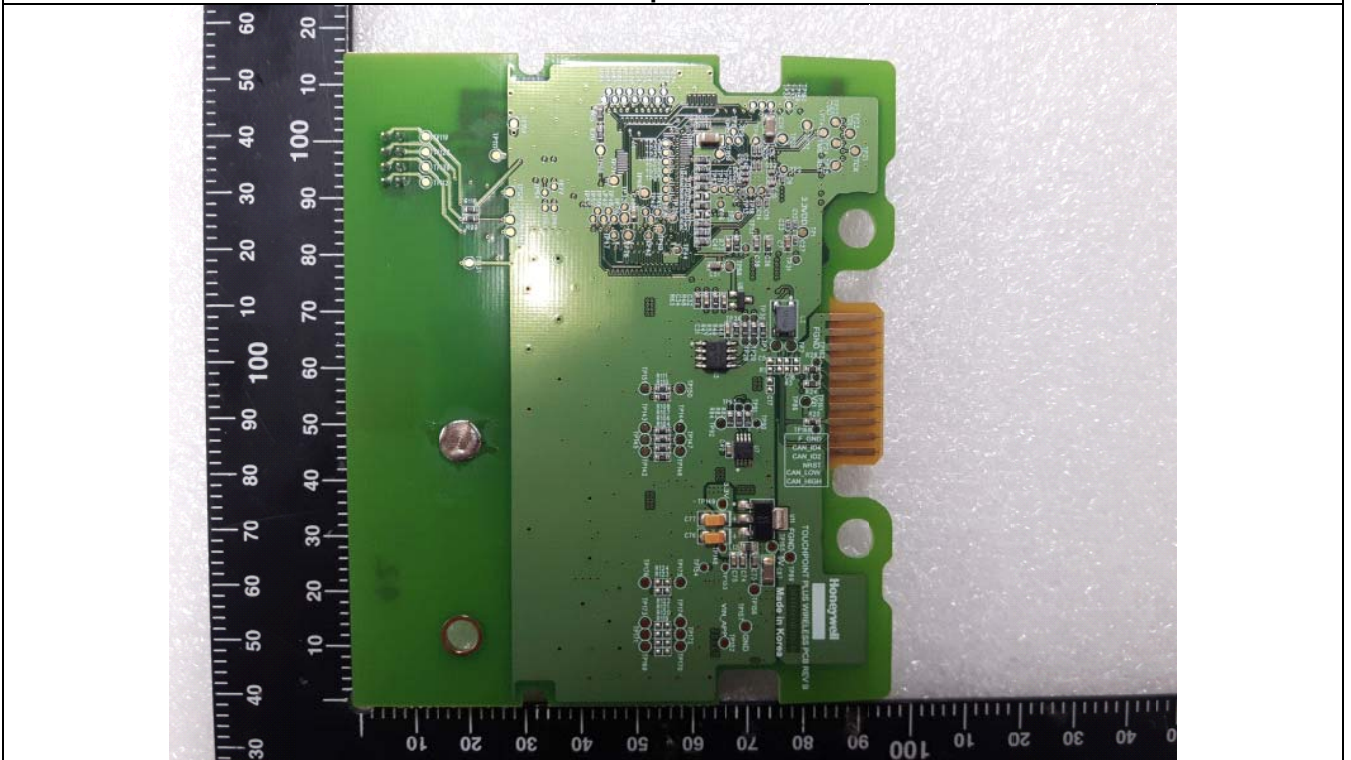
Wireless Input PCB with ZigBee module - Front



Wireless Input PCB without ZigBee module - Rear



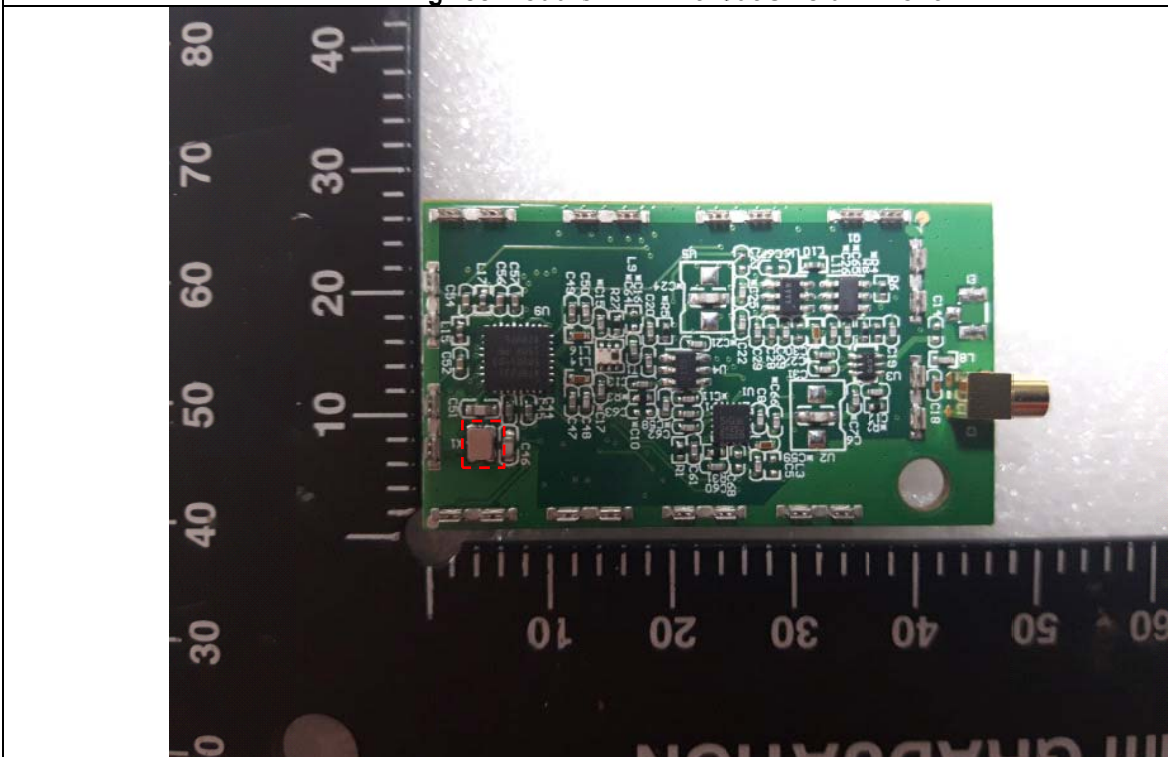
Wireless Input PCB - Rear



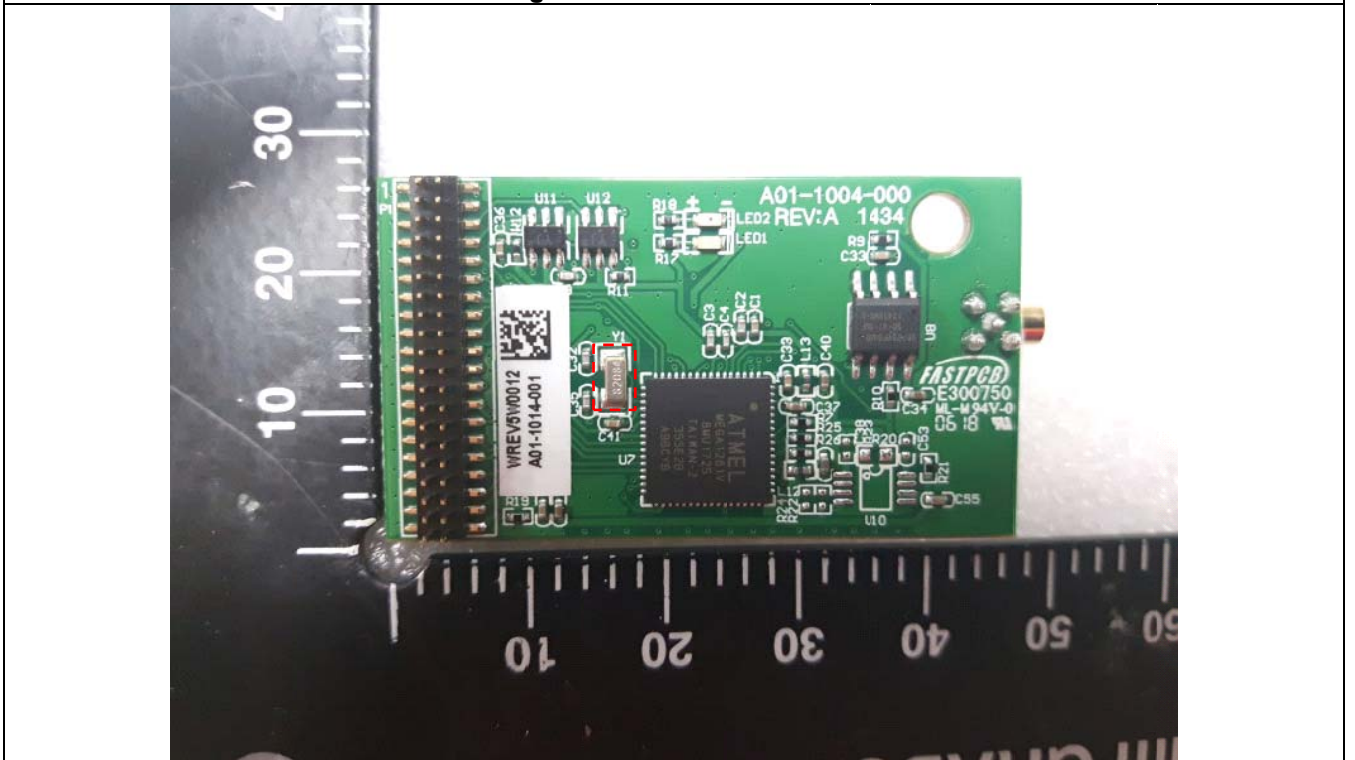
ZigBee Module PCB with shield – Front



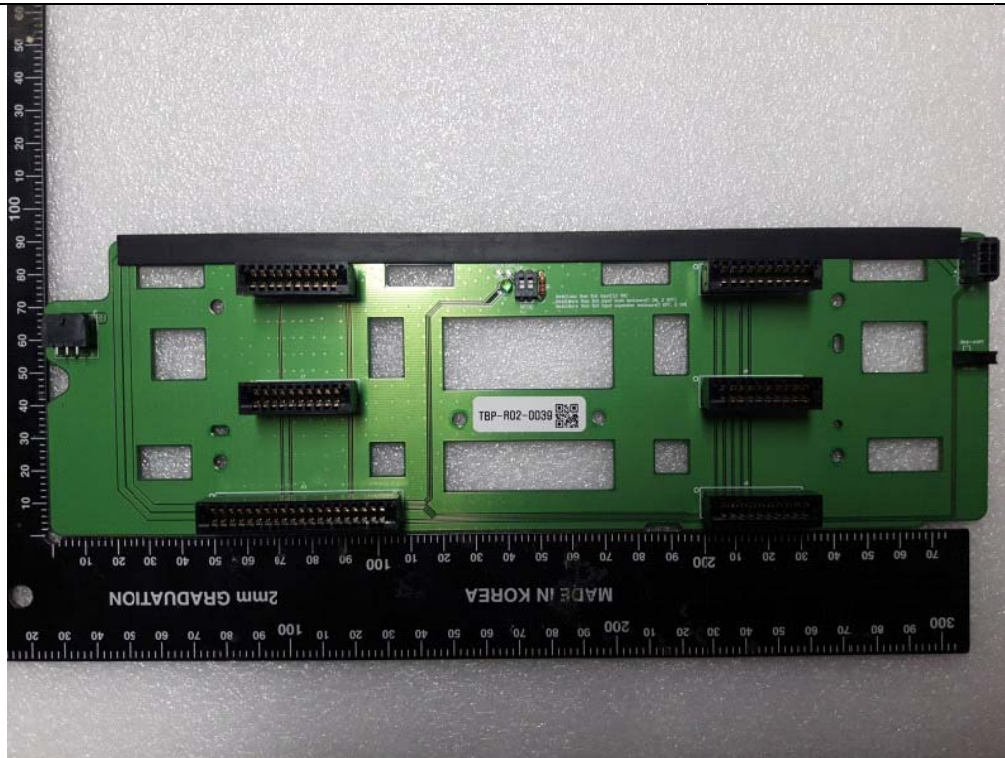
ZigBee Module PCB without shield – Front



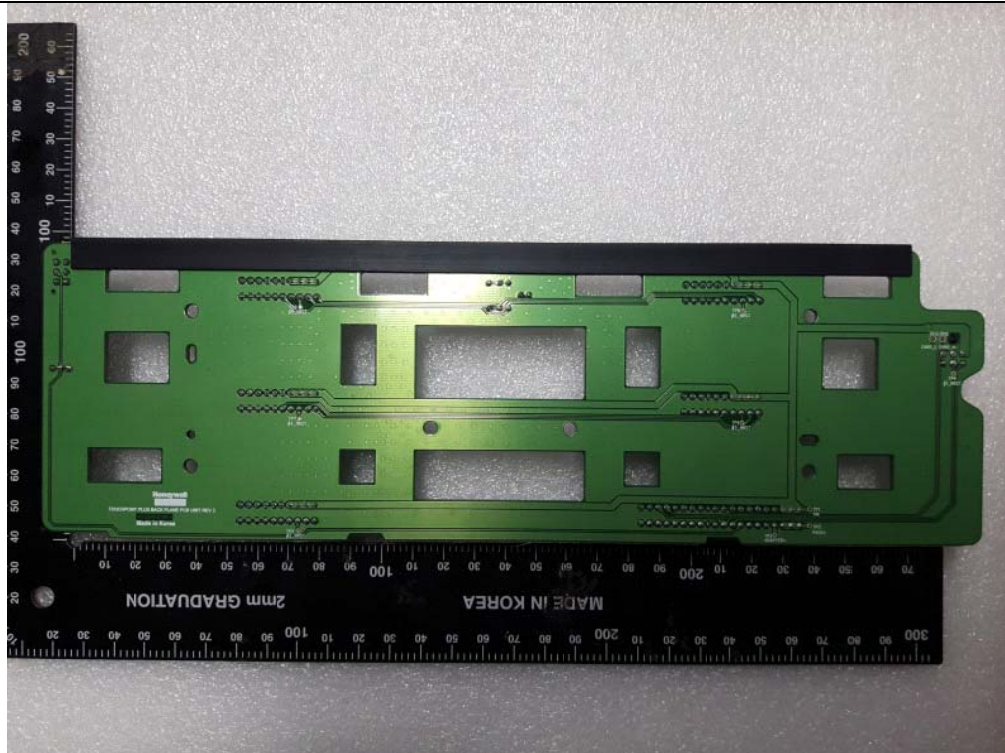
ZigBee Module PCB - Rear



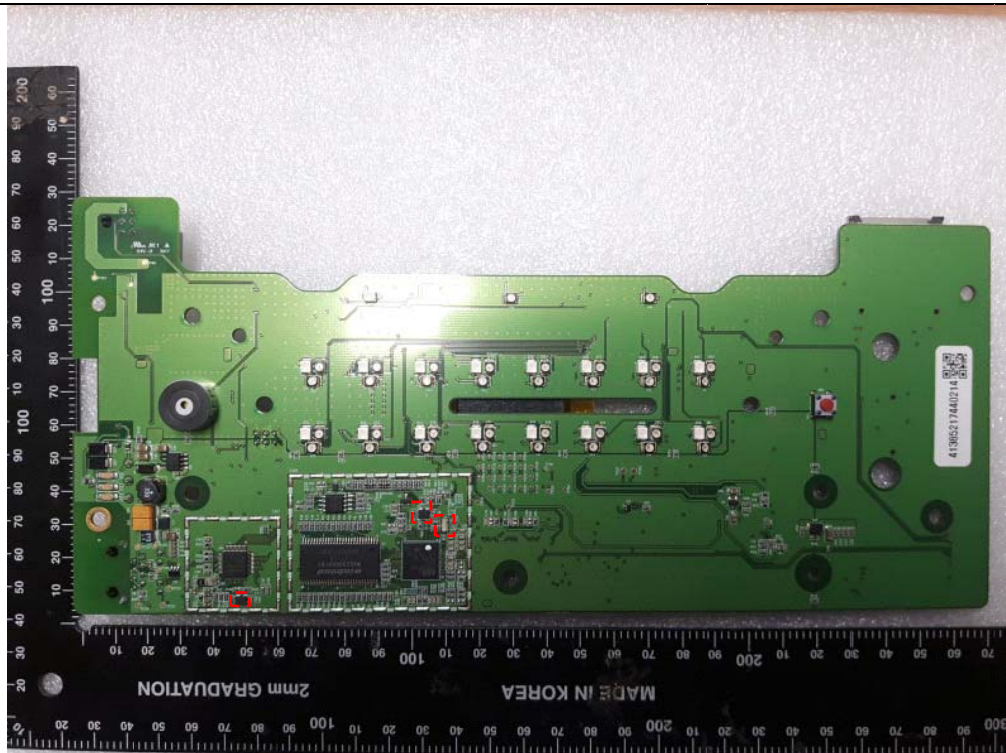
Back Plane PCB Unit - Front



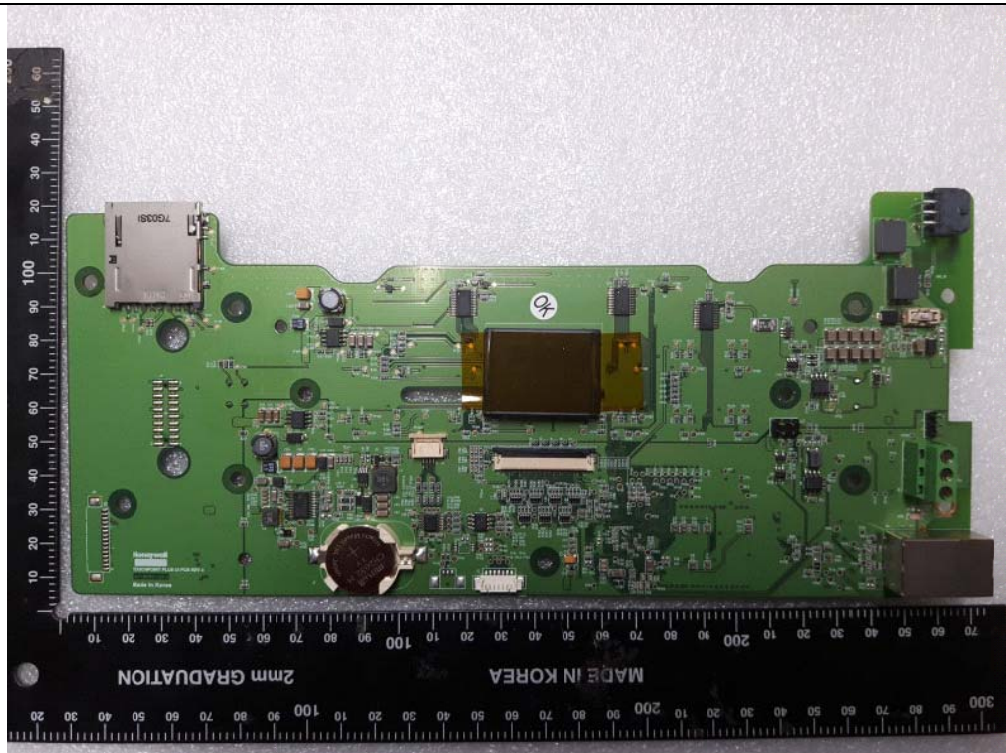
Back Plane PCB Unit - Rear



UI PCB - Front



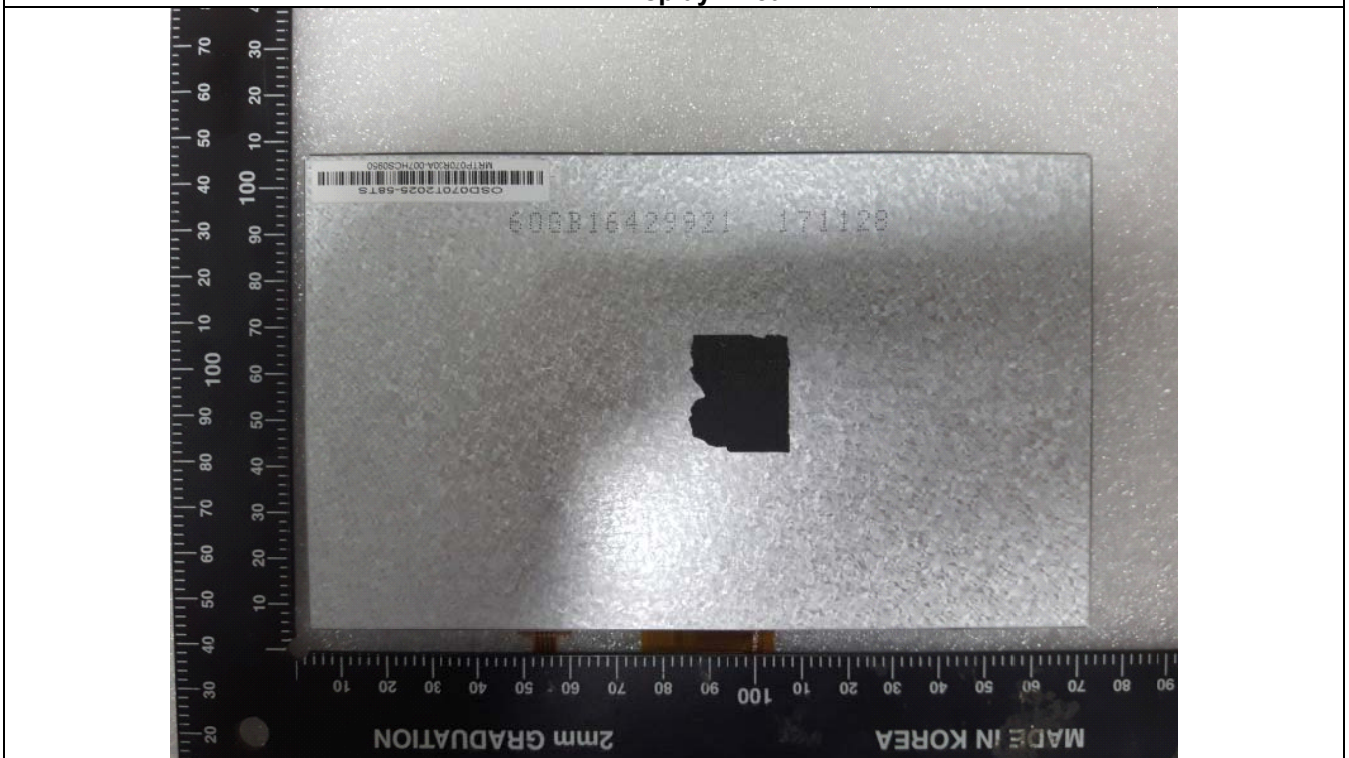
UI PCB - Front



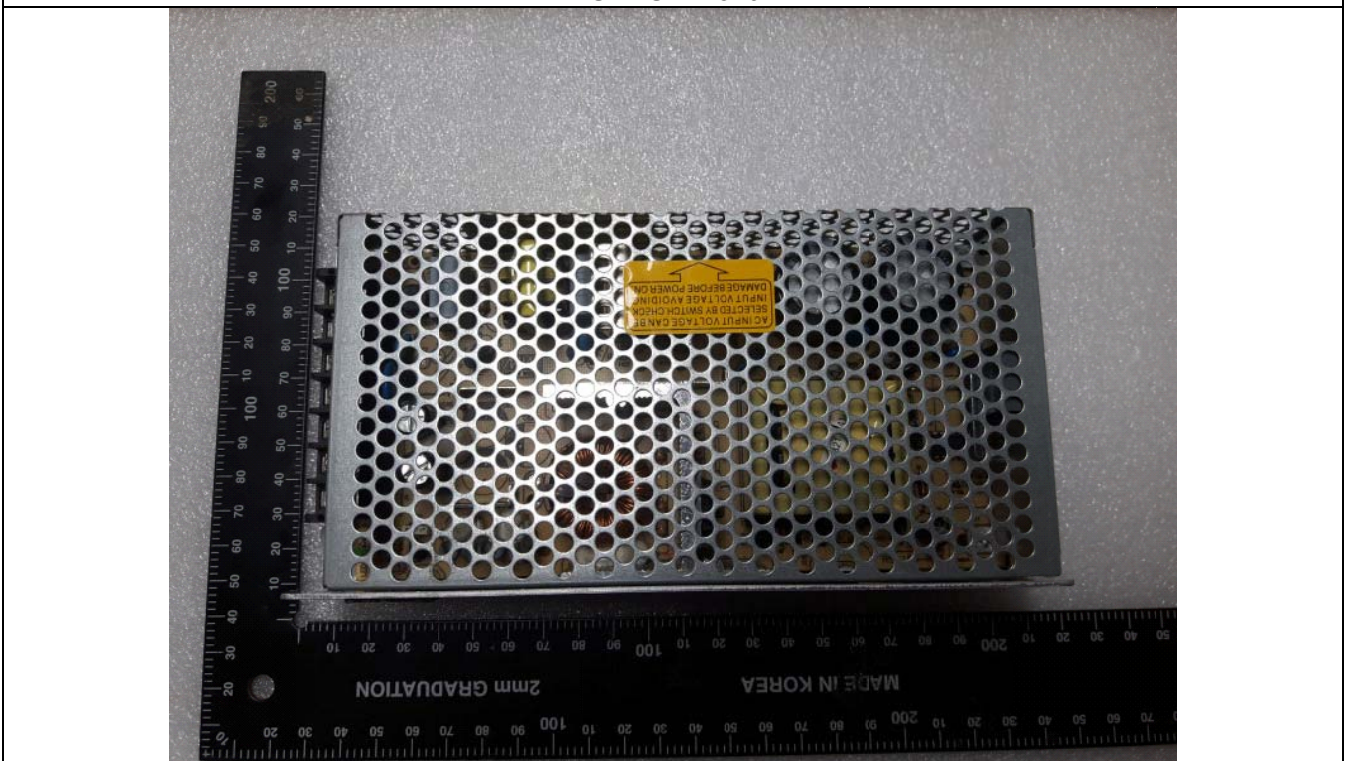
LCD Display - Front



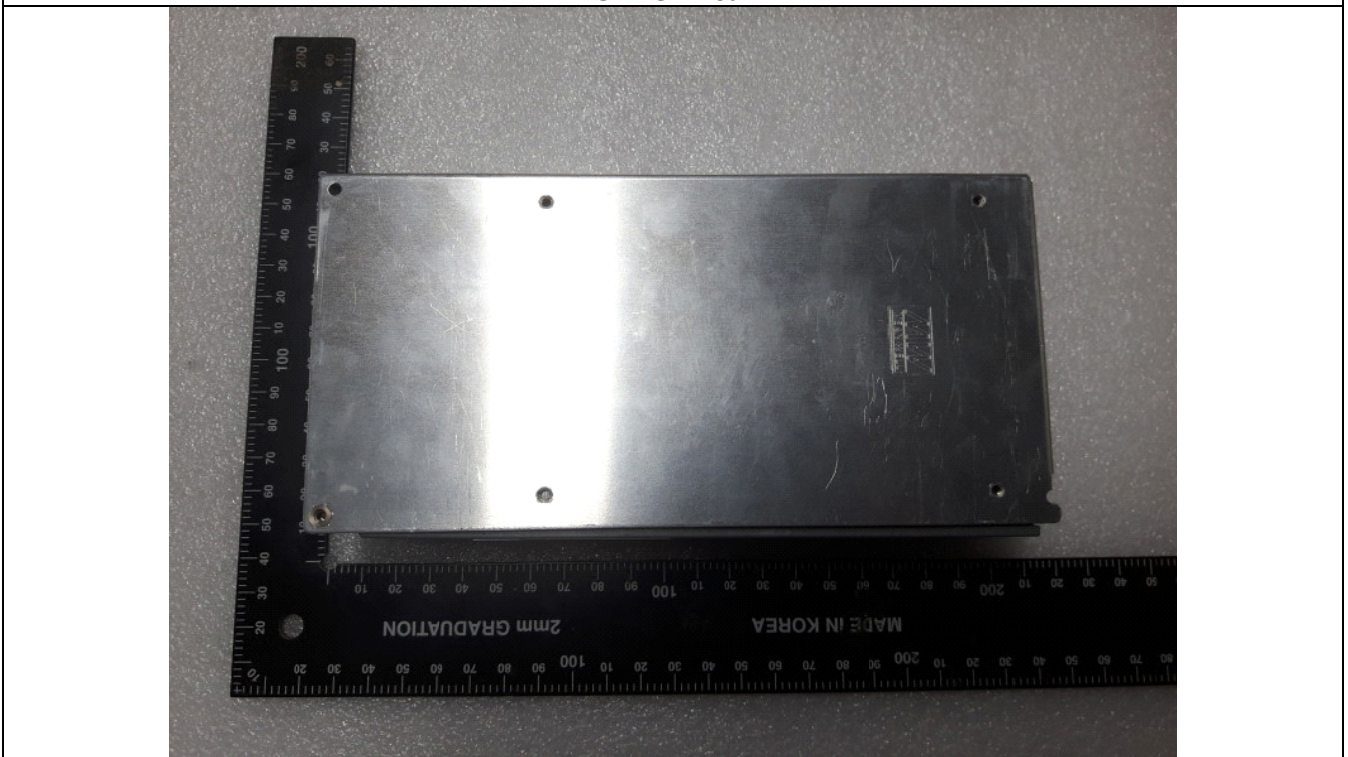
LCD Display - Rear



SMPS - Front



SMPS - Rear



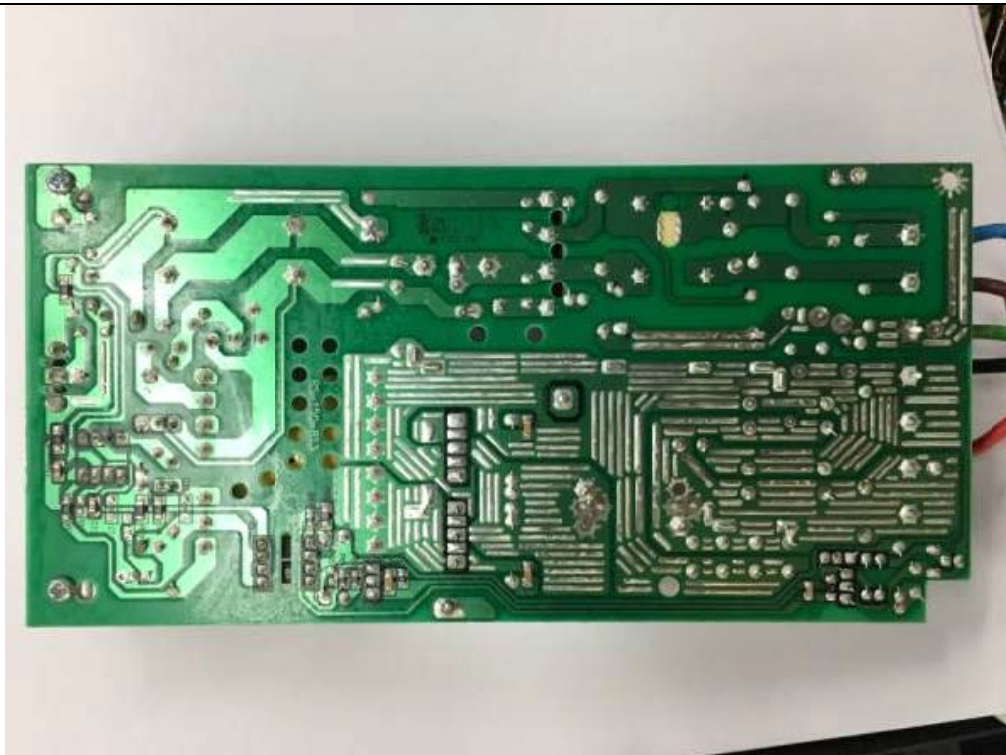
SMPS - Label



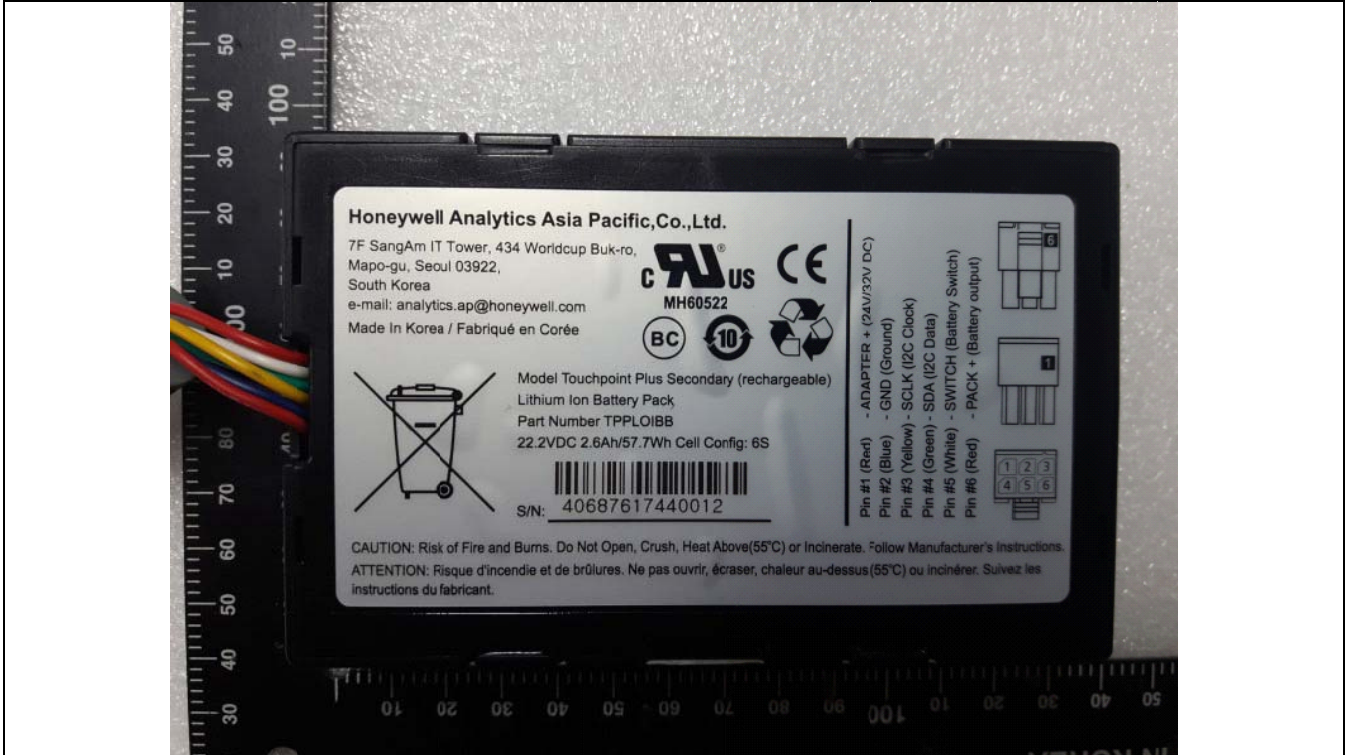
SMPS PCB- Front



SMPS PCB- Rear



Battery Pack - Front



Battery Pack - Rear

