



TABLE OF CONTENTS

Safety	2-3
Warranty/Customer Support	4
Vâri V2312 and V2315	6-8
Specifications	11-12

WELCOME

The Harbinger Vâri 2300 Series Powered Speakers each combine at least 2000 watts of peak power with sound optimizing DSP and versatile inputs, outputs and controls, delivering premium sound reproduction with great flexibility.

V2312 12-inch 2-way Powered Speaker with Bluetooth Audio Input

- 12-inch speaker plus high precision high frequency compression driver
- Bluetooth audio input, dual mic/instrument inputs, dedicated stereo line input and aux input – all available simultaneously
- DSP providing selectable Voicings, easily adjustable Bass and Treble, a transparent and dynamic limiter, and high precision crossover for extremely accurate, high fidelity sound
- Innovative Smart Stereo™ capability, with easy volume and tone control for both speakers from the master unit
- Versatile cabinet allowing free-standing, pole mounted, and lay-flat floor monitor placement

V2315 15-inch 2-way Powered Speaker with Bluetooth Audio Input

- All the same DSP, input, output, control and usage capabilities as the V2312
- A larger 15-inch speaker, delivering additional volume

QUICK START GUIDE: SINGLE V2312/V2315

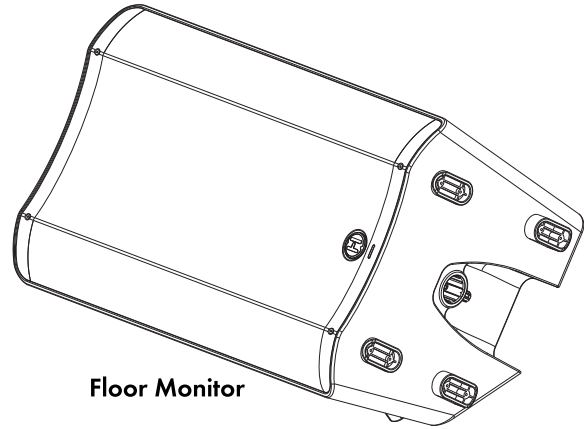
SETTING UP / HELPFUL TIPS

- Position the VâRi speaker in the desired location, and ensure the speaker is stable.
- Make sure the Power Switch is off.
- Turn Channel 1, 2, and 3 knobs to minimum.
- Turn Bass and Treble to center/straight up.

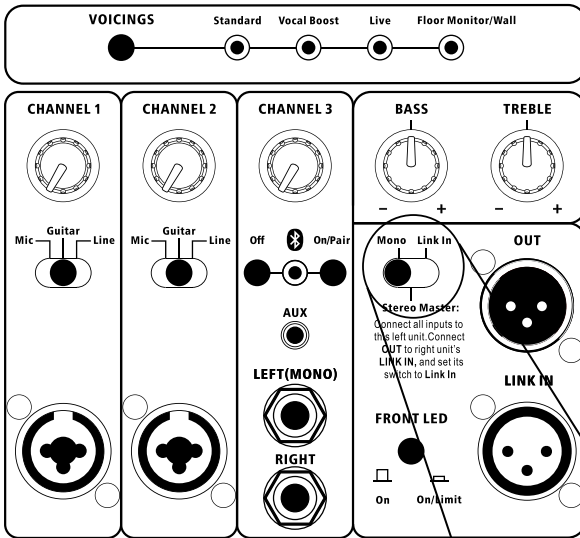
MAKING THE CONNECTIONS

- Connect sources to Channel 1, 2 and 3 input jacks as desired. (All these input jacks can be used at once, along with Bluetooth audio input.)

VâRi Series speakers can be used as Main Speakers or Monitor Speakers.

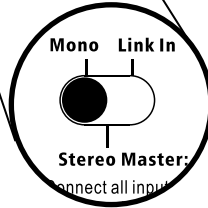


Floor Monitor



CHECK SWITCHES

- Check that Mono / Stereo Master / Link In switch is set to Mono.
- Check that Channel 1 and Channel 2 switches match sources: Mic for microphones, Guitar for acoustic guitar or pedalboard output, Line for mixers, keyboards and other electronics.



POWERING UP

- Power on any devices connected to input jacks.
- Turn up the output volume of all sources.
- Turn Channel 1, 2 and 3 knobs to desired levels.

BLUETOOTH AUDIO INPUT

- From your Bluetooth audio source device, look for V2312 or V2315 and select it.
- See next page for Bluetooth Troubleshooting in case of difficulty.

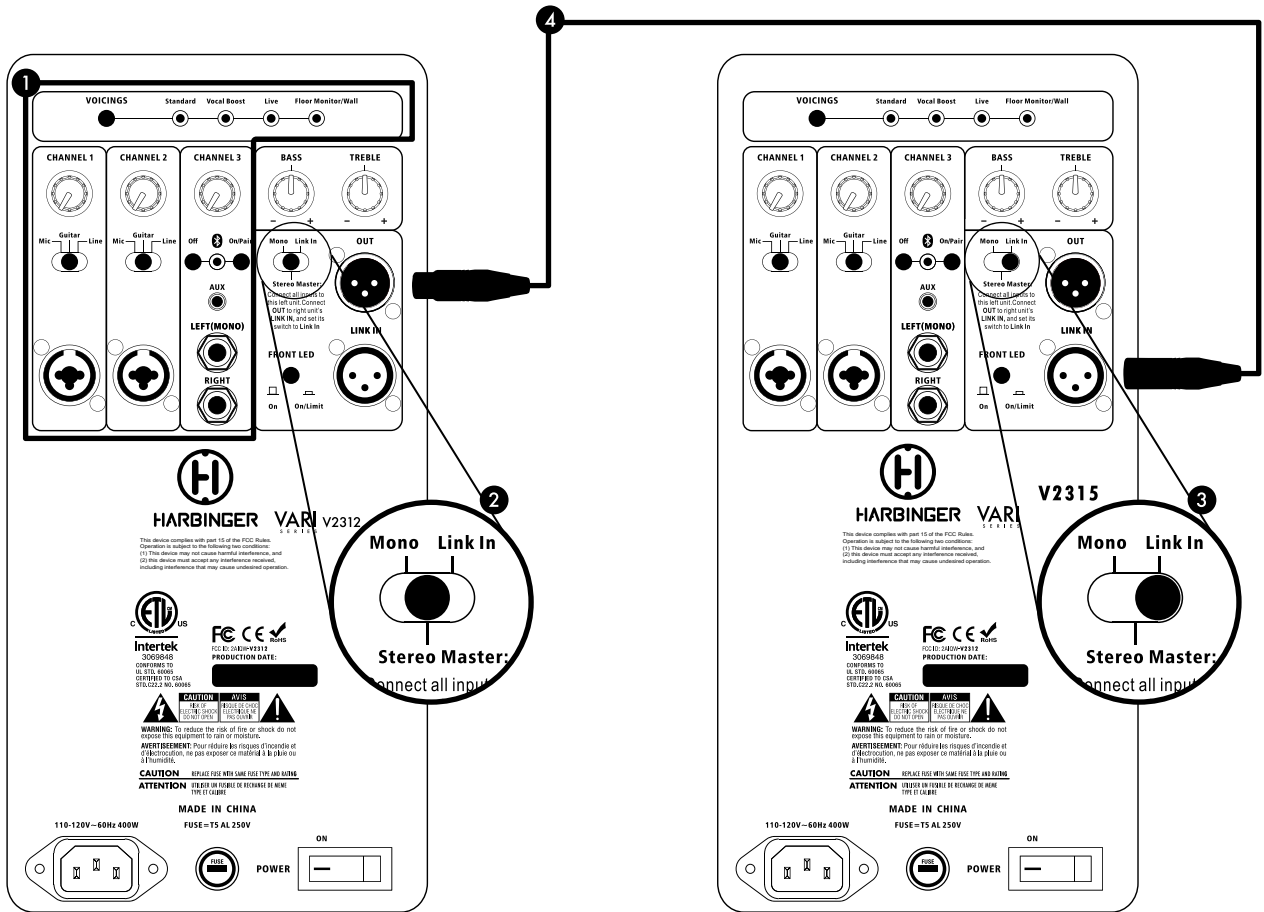
FRONT LED LIGHT

- Check that rear panel button for FRONT LED is pressed in (On/Limit position)
- When front LED lights red, limiter is being triggered, and Channel 1, 2, and 3 knobs may need to be turned down

FOR FLOOR MONITOR USE

- Press rear panel VOICINGS button to light Floor Monitor/Wall LED.

SMART STEREO™ WITH V2312/V2315



A pair of Vâri 2312 or 2315 speakers can operate together as a Smart Stereo™ system, giving you control of the sound and volume of both speakers from the first master speaker, and optimally distributing all audio inputs to both speakers for rich stereo sound.

Channel 1 and 2 inputs are routed mono to both Vâri's, while all Channel 3 inputs are routed in split stereo to the Vâri's.

- 1 Connect all inputs and make all sound settings on the first (left) unit only. The second (right) unit's inputs and controls are all disabled when it is set to Link In.
- 2 Set the switch on first unit to Stereo Master.
- 3 Set the switch on second unit to Link In.
- 4 Connect an XLR (microphone) cable from the first unit's OUT jack to the second unit's LINK IN.

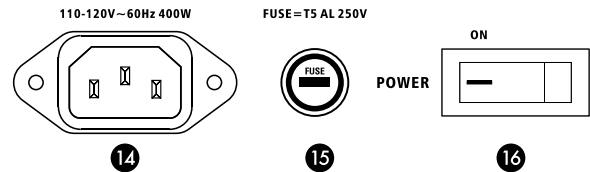
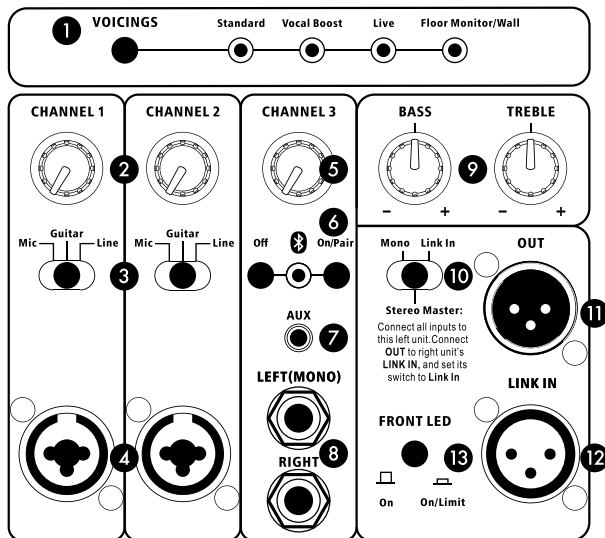
BLUETOOTH® TROUBLESHOOTING

These steps should resolve any Bluetooth trouble you may encounter:

- Power off the V2312 or V2315 and leave it off
- On your Apple iOS device
 1. Open Settings app, select Bluetooth
 2. If V2312 or V2315 is listed under MY DEVICES, touch info button, tap to Forget This Device
 3. Turn off Bluetooth, wait 10 seconds, turn on Bluetooth

- On your Android device
 1. Open Settings, select Bluetooth
 2. If V2312 or V2315 is listed under Paired Devices, touch gear Icon, and tap to Unpair
 3. Turn off Bluetooth, wait 10 seconds, turn on Bluetooth
- Then power on your V2312 or V2315, and Bluetooth LED should flash
- You should now be able to connect to V2312 or V2315 via Bluetooth

V2312/V2315 BACK PANEL



1 VOICINGS

Pressing the button selects from the available voicings (tunings) for different applications:

- Standard: for general use including music playback
- Vocal Boost: for public speaking, may also be helpful for solo performers who are singing along with acoustic guitar
- Live: for live band main PA speakers
- Floor Monitor/Wall: for enhanced clarity and reduced feedback potential for floor monitors, also may be helpful to avoid excessive bass from wall mounted speakers

2 CHANNEL 1 AND 2 KNOBS

These knobs set the volume for the inputs below them

3 MIC/GUITAR/LINE SWITCHES

Set these to match the type of source connected to the input below them

- Mic: for microphones, or line level sources with low output volumes
- Guitar: for acoustic guitar or guitar pedal board
- Line: for line level sources

4 CHANNEL 1 AND 2 INPUT JACKS

Connect XLR or 1/4-inch cables

5 CHANNEL 3 KNOB

Sets the volume for all the inputs below, including Bluetooth audio, aux and line inputs

6 BLUETOOTH AUDIO INPUT

Bluetooth audio input is automatically enabled each time you turn the speaker on, will automatically reconnect to the previous Bluetooth audio source if it is available, and will otherwise be available for Bluetooth pairing from a source audio device such as a smartphone.

- To pair, look for V2312 or V2315 from your Bluetooth audio source device.
- LED is lit solid when currently paired, blinking when available for pairing, and off if Bluetooth has been disabled by a press of the Bluetooth Off button.
- On/Pair button forces any currently connected Bluetooth audio source to disconnect, and makes the speaker available for pairing.
- Off button disables Bluetooth. (Bluetooth will be re-enabled next time you turn power off and on, or if you press the On/Pair button.)

7 AUX INPUT

Audio from smartphones, computers and other consumer audio devices can be connected here

8 BALANCED LINE INPUTS

Balanced or unbalanced line level sources can be connected here

9 BASS AND TREBLE KNOBS

Adjust the sound of your speaker

10 MONO / STEREO MASTER / LINK IN SWITCH

- Mono: This speaker will output mono audio, and send mono audio to the OUT jack so it's available for any other speaker or sound system.
- Stereo Master: This speaker will operate as the master speaker of a Smart Stereo(TM) pair. Use a mic cable to connect this speaker's OUT to the LINK IN jack of a second speaker of the same type. All inputs should be connected to the first master speaker, which will also set the volume and tone of both speakers.
- Link In: Use this setting for the second speaker of a Smart Stereo(TM) pair. The audio from the LINK IN will be routed directly to the power amp and speaker, with all other inputs and controls being ignored. This can also be used to accept mono audio from a previous speaker, with that previous speaker determining volume and tone.

11 OUT JACK

Configured by 10 switch

- Mono: sends out mono audio
- Stereo Master: sends out right audio, for second speaker's LINK IN
- Link In: sends out the same audio received at the LINK IN jack

12 LINK IN JACK

Activated only when 10 switch is set to LINK IN

13 FRONT LED SWITCH

- On: Front LED is lit white when power is on
- On/Limit: LED lights red when limiter is active, and otherwise is lit white

If limiter is continuously or frequently active, turn down Channel 1, 2 or 3 knobs to reduce volume

14 Connect power cable here.

15 If the speaker will not power on and you suspect its fuse may have blown, turn off the power switch, and open the fuse compartment using a small flat blade screwdriver. If metal strip in fuse is broken, replace with T5AL 250V fuse.

16 Switches the power on and off



V2312/V2315 SPECIFICATIONS

HARBINGER VâRi Series		V2312	V2315
Amplifier	DSP	Selectable Voicing (Standard, Vocal Boost, Live, Floor Monitor/Wall) and Bass and Treble knobs all control the internal DSP to customize the sound	Selectable Voicing (Standard, Vocal Boost, Live, Floor Monitor/Wall) and Bass and Treble knobs all control the internal DSP to customize the sound
	Limiter	Transparent, dynamic DSP limiter for ideal sound quality and system protection at maximum volume	Transparent, dynamic DSP limiter for ideal sound quality and system protection at maximum volume
	Smart Stereo	A pair of speakers can be connected for unified volume and tone control from the first master speaker, with optimal distribution of mono and audio signals between both speakers	A pair of speakers can be connected for unified volume and tone control from the first master speaker, with optimal distribution of mono and audio signals between both speakers
	Input 1	XLR and 1/4-inch TRS balanced/unbalanced compatible audio input with Mic/Guitar/Line Switch and Input Gain Control	XLR and 1/4-inch TRS balanced/unbalanced compatible audio input with Mic/Guitar/Line Switch and Input Gain Control
	Input 2	XLR and 1/4-inch TRS balanced/unbalanced compatible audio input with Mic/Guitar/Line Switch and Input Gain Control	XLR and 1/4-inch TRS balanced/unbalanced compatible audio input with Mic/Guitar/Line Switch and Input Gain Control
	Input 3	Stereo Line: Left/mono and right 1/4-inch TRS balanced/unbalanced compatible audio line inputs Aux: 1/8-inch mini TRS unbalanced input (-10dB) Bluetooth Audio: with On/Pair and Off buttons plus LED	Stereo Line: Left/mono and right 1/4-inch TRS balanced/unbalanced compatible audio line inputs Aux: 1/8-inch mini TRS unbalanced input (-10dB) Bluetooth Audio: with On/Pair and Off buttons plus LED
	Link In	XLR balanced +4dBv audio input	XLR balanced +4dBv audio input
	Out Jack	XLR balanced +4dBv audio output	XLR balanced +4dBv audio output
	Power Output	2000 Watts Peak	2000 Watts Peak
	Bass EQ Knob	+/-12dB Shelf, 100Hz	+/-12dB Shelf, 100Hz
	Treble EQ Knob	+/-12dB Shelf at 10kHz	+/-12dB Shelf at 10kHz
	Volume	volume control per channel	volume control per channel
	Power Input	115V/60 Hz	115V/60 Hz
	Features		Removable AC Power Cord
		Front LED, configurable to indicate power or power/limiter	Front LED, configurable to indicate power or power/limiter
		Voicing button and 4 voicing indicator LEDs	Voicing button and 4 voicing indicator LEDs
Speaker	Type	12" 2-way vented design	15" 2-way vented design
	Frequency Response	40-20K Hz	40-20K Hz
	Max SPL (@1M)	126dB	127dB
	HF Driver	Compression Driver, 8 Ohm	Compression Driver, 8 Ohm
	LF Driver	12" Driver, 4 Ohm	15" Driver, 4 Ohm
	Cabinet	Polypropolene, with rubber surfaced handles and feet	Polypropolene, with rubber surfaced handles and feet
	Grille	1.2mm steel	1.2mm steel
	Suspension Points	V2312 Is Not Designed For Suspension	V2315 Is Not Designed For Suspension
	Pole Mount	35mm stand pole with M6 screw	35mm stand pole with M6 screw
	Product Dimensions	14.2" x 14.2" x 24.1"	16.5" x 15.0" x 27.1"
Dimensions and Weights	Packaging Size	18.1" x 18.1" x 28.1"	20.1" x 19.5" x 31.1"
	Net Weight	35 pounds	41 pounds
	Gross Weight	45 pounds	50 pounds