



atomi Smart Outdoor Plug

User Manual



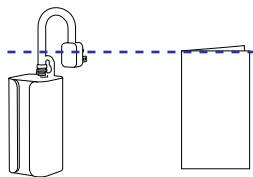
Watch Video
Open your smartphone camera and point it at the QR Code

Thank you for purchasing the atomi Smart Outdoor Plug

The atomi Smart Outdoor Plug is brilliantly designed to make your life easier and simple to manage. Any device you plug into the Smart Outdoor Plug can be controlled through the atomi smart app.

Turn on and off outdoor plug-in devices, such as outdoor lighting, decorations, small appliances and more up. If you can plug it in, you can control it.

Includes:

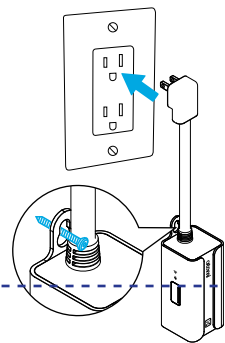


Smart Outdoor Plug User Manual

Before you begin

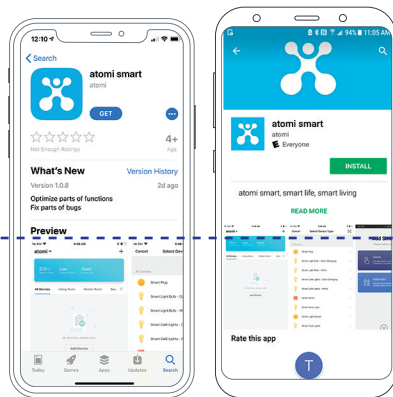
1. Know your Wi-Fi network and password.
2. Make sure your mobile device is running iOS® 8 or higher or Android™ 4.1x or higher.
3. Make sure light/lamp source is always turned on.
4. Make sure you're connected to a 2.4GHz Wi-Fi network (atomi smart app can't connect to 5GHz networks.)

Step 1: Unit Mounting



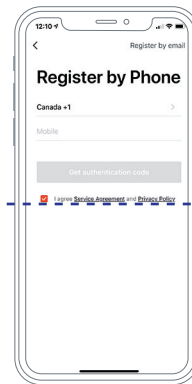
1. Unpack Smart Outdoor Plug from the box.
2. Plug your Smart Outdoor Plug into a grounded wall outlet and let the unit hang down freely.
3. Note approximate location of the hang tab. Remove the Smart Outdoor Plug and install mounting screw (not included) so that the weight of the unit rests on the mounting screw and not the power cord.
4. Plug the Smart Outdoor Plug back into the grounded outlet and install onto the mounting screw.
5. Ensure the Smart Outdoor Plug receptacles are facing downward.

Step 2: Download App

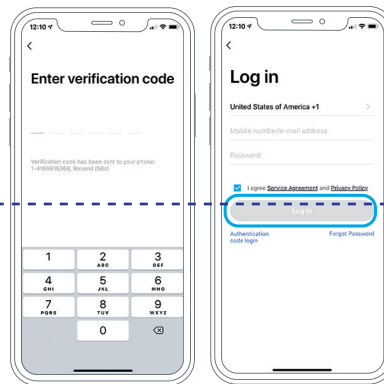


Download the atomi smart app from the App Store or Google Play.

Step 3: Register



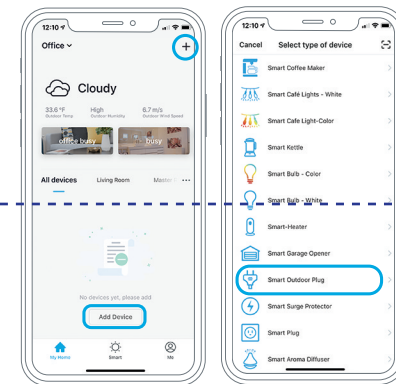
Enter your mobile phone number or email address.



Enter the verification code and create a password.

Log into the app.

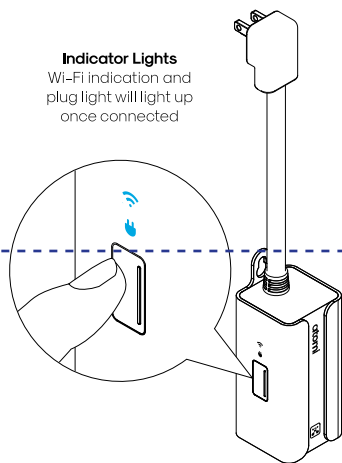
Step 4: Add Device



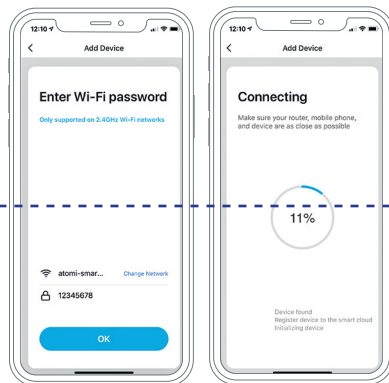
Select "Add Device" or click (+) at the top right corner of the Devices screen.

Choose "Smart Outdoor Plug" from the Device list.

Step 5: Connect



Hold the power button for 10 seconds until the indicator light is flashing rapidly, then press "CONTINUE" in the atomi smart app.

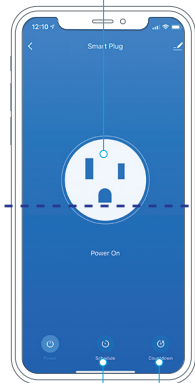


Enter your Wi-Fi network and password.

The atomi smart app will connect your device.

Controls

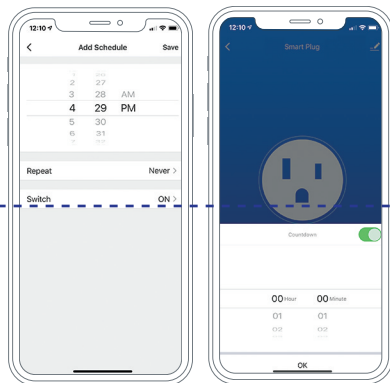
ON/OFF
Press to turn
Smart Outdoor Plug ON/OFF.



Schedule
Set up weekly schedules to fit your lifestyle.

Countdown
Set a countdown to power off Smart Outdoor Plug.

Scheduling Countdown



Set up weekly schedules to fit your lifestyle.

Set a countdown to power off Smart Outdoor Plug.

Troubleshooting

Cannot connect to your Wi-Fi network.
Make sure you entered the correct Wi-Fi password during the Wi-Fi setup. Check if there are problems with your internet connection. If the Wi-Fi signal is too weak, reset your Wi-Fi router and try again.

What can I control with the Smart Outdoor Plug?
You can control outdoor lighting, decorations, small appliances in accordance with the Smart Outdoor Plug's specifications.

What should I do when I can't turn devices on or off using atomi smart app?

1. Make sure the devices connected to the Smart Outdoor Plug are turned ON.
2. Make sure your mobile device and Smart Outdoor Plug is connected to the same network.

I'm still having trouble!

Wi-Fi networks come in a lot of shapes and sizes with many quirks of their own. It doesn't mean your Smart Outdoor Plug is malfunctioning. If problems persist, please try these steps, in order:

1. Force quit and re-launch the atomi smart app. Check to see if this fixes the issue.
2. Unplug Smart Outdoor Plug and plug it back in. Check to see if this fixes the issue.
3. Unplug your router and plug it back in. Check to see if this fixes the issue.
4. Delete and reinstall the atomi app. Check to see if this fixes the issue.
5. If all else fails, restore your Smart Outdoor Plug to factory settings: First, Unplug your Smart Outdoor Plug. Plug it back in and hold the power button for 10 seconds.

FCC Notice:

This device complies with Part 15 of the FCC Rules. Operation is subject to the two following conditions:

1. This device may not cause harmful interference.
2. This device must accept any interference received, including interference that may cause undesired operation.

Changes or modifications not expressly approved by the party responsible for compliance could void the user's authority to operate the equipment.

NOTE: This equipment has been tested and found to comply with the limits for a Class B digital device, pursuant to Part 15 of the FCC Rules. These limits are designed to provide reasonable protection against harmful interference in a residential installation.

CAUTION: Suitable for indoor use only.

DO NOT IMMERSE IN WATER.

DO NOT EXCEED RATED CAPACITY.

Made in China

! WARNING

This product can expose you to chemicals including Lead, which is known to the State of California to cause cancer and birth defects or other reproductive harm. For more information, go to www.P65Warnings.ca.gov.

For questions or concerns, email us at support@atomiusa.com

Manufactured and marketed by Atomi, Inc.

10 West 33rd St., New York, NY 10001

atomi™ is a trademark of Atomi, Inc.

atomi smart is a registered trademark of Atomi, Inc.

Designed by atomi in New York. Made in China

One-year limited warranty from date of purchase against defects in materials and workmanship.

Google is a trademark of Google LLC. Amazon, Alexa and all related logos are trademarks of Amazon.com, Inc. or its affiliates.

Can't connect? Need help?



**DO NOT RETURN THIS
PRODUCT TO THE STORE**

Call 1-800-757-1440
Mon-Fri 9:00-5:00 EST (US)
or support@atomiusa.com