

Thank you for purchasing the atomi Qi Wireless Car Charger

The atomi Qi Wireless Car Charger combines a simple magnetic mount with the freedom of wireless charging. Through Qi Wireless technology, your smartphone has access to a convenient, hands-free charge. The secure magnetic hold allows your phone to have an easy transition from landscape to portrait mode.

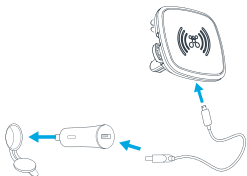
Package Contents

- (2) Qi Wireless Charge Pads
- (2) Qualcomm 3.0 USB Car Chargers
- (2) 3 Foot Micro-USB Cables
- (2) Mount Plates and User Guide

Charging Your Wireless Device

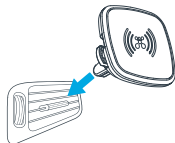
1

Connect the supplied micro-USB cable to the wireless charger's USB port and to the car charger's USB port. Insert the car charger into your vehicle's 12-volt power outlet.



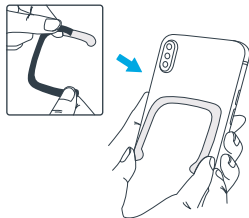
2

Slide the wireless charger's mounting fingers over one of your vehicle's vent louvers to attach. (The mounting fingers can be rotated to accommodate two different louver thicknesses.)



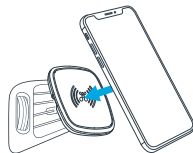
3

Remove the backing sticker from the magnetic plate and attach it to the back of your device or case.



4

Place your Qi compatible device against the vent mount. The vent mount will securely hold the device and automatically align it for a proper charge. Charging will begin on contact.



FCC Statement

This device complies with part 18 of the FCC Rules. Operation is Subject To the following two conditions:

(1) This device may not cause harmful interference, and (2) this device must accept any interference received, including interference that may cause undesired operation. Changes or modifications not explicitly approved by the party responsible for compliance could void the user's authority to operate this equipment.

Note: this equipment has been tested and found to comply with the limits for a Class B digital device, pursuant to part 15 and part 18 of the FCC Rules. These limits are designed to provide reasonable protection against harmful interference in a residential installation. This equipment generates, uses and can radiate radio frequency energy and, if not installed and used in accordance with the instructions, may cause harmful interference to radio communications. However, there is no guarantee that interference will not occur in a particular installation. If this equipment does cause harmful interference to radio or television reception, which can be determined by turning the equipment off and on, the user is encouraged to try to correct the interference by one or more of the following measures:

- Reorient or relocate the receiving antenna.
- Increase the separation between the equipment and receiver.
 - Connect the equipment into an outlet on a circuit different from that to which the receiver is connected.
- Consult the dealer or an experienced radio/TV technician for help.

The equipment complies with FCC radiation exposure limits set forth for an uncontrolled environment. During the operation of device a distance of 15 cm surrounding the device and 20 cm above the top surface of the device must be respected.

This device complies with Part 18 of the FCC Rules. This equipment generates uses and can radiate radio frequency energy and, if not installed and used in accordance with the instructions, may cause harmful interference to radio communications. If this equipment does cause harmful interference to radio or television reception, which can be determined by turning the equipment off and on, the user is encouraged to try to correct the interference by one or more of the following measures:

- Increase the separation between the equipment and any other radio device.
- Connect the equipment into an outlet on a circuit different from that to which the receiver is connected.