

85mm

85mm

85mm

Wireless Charging Power Bank

Includes wireless charging power bank and USB charging cord

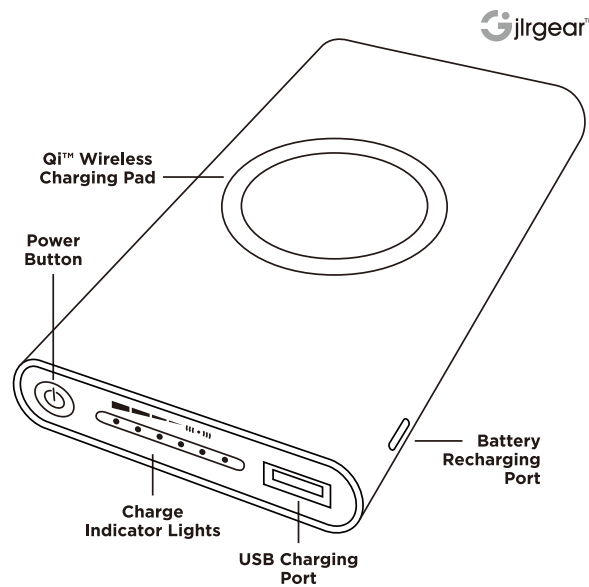
Product Instruction Manual

Please read carefully prior to use.

Recharges USB devices and compatible wireless Qi™ devices

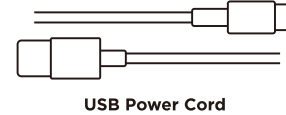


Please call customer service at **1-800-254-0111** with any questions



Specifications

Input: DC5V/2.1A
 USB Output: DC 5V/2.1A
 Wireless Output: 5V/1A
 Wireless Receiving: DC 5V/750mA

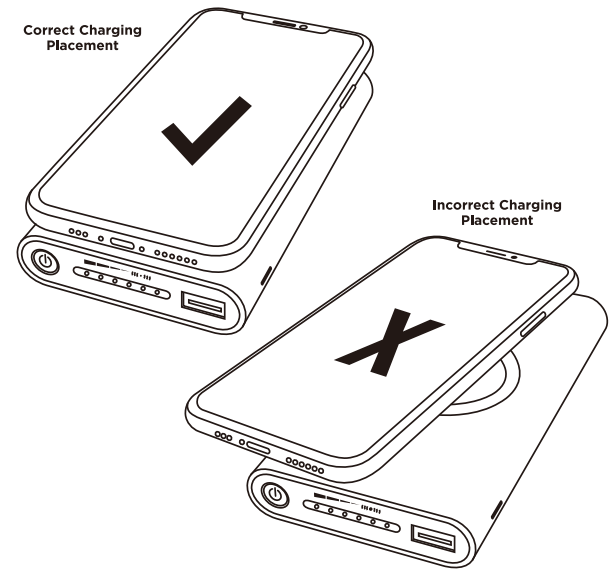


Care Tip: If the power bank/charger needs cleaning, wipe it using a soft dry cloth. Never use any abrasive cleaning agents. Periodically wipe off accumulated dust.

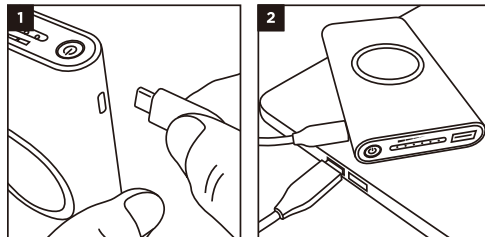
Features

- Quickly charges your smartphone anywhere, at home or on the go*
- Works with iPhone® XS/XR/XS Max/8/8+, Samsung® phones and other Qi™ devices
- 8000mAh power bank with battery indicator lights
- Built-in 2.1 amp USB power port recharges any wired USB compatible device

Correct Charging Placement



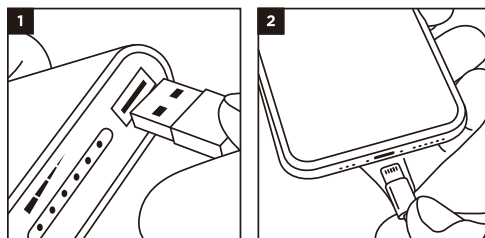
Always place your cell phone in the center of the charger for proper charging.



Charging the Power Bank/Charger

We recommended fully charging the battery upon purchase of your new charger/powerbank before first use.

1. Plug the included USB cable into the recharging port located on the upper right side of the power bank.
2. Plug the other end of the USB cable into your computer or any other USB power source.

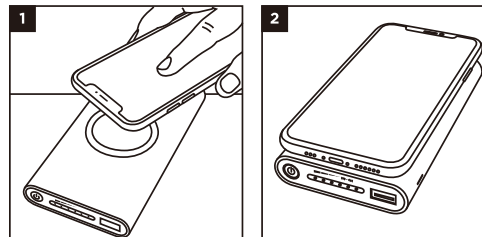


Using the USB Powerbank/Charger

1. Plug your device's USB cable into the power bank USB port.
2. Plug the other end of the USB cable into your smartphone or USB compatible device and allow the device to charge.

Qi™ Wireless Charging Instructions

For use with iPhone® XS/XR/XS Max/X/8/8+, Samsung® and other Qi™ compatible devices only.



Wireless Charging Instructions

1. Place the charger onto a flat stable surface.
2. Place your phone onto charger to charge. For best possible charge results, always try to make sure your phone is placed in the directly in the center.**

Charging Your Device

- Charging time will depend on the type of device. Your device will display the charging progress on screen
- The LED indicator will turn from red to green when charging. Remove the device from the charging pad when complete
- If your phone has a protective metal case, remove it before charging
- Charging problems may occur when used with some protective cases**
- The LED indicator lights on the power bank will show current battery levels

Operation Notes

- Wireless charging is for Qi™ approved wireless charging devices only
- This product can be used anywhere in your home, office or while traveling with any compatible USB power source
- The LED light will illuminate green while the phone is charging and turn red when charging is complete (wireless charging pad only)
- It is normal for the charger to feel warm while or after charging your device
- Always place your cell phone in the center of the charger for proper charging

WARNING! IMPORTANT CARE AND SAFEGUARDS

Failure to follow the safety instructions can lead to fire, electrical shock, personal injury or property damage and damage to this product.

- Do not use the power bank/charging pad for anything other than its intended use
- Never try to charge any other batteries or devices with this product other than what is specified in this manual
- If you have an electrical device, such as a pacemaker, consult a physician before using this product
- Do not place magnetic cards or similar items near this product
- Always use the specified power source and voltage
- Do not use a voltage converter/travel adapter
- Always place the charging pad on a sturdy and flat surface during charging
- This product contains small parts and is not suitable for children
- Do not expose this product to rain, water or excessive humidity
- If the power bank becomes wet, immediately unplug it from the power source
- Keep the power bank away from heat sources and direct sunlight
- Always use this product in operating temperatures of 32°F (0°C) 95°F (35°C)
- Do not handle the power bank, USB power cord, or power source with wet hands
- Do not let dust or other things accumulate on product and power cord
- Do not use the power bank if it has been dropped or damaged in any way
- Never take this device apart and always get repaired by a qualified technician
- Always unplug the charging pad when not in use for a long period of time
- Do not use charging pad with metal protective phone cases

* Must have Qi enabled charging. Check with your phone manufacturer for compatibility.
 ** Some additional non-metal protective cases may also interfere with proper charging.

FCC Disclaimer:

This device complies with part 15 of the FCC Rules. Operation is subject to the following two conditions: (1) This device may not cause harmful interference, and (2) this device must accept any interference received, including interference that may cause undesired operation. NOTE: THE MANUFACTURER IS NOT RESPONSIBLE FOR ANY RADIO OR TV INTERFERENCE CAUSED BY UNAUTHORIZED MODIFICATIONS TO THIS EQUIPMENT. SUCH MODIFICATIONS COULD VOID THE USER AUTHORITY TO OPERATE THE EQUIPMENT.

iPhone is a registered trademark of Apple Inc., registered in the U.S. and other countries. Samsung is a registered trademark of Samsung Electronics Co., Ltd. The 'Qi' symbol is a trademark of the Wireless Power Consortium.

SAVE THESE INSTRUCTIONS FOR FUTURE REFERENCE

Any questions, please call customer service at 1-800-254-0111
 8:30am - 5pm, PST, Monday - Friday, or email us at customerservice@jlrgear.com

2612 Barrington Court, Hayward, CA 94545
 © 2019 JLR Gear - Made in China



FCC Warning

This device complies with Part 18 of the FCC Rules.

Operation is Subject to the following two conditions: (1) This device may not cause harmful interference, and (2) this device must accept any interference received, including interference that may cause undesired operation.

Changes or modifications not explicitly approved by the party responsible for compliance could void the user's authority to operate this equipment.

Note: this equipment has been tested and found to comply with the limits for a Class B digital device, pursuant to part 18 of the FCC Rules. These limits are designed to provide reasonable protection against harmful interference in a residential installation.

This equipment generates uses and can radiate radio frequency energy and, if not installed and used in accordance with the instructions, may cause harmful interference to radio communications. However, there is no guarantee that interference will not occur in a particular installation. If this equipment does cause harmful interference to radio or television reception, which can be determined by turning the equipment off and on, the user is encouraged to try to correct the interference by one or more of the following measures:

- Reorient or relocate the receiving antenna.
- Increase the separation between the equipment and receiver.
- Connect the equipment into an outlet on a circuit different from that to which the receiver is connected.
- Consult the dealer or an experienced radio/TV technician for help.

The equipment complies with FCC radiation exposure limits set forth for an uncontrolled environment. During the operation of device a distance of 15 cm surrounding the device and 20 cm above the top surface of the device must be respected.