

#01_LTE Band 7_20M_QPSK_1_0_Left Cheek_Ch20850+21048

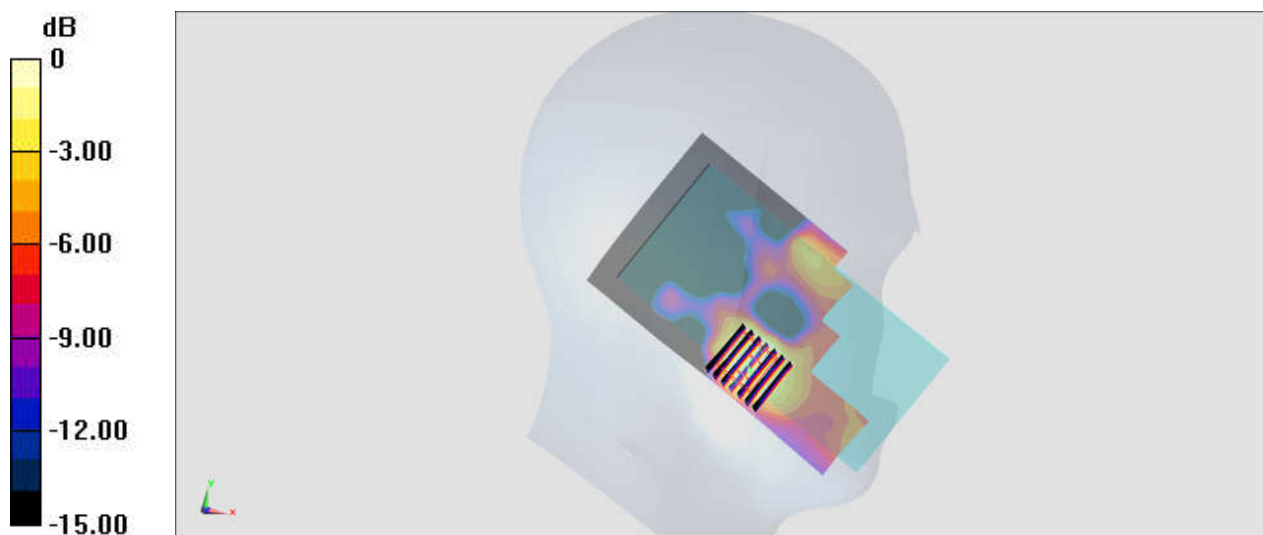
Communication System: LTE; Frequency: 2510 MHz; Duty Cycle: 1:1
 Medium: HSL_2600_181109 Medium parameters used: $f = 2510$ MHz; $\sigma = 1.819$ S/m; $\epsilon_r = 38.253$;
 $\rho = 1000$ kg/m³
 Ambient Temperature : 23.3 °C ; Liquid Temperature : 22.3 °C

DASY5 Configuration:

- Probe: ES3DV3 - SN3169; ConvF(4.5, 4.5, 4.5) @ 2510 MHz; Calibrated: 2018/5/28
- Sensor-Surface: 3mm (Mechanical Surface Detection)
- Electronics: DAE3 Sn495; Calibrated: 2018/5/24
- Phantom: SAM_Left; Type: QD000P40CD; Serial: TP:1431
- Measurement SW: DASY52, Version 52.10 (1); SEMCAD X Version 14.6.11 (7439)

Area Scan (81x151x1): Interpolated grid: dx=1.200 mm, dy=1.200 mm
 Maximum value of SAR (interpolated) = 0.0584 W/kg

Zoom Scan (7x7x7)/Cube 0: Measurement grid: dx=5mm, dy=5mm, dz=5mm
 Reference Value = 3.355 V/m; Power Drift = 0.12 dB
 Peak SAR (extrapolated) = 0.0750 W/kg
SAR(1 g) = 0.041 W/kg; SAR(10 g) = 0.021 W/kg
 Maximum value of SAR (measured) = 0.0523 W/kg



0 dB = 0.0523 W/kg = -12.81 dBW/kg

#02_LTE Band 41_20M_QPSK_1_0_Left Cheek_Ch39750+39948

Communication System: LTE; Frequency: 2506 MHz; Duty Cycle: 1:1.59

Medium: HSL_2600_181109 Medium parameters used: $f = 2506$ MHz; $\sigma = 1.815$ S/m; $\epsilon_r = 38.27$; $\rho = 1000$ kg/m³

Ambient Temperature : 23.3 °C; Liquid Temperature : 22.3 °C

DASY5 Configuration:

- Probe: ES3DV3 - SN3169; ConvF(4.5, 4.5, 4.5) @ 2506 MHz; Calibrated: 2018/5/28
- Sensor-Surface: 3mm (Mechanical Surface Detection)
- Electronics: DAE3 Sn495; Calibrated: 2018/5/24
- Phantom: SAM_Left; Type: QD000P40CD; Serial: TP:1431
- Measurement SW: DASY52, Version 52.10 (1); SEMCAD X Version 14.6.11 (7439)

Area Scan (81x151x1): Interpolated grid: dx=1.200 mm, dy=1.200 mm

Maximum value of SAR (interpolated) = 0.101 W/kg

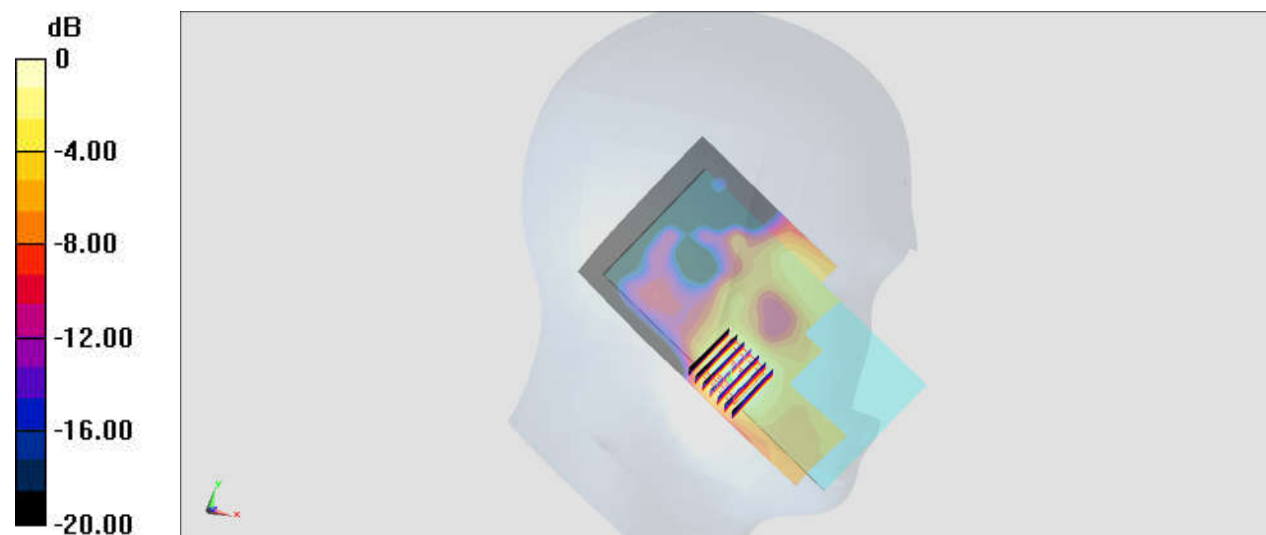
Zoom Scan (7x7x7)/Cube 0: Measurement grid: dx=5mm, dy=5mm, dz=5mm

Reference Value = 5.975 V/m; Power Drift = 0.16 dB

Peak SAR (extrapolated) = 0.137 W/kg

SAR(1 g) = 0.072 W/kg; SAR(10 g) = 0.037 W/kg

Maximum value of SAR (measured) = 0.0908 W/kg



0 dB = 0.0908 W/kg = -10.42 dBW/kg

#03_LTE Band 7_20M_QPSK_1_0_Bottom Side_10mm_Ch20850+21048

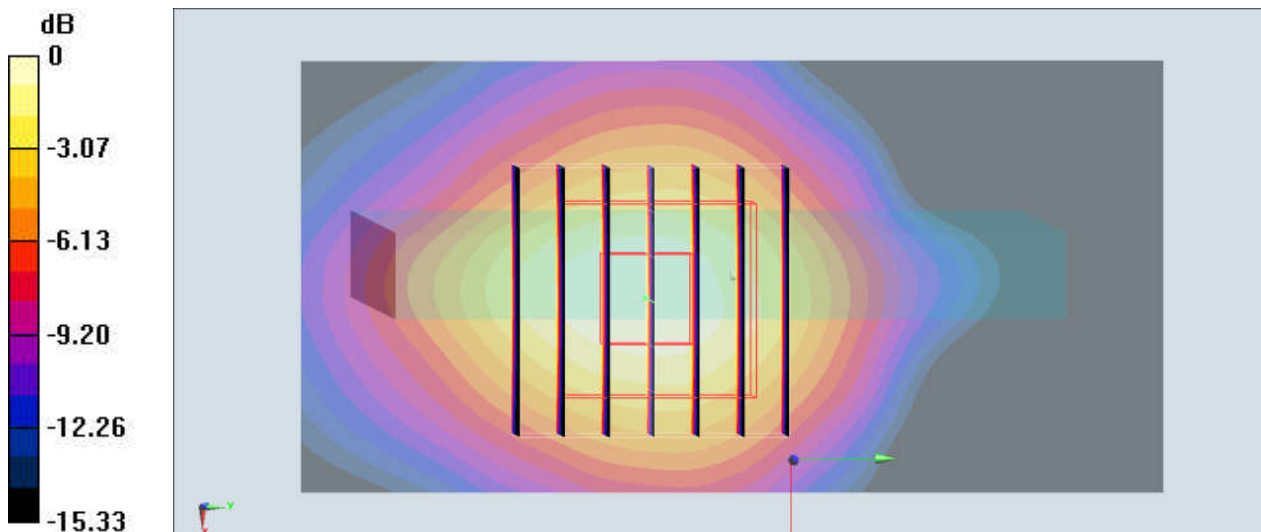
Communication System: LTE ; Frequency: 2510 MHz;Duty Cycle: 1:1
Medium: MSL_2600_181113 Medium parameters used: $f = 2510$ MHz; $\sigma = 2.021$ S/m; $\epsilon_r = 51.886$;
 $\rho = 1000$ kg/m³
Ambient Temperature : 23.3 °C ; Liquid Temperature : 22.3 °C

DASY5 Configuration:

- Probe: ES3DV3 - SN3169; ConvF(4.27, 4.27, 4.27) @ 2510 MHz; Calibrated: 2018/5/28
- Sensor-Surface: 3mm (Mechanical Surface Detection)
- Electronics: DAE3 Sn495; Calibrated: 2018/5/24
- Phantom: SAM_Left; Type: QD000P40CD; Serial: TP:1431
- Measurement SW: DASY52, Version 52.10 (1);SEMCAD X Version 14.6.11 (7439)

Area Scan (41x81x1): Interpolated grid: dx=1.200 mm, dy=1.200 mm
Maximum value of SAR (interpolated) = 0.807 W/kg

Zoom Scan (7x7x7)/Cube 0: Measurement grid: dx=5mm, dy=5mm, dz=5mm
Reference Value = 20.01 V/m; Power Drift = -0.14 dB
Peak SAR (extrapolated) = 1.36 W/kg
SAR(1 g) = 0.621 W/kg; SAR(10 g) = 0.301 W/kg
Maximum value of SAR (measured) = 0.807 W/kg



0 dB = 0.807 W/kg = -0.93 dBW/kg

#04_LTE Band 41_20M_QPSK_1_0_Bottom Side_10mm_Ch39750+39948

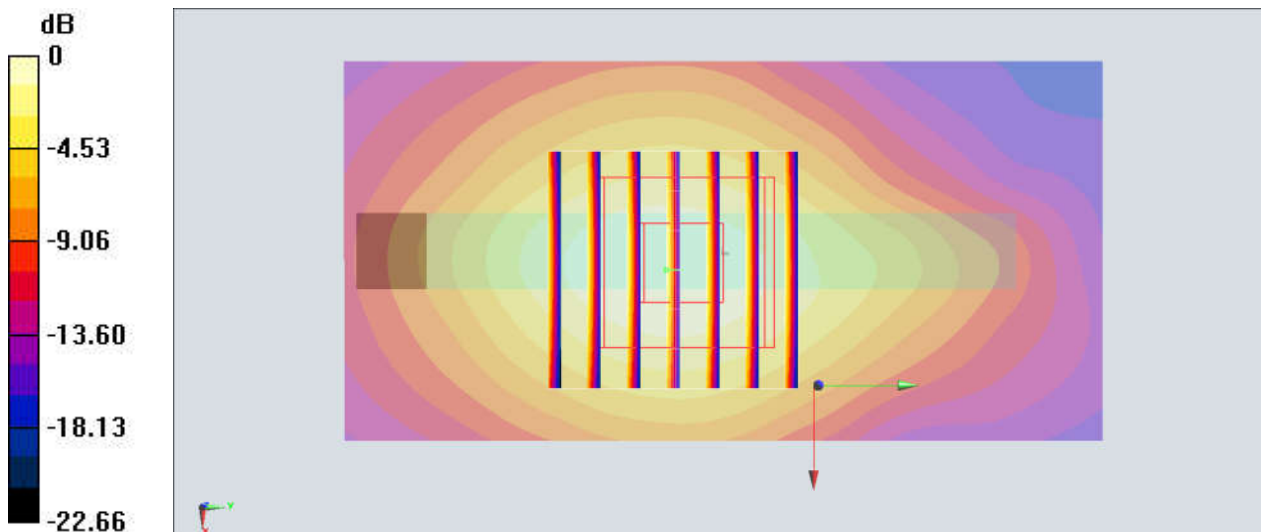
Communication System: LTE ; Frequency: 2506 MHz;Duty Cycle: 1:1.59
Medium: MSL_2600_181113 Medium parameters used: $f = 2506$ MHz; $\sigma = 2.013$ S/m; $\epsilon_r = 51.903$;
 $\rho = 1000$ kg/m³
Ambient Temperature : 23.3 °C ; Liquid Temperature : 22.3 °C

DASY5 Configuration:

- Probe: ES3DV3 - SN3169; ConvF(4.27, 4.27, 4.27) @ 2506 MHz; Calibrated: 2018/5/28
- Sensor-Surface: 3mm (Mechanical Surface Detection)
- Electronics: DAE3 Sn495; Calibrated: 2018/5/24
- Phantom: SAM_Left; Type: QD000P40CD; Serial: TP:1431
- Measurement SW: DASY52, Version 52.10 (1);SEMCAD X Version 14.6.11 (7439)

Area Scan (41x81x1): Interpolated grid: dx=1.200 mm, dy=1.200 mm
Maximum value of SAR (interpolated) = 0.991 W/kg

Zoom Scan (7x7x7)/Cube 0: Measurement grid: dx=5mm, dy=5mm, dz=5mm
Reference Value = 21.93 V/m; Power Drift = -0.05 dB
Peak SAR (extrapolated) = 1.62 W/kg
SAR(1 g) = 0.778 W/kg; SAR(10 g) = 0.390 W/kg
Maximum value of SAR (measured) = 0.984 W/kg



0 dB = 0.984 W/kg = -0.07 dBW/kg

#05_LTE Band 7_20M_QPSK_1_0_Back_15mm_Ch20850+21048

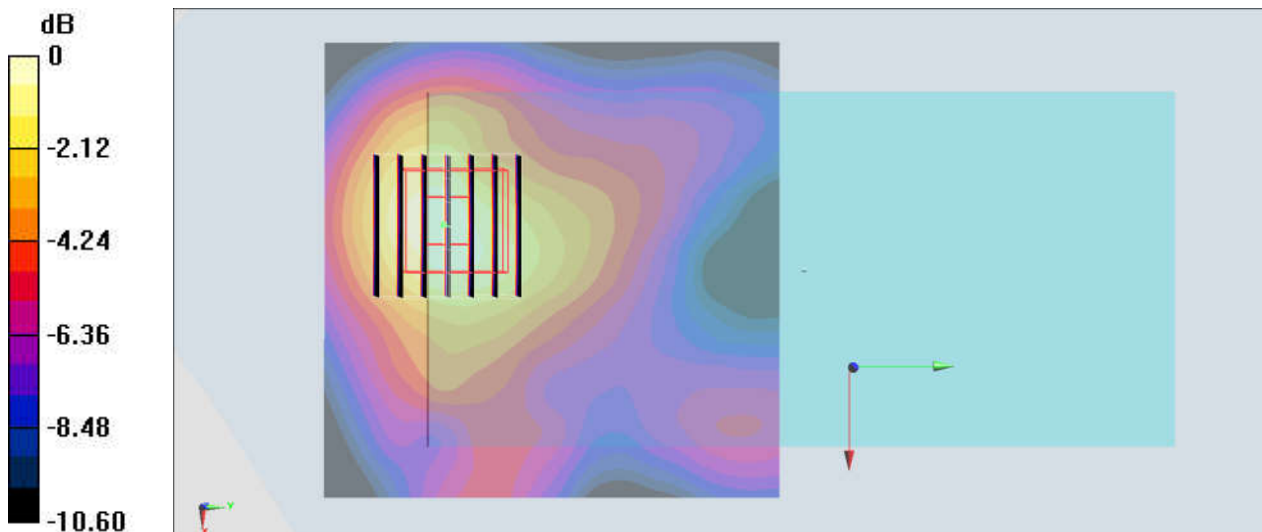
Communication System: LTE; Frequency: 2510 MHz; Duty Cycle: 1:1
Medium: MSL_2600_181113 Medium parameters used: $f = 2510$ MHz; $\sigma = 2.021$ S/m; $\epsilon_r = 51.886$;
 $\rho = 1000$ kg/m³
Ambient Temperature : 23.3 °C ; Liquid Temperature : 22.3 °C

DASY5 Configuration:

- Probe: ES3DV3 - SN3169; ConvF(4.27, 4.27, 4.27) @ 2510 MHz; Calibrated: 2018/5/28
- Sensor-Surface: 3mm (Mechanical Surface Detection)
- Electronics: DAE3 Sn495; Calibrated: 2018/5/24
- Phantom: SAM_Left; Type: QD000P40CD; Serial: TP:1431
- Measurement SW: DASY52, Version 52.10 (1); SEMCAD X Version 14.6.11 (7439)

Area Scan (81x81x1): Interpolated grid: dx=1.200 mm, dy=1.200 mm
Maximum value of SAR (interpolated) = 0.211 W/kg

Zoom Scan (7x7x7)/Cube 0: Measurement grid: dx=5mm, dy=5mm, dz=5mm
Reference Value = 9.759 V/m; Power Drift = -0.05 dB
Peak SAR (extrapolated) = 0.346 W/kg
SAR(1 g) = 0.158 W/kg; SAR(10 g) = 0.082 W/kg
Maximum value of SAR (measured) = 0.213 W/kg



0 dB = 0.213 W/kg = -6.72 dBW/kg

#06_LTE Band 41_20M_QPSK_1_0_Front_15mm_Ch39750+39948

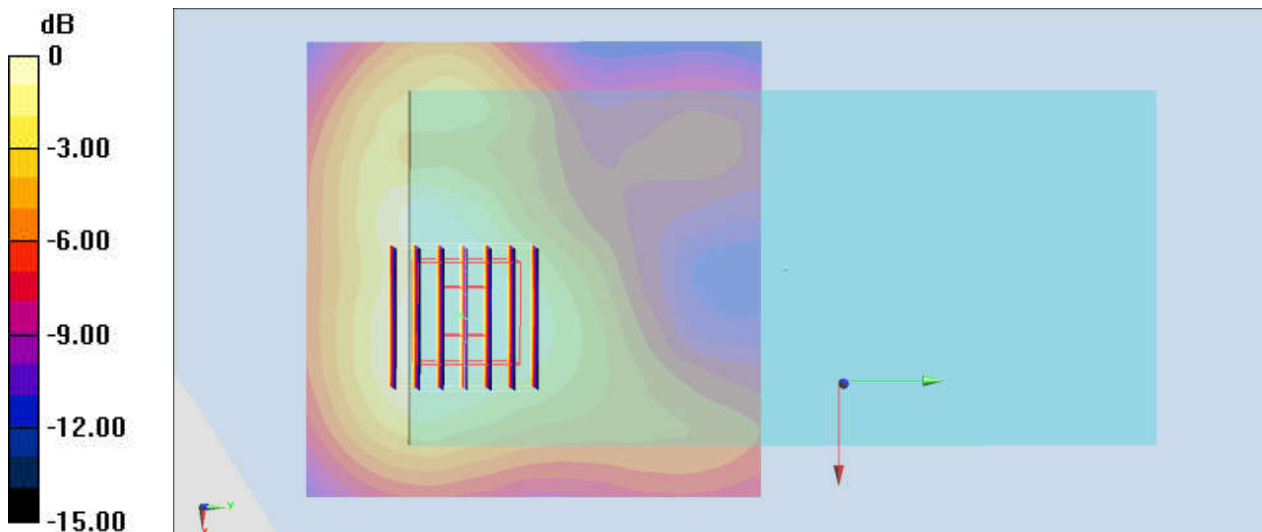
Communication System: LTE ; Frequency: 2506 MHz;Duty Cycle: 1:1.59
Medium: MSL_2600_181113 Medium parameters used: $f = 2506$ MHz; $\sigma = 2.013$ S/m; $\epsilon_r = 51.903$;
 $\rho = 1000$ kg/m³
Ambient Temperature : 23.3 °C ; Liquid Temperature : 22.3 °C

DASY5 Configuration:

- Probe: ES3DV3 - SN3169; ConvF(4.27, 4.27, 4.27) @ 2506 MHz; Calibrated: 2018/5/28
- Sensor-Surface: 3mm (Mechanical Surface Detection)
- Electronics: DAE3 Sn495; Calibrated: 2018/5/24
- Phantom: SAM_Left; Type: QD000P40CD; Serial: TP:1431
- Measurement SW: DASY52, Version 52.10 (1);SEMCAD X Version 14.6.11 (7439)

Area Scan (81x81x1): Interpolated grid: dx=1.200 mm, dy=1.200 mm
Maximum value of SAR (interpolated) = 0.238 W/kg

Zoom Scan (7x7x7)/Cube 0: Measurement grid: dx=5mm, dy=5mm, dz=5mm
Reference Value = 10.78 V/m; Power Drift = -0.04 dB
Peak SAR (extrapolated) = 0.359 W/kg
SAR(1 g) = 0.177 W/kg; SAR(10 g) = 0.102 W/kg
Maximum value of SAR (measured) = 0.233 W/kg



0 dB = 0.233 W/kg = -6.33 dBW/kg