

#41_Bluetooth_1Mbps_Right Side_10mm_Ch39;Chain 0

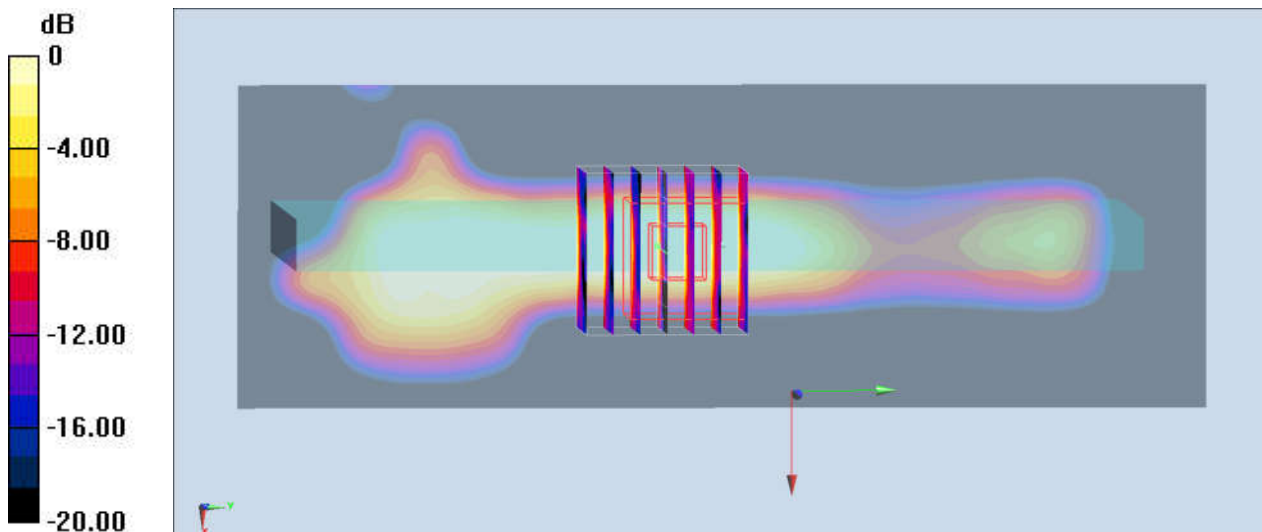
Communication System: Bluetooth; Frequency: 2441 MHz; Duty Cycle: 1:1.297
Medium: MSL_2600_181113 Medium parameters used: $f = 2441$ MHz; $\sigma = 1.939$ S/m; $\epsilon_r = 52.132$;
 $\rho = 1000$ kg/m³
Ambient Temperature : 23.3 °C ; Liquid Temperature : 22.3 °C

DASY5 Configuration:

- Probe: ES3DV3 - SN3169; ConvF(4.4, 4.4, 4.4) ; Calibrated: 2018/5/28
- Sensor-Surface: 3mm (Mechanical Surface Detection)
- Electronics: DAE3 Sn495; Calibrated: 2018/5/24
- Phantom: SAM_Left; Type: QD000P40CD; Serial: TP:1431
- Measurement SW: DASY52, Version 52.10 (1); SEMCAD X Version 14.6.11 (7439)

Area Scan (51x151x1): Interpolated grid: dx=1.200 mm, dy=1.200 mm
Maximum value of SAR (interpolated) = 0.0495 W/kg

Zoom Scan (7x7x7)/Cube 0: Measurement grid: dx=5mm, dy=5mm, dz=5mm
Reference Value = 3.037 V/m; Power Drift = -0.16 dB
Peak SAR (extrapolated) = 0.0680 W/kg
SAR(1 g) = 0.024 W/kg; SAR(10 g) = 0.00485 W/kg
Maximum value of SAR (measured) = 0.0188 W/kg



0 dB = 0.0188 W/kg = -17.26 dBW/kg

#42_GSM850_GPRS (3 Tx slots)_Back_15mm_Ch251

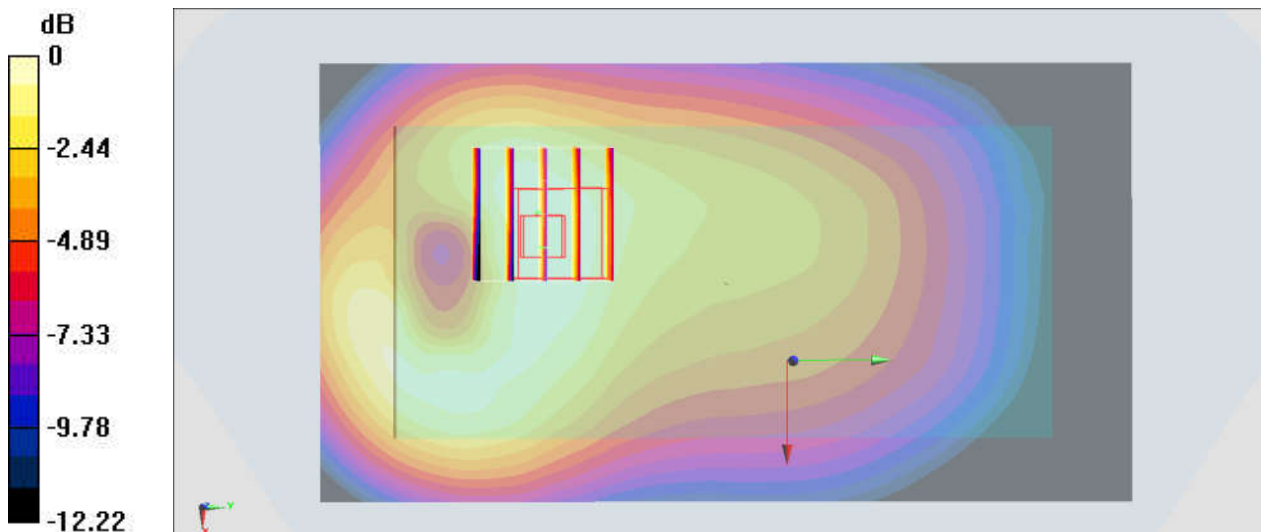
Communication System: GSM850 ; Frequency: 848.8 MHz;Duty Cycle: 1:2.77
Medium: MSL_850_181108 Medium parameters used: $f = 849$ MHz; $\sigma = 1.018$ S/m; $\epsilon_r = 56.029$; $\rho = 1000$ kg/m³
Ambient Temperature : 23.5 °C ; Liquid Temperature : 22.5 °C

DASY5 Configuration:

- Probe: ES3DV3 - SN3169; ConvF(6.19, 6.19, 6.19) ; Calibrated: 2018/5/28
- Sensor-Surface: 3mm (Mechanical Surface Detection)
- Electronics: DAE3 Sn495; Calibrated: 2018/5/24
- Phantom: SAM_Left; Type: QD000P40CD; Serial: TP:1431
- Measurement SW: DASY52, Version 52.10 (1);SEMCAD X Version 14.6.11 (7439)

Area Scan (71x131x1): Interpolated grid: $dx=1.500$ mm, $dy=1.500$ mm
Maximum value of SAR (interpolated) = 0.113 W/kg

Zoom Scan (5x5x7)/Cube 0: Measurement grid: $dx=8$ mm, $dy=8$ mm, $dz=5$ mm
Reference Value = 8.780 V/m; Power Drift = -0.06 dB
Peak SAR (extrapolated) = 0.135 W/kg
SAR(1 g) = 0.100 W/kg; SAR(10 g) = 0.072 W/kg
Maximum value of SAR (measured) = 0.113 W/kg



0 dB = 0.113 W/kg = -9.47 dBW/kg

#43_GSM1900_GPRS (4 Tx slots)_Front_15mm_Ch512

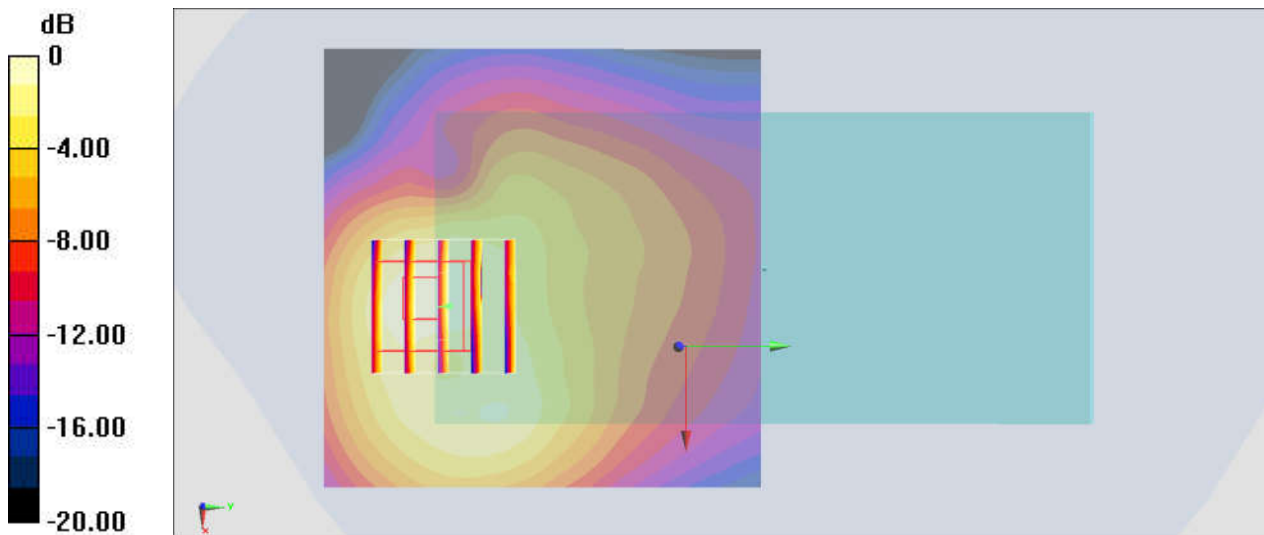
Communication System: PCS; Frequency: 1850.2 MHz; Duty Cycle: 1:2.08
Medium: MSL_1900_181107 Medium parameters used : $f = 1850.2$ MHz; $\sigma = 1.489$ S/m; $\epsilon_r = 54.222$; $\rho = 1000$ kg/m³
Ambient Temperature : 23.3 °C; Liquid Temperature : 22.3 °C

DASY5 Configuration:

- Probe: ES3DV3 - SN3169; ConvF(4.8, 4.8, 4.8) ; Calibrated: 2018/5/28
- Sensor-Surface: 3mm (Mechanical Surface Detection)
- Electronics: DAE3 Sn495; Calibrated: 2018/5/24
- Phantom: SAM_Left; Type: QD000P40CD; Serial: TP:1431
- Measurement SW: DASY52, Version 52.10 (1); SEMCAD X Version 14.6.11 (7439)

Area Scan (71x71x1): Interpolated grid: dx=1.500 mm, dy=1.500 mm
Maximum value of SAR (interpolated) = 0.273 W/kg

Zoom Scan (5x5x7)/Cube 0: Measurement grid: dx=8mm, dy=8mm, dz=5mm
Reference Value = 11.76 V/m; Power Drift = 0.17 dB
Peak SAR (extrapolated) = 0.387 W/kg
SAR(1 g) = 0.246 W/kg; SAR(10 g) = 0.134 W/kg
Maximum value of SAR (measured) = 0.275 W/kg



#44_WCDMA II_RMC 12.2Kbps_Front_15mm_Ch9262

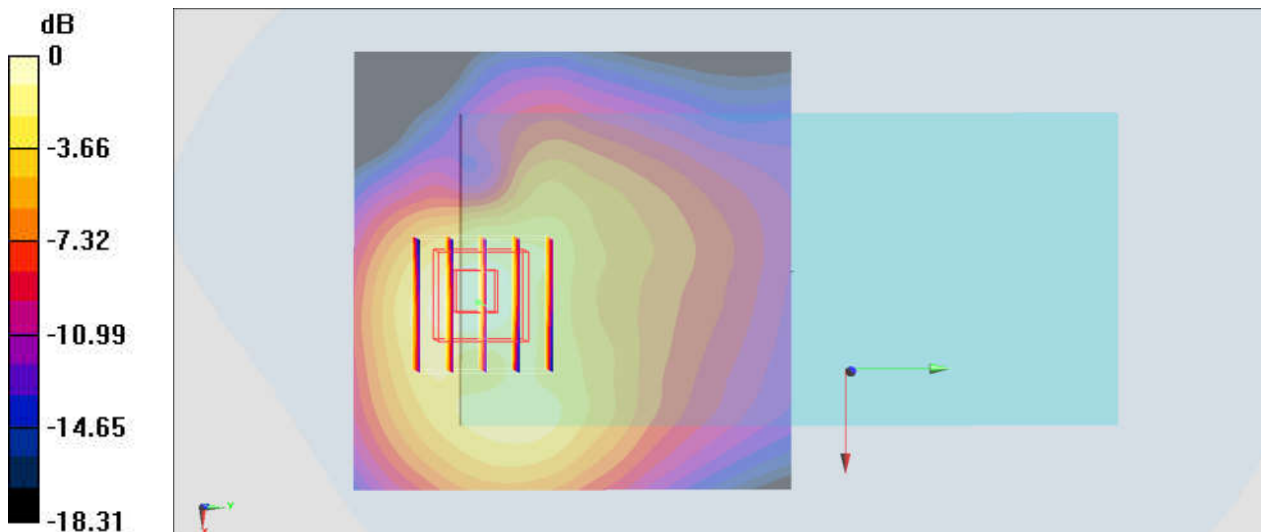
Communication System: WCDMA; Frequency: 1852.4 MHz; Duty Cycle: 1:1
Medium: MSL_1900_181107 Medium parameters used: $f = 1852.4$ MHz; $\sigma = 1.492$ S/m; $\epsilon_r = 54.215$; $\rho = 1000$ kg/m³
Ambient Temperature : 23.3 °C ; Liquid Temperature : 22.3 °C

DASY5 Configuration:

- Probe: ES3DV3 - SN3169; ConvF(4.8, 4.8, 4.8) ; Calibrated: 2018/5/28
- Sensor-Surface: 3mm (Mechanical Surface Detection)
- Electronics: DAE3 Sn495; Calibrated: 2018/5/24
- Phantom: SAM_Left; Type: QD000P40CD; Serial: TP:1431
- Measurement SW: DASY52, Version 52.10 (1); SEMCAD X Version 14.6.11 (7439)

Area Scan (71x71x1): Interpolated grid: dx=1.500 mm, dy=1.500 mm
Maximum value of SAR (interpolated) = 0.278 W/kg

Zoom Scan (5x5x7)/Cube 0: Measurement grid: dx=8mm, dy=8mm, dz=5mm
Reference Value = 12.65 V/m; Power Drift = 0.12 dB
Peak SAR (extrapolated) = 0.383 W/kg
SAR(1 g) = 0.240 W/kg; SAR(10 g) = 0.139 W/kg
Maximum value of SAR (measured) = 0.280 W/kg



0 dB = 0.280 W/kg = -5.53 dBW/kg

#45_WCDMA IV_RMC 12.2Kbps_Back_15mm_Ch1312

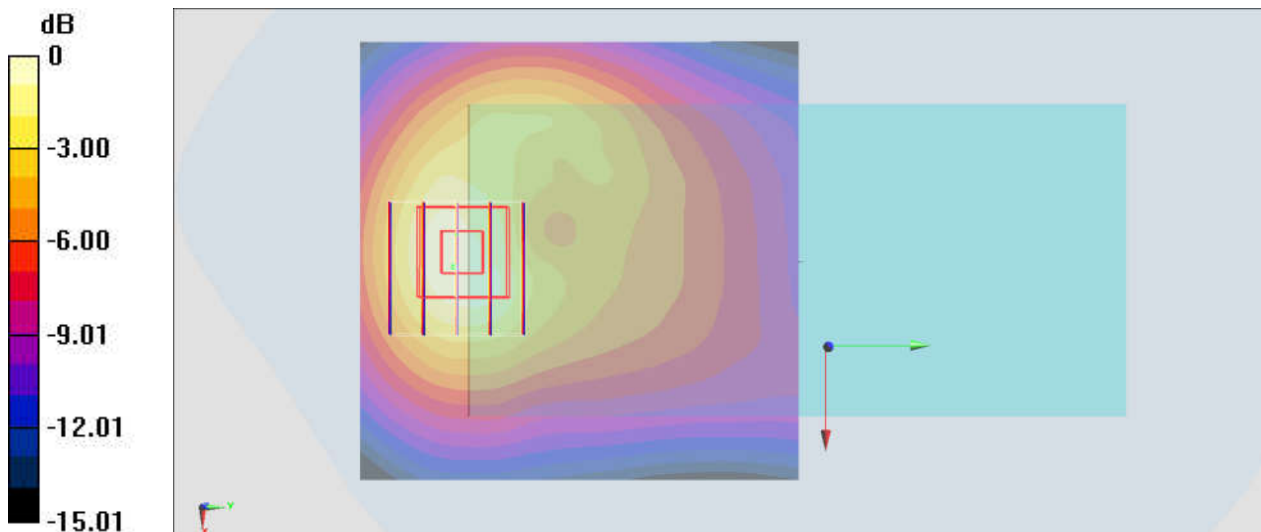
Communication System: WCDMA ; Frequency: 1712.4 MHz;Duty Cycle: 1:1
Medium: MSL_1750_181106 Medium parameters used: $f = 1712.4$ MHz; $\sigma = 1.456$ S/m; $\epsilon_r = 52.867$; $\rho = 1000$ kg/m³
Ambient Temperature : 23.2 °C ; Liquid Temperature : 22.2 °C

DASY5 Configuration:

- Probe: ES3DV3 - SN3169; ConvF(5.06, 5.06, 5.06) ; Calibrated: 2018/5/28
- Sensor-Surface: 3mm (Mechanical Surface Detection)
- Electronics: DAE3 Sn495; Calibrated: 2018/5/24
- Phantom: SAM_Left; Type: QD000P40CD; Serial: TP:1431
- Measurement SW: DASY52, Version 52.10 (1);SEMCAD X Version 14.6.11 (7439)

Area Scan (71x71x1): Interpolated grid: dx=1.500 mm, dy=1.500 mm
Maximum value of SAR (interpolated) = 0.319 W/kg

Zoom Scan (5x5x7)/Cube 0: Measurement grid: dx=8mm, dy=8mm, dz=5mm
Reference Value = 13.44 V/m; Power Drift = 0.03 dB
Peak SAR (extrapolated) = 0.438 W/kg
SAR(1 g) = 0.287 W/kg; SAR(10 g) = 0.175 W/kg
Maximum value of SAR (measured) = 0.333 W/kg



0 dB = 0.333 W/kg = -4.78 dBW/kg

#46_WCDMA V_RMC 12.2Kbps_Back_15mm_Ch4182

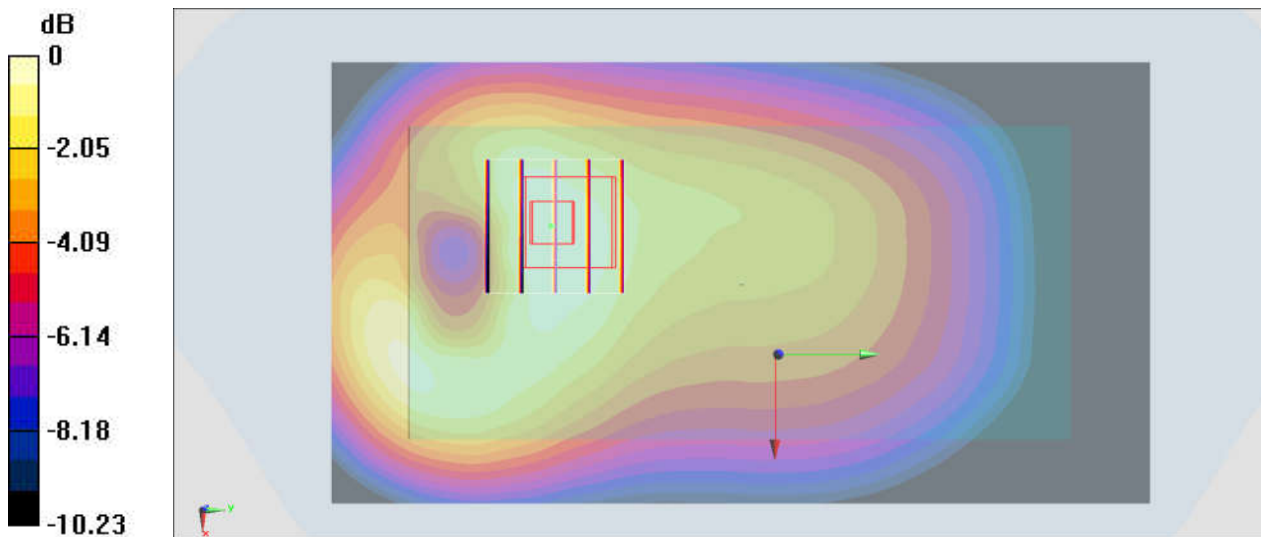
Communication System: WCDMA ; Frequency: 836.4 MHz;Duty Cycle: 1:1
Medium: MSL_850_181019 Medium parameters used: $f = 836.4$ MHz; $\sigma = 1.006$ S/m; $\epsilon_r = 55.339$;
 $\rho = 1000$ kg/m³
Ambient Temperature : 23.5 °C ; Liquid Temperature : 22.5 °C

DASY5 Configuration:

- Probe: ES3DV3 - SN3169; ConvF(6.19, 6.19, 6.19) ; Calibrated: 2018/5/28
- Sensor-Surface: 3mm (Mechanical Surface Detection)
- Electronics: DAE3 Sn495; Calibrated: 2018/5/24
- Phantom: SAM-Right; Type: SAM; Serial: TP-1503
- Measurement SW: DASY52, Version 52.10 (1);SEMCAD X Version 14.6.11 (7439)

Area Scan (71x131x1): Interpolated grid: dx=1.500 mm, dy=1.500 mm
Maximum value of SAR (interpolated) = 0.255 W/kg

Zoom Scan (5x5x7)/Cube 0: Measurement grid: dx=8mm, dy=8mm, dz=5mm
Reference Value = 13.20 V/m; Power Drift = -0.05 dB
Peak SAR (extrapolated) = 0.294 W/kg
SAR(1 g) = 0.224 W/kg; SAR(10 g) = 0.162 W/kg
Maximum value of SAR (measured) = 0.250 W/kg



0 dB = 0.250 W/kg = -6.02 dBW/kg

#47_CDMA BC0_1xRTT RC3 SO32_Back_15mm_Ch777

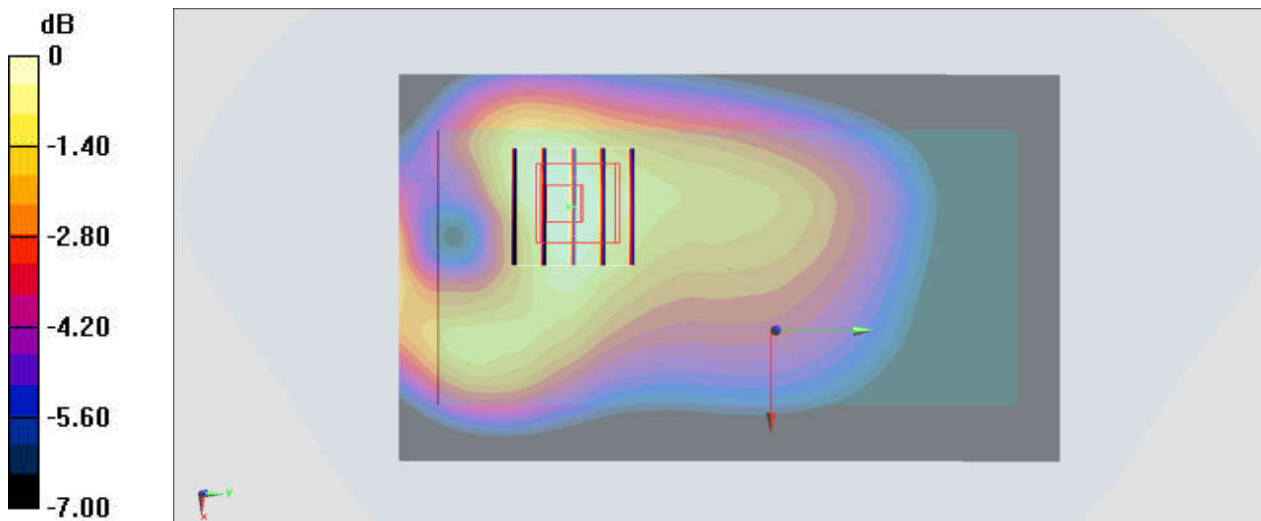
Communication System: CDMA; Frequency: 848.31 MHz; Duty Cycle: 1:1
Medium: MSL_850_181019 Medium parameters used : $f = 848.31$ MHz; $\sigma = 0.983$ S/m; $\epsilon_r = 55.259$; $\rho = 1000$ kg/m³
Ambient Temperature : 23.5 °C ; Liquid Temperature : 22.5 °C

DASY5 Configuration:

- Probe: ES3DV3 - SN3169; ConvF(6.19, 6.19, 6.19) ; Calibrated: 2018/5/28
- Sensor-Surface: 3mm (Mechanical Surface Detection)
- Electronics: DAE3 Sn495; Calibrated: 2018/5/24
- Phantom: SAM-Right; Type: SAM; Serial: TP-1503
- Measurement SW: DASY52, Version 52.10 (1); SEMCAD X Version 14.6.11 (7439)

Area Scan (71x121x1): Interpolated grid: dx=1.500 mm, dy=1.500 mm
Maximum value of SAR (interpolated) = 0.333 W/kg

Zoom Scan (5x5x7)/Cube 0: Measurement grid: dx=8mm, dy=8mm, dz=5mm
Reference Value = 17.44 V/m; Power Drift = 0.02 dB
Peak SAR (extrapolated) = 0.387 W/kg
SAR(1 g) = 0.296 W/kg; SAR(10 g) = 0.216 W/kg
Maximum value of SAR (measured) = 0.328 W/kg



0 dB = 0.328 W/kg = -4.84 dBW/kg

#48_CDMA BC1_1xRTT RC3 SO32_Front_15mm_Ch25

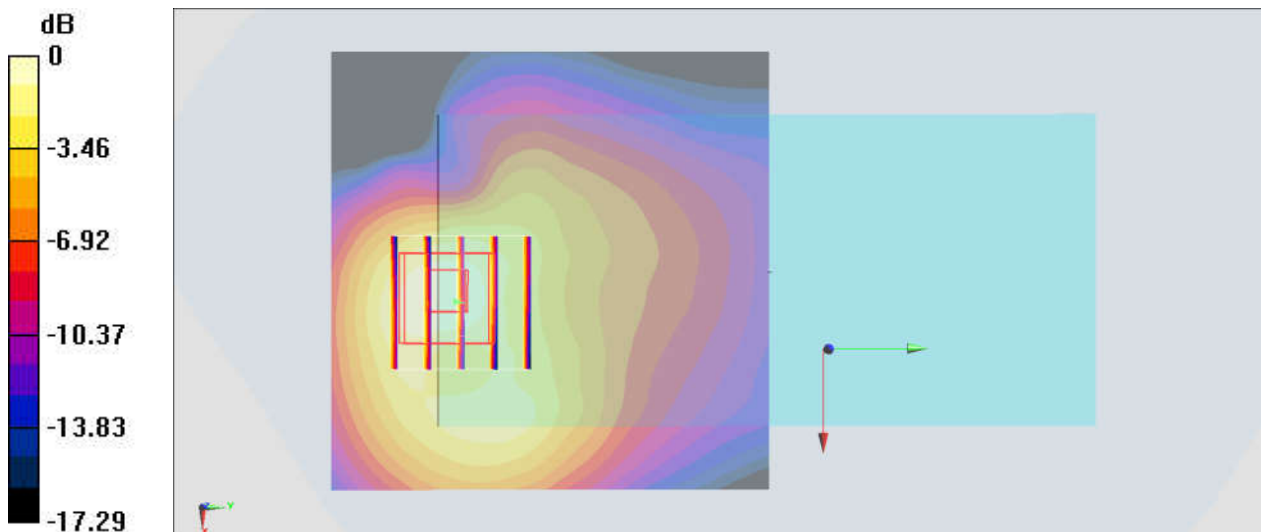
Communication System: CDMA ; Frequency: 1851.25 MHz;Duty Cycle: 1:1
Medium: MSL_1900_181107 Medium parameters used : $f = 1851.25$ MHz; $\sigma = 1.49$ S/m; $\epsilon_r = 54.219$; $\rho = 1000$ kg/m³
Ambient Temperature : 23.3 °C ; Liquid Temperature : 22.3 °C

DASY5 Configuration:

- Probe: ES3DV3 - SN3169; ConvF(4.8, 4.8, 4.8) ; Calibrated: 2018/5/28
- Sensor-Surface: 3mm (Mechanical Surface Detection)
- Electronics: DAE3 Sn495; Calibrated: 2018/5/24
- Phantom: SAM_Left; Type: QD000P40CD; Serial: TP:1431
- Measurement SW: DASY52, Version 52.10 (1);SEMCAD X Version 14.6.11 (7439)

Area Scan (71x71x1): Interpolated grid: dx=1.500 mm, dy=1.500 mm
Maximum value of SAR (interpolated) = 0.240 W/kg

Zoom Scan (5x5x7)/Cube 0: Measurement grid: dx=8mm, dy=8mm, dz=5mm
Reference Value = 11.50 V/m; Power Drift = 0.14 dB
Peak SAR (extrapolated) = 0.345 W/kg
SAR(1 g) = 0.214 W/kg; SAR(10 g) = 0.123 W/kg
Maximum value of SAR (measured) = 0.246 W/kg



0 dB = 0.246 W/kg = -6.09 dBW/kg

#49_CDMA BC10_1xRTT RC3 SO32_Back_15mm_Ch580

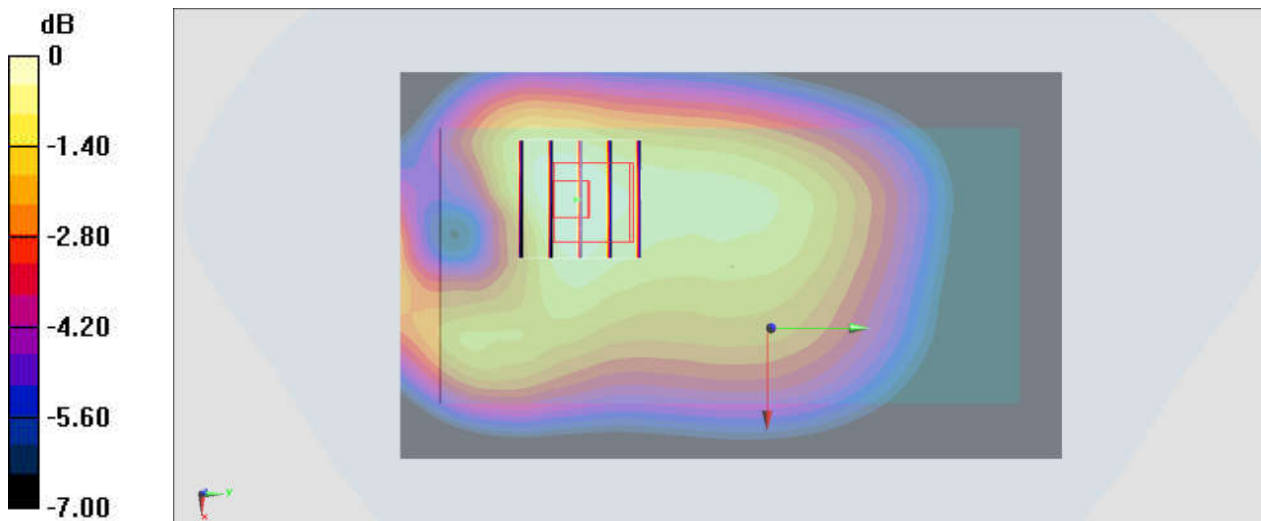
Communication System: CDMA; Frequency: 820.5 MHz; Duty Cycle: 1:1
Medium: MSL_850_181019 Medium parameters used : $f = 820.5$ MHz; $\sigma = 1.002$ S/m; $\epsilon_r = 55.387$;
 $\rho = 1000$ kg/m³
Ambient Temperature : 23.5 °C; Liquid Temperature : 22.5 °C

DASY5 Configuration:

- Probe: ES3DV3 - SN3169; ConvF(6.19, 6.19, 6.19) ; Calibrated: 2018/5/28
- Sensor-Surface: 3mm (Mechanical Surface Detection)
- Electronics: DAE3 Sn495; Calibrated: 2018/5/24
- Phantom: SAM-Right; Type: SAM; Serial: TP-1503
- Measurement SW: DASY52, Version 52.10 (1); SEMCAD X Version 14.6.11 (7439)

Area Scan (71x121x1): Interpolated grid: dx=1.500 mm, dy=1.500 mm
Maximum value of SAR (interpolated) = 0.294 W/kg

Zoom Scan (5x5x7)/Cube 0: Measurement grid: dx=8mm, dy=8mm, dz=5mm
Reference Value = 16.35 V/m; Power Drift = 0.03 dB
Peak SAR (extrapolated) = 0.335 W/kg
SAR(1 g) = 0.262 W/kg; SAR(10 g) = 0.197 W/kg
Maximum value of SAR (measured) = 0.288 W/kg



0 dB = 0.288 W/kg = -5.41 dBW/kg

#50_LTE Band 7_20M_QPSK_1_0_Back_15mm_Ch20850

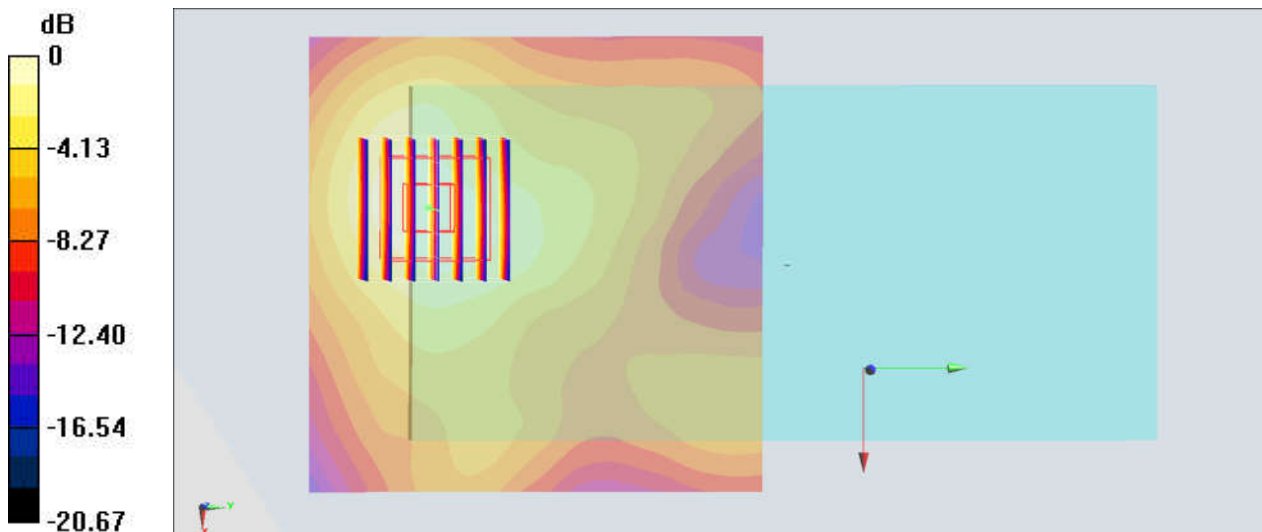
Communication System: LTE; Frequency: 2510 MHz; Duty Cycle: 1:1
Medium: MSL_2600_181106 Medium parameters used: $f = 2510$ MHz; $\sigma = 2.038$ S/m; $\epsilon_r = 51.976$;
 $\rho = 1000$ kg/m³
Ambient Temperature : 23.6 °C ; Liquid Temperature : 22.6 °C

DASY5 Configuration:

- Probe: ES3DV3 - SN3169; ConvF(4.27, 4.27, 4.27) ; Calibrated: 2018/5/28
- Sensor-Surface: 3mm (Mechanical Surface Detection)
- Electronics: DAE3 Sn495; Calibrated: 2018/5/24
- Phantom: SAM_Left; Type: QD000P40CD; Serial: TP:1431
- Measurement SW: DASY52, Version 52.10 (1); SEMCAD X Version 14.6.11 (7439)

Area Scan (81x81x1): Interpolated grid: dx=1.200 mm, dy=1.200 mm
Maximum value of SAR (interpolated) = 0.196 W/kg

Zoom Scan (7x7x7)/Cube 0: Measurement grid: dx=5mm, dy=5mm, dz=5mm
Reference Value = 9.161 V/m; Power Drift = -0.12 dB
Peak SAR (extrapolated) = 0.322 W/kg
SAR(1 g) = 0.157 W/kg; SAR(10 g) = 0.084 W/kg
Maximum value of SAR (measured) = 0.196 W/kg



0 dB = 0.196 W/kg = -7.08 dBW/kg

#51_LTE Band 12_10M_QPSK_1_25_Back_15mm_Ch23095

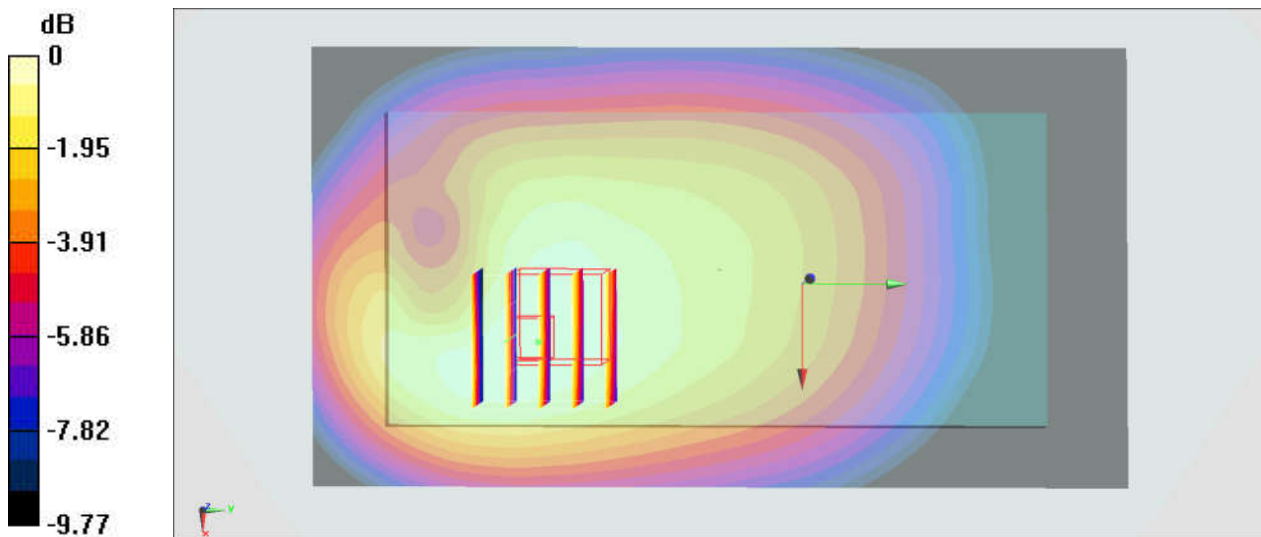
Communication System: LTE; Frequency: 707.5 MHz; Duty Cycle: 1:1
Medium: MSL_750_181020 Medium parameters used: $f = 707.5$ MHz; $\sigma = 0.938$ S/m; $\epsilon_r = 54.774$;
 $\rho = 1000$ kg/m³
Ambient Temperature : 23.2 °C ; Liquid Temperature : 22.2 °C

DASY5 Configuration:

- Probe: ES3DV3 - SN3169; ConvF(6.3, 6.3, 6.3) ; Calibrated: 2018/5/28
- Sensor-Surface: 3mm (Mechanical Surface Detection)
- Electronics: DAE3 Sn495; Calibrated: 2018/5/24
- Phantom: SAM-Right; Type: SAM; Serial: TP-1503
- Measurement SW: DASY52, Version 52.10 (1); SEMCAD X Version 14.6.11 (7439)

Area Scan (71x131x1): Interpolated grid: dx=1.500 mm, dy=1.500 mm
Maximum value of SAR (interpolated) = 0.155 W/kg

Zoom Scan (5x5x7)/Cube 0: Measurement grid: dx=8mm, dy=8mm, dz=5mm
Reference Value = 12.85 V/m; Power Drift = -0.01 dB
Peak SAR (extrapolated) = 0.187 W/kg
SAR(1 g) = 0.141 W/kg; SAR(10 g) = 0.106 W/kg
Maximum value of SAR (measured) = 0.156 W/kg



0 dB = 0.156 W/kg = -8.07 dBW/kg

#52_LTE Band 13_10M_QPSK_1_25_Back_15mm_Ch23230

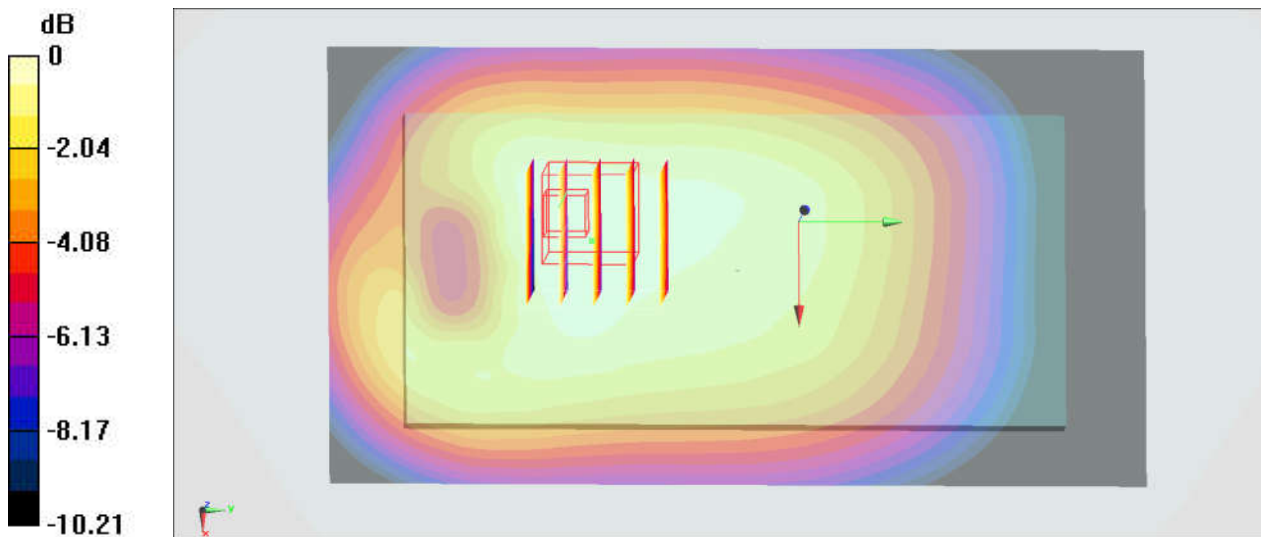
Communication System: LTE; Frequency: 782 MHz; Duty Cycle: 1:1
Medium: MSL_750_181020 Medium parameters used: $f = 782 \text{ MHz}$; $\sigma = 1.007 \text{ S/m}$; $\epsilon_r = 54.026$; $\rho = 1000 \text{ kg/m}^3$
Ambient Temperature : $23.2 \text{ }^\circ\text{C}$; Liquid Temperature : $22.2 \text{ }^\circ\text{C}$

DASY5 Configuration:

- Probe: ES3DV3 - SN3169; ConvF(6.3, 6.3, 6.3) ; Calibrated: 2018/5/28
- Sensor-Surface: 3mm (Mechanical Surface Detection)
- Electronics: DAE3 Sn495; Calibrated: 2018/5/24
- Phantom: SAM-Right; Type: SAM; Serial: TP-1503
- Measurement SW: DASY52, Version 52.10 (1); SEMCAD X Version 14.6.11 (7439)

Area Scan (71x131x1): Interpolated grid: $dx=1.500 \text{ mm}$, $dy=1.500 \text{ mm}$
Maximum value of SAR (interpolated) = 0.210 W/kg

Zoom Scan (5x5x7)/Cube 0: Measurement grid: $dx=8\text{mm}$, $dy=8\text{mm}$, $dz=5\text{mm}$
Reference Value = 14.17 V/m ; Power Drift = -0.01 dB
Peak SAR (extrapolated) = 0.235 W/kg
SAR(1 g) = 0.191 W/kg ; SAR(10 g) = 0.148 W/kg
Maximum value of SAR (measured) = 0.209 W/kg



0 dB = 0.209 W/kg = -6.80 dBW/kg

#53_LTE Band 25_20M_QPSK_1_0_Front_15mm_Ch26590

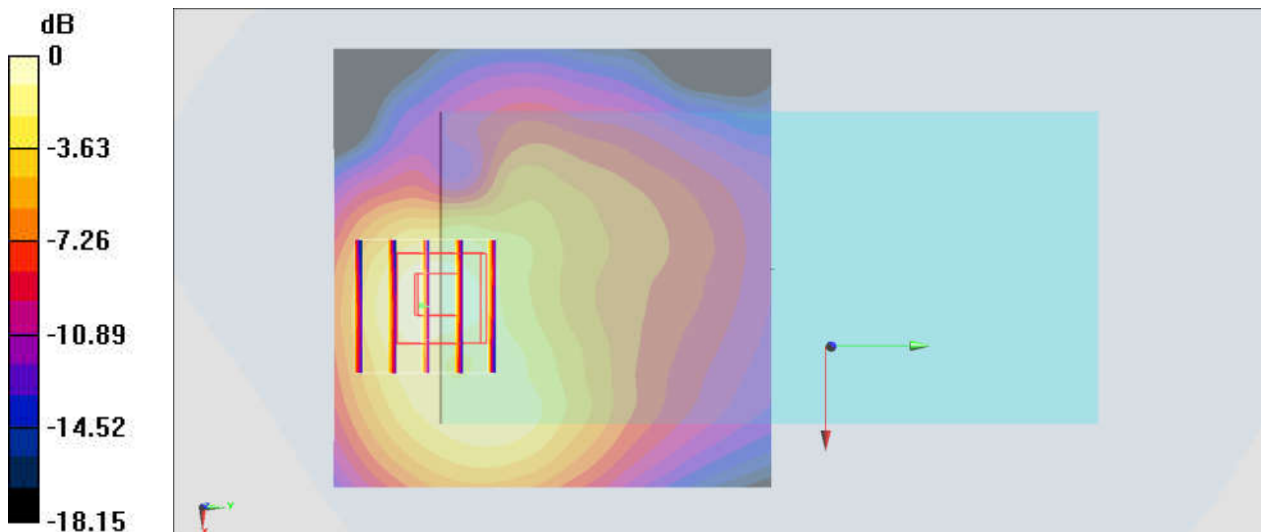
Communication System: LTE; Frequency: 1905 MHz; Duty Cycle: 1:1
Medium: MSL_1900_181107 Medium parameters used : $f = 1905$ MHz; $\sigma = 1.546$ S/m; $\epsilon_r = 54.074$;
 $\rho = 1000$ kg/m³
Ambient Temperature : 23.3 °C; Liquid Temperature : 22.3 °C

DASY5 Configuration:

- Probe: ES3DV3 - SN3169; ConvF(4.8, 4.8, 4.8) ; Calibrated: 2018/5/28
- Sensor-Surface: 3mm (Mechanical Surface Detection)
- Electronics: DAE3 Sn495; Calibrated: 2018/5/24
- Phantom: SAM_Left; Type: QD000P40CD; Serial: TP:1431
- Measurement SW: DASY52, Version 52.10 (1); SEMCAD X Version 14.6.11 (7439)

Area Scan (71x71x1): Interpolated grid: dx=1.500 mm, dy=1.500 mm
Maximum value of SAR (interpolated) = 0.211 W/kg

Zoom Scan (5x5x7)/Cube 0: Measurement grid: dx=8mm, dy=8mm, dz=5mm
Reference Value = 11.19 V/m; Power Drift = 0.12 dB
Peak SAR (extrapolated) = 0.306 W/kg
SAR(1 g) = 0.190 W/kg; SAR(10 g) = 0.109 W/kg
Maximum value of SAR (measured) = 0.219 W/kg



0 dB = 0.219 W/kg = -6.60 dBW/kg

#54_LTE Band 26_15M_QPSK_1_0_Back_15mm_Ch26865

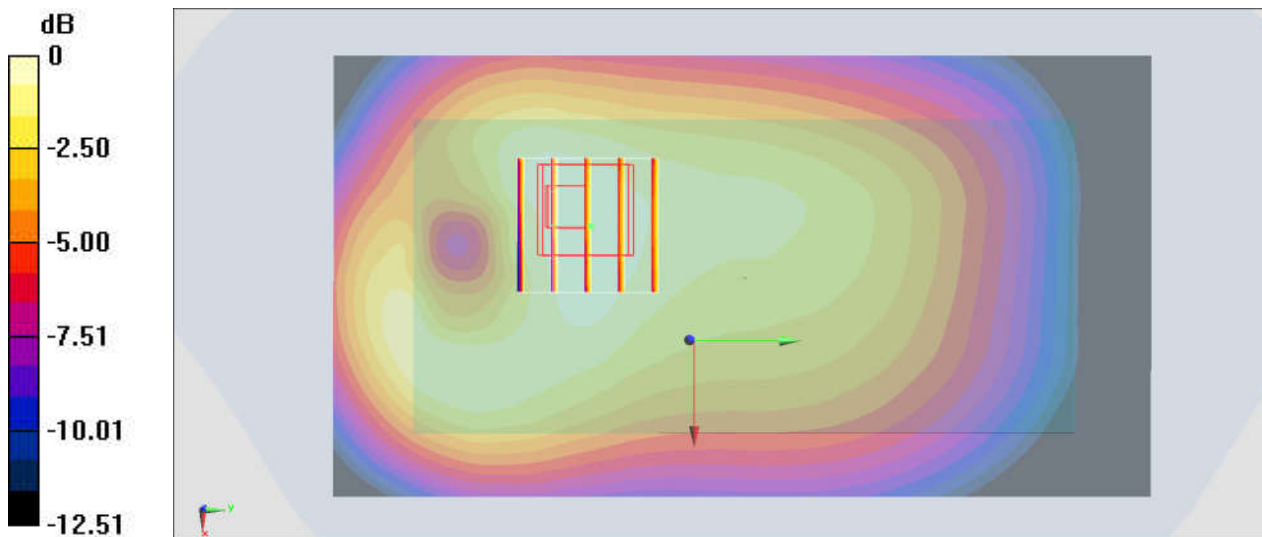
Communication System: LTE ; Frequency: 831.5 MHz;Duty Cycle: 1:1
Medium: MSL_850_181019 Medium parameters used: $f = 831.5$ MHz; $\sigma = 1.004$ S/m; $\epsilon_r = 55.354$;
 $\rho = 1000$ kg/m³
Ambient Temperature : 23.5 °C ; Liquid Temperature : 22.5 °C

DASY5 Configuration:

- Probe: ES3DV3 - SN3169; ConvF(6.19, 6.19, 6.19) ; Calibrated: 2018/5/28
- Sensor-Surface: 3mm (Mechanical Surface Detection)
- Electronics: DAE3 Sn495; Calibrated: 2018/5/24
- Phantom: SAM-Right; Type: SAM; Serial: TP-1503
- Measurement SW: DASY52, Version 52.10 (1);SEMCAD X Version 14.6.11 (7439)

Area Scan (71x131x1): Interpolated grid: dx=1.500 mm, dy=1.500 mm
Maximum value of SAR (interpolated) = 0.224 W/kg

Zoom Scan (5x5x7)/Cube 0: Measurement grid: dx=8mm, dy=8mm, dz=5mm
Reference Value = 14.00 V/m; Power Drift = 0.01 dB
Peak SAR (extrapolated) = 0.260 W/kg
SAR(1 g) = 0.201 W/kg; SAR(10 g) = 0.147 W/kg
Maximum value of SAR (measured) = 0.221 W/kg



0 dB = 0.221 W/kg = -6.56 dBW/kg

#55_LTE Band 30_10M_QPSK_1_0_Back_15mm_Ch27710

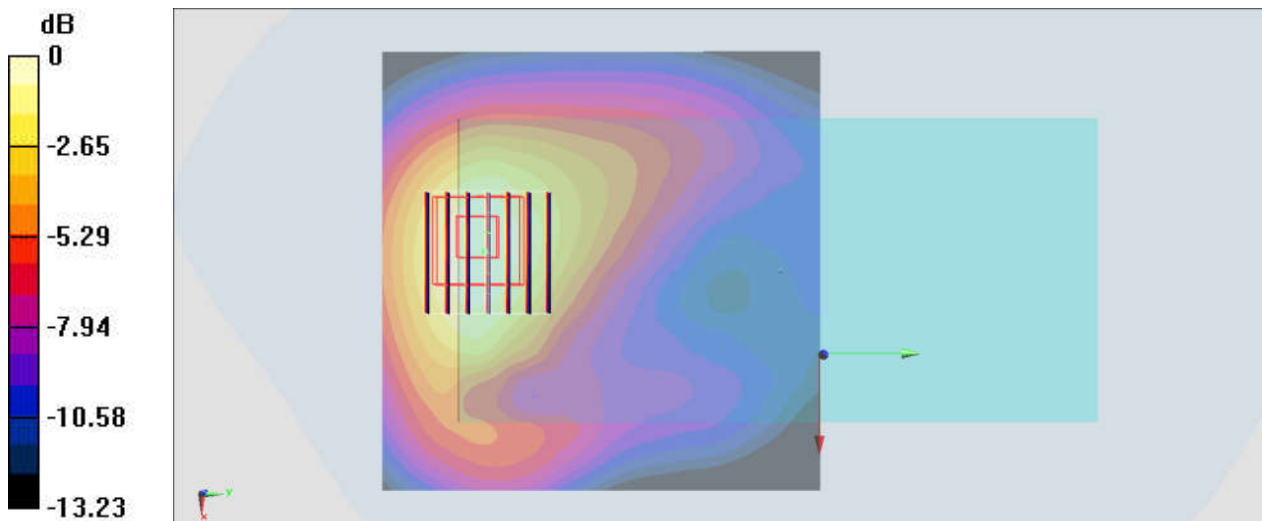
Communication System: LTE; Frequency: 2310 MHz; Duty Cycle: 1:1
Medium: MSL_2300_181022 Medium parameters used: $f = 2310$ MHz; $\sigma = 1.807$ S/m; $\epsilon_r = 52.729$;
 $\rho = 1000$ kg/m³
Ambient Temperature : 23.4 °C ; Liquid Temperature : 22.4 °C

DASY5 Configuration:

- Probe: ES3DV3 - SN3169; ConvF(4.5, 4.5, 4.5) ; Calibrated: 2018/5/28
- Sensor-Surface: 3mm (Mechanical Surface Detection)
- Electronics: DAE3 Sn495; Calibrated: 2018/5/24
- Phantom: SAM_Left; Type: QD000P40CD; Serial: TP:1431
- Measurement SW: DASY52, Version 52.10 (1); SEMCAD X Version 14.6.11 (7439)

Area Scan (91x91x1): Interpolated grid: dx=1.200 mm, dy=1.200 mm
Maximum value of SAR (interpolated) = 0.271 W/kg

Zoom Scan (7x7x7)/Cube 0: Measurement grid: dx=5mm, dy=5mm, dz=5mm
Reference Value = 12.51 V/m; Power Drift = 0.02 dB
Peak SAR (extrapolated) = 0.382 W/kg
SAR(1 g) = 0.222 W/kg; SAR(10 g) = 0.129 W/kg
Maximum value of SAR (measured) = 0.266 W/kg



0 dB = 0.266 W/kg = -5.75 dBW/kg

#56_LTE Band 66_20M_QPSK_1_0_Back_15mm_Ch132072

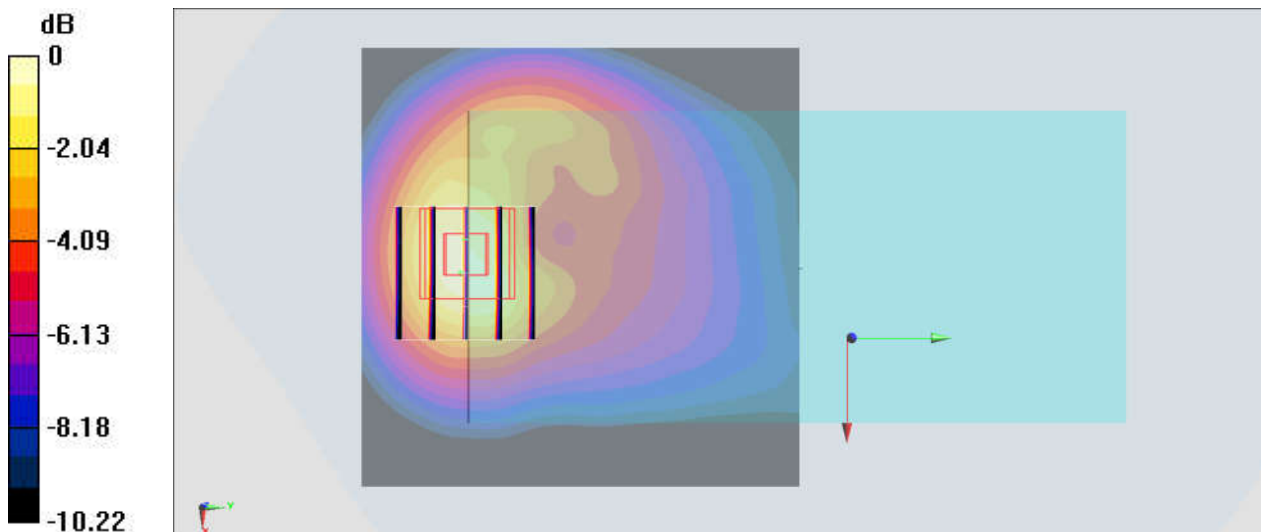
Communication System: LTE; Frequency: 1720 MHz; Duty Cycle: 1:1
Medium: MSL_1750_181106 Medium parameters used: $f = 1720$ MHz; $\sigma = 1.463$ S/m; $\epsilon_r = 52.836$;
 $\rho = 1000$ kg/m³
Ambient Temperature : 23.2 °C ; Liquid Temperature : 22.2 °C

DASY5 Configuration:

- Probe: ES3DV3 - SN3169; ConvF(5.06, 5.06, 5.06) ; Calibrated: 2018/5/28
- Sensor-Surface: 3mm (Mechanical Surface Detection)
- Electronics: DAE3 Sn495; Calibrated: 2018/5/24
- Phantom: SAM_Left; Type: QD000P40CD; Serial: TP:1431
- Measurement SW: DASY52, Version 52.10 (1); SEMCAD X Version 14.6.11 (7439)

Area Scan (71x71x1): Interpolated grid: dx=1.500 mm, dy=1.500 mm
Maximum value of SAR (interpolated) = 0.324 W/kg

Zoom Scan (5x5x7)/Cube 0: Measurement grid: dx=8mm, dy=8mm, dz=5mm
Reference Value = 13.21 V/m; Power Drift = 0.02 dB
Peak SAR (extrapolated) = 0.454 W/kg
SAR(1 g) = 0.296 W/kg; SAR(10 g) = 0.180 W/kg
Maximum value of SAR (measured) = 0.348 W/kg



0 dB = 0.348 W/kg = -4.58 dBW/kg

#57_LTE Band 41_20M_QPSK_1_0_Front_15mm_Ch39750

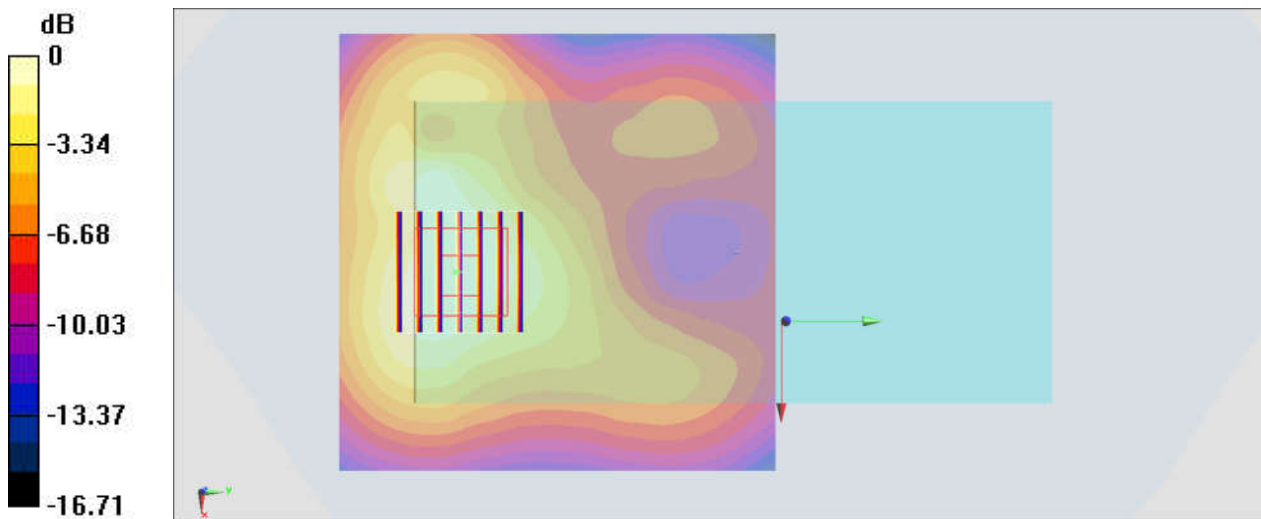
Communication System: LTE; Frequency: 2506 MHz; Duty Cycle: 1:1.59
Medium: MSL_2600_181022 Medium parameters used: $f = 2506$ MHz; $\sigma = 2.011$ S/m; $\epsilon_r = 52.143$;
 $\rho = 1000$ kg/m³
Ambient Temperature : 23.4 °C ; Liquid Temperature : 22.4 °C

DASY5 Configuration:

- Probe: ES3DV3 - SN3169; ConvF(4.27, 4.27, 4.27) ; Calibrated: 2018/5/28
- Sensor-Surface: 3mm (Mechanical Surface Detection)
- Electronics: DAE3 Sn495; Calibrated: 2018/5/24
- Phantom: SAM_Left; Type: QD000P40CD; Serial: TP:1431
- Measurement SW: DASY52, Version 52.10 (1); SEMCAD X Version 14.6.11 (7439)

Area Scan (91x91x1): Interpolated grid: dx=1.200 mm, dy=1.200 mm
Maximum value of SAR (interpolated) = 0.224 W/kg

Zoom Scan (7x7x7)/Cube 0: Measurement grid: dx=5mm, dy=5mm, dz=5mm
Reference Value = 10.51 V/m; Power Drift = 0.01 dB
Peak SAR (extrapolated) = 0.346 W/kg
SAR(1 g) = 0.182 W/kg; SAR(10 g) = 0.104 W/kg
Maximum value of SAR (measured) = 0.222 W/kg



0 dB = 0.222 W/kg = -6.54 dBW/kg

#58_WLAN2.4GHz_802.11b 1Mbps_Back_15mm_Ch1;Chain 0

Communication System: 802.11b; Frequency: 2412 MHz; Duty Cycle: 1:1.011

Medium: MSL_2450_181030 Medium parameters used: $f = 2412$ MHz; $\sigma = 1.956$ S/m; $\epsilon_r = 53.83$; $\rho = 1000$ kg/m³

Ambient Temperature : 23.3 °C ; Liquid Temperature : 22.3 °C

DASY5 Configuration:

- Probe: ES3DV3 - SN3169; ConvF(4.4, 4.4, 4.4) ; Calibrated: 2018/5/28
- Sensor-Surface: 3mm (Mechanical Surface Detection)
- Electronics: DAE3 Sn495; Calibrated: 2018/5/24
- Phantom: SAM_Right; Type: SAM; Serial: TP:1479
- Measurement SW: DASY52, Version 52.10 (1); SEMCAD X Version 14.6.11 (7439)

Area Scan (91x91x1): Interpolated grid: dx=1.200 mm, dy=1.200 mm

Maximum value of SAR (interpolated) = 0.0401 W/kg

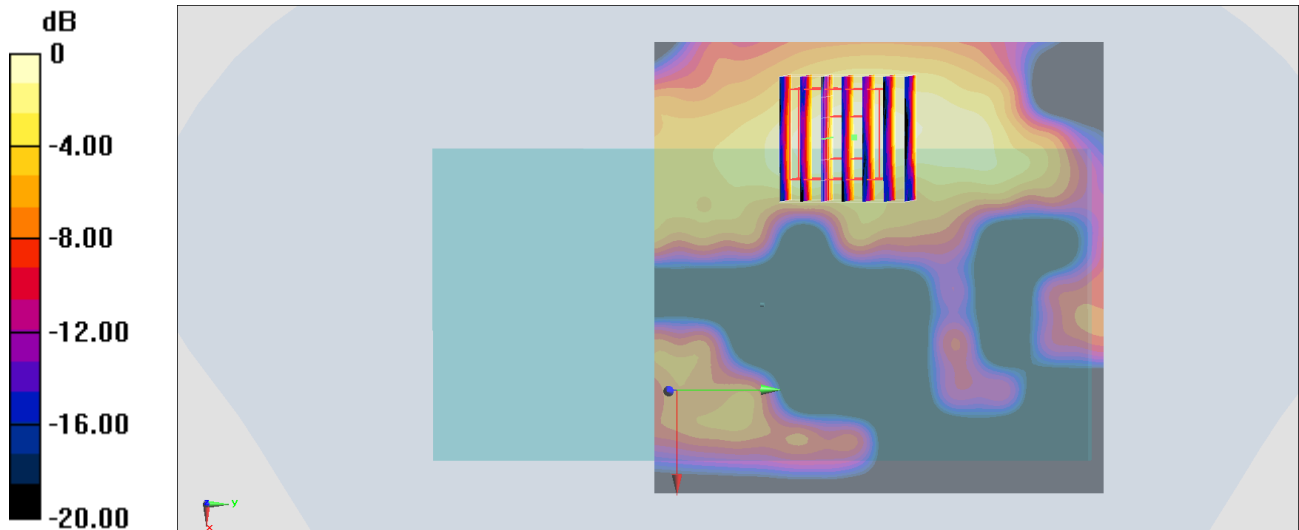
Zoom Scan (7x7x7)/Cube 0: Measurement grid: dx=5mm, dy=5mm, dz=5mm

Reference Value = 4.430 V/m; Power Drift = -0.14 dB

Peak SAR (extrapolated) = 0.0640 W/kg

SAR(1 g) = 0.030 W/kg; SAR(10 g) = 0.014 W/kg

Maximum value of SAR (measured) = 0.0390 W/kg



0 dB = 0.0390 W/kg = -14.09 dBW/kg

#59_WLAN5GHz_802.11a_6Mbps_Back_15mm_Ch64;Chain 1

Communication System: 802.11a; Frequency: 5320 MHz; Duty Cycle: 1:1.022

Medium: MSL_5G_181115 Medium parameters used: $f = 5320$ MHz; $\sigma = 5.477$ S/m; $\epsilon_r = 47.446$; $\rho = 1000$ kg/m³

Ambient Temperature : 23.7 °C; Liquid Temperature : 22.7 °C

DASY5 Configuration:

- Probe: EX3DV4 - SN3976; ConvF(4.92, 4.92, 4.92) ; Calibrated: 2018/1/23
- Sensor-Surface: 1.4mm (Mechanical Surface Detection)
- Electronics: DAE4 Sn1424; Calibrated: 2018/1/18
- Phantom: SAM_Right; Type: SAM; Serial: TP:1479
- Measurement SW: DASY52, Version 52.10 (1); SEMCAD X Version 14.6.11 (7439)

Area Scan (101x101x1): Interpolated grid: dx=1.000 mm, dy=1.000 mm

Maximum value of SAR (interpolated) = 0.167 W/kg

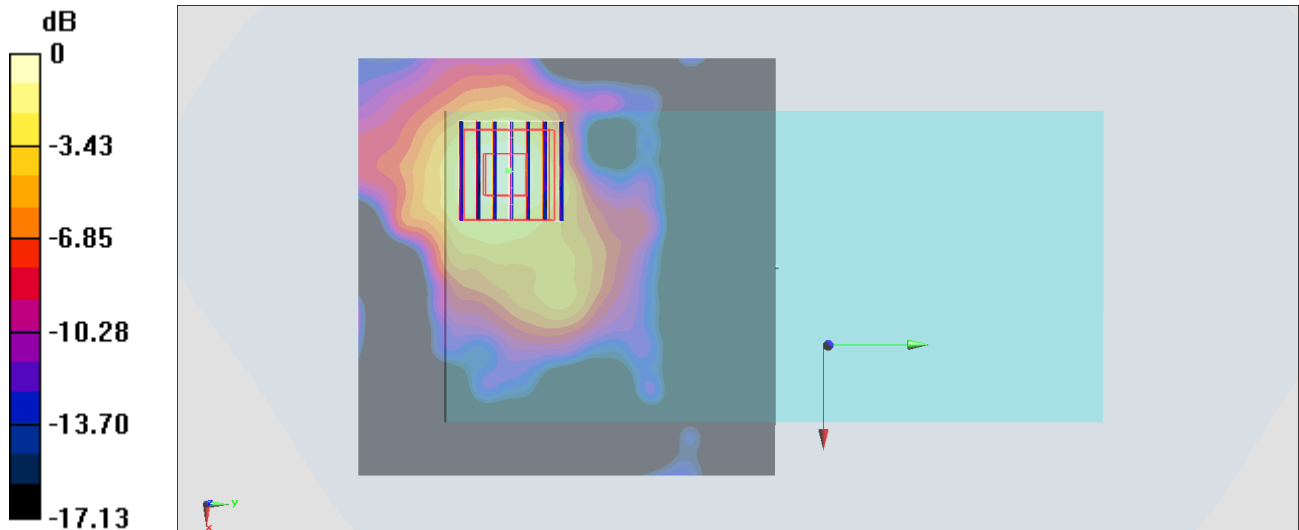
Zoom Scan (7x7x7)/Cube 0: Measurement grid: dx=4mm, dy=4mm, dz=1.4mm

Reference Value = 4.885 V/m; Power Drift = -0.01 dB

Peak SAR (extrapolated) = 0.299 W/kg

SAR(1 g) = 0.077 W/kg; SAR(10 g) = 0.031 W/kg

Maximum value of SAR (measured) = 0.167 W/kg



0 dB = 0.167 W/kg = -7.77 dBW/kg

#60_WLAN5GHz_802.11a_6Mbps_Back_15mm_Ch100;Chain 1

Communication System: 802.11a; Frequency: 5500 MHz; Duty Cycle: 1:1.022

Medium: MSL_5G_181115 Medium parameters used: $f = 5500$ MHz; $\sigma = 5.715$ S/m; $\epsilon_r = 47.18$; $\rho = 1000$ kg/m³

Ambient Temperature : 23.7 °C ; Liquid Temperature : 22.7 °C

DASY5 Configuration:

- Probe: EX3DV4 - SN3976; ConvF(4.28, 4.28, 4.28) ; Calibrated: 2018/1/23
- Sensor-Surface: 1.4mm (Mechanical Surface Detection)
- Electronics: DAE4 Sn1424; Calibrated: 2018/1/18
- Phantom: SAM_Right; Type: SAM; Serial: TP:1479
- Measurement SW: DASY52, Version 52.10 (1); SEMCAD X Version 14.6.11 (7439)

Area Scan (101x101x1): Interpolated grid: dx=1.000 mm, dy=1.000 mm

Maximum value of SAR (interpolated) = 0.127 W/kg

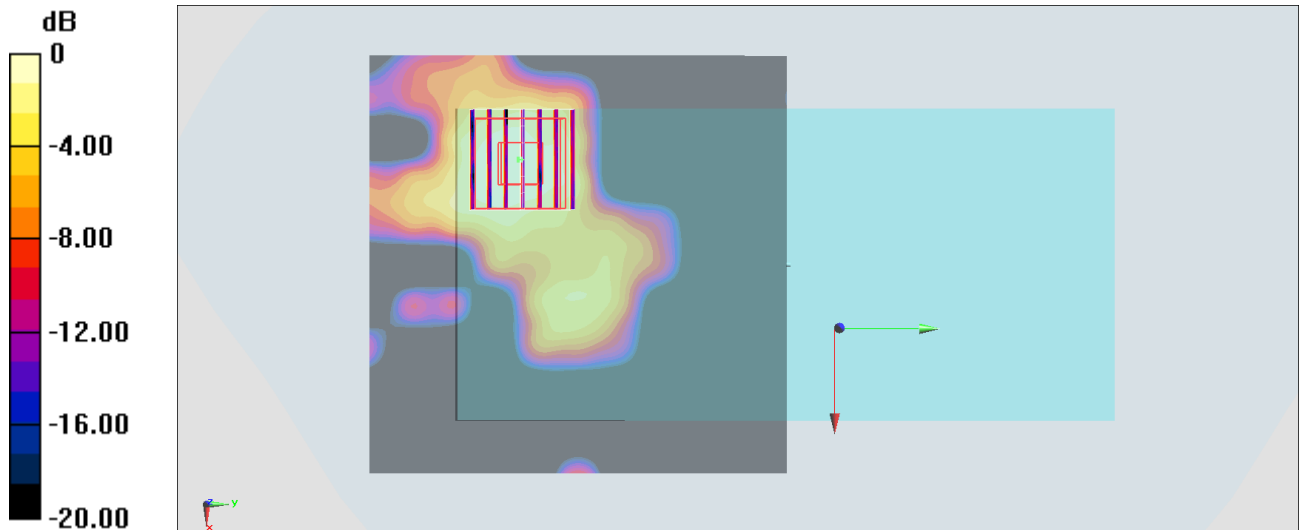
Zoom Scan (7x7x7)/Cube 0: Measurement grid: dx=4mm, dy=4mm, dz=1.4mm

Reference Value = 4.521 V/m; Power Drift = -0.01 dB

Peak SAR (extrapolated) = 0.229 W/kg

SAR(1 g) = 0.054 W/kg; SAR(10 g) = 0.020 W/kg

Maximum value of SAR (measured) = 0.121 W/kg



0 dB = 0.121 W/kg = -9.17 dBW/kg

#61_WLAN5GHz_802.11a 6Mbps_Back_15mm_Ch157;Chain 1

Communication System: 802.11a; Frequency: 5785 MHz; Duty Cycle: 1:1.022

Medium: MSL_5G_181115 Medium parameters used : $f = 5785$ MHz; $\sigma = 6.111$ S/m; $\epsilon_r = 46.684$; $\rho = 1000$ kg/m³

Ambient Temperature : 23.7 °C ; Liquid Temperature : 22.7 °C

DASY5 Configuration:

- Probe: EX3DV4 - SN3976; ConvF(4.46, 4.46, 4.46) ; Calibrated: 2018/1/23
- Sensor-Surface: 1.4mm (Mechanical Surface Detection)
- Electronics: DAE4 Sn1424; Calibrated: 2018/1/18
- Phantom: SAM_Right; Type: SAM; Serial: TP:1479
- Measurement SW: DASY52, Version 52.10 (1); SEMCAD X Version 14.6.11 (7439)

Area Scan (101x91x1): Interpolated grid: dx=1.000 mm, dy=1.000 mm

Maximum value of SAR (interpolated) = 0.0770 W/kg

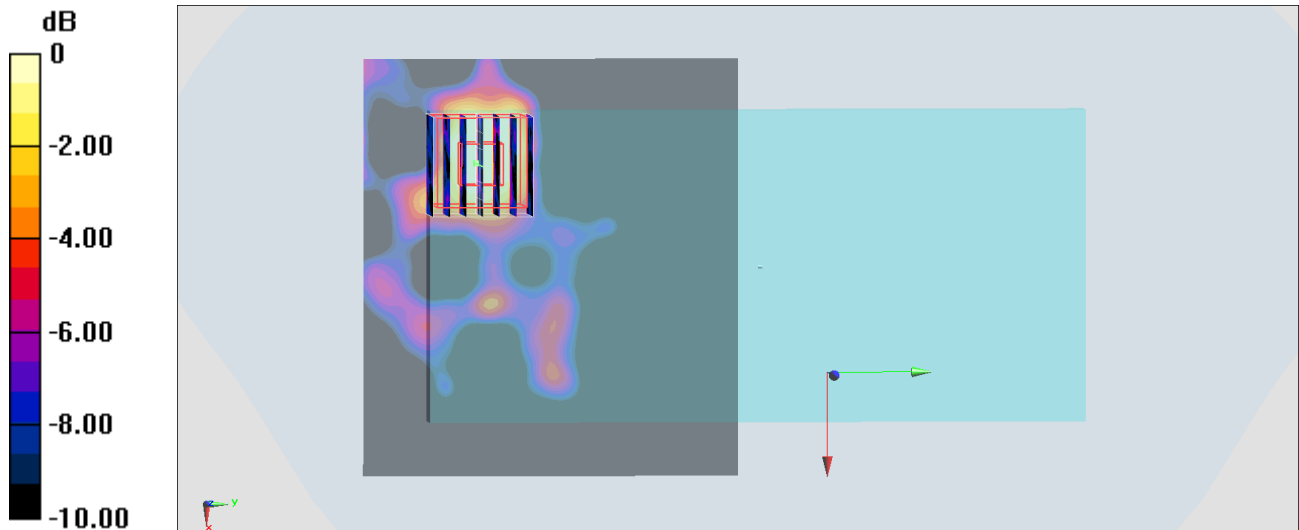
Zoom Scan (7x7x7)/Cube 0: Measurement grid: dx=4mm, dy=4mm, dz=1.4mm

Reference Value = 3.298 V/m; Power Drift = -0.02 dB

Peak SAR (extrapolated) = 0.135 W/kg

SAR(1 g) = 0.026 W/kg; SAR(10 g) = 0.011 W/kg

Maximum value of SAR (measured) = 0.0618 W/kg



0 dB = 0.0618 W/kg = -12.09 dBW/kg

#62_Bluetooth_1Mbps_Front_15mm_Ch78;Chain 0

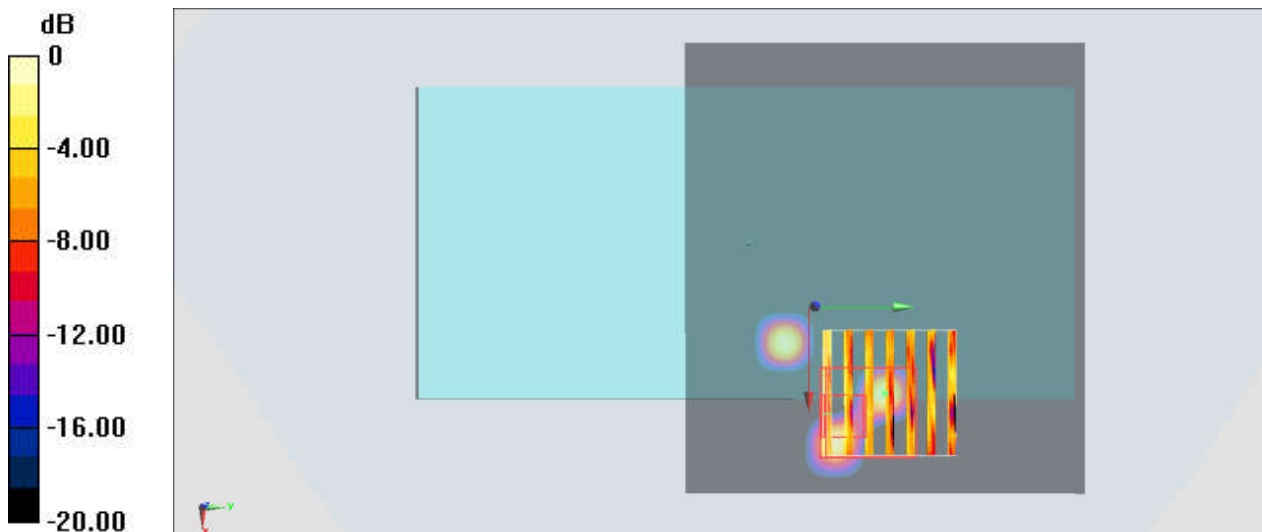
Communication System: Bluetooth; Frequency: 2480 MHz; Duty Cycle: 1:1.297
Medium: MSL_2600_181113 Medium parameters used: $f = 2480$ MHz; $\sigma = 1.988$ S/m; $\epsilon_r = 52.017$;
 $\rho = 1000$ kg/m³
Ambient Temperature : 23.3 °C ; Liquid Temperature : 22.3 °C

DASY5 Configuration:

- Probe: ES3DV3 - SN3169; ConvF(4.4, 4.4, 4.4) ; Calibrated: 2018/5/28
- Sensor-Surface: 3mm (Mechanical Surface Detection)
- Electronics: DAE3 Sn495; Calibrated: 2018/5/24
- Phantom: SAM_Left; Type: QD000P40CD; Serial: TP:1431
- Measurement SW: DASY52, Version 52.10 (1); SEMCAD X Version 14.6.11 (7439)

Area Scan (91x81x1): Interpolated grid: dx=1.200 mm, dy=1.200 mm
Maximum value of SAR (interpolated) = 0.00358 W/kg

Zoom Scan (7x7x7)/Cube 0: Measurement grid: dx=5mm, dy=5mm, dz=5mm
Reference Value = 1.423 V/m; Power Drift = 0.15 dB
Peak SAR (extrapolated) = 0.0200 W/kg
SAR(1 g) = 0.00318 W/kg; SAR(10 g) = 0.000513 W/kg
Maximum value of SAR (measured) = 0.00456 W/kg



0 dB = 0.00456 W/kg = -23.41 dBW/kg

#63_WLAN5GHz_802.11a 6Mbps_Back_0mm_Ch52;Chain 1

Communication System: 802.11a; Frequency: 5260 MHz; Duty Cycle: 1:1.022

Medium: MSL_5G_181114 Medium parameters used: $f = 5260$ MHz; $\sigma = 5.224$ S/m; $\epsilon_r = 49.469$; $\rho = 1000$ kg/m³

Ambient Temperature : 23.6 °C ; Liquid Temperature : 22.6 °C

DASY5 Configuration:

- Probe: EX3DV4 - SN3976; ConvF(4.92, 4.92, 4.92) ; Calibrated: 2018/1/23
- Sensor-Surface: 1.4mm (Mechanical Surface Detection)
- Electronics: DAE4 Sn1424; Calibrated: 2018/1/18
- Phantom: SAM_Right; Type: SAM; Serial: TP:1479
- Measurement SW: DASY52, Version 52.10 (1); SEMCAD X Version 14.6.11 (7439)

Area Scan (101x91x1): Interpolated grid: dx=1.000 mm, dy=1.000 mm

Maximum value of SAR (interpolated) = 2.22 W/kg

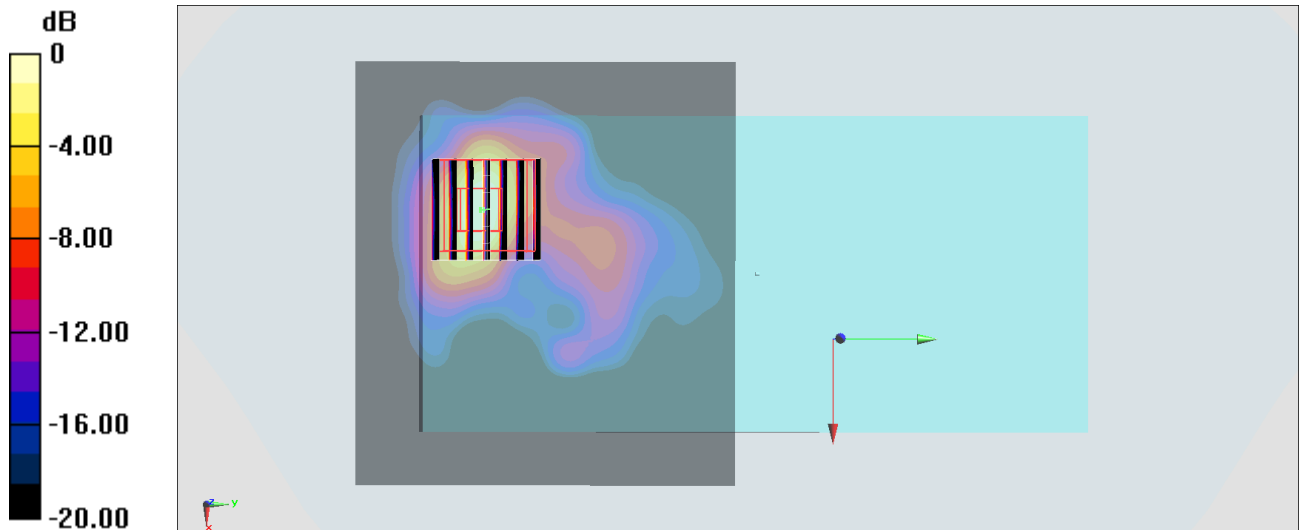
Zoom Scan (7x7x7)/Cube 0: Measurement grid: dx=4mm, dy=4mm, dz=1.4mm

Reference Value = 13.28 V/m; Power Drift = -0.01 dB

Peak SAR (extrapolated) = 3.73 W/kg

SAR(1 g) = 0.719 W/kg; SAR(10 g) = 0.218 W/kg

Maximum value of SAR (measured) = 1.99 W/kg



0 dB = 1.99 W/kg = 2.99 dBW/kg

#64_WLAN5GHz_802.11a_6Mbps_Front_0mm_Ch132;Chain 0

Communication System: 802.11a; Frequency: 5660 MHz; Duty Cycle: 1:1.022

Medium: MSL_5G_181114 Medium parameters used: $f = 5660$ MHz; $\sigma = 5.764$ S/m; $\epsilon_r = 48.835$; $\rho = 1000$ kg/m³

Ambient Temperature : 23.6 °C ; Liquid Temperature : 22.6 °C

DASY5 Configuration:

- Probe: EX3DV4 - SN3976; ConvF(4.28, 4.28, 4.28) ; Calibrated: 2018/1/23
- Sensor-Surface: 1.4mm (Mechanical Surface Detection)
- Electronics: DAE4 Sn1424; Calibrated: 2018/1/18
- Phantom: SAM_Right; Type: SAM; Serial: TP:1479
- Measurement SW: DASY52, Version 52.10 (1); SEMCAD X Version 14.6.11 (7439)

Area Scan (101x91x1): Interpolated grid: dx=1.000 mm, dy=1.000 mm

Maximum value of SAR (interpolated) = 3.98 W/kg

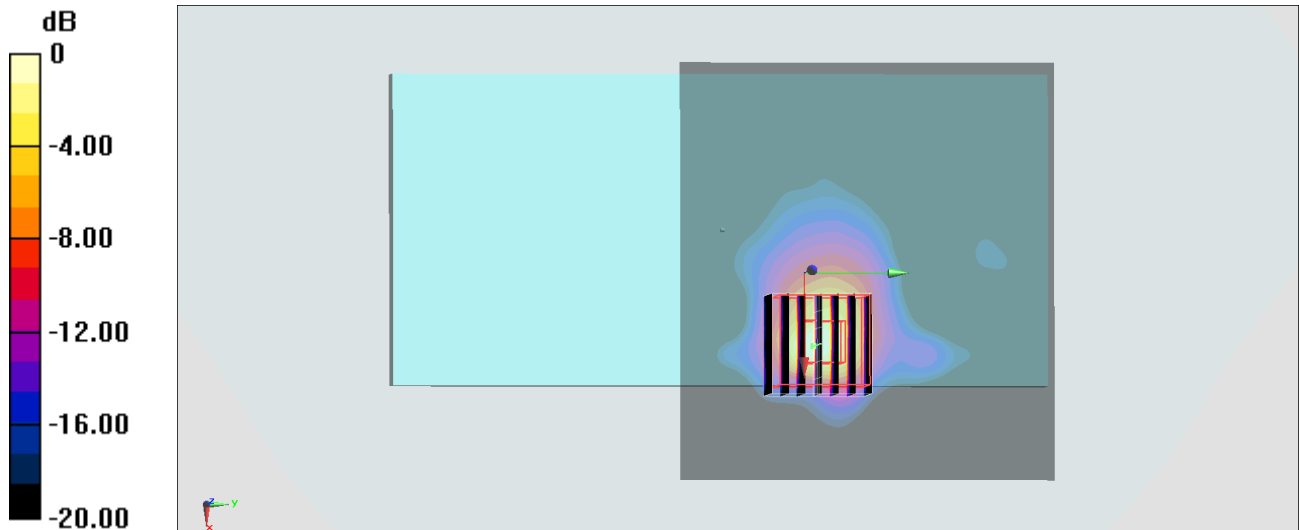
Zoom Scan (7x7x7)/Cube 0: Measurement grid: dx=4mm, dy=4mm, dz=1.4mm

Reference Value = 9.469 V/m; Power Drift = -0.16 dB

Peak SAR (extrapolated) = 8.23 W/kg

SAR(1 g) = 1.26 W/kg; SAR(10 g) = 0.322 W/kg

Maximum value of SAR (measured) = 3.74 W/kg



0 dB = 3.74 W/kg = 5.73 dBW/kg