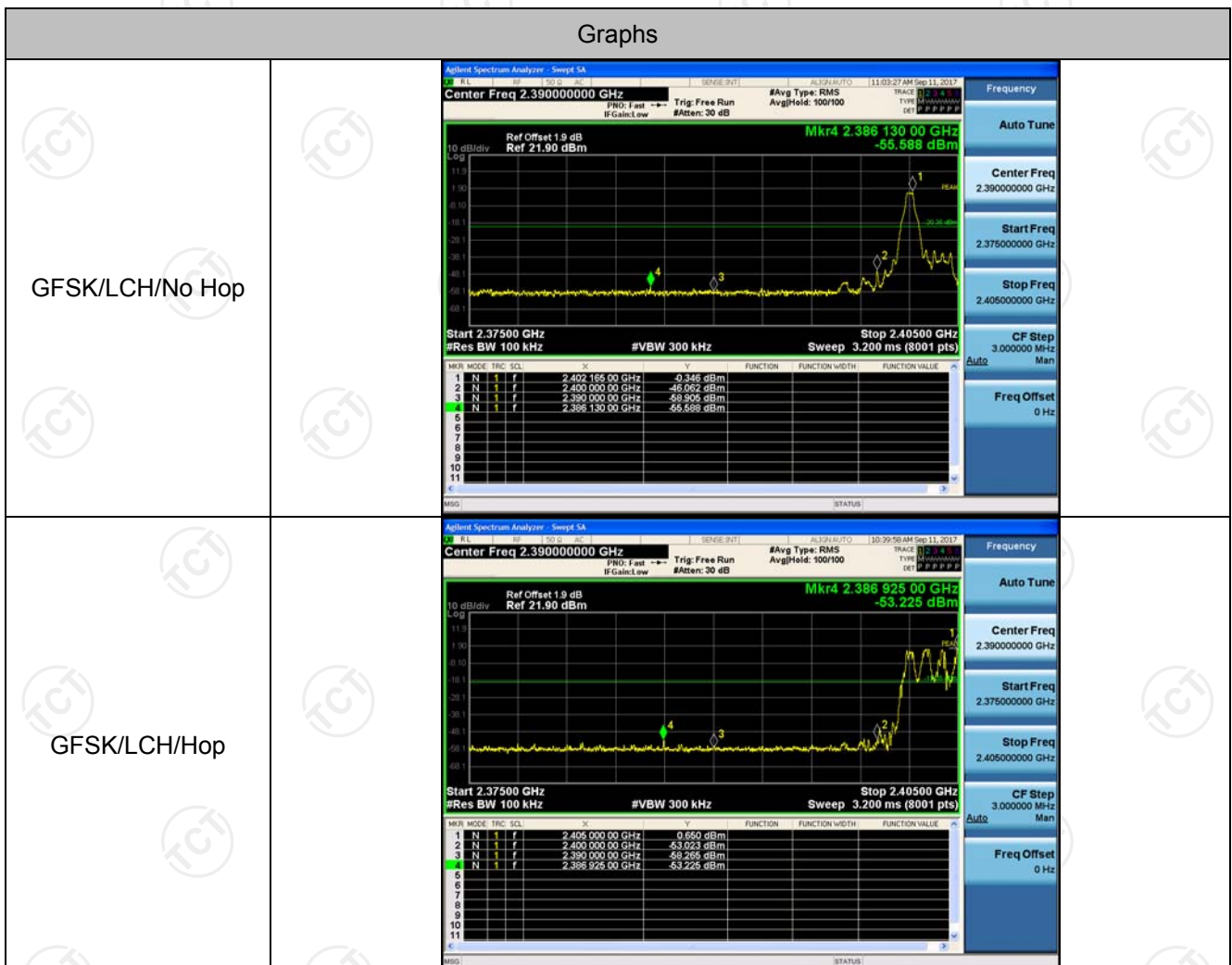


Appendix F): Band-edge for RF Conducted Emissions

Result Table

Mode	Channel	Carrier Frequency [MHz]	Carrier Power [dBm]	Frequency Hopping	Max Spurious Level [dBm]	Limit [dBm]	Verdict
GFSK	LCH	2402	-0.346	Off	-55.588	-20.35	PASS
			0.650	On	-53.225	-19.35	PASS
GFSK	HCH	2480	1.715	Off	-49.947	-18.29	PASS
			1.913	On	-52.455	-18.09	PASS
π/4DQPSK	LCH	2402	-3.777	Off	-56.398	-23.78	PASS
			-2.384	On	-55.102	-22.38	PASS
π/4DQPSK	HCH	2480	-1.076	Off	-52.621	-21.08	PASS
			-0.472	On	-51.356	-20.47	PASS

Test Graph

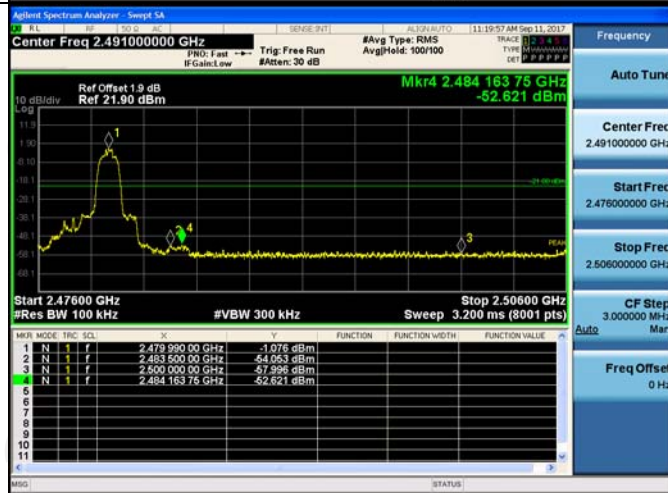


<p>GFSK/HCH/No Hop</p>	
<p>GFSK/HCH/Hop</p>	
<p>$\pi/4$DQPSK/LCH/No Hop</p>	

$\pi/4$ DQPSK/LCH/Hop



$\pi/4$ DQPSK/HCH/No Hop



$\pi/4$ DQPSK/HCH/Hop

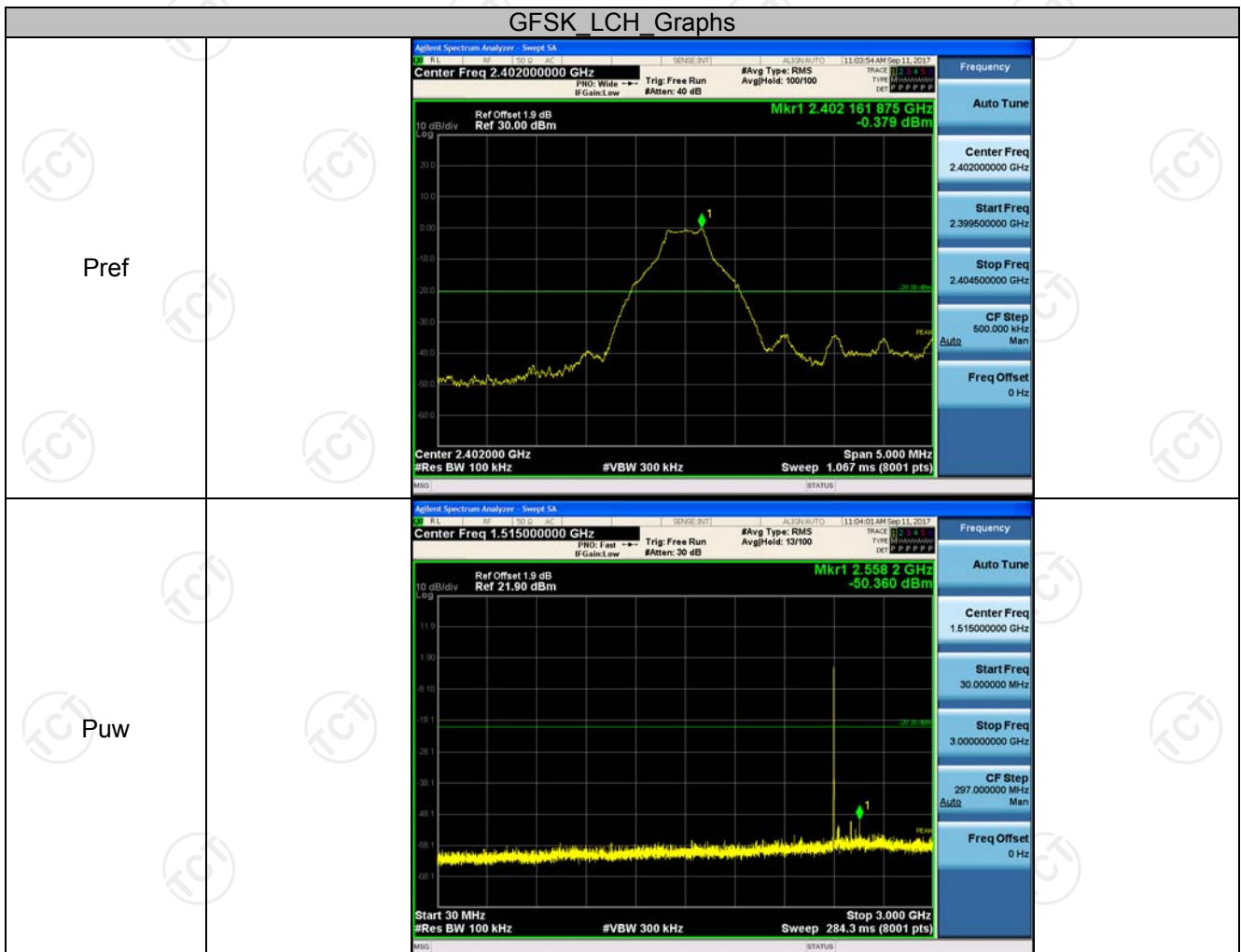


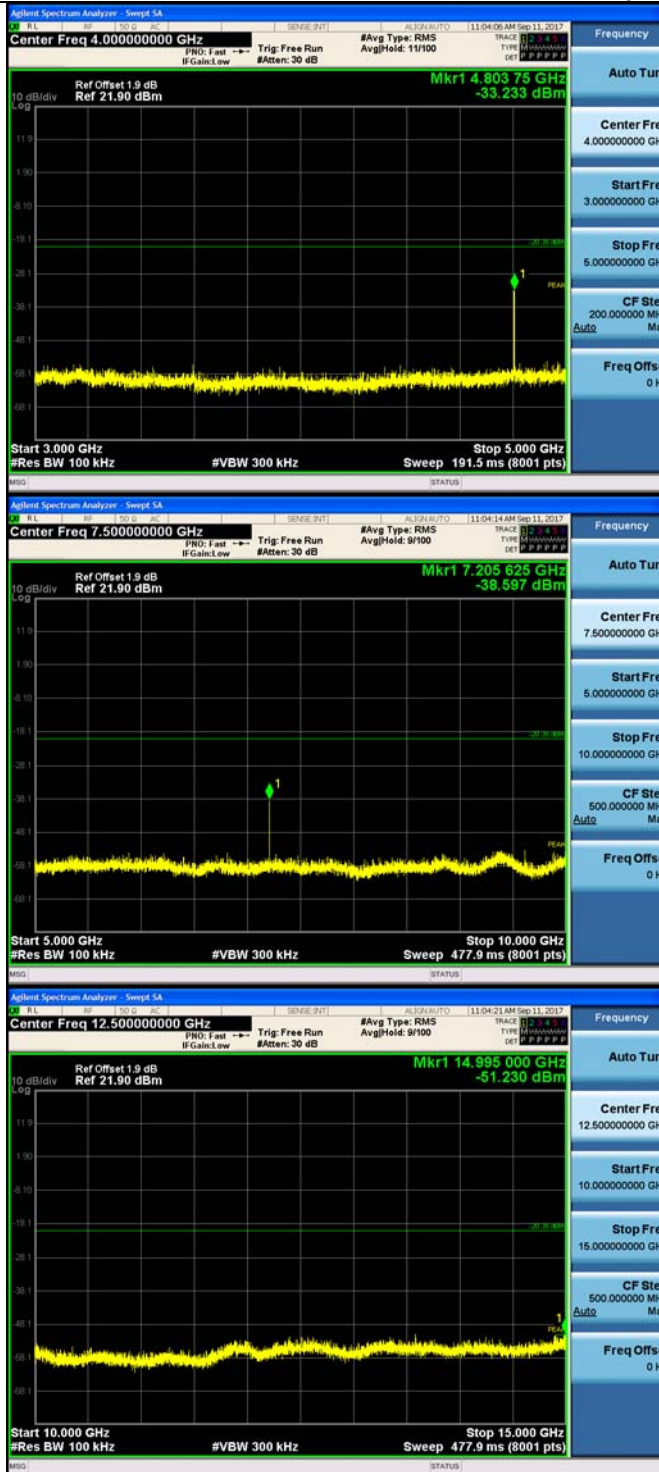
RF Conducted Spurious Emissions

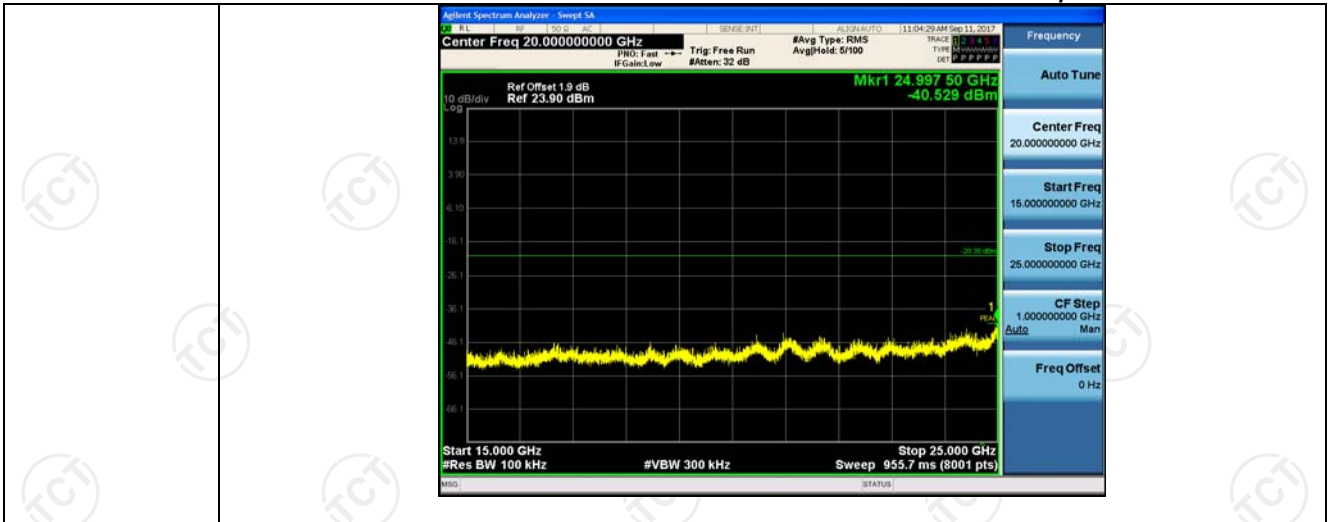
Result Table

Mode	Channel	Pref [dBm]	Puw[dBm]	Verdict
GFSK	LCH	-0.379	<Limit	PASS
GFSK	MCH	1.605	<Limit	PASS
GFSK	HCH	1.694	<Limit	PASS
$\pi/4$ DQPSK	LCH	-3.866	<Limit	PASS
$\pi/4$ DQPSK	MCH	-1.149	<Limit	PASS
$\pi/4$ DQPSK	HCH	-0.957	<Limit	PASS
8DPSK	LCH	#tx3dh51lchnnpref	<Limit	PASS
8DPSK	MCH	#tx3dh51mchnnpref	<Limit	PASS
8DPSK	HCH	#tx3dh51hchnnpref	<Limit	PASS

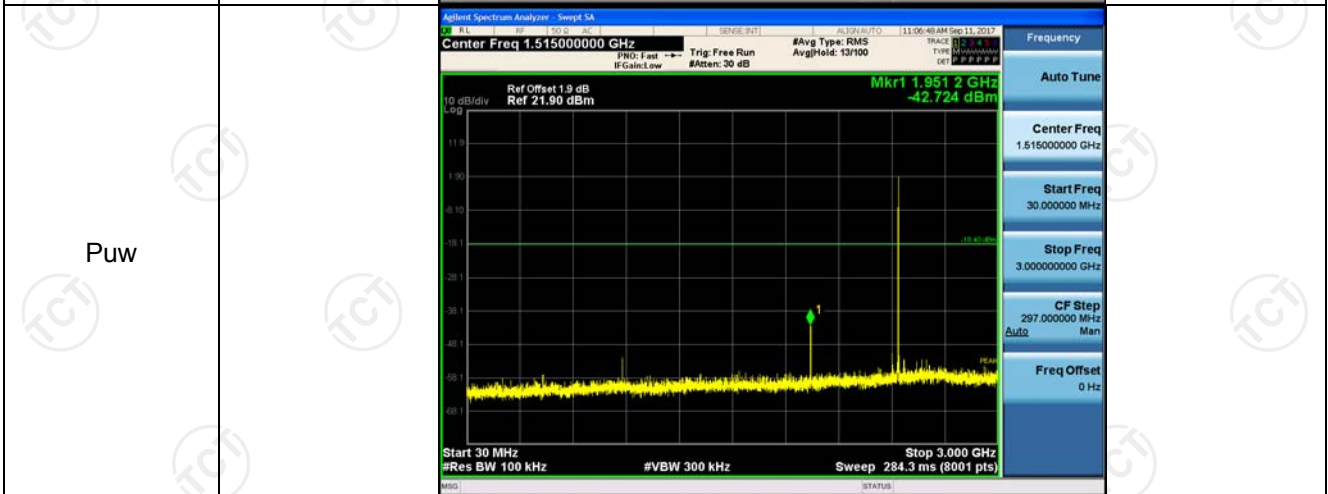
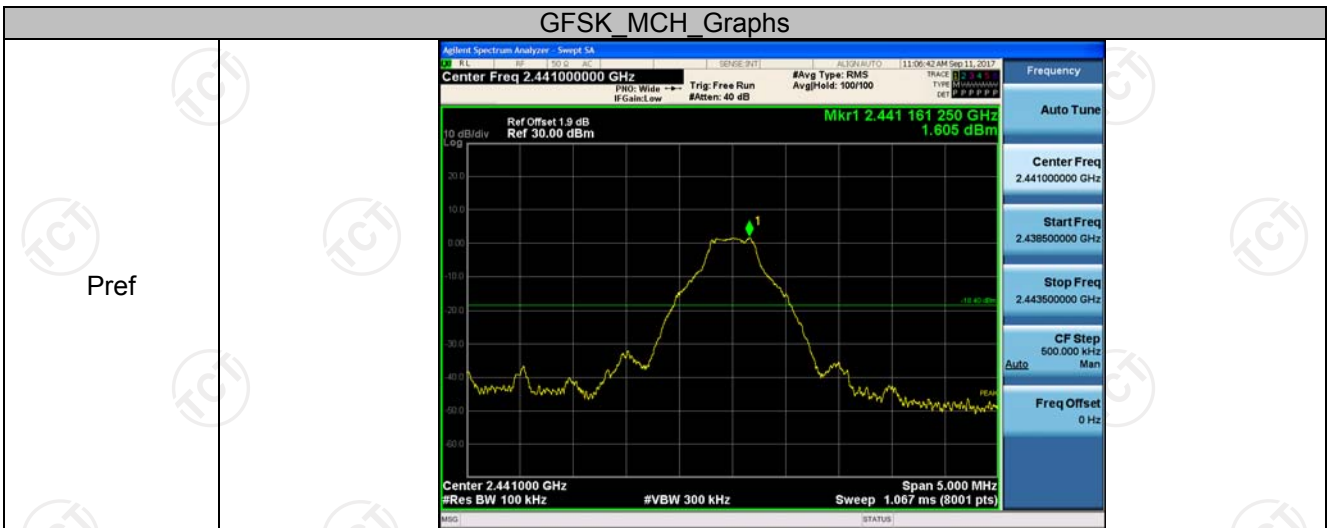
Test Graph

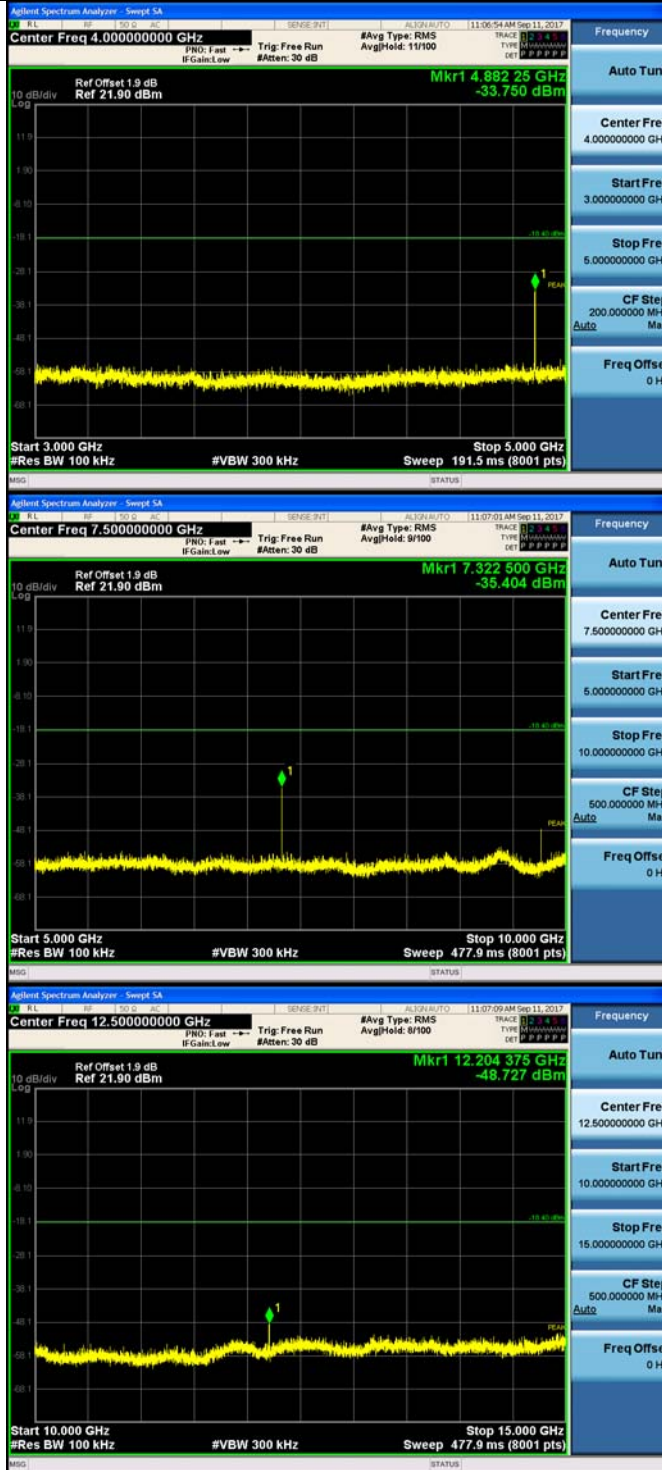


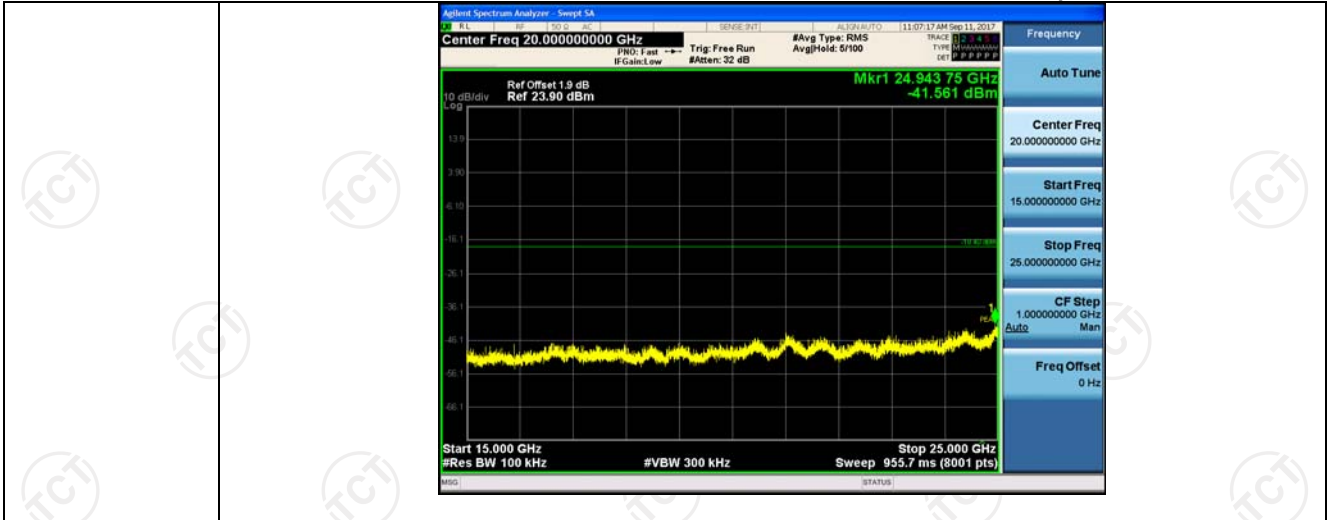




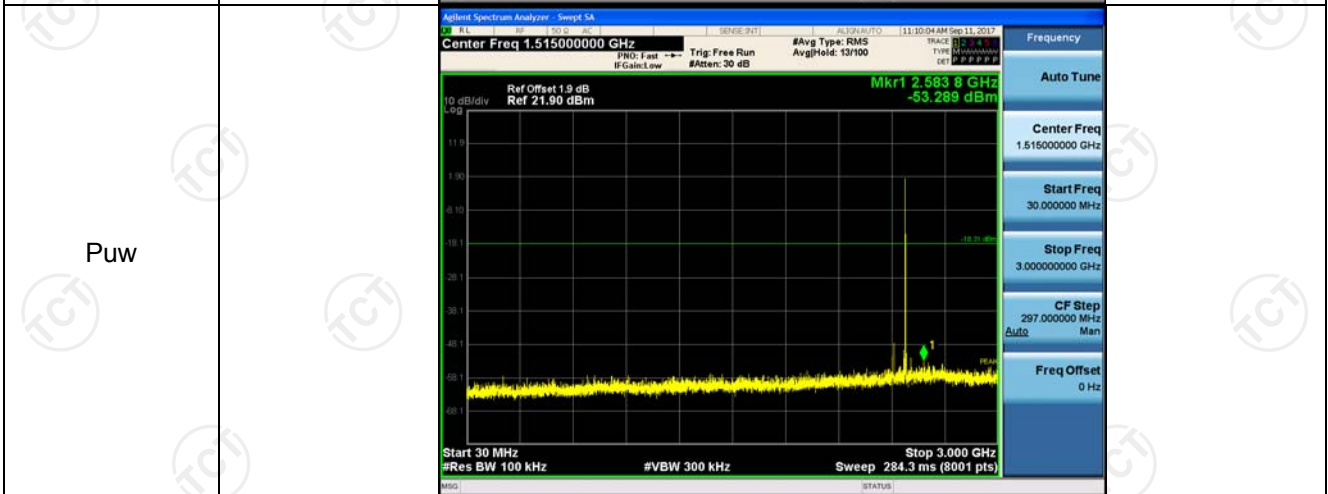
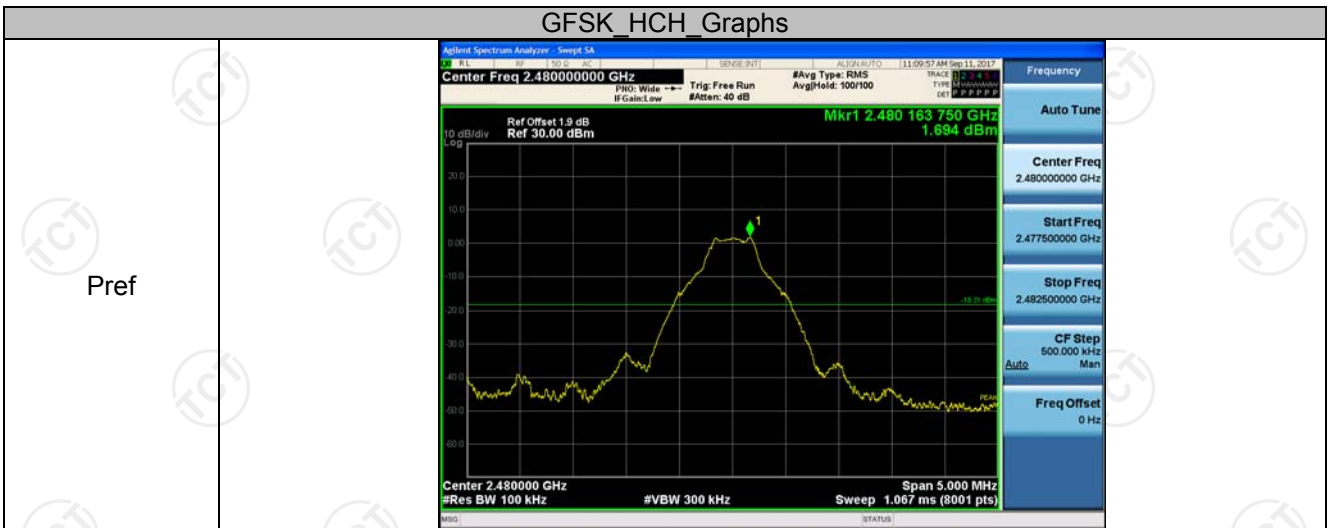
GFSK_MCH_Graphs

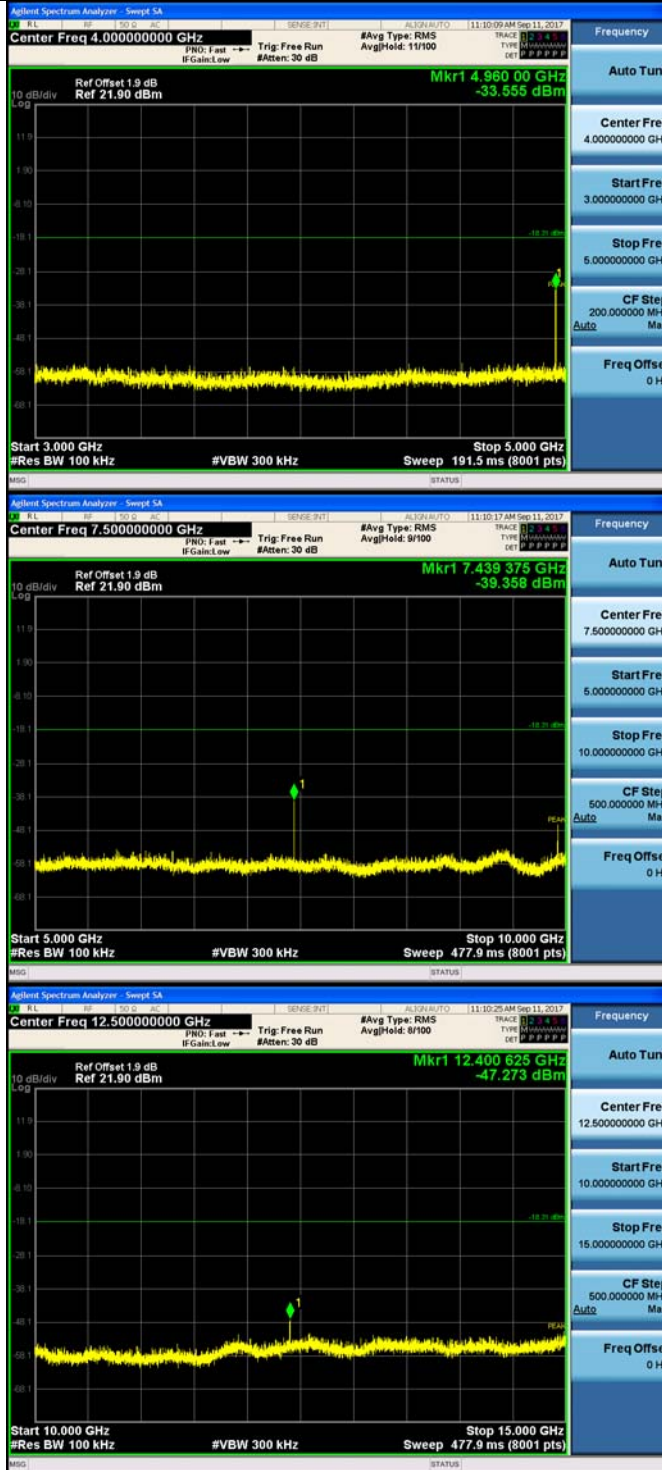


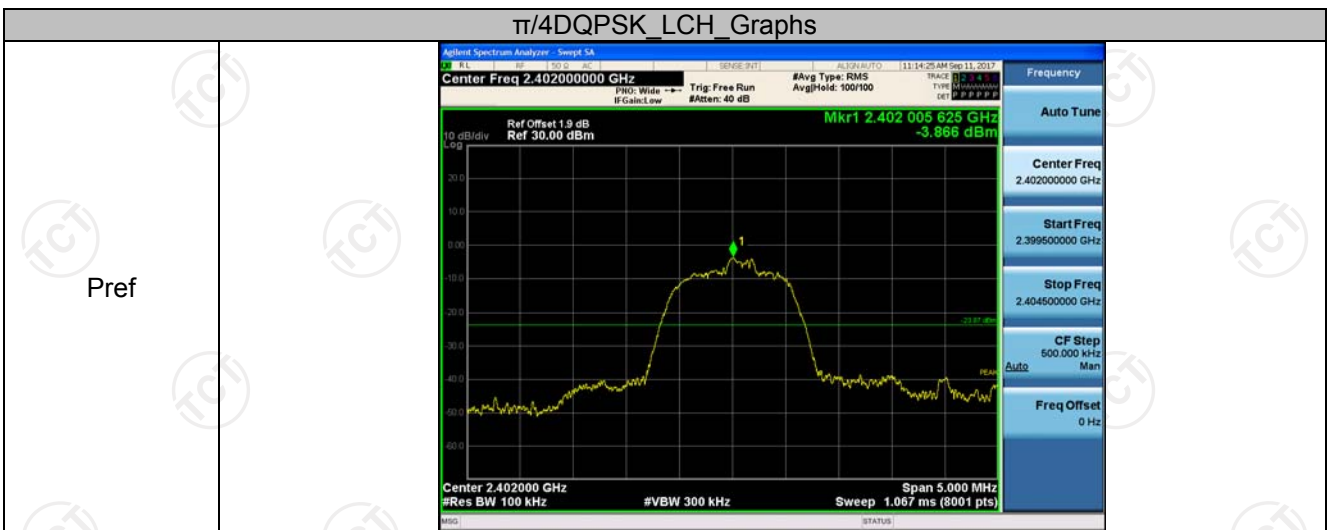
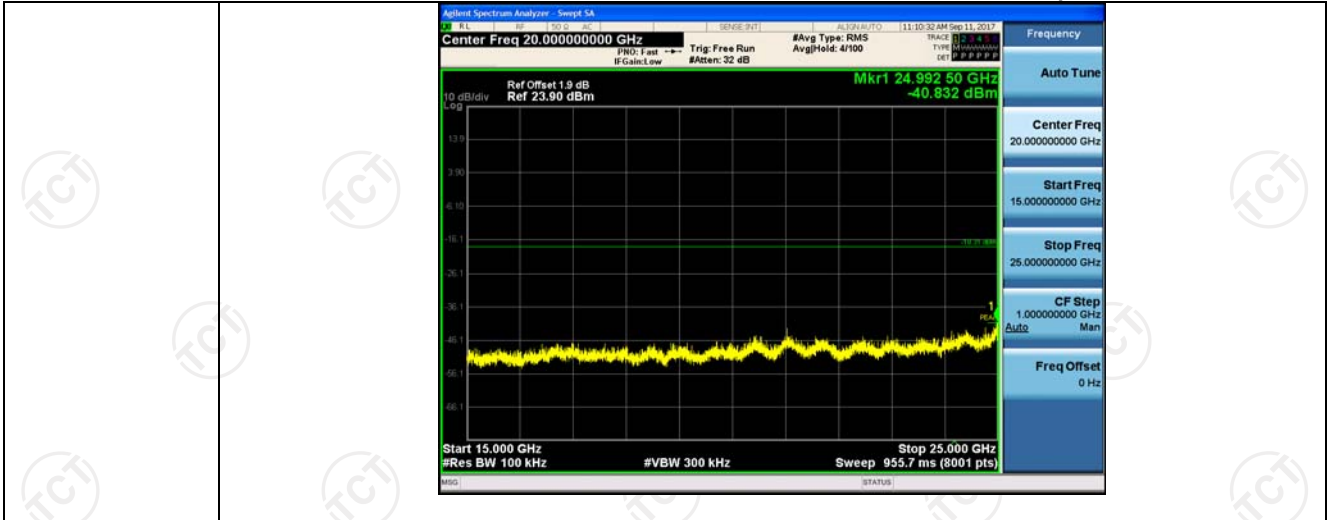




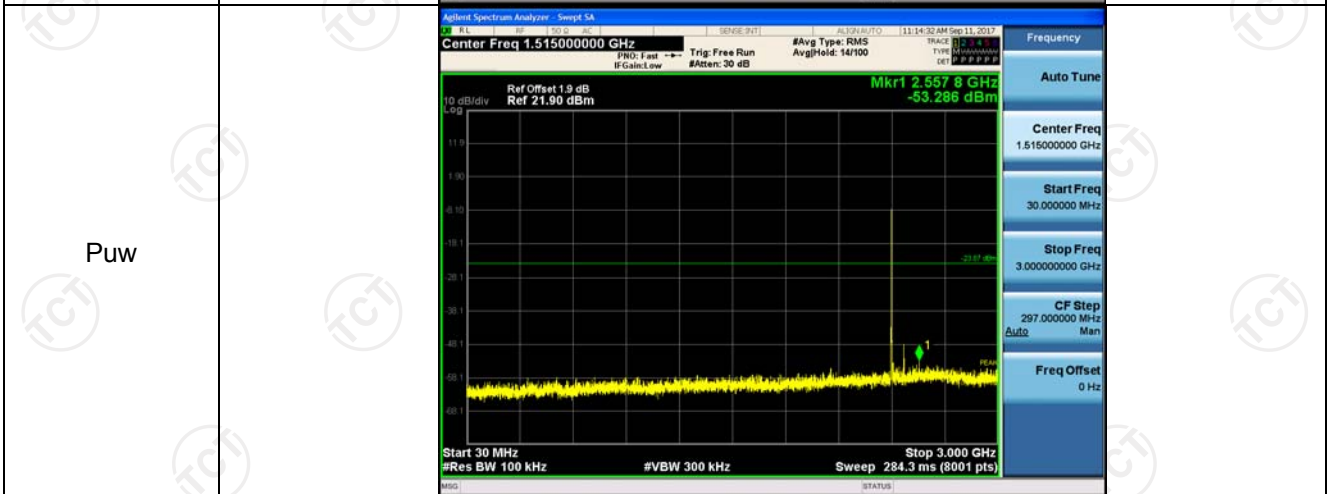
GFSK HCH Graphs



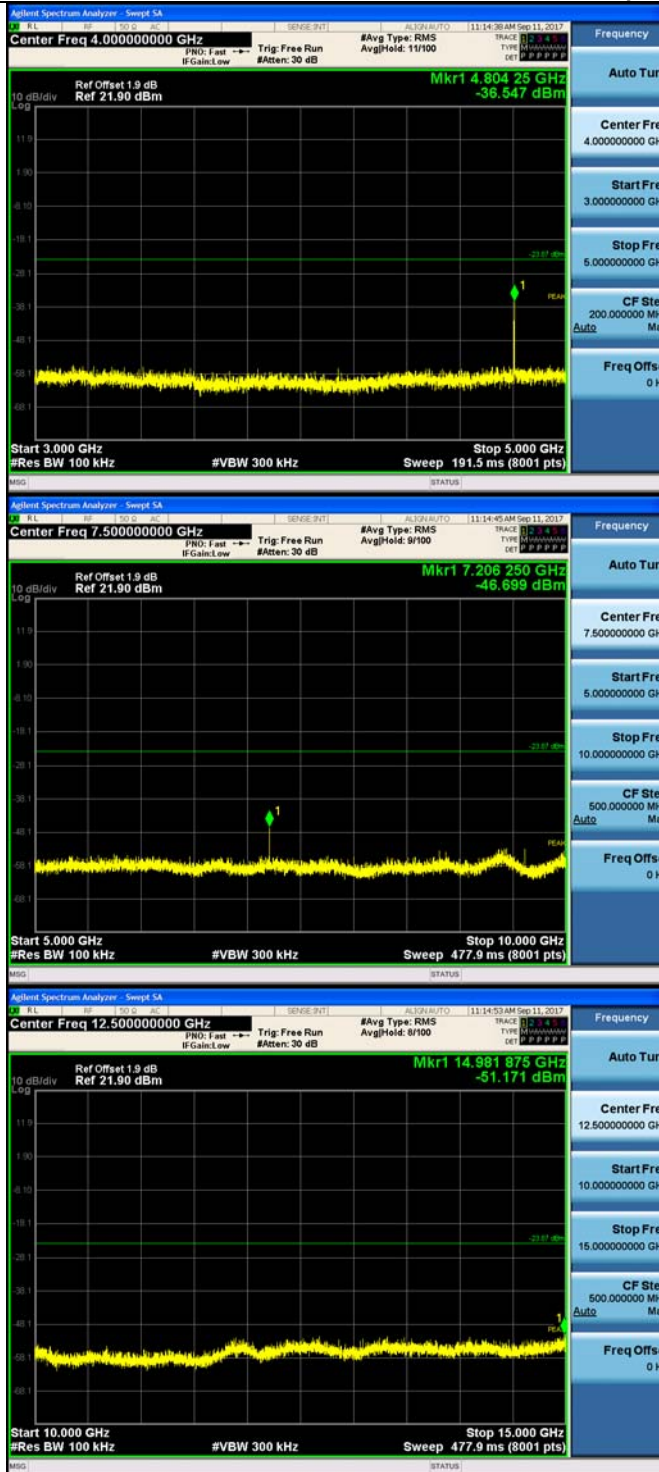


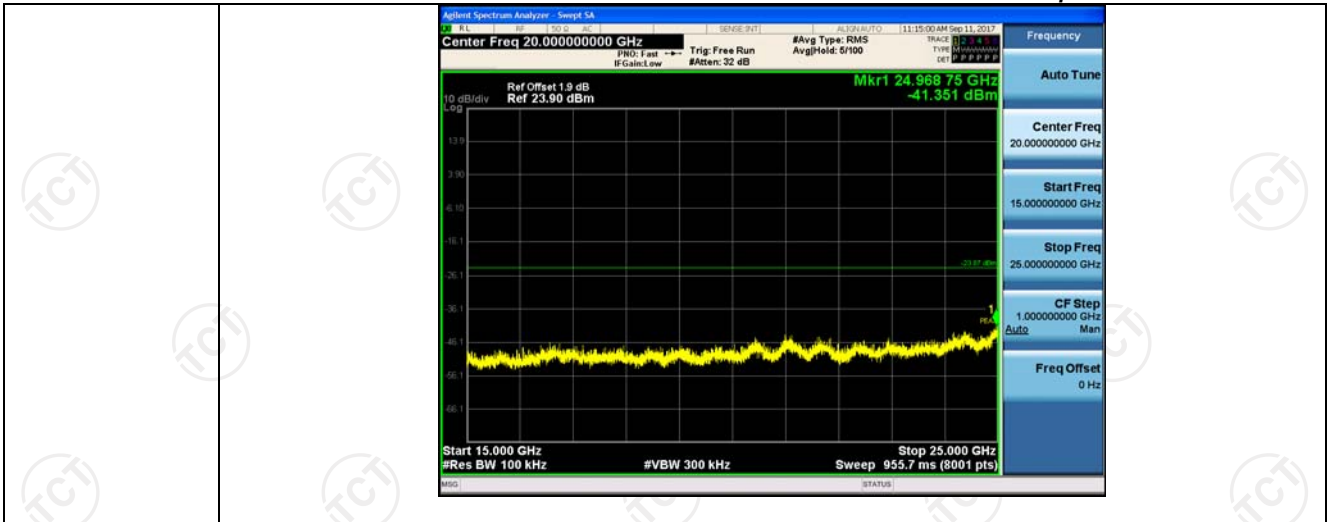


Pref

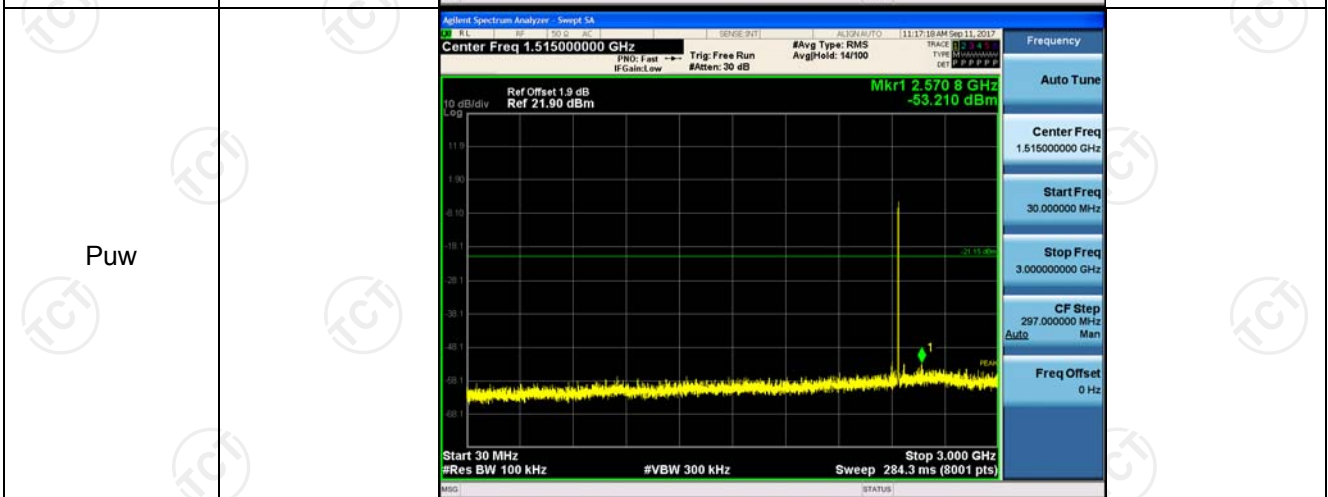
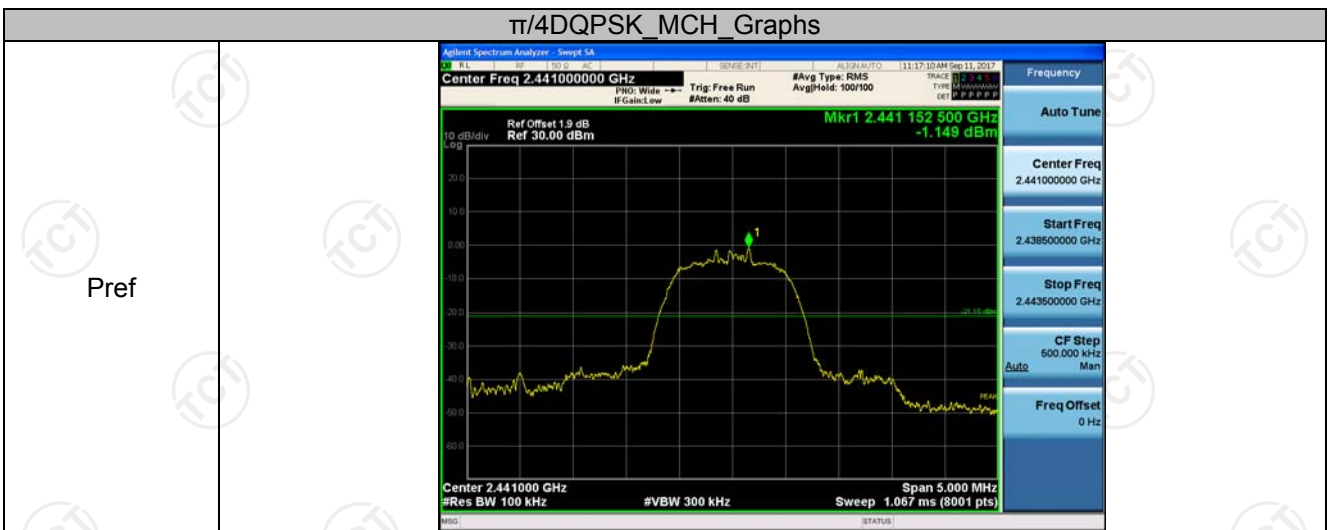


Puw

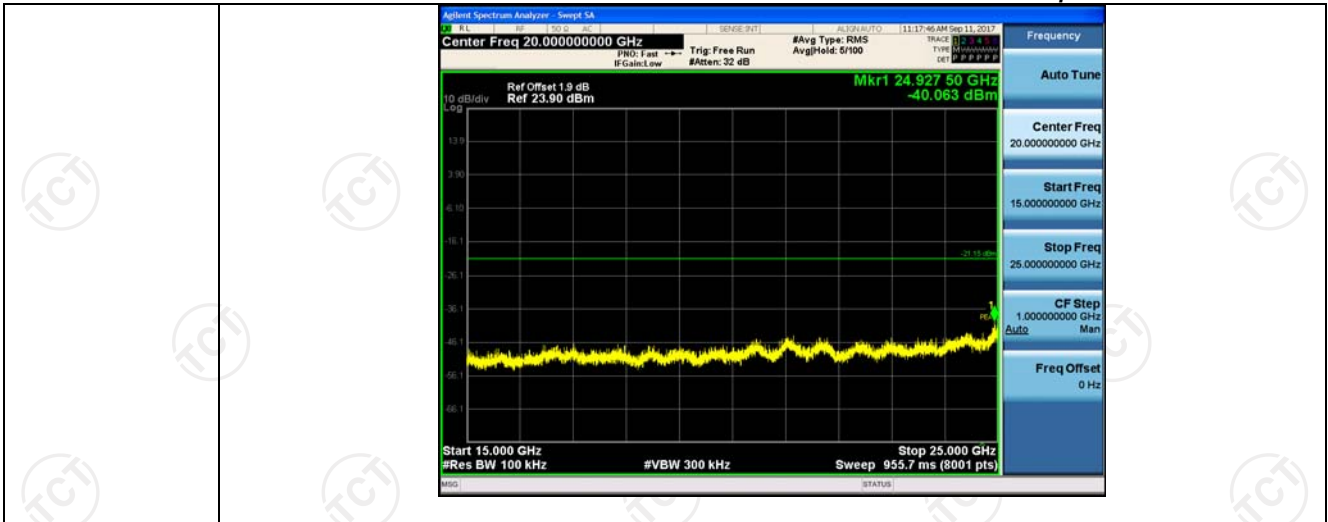




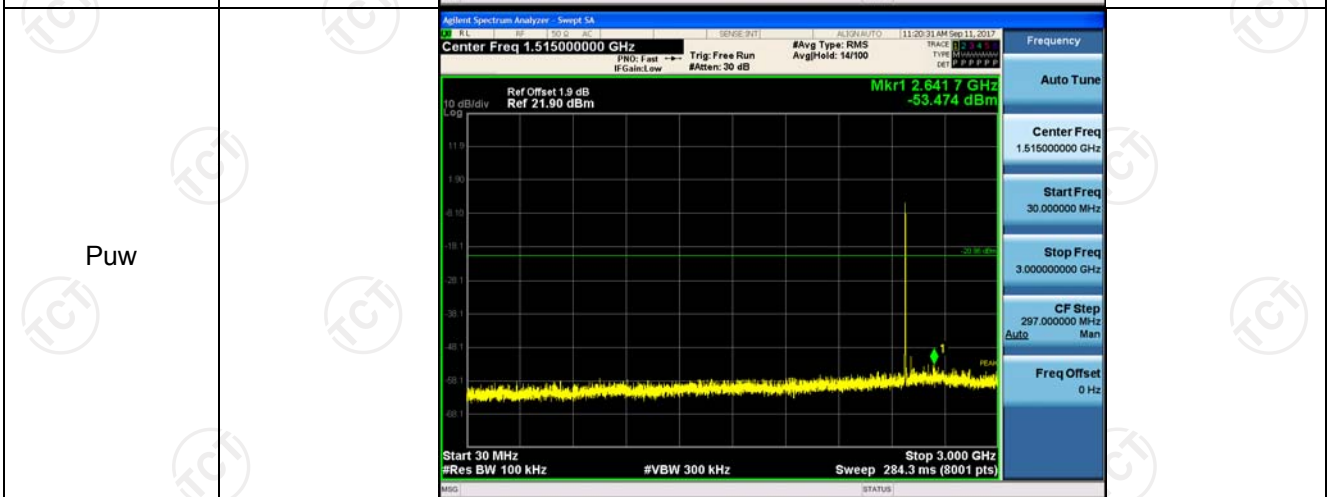
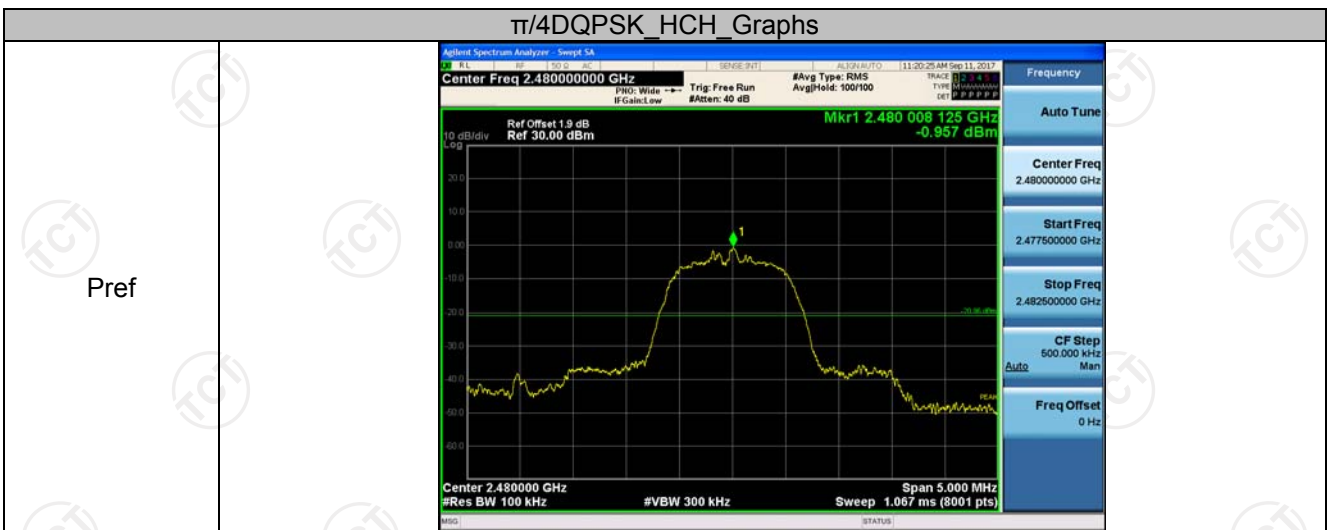
$\pi/4$ DQPSK_MCH_Graphs

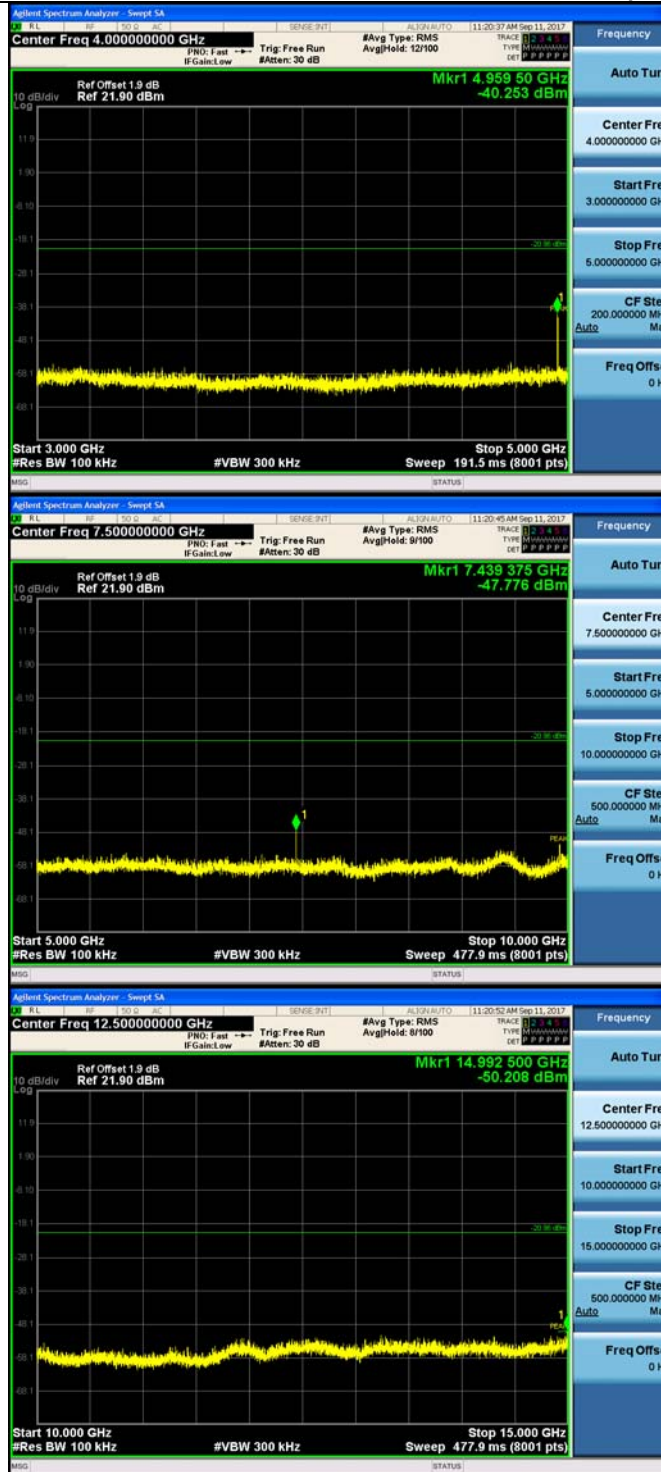


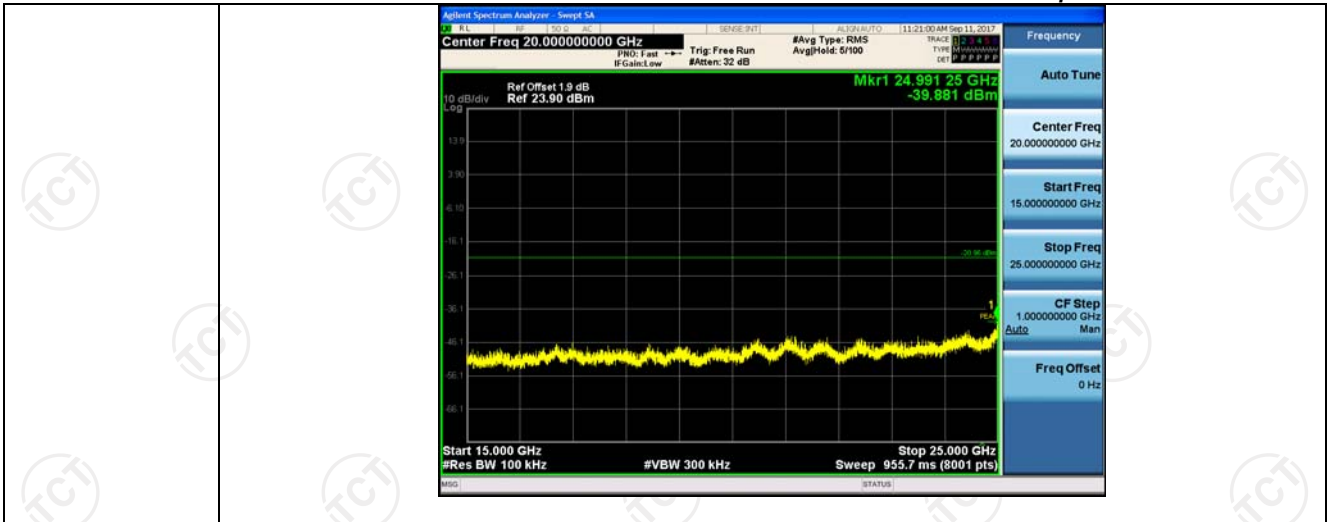




$\pi/4$ DQPSK_HCH_Graphs





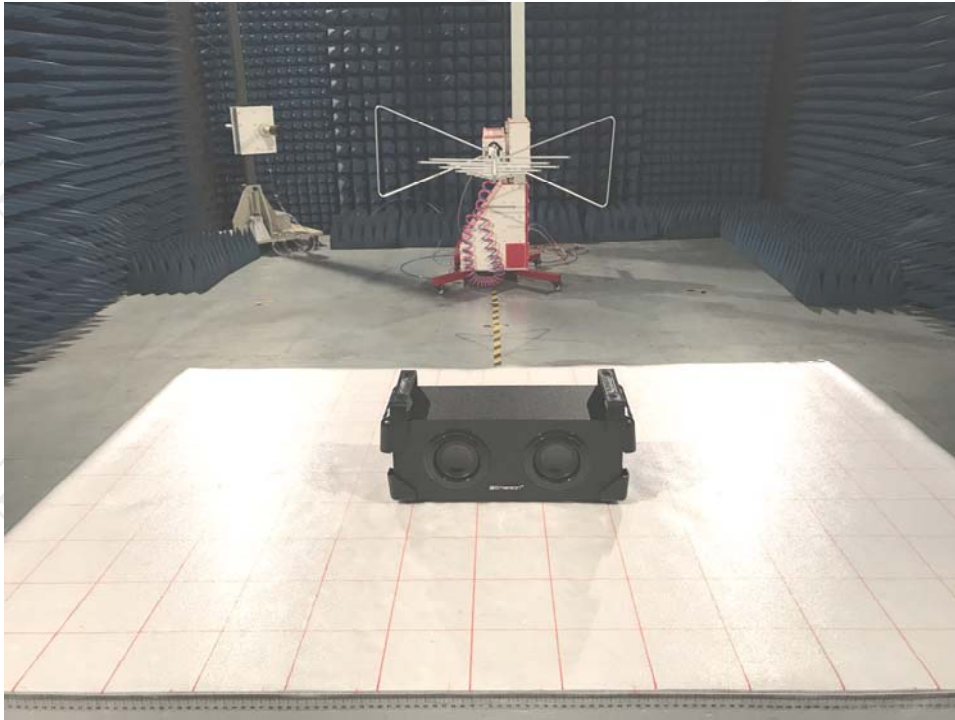


Appendix B: Photographs of Test Setup

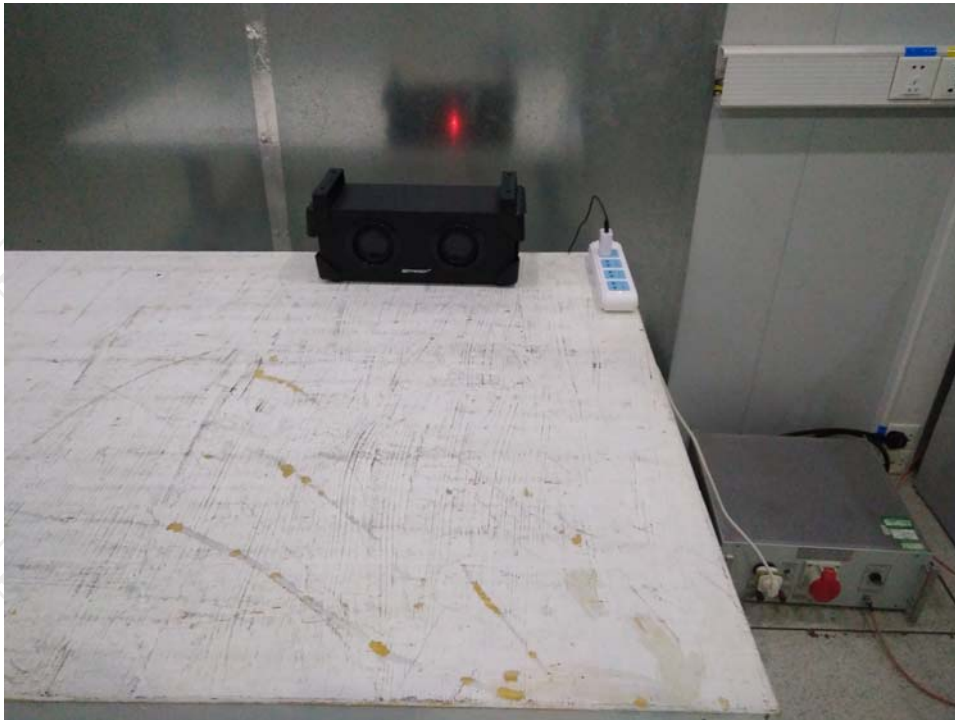
Product: Bluetooth speaker

Model: EBT6003

Radiated Emission



CE



Appendix C: Photographs of EUT
Product: Bluetooth speaker
Model: EBT6003
External Photos

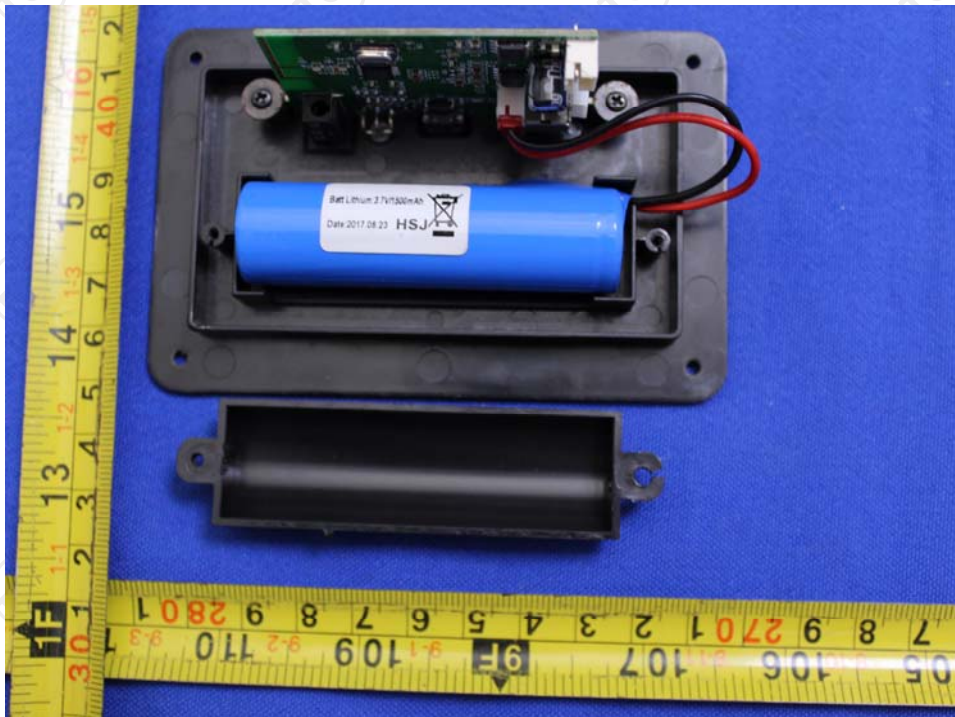
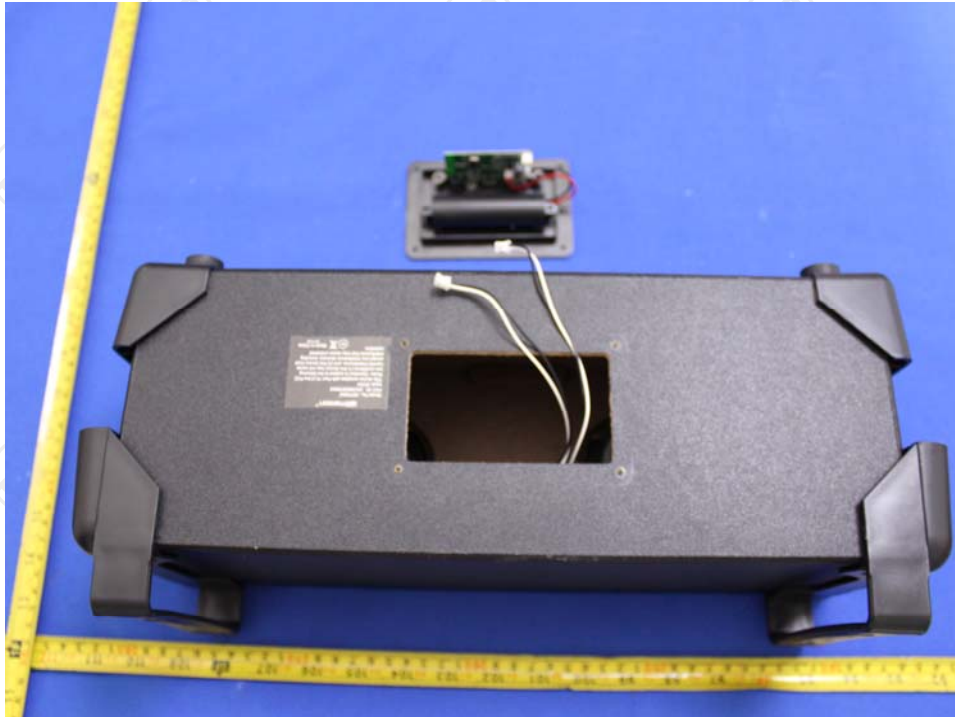


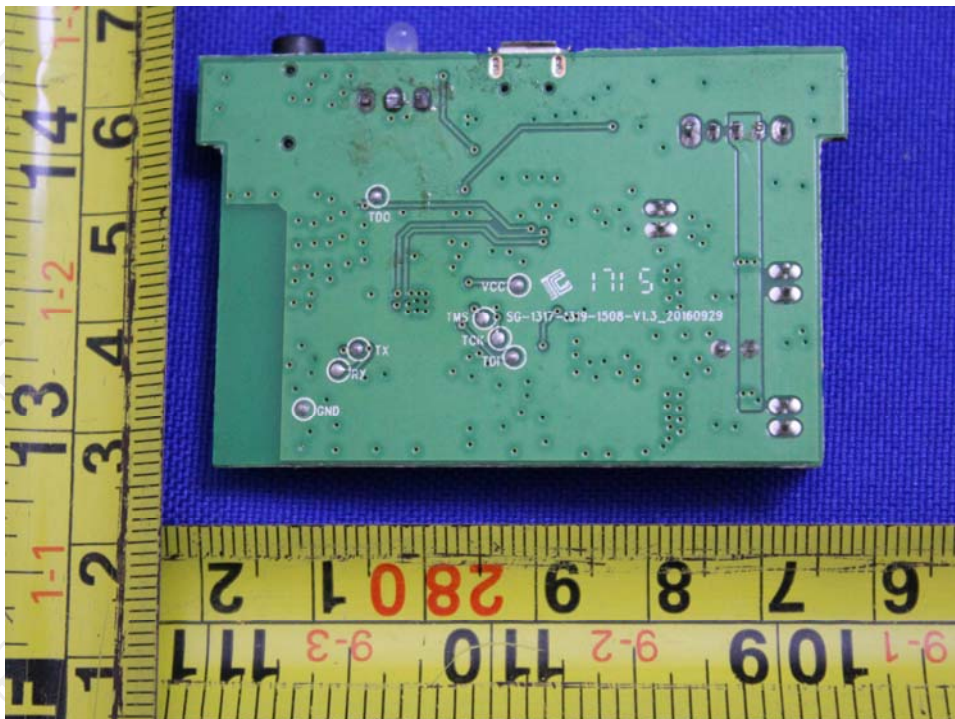
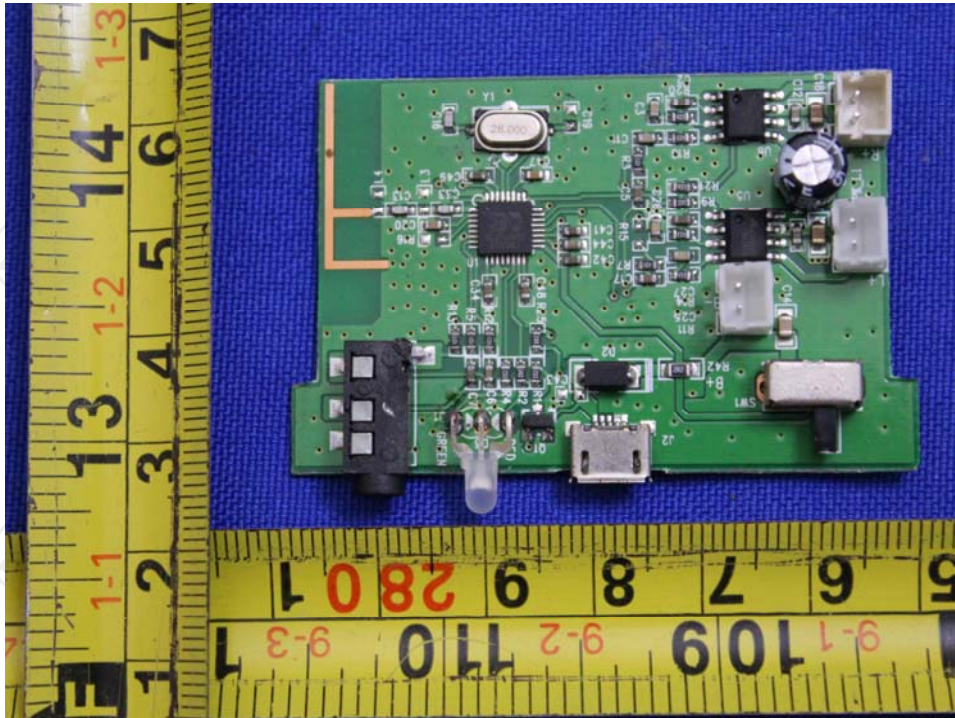






Product: Bluetooth speaker
Model: EBT6003
Internal Photos







*******END OF REPORT*******