



Bluetooth speaker



User Guide EBT6003

In the Box



Rugged Wireless Speaker

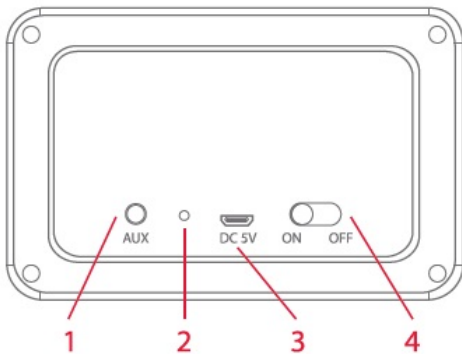


Micro USB Charging Cable

Location of Controls

1. Aux-in Jack
2. LED Indicator
3. DC 5V Charging Port
4. [POWER] Switch

(Back panel)

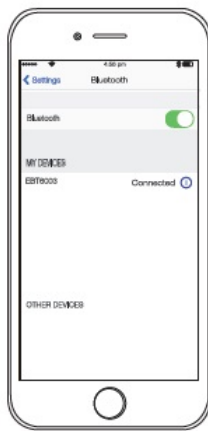


Pairing the Speaker

1. Slide the [POWER] switch on the back panel of the speaker to the ON position. A tone will be heard and the LED indicator will flash RED.
2. Set your Bluetooth-enabled device to search for Bluetooth devices.
3. When your Bluetooth-enabled device finds the speaker, select "EBT6003" from the list of found devices.
4. After a successful pairing, a tone will be heard indicating that the speaker is paired and the LED will flash GREEN.

On an iPhone or Android

- Go to SETTINGS > BLUETOOTH (make sure Bluetooth is turned ON)



The screenshots above are typical of many Bluetooth-enabled devices in the market today, and are used to assist in the explanation of the pairing process. Your Bluetooth-enabled device's interface and interaction with the speaker may differ slightly from the illustrations above.



If required, enter the password 0000. Select OK or Yes to pair the units.

Using the Speaker

Powering ON/OFF

- Turn the speaker ON by sliding the [POWER] switch to the ON position. A tone will be heard, indicating that the speaker is powered ON.
- Turn the speaker OFF by sliding the [POWER] switch to the OFF position. A tone will be heard, indicating that the speaker is powered OFF.

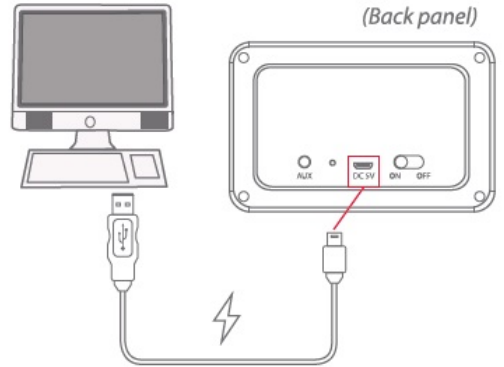
Playing Music

To enjoy music wirelessly on your speaker, make sure that the speaker is properly paired to your Bluetooth-enabled device. If you are pairing the device for the first time, please consult the "Pairing the Speaker" section of this user guide.

All media playback and volume adjustment is controlled through your paired or connected device.

Charging the Speaker

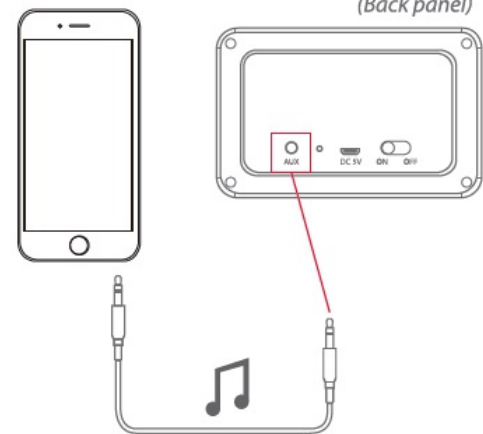
Attach the small end of the micro USB charging cable to the DC 5V charging port on the back panel of the speaker. Connect the large end to the USB port on your computer or other USB charging device. The LED indicator will turn RED while charging and turn off when fully charged.



Make sure you charge the speaker for at least 3 to 4 hours before using it for the first time.

Using as a Wired Speaker

Plug the 3.5mm Aux Cable (not include) into the Aux-in Jack on the back panel of the speaker. Plug the other end into the headphone jack of your mobile or media device. The LED indicator will flash RED while the Aux-in jack is being used.



Connecting the audio cable will override Bluetooth mode. When the cable is disconnected, the speaker will automatically reconnect to the last paired device.

FCC Statement

Changes or modifications not expressly approved by the party responsible for compliance could void the user's authority to operate the equipment.

This equipment has been tested and found to comply with the limits for a Class B digital device, pursuant to Part 15 of the FCC Rules. These limits are designed to provide reasonable protection against harmful interference in a residential installation. This equipment generates uses and can radiate radio frequency energy and, if not installed and used in accordance with the

instructions, may cause harmful interference to radio communications. However, there is no guarantee that interference will not occur in a particular installation. If this equipment does cause harmful interference to radio or television reception, which can be determined by turning the equipment off and on, the user is encouraged to try to correct the interference by one or more of the following measures:

- Reorient or relocate the receiving antenna.
- Increase the separation between the equipment and receiver.
- Connect the equipment into an outlet on a circuit different from that to which the receiver is connected.
- Consult the dealer or an experienced radio/TV technician for help

This device complies with part 15 of the FCC rules. Operation is subject to the following two conditions (1) this device may not cause harmful interference, and (2) this device must accept any interference received, including interference that may cause undesired operation.