

Turn up Procedure.

Product Name: 16 Channel Walkie Talkie

Model: FPCN10A, FPCN20A, FPCN30A, FPCN40A, FPCN50A, FPCN60A, FPCN70A, FPCN80A

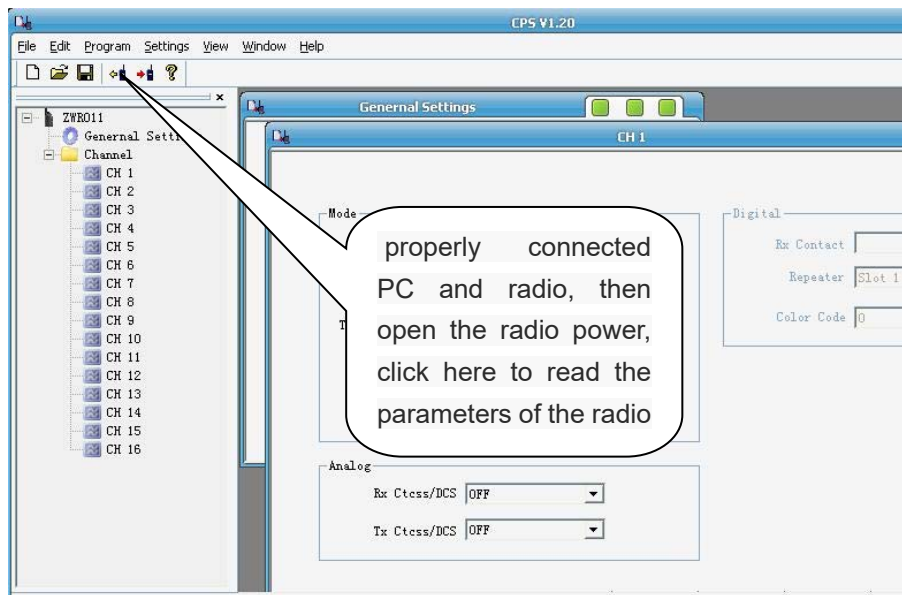
FCC ID: 2AIOQ-FPCN10A

I would like to confirm this device does not have tune up information, because the tune up is fixed by the manufacturer. Therefore, the user cannot tune up the device.

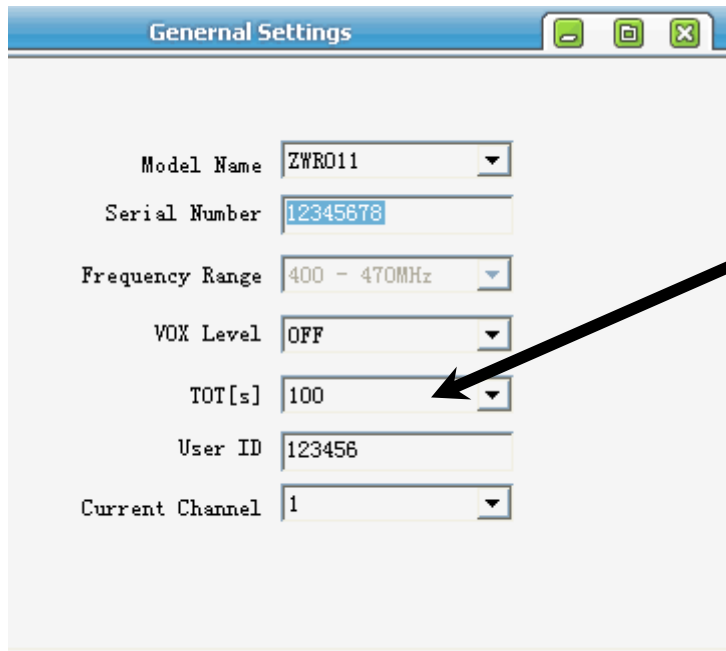
The radio frequency (RF) power detection circuit was set during the product design. The power value detected was sent back to the MCU. The MCU will control the RF power amplification control circuit to ensure the output power within the tolerance. Also manufacture can adjust programming software to meet requirement.

The output power with tolerance is $32.5 \pm 0.5\text{dBm}$ for 12.5kHz Bandwidth;
The output power with tolerance is $32.5 \pm 0.5\text{dBm}$ for 6.25kHz Bandwidth;

1. Open the programming software. As below

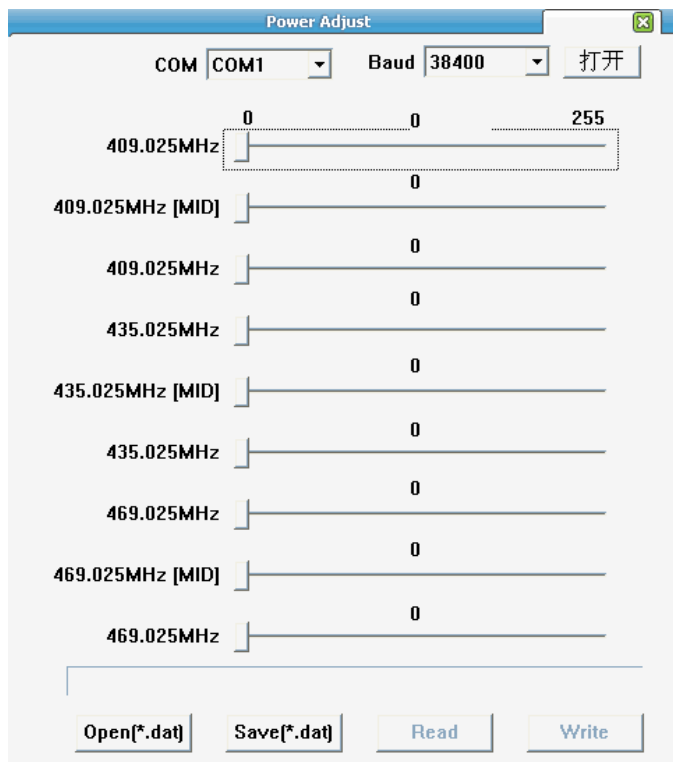


2、Click on Edit(E) , Choice General Setting



Click on Time-out Timer

3、Click Program(P) and choice test and tune you can adjust power parameters to meet FCC Turn up procedure requirement



Dated this July 10, 2017

Agency agreement expiration date: Usually Give 8 - 12 Months

By: Jun Liu

Jun liu

Signature

Printed

Title: Manager

On behalf of : Guangdong Samzuk Technology Development Co., Ltd

Telephone: 0762-3116133