



REPORT No. : SZ18100034S01

## Annex C Plots of System Performance Check

**NOTE:** This document is issued by MORLAB, the test report shall not be reproduced except in full without prior written permission of the company. The test results apply only to the particular sample(s) tested and to the specific tests carried out which is available on request for validation and information confirmed at our website.

**MORLAB**

SHENZHEN MORLAB COMMUNICATIONS TECHNOLOGY Co., Ltd.  
FL1-3, Building A, FeiYang Science Park, No.8 LongChang Road,  
Block67, BaoAn District, ShenZhen , GuangDong Province, P. R. China

Tel: 86-755-36698555

Fax: 86-755-36698525

[Http://www.morlab.cn](http://www.morlab.cn)

E-mail: [service@morlab.cn](mailto:service@morlab.cn)

## System Check\_2450MHz\_Body\_181020

Communication System: UID 0, CW (0); Frequency: 2450 MHz; Duty Cycle: 1:1

Medium: MSL\_2450\_181020 Medium parameters used:  $f = 2450$  MHz;  $\sigma = 2.014$  S/m;  $\epsilon_r = 50.597$ ;  $\rho = 1000$  kg/m<sup>3</sup>

Ambient Temperature : 23.7 °C; Liquid Temperature : 22.1 °C

DASY5 Configuration:

- Probe: ES3DV3 - SN3154; ConvF(4.28, 4.28, 4.28); Calibrated: 2017.10.30;
- Sensor-Surface: 4mm (Mechanical Surface Detection)
- Electronics: DAE4 Sn1516; Calibrated: 2018.07.14
- Phantom: SAM 2; Type: QD000P40CC; Serial: TP:1464
- Measurement SW: DASY52, Version 52.8 (8); SEMCAD X Version 14.6.10 (7331)

**CW 2450/Area Scan (101x101x1):** Interpolated grid: dx=1.200 mm, dy=1.200 mm

Maximum value of SAR (interpolated) = 13.64 W/kg

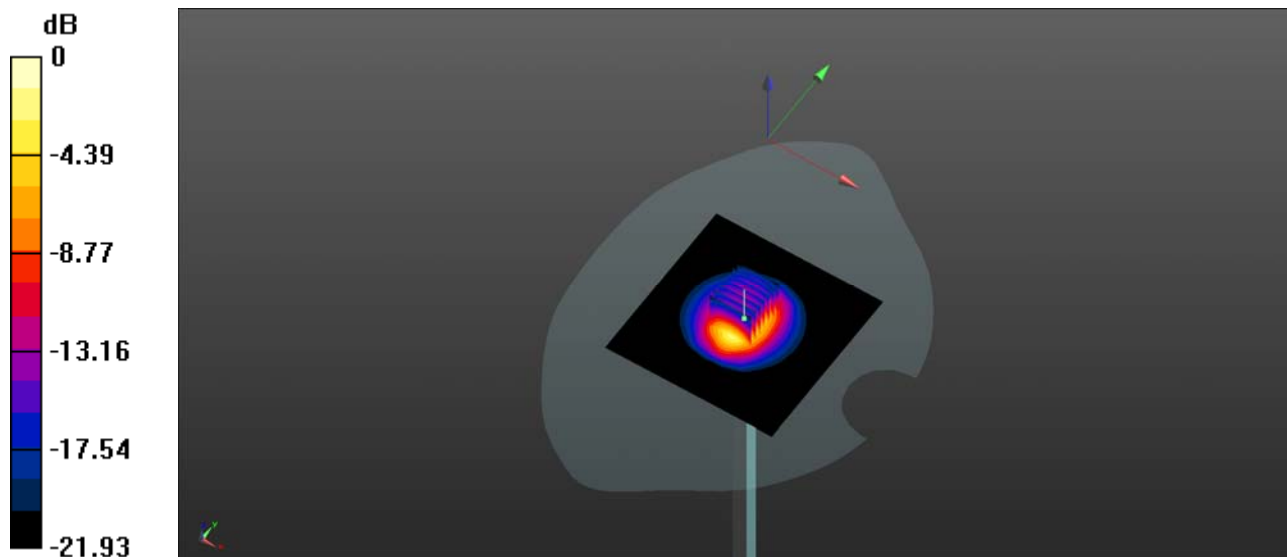
**CW 2450/Zoom Scan (7x7x7)/Cube 0:** Measurement grid: dx=5mm, dy=5mm, dz=5mm

Reference Value = 112.54 V/m; Power Drift = 0.05 dB

Peak SAR (extrapolated) = 26.41 W/kg

**SAR(1 g) = 13.24 W/kg; SAR(10 g) = 6.17 W/kg**

Maximum value of SAR (measured) = 20.41 W/kg



0 dB = 20.41 W/kg