

TEST REPORT

Reference No. : WTS17S0578026E
FCC ID..... : 2AIOC-SW02
Applicant : HANK ELECTRONICS CO., LTD.
Address : Floor 2nd-7th,A8,Hongye Industry City, Lezhujiao, Zhoushi Road,Baoan District, Shenzhen, China
Manufacturer : The same as above
Address : The same as above
Product Name : Smart Switch
Model No. : HKZW-SW02, ZEN15
Standards : FCC CFR47 Part 15 Section 15.249: 2016
Date of Receipt sample.... : May 03, 2017
Date of Test..... : May 04 – 09, 2017
Date of Issue : Jun. 17, 2017
Test Result : Pass
Note..... : This report is for Z-wave Function.

Remarks:

The results shown in this test report refer only to the sample(s) tested, this test report cannot be reproduced, except in full, without prior written permission of the company. The report would be invalid without specific stamp of test institute and the signatures of compiler and approver.

Prepared By:

Waltek Services (Shenzhen) Co., Ltd.

Address: 1/F., Fukangtai Building, West Baima Road, Songgang Street, Baoan District, Shenzhen, Guangdong, China
Tel :+86-755-83551033
Fax:+86-755-83552400

Compiled by:

Robin Zhou

Robin Zhou / Test Engineer

Approved by:



Philo Zhong

Philo Zhong / Manager

2 Contents

	Page
1 COVER PAGE	1
2 CONTENTS	2
3 REVISION HISTORY	3
4 GENERAL INFORMATION	4
4.1 GENERAL DESCRIPTION OF E.U.T.....	4
4.1 DETAILS OF E.U.T.....	4
4.2 STANDARDS APPLICABLE FOR TESTING	4
4.3 TEST FACILITY	4
4.4 Z-WAVE TEST MODE	4
5 EQUIPMENT USED DURING TEST	5
5.1 EQUIPMENTS LIST	5
5.2 MEASUREMENT UNCERTAINTY.....	6
5.3 TEST EQUIPMENT CALIBRATION.....	6
6 TEST SUMMARY	7
7 CONDUCTED EMISSION	8
7.1 E.U.T. OPERATION.....	8
7.2 EUT SETUP	8
7.3 MEASUREMENT DESCRIPTION	8
7.4 TEST RESULT	9
8 RADIATION EMISSION TEST	11
8.1 EUT OPERATION.....	11
8.2 TEST SETUP	12
8.3 SPECTRUM ANALYZER SETUP.....	13
8.4 TEST PROCEDURE.....	14
8.5 FREQUENCY RANGE OF RADIATED MEASUREMENTS.....	15
8.6 TEST RESULT	16
9 PERIODIC OPERATION	18
10 BAND EDGE	19
10.1 TEST PROCEDURE.....	19
10.2 TEST RESULT	19
11 20 DB BANDWIDTH MEASUREMENT	21
11.1 TEST PROCEDURE.....	21
11.2 TEST RESULT	21
12 ANTENNA REQUIREMENT	22
13 PHOTOGRAPHS- MODEL HKZW-SW02 TEST SETUP PHOTOS	23
13.1 PHOTOGRAPH – RADIATION EMISSION	23
13.2 PHOTOGRAPH – CONDUCTED EMISSION TEST SETUP.....	25
14 PHOTOGRAPHS - CONSTRUCTIONAL DETAILS	26
14.1 MODEL HKZW-SW02 - EXTERNAL PHOTOS	26
14.2 MODEL HKZW-SW02- INTERNAL PHOTOS	29

3 Revision History

Test report No.	Date of Receipt sample	Date of Test	Date of Issue	Purpose	Comment	Approved
WTS17S0578026E	May 03, 2017	May 04 - 09, 2017	May 10, 2017	Original	-	Replaced
WTS17S0578026E	May 03, 2017	May 04 - 09, 2017	Jun. 17, 2017	Revision1	Revised the Calibration Due Date of Equipment Used during Test	Valid

4 General Information

4.1 General Description of E.U.T.

Product Name	:	Smart Switch
Model No.	:	HKZW-SW02, ZEN15
Model Differences Description	:	Only the model name is different. The model HKZW-SW02 is the tested sample.
Frequency Range	:	908.42MHz
Antenna Type	:	Internal Integrated Antenna
Antenna Gian	:	0dBi
Type of Modulation	:	FSK

4.1 Details of E.U.T.

Technical Data: Input: 120V~ 60Hz Max 15A
 Output: 120V~ 60Hz Max 15A

4.2 Standards Applicable for Testing

The tests were performed according to following standards:

FCC CFR47 Part 15 Section 15.249: 2016 Telecommunication-RADIO FREQUENCY DEVICES-Intentional Radiators-Operation within the bands 902-928 MHz, 2400-2483.5 MHz, 5725-5875 MHZ, and 24.0-24.25 GHz.

4.3 Test Facility

The test facility is recognized, certified, or accredited by the following organizations:

- **IC – Registration No.:7760A**

Waltek Services(Shenzhen) Co., Ltd. EMC Laboratory has been registered and fully described in a report filed with the Industry Canada. The acceptance letter from the Industry Canada is maintained in our files. Registration number 7760A, October 15, 2015.

- **FCC Test Site – Registration No.: 328995**

Waltek Services(Shenzhen) Co., Ltd. EMC Laboratory has been registered and fully described in a report filed with the (FCC) Federal Communications Commission. The acceptance letter from the FCC is maintained in our files. Registration 328995, December 3, 2014

4.4 Z-wave Test Mode

All test mode(s) and condition(s) mentioned were considered and evaluated respectively by performing full tests.

Test mode	Test channel
Transmitting	908.42MHz

5 Equipment Used during Test

5.1 Equipments List

Conducted Emissions Test Site						
Item	Equipment	Manufacturer	Model No.	Serial No.	Last Calibration Date	Calibration Due Date
1.	EMI Test Receiver	R&S	ESCI	101155	Sep.12, 2016	Sep.11, 2017
2.	LISN	SCHWARZBECK	NSLK 8128	8128-289	Sep.12, 2016	Sep.11, 2017
3.	Limitter	York	MTS-IMP-136	261115-001-0024	Sep.12, 2016	Sep.11, 2017
4.	Cable	LARGE	RF300	-	Sep.12, 2016	Sep.11, 2017
3m Semi-anechoic Chamber for Radiation Emissions Test site						
Item	Equipment	Manufacturer	Model No.	Serial No.	Last Calibration Date	Calibration Due Date
1	Spectrum Analyzer	R&S	FSP	100091	Apr.29, 2017	Apr.28, 2018
2	Amplifier	Agilent	8447D	2944A10178	Jan.12, 2017	Jan.11, 2018
3	Active Loop Antenna	Beijing Dazhi	ZN30900A	0703	Oct.17, 2016	Oct.16, 2017
4	Trilog Broadband Antenna	SCHWARZBECK	VULB9163	33 6	Apr.09, 2017	Apr.08, 2018
5	Coaxial Cable (below 1GHz)	Top	TYPE16(13M)	-	Sep.12, 2016	Sep.11, 2017
6	Broad-band Horn Antenna	SCHWARZBECK	BBHA 9120 D	667	Apr.09, 2017	Apr.08, 2018
7	Broadband Preamplifier	COMPLIANCE DIRECTION	PAP-1G18	2004	Apr.09, 2017	Apr.08, 2018
8	Coaxial Cable (above 1GHz)	Top	1GHz-18GHz	EW02014-7	Apr.09, 2017	Apr.08, 2018
9	Test Receiver	R&S	ESCI	101296	Apr.09, 2017	Apr.08, 2018
10	Trilog Broadband Antenna	SCHWARZBECK	VULB9160	9160-3325	Apr.09, 2017	Apr.08, 2018
11	Amplifier	ANRITSU	MH648A	M43381	Apr.09, 2017	Apr.08, 2018
12	Cable	HUBER+SUHNER	CBL2	525178	Apr.09, 2017	Apr.08, 2018
RF Conducted Testing						
Item	Equipment	Manufacturer	Model No.	Serial No.	Last Calibration Date	Calibration Due Date
1.	EMC Analyzer (9k~26.5GHz)	Agilent	E7405A	MY45114943	Sep.12, 2016	Sep.11, 2017
2.	Spectrum Analyzer (9k-6GHz)	R&S	FSL6	100959	Sep.12, 2016	Sep.11, 2017
3.	Signal Analyzer (9k~26.5GHz)	Agilent	N9010A	MY50520207	Sep.12, 2016	Sep.11, 2017

5.2 Measurement Uncertainty

Parameter	Uncertainty
Radio Frequency	$\pm 1 \times 10^{-6}$
RF Power	± 1.0 dB
RF Power Density	± 2.2 dB
Radiated Spurious Emissions test	± 5.03 dB (Bilog antenna 30M~1000MHz)
	± 5.47 dB (Horn antenna 1000M~25000MHz)

5.3 Test Equipment Calibration

All the test equipments used are valid and calibrated by CEPREI Certification Body that address is No.110 Dongguan Zhuang RD. Guangzhou, P.R.China.

6 Test Summary

Test Items	Test Requirement	Result
Conducted Emissions	15.207	C
Radiated Emission	15.249(a) 15.209 15.205(a)	C
Periodic Operation	15.35(c)	C
Band Edge	15.249 15.205 15.209	C
20dB Bandwidth	15:215(c)	C
Antenna Requirement	15.203	C
Note: C=Compliance; NC=Not Compliance; NT=Not Tested; N/A=Not Applicable.		

7 Conducted Emission

Test Requirement:	FCC CFR 47 Part 15 Section 15.207
Test Method:	ANSI C63.10:2013;ANSI C63.4:2014
Frequency Range:	150kHz to 30MHz
Class/Severity:	Class B
Limit:	66-56 dB μ V between 0.15MHz & 0.5MHz 56 dB μ V between 0.5MHz & 5MHz 60 dB μ V between 5MHz & 30MHz
Detector:	Peak for pre-scan (9kHz Resolution Bandwidth)
Test Result:	<input checked="" type="checkbox"/> Pass <input type="checkbox"/> not applicable (Remark)

7.1 E.U.T. Operation

Operating Environment :

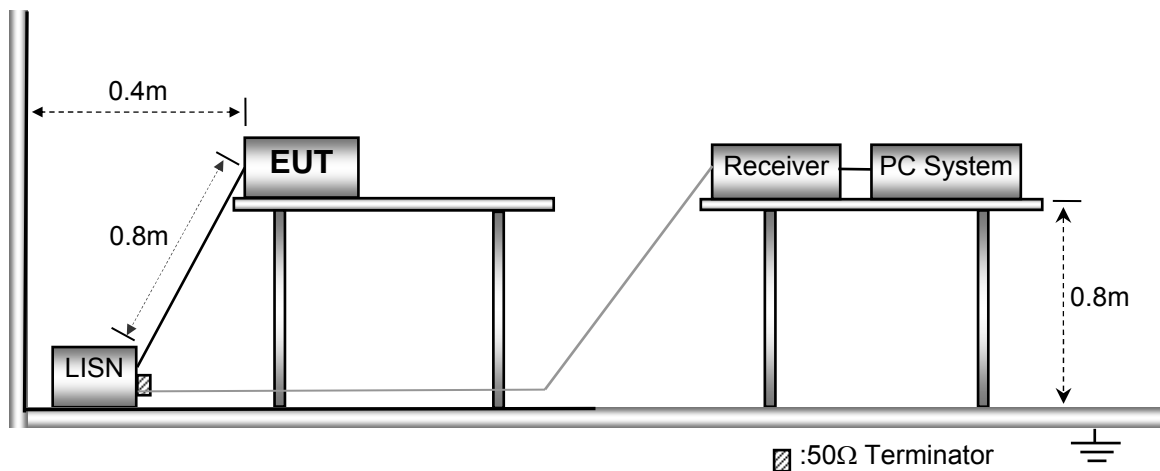
Temperature:	25.5 °C
Humidity:	51 % RH
Atmospheric Pressure:	101.2kPa

EUT Operation :

The test was performed in Transmitting mode, the test data were shown in the report.

7.2 EUT Setup

The conducted emission tests were performed using the setup accordance with the ANSI C63.10:2013

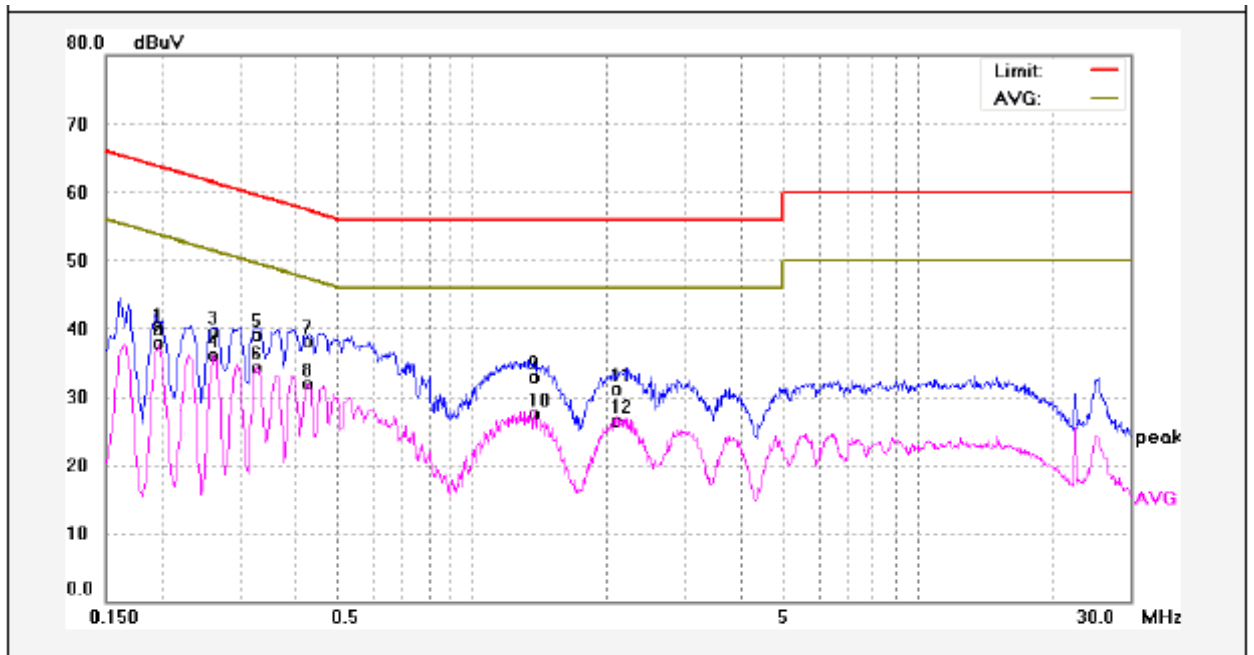


7.3 Measurement Description

The maximised peak emissions from the EUT was scanned and measured for both the Live and Neutral Lines. Quasi-peak & average measurements were performed if peak emissions were within 6dB of the average limit line.

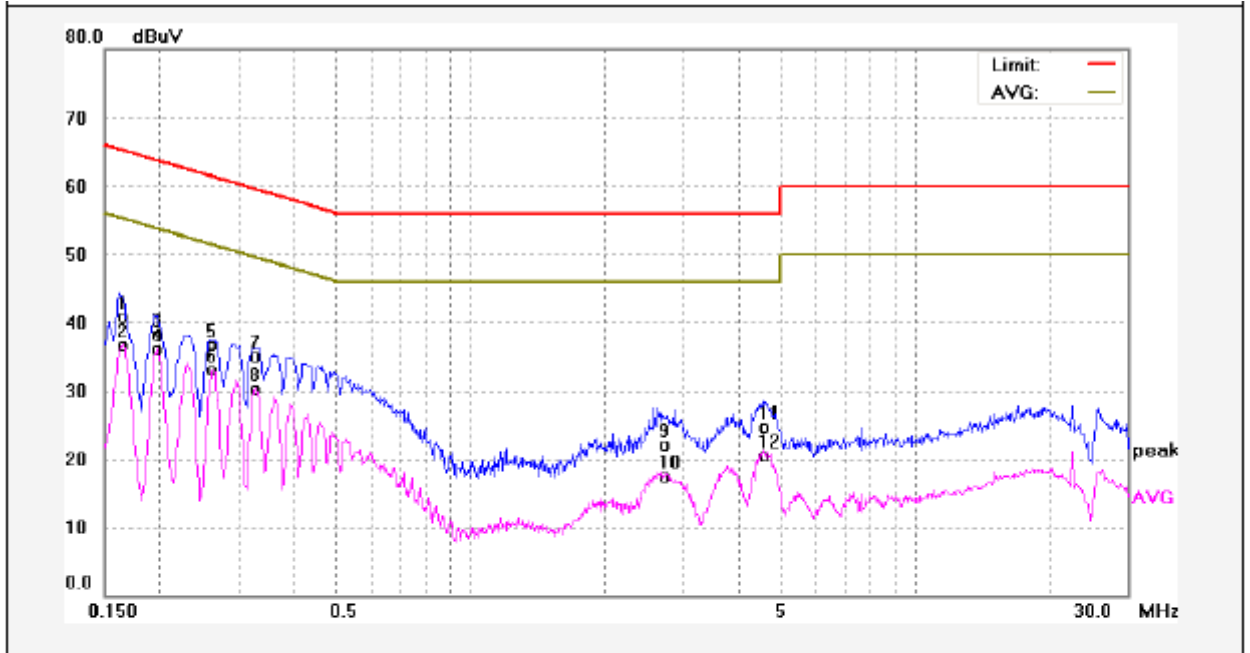
7.4 Test Result

Live line:



No.	Freq. (MHz)	Reading (dBuV)	Factor (dB)	Result (dBuV)	Limit dBuV	Margin (dB)	Detector	Remark
1	0.1980	30.23	9.62	39.85	63.69	-23.84	QP	
2	0.1980	28.20	9.62	37.82	53.69	-15.87	AVG	
3	0.2620	29.82	9.64	39.46	61.36	-21.90	QP	
4	0.2620	26.42	9.64	36.06	51.36	-15.30	AVG	
5	0.3300	29.54	9.63	39.17	59.45	-20.28	QP	
6	0.3300	24.70	9.63	34.33	49.45	-15.12	AVG	
7	0.4260	28.51	9.64	38.15	57.33	-19.18	QP	
8	0.4260	22.17	9.64	31.81	47.33	-15.52	AVG	
9	1.3779	23.11	9.89	33.00	56.00	-23.00	QP	
10	1.3779	17.58	9.89	27.47	46.00	-18.53	AVG	
11	2.1020	21.19	9.95	31.14	56.00	-24.86	QP	
12	2.1020	16.57	9.95	26.52	46.00	-19.48	AVG	

Neutral line:



No.	Freq. (MHz)	Reading (dBuV)	Factor (dB)	Result (dBuV)	Limit dBuV	Margin (dB)	Detector	Remark
1	0.1660	31.23	9.64	40.87	65.15	-24.28	QP	
2	0.1660	27.06	9.64	36.70	55.15	-18.45	AVG	
3	0.1980	28.69	9.62	38.31	63.69	-25.38	QP	
4	0.1980	26.54	9.62	36.16	53.69	-17.53	AVG	
5	0.2620	27.02	9.64	36.66	61.36	-24.70	QP	
6	0.2620	23.54	9.64	33.18	51.36	-18.18	AVG	
7	0.3300	25.57	9.63	35.20	59.45	-24.25	QP	
8	0.3300	20.64	9.63	30.27	49.45	-19.18	AVG	
9	2.7300	12.22	9.94	22.16	56.00	-33.84	QP	
10	2.7300	7.53	9.94	17.47	46.00	-28.53	AVG	
11	4.5700	14.74	10.00	24.74	56.00	-31.26	QP	
12	4.5700	10.41	10.00	20.41	46.00	-25.59	AVG	

8 Radiation Emission Test

Test Requirement: FCC Part15 Paragraph 15.249&15.209&15.205

Test Method: ANSI 63.10: 2013;ANSI C63.4:2014

Measurement Distance: 3m

Test Result: Pass Fail

15.249(a)Limit:

Fundamental frequency	Field strength of fundamental		Field strength of harmonics	
	mV/m	dBuV/m	uV/m	dBuV/m
902-928 MHz	50	94	500	54
2400-2483.5 MHz	50	94	500	54
5725-5875 MHz	50	94	500	54
24.0-24.25 GHz	250	108	2500	68

15.209 Limit:

Frequency (MHz)	Field Strength		Field Strength Limit at 3m Measurement Dist	
	uV/m	Distance (m)	uV/m	dBuV/m
0.009 ~ 0.490	2400/F(kHz)	300	10000 * 2400/F(kHz)	20log ^{(2400/F(kHz))} + 80
0.490 ~ 1.705	24000/F(kHz)	30	100 * 24000/F(kHz)	20log ^{(24000/F(kHz))} + 40
1.705 ~ 30	30	30	100 * 30	20log ⁽³⁰⁾ + 40(29.54+40)
30 ~ 88	100	3	100	20log ⁽¹⁰⁰⁾ =(40)
88 ~ 216	150	3	150	20log ⁽¹⁵⁰⁾ =(43.5)
216 ~ 960	200	3	200	20log ⁽²⁰⁰⁾ =(46)
Above 960	500	3	500	20log ⁽⁵⁰⁰⁾ =(54)

Note: RF Voltage(dBuV)=20 log₁₀ RF Voltage(uV)

8.1 EUT Operation

Operating Environment :

Temperature: 23.5 °C

Humidity: 51.1 % RH

Atmospheric Pressure: 101.2kPa

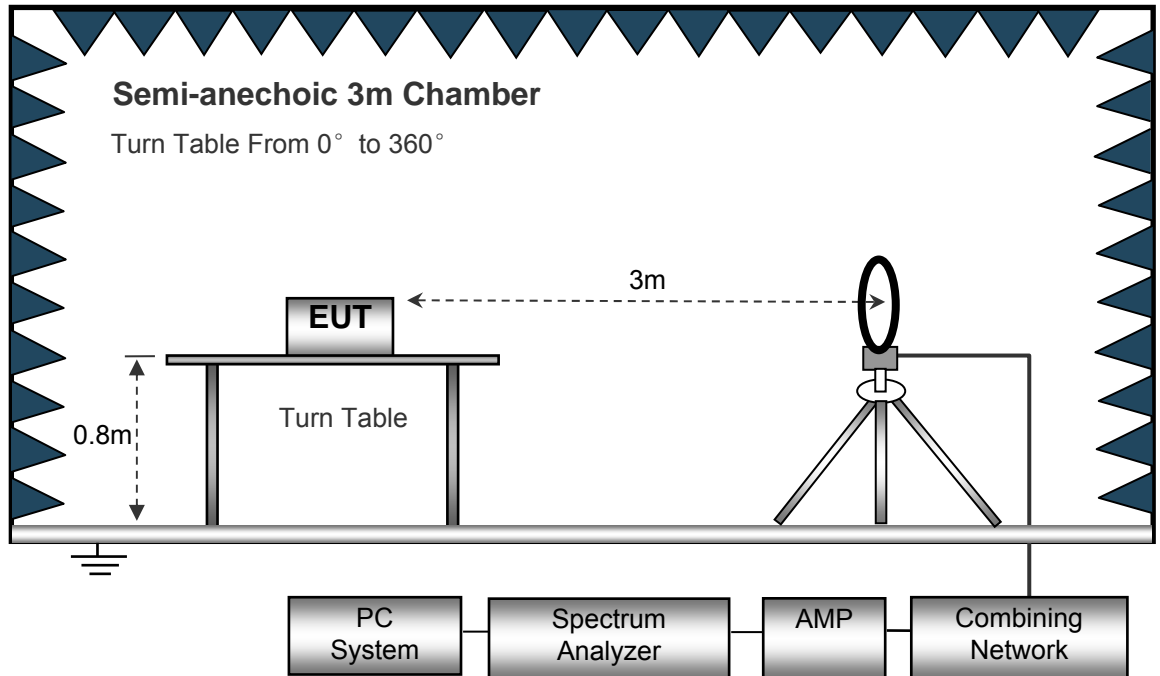
EUT Operation :

The test was performed in Transmitting mode, the test data were shown in the report.

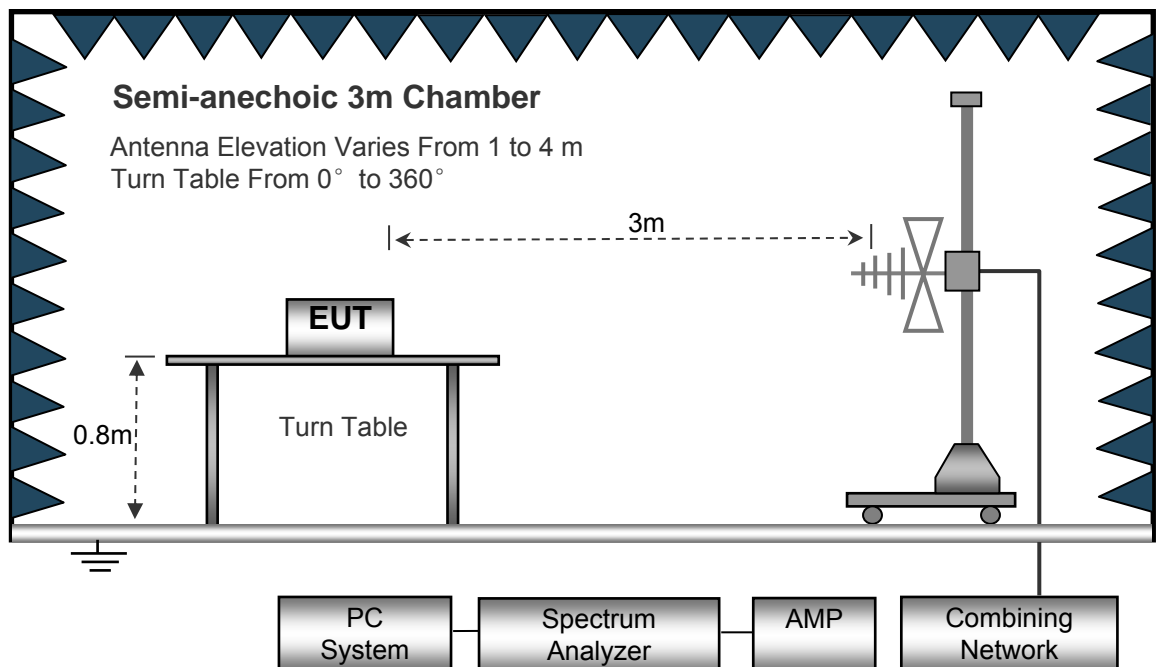
8.2 Test Setup

The radiated emission tests were performed in the 3m Semi- Anechoic Chamber test site, using the setup accordance with the ANSI C63.10: 2013.

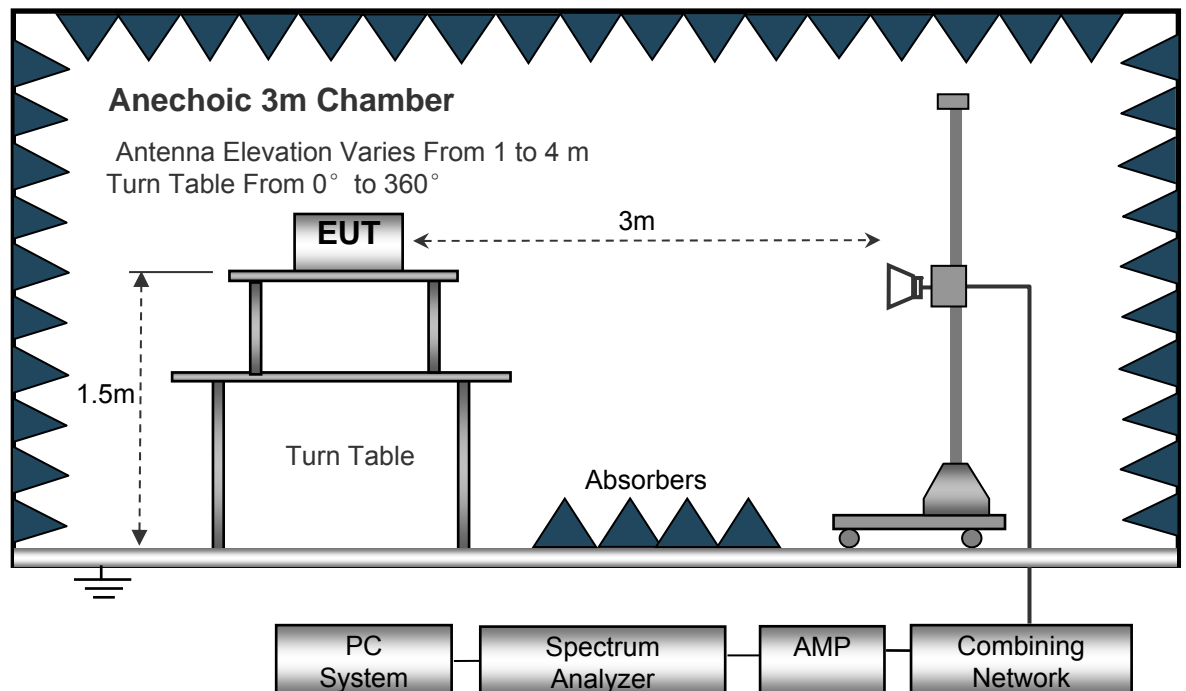
The test setup for emission measurement below 30MHz.



The test setup for emission measurement from 30MHz to 1GHz.



The test setup for emission measurement above 1 GHz.



8.3 Spectrum Analyzer Setup

Below 30MHz

Sweep Speed Auto
 IF Bandwidth..... 10kHz
 Video Bandwidth 10kHz
 Resolution Bandwidth 10kHz

30MHz ~ 1GHz

Sweep Speed Auto
 Detector PK
 Resolution Bandwidth..... 100kHz
 Video Bandwidth 300kHz

Above 1GHz

Sweep Speed Auto
 Detector PK
 Resolution Bandwidth..... 1MHz
 Video Bandwidth 3MHz
 Detector Ave.
 Resolution Bandwidth..... 1MHz
 Video Bandwidth 10Hz

Video Bandwidth 10Hz

8.4 Test Procedure

1. The EUT is placed on a turntable. For below 1GHz, the EUT is 0.8m above ground plane; For above 1GHz, the EUT is 1.5m above ground plane.
2. The turntable shall be rotated for 360 degrees to determine the position of maximum emission level.
3. EUT is set 3m away from the receiving antenna, which is moved from 1m to 4m to find out the maximum emissions. The spectrum was investigated from the lowest radio frequency signal generated in the device, without going below 9 kHz, up to the tenth harmonic of the highest fundamental frequency or to 40 GHz, whichever is lower.
4. Maximum procedure was performed on the six highest emissions to ensure EUT compliance.
5. And also, each emission was to be maximized by changing the polarization of receiving antenna both horizontal and vertical.
6. Repeat above procedures until the measurements for all frequencies are complete.
7. The radiation measurements are tested under 3-axes(X, Y, Z) position(X denotes lying on the table, Y denotes side stand and Z denotes vertical stand), after pre-test, It was found that the worse radiation emission was get at the X position. So the data shown was the X position only.

8.5 Frequency range of radiated measurements.

According to FCC 47 CFR Section 15.33:

(a) For an intentional radiator, the spectrum shall be investigated from the lowest radio frequency signal generated in the device, without going below 9 kHz, up to at least the frequency shown in this paragraph:

(1) If the intentional radiator operates below 10 GHz: to the tenth harmonic of the highest fundamental frequency or to 40 GHz, whichever is lower.

(2) If the intentional radiator operates at or above 10 GHz and below 30 GHz: to the fifth harmonic of the highest fundamental frequency or to 100 GHz, whichever is lower.

(3) If the intentional radiator operates at or above 30 GHz: to the fifth harmonic of the highest fundamental frequency or to 200 GHz, whichever is lower, unless specified otherwise elsewhere in the rules.

(4) If the intentional radiator contains a digital device, regardless of whether this digital device controls the functions of the intentional radiator or the digital device is used for additional control or function purposes other than to enable the operation of the intentional radiator, the frequency range shall be investigated up to the range specified in paragraphs (a)(1) through (a)(3) of this section or the range applicable to the digital device, as shown in paragraph (b)(1) of this section, whichever is the higher frequency range of investigation.

Result: So the Frequency range of radiated form: 9 KHz to 10 GHz.

8.6 Test Result

Test Frequency: 9 KHz~30 MHz

The measurements were more than 20 dB below the limit and not reported.

Test Frequency: 30 MHz ~ 10 GHz

Frequency	Receiver Reading	Detector	Turn table Angle	RX Antenna		Corrected Factor	Corrected Amplitude	FCC Part 15.249/209/205	
				Height	Polar			Limit	Margin
(MHz)	(dB μ V)	(PK/QP)	Degree	(m)	(H/V)	(dB/m)	(dB μ V/m)	(dB μ V/m)	(dB)
60.89	34.51	QP	125	1.3	V	-11.40	23.11	40.00	-16.89
908.42	87.61	PK	141	1.5	H	1.98	89.59	94.00	-4.41
908.42	85.82	PK	45	1.6	V	1.98	87.80	94.00	-6.20
1816.84	57.25	PK	70	1.6	H	-13.81	43.44	74.00	-30.56
1816.84	57.87	PK	6	1.2	V	-13.81	44.06	74.00	-29.94
5450.52	56.26	PK	253	1.1	H	-4.04	52.22	74.00	-21.78
5450.52	59.32	PK	245	1.8	V	-4.04	55.28	74.00	-18.72
6358.94	60.82	PK	161	1.7	H	-2.49	58.33	74.00	-15.67
6358.94	62.75	PK	237	1.9	V	-2.49	60.26	74.00	-13.74

(* Note: For pulse modulated devices with a pulse-repetition frequency of 20 Hz or less and for which CISPR quasi-peak measurements are specified, compliance with the regulations shall be demonstrated using measuring equipment employing a peak detector function, properly adjusted for such factors as pulse desensitization, using the same measurement bandwidths that are indicated for CISPR quasi-peak measurements. So based on the data in Section9, the PRF is 4.93Hz which less than 20Hz, measuring equipment employing a peak function.)

AV = Peak +20Log10 (duty cycle) =PK+ (-11.03) [refer to section 9 for more detail]

Frequency	PK	RX Antenna Polar	Duty cycle Factor	AV	FCC Part 15.249/209/205	
					Limit	Margin
(MHz)	(dB μ V/m)	(H/V)	(dB)	(dB μ V/m)	(dB μ V/m)	(dB)
1816.84	43.44	H	-11.03	32.41	54.00	-21.59
1816.84	44.06	V	-11.03	33.03	54.00	-20.97
5450.52	52.22	H	-11.03	41.19	54.00	-12.81
5450.52	55.28	V	-11.03	44.25	54.00	-9.75
6358.94	58.33	H	-11.03	47.30	54.00	-6.70
6358.94	60.26	V	-11.03	49.23	54.00	-4.77

9 Periodic Operation

The duty cycle was determined by the following equation:

To calculate the actual field intensity, the duty cycle correction factor in decibel is needed for later use and can be obtained from following conversion

Duty Cycle(%)=Total On interval in a complete pulse train/ Length of a complete pulse train * %

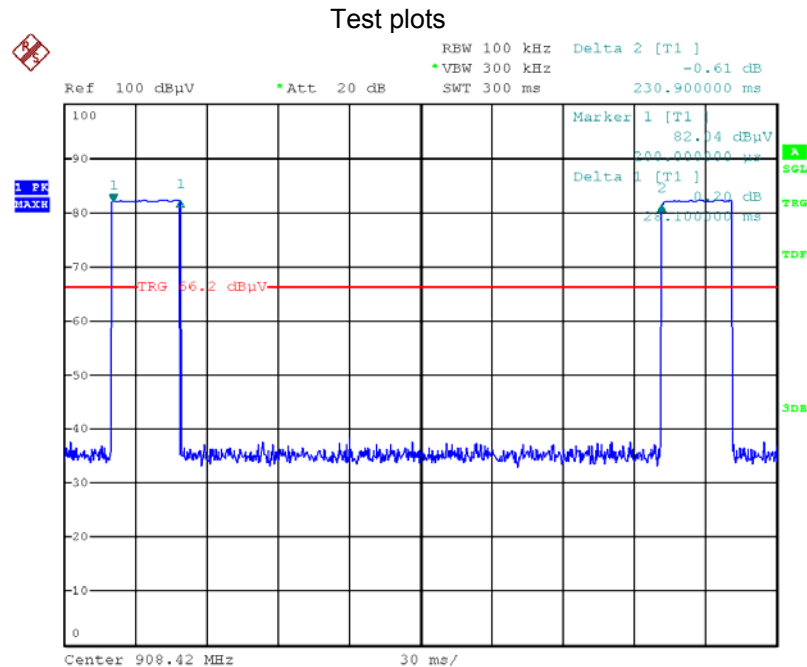
Duty Cycle Correction Factor(dB)=20 * Log₁₀(Duty Cycle Correction Factor)

Pulse-repetition frequency (Hz) =1/ Pulse duration(s)

Total transmission time(ms)	28.10
Pulse duration(s)	0.2028
Pulse-repetition frequency(Hz)	4.93
Length of a complete transmission period(ms)	100*
Duty Cycle(%)	28.10
Duty Cycle Correction Factor(dB)	-11.03

(* Note: the transmitter operates for longer than 0.1 seconds, the measured field strength shall be determined from the average absolute voltage during a 0.1 second interval during which the field strength is at its maximum value. So the Length of a complete transmission period=100ms)

Refer to the duty cycle plot (as below)



10 Band Edge

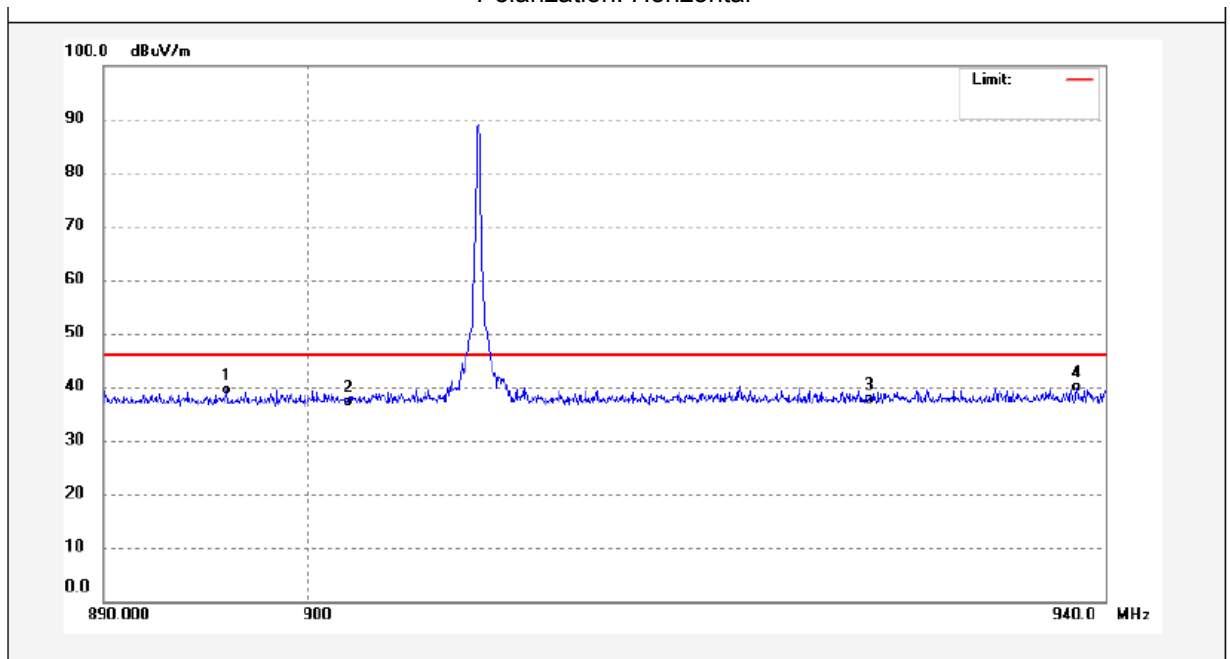
Test Requirement:	15.249(d):Emissions radiated outside of the specified frequency bands, except for harmonics, shall be attenuated by at least 50 dB below the level of the fundamental or to the general radiated emission limits in §15.209, whichever is the lesser attenuation.
Test Method:	ANSI C63.10:2013
Test Mode:	Transmitting

10.1 Test Procedure

Refer to section 8.4 of this test report.

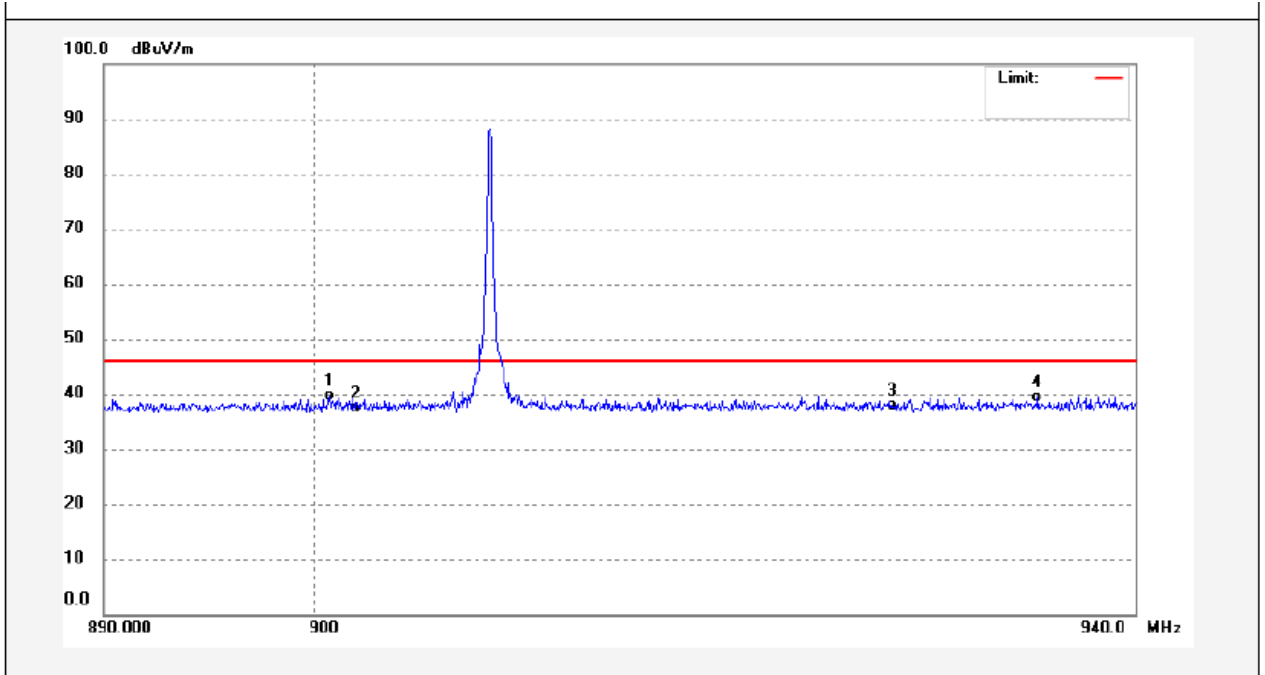
10.2 Test Result

Test plots
Polarization: Horizontal



No.	Freq. (MHz)	Reading (dBuV/m)	Factor (dB)	Result (dBuV/m)	Limit (dBuV/m)	Margin (dB)	Detector	Remark
1	896.0500	37.58	1.78	39.36	46.00	-6.64	QP	
2	902.0000	35.33	1.90	37.23	46.00	-8.77	QP	
3	928.0000	35.27	2.24	37.51	46.00	-8.49	QP	
4	938.5500	37.45	2.36	39.81	46.00	-6.19	QP	

Polarization: Horizontal



No.	Freq. (MHz)	Reading (dBuV/m)	Factor (dB)	Result (dBuV/m)	Limit (dBuV/m)	Margin (dB)	Detector	Remark
1	900.7500	37.72	1.87	39.59	46.00	-6.41	QP	
2	902.0000	35.59	1.90	37.49	46.00	-8.51	QP	
3	928.0000	35.64	2.24	37.88	46.00	-8.12	QP	
4	935.1499	37.06	2.33	39.39	46.00	-6.61	QP	

11 20 dB Bandwidth Measurement

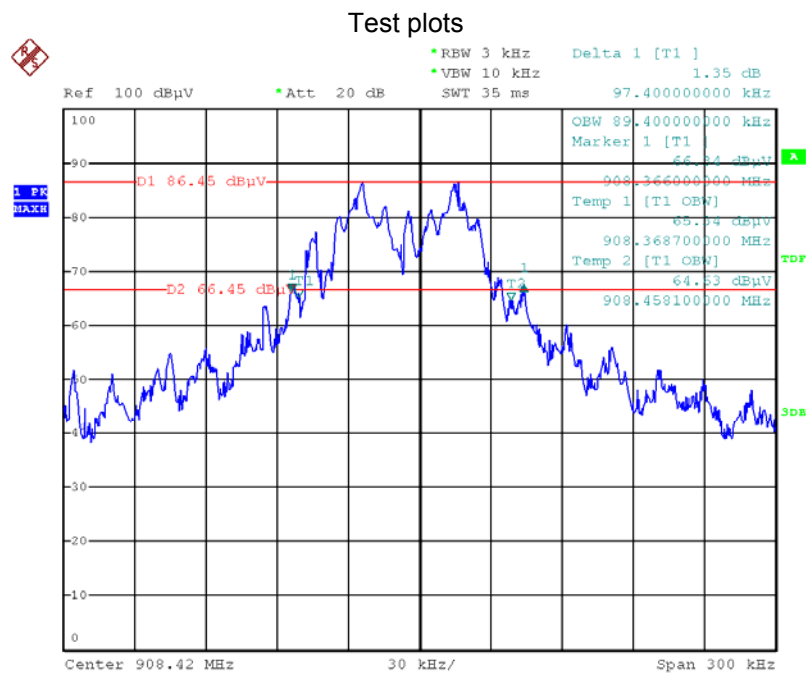
Test Requirement: FCC CFR47 Part 15 Section 15.215(c)
 Test Method: ANSI C63.10:2013
 Test Mode: Transmitting

11.1 Test Procedure

1. Remove the antenna from the EUT and then connect a low RF cable from the antenna port to the spectrum;
2. Set the spectrum analyser: RBW = 3 kHz, VBW = 10 kHz

11.2 Test Result

Frequency (MHz)	20dB Bandwidth Emission (kHz)
908.42	97.40



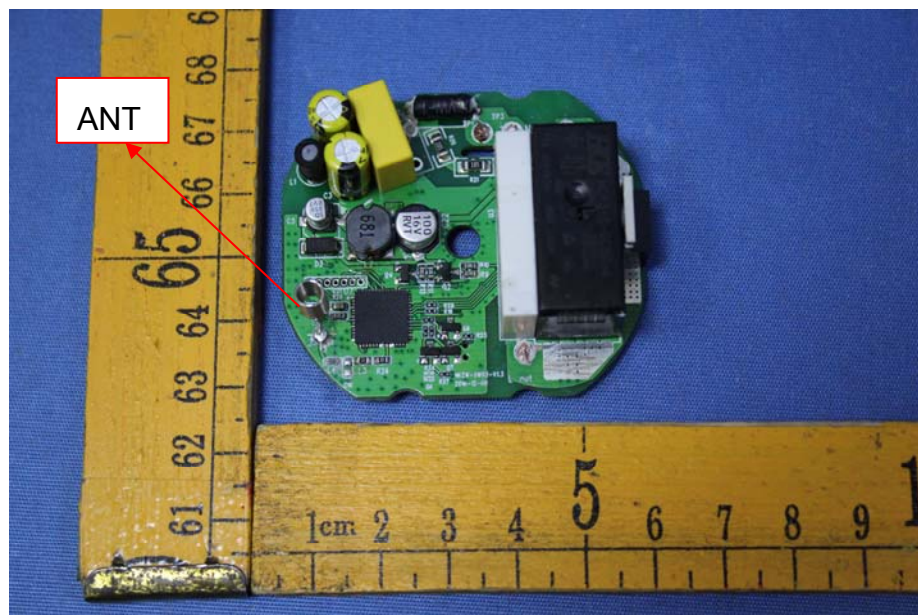
12 Antenna Requirement

An intentional radiator shall be designed to ensure that no antenna other than that furnished by the responsible party shall be used with the device. The use of a permanently attached antenna or of an antenna that uses a unique coupling to the intentional radiator shall be considered sufficient to comply with the provisions of this section. The manufacturer may design the unit so that a broken antenna can be replaced by the user, but the use of a standard antenna jack or electrical connector is prohibited. This requirement does not apply to carrier current devices or to devices operated under the provisions of §15.211, §15.213, §15.217, §15.219, or §15.221. Further, this requirement does not apply to intentional radiators that must be professionally installed, such as perimeter protection systems and some field disturbance sensors, or to other intentional radiators which, in accordance with §15.31(d), must be measured at the installation site. However, the installer shall be responsible for ensuring that the proper antenna is employed so that the limits in this part are not exceeded.

For intentional device, according to FCC 47 CFR Section 15.203, an intentional radiator shall be designed to ensure that no antenna other than that furnished by the responsible party shall be used with the device.

Result:

The EUT has one Internal Integrated Antenna, the gain is 0dBi. meets the requirements of FCC 15.203.



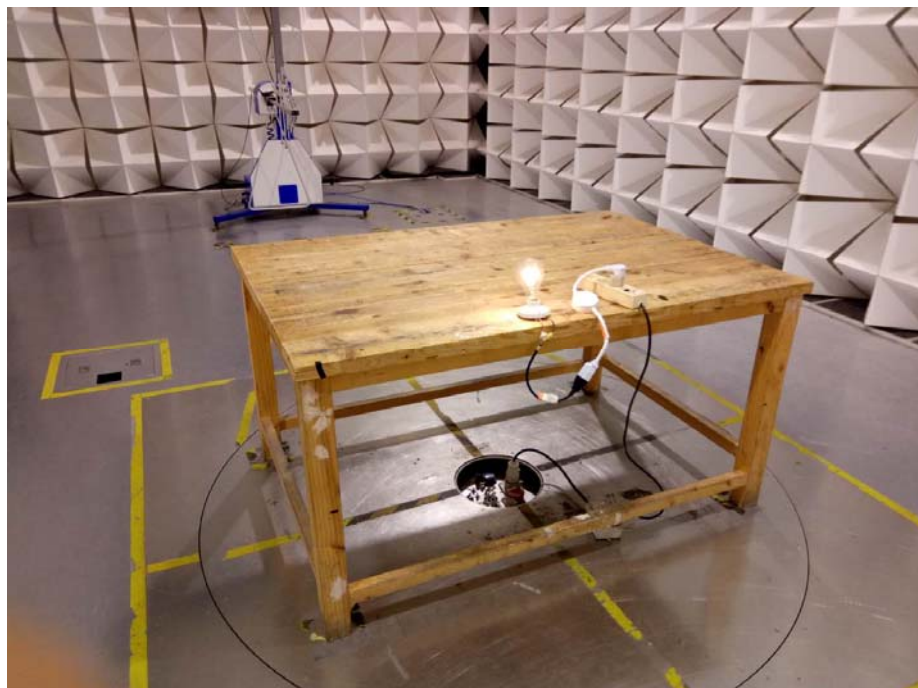
13 Photographs- Model HKZW-SW02 Test Setup Photos

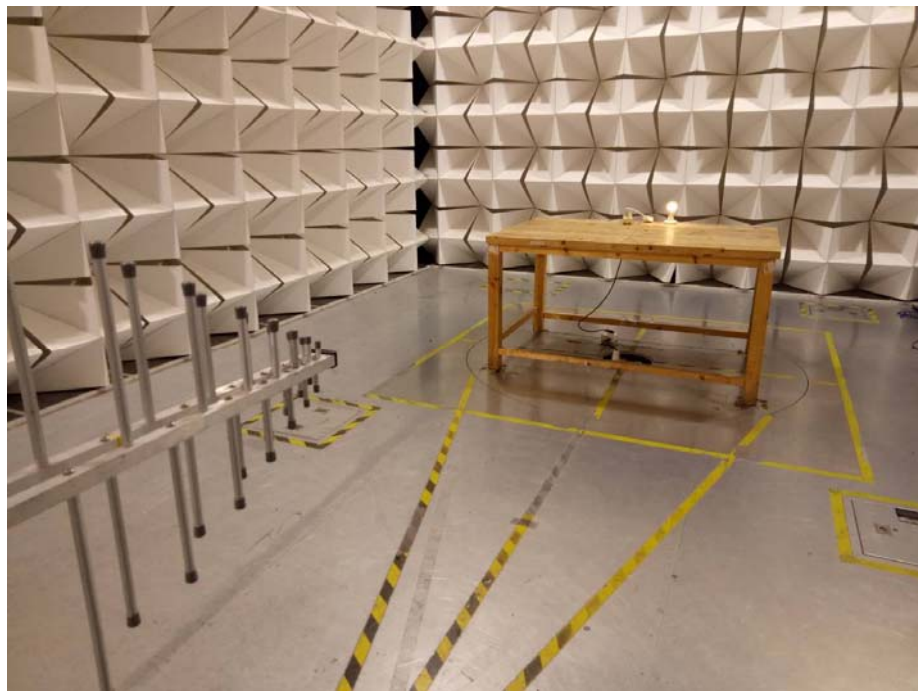
13.1 Photograph – Radiation Emission

Test frequency from 9 KHz to 30 MHz

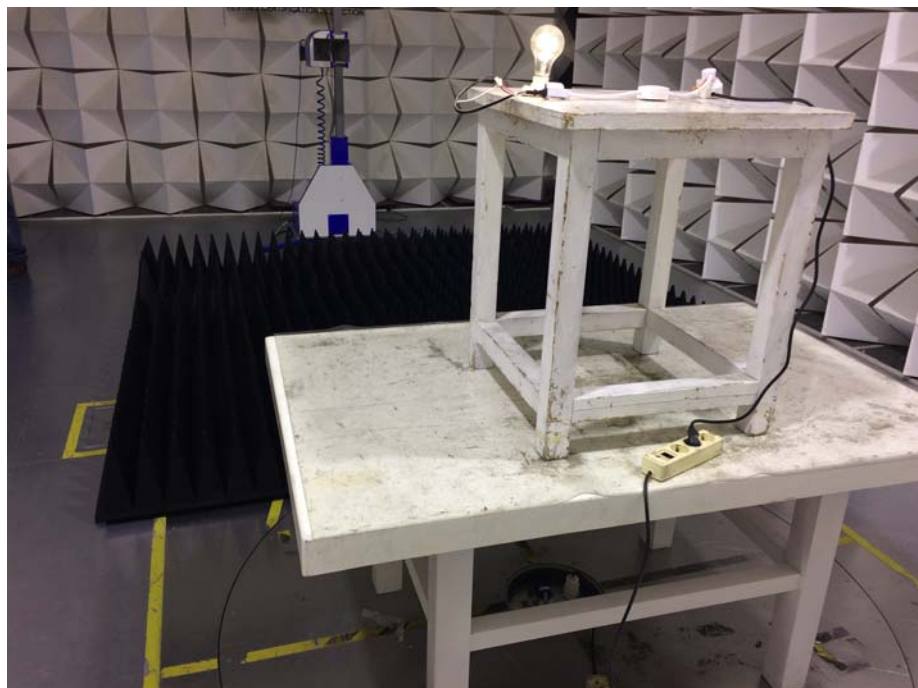


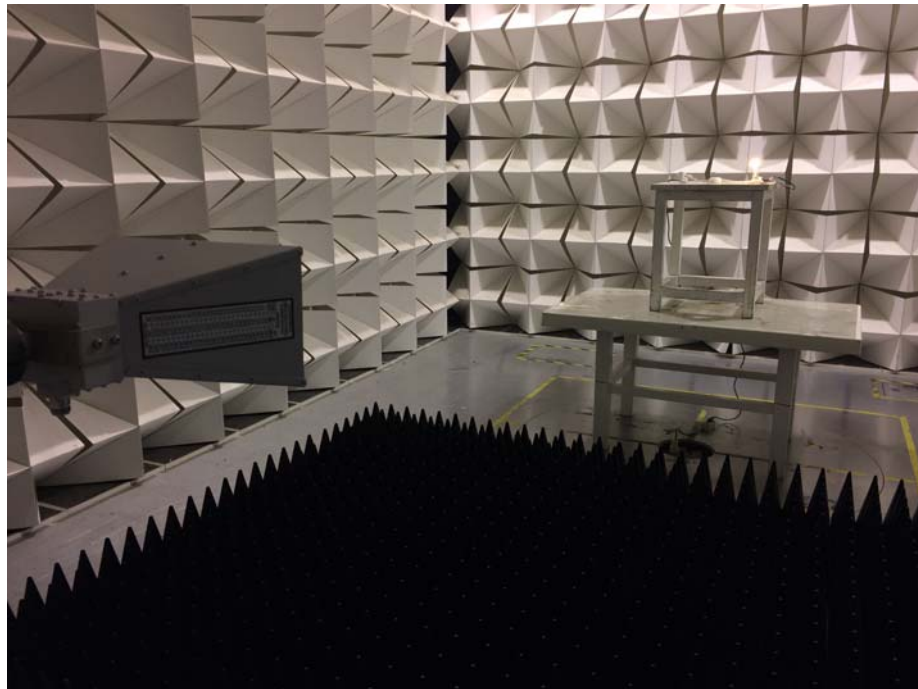
Test frequency from 30MHz to 1GHz





Test frequency from 1GHz to 10GHz





13.2 Photograph – Conducted Emission Test Setup

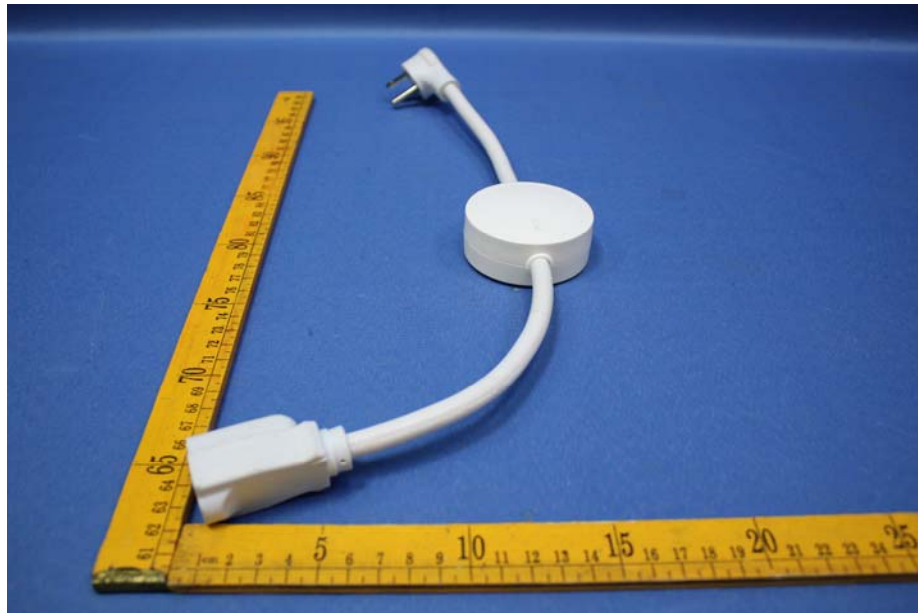


14 Photographs - Constructional Details

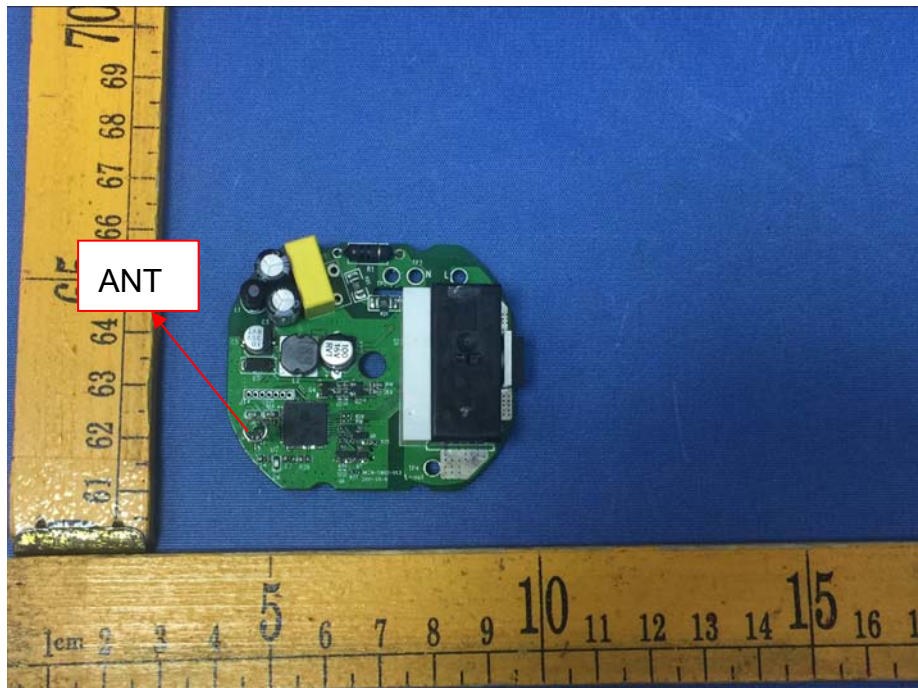
14.1 Model HKZW-SW02 - External Photos

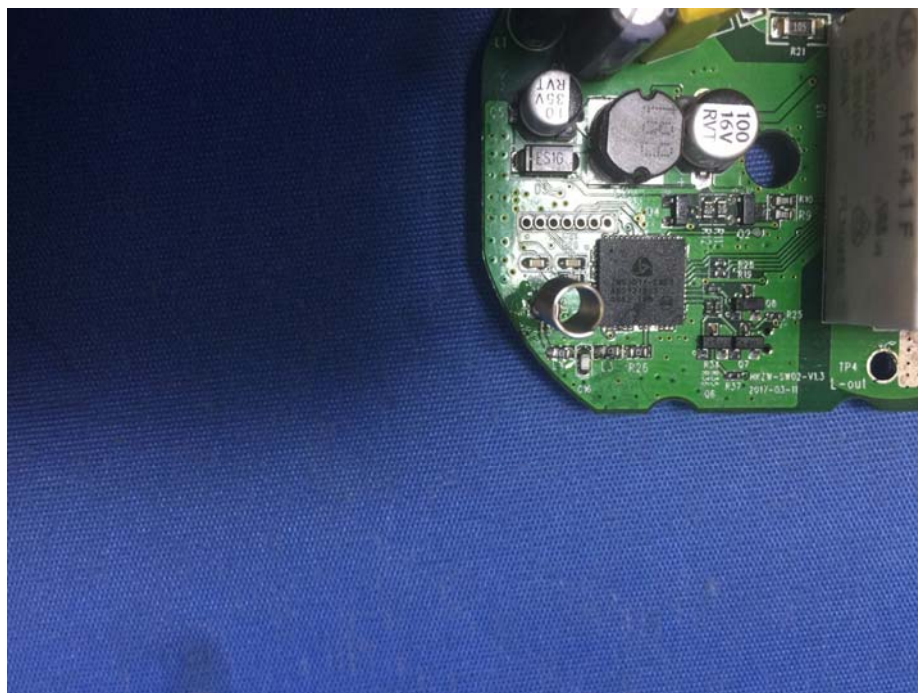


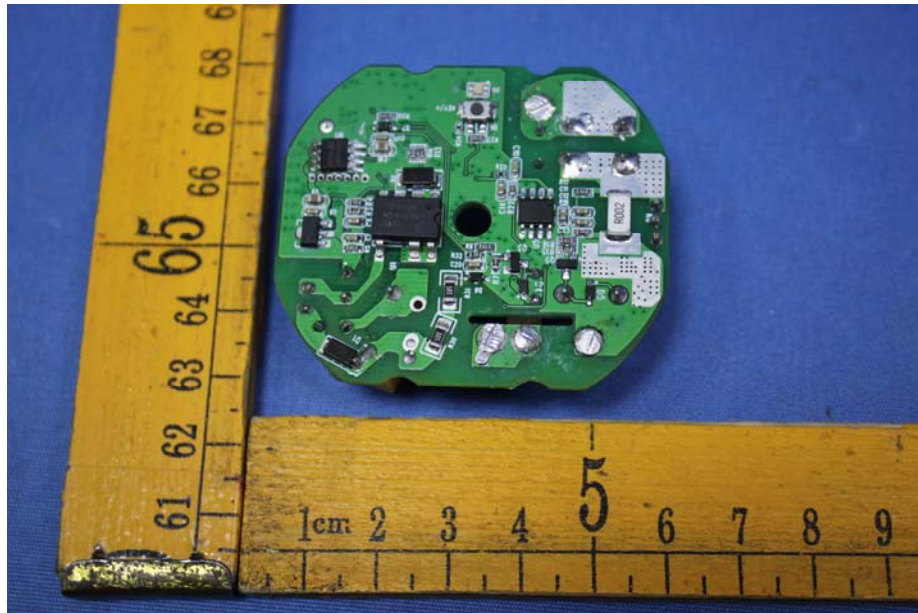




14.2 Model HKZW-SW02- Internal Photos







====End of Report====