

Smart Plug User Manual HKWL-SO07W HKWL-SO07WP

I . PRODUCT OVERVIEW

The Smart Plug is a wifi based switch which can be used to on/off control the electrical appliances after pairing to the wifi network. You also monitor the on/off status of the appliances through your mobile phone from anywhere as long as you have access to internet.

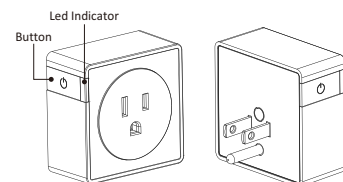
II . PACKAGE CONTENTS

- 1x Smart Plug
- 1x User Manual

III. PRODUCT FEATURES

- Support WiFi connection
- Works with Amazon Alexa and Google Assistant
- Firmware OTA upgrade supported
- Easy installation, plug and play
- Timing task settings Supported
- Over current protection(Applicable only to SO07WP)

IV. PRODUCT STRUCTURE



2

V . PRODUCT OVERVIEW

Power supply:	AC 90-135V,60Hz
Power loss:	≤1W
Nominal input voltage:	120V
Rated current:	15A max
Storage temperature:	-20-60°C
Operational temperature:	-10-40°C
Wireless standard:	IEEE802.11 b/g/n
Radio frequency:	2.4GHz—2.4835GHz
Encryption type:	WEP/TKIP/AES,WPS
Transmit power:	802.11b:18dBm±2dBm 802.11g:15dBm±2dBm 802.11n:15dBm±2dBm
Sensitivity:	802.11b:-91dBm@11Mbps 8%PER 802.11g:-75dBm@54Mbps 10%PER 802.11n:-72dBm@MCS7_HT20 10%PER

3

VI. POWER INDICATOR

HKWL-SO07W	HKWL-SO07WP
OFF: Purple red ON: Blue	OFF: Purple red 0~300W: Blue 300~600W: Cyan 600~900W: Green 900~1200W: Yellow 1200~1500W: Red 1500~1800W: Purple

When the Power of the load changes from low to high, the color of indicator will change in cycle as "blue, cyan, green, yellow, red, purple...". Total 6 grades, 300W each as difference. When the power is over 1800W (6th grade), The indicator will blink in purple and shut off the output in 10 seconds. (Applicable only to SO07WP)

VII. ADD&DELETE DEVICES

Scanning following two QR codes to download APP for Android and IOS System



Android



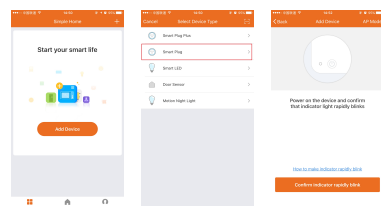
IOS

4

1. Add Devices

- EZ mode

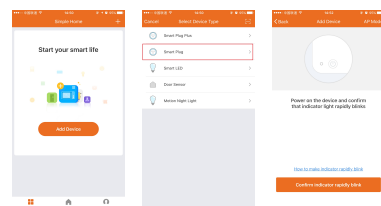
The moment the plug is powered, the LED Indicator will be flashing in green. Chose EZ Mode to include the network in the APP. The app will indicate the success when it's included successfully. The LED indicator will be solid in blue.



5

- AP mode

The moment the plug is powered, the LED Indicator will be flashing in green. Press and hold the button for 5 seconds and then release. The LED indicator will blink slowly in yellow. Chose AP Mode to include the network in the APP. The app will indicate the success when it's included successfully. The LED indicator will be solid in blue.



6

2. Switching network inclusion modes

EZ mode (LED is flashing) is the default inclusion way. When the plug is out of a network, switching the inclusion way from EZ mode and AP mode can be done by pressing and hold the button for 5 seconds and then release.

3. Removing from Wi-Fi network

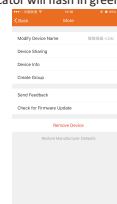
Select the Smart Plug that you want to delete on the APP. Click the icon at the upper right corner. Then click 'Delete' to remove the device from the APP and network, the LED light will be flashing in green.

NOTE:

After the smart plug is included to a network successfully. You don't need to re-include it when it's powered again after a power off. It will connect to the previous network automatically. During this process, it's LED indicator will blink slowly and later becomes solid.

VIII. RESET TO FACTORY DEFAULT

The way to reset the Smart Plug is press and hold the button for 5 seconds. The LED indicator will flash in green.



7

Notes

- The Smart Plug should be used in dry places (Using in bathrooms etc. is not allowed.)
- Please use the Smart Plug in safe environment (Working power higher than 1800W or current higher than 15A are not allowed)

IX. FCC NOTICE (FOR USA)

This device complies with part 15 of the FCC Rules. Operation is subject to the following two conditions: (1) This device may not cause harmful interference, and (2) this device must accept any interference received, including interference that may cause undesired operation.

Note: The Grantee is not responsible for any changes or modifications not expressly approved by the party responsible for compliance. such modifications could void the user's authority to operate the equipment.

Note: This equipment has been tested and found to comply with the limits for a Class B digital device, pursuant to part 15 of the FCC Rules. These limits are designed to provide reasonable protection against harmful interference in a residential installation. This equipment generates, uses and can radiate radio frequency energy and, if not installed and used in accordance with the instructions, may cause harmful interference to radio communications.

However, there is no guarantee that interference will not occur in a particular installation. If this equipment does cause harmful interference to radio or television reception, which can be determined by turning the equipment off and on, the user is encouraged to try to correct the interference by one or more of the following measures:
 —Reorient or relocate the receiving antenna.
 —Increase the separation between the equipment and receiver.
 —Connect the equipment into an outlet on a circuit different from that to which the receiver is connected.
 —Consult the dealer or an experienced radio/TV technician for help.

Note: The device has been evaluated to meet general RF exposure requirement. To maintain compliance with FCC's RF exposure guidelines, this equipment should be installed and operated with a minimum distance of 20cm between the radiator and your body.

8