

PORTABLE BLUETOOTH SPEAKER

CS-075



BUYER RECOMMENDATIONS

- Unpack the device carefully. Make sure there are no accessories left in the box. Check up the device for damage; if the products was damaged during transportation, address the firm which carried out the delivery; if the product functions incorrectly, address the dealer at once.
- Shipping and transportation equipment is permitted only in the original container.
- Does not require special condition for realization.
- Dispose of in accordance with regulations for the disposal of household and computer equipment.

APPLICATION

APM 571029 portable multimedia speaker system with Bluetooth and FM-radio is designed for operation with PC, notebook and other mobile device by means of data transfer via Bluetooth protocol. They can be also used in internet telephony, during video conferences, in multimedia applications, in interactive games, for speech recognition and foreign language teaching. These is a built in FM turner, and player with USB flash and with micro SD memory card.

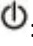
PACKING CONENTS

- Speaker system-1pc
- 3.5mm mini jack to 3.5mm mini-jack signal cable-1pc
- USB to micro USB power cable-1pc
- User's Manual-1pc

SPECIAL FEATURES

- Bluetooth wireless signal transmission
- Track switching control possibility
- Wired/wireless audio signal transmission
- Built-in player with USB flash and with micro SD memory card
- Built-in FM turner
- Convenient retractable handle for carrying
- Battery operation time up to 20hours
- Radius of operation up to 10m

SPEAKER SYETEM DESCRIPTION

- ① LED indicator:Bluetooth/FM/Player/AUX
- ② :POWER button(long pressing)
- ③ V-:Volume decrease
- ④ V+:Volume increase
- ⑤ M:Switch mode button:Bluetooth/FM/Player/Aux

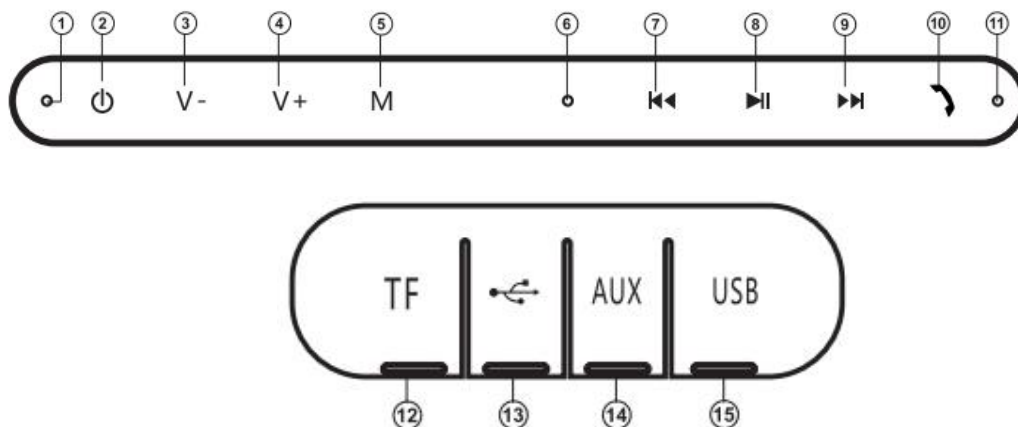
- ⑥ Microphone
- ⑦ Previous track(in player mode):Previous station(in radio mode)
- ⑧ Play/Pause(in player mode):Automatic scan of radio stations(short pressing in radio mode)
- ⑨ Next track(in player mode):Next station(in radio mode)
- ⑩ Receive/finish an incoming call button
- ⑪ Battery charge indicator
- ⑫ Micro SD card slot
- ⑬ Micro USB jack for connecting speakers to the charger,the USB port of laptop/PC
- ⑭ Aux:3.5mm mini-jack for audio signal connecting(Phone,MP3 player,etc.)
- ⑮ USB:USB flash connector

CONNECTION AND OPERATION

Attention! The built-in battery must be charged completely prior to the application.

Speaker system battery charging

- Connect speaker system to a USB port of PC or USB charger using micro USB to USB cable(included).During battery charging the indicator ⑪ is red.
- The battery is used in the speaker systems as an integral part of the device,therefore do not try extract or replace it,because this can result in the warranty cancellation or the device damage.



OPERATION MODES

Bluetooth mode

Wireless data transfer via the Bluetooth protocol enables to connect speaker system to

compatible devices. Maximum radius of action of data transfer is 10 m. Such obstacles as well as other electronic devices can interfere with the signal transfer.

- Turn on the speaker system Bluetooth mode – press button ⑤ several times until the indicator ① will start blinking blue color frequently.
- It is necessary to select the search mode of devices with Bluetooth on a signal source (telephone, notebook, smartphone, etc.). “APM 571029” message will be displayed on the screen which is to be connected to*.
- When connection is successful, there will be a short beep and the indication of search mode speaker system is over**.
- The indicator ① blinks blue shortly during the data exchange with a device connected via Bluetooth.

Radio mode

To improve radio reception, connect the cable 3.5mm mini-jack (included) to the AUX ⑭ or USB-micro USB cable (included) to the input ⑬.

Turn on the speaker system – press the button ⑤ several times until the radio mode will not turn on. Short press the button ⑧ activates auto search mode. After scanning completion, the first scanned radio station will start to operate automatically. With buttons ⑦ and ⑨ select a desired radio station.

MP3 player mode

Attention! The file system of a micro SD or USB flash carrier is FAT32. Maximum volume is 32 GB. It is not recommended to use the micro SD Ultra Speed.

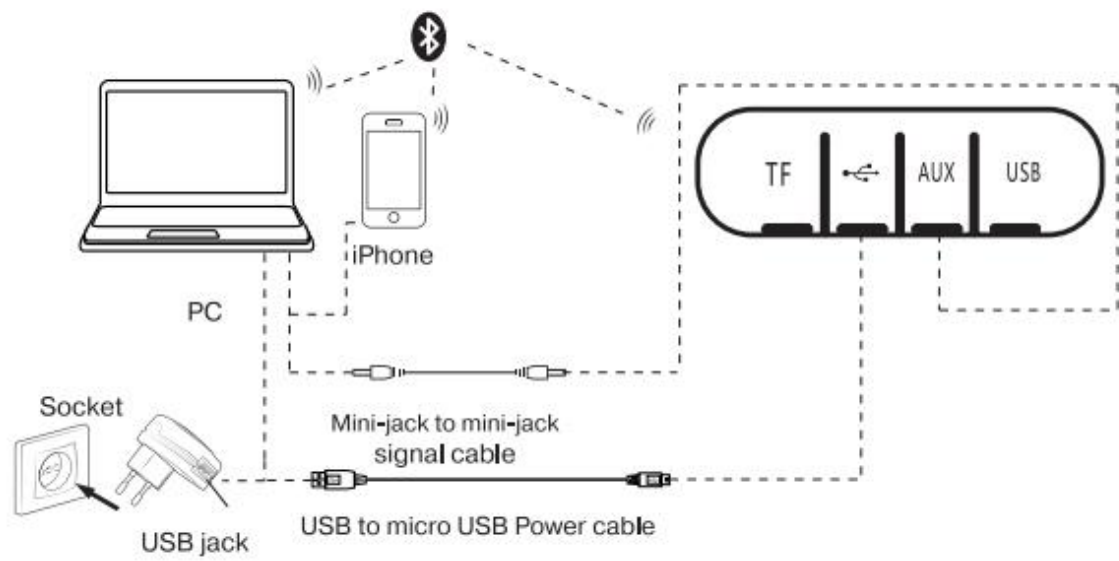
- Insert the USB flash or SD carrier into appropriate slot. If the speaker system is turned on position, the playback will start automatically. Playback /Pause modes are switched over with the help of the button ⑧. Tracks can be controlled by buttons ⑦ (previous track) and ⑨ (next track).

The use in the wired mode (AUX)

- Speaker system can be used as an external device for amplifying any audio source with a 3.5 mm output mini-jack. To do this, connect a cable mini USB, plug 3.5 mini-jack to the audio output AUX ⑭.

*You might have to enter “0000” code to connect some modes of devices via Bluetooth.

**If the item has been already registered in the device list of a source, then the search mode activation or not is obligatory. Choose the item name “APM 571029” and “connect” command the source



TECHNICAL SPECIFICATIONS:

Out power	5Wx2
Battery capacity, mA/h	1200
Power supply	USB/DC5
Cable lenght,m	0.5
Weight,g	840
Dimensions,mm	230x90x90
Radius of operation,m	Up to 10

NOTE: This equipment has been tested and found to comply with the limits for a Class B digital device, pursuant to part 15 of the FCC Rules. These limits are designed to provide reasonable protection against harmful interference in a residential installation. This equipment generates uses and can radiate radio frequency energy and, if not installed and used in accordance with the instructions, may cause harmful interference to radio communications. However, there is no guarantee that interference will not occur in a particular installation. If this equipment does cause harmful interference to radio or television reception, which can be determined by turning the equipment off and on, the user is encouraged to try to correct the interference by one or more of the following measures:

- Reorient or relocate the receiving antenna.
- Increase the separation between the equipment and receiver.
- Connect the equipment into an outlet on a circuit different from that to which the receiver is connected.
- Consult the dealer or an experienced radio/TV technician for help

Changes or modifications not expressly approved by the party responsible for compliance could void the user's authority to operate the equipment. This device complies with Part 15 of the FCC Rules. Operation is subject to the following two conditions:

- (1) this device may not cause harmful interference, and
- (2) this device must accept any interference received, including interference that may cause undesired operation.