
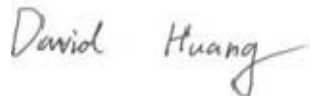



EMC TEST REPORT



Report No.: 16071229-FCC-E

Supersede Report No.:N/A

Applicant	SMT TELECOMM HK LIMITED	
Product Name	Mobile Phone	
Model No.	X444	
Serial No.	N/A	
Test Standard	FCC Part 15 Subpart B Class B:2015, ANSI C63.4: 2014	
Test Date	October 12 to 22, 2016	
Issue Date	October 23, 2016	
Test Result	<input checked="" type="checkbox"/> Pass <input type="checkbox"/> Fail	
Equipment complied with the specification	<input checked="" type="checkbox"/>	
Equipment did not comply with the specification	<input type="checkbox"/>	
		
Loren Luo Test Engineer	David Huang Checked By	
This test report may be reproduced in full only Test result presented in this test report is applicable to the tested sample only		

Issued by:

SIEMIC (SHENZHEN-CHINA) LABORATORIES

Zone A, Floor 1, Building 2 Wan Ye Long Technology Park

South Side of Zhoushi Road, Bao' an District, Shenzhen, Guangdong China 518108

Phone: +86 0755 2601 4629801 Email: China@siemic.com.cn

Laboratories Introduction

SIEMIC, headquartered in the heart of Silicon Valley, with superior facilities in US and Asia, is one of the leading independent testing and certification facilities providing customers with one-stop shop services for Compliance Testing and Global Certifications.



In addition to testing and certification, SIEMIC provides initial design reviews and compliance management throughout a project. Our extensive experience with China, Asia Pacific, North America, European, and International compliance requirements, assures the fastest, most cost effective way to attain regulatory compliance for the global markets.

Accreditations for Conformity Assessment

Country/Region	Scope
USA	EMC, RF/Wireless, SAR, Telecom
Canada	EMC, RF/Wireless, SAR, Telecom
Taiwan	EMC, RF, Telecom, SAR, Safety
Hong Kong	RF/Wireless, SAR, Telecom
Australia	EMC, RF, Telecom, SAR, Safety
Korea	EMI, EMS, RF, SAR, Telecom, Safety
Japan	EMI, RF/Wireless, SAR, Telecom
Singapore	EMC, RF, SAR, Telecom
Europe	EMC, RF, SAR, Telecom, Safety

Test Report	16071229-FCC-E
Page	3 of 36

This page has been left blank intentionally.

CONTENTS

1. REPORT REVISION HISTORY	5
2. CUSTOMER INFORMATION	5
3. TEST SITE INFORMATION	5
4. EQUIPMENT UNDER TEST (EUT) INFORMATION	6
5. TEST SUMMARY	8
6. MEASUREMENTS, EXAMINATION AND DERIVED RESULTS	9
6.1 AC POWER LINE CONDUCTED EMISSIONS.....	9
6.2 RADIATED EMISSIONS.....	19
ANNEX A. TEST INSTRUMENT.....	26
ANNEX B. EUT AND TEST SETUP PHOTOGRAPHS.....	27
ANNEX C. TEST SETUP AND SUPPORTING EQUIPMENT.....	32
ANNEX D. USER MANUAL / BLOCK DIAGRAM / SCHEMATICS / PARTLIST	35
ANNEX E. DECLARATION OF SIMILARITY.....	36

1. Report Revision History

Report No.	Report Version	Description	Issue Date
16071229-FCC-E	NONE	Original	October 23, 2016

2. Customer information

Applicant Name	SMT TELECOMM HK LIMITED
Applicant Add	Unit C 8/F, CHARMHILL CTR 50 HILLWOOD RD TST KL
Manufacturer	SMT TELECOMM HK LIMITED
Manufacturer Add	Unit C 8/F, CHARMHILL CTR 50 HILLWOOD RD TST KL

3. Test site information

Lab performing tests	SIEMIC (Shenzhen-China) LABORATORIES
Lab Address	Zone A, Floor 1, Building 2 Wan Ye Long Technology Park South Side of Zhoushi Road, Bao' an District, Shenzhen, Guangdong China 518108
FCC Test Site No.	718246
IC Test Site No.	4842E-1
Test Software	Radiated Emission Program-To Shenzhen v2.0

4. Equipment under Test (EUT) Information

Description of EUT:	Mobile Phone
Main Model:	X444
Serial Model:	N/A
Antenna Gain:	GSM850: -1.5dBi PCS1900: -1.3dBi UMTS-FDD Band V: -1.5dBi UMTS-FDD Band II: -1.2dBi Bluetooth/BLE/WIFI: -2.5dBi
Antenna Type:	PIFA antenna
Input Power:	Adapter: Model:PC444 Input: AC 100-240V~50/60Hz;0.15A Output: DC 5.0V,500mA Battery: Model:BPX444 Spec: 3.7V,1300mAh(4.81Wh) Charge limited voltage: 4.2V
Equipment Category :	JBP
Type of Modulation:	GSM / GPRS: GMSK EGPRS: GMSK,8PSK UMTS-FDD: QPSK 802.11b/g/n: DSSS, OFDM Bluetooth: GFSK, π /4DQPSK, 8DPSK BLE: GFSK

Test Report	16071229-FCC-E
Page	7 of 36

RF Operating Frequency (ies):

GSM850 TX: 824.2 ~ 848.8 MHz; RX: 869.2 ~ 893.8 MHz
 PCS1900 TX: 1850.2 ~ 1909.8 MHz; RX: 1930.2 ~ 1989.8 MHz
 UMTS-FDD Band V TX: 826.4 ~ 846.6 MHz; RX: 871.4 ~ 891.6 MHz
 UMTS-FDD Band II TX: 1852.4 ~ 1907.6 MHz;
 RX: 1932.4 ~ 1987.6 MHz
 WIFI: 802.11b/g/n(20M): 2412-2462 MHz
 WIFI: 802.11n(40M): 2422-2452 MHz
 Bluetooth& BLE: 2402-2480 MHz

Number of Channels:

GSM 850: 124CH
 PCS1900: 299CH
 UMTS-FDD Band V : 102CH
 UMTS-FDD Band II : 277CH
 WIFI :802.11b/g/n(20M): 11CH
 WIFI :802.11n(40M): 7CH
 Bluetooth: 79CH
 BLE: 40CH

Port: Earphone Port, USB Port

Trade Name : N/A

FCC ID: 2AIMEX444

Date EUT received: October 11, 2016

Test Date(s): October 12 to 22, 2016

5. Test Summary

The product was tested in accordance with the following specifications.

All testing has been performed according to below product classification:

FCC Rules	Description of Test	Result
§15.107; ANSI C63.4: 2014	AC Power Line Conducted Emissions	Compliance
§15.109; ANSI C63.4: 2014	Radiated Emissions	Compliance

Measurement Uncertainty

Emissions		
Test Item	Description	Uncertainty
Band Edge and Radiated Spurious Emissions	Confidence level of approximately 95% (in the case where distributions are normal), with a coverage factor of 2 (for EUTs < 0.5m X 0.5m X 0.5m)	+5.6dB/-4.5dB
-	-	-

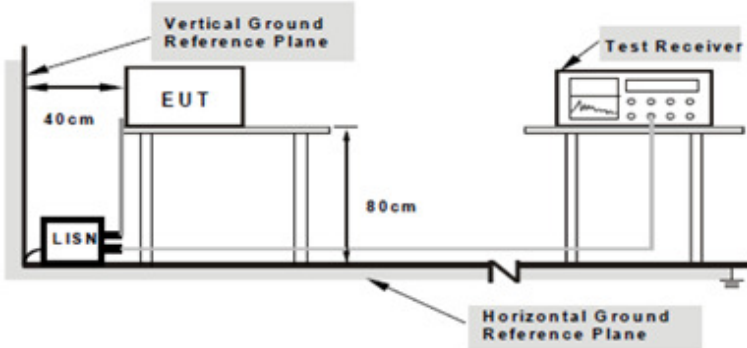
6. Measurements, Examination And Derived Results

6.1 AC Power Line Conducted Emissions

Temperature	25°C
Relative Humidity	53%
Atmospheric Pressure	1020mbar
Test date :	October 20, 2016
Tested By :	Loren Luo

Requirement(s):

Spec	Item	Requirement	Applicable														
47CFR§15.107	a)	<p>For Low-power radio-frequency devices that is designed to be connected to the public utility (AC) power line, the radio frequency voltage that is conducted back onto the AC power line on any frequency or frequencies, within the band 150 kHz to 30 MHz, shall not exceed the limits in the following table, as measured using a 50 [μ] H/50 ohms line impedance stabilization network (LISN). The lower limit applies at the boundary between the frequencies ranges.</p> <table border="1"> <thead> <tr> <th rowspan="2">Frequency ranges (MHz)</th> <th colspan="2">Limit (dBμV)</th> </tr> <tr> <th>QP</th> <th>Average</th> </tr> </thead> <tbody> <tr> <td>0.15 ~ 0.5</td> <td>66 – 56</td> <td>56 – 46</td> </tr> <tr> <td>0.5 ~ 5</td> <td>56</td> <td>46</td> </tr> <tr> <td>5 ~ 30</td> <td>60</td> <td>50</td> </tr> </tbody> </table>	Frequency ranges (MHz)	Limit (dBμV)		QP	Average	0.15 ~ 0.5	66 – 56	56 – 46	0.5 ~ 5	56	46	5 ~ 30	60	50	<input checked="" type="checkbox"/>
Frequency ranges (MHz)	Limit (dBμV)																
	QP	Average															
0.15 ~ 0.5	66 – 56	56 – 46															
0.5 ~ 5	56	46															
5 ~ 30	60	50															

Test Setup	 <p>Note: 1.Support units were connected to second LISN. 2.Both of LISNs (AMN) are 80cm from EUT and at least 80cm from other units and other metal planes support units.</p>
------------	---

Procedure	<ol style="list-style-type: none"> The EUT and supporting equipment were set up in accordance with the requirements of the standard on top of a 1.5m x 1m x 0.8m high, non-metallic table. The power supply for the EUT was fed through a 50Ω /50mH EUT LISN, connected to filtered mains.
-----------	--

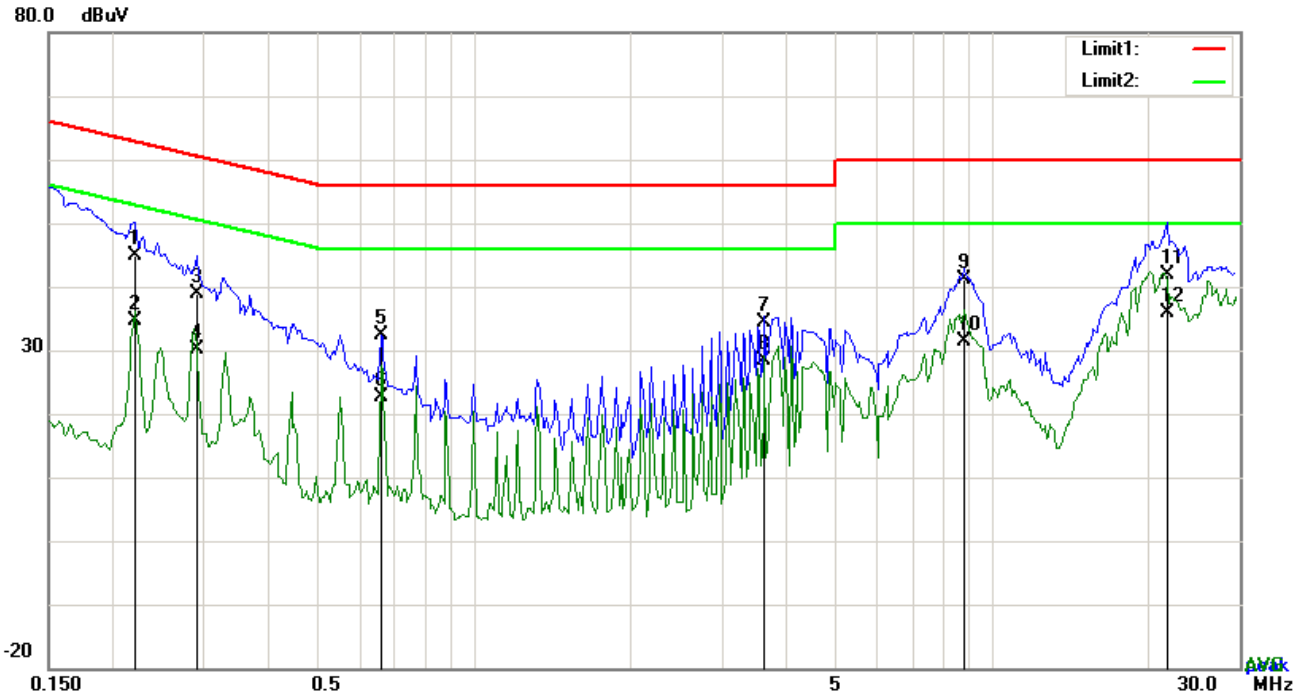
Test Report	16071229-FCC-E
Page	10 of 36

	<ol style="list-style-type: none"> 3. The RF OUT of the EUT LISN was connected to the EMI test receiver via a low-loss coaxial cable. 4. All other supporting equipment were powered separately from another main supply. 5. The EUT was switched on and allowed to warm up to its normal operating condition. 6. A scan was made on the NEUTRAL line (for AC mains) or Earth line (for DC power) over the required frequency range using an EMI test receiver. 7. High peaks, relative to the limit line, The EMI test receiver was then tuned to the selected frequencies and the necessary measurements made with a receiver bandwidth setting of 10 kHz. 8. Step 7 was then repeated for the LIVE line (for AC mains) or DC line (for DC power).
Remark	
Result	<input checked="" type="checkbox"/> Pass <input type="checkbox"/> Fail

Test Data Yes N/A

Test Plot Yes (See below) N/A

Test Mode 1:	USB Mode
---------------------	-----------------

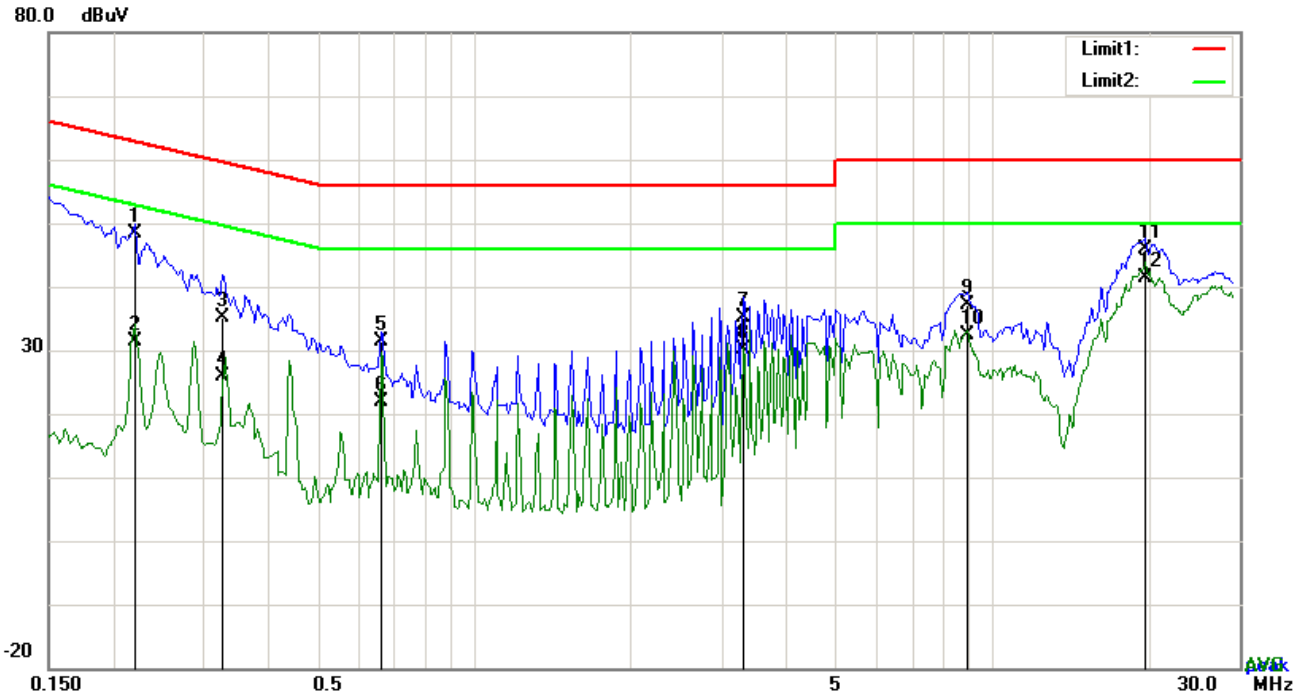


Test Data

Phase Line Plot at 120Vac, 60Hz

No.	P/L	Frequency	Reading	Detector	Corrected	Result	Limit	Margin
		(MHz)	(dBuV)		(dB)	(dBuV)	(dBuV)	(dB)
1	L1	0.2202	34.97	QP	10.03	45.00	62.81	-17.81
2	L1	0.2202	24.63	AVG	10.03	34.66	52.81	-18.15
3	L1	0.2904	28.73	QP	10.03	38.76	60.51	-21.75
4	L1	0.2904	20.19	AVG	10.03	30.22	50.51	-20.29
5	L1	0.6609	22.28	QP	10.03	32.31	56.00	-23.69
6	L1	0.6609	12.55	AVG	10.03	22.58	46.00	-23.42
7	L1	3.6357	24.33	QP	10.06	34.39	56.00	-21.61
8	L1	3.6357	18.34	AVG	10.06	28.40	46.00	-17.60
9	L1	8.8149	31.06	QP	10.13	41.19	60.00	-18.81
10	L1	8.8149	21.27	AVG	10.13	31.40	50.00	-18.60
11	L1	21.8097	31.65	QP	10.33	41.98	60.00	-18.02
12	L1	21.8097	25.56	AVG	10.33	35.89	50.00	-14.11

Test Mode 1: USB Mode

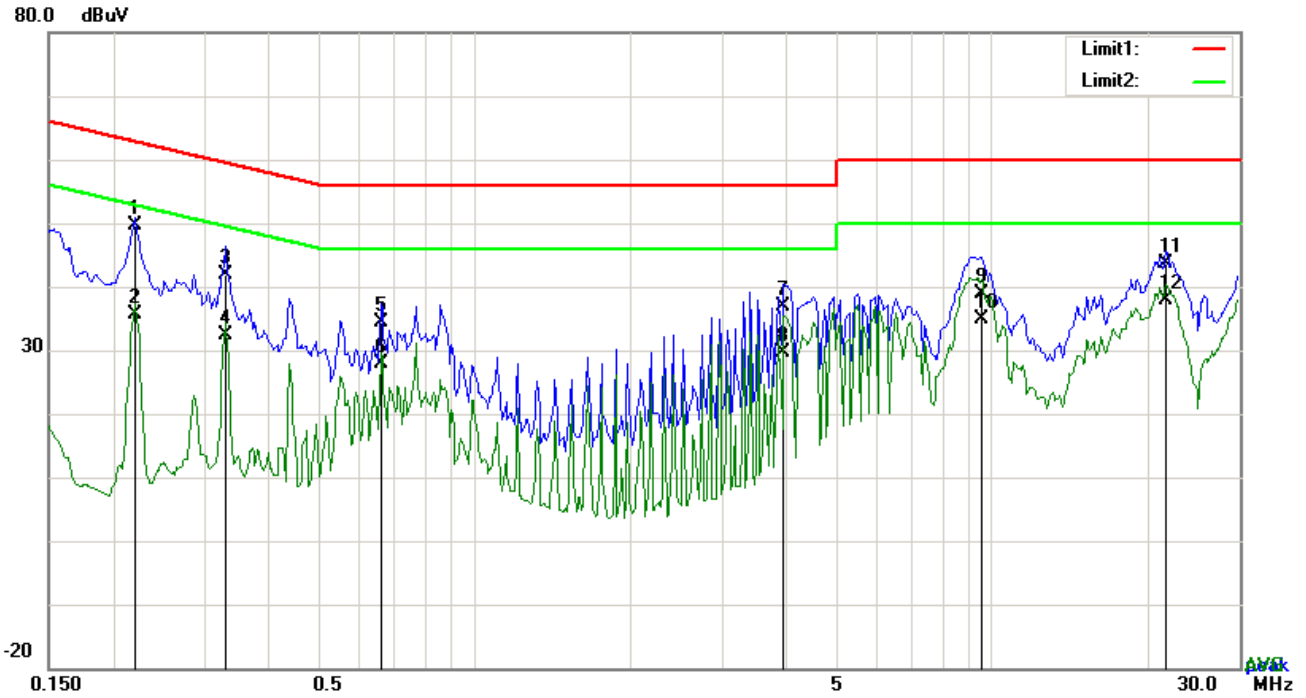


Test Data

Phase Neutral Plot at 120Vac, 60Hz

No.	P/L	Frequency	Reading	Detector	Corrected	Result	Limit	Margin
		(MHz)	(dBuV)		(dB}	(dBuV)	(dBuV)	(dB)
1	N	0.2202	38.28	QP	10.02	48.30	62.81	-14.51
2	N	0.2202	21.45	AVG	10.02	31.47	52.81	-21.34
3	N	0.3255	25.03	QP	10.02	35.05	59.57	-24.52
4	N	0.3255	15.83	AVG	10.02	25.85	49.57	-23.72
5	N	0.6609	21.38	QP	10.02	31.40	56.00	-24.60
6	N	0.6609	11.83	AVG	10.02	21.85	46.00	-24.15
7	N	3.3042	25.04	QP	10.05	35.09	56.00	-20.91
8	N	3.3042	20.01	AVG	10.05	30.06	46.00	-15.94
9	N	8.9202	27.02	QP	10.12	37.14	60.00	-22.86
10	N	8.9202	22.34	AVG	10.12	32.46	50.00	-17.54
11	N	19.8207	35.62	QP	10.26	45.88	60.00	-14.12
12	N	19.8207	31.18	AVG	10.26	41.44	50.00	-8.56

Test Mode 1:	USB Mode
---------------------	-----------------

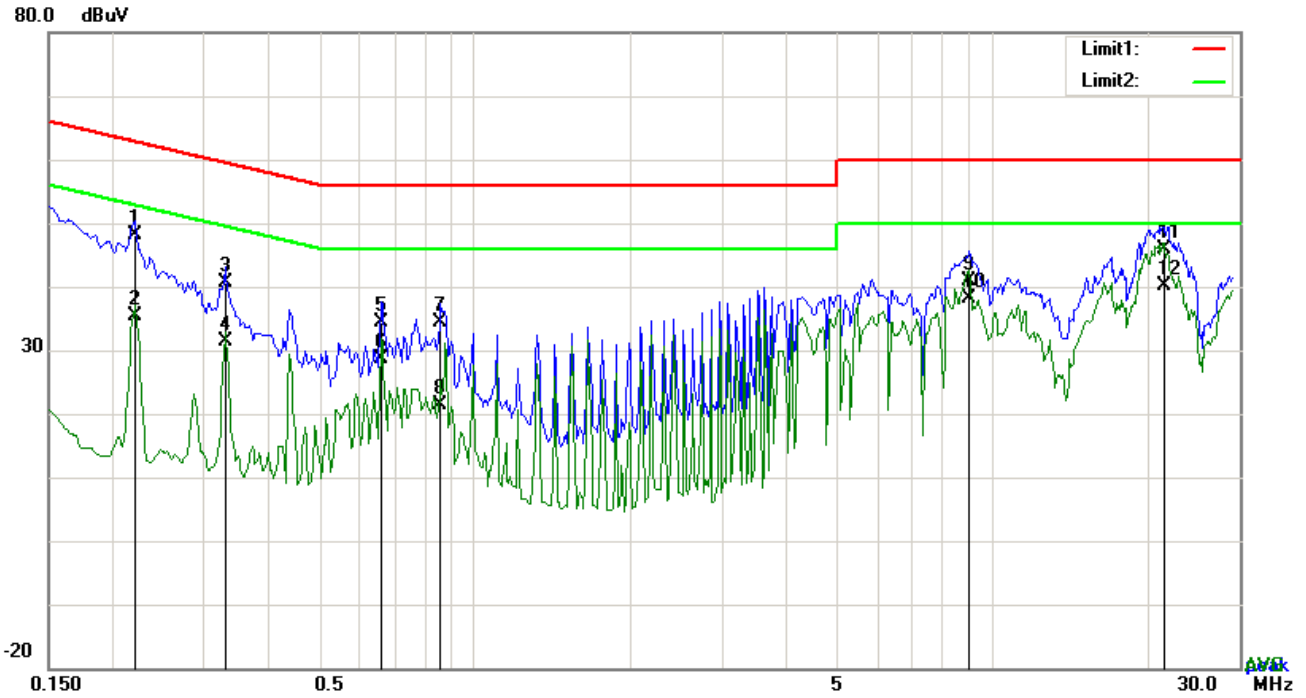


Test Data

Phase Line Plot at 240Vac, 60Hz

No.	P/L	Frequency	Reading	Detector	Corrected	Result	Limit	Margin
		(MHz)	(dBuV)		(dB)	(dBuV)	(dBuV)	(dB)
1	L1	0.2202	39.51	QP	10.03	49.54	62.81	-13.27
2	L1	0.2202	25.64	AVG	10.03	35.67	52.81	-17.14
3	L1	0.3294	31.87	QP	10.03	41.90	59.47	-17.57
4	L1	0.3294	22.31	AVG	10.03	32.34	49.47	-17.13
5	L1	0.6609	24.28	QP	10.03	34.31	56.00	-21.69
6	L1	0.6609	17.85	AVG	10.03	27.88	46.00	-18.12
7	L1	3.9594	26.76	QP	10.07	36.83	56.00	-19.17
8	L1	3.9594	19.62	AVG	10.07	29.69	46.00	-16.31
9	L1	9.5016	28.67	QP	10.14	38.81	60.00	-21.19
10	L1	9.5016	24.72	AVG	10.14	34.86	50.00	-15.14
11	L1	21.6732	33.38	QP	10.33	43.71	60.00	-16.29
12	L1	21.6732	27.47	AVG	10.33	37.80	50.00	-12.20

Test Mode 1: USB Mode

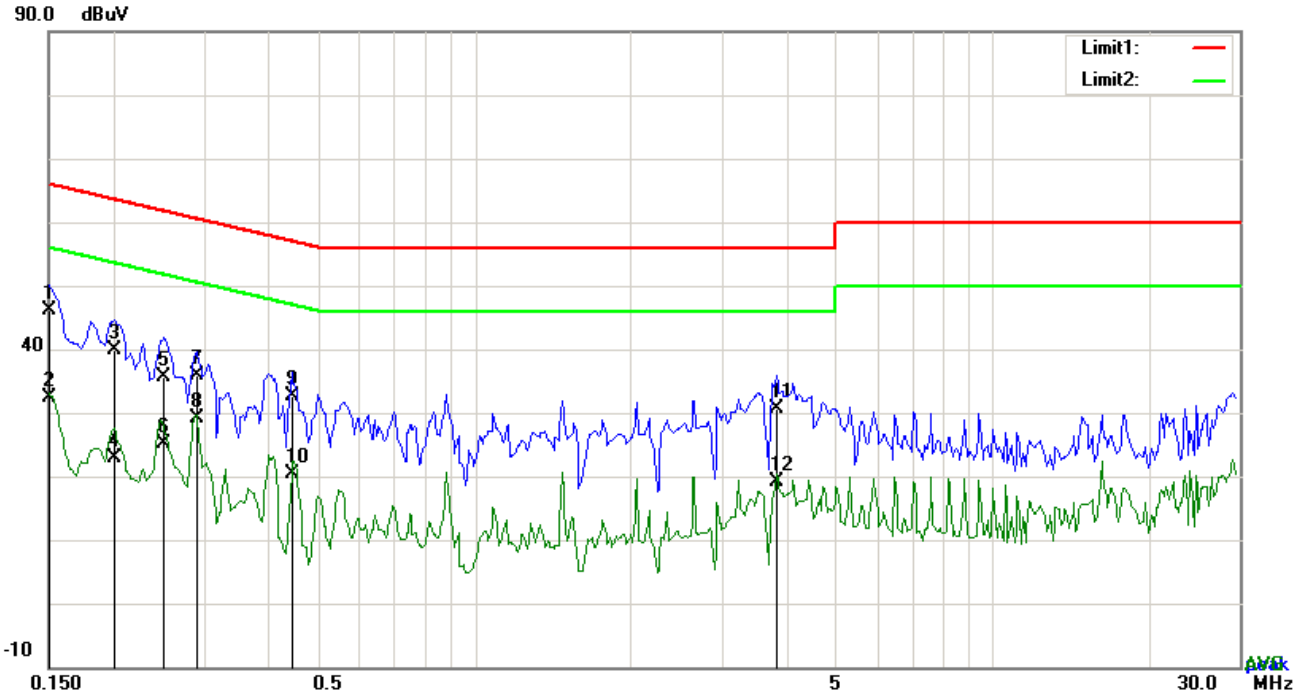


Test Data

Phase Neutral Plot at 240Vac, 60Hz

No.	P/L	Frequency	Reading	Detector	Corrected	Result	Limit	Margin
		(MHz)	(dBuV)		(dB)	(dBuV)	(dBuV)	(dB)
1	N	0.2202	38.08	QP	10.02	48.10	62.81	-14.71
2	N	0.2202	25.34	AVG	10.02	35.36	52.81	-17.45
3	N	0.3294	30.57	QP	10.02	40.59	59.47	-18.88
4	N	0.3294	21.39	AVG	10.02	31.41	49.47	-18.06
5	N	0.6609	24.39	QP	10.02	34.41	56.00	-21.59
6	N	0.6609	18.56	AVG	10.02	28.58	46.00	-17.42
7	N	0.8598	24.31	QP	10.03	34.34	56.00	-21.66
8	N	0.8598	11.35	AVG	10.03	21.38	46.00	-24.62
9	N	9.0255	30.82	QP	10.13	40.95	60.00	-19.05
10	N	9.0255	27.99	AVG	10.13	38.12	50.00	-11.88
11	N	21.3725	35.48	QP	10.28	45.76	60.00	-14.24
12	N	21.3725	29.83	AVG	10.28	40.11	50.00	-9.89

Test Mode 2:	Camera Mode
---------------------	--------------------

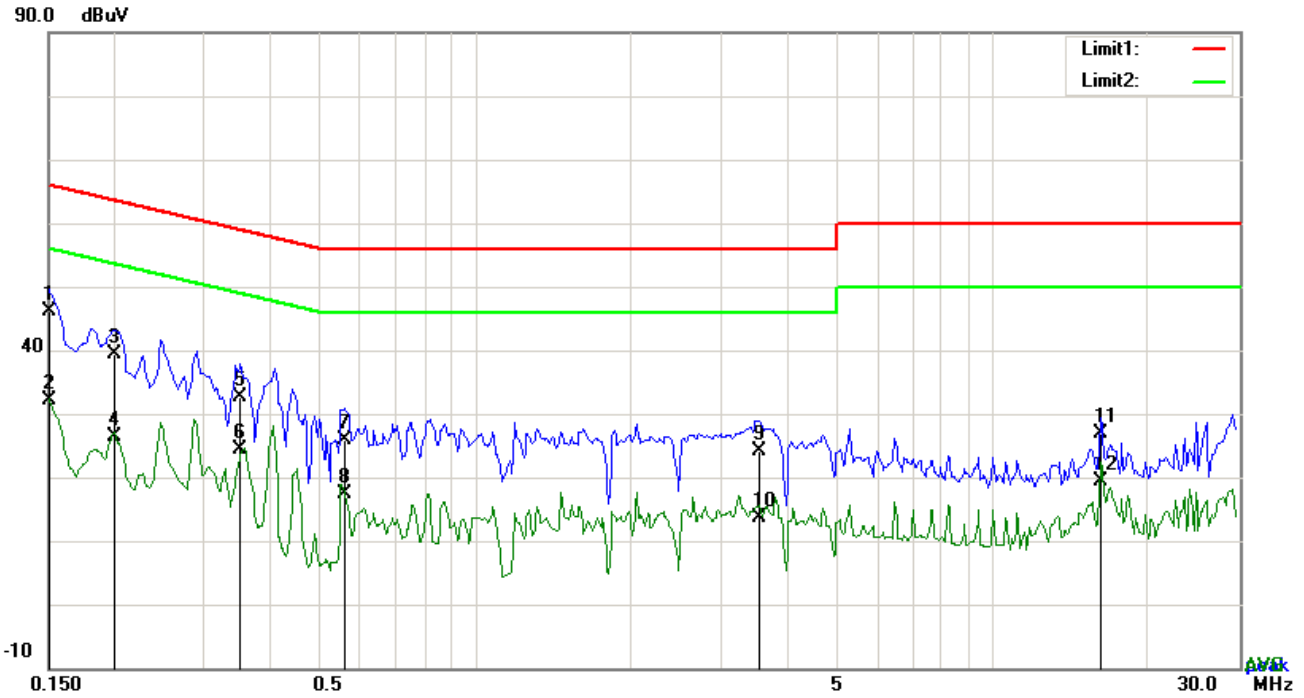


Test Data

Phase Line Plot at 120Vac, 60Hz

No.	P/L	Frequency	Reading	Detector	Corrected	Result	Limit	Margin
		(MHz)	(dBuV)		(dB)	(dBuV)	(dBuV)	(dB)
1	L1	0.1500	36.12	QP	10.03	46.15	66.00	-19.85
2	L1	0.1500	22.26	AVG	10.03	32.29	56.00	-23.71
3	L1	0.2007	29.87	QP	10.03	39.90	63.58	-23.68
4	L1	0.2007	12.77	AVG	10.03	22.80	53.58	-30.78
5	L1	0.2514	25.71	QP	10.03	35.74	61.71	-25.97
6	L1	0.2514	15.20	AVG	10.03	25.23	51.71	-26.48
7	L1	0.2904	25.73	QP	10.03	35.76	60.51	-24.75
8	L1	0.2904	19.00	AVG	10.03	29.03	50.51	-21.48
9	L1	0.4425	22.55	QP	10.03	32.58	57.01	-24.43
10	L1	0.4425	10.41	AVG	10.03	20.44	47.01	-26.57
11	L1	3.8229	20.62	QP	10.07	30.69	56.00	-25.31
12	L1	3.8229	9.02	AVG	10.07	19.09	46.00	-26.91

Test Mode 2:	Camera Mode
---------------------	--------------------

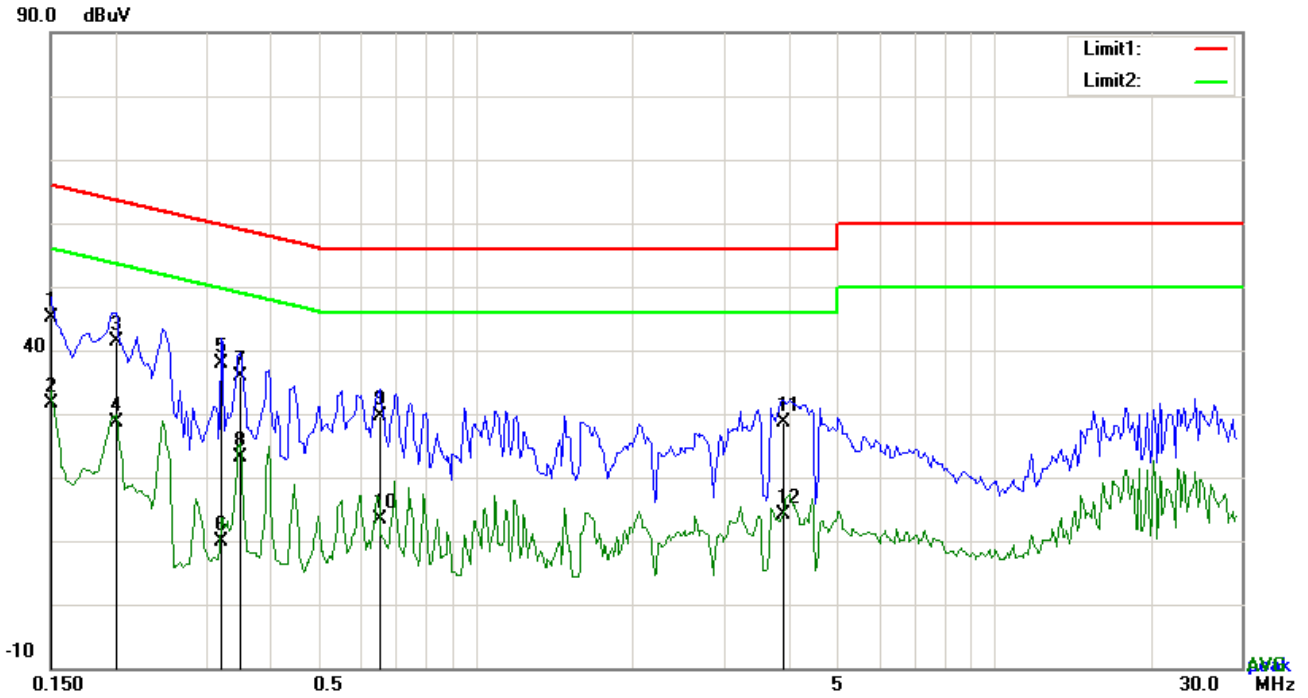


Test Data

Phase Neutral Plot at 120Vac, 60Hz

No.	P/L	Frequency	Reading	Detector	Corrected	Result	Limit	Margin
		(MHz)	(dBuV)		(dB)	(dBuV)	(dBuV)	(dB)
1	N	0.1500	36.01	QP	10.02	46.03	66.00	-19.97
2	N	0.1500	22.04	AVG	10.02	32.06	56.00	-23.94
3	N	0.2007	29.44	QP	10.02	39.46	63.58	-24.12
4	N	0.2007	16.32	AVG	10.02	26.34	53.58	-27.24
5	N	0.3528	22.56	QP	10.02	32.58	58.90	-26.32
6	N	0.3528	14.27	AVG	10.02	24.29	48.90	-24.61
7	N	0.5595	15.82	QP	10.02	25.84	56.00	-30.16
8	N	0.5595	7.47	AVG	10.02	17.49	46.00	-28.51
9	N	3.5421	14.05	QP	10.06	24.11	56.00	-31.89
10	N	3.5421	3.60	AVG	10.06	13.66	46.00	-32.34
11	N	16.1703	16.67	QP	10.21	26.88	60.00	-33.12
12	N	16.1703	9.17	AVG	10.21	19.38	50.00	-30.62

Test Mode 2:	Camera Mode
---------------------	--------------------

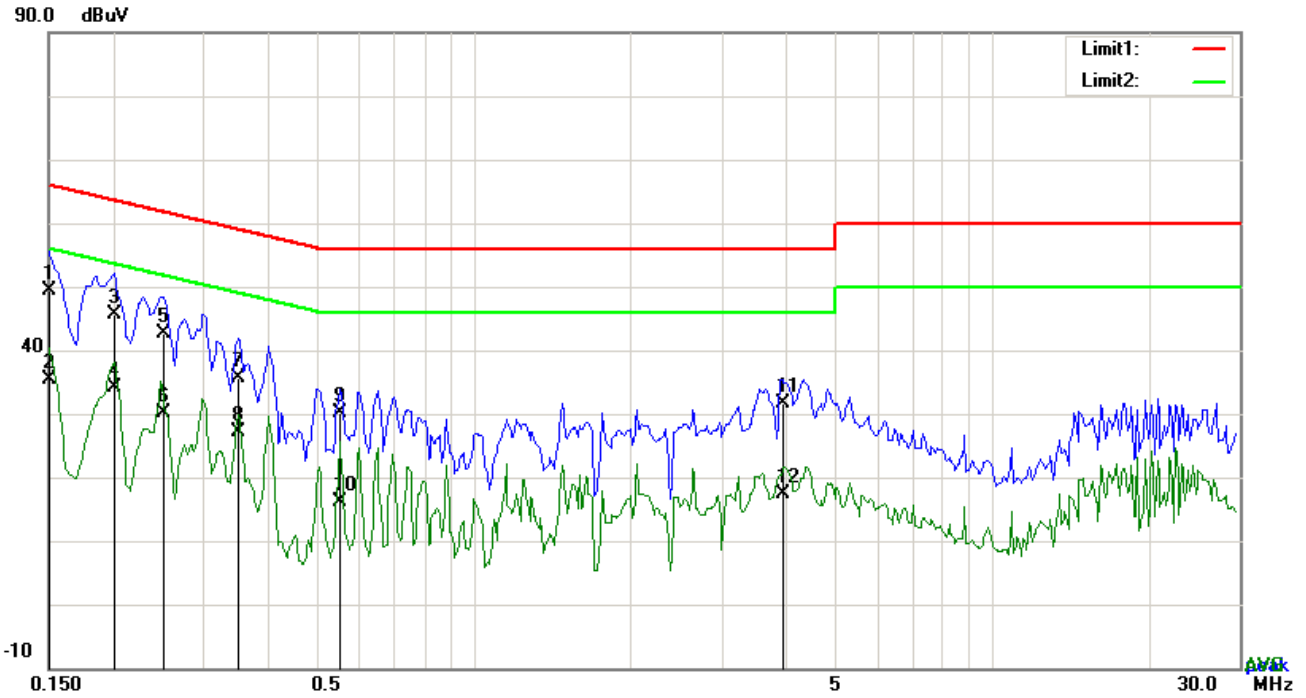


Test Data

Phase Line Plot at 240Vac, 60Hz

No.	P/L	Frequency	Reading	Detector	Corrected	Result	Limit	Margin
		(MHz)	(dBuV)		(dB)	(dBuV)	(dBuV)	(dB)
1	L1	0.1500	34.99	QP	10.03	45.02	66.00	-20.98
2	L1	0.1500	21.52	AVG	10.03	31.55	56.00	-24.45
3	L1	0.2007	31.41	QP	10.03	41.44	63.58	-22.14
4	L1	0.2007	18.57	AVG	10.03	28.60	53.58	-24.98
5	L1	0.3216	27.95	QP	10.03	37.98	59.67	-21.69
6	L1	0.3216	-0.16	AVG	10.03	9.87	49.67	-39.80
7	L1	0.3489	25.91	QP	10.03	35.94	58.99	-23.05
8	L1	0.3489	13.04	AVG	10.03	23.07	48.99	-25.92
9	L1	0.6492	19.61	QP	10.03	29.64	56.00	-26.36
10	L1	0.6492	3.25	AVG	10.03	13.28	46.00	-32.72
11	L1	3.9048	18.64	QP	10.07	28.71	56.00	-27.29
12	L1	3.9048	4.17	AVG	10.07	14.24	46.00	-31.76

Test Mode 2:	Camera Mode
---------------------	--------------------



Test Data

Phase Neutral Plot at 240Vac, 60Hz

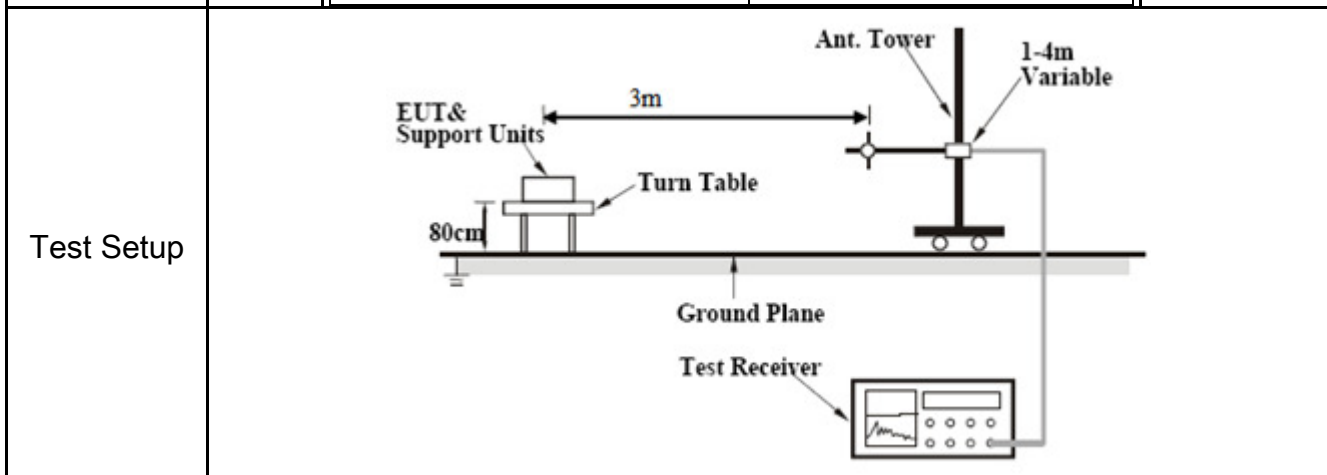
No.	P/L	Frequency	Reading	Detector	Corrected	Result	Limit	Margin
		(MHz)	(dBuV)		(dB)	(dBuV)	(dBuV)	(dB)
1	N	0.1500	39.37	QP	10.02	49.39	66.00	-16.61
2	N	0.1500	25.46	AVG	10.02	35.48	56.00	-20.52
3	N	0.2007	35.53	QP	10.02	45.55	63.58	-18.03
4	N	0.2007	24.15	AVG	10.02	34.17	53.58	-19.41
5	N	0.2514	32.70	QP	10.02	42.72	61.71	-18.99
6	N	0.2514	20.08	AVG	10.02	30.10	51.71	-21.61
7	N	0.3489	25.66	QP	10.02	35.68	58.99	-23.31
8	N	0.3489	17.16	AVG	10.02	27.18	48.99	-21.81
9	N	0.5478	20.09	QP	10.02	30.11	56.00	-25.89
10	N	0.5478	6.11	AVG	10.02	16.13	46.00	-29.87
11	N	3.9360	21.65	QP	10.06	31.71	56.00	-24.29
12	N	3.9360	7.20	AVG	10.06	17.26	46.00	-28.74

6.2 Radiated Emissions

Temperature	25°C
Relative Humidity	53%
Atmospheric Pressure	1020mbar
Test date :	October 20, 2016
Tested By :	Loren Luo

Requirement(s):

Spec	Item	Requirement	Applicable										
47CFR§15.109(d)	a)	Except higher limit as specified elsewhere in other section, the emissions from the low-power radio-frequency devices shall not exceed the field strength levels specified in the following table and the level of any unwanted emissions shall not exceed the level of the fundamental emission. The tighter limit applies at the band edges	<input checked="" type="checkbox"/>										
		<table border="1"> <thead> <tr> <th>Frequency range (MHz)</th> <th>Field Strength ($\mu\text{V/m}$)</th> </tr> </thead> <tbody> <tr> <td>30 – 88</td> <td>100</td> </tr> <tr> <td>88 – 216</td> <td>150</td> </tr> <tr> <td>216 960</td> <td>200</td> </tr> <tr> <td>Above 960</td> <td>500</td> </tr> </tbody> </table>		Frequency range (MHz)	Field Strength ($\mu\text{V/m}$)	30 – 88	100	88 – 216	150	216 960	200	Above 960	500
		Frequency range (MHz)		Field Strength ($\mu\text{V/m}$)									
		30 – 88		100									
		88 – 216		150									
216 960	200												
Above 960	500												



Procedure	<ol style="list-style-type: none"> 1. The EUT was switched on and allowed to warm up to its normal operating condition. 2. The test was carried out at the selected frequency points obtained from the EUT characterization. Maximization of the emissions, was carried out by rotating the EUT, changing the antenna polarization, and adjusting the antenna height in the following manner: <ol style="list-style-type: none"> a. Vertical or horizontal polarization (whichever gave the higher emission level
-----------	---

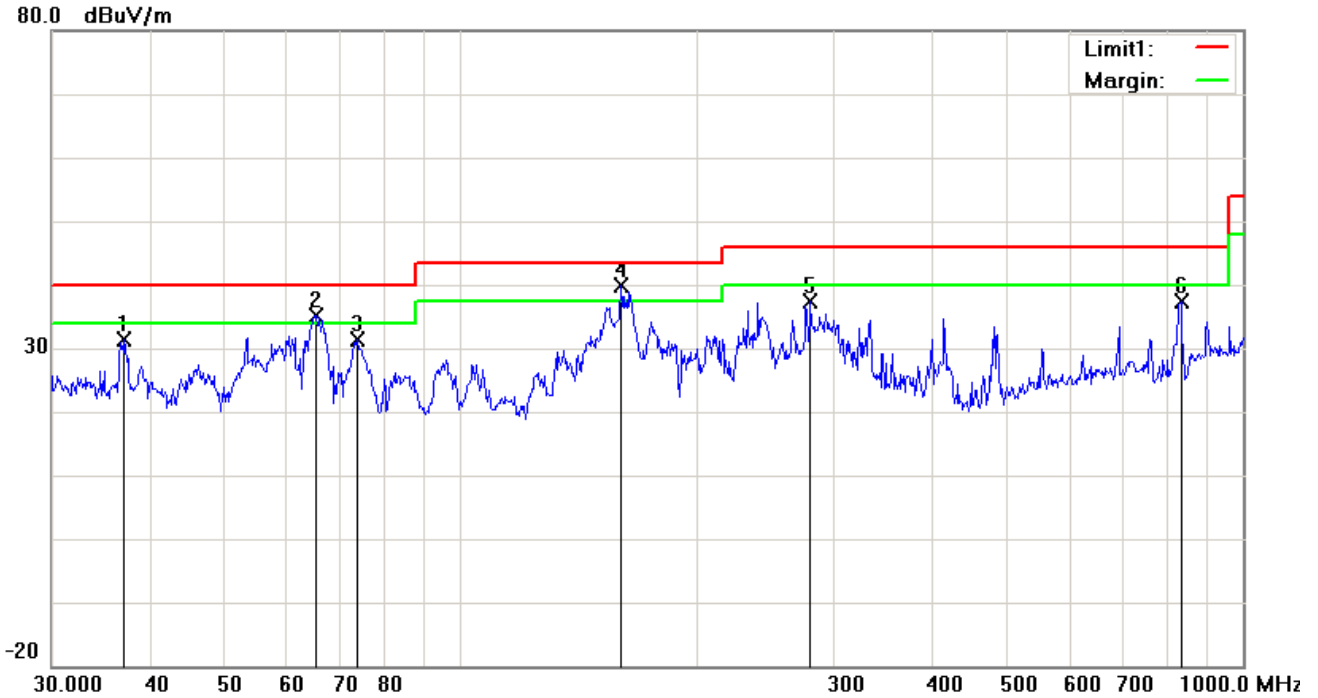
	<p>over a full rotation of the EUT) was chosen.</p> <p>b. The EUT was then rotated to the direction that gave the maximum emission.</p> <p>c. Finally, the antenna height was adjusted to the height that gave the maximum emission.</p> <p>3. The resolution bandwidth and video bandwidth of test receiver/spectrum analyzer is 120 kHz for Quasiy Peak detection at frequency below 1GHz.</p> <p>4. The resolution bandwidth of test receiver/spectrum analyzer is 1MHz and video bandwidth is 3MHz with Peak detection for Peak measurement at frequency above 1GHz.</p> <p>The resolution bandwidth of test receiver/spectrum analyzer is 1MHz and the video bandwidth with Peak detection for Average Measurement as below at frequency above 1GHz.</p> <ul style="list-style-type: none"> ■ 1 kHz (Duty cycle < 98%) □ 10 Hz (Duty cycle > 98%) <p>5. Steps 2 and 3 were repeated for the next frequency point, until all selected frequency points were measured.</p>
Remark	
Result	<input checked="" type="checkbox"/> Pass <input type="checkbox"/> Fail

Test Data Yes N/A

Test Plot Yes (See below) N/A

Test Mode 1:	USB Mode
---------------------	-----------------

Below 1GHz

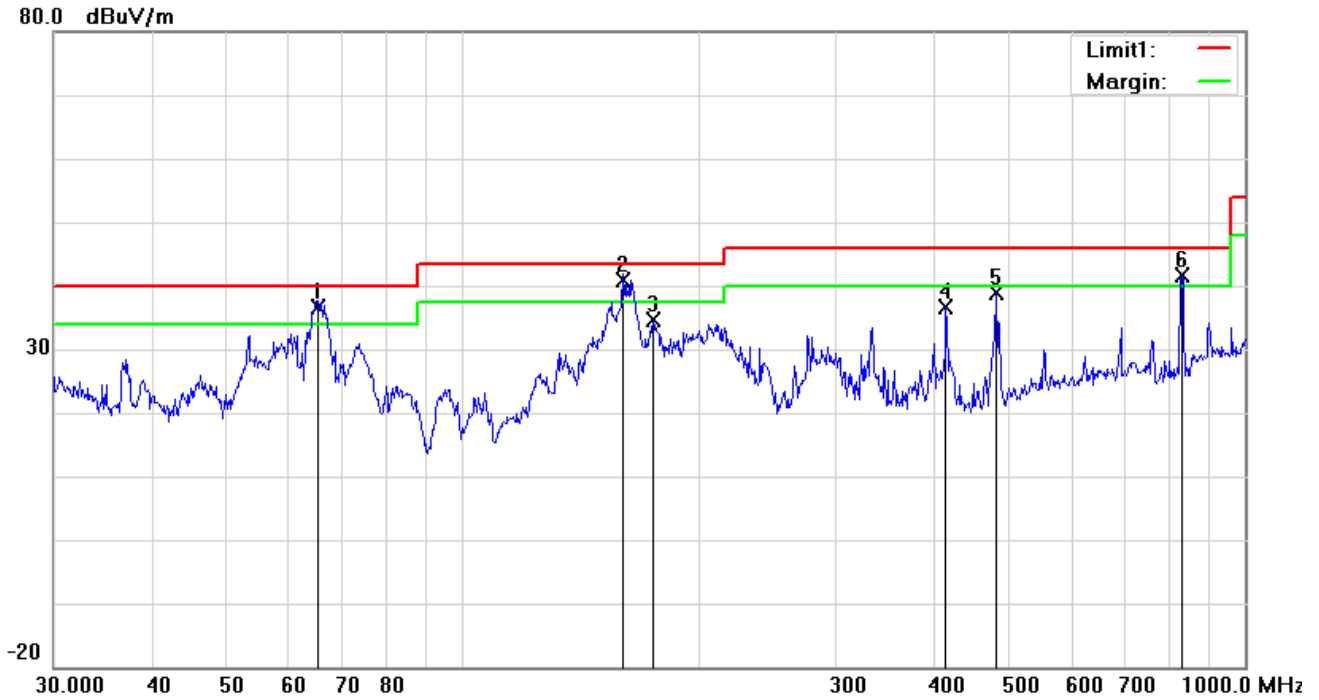


Test Data

Horizontal Polarity Plot @3m

No.	P/L	Frequency (MHz)	Reading (dBuV/m)	Detector	Corrected (dB/m)	Result (dBuV/m)	Limit (dBuV/m)	Margin (dB)	Height (cm)	Degree (°)
1	H	37.1550	36.79	peak	-5.51	31.28	40.00	-8.72	100	74
2	H	65.3432	49.17	QP	-13.93	35.24	40.00	-4.76	100	128
3	H	73.8756	45.09	peak	-13.72	31.37	40.00	-8.63	100	119
4	H	160.3457	48.13	QP	-8.31	39.82	43.50	-3.68	100	95
5	H	280.0238	45.08	peak	-7.82	37.26	46.00	-8.74	100	63
6	H	833.3171	33.83	peak	3.61	37.44	46.00	-8.56	100	103

Below 1GHz



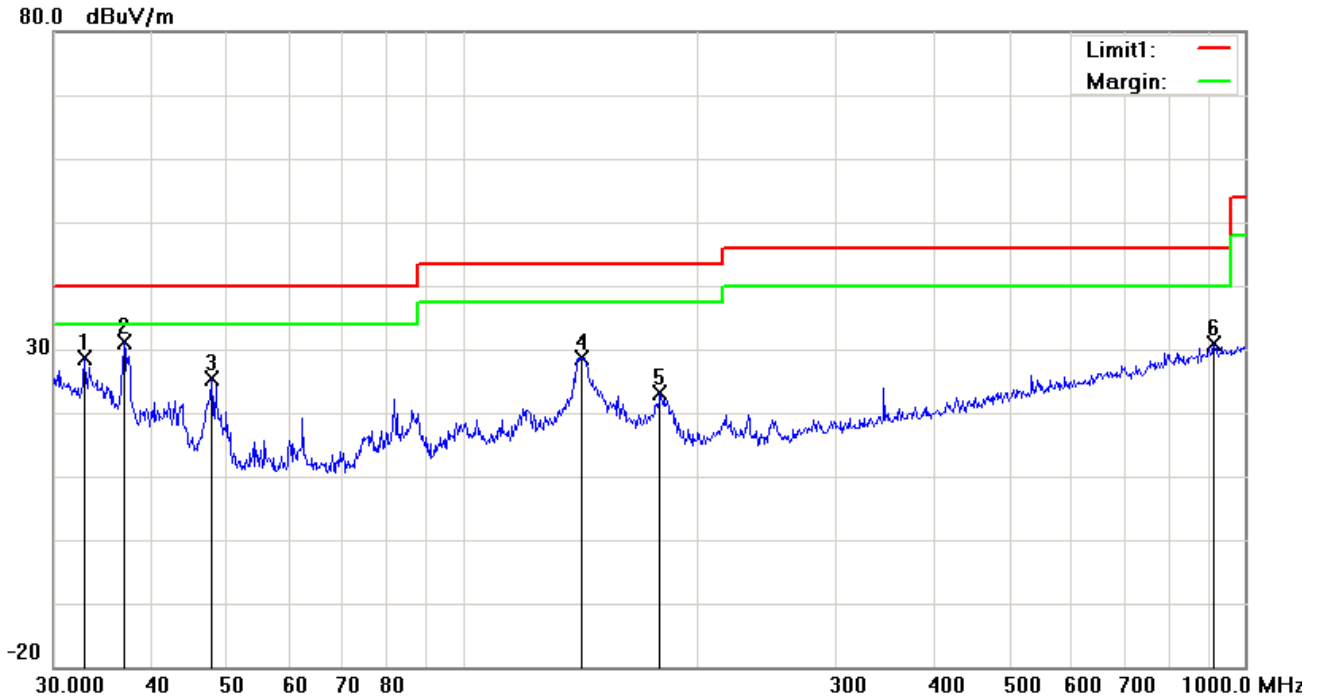
Test Data

Vertical Polarity Plot @3m

No.	P/L	Frequency (MHz)	Reading (dBuV/m)	Detector	Corrected (dB/m)	Result (dBuV/m)	Limit (dBuV/m)	Margin (dB)	Height (cm)	Degree (°)
1	V	65.3432	50.67	QP	-13.93	36.74	40.00	-3.26	100	162
2	V	160.3457	49.13	QP	-8.31	40.82	43.50	-2.68	100	149
3	V	175.0368	44.05	peak	-9.49	34.56	43.50	-8.94	100	138
4	V	414.7223	40.58	peak	-3.94	36.64	46.00	-9.36	100	209
5	V	480.5276	41.14	peak	-2.23	38.91	46.00	-7.09	100	82
6	V	830.4002	38.00	QP	3.57	41.57	46.00	-4.43	100	334

Test Mode 2: Camera Mode

Below 1GHz

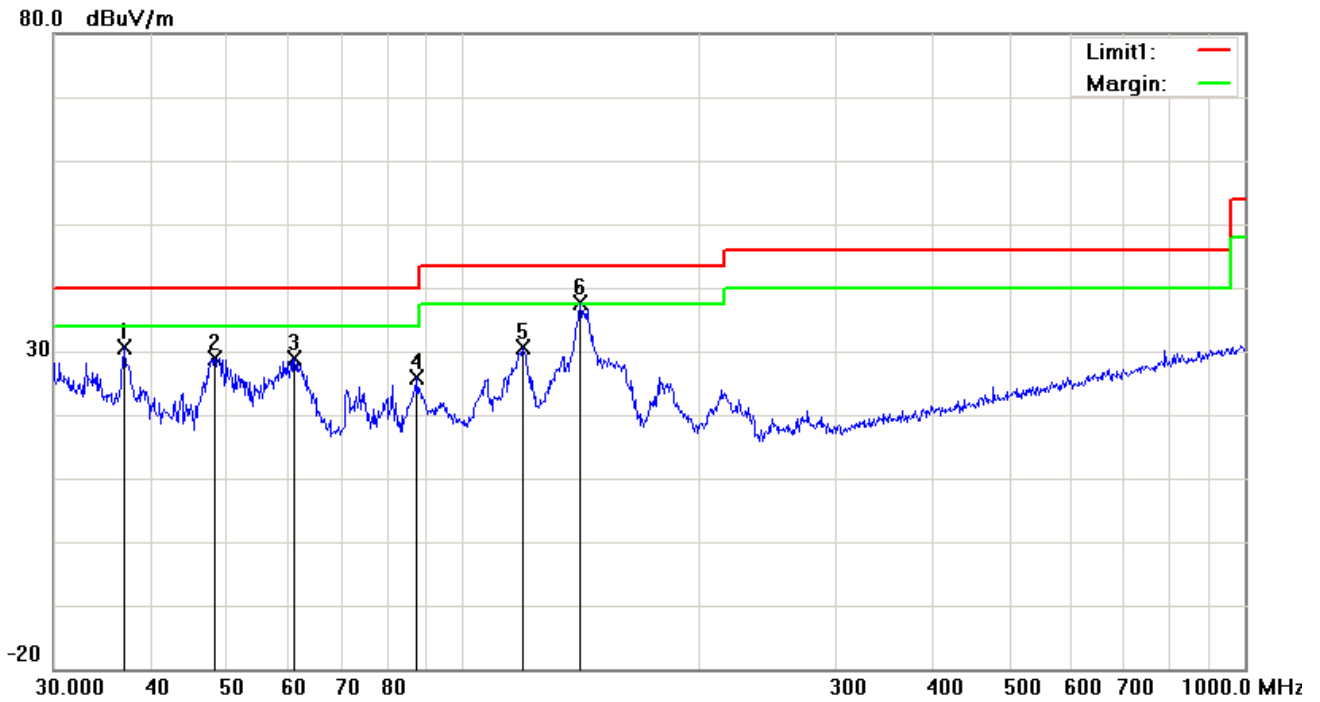


Test Data

Horizontal Polarity Plot @3m

No.	P/L	Frequency	Reading	Detector	Corrected	Result	Limit	Margin	Height	Degree
		(MHz)	(dBuV/m)		(dB/m)	(dBuV/m)	(dBuV/m)	(dB)	(cm)	()
1	H	32.8637	30.91	peak	-2.37	28.54	40.00	-11.46	100	135
2	H	36.8953	36.38	peak	-5.32	31.06	40.00	-8.94	100	102
3	H	47.8260	37.66	peak	-12.20	25.46	40.00	-14.54	100	94
4	H	141.8262	37.18	peak	-8.52	28.66	43.50	-14.84	100	72
5	H	178.7584	32.91	peak	-9.79	23.12	43.50	-20.38	100	68
6	H	912.8620	26.01	peak	4.80	30.81	46.00	-15.19	100	83

Below 1GHz



Test Data

Vertical Polarity Plot @3m

No.	P/L	Frequency	Reading	Detector	Corrected	Result	Limit	Margin	Height	Degree
		(MHz)	(dBuV/m)		(dB/m)	(dBuV/m)	(dBuV/m)	(dB)	(cm)	()
1	V	36.8953	36.02	peak	-5.32	30.70	40.00	-9.30	100	141
2	V	48.1626	41.31	peak	-12.36	28.95	40.00	-11.05	100	167
3	V	60.9176	43.05	peak	-14.29	28.76	40.00	-11.24	100	91
4	V	87.4177	39.21	peak	-13.44	25.77	40.00	-14.23	100	82
5	V	119.4361	37.91	peak	-7.40	30.51	43.50	-12.99	100	238
6	V	141.3298	46.08	QP	-8.52	37.56	43.50	-5.94	100	251

Above 1GHz

Frequency (MHz)	Amplitude (dB μ V/m)	Azimuth	Height (cm)	Polarity (H/V)	Factors (dB)	Limit (dB μ V/m)	Margin (dB)	Detector (PK/AV)
768.47	50.57	55	142	V	-22.47	74	-23.43	PK
1048.32	51.36	101	156	V	-21.68	74	-22.64	PK
1165.15	50.45	97	135	V	-23..35	74	-23.55	PK
838.45	51.69	88	250	H	-22.68	74	-22.31	PK
1267.72	51.72	120	222	H	-22.57	74	-22.28	PK
1712.74	50.67	115	173	H	-22.83	74	-23.33	PK

*Note1: The highest frequency of the EUT is 2480 MHz, so the testing has been conformed to $5*2472MHz=12,360MHz$.*

Note2: The frequency that above 3GHz is mainly from the environment noise.

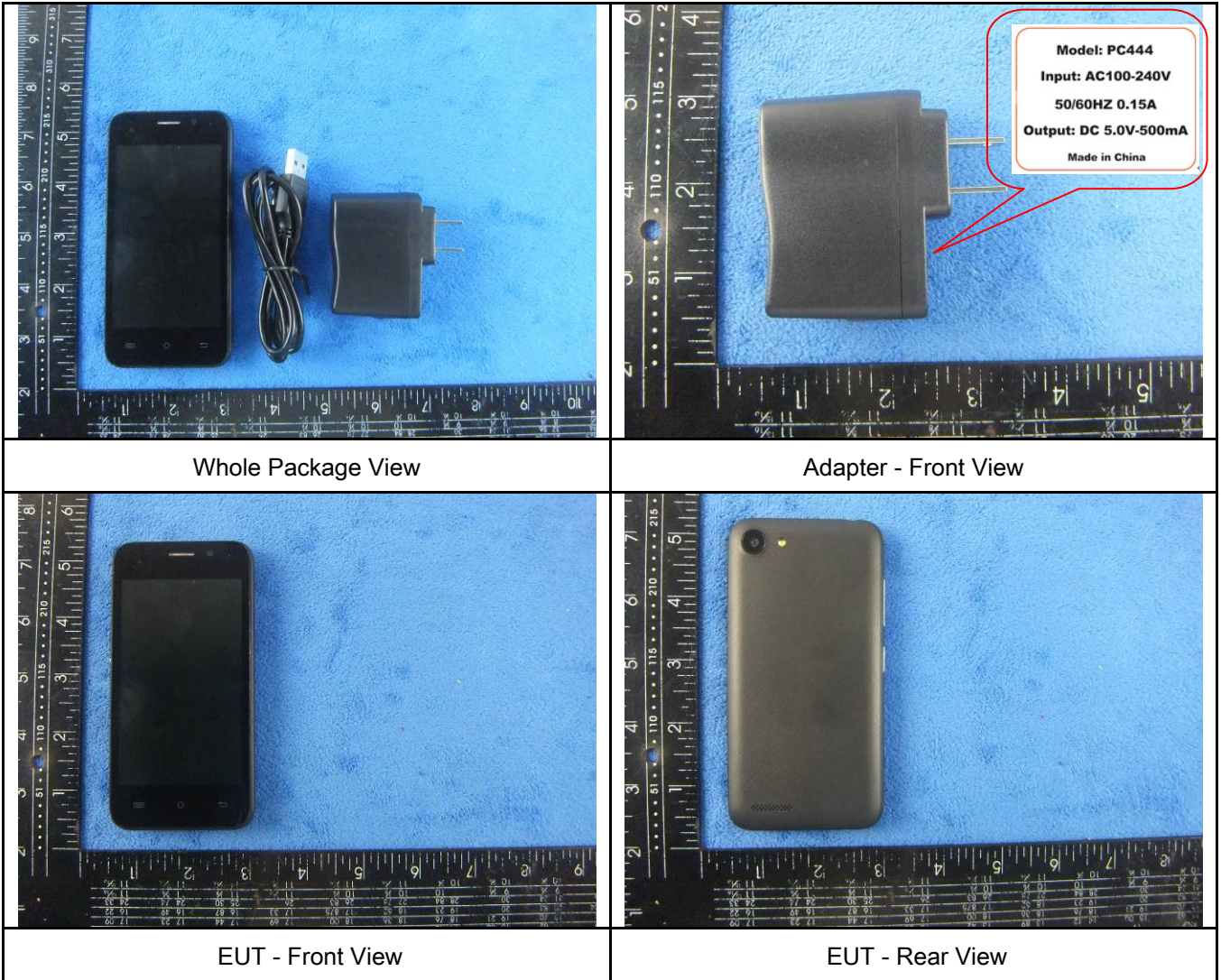
Note3: The AV measurement performed, more than 20dB below limit so AV test data was not presented.

Annex A. TEST INSTRUMENT

Instrument	Model	Serial #	Cal Date	Cal Due	In use
AC Line Conducted Emissions					
EMI test receiver	ESCS30	8471241027	09/16/2016	09/15/2017	<input checked="" type="checkbox"/>
Line Impedance Stabilization Network	LI-125A	191106	09/24/2016	09/23/2017	<input checked="" type="checkbox"/>
Line Impedance Stabilization Network	LI-125A	191107	09/24/2016	09/23/2017	<input checked="" type="checkbox"/>
LISN	ISN T800	34373	09/24/2016	09/23/2017	<input checked="" type="checkbox"/>
Transient Limiter	LIT-153	531118	08/31/2016	08/30/2017	<input checked="" type="checkbox"/>
Radiated Emissions					
EMI test receiver	ESL6	100262	09/16/2016	09/15/2017	<input checked="" type="checkbox"/>
OPT 010 AMPLIFIER (0.1-1300MHz)	8447E	2727A02430	08/31/2016	08/30/2017	<input checked="" type="checkbox"/>
Microwave Preamplifier (1 ~ 26.5GHz)	8449B	3008A02402	03/24/2016	03/23/2017	<input checked="" type="checkbox"/>
Bilog Antenna (30MHz~6GHz)	JB6	A110712	09/20/2016	09/19/2017	<input checked="" type="checkbox"/>
Double Ridge Horn Antenna	AH-118	71259	09/23/2016	09/22/2017	<input checked="" type="checkbox"/>

Annex B. EUT And Test Setup Photographs

Annex B.i. Photograph: EUT External Photo

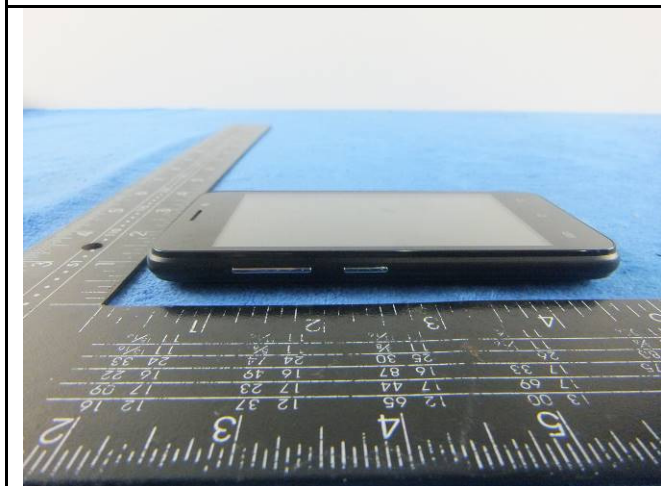




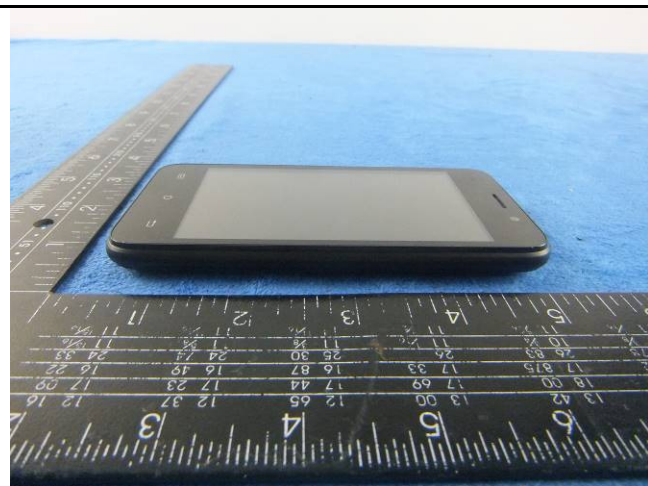
EUT - Top View



EUT - Bottom View



EUT - Left View



EUT - Right View

Annex B.ii. Photograph: EUT Internal Photo



Cover Off - Top View 1



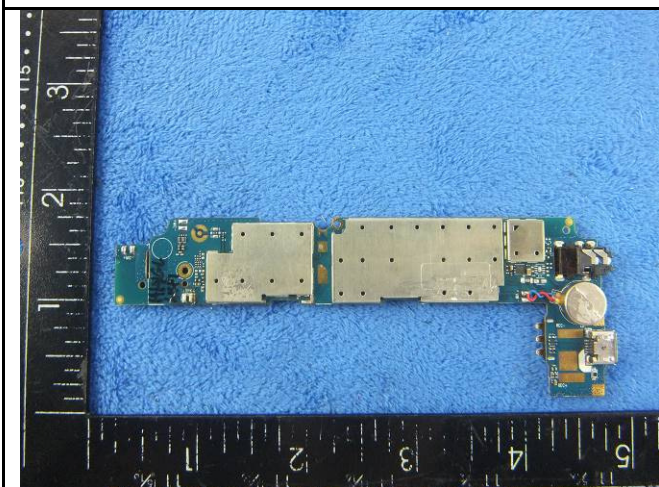
Cover Off - Top View 2



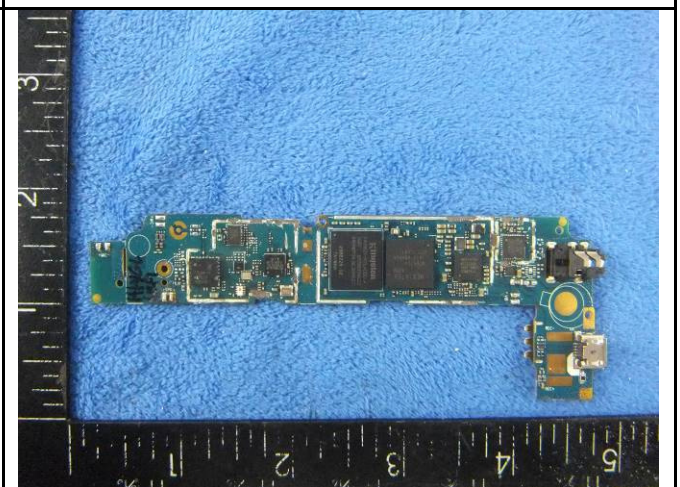
Battery - Front View



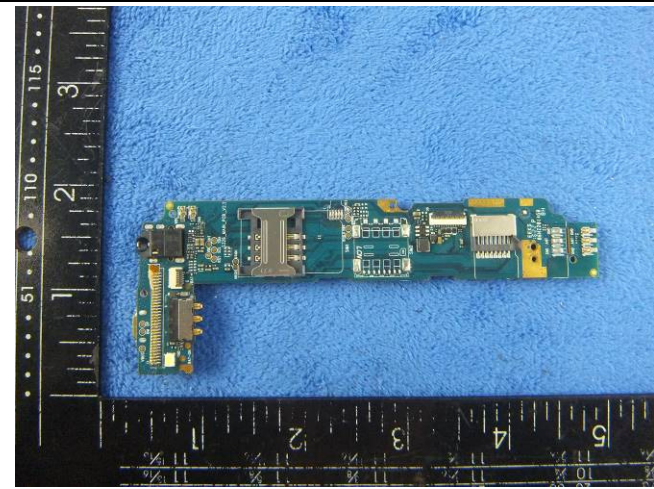
Battery - Rear View



Mainboard with Shielding - Front View



Mainboard without Shielding - Front View



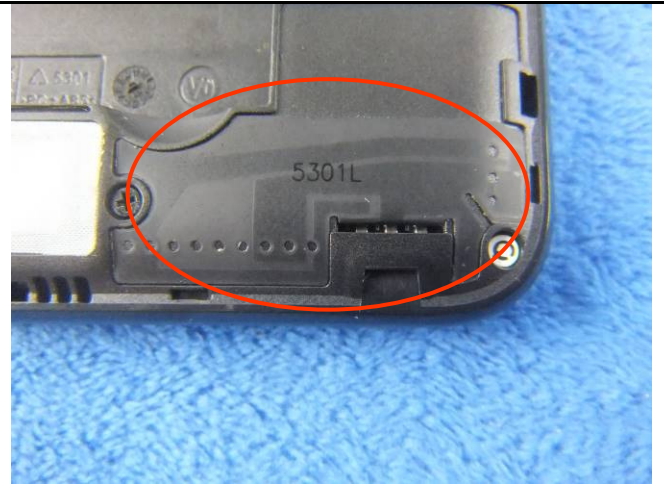
Mainboard - Rear View



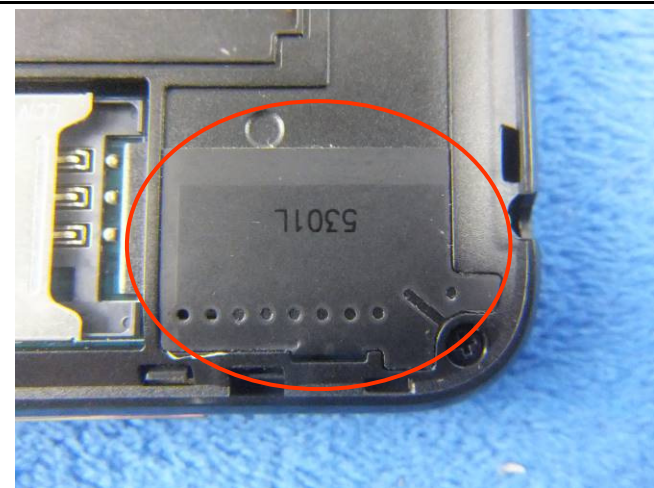
LCD - Front View



LCD - Rear View



GSM/PCS/UMTS-FDD Antenna View



WIFI/BT/BLE - Antenna View

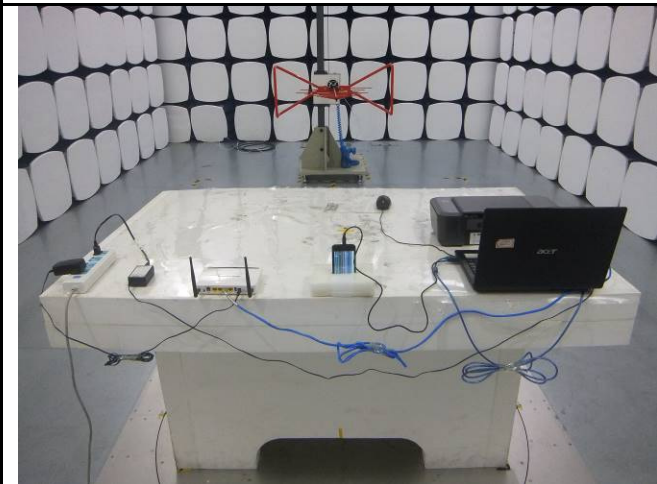
Annex B.iii. Photograph: Test Setup Photo



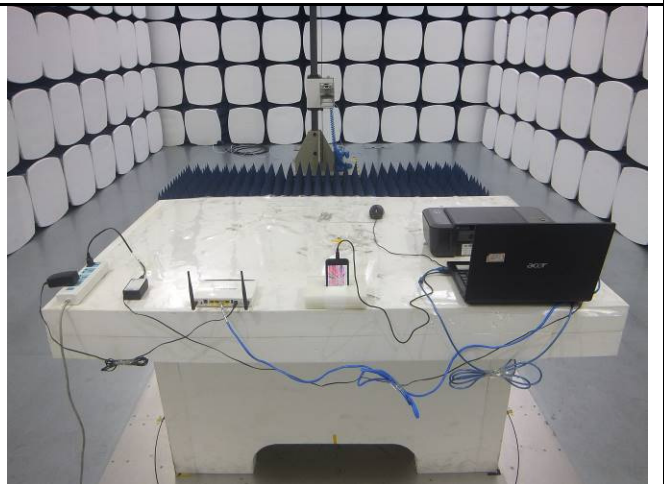
Conducted Emissions Test Setup – Front View



Conducted Emissions Test Setup – Side View



Radiated Emissions Test Setup Below 1GHz

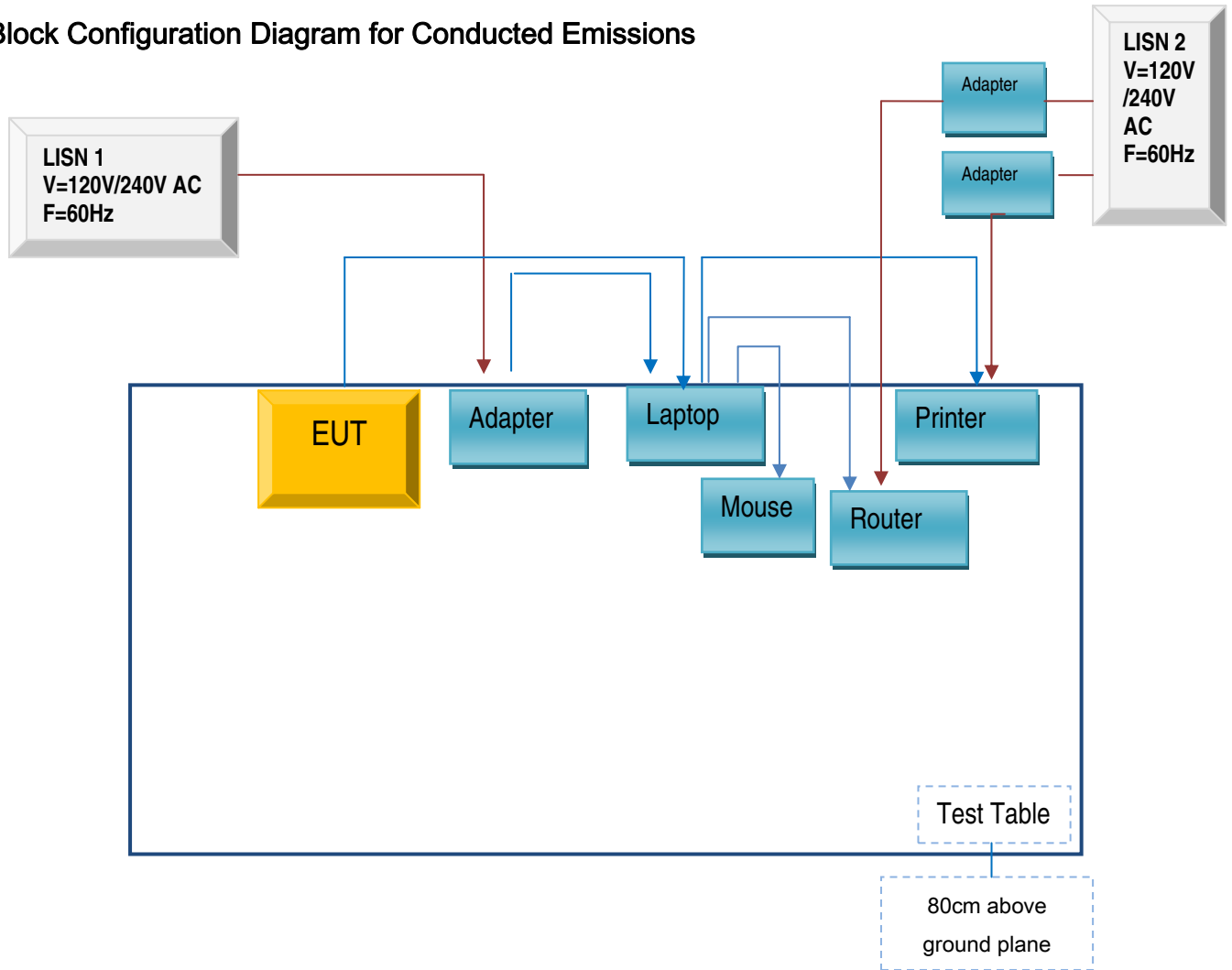


Radiated Emissions Test Setup Above 1GHz

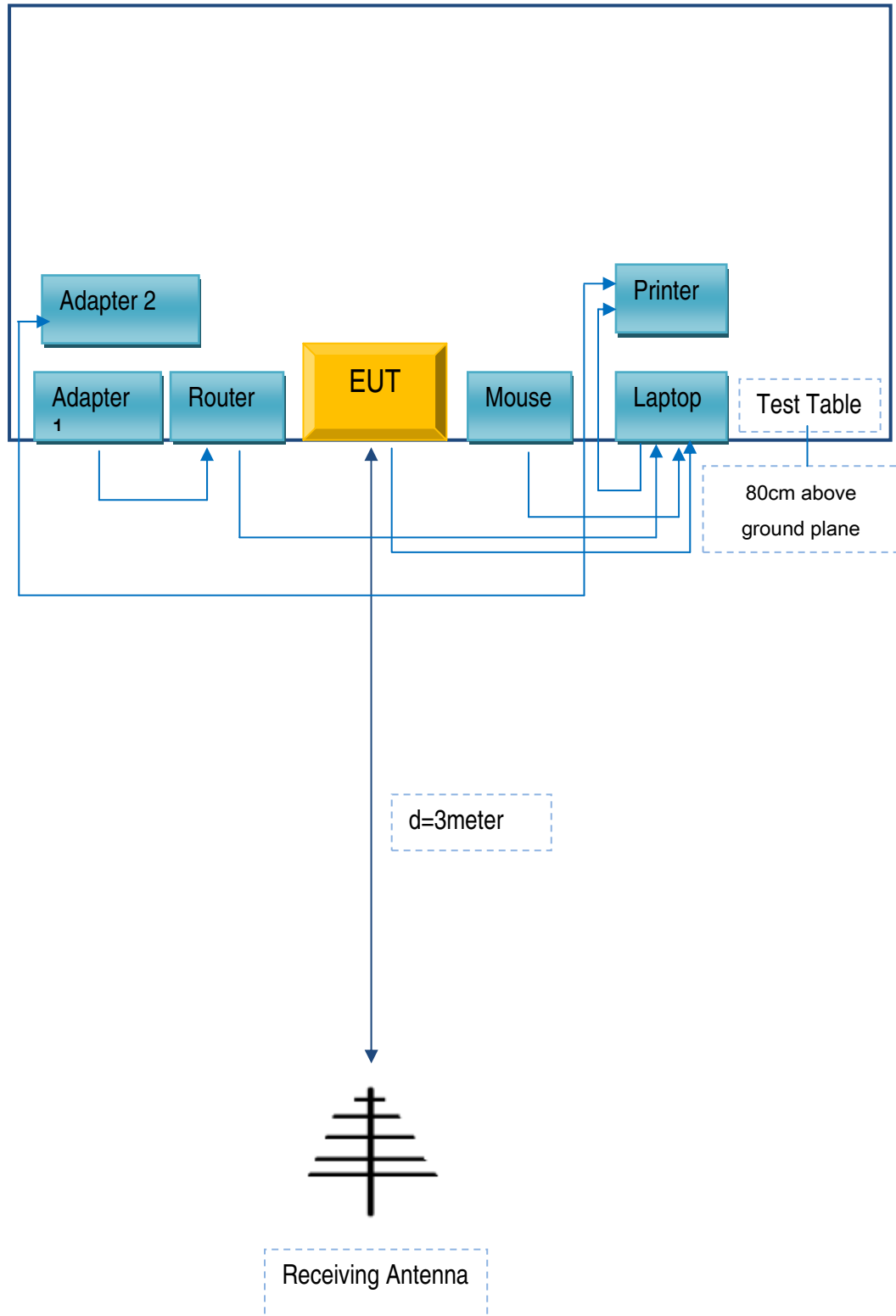
Annex C. TEST SETUP AND SUPPORTING EQUIPMENT

Annex C.ii. TEST SET UP BLOCK

Block Configuration Diagram for Conducted Emissions



Block Configuration Diagram for Radiated Emissions



Annex C. ii. SUPPORTING EQUIPMENT DESCRIPTION

The following is a description of supporting equipment and details of cables used with the EUT.

Supporting Equipment:

Manufacturer	Equipment Description	Model	Serial No
Lenovo	Laptop	E40	LR-1EHRX
GOLDWEB	Router	R102	1202032094
SMT TELECOMM HK LIMITED	Adapter	PC444	X444
Lenovo	AC Adapter	42T4416	21D9JU
HP	Printer	VCVRA-1003	CN36M19JWX
DELL	Mouse	E100	912NMTUT41481
BULL	Socket	GN-403	GN201203

Supporting Cable:

Cable type	Shield Type	Ferrite Core	Length	Serial No
USB Cable	Un-shielding	No	2m	JX120051274
USB Cable	Un-shielding	No	2m	JX110725002
RJ45 Cable	Un-shielding	No	2m	KX156327541
Router Power cable	Un-shielding	No	2m	13274630Z
Printer Power cable	Un-shielding	No	2m	127581031
Power Cable	Un-shielding	No	0.8m	GT211032

Test Report	16071229-FCC-E
Page	35 of 36

Annex D. User Manual / Block Diagram / Schematics / Partlist

Please see attachment

Test Report	16071229-FCC-E
Page	36 of 36

Annex E. DECLARATION OF SIMILARITY

N/A