

EMC TEST REPORT



Report No.: 16070657-FCC-E

Supersede Report No.:N/A

Applicant	SMT TELECOMM HK LIMITED	
Product Name	Mobile Phone	
Model No.	X410	
Serial No.	N/A	
Test Standard	FCC Part 15 Subpart B Class B:2014, ANSI C63.4: 2014	
Test Date	November 24 to December 04, 2015	
Issue Date	June 07,2016	
Test Result	<input checked="" type="checkbox"/> Pass <input type="checkbox"/> Fail	
Equipment complied with the specification	<input checked="" type="checkbox"/>	
Equipment did not comply with the specification	<input type="checkbox"/>	
<i>Winnie Zhang</i>	<i>David Huang</i>	
Winnie Zhang Test Engineer	David Huang Checked By	
This test report may be reproduced in full only Test result presented in this test report is applicable to the tested sample only		

Issued by:

SIEMIC (SHENZHEN-CHINA) LABORATORIES

Zone A, Floor 1, Building 2 Wan Ye Long Technology Park

South Side of Zhoushi Road, Bao' an District, Shenzhen, Guangdong China 518108

Phone: +86 0755 2601 4629801 Email: China@siemic.com.cn

Laboratories Introduction

SIEMIC, headquartered in the heart of Silicon Valley, with superior facilities in US and Asia, is one of the leading independent testing and certification facilities providing customers with one-stop shop services for Compliance Testing and Global Certifications.



In addition to testing and certification, SIEMIC provides initial design reviews and compliance management throughout a project. Our extensive experience with China, Asia Pacific, North America, European, and International compliance requirements, assures the fastest, most cost effective way to attain regulatory compliance for the global markets.

Accreditations for Conformity Assessment

Country/Region	Scope
USA	EMC, RF/Wireless, SAR, Telecom
Canada	EMC, RF/Wireless, SAR, Telecom
Taiwan	EMC, RF, Telecom, SAR, Safety
Hong Kong	RF/Wireless, SAR, Telecom
Australia	EMC, RF, Telecom, SAR, Safety
Korea	EMI, EMS, RF, SAR, Telecom, Safety
Japan	EMI, RF/Wireless, SAR, Telecom
Singapore	EMC, RF, SAR, Telecom
Europe	EMC, RF, SAR, Telecom, Safety

Test Report	16070657-FCC-E
Page	3 of 30

This page has been left blank intentionally.

CONTENTS

1. REPORT REVISION HISTORY	5
2. CUSTOMER INFORMATION	5
3. TEST SITE INFORMATION	5
4. EQUIPMENT UNDER TEST (EUT) INFORMATION	6
5. TEST SUMMARY	8
6. MEASUREMENTS, EXAMINATION AND DERIVED RESULTS	9
6.1 AC POWER LINE CONDUCTED EMISSIONS	9
6.2 RADIATED EMISSIONS	15
ANNEX A. TEST INSTRUMENT	20
ANNEX B. EUT AND TEST SETUP PHOTOGRAPHS	21
ANNEX C. TEST SETUP AND SUPPORTING EQUIPMENT	26
ANNEX D. USER MANUAL / BLOCK DIAGRAM / SCHEMATICS / PARTLIST	29
ANNEX E. DECLARATION OF SIMILARITY	30

1. Report Revision History

Report No.	Report Version	Description	Issue Date
16070657-FCC-E	NONE	Original	June 07,2016

2. Customer information

Applicant Name	SMT TELECOMM HK LIMITED
Applicant Add	Unit C 8/F, CHARMHILL CTR 50 HILLWOOD RD TST KL
Manufacturer	SMT TELECOMM HK LIMITED
Manufacturer Add	Unit C 8/F, CHARMHILL CTR 50 HILLWOOD RD TST KL

3. Test site information

Lab performing tests	SIEMIC (Shenzhen-China) LABORATORIES
Lab Address	Zone A, Floor 1, Building 2 Wan Ye Long Technology Park South Side of Zhoushi Road, Bao' an District, Shenzhen, Guangdong China 518108
FCC Test Site No.	718246
IC Test Site No.	4842E-1
Test Software	Radiated Emission Program-To Shenzhen v2.0

4. Equipment under Test (EUT) Information

Description of EUT:	Mobile Phone
Main Model:	X410
Serial Model:	N/A
Date EUT received:	November 23,2015
Test Date(s):	November 24 to December 04, 2015
Antenna Gain:	<p>GSM850: -1.2dBi PCS1900: -0.9dBi UMTS-FDD Band V: -1.1dBi UMTS-FDD Band II: -1.0dBi Bluetooth/BLE: -0.5dBi WIFI: -0.5dBi GPS: 0dBi</p>
Type of Modulation:	<p>GSM / GPRS: GMSK UMTS-FDD: QPSK, 16QAM 802.11b/g/n: DSSS, OFDM Bluetooth: GFSK, π /4DQPSK, 8DPSK BLE: GFSK GPS:BPSK</p>
RF Operating Frequency (ies):	<p>GSM850 TX: 824.2 ~ 848.8 MHz; RX: 869.2 ~ 893.8 MHz PCS1900 TX: 1850.2 ~ 1909.8 MHz; RX: 1930.2 ~ 1989.8 MHz UMTS-FDD Band V TX: 826.4 ~ 846.6 MHz; RX: 871.4 ~ 891.6 MHz UMTS-FDD Band II TX:1852.4 ~ 1907.6 MHz; RX: 1932.4 ~ 1987.6 MHz WIFI:802.11b/g/n(20M): 2412-2462 MHz WIFI:802.11n(40M): 2422-2452 MHz Bluetooth& BLE: 2402-2480 MHz GPS RX:1575.42 MHz</p>

Number of Channels:	GSM 850: 124CH PCS1900: 299CH UMTS-FDD Band V : 102CH UMTS-FDD Band II : 277CH WIFI :802.11b/g/n(20M): 11CH WIFI :802.11n(40M): 7CH Bluetooth: 79CH BLE: 40CH GPS:1CH
Input Power:	Battery: Model:BP X410 Standard Voltage:DC3.7V Rated Capacity:1200mAh,4.44Wh Charging Linit Voltage : 4.2V Adapter: Model:PC X410 Input: AC100-240V; 50/60Hz; 0.15A Output: DC 5.0V,500mA
Port:	Power Port, Earphone Port, USB Port
GPRS/EGPRS Multi-slot class	8/10/12
Trade Name :	N/A
FCC ID:	2AIMEX410

5. Test Summary

The product was tested in accordance with the following specifications.

All testing has been performed according to below product classification:

FCC Rules	Description of Test	Result
§15.107; ANSI C63.4: 2014	AC Power Line Conducted Emissions	Compliance
§15.109; ANSI C63.4: 2014	Radiated Emissions	Compliance

Measurement Uncertainty

Emissions		
Test Item	Description	Uncertainty
Band Edge and Radiated Spurious Emissions	Confidence level of approximately 95% (in the case where distributions are normal), with a coverage factor of 2 (for EUTs < 0.5m X 0.5m X 0.5m)	+5.6dB/-4.5dB
-	-	-

6. Measurements, Examination And Derived Results

6.1 AC Power Line Conducted Emissions

Temperature	25°C
Relative Humidity	52%
Atmospheric Pressure	1028mbar
Test date :	December 28, 2015
Tested By :	Winnie Zhang

Requirement(s):

Spec	Item	Requirement	Applicable														
47CFR§15.107	a)	<p>For Low-power radio-frequency devices that is designed to be connected to the public utility (AC) power line, the radio frequency voltage that is conducted back onto the AC power line on any frequency or frequencies, within the band 150 kHz to 30 MHz, shall not exceed the limits in the following table, as measured using a 50 [mu] H/50 ohms line impedance stabilization network (LISN). The lower limit applies at the boundary between the frequencies ranges.</p> <table border="1"> <thead> <tr> <th rowspan="2">Frequency ranges (MHz)</th> <th colspan="2">Limit (dBµV)</th> </tr> <tr> <th>QP</th> <th>Average</th> </tr> </thead> <tbody> <tr> <td>0.15 ~ 0.5</td> <td>66 – 56</td> <td>56 – 46</td> </tr> <tr> <td>0.5 ~ 5</td> <td>56</td> <td>46</td> </tr> <tr> <td>5 ~ 30</td> <td>60</td> <td>50</td> </tr> </tbody> </table>	Frequency ranges (MHz)	Limit (dBµV)		QP	Average	0.15 ~ 0.5	66 – 56	56 – 46	0.5 ~ 5	56	46	5 ~ 30	60	50	<input checked="" type="checkbox"/>
Frequency ranges (MHz)	Limit (dBµV)																
	QP	Average															
0.15 ~ 0.5	66 – 56	56 – 46															
0.5 ~ 5	56	46															
5 ~ 30	60	50															

Test Setup	<p style="text-align: center;"> Note: 1.Support units were connected to second LISN . 2.Both of LISNs (AMN) are 80cm from EUT and at least 80cm from other units and other metal planes support units. </p>
------------	--

Procedure	<ol style="list-style-type: none"> The EUT and supporting equipment were set up in accordance with the requirements of the standard on top of a 1.5m x 1m x 0.8m high, non-metallic table. The power supply for the EUT was fed through a 50Ω /50mH EUT LISN, connected to filtered mains.
-----------	--

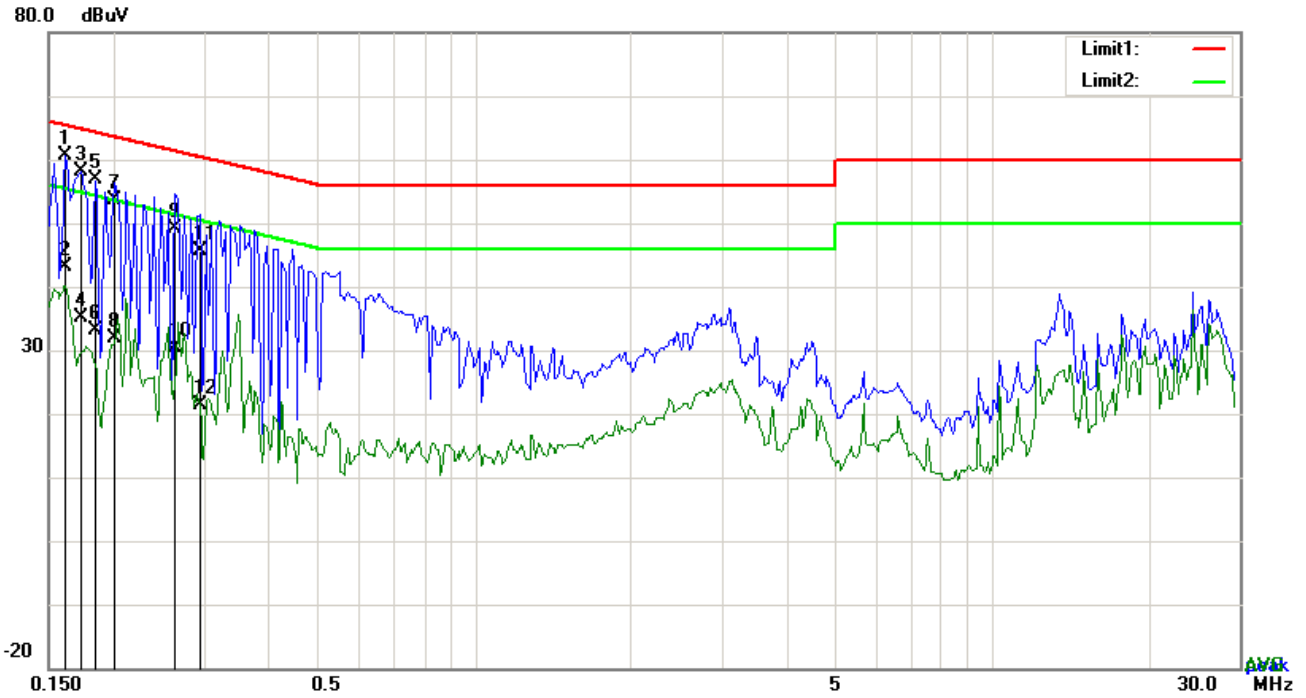
Test Report	16070657-FCC-E
Page	10 of 30

	<ol style="list-style-type: none"> 3. The RF OUT of the EUT LISN was connected to the EMI test receiver via a low-loss coaxial cable. 4. All other supporting equipment were powered separately from another main supply. 5. The EUT was switched on and allowed to warm up to its normal operating condition. 6. A scan was made on the NEUTRAL line (for AC mains) or Earth line (for DC power) over the required frequency range using an EMI test receiver. 7. High peaks, relative to the limit line, The EMI test receiver was then tuned to the selected frequencies and the necessary measurements made with a receiver bandwidth setting of 10 kHz. 8. Step 7 was then repeated for the LIVE line (for AC mains) or DC line (for DC power).
Remark	
Result	<input checked="" type="checkbox"/> Pass <input type="checkbox"/> Fail

Test Data Yes N/A

Test Plot Yes (See below) N/A

Test Mode 1 : USB Mode

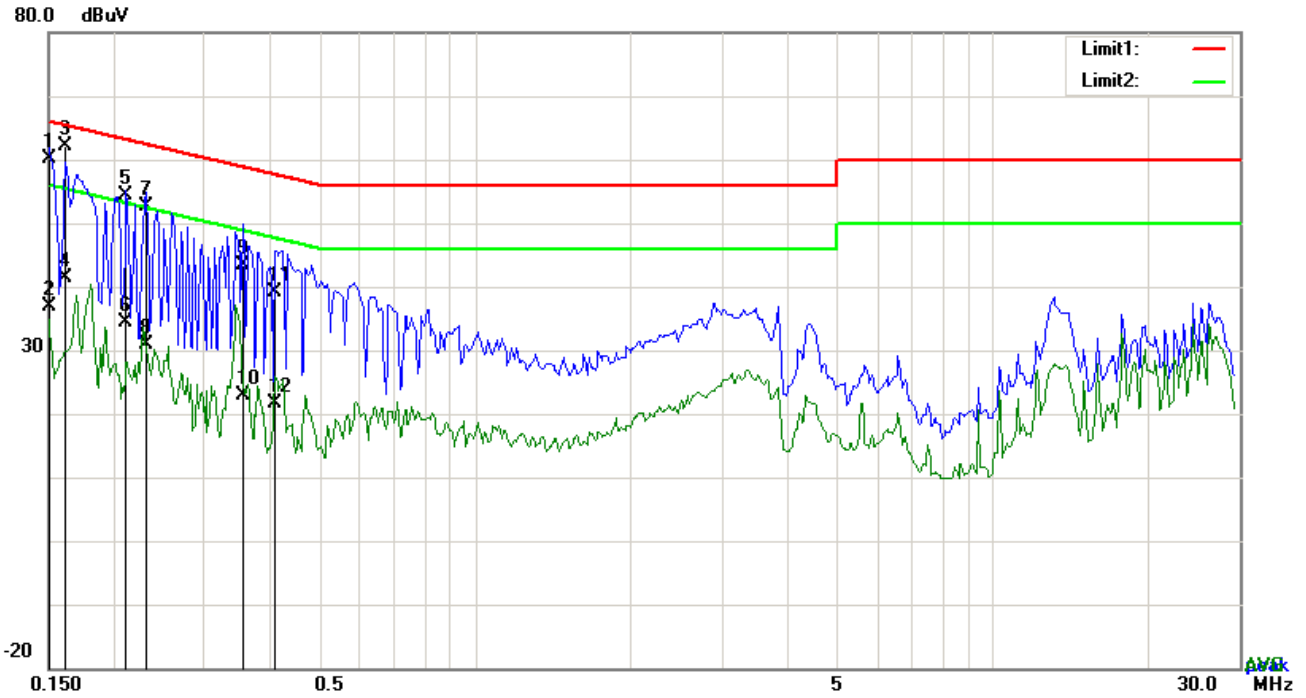


Test Data

Phase Line Plot at 120Vac, 60Hz

No.	P/L	Frequency	Reading	Detector	Corrected	Result	Limit	Margin
		(MHz)	(dBuV)		(dB}	(dBuV)	(dBuV)	(dB)
1	L1	0.1617	50.63	QP	10.03	60.66	65.38	-4.72
2	L1	0.1617	33.07	AVG	10.03	43.10	55.38	-12.28
3	L1	0.1734	48.17	QP	10.03	58.20	64.80	-6.60
4	L1	0.1734	25.10	AVG	10.03	35.13	54.80	-19.67
5	L1	0.1851	46.84	QP	10.03	56.87	64.25	-7.38
6	L1	0.1851	23.08	AVG	10.03	33.11	54.25	-21.14
7	L1	0.2007	43.61	QP	10.03	53.64	63.58	-9.94
8	L1	0.2007	21.90	AVG	10.03	31.93	53.58	-21.65
9	L1	0.2631	39.04	QP	10.03	49.07	61.33	-12.26
10	L1	0.2631	20.43	AVG	10.03	30.46	51.33	-20.87
11	L1	0.2943	35.67	QP	10.03	45.70	60.40	-14.70
12	L1	0.2943	11.38	AVG	10.03	21.41	50.40	-28.99

Test Mode : USB Mode

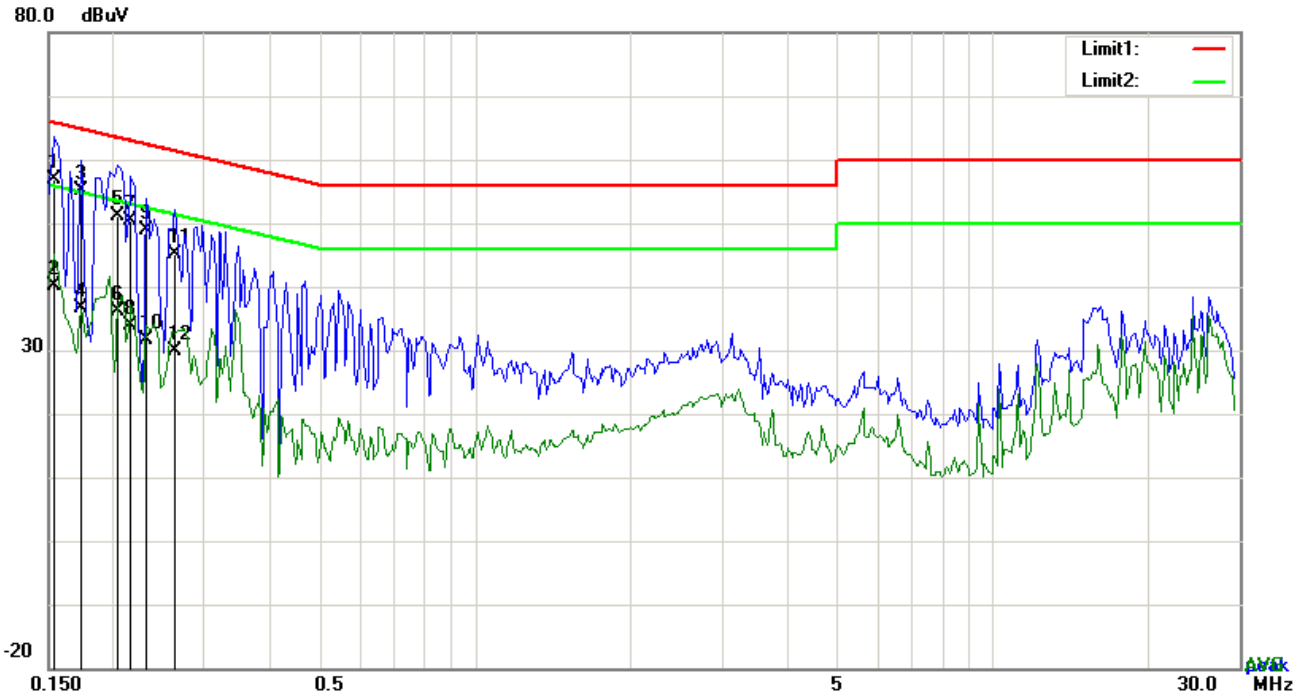


Test Data

Phase Neutral Plot at 120Vac, 60Hz

No.	P/L	Frequency	Reading	Detector	Corrected	Result	Limit	Margin
		(MHz)	(dBuV)		(dB}	(dBuV)	(dBuV)	(dB)
1	N	0.1500	49.99	QP	10.02	60.01	66.00	-5.99
2	N	0.1500	26.83	AVG	10.02	36.85	56.00	-19.15
3	N	0.1617	52.07	QP	10.02	62.09	65.38	-3.29
4	N	0.1617	31.43	AVG	10.02	41.45	55.38	-13.93
5	N	0.2124	44.41	QP	10.02	54.43	63.11	-8.68
6	N	0.2124	24.30	AVG	10.02	34.32	53.11	-18.79
7	N	0.2319	42.61	QP	10.02	52.63	62.38	-9.75
8	N	0.2319	20.81	AVG	10.02	30.83	52.38	-21.55
9	N	0.3567	33.26	QP	10.02	43.28	58.80	-15.52
10	N	0.3567	12.95	AVG	10.02	22.97	48.80	-25.83
11	N	0.4113	29.15	QP	10.02	39.17	57.62	-18.45
12	N	0.4113	11.73	AVG	10.02	21.75	47.62	-25.87

Test Mode :	USB Mode
--------------------	-----------------

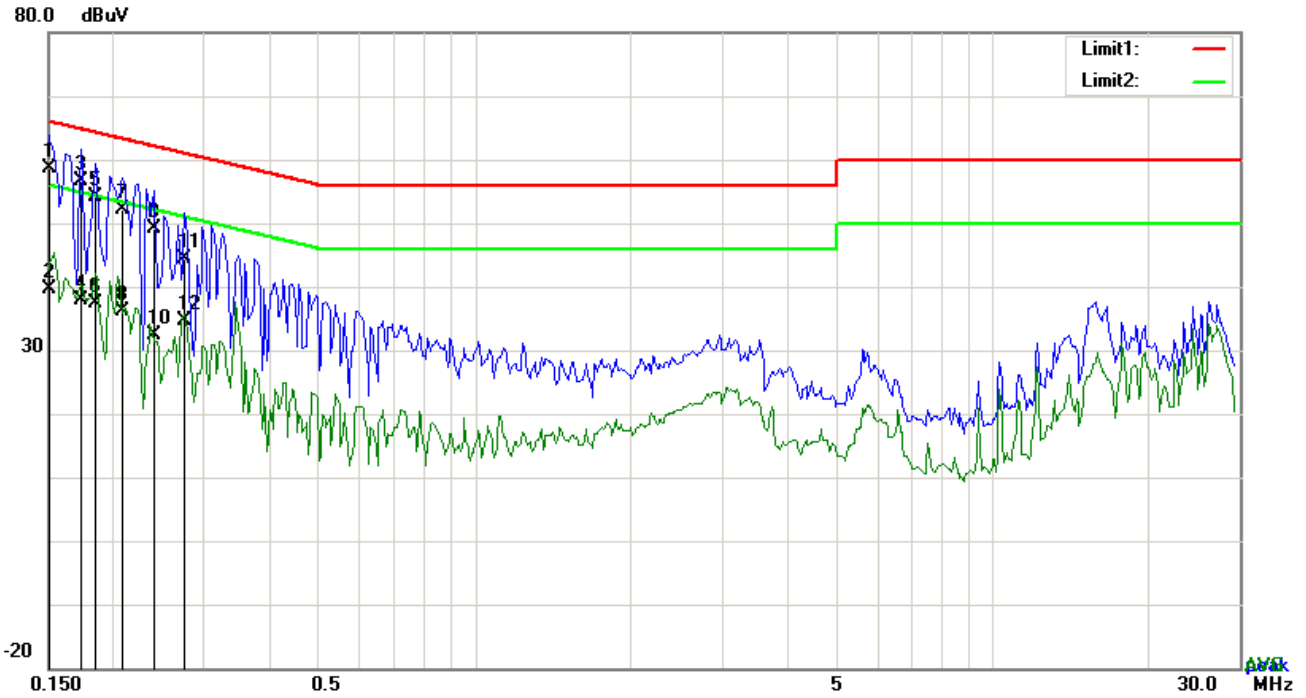


Test Data

Phase Line Plot at 240Vac, 60Hz

No.	P/L	Frequency	Reading	Detector	Corrected	Result	Limit	Margin
		(MHz)	(dBuV)		(dB}	(dBuV)	(dBuV)	(dB)
1	L1	0.1539	46.95	QP	10.03	56.98	65.79	-8.81
2	L1	0.1539	29.99	AVG	10.03	40.02	55.79	-15.77
3	L1	0.1734	45.05	QP	10.03	55.08	64.80	-9.72
4	L1	0.1734	26.64	AVG	10.03	36.67	54.80	-18.13
5	L1	0.2046	41.22	QP	10.03	51.25	63.42	-12.17
6	L1	0.2046	26.02	AVG	10.03	36.05	53.42	-17.37
7	L1	0.2163	40.37	QP	10.03	50.40	62.96	-12.56
8	L1	0.2163	23.92	AVG	10.03	33.95	52.96	-19.01
9	L1	0.2319	38.77	QP	10.03	48.80	62.38	-13.58
10	L1	0.2319	21.56	AVG	10.03	31.59	52.38	-20.79
11	L1	0.2631	35.02	QP	10.03	45.05	61.33	-16.28
12	L1	0.2631	19.77	AVG	10.03	29.80	51.33	-21.53

Test Mode : USB Mode



Test Data

Phase Neutral Plot at 240Vac, 60Hz

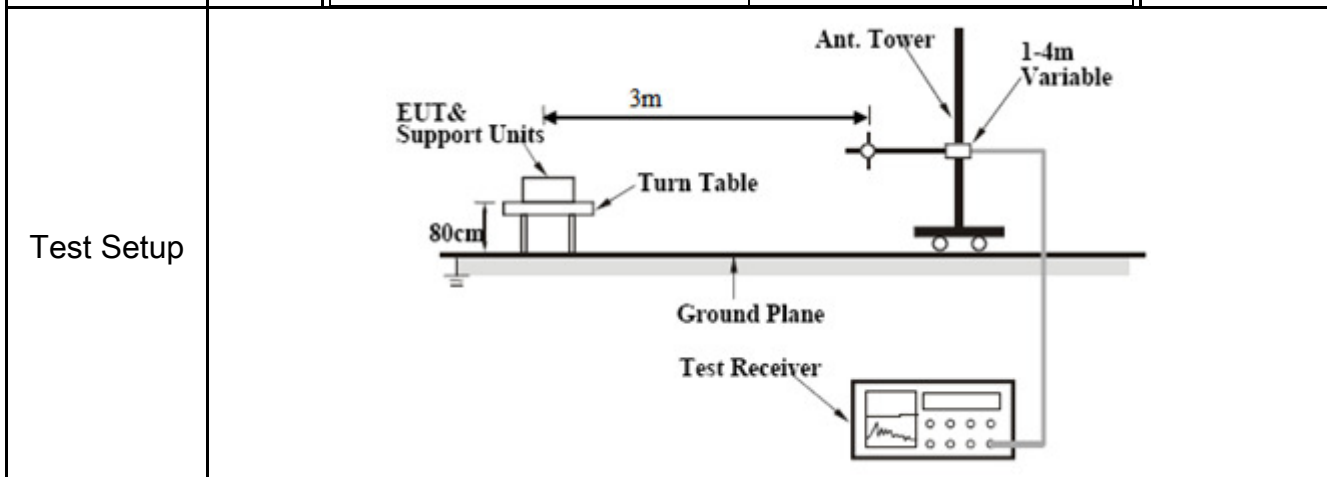
No.	P/L	Frequency	Reading	Detector	Corrected	Result	Limit	Margin
		(MHz)	(dBuV)		(dB}	(dBuV)	(dBuV)	(dB)
1	N	0.1500	48.65	QP	10.02	58.67	66.00	-7.33
2	N	0.1500	29.56	AVG	10.02	39.58	56.00	-16.42
3	N	0.1734	46.58	QP	10.02	56.60	64.80	-8.20
4	N	0.1734	27.77	AVG	10.02	37.79	54.80	-17.01
5	N	0.1851	44.23	QP	10.02	54.25	64.25	-10.00
6	N	0.1851	27.42	AVG	10.02	37.44	54.25	-16.81
7	N	0.2085	42.23	QP	10.02	52.25	63.26	-11.01
8	N	0.2085	26.21	AVG	10.02	36.23	53.26	-17.03
9	N	0.2397	39.20	QP	10.02	49.22	62.11	-12.89
10	N	0.2397	22.45	AVG	10.02	32.47	52.11	-19.64
11	N	0.2748	34.41	QP	10.02	44.43	60.97	-16.54
12	N	0.2748	24.53	AVG	10.02	34.55	50.97	-16.42

6.2 Radiated Emissions

Temperature	22°C
Relative Humidity	54%
Atmospheric Pressure	1021mbar
Test date :	December 21, 2015
Tested By :	Winnie Zhang

Requirement(s):

Spec	Item	Requirement	Applicable										
47CFR§15.109(d)	a)	Except higher limit as specified elsewhere in other section, the emissions from the low-power radio-frequency devices shall not exceed the field strength levels specified in the following table and the level of any unwanted emissions shall not exceed the level of the fundamental emission. The tighter limit applies at the band edges	<input checked="" type="checkbox"/>										
		<table border="1"> <thead> <tr> <th>Frequency range (MHz)</th> <th>Field Strength ($\mu\text{V/m}$)</th> </tr> </thead> <tbody> <tr> <td>30 – 88</td> <td>100</td> </tr> <tr> <td>88 – 216</td> <td>150</td> </tr> <tr> <td>216 960</td> <td>200</td> </tr> <tr> <td>Above 960</td> <td>500</td> </tr> </tbody> </table>		Frequency range (MHz)	Field Strength ($\mu\text{V/m}$)	30 – 88	100	88 – 216	150	216 960	200	Above 960	500
		Frequency range (MHz)		Field Strength ($\mu\text{V/m}$)									
		30 – 88		100									
		88 – 216		150									
216 960	200												
Above 960	500												



Procedure	<ol style="list-style-type: none"> 1. The EUT was switched on and allowed to warm up to its normal operating condition. 2. The test was carried out at the selected frequency points obtained from the EUT characterization. Maximization of the emissions, was carried out by rotating the EUT, changing the antenna polarization, and adjusting the antenna height in the following manner: <ol style="list-style-type: none"> a. Vertical or horizontal polarization (whichever gave the higher emission level
-----------	---

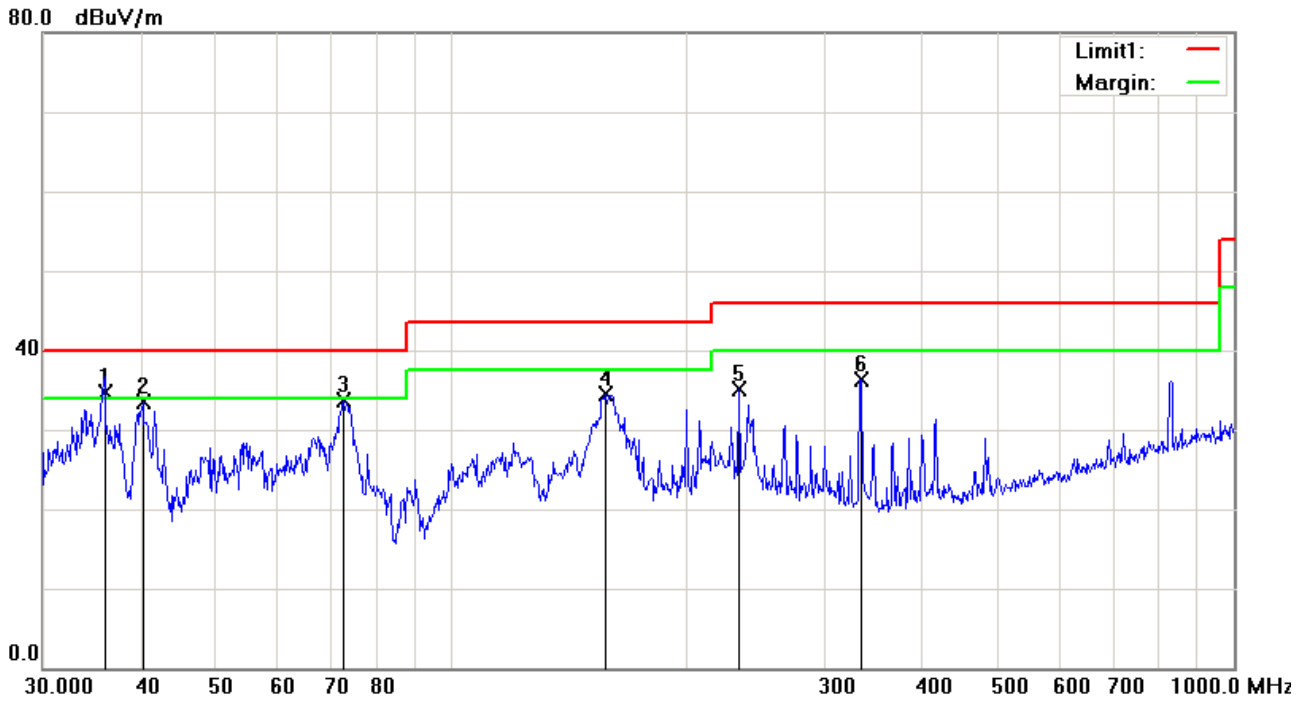
	<p>over a full rotation of the EUT) was chosen.</p> <p>b. The EUT was then rotated to the direction that gave the maximum emission.</p> <p>c. Finally, the antenna height was adjusted to the height that gave the maximum emission.</p> <p>3. The resolution bandwidth and video bandwidth of test receiver/spectrum analyzer is 120 kHz for Quasiy Peak detection at frequency below 1GHz.</p> <p>4. The resolution bandwidth of test receiver/spectrum analyzer is 1MHz and video bandwidth is 3MHz with Peak detection for Peak measurement at frequency above 1GHz. The resolution bandwidth of test receiver/spectrum analyzer is 1MHz and the video bandwidth with Peak detection for Average Measurement as below at frequency above 1GHz. ■ 1 kHz (Duty cycle < 98%) □ 10 Hz (Duty cycle > 98%)</p> <p>5. Steps 2 and 3 were repeated for the next frequency point, until all selected frequency points were measured.</p>
Remark	
Result	<input checked="" type="checkbox"/> Pass <input type="checkbox"/> Fail

Test Data Yes N/A

Test Plot Yes (See below) N/A

Test Mode 1: USB Mode

Below 1GHz



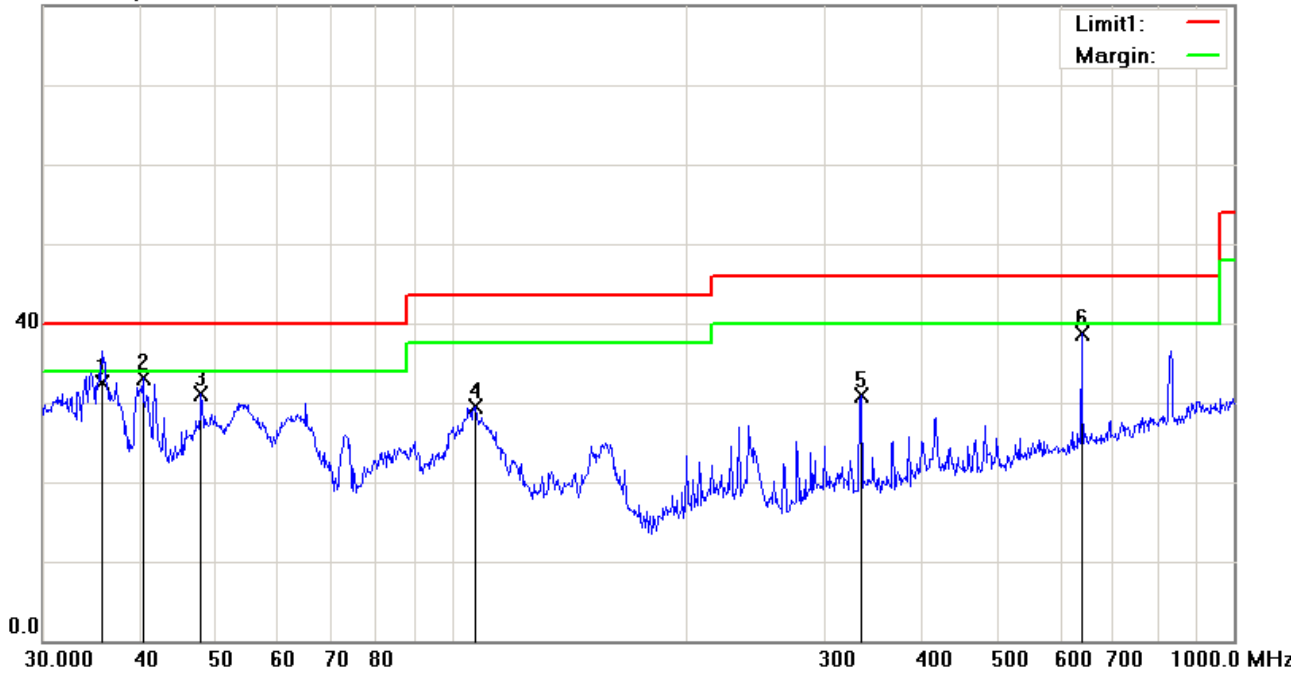
Test Data

Horizontal Polarity Plot @3m

No.	P/L	Frequency	Reading	Detector	Corrected	Result	Limit	Margin	Height	Degree
		(MHz)	(dBuV/m)		(dB/m)	(dBuV/m)	(dBuV/m)	(dB)	(cm)	()
1	H	36.0007	39.45	QP	-4.67	34.78	40.00	-5.22	100	297
2	H	40.2757	41.27	peak	-7.77	33.50	40.00	-6.50	100	331
3	H	72.8466	47.45	peak	-13.68	33.77	40.00	-6.23	100	133
4	H	157.5589	42.83	peak	-8.31	34.52	43.50	-8.98	100	137
5	H	232.5318	44.22	peak	-9.04	35.18	46.00	-10.82	100	99
6	H	333.6867	42.23	peak	-5.93	36.30	46.00	-9.70	100	125

Below 1GHz

80.0 dBuV/m



Test Data

Vertical Polarity Plot @3m

No.	P/L	Frequency (MHz)	Reading (dBuV/m)	Detector	Corrected (dB/m)	Result (dBuV/m)	Limit (dBuV/m)	Margin (dB)	Height (cm)	Degree ()
1	V	35.7491	37.00	QP	-4.49	32.51	40.00	-7.49	100	349
2	V	40.2757	40.90	peak	-7.77	33.13	40.00	-6.87	100	218
3	V	47.8260	43.27	peak	-12.20	31.07	40.00	-8.93	100	278
4	V	107.1337	39.05	peak	-9.52	29.53	43.50	-13.97	100	221
5	V	333.6867	36.93	peak	-5.93	31.00	46.00	-15.00	100	45
6	V	638.3686	38.01	peak	0.62	38.63	46.00	-7.37	100	207

Above 1GHz

Frequency (MHz)	Amplitude (dB μ V/m)	Azimuth	Height (cm)	Polarity (H/V)	Factors (dB)	Limit (dB μ V/m)	Margin (dB)	Detector (PK/AV)
1553.42	51.25	56	182	V	-23.02	74	-22.75	PK
2055.36	57.33	123	206	V	-22.03	74	-16.67	PK
1657.52	53.24	96	234	V	-24.01	74	-20.76	PK
2145.56	51.25	78	126	H	-21.25	74	-22.75	PK
2839.601	52.33	68	189	H	-21.73	74	-21.67	PK
1825.33	53.65	66	177	H	-20.56	74	-20.35	PK

Note1: The highest frequency of the EUT is 2480 MHz, so the testing has been conformed to $5 \times 2480 \text{MHz} = 12,400 \text{MHz}$.

Note2: The frequency that above 3GHz is mainly from the environment noise.

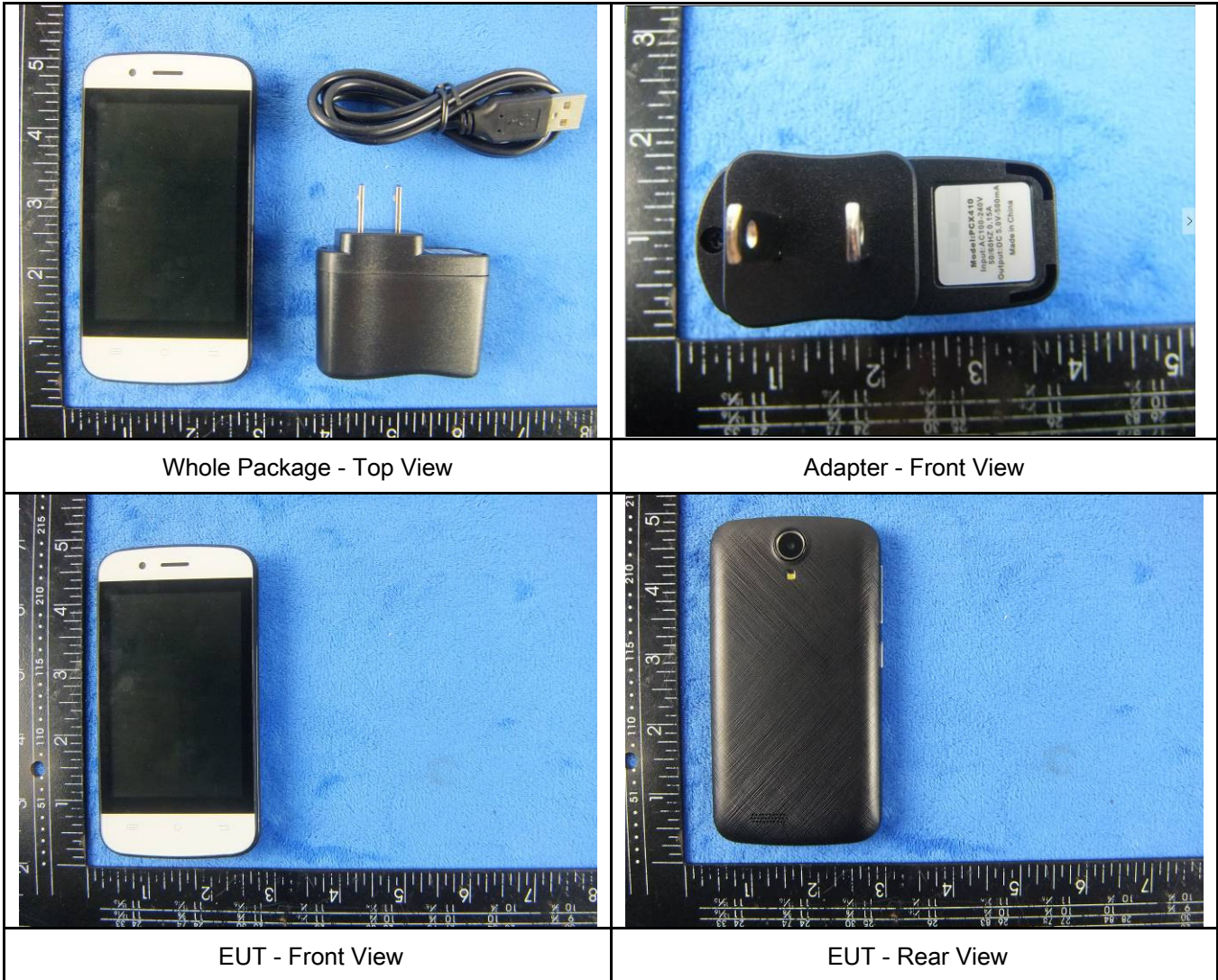
Note3: The AV measurement performed, more than 20dB below limit so AV test data was not presented.

Annex A. TEST INSTRUMENT

Instrument	Model	Serial #	Cal Date	Cal Due	In use
AC Line Conducted Emissions					
EMI test receiver	ESCS30	8471241027	09/17/2015	09/16/2016	<input checked="" type="checkbox"/>
Line Impedance Stabilization Network	LI-125A	191106	09/25/2015	09/24/2016	<input checked="" type="checkbox"/>
Line Impedance Stabilization Network	LI-125A	191107	09/25/2015	09/24/2016	<input checked="" type="checkbox"/>
LISN	ISN T800	34373	09/25/2015	09/24/2016	<input checked="" type="checkbox"/>
Transient Limiter	LIT-153	531118	09/01/2015	08/31/2016	<input checked="" type="checkbox"/>
Radiated Emissions					
EMI test receiver	ESL6	100262	09/17/2015	09/16/2016	<input checked="" type="checkbox"/>
OPT 010 AMPLIFIER (0.1-1300MHz)	8447E	2727A02430	09/01/2015	08/31/2016	<input checked="" type="checkbox"/>
Microwave Preamplifier (1 ~ 26.5GHz)	8449B	3008A02402	03/25/2015	03/24/2016	<input checked="" type="checkbox"/>
Bilog Antenna (30MHz~6GHz)	JB6	A110712	09/21/2015	09/20/2016	<input checked="" type="checkbox"/>
Double Ridge Horn Antenna	AH-118	71259	09/24/2015	09/23/2016	<input checked="" type="checkbox"/>

Annex B. EUT And Test Setup Photographs

Annex B.i. Photograph: EUT External Photo

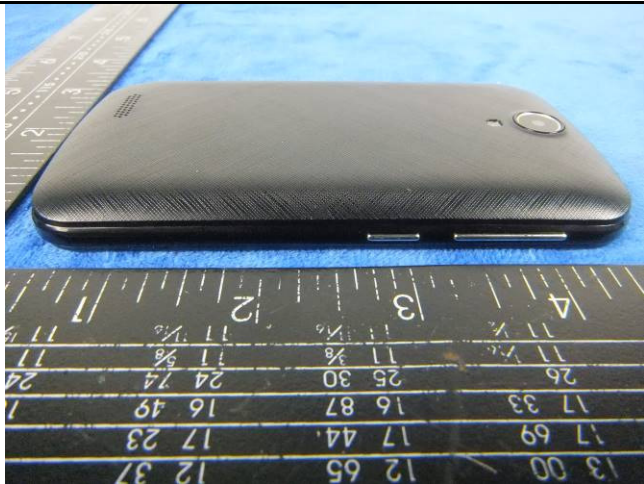




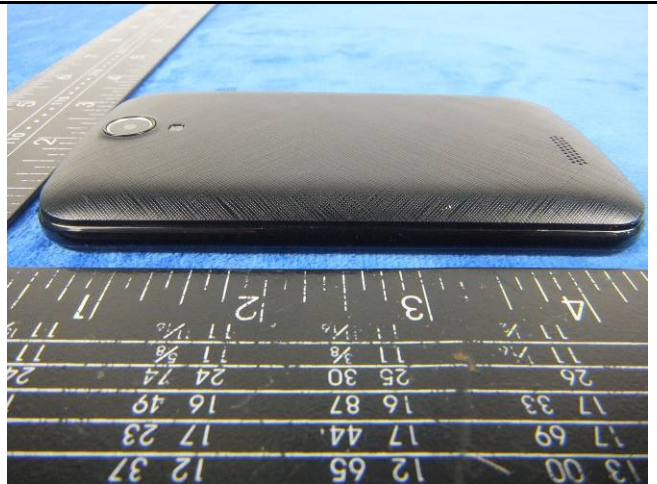
EUT - Top View



EUT - Bottom View



EUT - Left View



EUT - Right View

Annex B.ii. Photograph: EUT Internal Photo



Cover Off - Top View 1



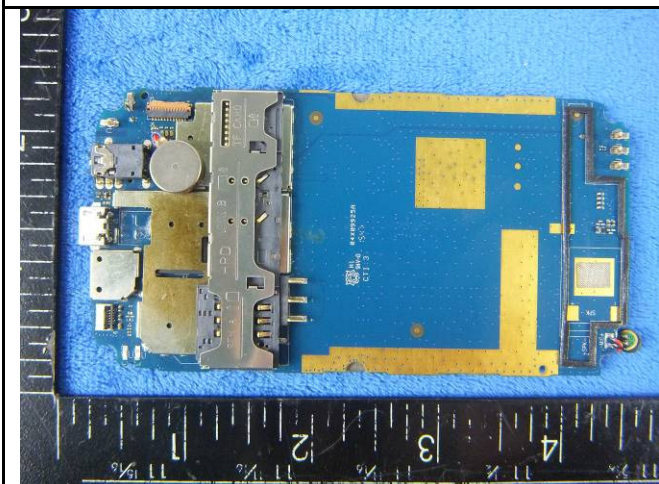
Cover Off - Top View 2



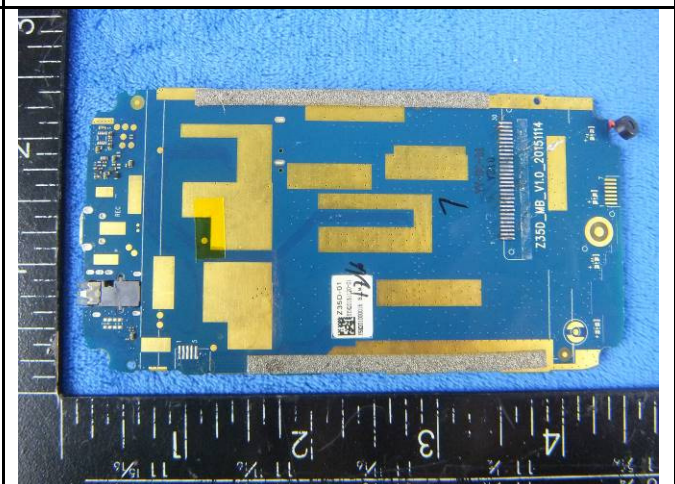
Battery - Front View



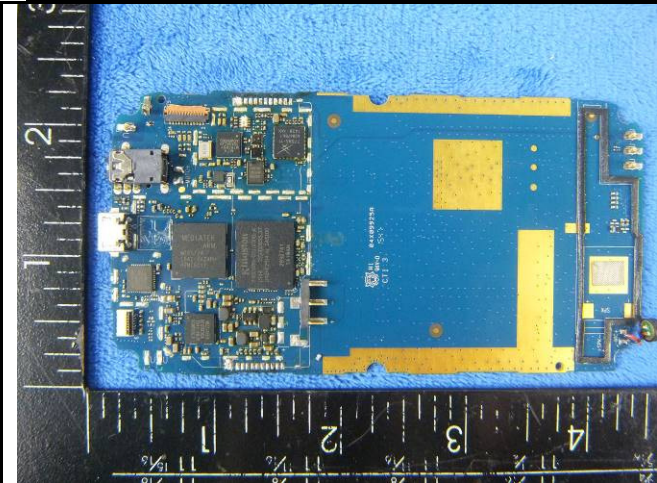
Battery - Rear View



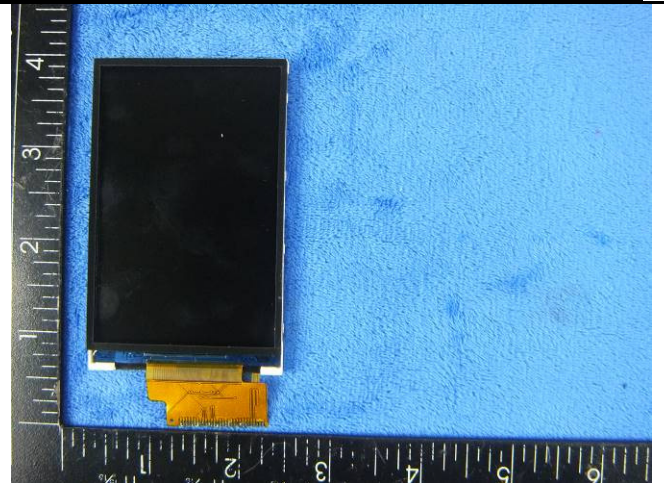
Mainboard with Shielding - Front View



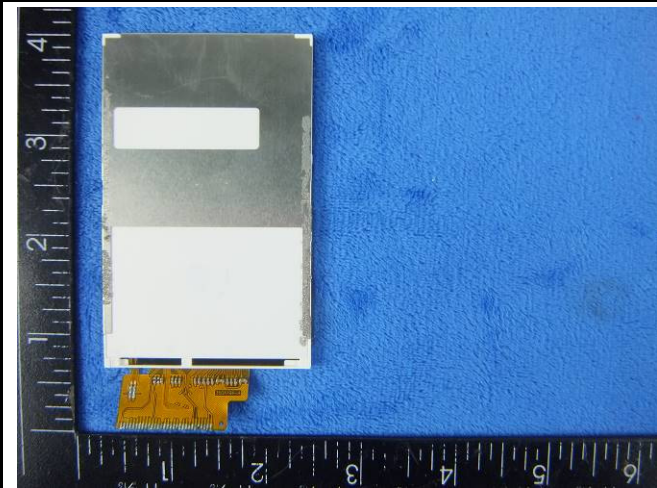
Mainboard with Shielding - Rear View



Mainboard without shielding - Front View



LCD - Front View



LCD - Rear View



GSM/PCS/UMTS-FDD - Antenna View

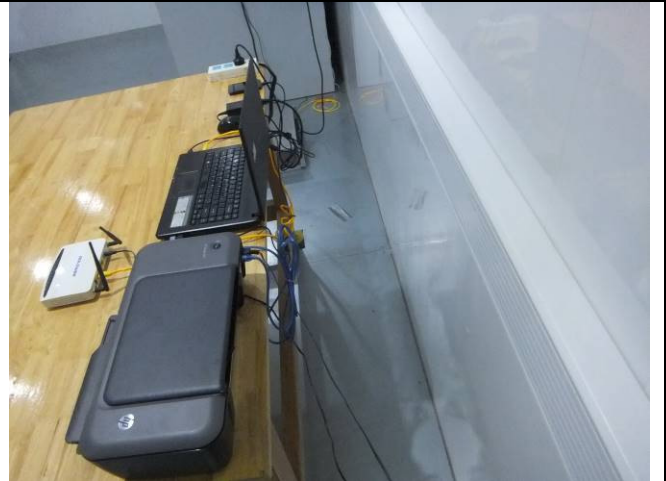


WIFI/BT/BLE/GPS - Antenna View

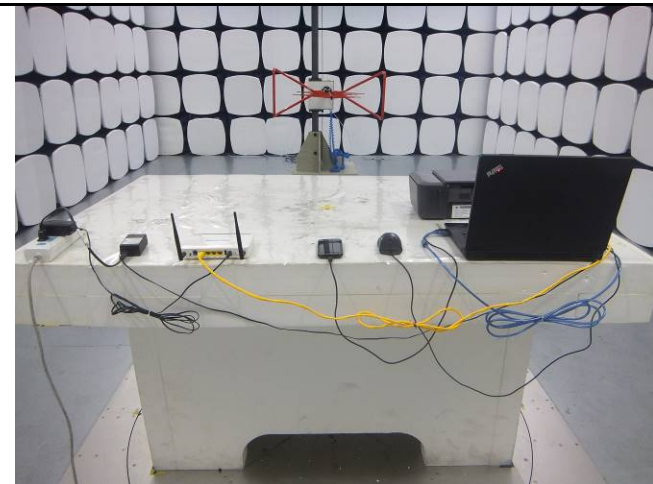
Annex B.iii. Photograph: Test Setup Photo



Conducted Emissions Test Setup – Front View



Conducted Emissions Test Setup – Side View



Radiated Spurious Emissions Test Setup Below 1GHz

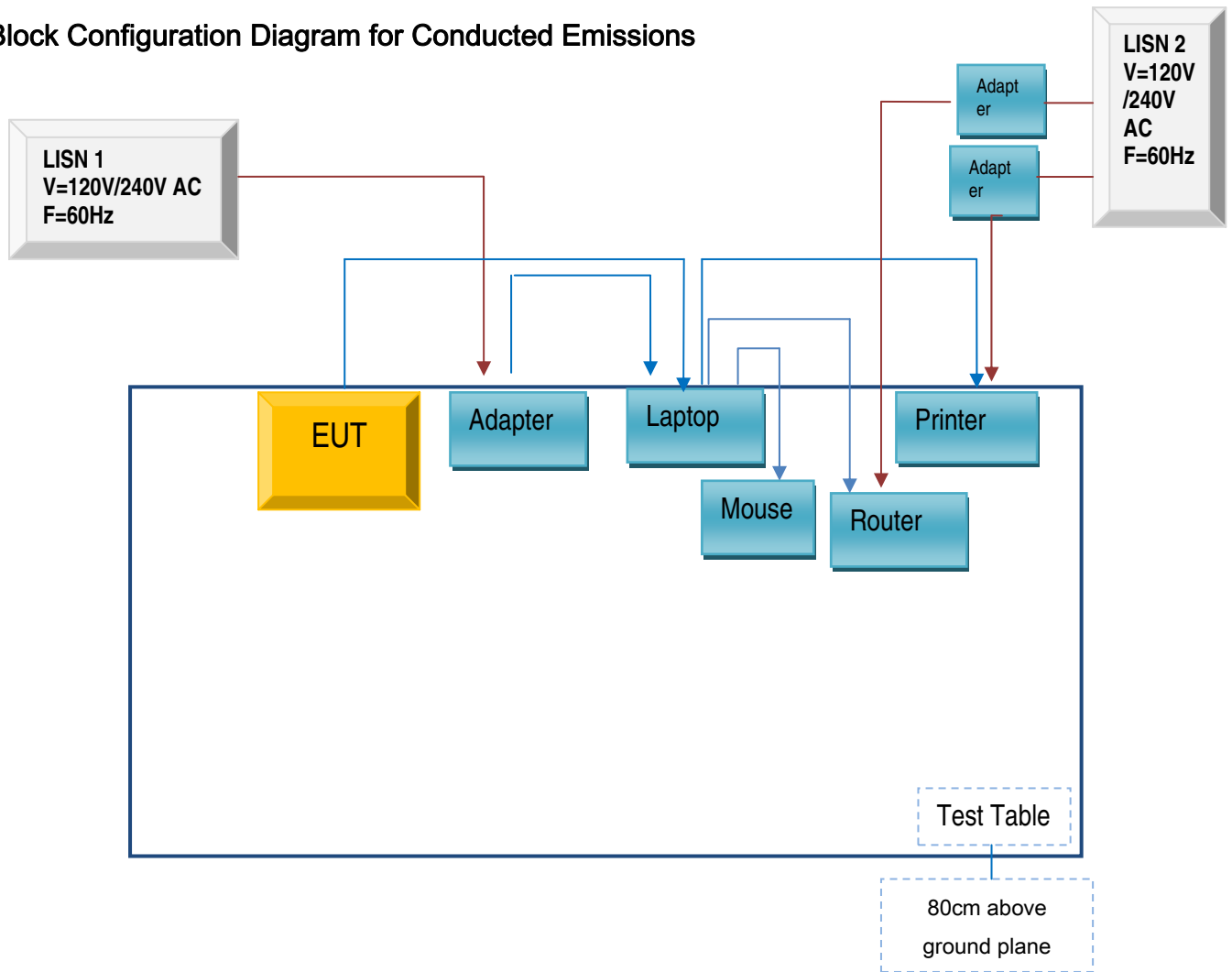


Radiated Spurious Emissions Test Setup Above 1GHz

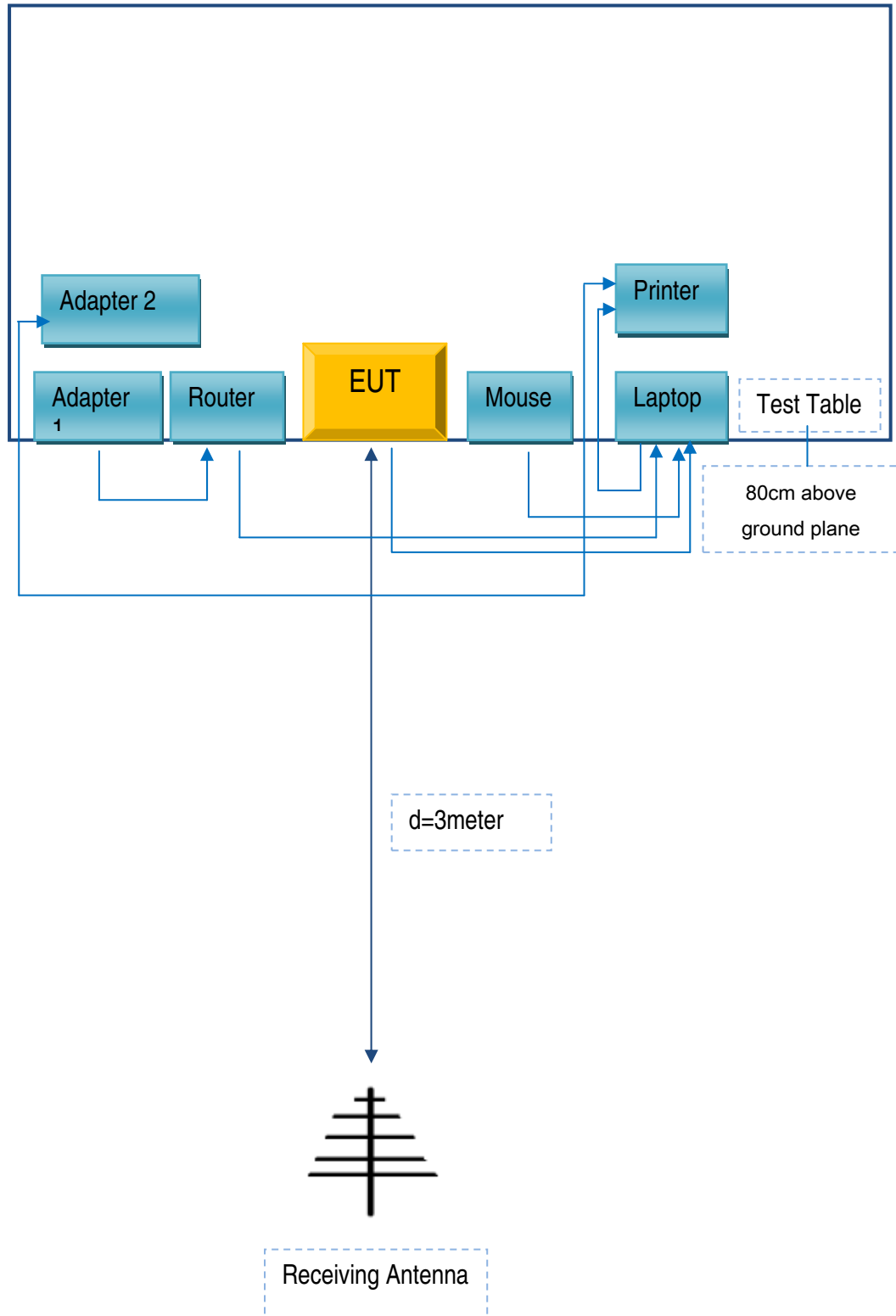
Annex C. TEST SETUP AND SUPPORTING EQUIPMENT

Annex C.ii. TEST SET UP BLOCK

Block Configuration Diagram for Conducted Emissions



Block Configuration Diagram for Radiated Emissions



Annex C. ii. SUPPORTING EQUIPMENT DESCRIPTION

The following is a description of supporting equipment and details of cables used with the EUT.

Supporting Equipment:

Manufacturer	Equipment Description	Model	Serial No
Lenovo	Lenovo Laptop	E40& 0579A52	LR-1EHRX
GOLDWEB	Router	R102	1202032094
HP	Printer	VCVRA-1003	CN36M19JWX
DELL	Mouse	E100	912NMTUT41481
SMT TELECOMM HK LIMITED	Adapter	PC X410	CN15010451

Supporting Cable:

Cable type	Shield Type	Ferrite Core	Length	Serial No
USB Cable	Un-shielding	No	2m	JX120051274
RJ45 Cable	Un-shielding	No	2m	KX156327541
Router Power cable	Un-shielding	No	2m	13274630Z
Printer Power cable	Un-shielding	No	2m	127581031
USB Cable	Un-shielding	No	0.8m	JX1502542

Test Report	16070657-FCC-E
Page	29 of 30

Annex D. User Manual / Block Diagram / Schematics / Partlist

Please see Attachment

Test Report	16070657-FCC-E
Page	30 of 30

Annex E. DECLARATION OF SIMILARITY

N/A