



**ACT**pro

**ACT**

## USB Desktop Reader



---

---

## Operating and Installation Instructions

---

---

**ACT Product Code: ACT USB Reader**





**FCC ID: 2AILRUSBRD**  
**Model No. USB-RD**

This device complies with part 15 of the FCC Rules. Operation is subject to the following two conditions: (1) this device may not cause harmful interference, and (2) this device must accept any interference received, including interference that may cause undesired operation.

## Operating & Installation Instructions

### 1 System overview

The ACTpro USB reader is a plug and play desktop reader, with support for ACT RFID, HID, MIFARE Classic and DESFire EV1 technologies and is compatible with ACTenterprise versions 1.3.0.5 or later.

### 2 Installation

1. Install ACTEnterprise V1.3.0.5 or later.
2. Plug in USB reader into an available USB port.
3. Wait for the installation of the driver to complete.
4. Run ACTManage.
5. Present card to reader.
6. If the card is already assigned to a user, the user details page is displayed.
7. If the card is not assigned to a user, a new user details page is displayed with the card number entered.

### 3 Specifications

Features	Description
13.56MHz technology	MIFARE Classic, MIFARE Plus, MIFARE DESFire EV1
125kHz technology	ACTRFID and HID
Dimensions	116 x 67 x 14mm / 4½" x 2¾" x ½"
Power Supply	5V DC- supplied from USB port
Current consumption	<100mA
Audio Indication	Buzzer when card presented
Visual Indication	Red LED on: Normal Green LED flashes when valid card presented Amber LED flashing: not connected to PC Green LED Flashing: capture mode
USB Cable	1.5m / 4½ ft USB cable

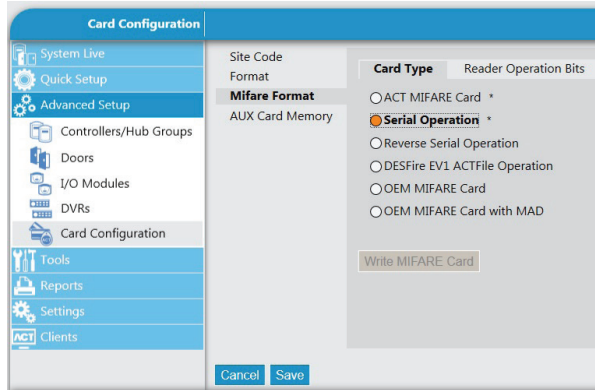
Learned Cards and Site Coded cards are not supported by the USB reader.





#### 4 Non ACT MIFARE Cards:

The reader may be programmed to read non ACT MIFARE cards. From ACTInstall, Go to ACTInstall -> Advanced Setup -> Card Configuration -> Mifare Format



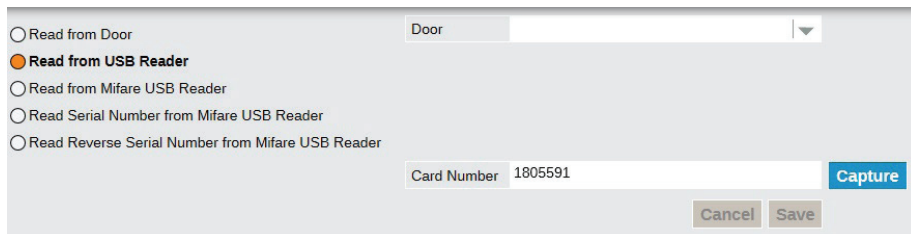
Select the appropriate MIFARE card type then press Save:

- ACT MIFARE Card:** This is the **default** setting to read ACT MIFARE Cards
- Serial Operation:** Returns the MIFARE serial number
- Reverse Serial Operation:** Returns the MIFARE serial number in reverse
- DESFire EV1 ACT File Operation:** Set when using ACT DESFire EV1 cards
- OEM MIFARE card:** Non-ACT MIFARE cards
- OEM MIFARE card with MAD:** Non-ACT MIFARE cards

#### 5 Capture Cards:

For cards with both 125 kHz and MIFARE technology, cards should be enrolled using the capture card facility in ACTManage -> Users

Click on the Capture card icon  beside the card number.



To read the 125kHz number on the card, select “**Read from USB Reader**” and click capture.

To read the ACT MIFARE number on the card, select “**Read from MIFARE USB**” Reader and click capture.





# ACT

Access Control Technology Ltd. reserve the right to change the contents of this manual and the system it applies to without prior notice.

While every effort has been taken by ACT to ensure the accuracy of the information contained within this document, ACT assumes no responsibility for any errors or omissions. No liability is assumed for damages resulting from the use of information contained within this document.



CE



#### **Ireland Office**

Unit C1, South City Business Centre,  
Tallaght, Dublin, D24 PN28, Ireland

#### **United Kingdom Office**

601 Birchwood One, Dewhurst Road,  
Birchwood, Warrington, WA3 7GB, UK

Ireland: +353 (0)1 466 2570

UK: +44 (0)161 236 9488

Email: [info@act.eu](mailto:info@act.eu)

[www.act.eu](http://www.act.eu)

[www.act-access.com](http://www.act-access.com) (USA)

Copyright © 2016 Access Control Technology Ltd. Part No.18-00095 Iss 4

