

## PROFESSIONAL BLUETOOTH SPEAKER



INSTRUCTIONS FOR USE AND CARE



The lightning flash arrowhead symbol in an equilateral triangle, which is to alert the user to the presence of un-insulation.

There is a risk of electric shock to people by products.

The exclamation point in an equilateral triangle, which is to alert the user to presence of important operation and maintenance instructions accompany with the appliance.

## Safety Precautions

Warning: To prevent fire or electric shock, do not expose this appliance to rain or moisture.

## IMPORTANT SAFEGUARDS

---

---

Caution: please carefully all the following important safeguards to ensure safe operation.

### 1. Read Instructions:

All the safety and operating instructions should be read before the appliance is operated.

### 2. Retain Instructions:

The safety and operating instructions should be retained for future reference.

### 3. Follow Instructions:

All operating instructions should be followed.

### 4. Heed Warnings:

All warnings on the appliance and the operating instructions should be adhered to.

### 5. Power Source:

The appliance should be connected based on instructions.

### 6. Heat: Keep the appliance away from heat sources such as radiators, refrigerator, stoves, or other appliances that may radiate heat.

### 7. Non-use Periods:

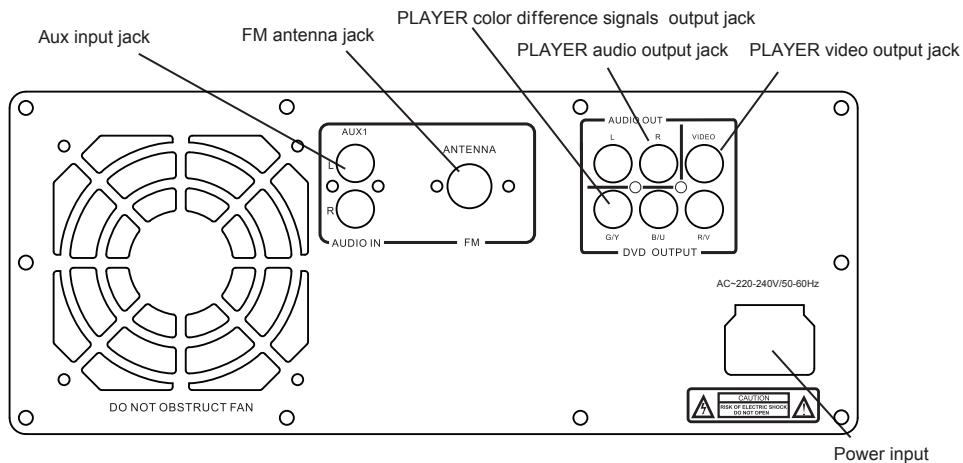
The power cord of appliance should be unplugged from the outlet when you do not use it for a long time.

### 8. Damage requiring service:

The appliance should be repaired by qualified service person in following cases,

- The power plug or cable has been damaged;
- Objects have fallen or liquid has been spilled on the appliance;
- The appliance has been exposed to rain;
- The appliance is functioning abnormally.

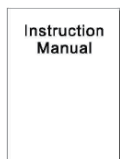
# Connections



## Accessories



REMOTE CONTROL



INSTRUCTION MANUAL



FM ANTENNA



AUDIO CABLE

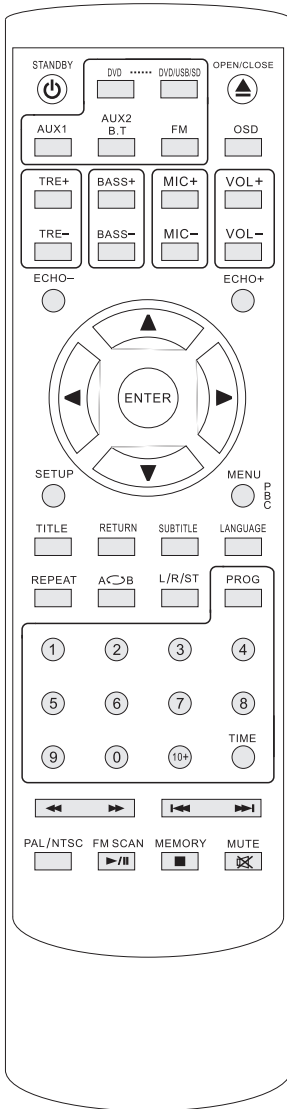


POWER CORD



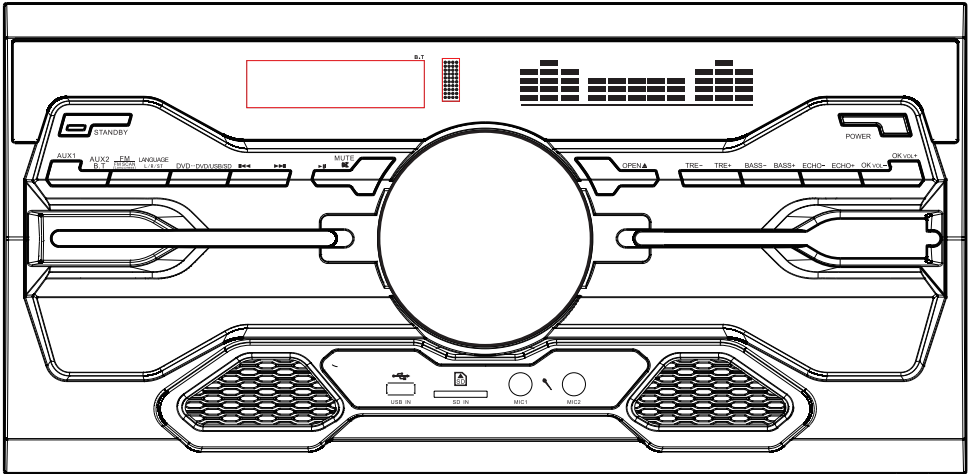
VIDEO CABLE

# Remote Instruction



- STANDBY: Standby key
- OPEN/CLOSE: open or close key
- AUX1: Aux1 input key
- AUX2:/B.T: Aux2 input/Bluetooth input key
- DVD: input key
- 1.2.3.4.5.6.7.8.9.0.10.10+: numerical key
- REPEAT: repeat key
- PBC: pbc key
- A-B: a-b repeat key
- ◀◀: rewind key
- ▶▶: fast forward key
- ◀◀|: previous key
- ▶▶|: next key
- PROG: prog key
- ▶/||: play/pause key
- : stop key
- ▲: up key
- ▼: down key
- ◀: left key
- ▶: right key
- ENTER: enter key
- TITLE: title key
- SETUP: setup key
- RETURN: return key
- MENU: return key
- MIC-: Mic weaker key
- MIC+: Mic increase key
- VOL-: Volume weaker key
- VOL+: Volume increase key
- ECHO-: Echo weaker key
- ECHO+: Echo increase key
- TRE-: Treble weaker key
- TRE+: Treble increase key
- BASS-: Bass weaker key
- BASS+: Bass increase key
- LANGUAGE: language key
- L/R: Left/right channel select key
- SUBTITLE: subtitle key
- OSD: on screen display key
- N/P: NTSC / PAL TV system select
- FM: FM radio input
- FM SCAN: FM programs auto scan

## Front panel-controls and functions



STANDBY: Standby key

POWER: Power ON/OFF

AUX1: Aux1 input key

AUX2/B.T.: Aux2 input/ Bluetooth input key

FM /FM SCAN(long press): FM input key, long press for FM auto scan

LANGUAGE L/R/ST: Language/ Left/ Right Channel select key

DVD-DVD/USB/SD: DVD/USB/SD input key

◀◀: Previous key

▶▶: Next key

▶|| : Play/ Pause key

MUTE: Mute and cancel mute

OPEN: DVD open and close door

TRE-: Treble weaker key

TRE+: Treble increase key

BASS-:Bass weaker key

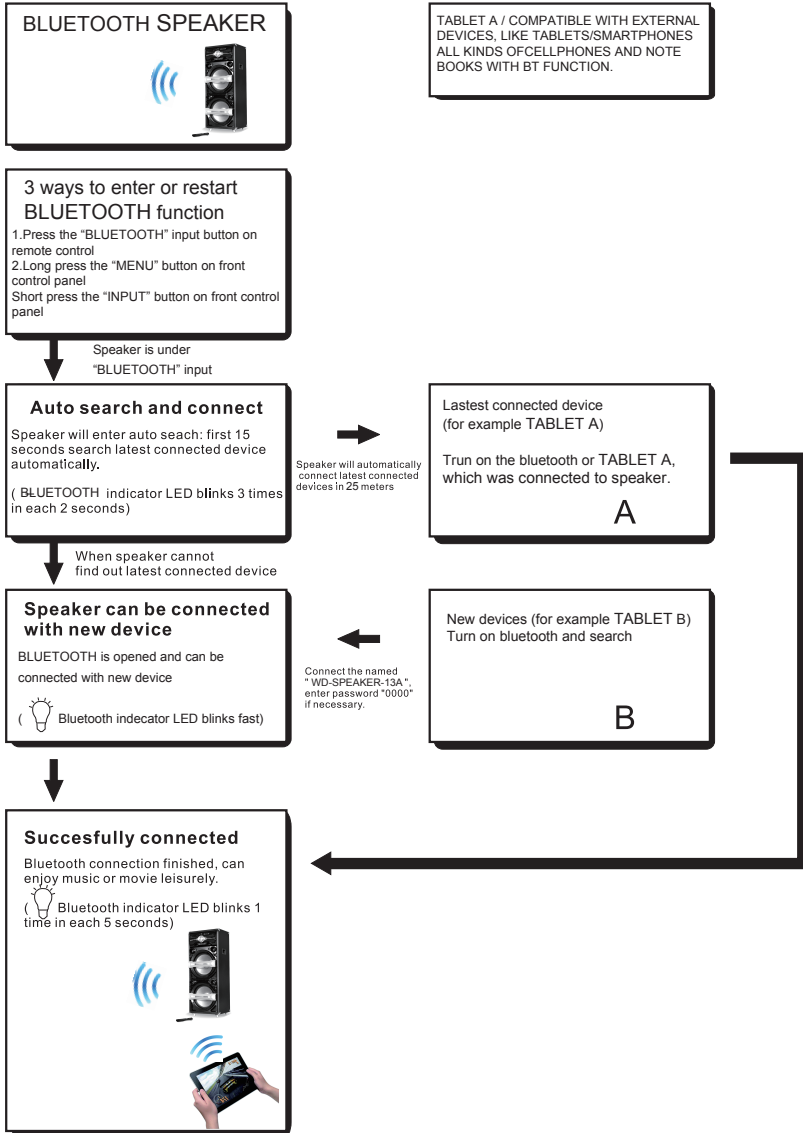
BASS+:Bass increase key

ECHO-:Echo weaker key

ECHO+: Echo increase key

OK vol-:Volume for Karaoke weaker key

OK vol+: Volume for Karaoke increase key



**FCC Caution:**

This device complies with part 15 of the FCC Rules. Operation is subject to the following two conditions: (1) This device may not cause harmful interference, and (2) this device must accept any interference received, including interference that may cause undesired operation.

Any Changes or modifications not expressly approved by the party responsible for compliance could void the user's authority to operate the equipment.

**Note:** This equipment has been tested and found to comply with the limits for a Class B digital device, pursuant to part 15 of the FCC Rules. These limits are designed to provide reasonable protection against harmful interference in a residential installation. This equipment generates uses and can radiate radio frequency energy and, if not installed and used in accordance with the instructions, may cause harmful interference to radio communications. However, there is no guarantee that interference will not occur in a particular installation. If this equipment does cause harmful interference to radio or television reception, which can be determined by turning the equipment off and on, the user is encouraged to try to correct the interference by one or more of the following measures:

- Reorient or relocate the receiving antenna.
- Increase the separation between the equipment and receiver.
- Connect the equipment into an outlet on a circuit different from that to which the receiver is connected.
- Consult the dealer or an experienced radio/TV technician for help.