



The lightning flash with the arrowhead symbol within an equilateral triangle is intended to alert the user to the presence of "uninsulated dangerous voltage" within the product's enclosure that may be of sufficient magnitude to constitute a risk of electric shock to a person.

The exclamation point within an equilateral triangle is intended to alert the user to the presence of important operating and maintenance (servicing) instructions in the literature accompanying the unit.

Safety Precautions

Warning: To prevent fire or electric shock, do not expose this appliance to rain or moisture.

IMPORTANT SAFEGUARDS

Caution: Please carefully read all of the following important safeguards to ensure safe operation.

1. Read Instructions:

All the safety and operating instructions should be read before the appliance is operated.

2. Retain Instructions:

The safety and operating instructions should be retained for future reference.

3. Follow Instructions:

All operating instructions should be followed.

4. Heed Warnings:

All warnings on the unit and the operating instructions should be adhered to.

5. Power Source:

The appliance should be connected based on instructions.

6. Heat:

Keep the unit away from heat sources such as radiators, refrigerators, stoves or other appliances that may radiate heat.

7. Non-use Periods:

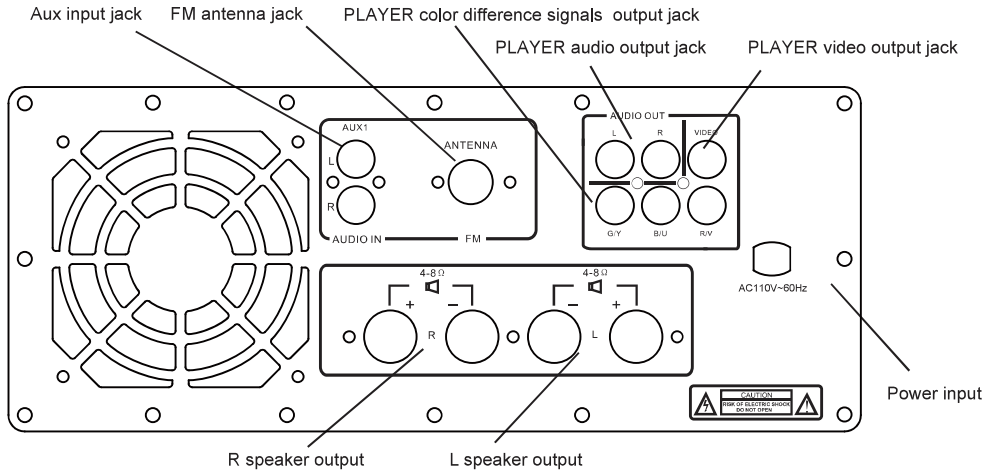
The power cord of the unit should be unplugged from the outlet when you do not use it for a long time.

8. Damage requiring service:

The unit should be repaired by qualified service personnel in the following cases:

- a. The power plug or cable has been damaged;
- b. Objects have fallen or liquid has been spilled on the appliance;
- c. The appliance has been exposed to rain;
- d. The appliance is functioning abnormally.

CONNECTIONS



Accessories



SPEAKER CABLE x2



VIDEO CABLE



REMOTE CONTROL



INSTRUCTION MANUAL



FM ANTENNA



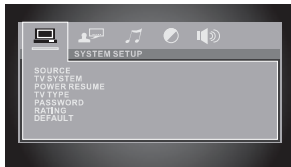
AUDIO CABLE



ONE MICROPHONE

DVD MENU

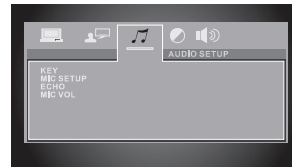
WELCOME
EDISON 4000



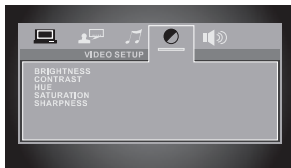
SYSTEM SETUP



LANGUAGE SETUP



AUDIO SETUP

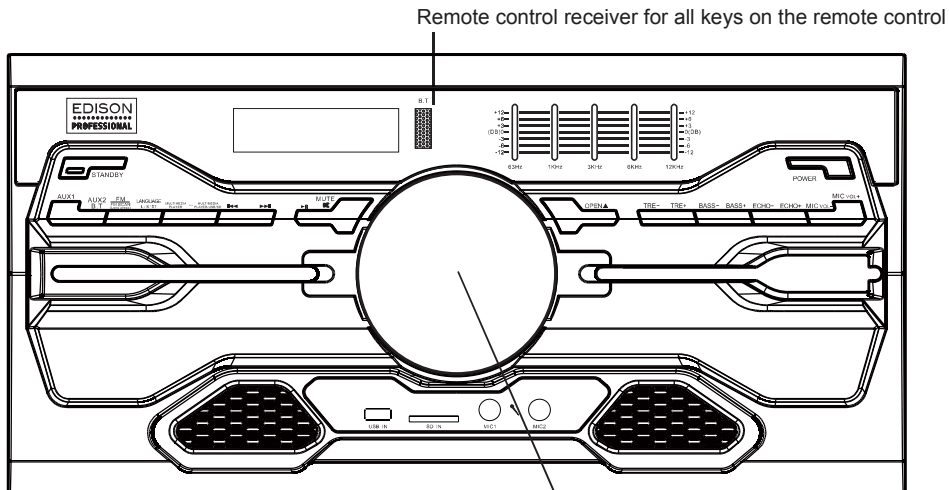


VIDEO SETUP



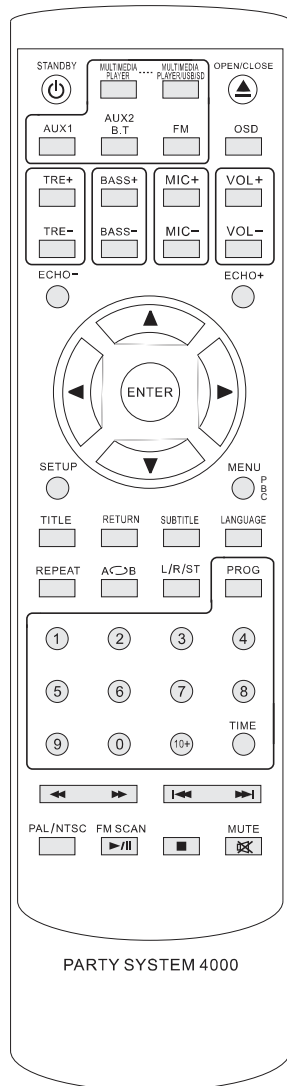
SPEAKER SETUP

FRONT PANEL-CONTROLS AND FUNCTIONS



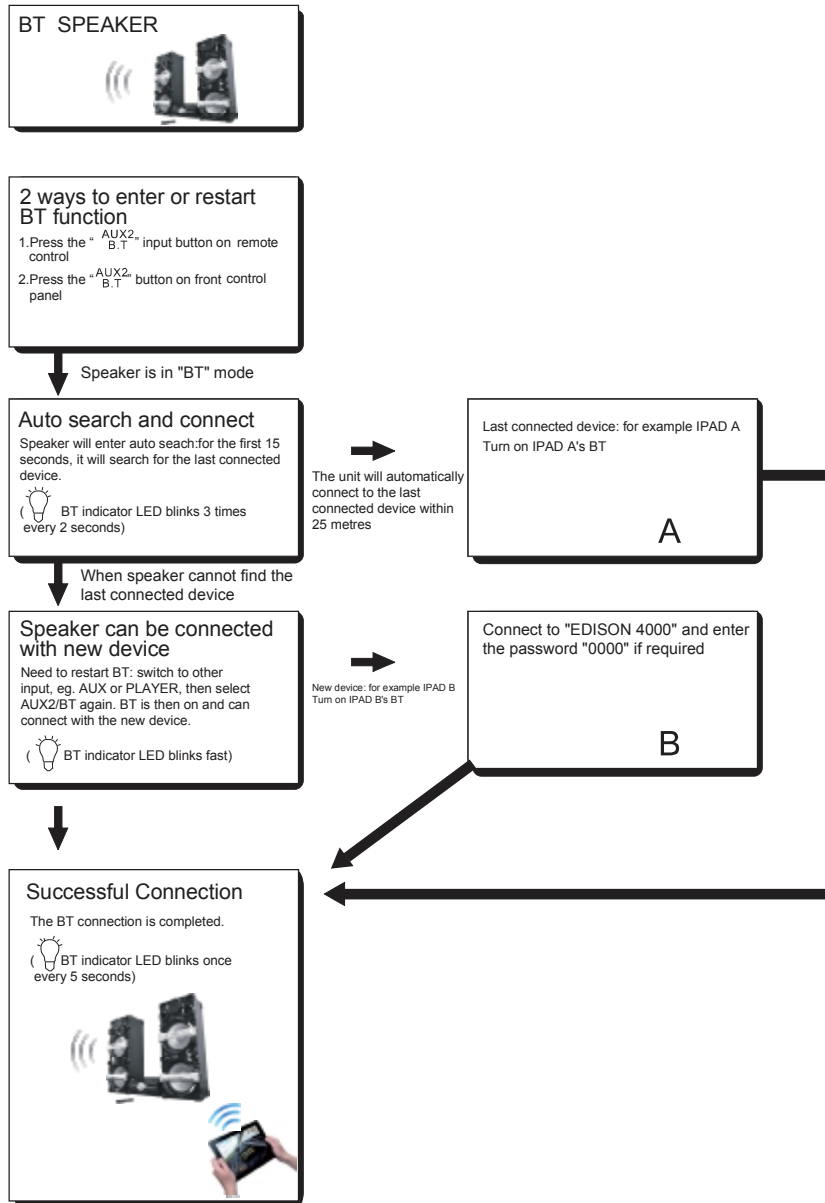
- STANDBY: Standby key
- POWER: Power ON/OFF
- AUX1: Aux1 input key
- AUX2/B.T.: Aux2 input/ BT input key
- FM /FM SCAN(long press): FM input key, long press for FM auto scan
- LANGUAGE L/R/ST: Language/ Left/ Right Channel select key
- MULTIMEDIA PLAYER-MULTIMEDIA PLAYER USB/SD: Multimedia player/USB/SD input key
- ◀◀: Previous key
- ▶▶: Next key
- ▶|| : Play/ Pause key
- MUTE: Mute and cancel mute
- OPEN: Player open and close door
- TRE-: Treble weaker key
- TRE+: Treble increase key
- BASS-:Bass weaker key
- BASS+:Bass increase key
- ECHO-:Echo weaker key
- ECHO+: Echo increase key
- MIC vol-:Volume for Karaoke weaker key
- MIC vol+: Volume for Karaoke increase key

REMOTE INSTRUCTION



- STANDBY: Standby key
- OPEN/CLOSE: Player open or close key
- AUX1: Aux1 input key
- AUX2:/B.T: Aux2 input/BT input key
- MULTIMEDIA PLAYER: Multimedia player input key
- 1.2.3.4.5.6.7.8.9.0.10+: Multimedia Player numerical key
- REPRAT: Multimedia player repeat key
- PBC: Multimedia player pbc key
- A-B: Multimedia player a-b repeat key
- ◀◀: Multimedia player rewind key
- ▶▶: Multimedia player fast forward key
- ◀◀◀: Multimedia player previous key
- ▶▶▶: Multimedia player nexy key
- PROG: Multimedia player prog key
- ▶||: Multimedia player play/pause key
- : Multimedia player stop key
- ▲: Multimedia player up key
- ▼: Multimedia player down key
- ◀: Multimedia player left key
- ▶: Multimedia player right key
- ENTER: Multimedia player enter key
- TITLE: Multimedia player title key
- SETUP: Multimedia player setup key
- RETURN: Multimedia player return key
- MENU: Multimedia player return key
- MIC-: Mic weaker key
- MIC+: Mic increase key
- VOL-: Volume weaker key
- VOL+: Volume increase key
- ECHO-: Echo weaker key
- ECHO+: Echo increase key
- TRE-: Treble weaker key
- TRE+: Treble increase key
- BASS-: Bass weaker key
- BASS+: Bass increase key
- LANGUAGR: Multimedia player language key
- R/L: Multimedia player right/left channel select key
- SUBTITLE: Multimedia player subtitle key
- OSD: Multimedia player on screen display key
- N/P: Multimedia player ntsc/pal TV system select
- FM:FM radio input
- FM SCAN:FM programs auto scan

HOW TO USE BLUETOOTH CONNECTION





FCC Caution:

This device complies with part 15 of the FCC Rules. Operation is subject to the following two conditions: (1) This device may not cause harmful interference, and (2) this device must accept any interference received, including interference that may cause undesired operation.

Any Changes or modifications not expressly approved by the party responsible for compliance could void the user's authority to operate the equipment.

Note: This equipment has been tested and found to comply with the limits for a Class B digital device, pursuant to part 15 of the FCC Rules. These limits are designed to provide reasonable protection against harmful interference in a residential installation. This equipment generates uses and can radiate radio frequency energy and, if not installed and used in accordance with the instructions, may cause harmful interference to radio communications. However, there is no guarantee that interference will not occur in a particular installation. If this equipment does cause harmful interference to radio or television reception, which can be determined by turning the equipment off and on, the user is encouraged to try to correct the interference by one or more of the following measures:

- Reorient or relocate the receiving antenna.
- Increase the separation between the equipment and receiver.
- Connect the equipment into an outlet on a circuit different from that to which the receiver is connected.
- Consult the dealer or an experienced radio/TV technician for help.