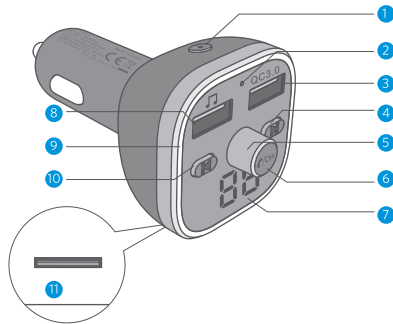



Bluetooth FM Transmitter

USER MANUAL

STRUCTURE (DIAGRAM)

EN



- 1 RGB Light Button: Short press  button to change different RGB lighting colors. Press once to change one color each time, and the light will be turned off when you press it at the seventh time.
- 2 Microphone
- 3 QC3.0 Quick Charge Port (DC 5V/3A, 9V/2A, 12V/1.5A)
- 4 Short Press to Next Track/Short Press to Increase Frequency in FM Mode/Long Press to Switch Modes among Bluetooth, TF Card and U Disk
- 5 Knob Button: Rotate clockwise to increase the frequency (FM mode) or volume, and rotate anticlockwise to decrease the frequency (FM mode) or volume
- 6 Multifunctional Button: Short press to Pause/Play. Hands-free Phone Calls (Answer/Hang Up/Reject). CH Button: Long press to enter into frequency modulating mode.

- 7 LED Display Screen
- 8 U Disk Port (Max. 32G)/5V-1A Charging Port
- 9 Ring RGB Light
- 10 Short Press to Previous Track/Short Press to Decrease Frequency in FM Mode
- 11 TF Slot (Max. 32G)

SPECIFICATIONS


Working Distance	5m
FM Tuning Range	88.1MHz-107.9MHz
Compatible Audio Format	MP3, WMA, WAV, FLAC
Compatible Bluetooth Protocol	A2DP/AVRCP/HSP/HFP
Quick Charge Port	Support QC3.0 protocol (DC 5V/3A, 9V/2A, 12V/1.5A)

Power On/ Off

Power On: Plug the BH378 into car's cigarette lighter, and power it on by starting your car.

Power Off: Power it off by cutting its power.

Color Selection of Ring RGB light




Short press RGB light button , and press once to change one color each time. You can choose your favorite color from Ferrari-Red,

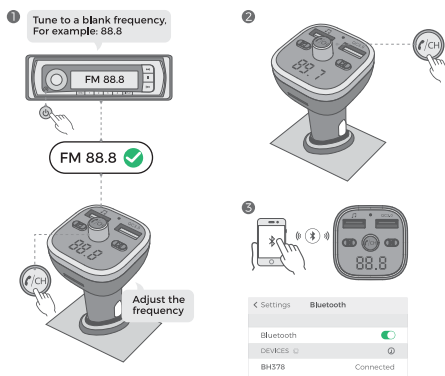
Aston Martin-Green, BMW-Blue, Lamborghini-Yellow, Purple, white and Subaru-WR Blue, and short press  at the seventh time to turn off the light.

OPERATION GUIDE

1. FM Tuning and Bluetooth Pairing

Cautions: In order for you to enjoy music of higher quality, you need to adjust the blank frequency of the BH378 to be the same as that of your car when you use it for the first time (Not local broadcasting channel), and please confirm the same frequency between the transmitter and your car when every time you use it (Not local broadcasting channel).

- 1) Adjust your car FM frequency to a blank channel (A channel without any broadcast)
- 2) Long press the CH button  for 3 sec to enter into FM mode:
Increase frequency by rotating knob button clockwise or short pressing "Next Track " (Long press to adjust frequency fast), and decrease frequency by rotating knob button anticlockwise or short pressing "Previous Track " (Long press to adjust frequency fast). Adjust the blank frequency channel of BH378 to be the same as that of your car, e.g., FM88.8.
- 3) Bluetooth Connection: Turn on the Bluetooth of the smart device, search "BH378" and connect it, and then it's available. (When you use the product for the second time, the BH378 will reconnect the last device that connected in the last time.)



2. Bluetooth Hands-free Function

- A. Answer a Call: Short press CH button "CH"
- B. Hang up a Call: Short press CH button "CH"
- C. Redial the Last Phone Number: Double press CH button "CH"
- D. Reject a Call: Long press CH button "CH"

3. Music Function (Please ensure the successful connection before use)

3.1 Bluetooth/U Disk/TF Card - 3 Music Sources

- A. Bluetooth Mode: The Bluetooth instructions can refer to a smart


device, e.g., phone. Play the music on smart device after the Bluetooth is connected successfully, and then the music will be played through car speaker.

B. TF card/U Disk Mode: Plug the TF card/U Disk, and the BH378 will automatically recognize it and play the music in it.



Notice: To ensure a good experience, please select only one music source to play music when you use the product.

3.2 Music Sources Selection

- A. Bluetooth/U Disk/TF Card Switch: Long press "Next Track"  to switch music modes among Bluetooth, U disk and TF card.
- B. Select TF Card/U Disk to Play Music Automatically: Plug and Play.
- C. Power-off Memory Function: The BH378 will enter the previous playing mode if it's restarted after cutting the power. (It plays music automatically under U disk mode and need to manually play music under Bluetooth mode.)

3.3 Music Playing Operation

- A. Play/Pause: Short press .
- B. Previous Track/Next Track: Short Press  and .
- C. Volume Up: Rotate the knob button clockwise.
- D. Volume Down: Rotate the knob button anticlockwise.

4. QC3.0 Instruction

- 1) For some smart devices that don't support quick charge, the default output of this product is 5V/2.4A.
- 2) For some smart devices that support quick charge, the Max voltage and current of QC3.0 is DC 5V/3A, 9V/2A, 12V/1.5A.

5. FAQ (Diagram)

5.1 Noise Problems

Solutions:

- A. Turn up the volume of car speaker to its 1/3 level, and prioritize to turn up the volume of FM or smart devices.



- B. Signal interference. Switch to other blank frequency channel.



5.2 Person you called can't hear you

Case 1: There is a problem of choosing ways for phone calling.

Solutions:

- A. Select BH378 and answer the call via car speaker.
- B. Answer the call via phone speaker.

Case 2: The volume is too low.

Solutions:

A. Turn up the volume of your phone or FM transmitter.

B. The volume on the other end of the call is too low. Ask the other side of the phone to speak up.

Case 3: Broken microphone

Solution: Contact the customer service.

CORRECT DISPOSAL OF THIS PRODUCT



(Waste Electrical & Electronic Equipment)

This marking shown on the product or its literature, indicates that it should not be disposed with other household wastes at the end of its working life.

To prevent possible harm to the environment or human health from uncontrolled waste disposal, please separate this from other types of wastes and recycle it responsibly to promote the sustainable reuse of material resources.

Household user should contact either the retailer where they purchased this product or their local government office for details of where and how they can take this item for environmentally safe recycling.

Business users should contact their supplier and check the terms and conditions of the purchase contract.

This product should not be mixed with other commercial wastes for disposal.

FCC STATEMENT

Note: This equipment has been tested and found to comply with the limits for a Class B digital device, pursuant to part 15 of the FCC Rules. These limits are designed to provide reasonable protection against harmful interference in a residential installation. This equipment generates uses and can radiate radio frequency energy and, if not installed and used in accordance with the instructions, may cause harmful interference to radio communications. However, there is no guarantee that interference will not occur in a particular installation. If this equipment does cause harmful interference to radio or television reception, which can be determined by turning the equipment off and on, the user is encouraged to try to correct the interference by one or more of the following measures:

- Reorient or relocate the receiving antenna.
- Increase the separation between the equipment and receiver.
- Connect the equipment into an outlet on a circuit different from that to which the receiver is connected.
- Consult the dealer or an experienced radio/TV technician for help

Changes or modifications not expressly approved by the party responsible for compliance could void the user's authority to operate the equipment. This device complies with Part 15 of the FCC Rules. Operation is subject to the following two conditions:

- (1) this device may not cause harmful interference, and
- (2) this device must accept any interference received, including interference that may cause undesired operation.