



Bluetooth FM Transmitter

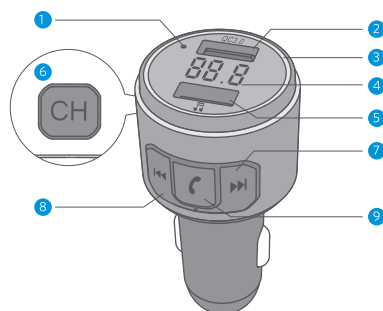
USER MANUAL

EN DE FR IT ES JP

English	01
Deutsch	10
Français	18
Italiano	26
Español	34
日本語	42

STRUCTURE (DIAGRAM)

EN



- 1 Microphone
- 2 QC3.0 Quick Charge Port (DC 3.5-6.5V/3A, 6.5-9V/2A, 9-12V/1.5A)
- 3 LED Ring Light
- 4 Digital Display Screen
- 5 U Disk Port (Max. 32G)/5V-1A Charging Port
- 6 CH Button (Short press to enter into FM mode. Double press to turn on/off the LED ring light. In power-off state, long press for 2 sec to power on. In power-on state, long press for 3 sec to power off)
- 7 Short Press to Next Track/Long Press to Increase Volume
- 8 Short Press to Previous Track/Long Press to Decrease Volume
- 9 Multifunctional Button: Pause/Play/Hands-free Calls (Answer/Hang Up/Reject a Call). Long press for 2 sec to activate or log out of Siri

SPECIFICATIONS

Product Name	BH347
Effective Distance	5m
Compatible Audio Format	MP3. WMA. WAV. FLAC
Compatible Bluetooth Protocol	A2DP/AVRCP/HSP/HFP
Quick Charge Port	Support QC3.0 Protocol (DC 3.5-6.5V/3A, 6.5-9V/2A, 9-12V/1.5A)

Power On/Off

Power On: Plug the BH347 into car's cigarette lighter, and it will turn on automatically with blue LED ring light flashing once per second after you started your car. Long press "CH" button for 2 sec to turn on the BH347 if it's been turned off before.

Power Off: You can turn it off by cutting its power or long pressing "CH" button for 3 sec if it's energized.

Note: The charging port can function normally even after you press "CH" button to turn off the BH347.

LED Ring Light Instructions

1. The blue LED ring light will flash once per second after power on, which indicates that it's in the status of waiting for pairing.
2. The light will turn off if it's unconnected in 5 min (Keep waiting for Bluetooth pairing).

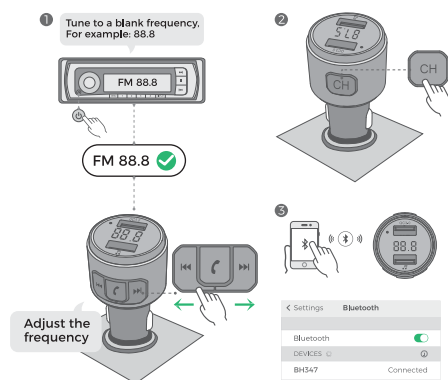
3. If it's connected successfully, the blue LED ring light will stay on.
4. Double press CH button to turn on/off the LED ring light.

OPERATION GUIDE

1. FM Tuning and Bluetooth Pairing

Cautions: In order for you to enjoy music of higher quality, you need to adjust the blank frequency of the BH347 to be the same as that of your car when you use it for the first time (Not local broadcasting channel), and please confirm the same frequency between the transmitter and your car when every time you use it (Not local broadcasting channel).

- 1.1. Adjust your car FM frequency to a blank channel (A channel without any broadcast), e.g., FM88.8.
- 1.2. Short press "CH" button to enter into FM mode with digital font flashing. Short press "Previous Track◀◀" to decrease frequency and short press "Next Track▶▶" to increase frequency (Long press to adjust frequency fast). Adjust the frequency channel of BH347 to be the same as that of your car, e.g., FM88.8. Short press "CH" button again or wait for 3 sec. to exit from FM mode.
- 1.3. Bluetooth Connection:
 - A. The blue LED light of BH347 will flash once per second after power on, which indicates that it's waiting for pairing.
 - B. Turn on the Bluetooth of the smart device, search "BH347" and connect it. After the connection is completed, the blue light of LED ring light will stay on, and then you can play music through it. (When you use the product for the second time, the BH347 will reconnect the last device that connected in the last time.)



2. Bluetooth Hands-free Function

- A. Answer a Call: Short press the "☎" button.
- B. Hang up a Call: Short press the "☎" button.
- C. Redial the Last Phone Number: Double press the "☎" button.
- D. Reject a Call: Long press the "☎" button for 2 sec.
- E. Turn to Private Call: Short Press "CH" button.

3. Music Function (Please confirm the successful connection before use)

3.1. 2 Audio Sources: Bluetooth/U disk

A. Bluetooth Mode: Refer to the instructions of your smart device, e.g., phone. After Bluetooth connected, play music on the smart device and the music can be synchronized to the in-car speaker.




B. U Disk Mode: Plug the U Disk, and the BH347 will automatically recognize it and play the music in it.








Notice: To ensure a good experience, please select only one audio source to play music when you use the product.



3.2. Audio Source Selection

- A. Switch Bluetooth and U Disk: Press “” and “CH” simultaneously for 2 sec to switch playing modes between Bluetooth and U disk.
- B. Automatic Playing Option via U disk: Plug and play.
- C. The BH347 will enter the previous playing mode if you reboot it after cutting its power. (It plays music automatically under U disk mode and need to manually play music under Bluetooth mode.)

3.3. Audio Playing Operation

- A. Play/Pause: Short press .
- B. Previous Track/Next Track: Short press  / .
- C. Volume Up: Long press .
- D. Volume Down: Long press .

4. Voice Assistant

- 4.1. Long press the phone button  for 2 sec to log in to the voice assistant.
- 4.2. Long press the phone button  for 2 sec to log out of the voice assistant.

5. QC3.0 Instruction

- 5.1. For the device that doesn't support quick charge, the max output is 5V/2.4A.
- 5.2. For the smart device that supports quick charge, the MAX output of the QC3.0 is DC 3.6-6.5V/3A, 6.5-9V/2A, 9-12V/1.5A.

6. FAQ (Diagram)

6.1. Noise Problem

Solutions:

- A: Lower the speaker volume to 1/3 volume level and increase the volume on the FM radio or the smart device.



B. Signal interference. Change to the other blank frequency station.



6.2. Person You Called Can't Hear You

Case 1: The calling method goes wrong.

Solutions:

- A. Choose BH347A and answer the call via in-car speaker.
- B. Choose the phone speaker to answer the call.

Case 2: The volume is too low.

Solutions:

- A. Increase the volume on your phone or the FM transmitter.
- B. The volume on the other end of the call is too low. Ask the other side of the phone to speak up.

Case 3: The microphone is broken.

Solution: Contact the customer service for help.

CORRECT DISPOSAL OF THIS PRODUCT



(Waste Electrical & Electronic Equipment)

This marking shown on the product or its literature, indicates that it should not be disposed with other household wastes at the end of its working life.

To prevent possible harm to the environment or human health from uncontrolled waste disposal, please separate this from other types of wastes and recycle it responsibly to promote the sustainable

reuse of material resources.

Household user should contact either the retailer where they purchased this product or their local government office for details of where and how they can take this item for environmentally safe recycling.

Business users should contact their supplier and check the terms and conditions of the purchase contract.

This product should not be mixed with other commercial wastes for disposal.

FCC STATEMENT

Note: This equipment has been tested and found to comply with the limits for a Class B digital device, pursuant to part 15 of the FCC Rules. These limits are designed to provide reasonable protection against harmful interference in a residential installation. This equipment generates uses and can radiate radio frequency energy and, if not installed and used in accordance with the instructions, may cause harmful interference to radio communications. However, there is no guarantee that interference will not occur in a particular installation. If this equipment does cause harmful interference to radio or television

reception, which can be determined by turning the equipment off and on, the user is encouraged to try to correct the interference by one or more of the following measures:

- Reorient or relocate the receiving antenna.
- Increase the separation between the equipment and receiver.
- Connect the equipment into an outlet on a circuit different from that to which the receiver is connected.
- Consult the dealer or an experienced radio/TV technician for help

Changes or modifications not expressly approved by the party responsible for compliance could void the user's authority to operate the equipment. This device complies with Part 15 of the FCC Rules. Operation is subject to the following two conditions:

- (1) this device may not cause harmful interference, and
- (2) this device must accept any interference received, including interference that may cause undesired operation.