

承 认 书

公 司 名 称 (客户填写): 深圳市艾普达科技有限公司

物 料 代 码 (客户填写): _____

规 格 型 号 (客户填写): NI1569P0EB

承 认 日 期 (客户填写): _____

供 应 商 名 称 (SLK 填写): 深圳市亿圣邦科技有限公司

供 应 商 规 格 型 号 (SLK 填写): WIFIMAIN:SLK-APD-2025B-R-320IV-B

WIFIAUX:SLK-APD-1614C-R-60IV-G

承 认 签 章

供 应 商 承 认 (SLK 填写栏)			深圳市艾普达科技有限公司		
工 程 师	审 核	批 准	工 程 师	审 核	批 准
陈仕联	黄震	林美财			
盖 章 签 署			盖 章 签 署		
日 期	2022-08-16		日 期		
批示: <input type="checkbox"/> 接受 <input type="checkbox"/> 有条件接受					
备注 (客户填写):					

供应商名称: 深圳市亿圣邦科技有限公司

供应商地址: 东莞市塘厦镇蛟乙塘银园街 13 号厂房 2 楼

电 话: 0755-29470882

传 真: 0755-29163512

WIFIMAIN Antenna (2025B)

1. Explanation of Product number :

S L K - A P D - 2 0 2 5 B - R - 3 2 0 I V - B

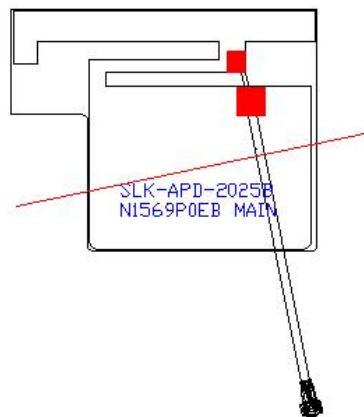
1

2

3

4

5



Product Code:

(1) Customer:

APD: 艾普达

(2) Project:

2025B: SLK-2025B (WIFIMAIN antenna)

(3) Welding Position

R: Ring

(4) Cable Length:

320IV: 320*1.13MM四代端子

(5) Cable Color

B: Black

2. Features

*Stable and reliable in performances

*Compact size

*RoHS compliance

3. Applications

- * IEEE3202.11 (a/b/g/n)
- * Hand-held devices when WIFI (3202.11 a/b/g/n) functions are needed

4. Description

Holy bond's FPC antenna series are specially designed for WIFI (3202.11 a/b/g/n) applications. Based on Holy bond's proprietary design and processes, this FPC antenna has excellent stability and sensitivity to consistently provide high signal reception efficiency.

5. Electrical Specifications

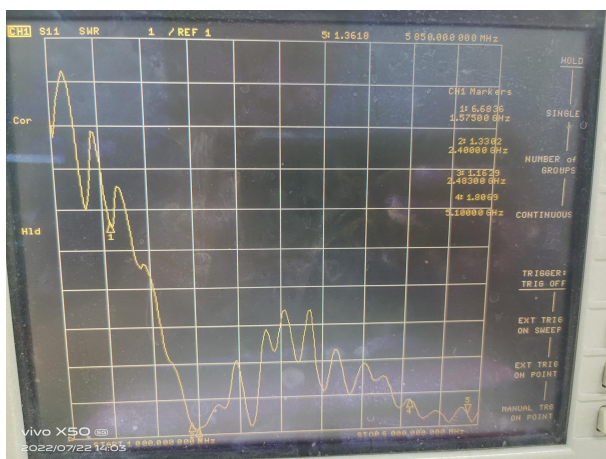
5-1

Characteristics	Specifications	Unit
Outline Dimensions	25.43x 20.09x 0.12	mm
Center Frequency	2.4-2.5-5.15-5.85	GHz
Bandwidth(under-10dB return loss)	130min	MHz
VSWR	3max	

5-2.

VSWR

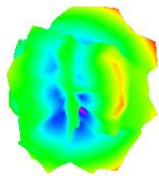
S11



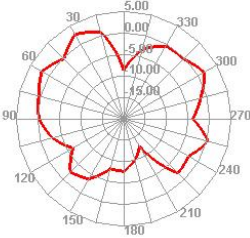
5-3.WIFI Antenna Gain/Efficiency/Radiation Pattern of 3D

Freq (MHz)	Effi (%)	Effi (dB)	Gain (dBi)	WIFI 有源测试			
2400	58.87	-2.3	3.19	频段	1	6	11
2410	54.15	-2.66	2.79	B-TRP-11Mbps	13.02	13.11	13.22
2420	53.74	-2.7	2.76	B-TIS-11Mbps	-79.45	-79.69	-80.03
2430	49.98	-3.01	2.39	G-TRP-54Mbps	11.87	12.05	12.16
2440	53.95	-2.68	2.71	G-TIS-54Mbps	-66.59	-67.11	-67.25
2450	52.82	-2.77	2.63	N-TRP-MCS7	11.48	12.09	12.21
2460	51.01	-2.92	2.38	N-TIS-MCS7	-65.23	-66.17	-66.64
2470	49.73	-3.03	2.3	频段	36	149	165
2480	50.35	-2.98	2.25	A-TRP-54Mbps	10.78	11.08	11.23
2490	52.96	-2.76	2.53	A-TIS-54Mbps	-69.32	-69.18	-69.26
2500	53.01	-2.76	2.65				
5150	39.83	-4	1.5				
5350	43.08	-3.66	1.58				
5550	46.12	-3.36	2.5				
5750	46.56	-3.32	1.84				
5850	40.89	-3.88	1.69				

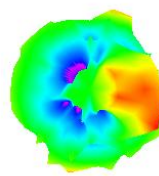
2450.000MHz



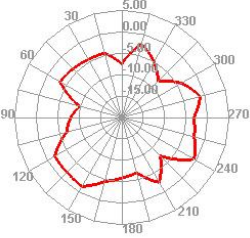
2450.000MHz H



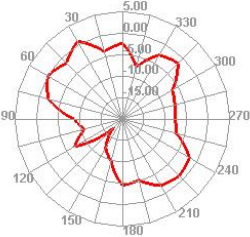
5850.000MHz



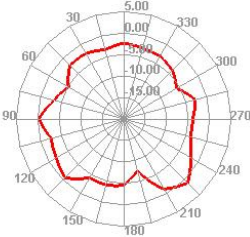
5850.000MHz H



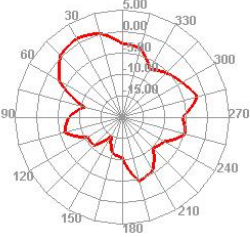
2450.000MHz E1



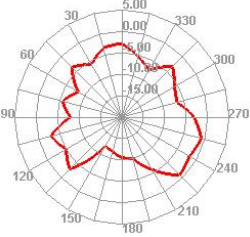
2450.000MHz E2



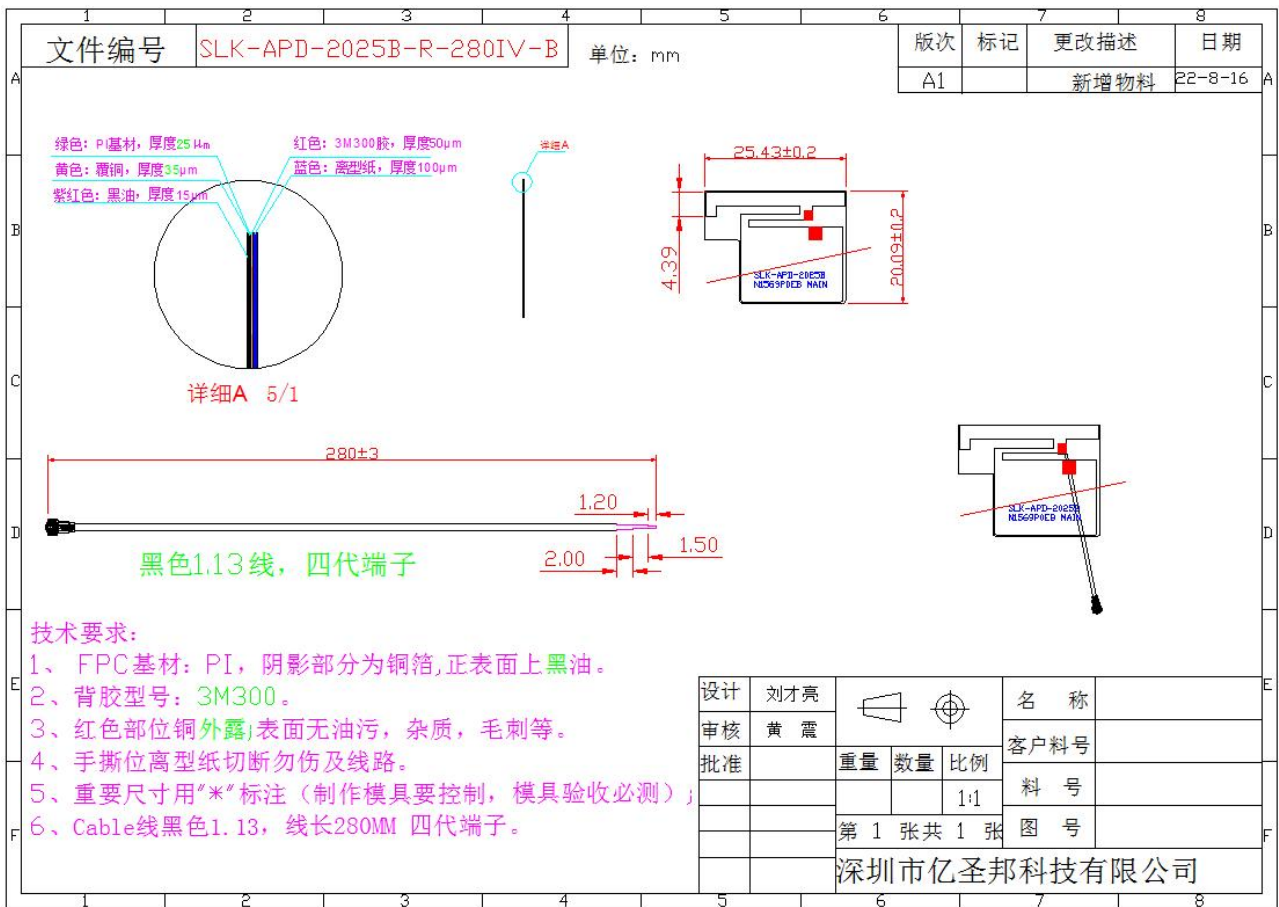
5850.000MHz E1



5850.000MHz E2



6. Antenna Dimensions (unit: mm)

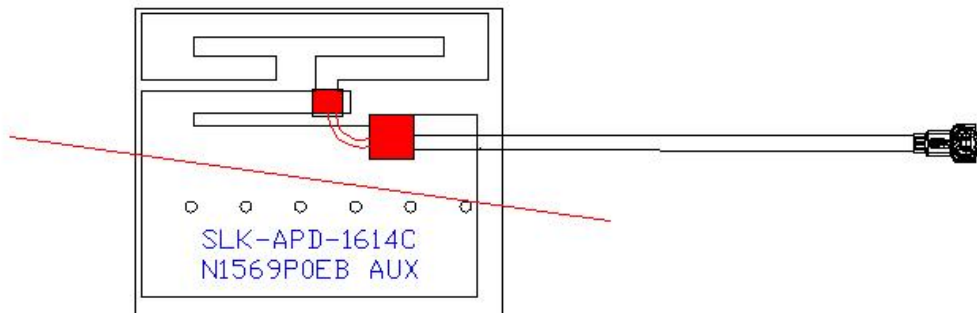


WIFIAUX Antenna (1614C)

1.Explanation of Product number :

S L K - A P D - 1 6 1 4 C - R - 6 0 I V - G

1 2 3 4 5



Product Code:

(1) Customer:

APD: 艾普达

(2) Project:

2025B: SLK-2025B (WIFIAUX antenna)

(3) Welding Position

R:Right

(4) Cable Length:

60IV: 60*1.13MM四代端子

(5)Cable Color

G: Gray

2. Features

*Stable and reliable in performances

*Compact size

*RoHS compliance

3. Applications

- * IEEE3202.11 (a/b/g/n)
- * Hand-held devices when WIFI (3202.11 a/b/g/n) functions are needed

4. Description

Holy bond's FPC antenna series are specially designed for WIFI (3202.11 a/b/g/n) applications. Based on Holy bond's proprietary design and processes, this FPC antenna has excellent stability and sensitivity to consistently provide high signal reception efficiency.

5. Electrical Specifications

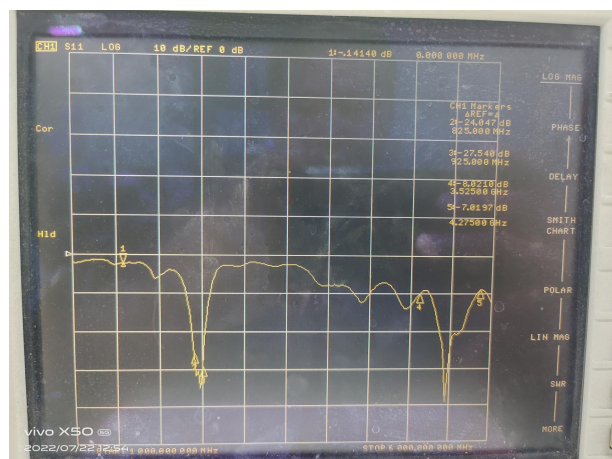
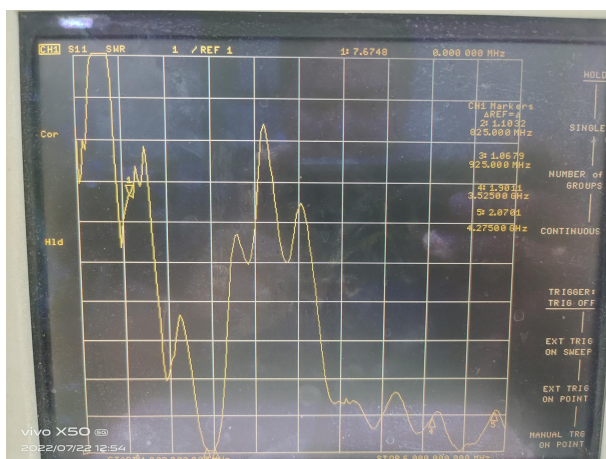
5-1

Characteristics	Specifications	Unit
Outline Dimensions	16.71x 14.03 x 0.12	mm
Center Frequency	2.4-2.5-5.15-5.85	GHz
Bandwidth(under-10dB return loss)	130min	MHz
VSWR	3max	

5-2.

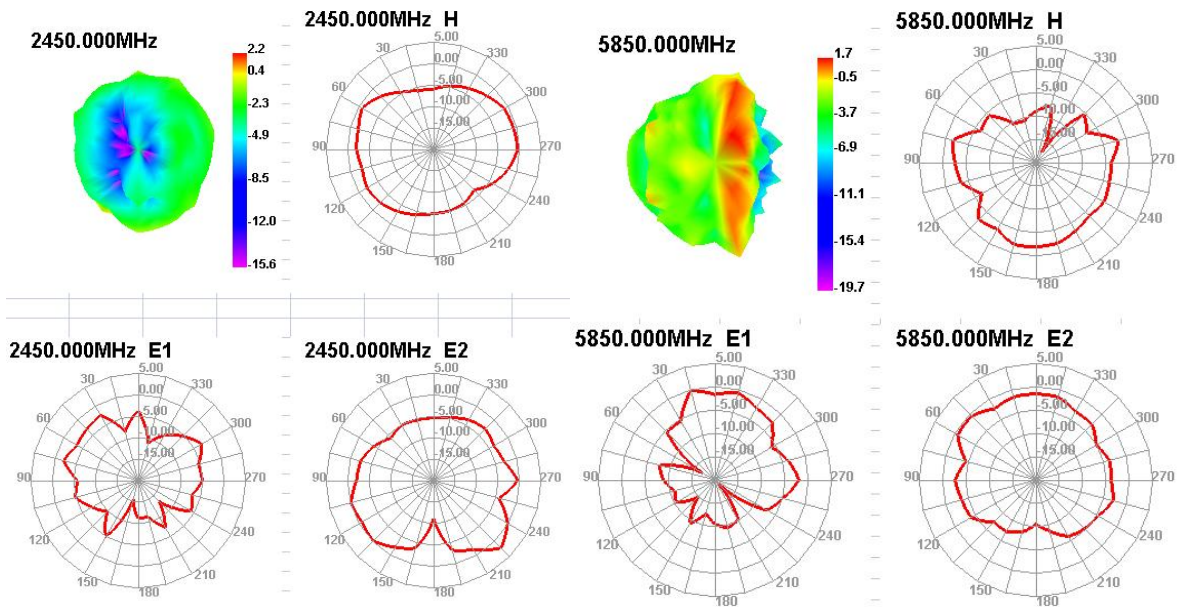
VSWR

S11

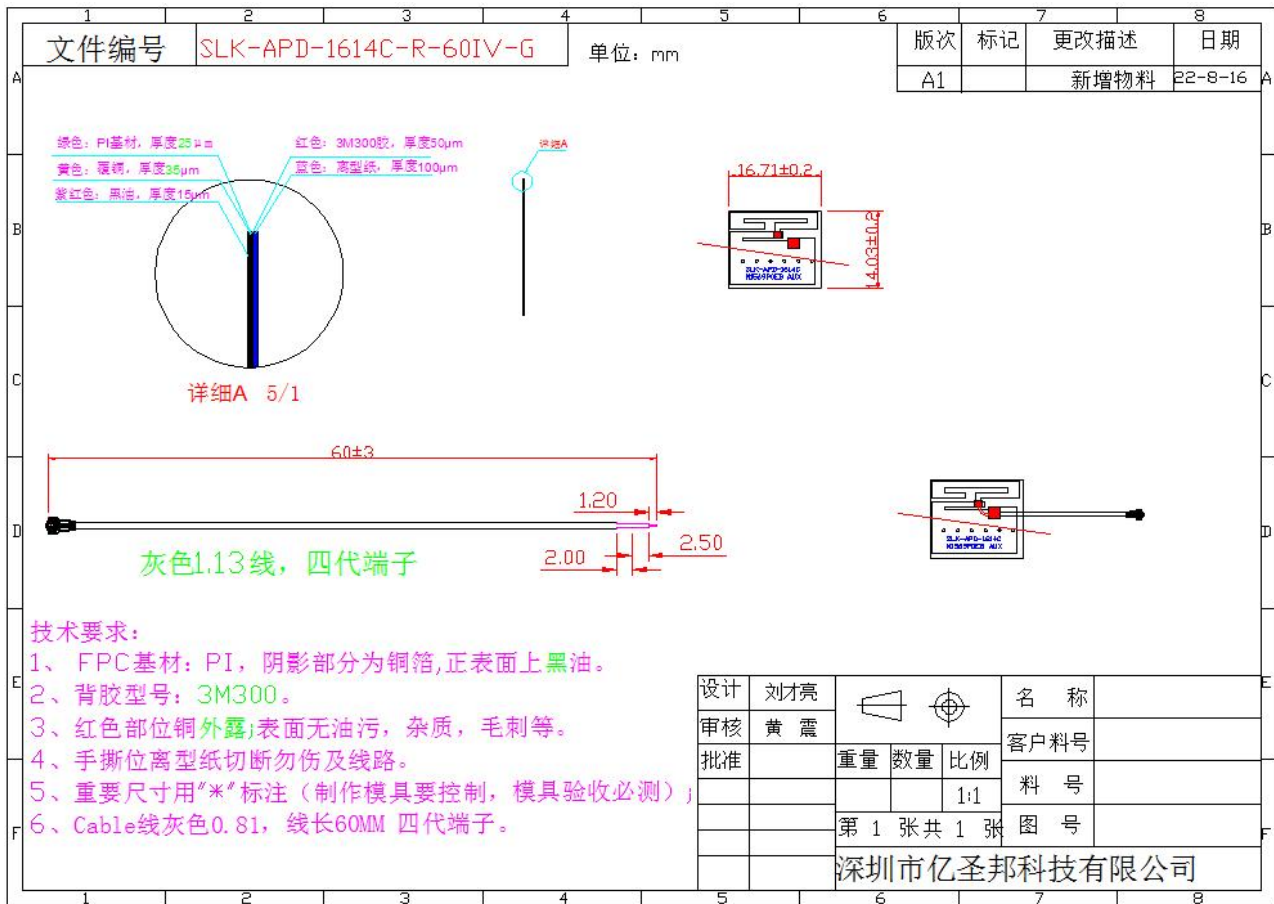


5-3.WIFI Antenna Gain/Efficiency/Radiation Pattern of 3D

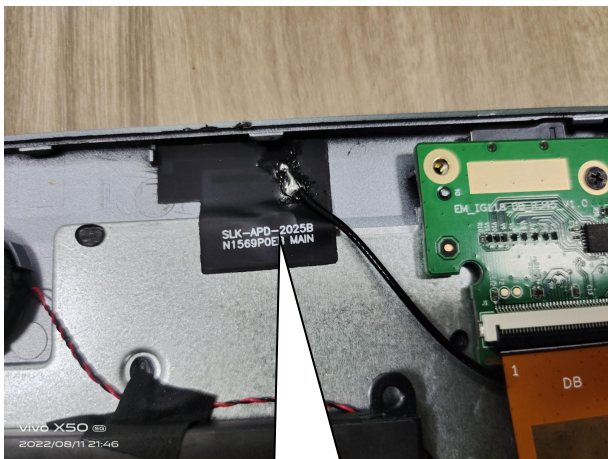
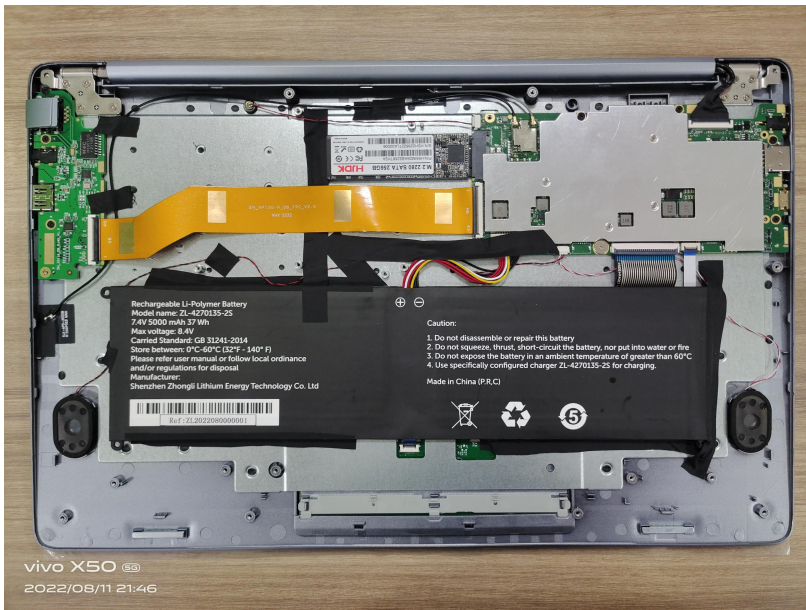
Freq (MHz)	Effi (%)	Effi (dB)	Gain (dBi)	WIFI 有源测试			
2400	40.3	-3.95	1.59	频段	1	6	11
2410	45.32	-3.44	2	B-TRP-11MBps	13.02	13.11	13.22
2420	42.76	-3.69	1.69	B-TIS-11MBps	-79.45	-79.69	-80.03
2430	45.89	-3.38	2.06	G-TRP-54MBps	11.87	12.05	12.16
2440	44.37	-3.53	1.9	G-TIS-54MBps	-66.59	-67.11	-67.25
2450	47.75	-3.21	2.16	N-TRP-MCS7	11.48	12.09	12.21
2460	44.96	-3.47	1.92	N-TIS-MCS7	-65.23	-66.17	-66.64
2470	47.86	-3.2	1.95	频段	36	149	165
2480	47.4	-3.24	1.68	A-TRP-54MBps	10.78	11.08	11.23
2490	50.09	-3	1.71	A-TIS-54MBps	-69.32	-69.18	-69.26
2500	48.54	-3.14	1.61				
5150	38.79	-4.11	0.94				
5350	40.28	-3.95	2.25				
5550	40.28	-3.95	2.35				
5750	40.63	-3.91	2.62				
5850	40.02	-3.98	1.69				



6. Antenna Dimensions (unit: mm)



7. Antenna Picture



WIFI 主天线



WIFI 分集天线