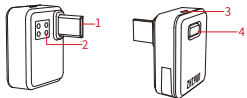


Brief Introduction

TransMount CRANE-M3 Bluetooth Control Unit (hereinafter referred to as "Bluetooth control unit") is dedicated to CRANE-M3. When installed the Bluetooth control unit to the USB port of the camera and connected to CRANE-M3, the camera can be wirelessly controlled with the buttons on the CRANE-M3. There are three types of USB ports available for the Bluetooth control unit: Micro, Type-C, and Multi. Make sure to choose proper Bluetooth control unit corresponding to the USB port type of your camera. For more details of the supported camera models, please visit the official website of ZHIYUN (www.zhiyun-tech.com) and check the "CRANE-M3 Camera Compatibility List". TransMount CRANE-M3 Expansion Base (hereinafter referred to as "expansion base") can be mounted to the bottom of the CRANE-M3 handle to charge and pack Bluetooth control unit and to perform Bluetooth pairing and firmware upgrade. The 6.5mm audio input port at the expansion base can be connected to the TransMount Shotgun Microphone for high-quality audio solutions in scenes like interviews and audio recording.

1

Get to Know TransMount CRANE-M3 Bluetooth Control Unit



- 1. USB Port**
 *Three types of ports are available: Micro, Type-C and Multi. The images use Multi port as examples.

- 2. Contact Points**
3. Indicator Light (indicates current status)

Light	Indication
Quick flashing red light	Firmware upgrade
Slow flashing red light	Low battery
Double-flashing red light	Failed to upgrade firmware

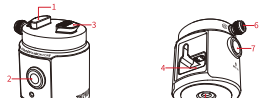
2

Solid red light	Bluetooth malfunction
Quick flashing green light	Power on/off
Slow flashing green light	Charging in progress
Solid green light	Charging complete
Quick flashing blue light	Searching Bluetooth
Double-flashing blue light	Bluetooth unpaired. Install to the expansion base to pair.
Solid blue light	Bluetooth paired

- 4. Power Button**
 *Long press for 2s: Power on/off
 *Long press for 6s: Reset Bluetooth

3

Get to Know TransMount CRANE-M3 Expansion Base



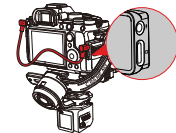
- 1. Expansion Base Tenon**
2. 1/4" Threaded Hole
3. Contact Points for CRANE-M3
 *Can be connected to CRANE-M3 when installed to the CRANE-M3 handle.
4. Bluetooth Control Unit Slot
 *To charge and pack the Bluetooth control unit and to perform Bluetooth pairing and firmware upgrade.
5. 1/4" Threaded Hole
6. Expansion Base Lock Screw
7. Microphone Input Port

Supported functions may vary for different cameras. For more details of the supported camera models and functions, please visit the official website of ZHIYUN (www.zhiyun-tech.com) and check the "CRANE-M3 Camera Compatibility List".

2. TransMount CRANE-M3 Expansion Base

Besides charging and packing the Bluetooth control unit, performing Bluetooth pairing and firmware upgrade, the expansion base can also be used to connect TransMount Shotgun Microphone for high-quality audio solutions in scenes like interviews and audio recording.

- ① Connect the microphone input port of the camera and the audio transmission port of CRANE-M3 with the audio cable.

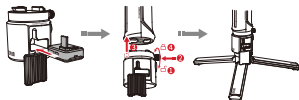


8

Battery and Charging

Bluetooth control unit is equipped with built-in battery. When using Bluetooth control unit for the first time, please fully charge the battery to activate them and to ensure the proper function of the product.

Charging method: Install the Bluetooth control unit to the expansion base and mount the expansion base to the CRANE-M3. Power on the CRANE-M3 to charge. The green light on the Bluetooth control unit slowly flashes when charging. When the green light turns solid, the charging is complete.



- It is recommended to fully charge the device each time before using. The performance will be affected if the battery is too low.

5

Bluetooth Pairing

When connecting to CRANE-M3 for the first time, the Bluetooth control unit should be paired with the gimbal.
 Pairing method: Install the Bluetooth control unit to the expansion base (1), power on the CRANE-M3 (2), wait for approx. 3 secs for the control unit to be automatically paired with the gimbal.



6

How to Install and Use

1. TransMount CRANE-M3 Bluetooth Control Unit

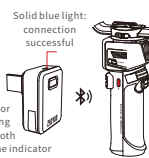
- ① Install Bluetooth control unit to the USB port of the camera. Make sure to choose proper Bluetooth control unit corresponding to the USB port type.



6

② Power on CRANE-M3 and Bluetooth control unit.

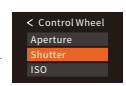
When completed the initial Bluetooth pairing, the Bluetooth control unit will automatically search to connect the CRANE-M3 Bluetooth while the indicator light turns into quick flashing blue light. When the Bluetooth connection is successful, the indicator light will turn into a solid blue light.



3

③ When the Bluetooth connection is successful, you can control the camera to take photos/film videos via the filming button on CRANE-M3.

For adjusting camera parameters, go to "Settings" - "Control Wheel" in the touch screen menu to customize your parameter settings and slide the adjustment wheel to adjust.



7

Firmware Upgrade

Install the Bluetooth control unit to the TransMount CRANE-M3 Expansion Base. Power on CRANE-M3. If a new version of the firmware is available, the Bluetooth control unit will automatically start the upgrade. The CRANE-M3 touch screen will inform you of the current upgrade status.

- For more details on how to use CRANE-M3, please visit the official website of ZHIYUN (www.zhiyun-tech.com) and watch the CRANE-M3 video tutorials.

10

Product Specifications

Product Model : COB08/COB09/COB10

	Min.	Standard	Max.	Remark
Operation Voltage	3.3V	3.7V	4.2V	
Operation Current		25mA		
Operation Temperature	-10°C	25°C	45°C	
Battery Capacity	-	50mAh	-	
Battery Runtime	-	2H	-	Lab Data 1
Charging Time	-	1H	-	Lab Data 2
Bluetooth Control Unit Net Weight	-	≈5g	-	
Bluetooth Control Unit Size (Micro)	-	≈25*20*18mm	-	
Bluetooth Control Unit Size (Type-C)	-	≈25*20*15mm	-	
Bluetooth Control Unit Size (Multi)	-	≈25*20*18mm	-	
Bluetooth	-	5.0	-	
Operation Frequency	-	2.4GHz	-	

11

Lab Data 1: The above data is collected at a specified temperature of 25°C. When the Bluetooth Control Unit (Micro) with the fully-charged 50mAh battery is installed to a EOS 200D Mark II camera, the runtime is 2H.

Lab Data 2: The above data is collected at a specified temperature of 25°C with the TransMount CRANE-M3 Expansion Base mounted to a fully-charged CRANE-M3. The charging time is 1h. The actual charging time varies with environmental factors. In addition, the lower the temperature, the longer the charging time.

Disclaimer and Warning

Thank you for purchasing TransMount CRANE-M3 Bluetooth Control Unit/TransMount CRANE-M3 Expansion Base. The information contains herein affects your safety, legitimate rights and obligation. Please read this instruction carefully to ensure proper configuration before use. Failure to read and follow this instruction and warnings herein may result in serious injury to you or bystanders, or damage to your device or property. Guilin Zhishen Information Technology Co., Ltd (hereinafter referred to as "ZHIYUN") reserves all rights for final explanation on this instruction and other documents related

12

to Bluetooth control unit/expansion base. The information is subject to update without notice. Please visit www.zhiyun-tech.com to obtain the latest product information. By using this product, you hereby signify that you have read this document carefully and that you understand and agree to abide by the terms and conditions herein. You agree that you are solely responsible for your own conduct while using this product, and for any consequences thereof. You agree to use this product only for purposes that are proper and in accordance with all terms, precautions, practices, policies and guidelines ZHIYUN has made and may make available. ZHIYUN accepts no liability for damage, injury or any legal responsibility incurred directly or indirectly from the use of this product. Users shall observe safe and lawful practices including, but not limited to, those set forth herein.

ZHIYUN™, TransMount™ are the trademarks of Guilin Zhishen Information Technology Co., Ltd and its affiliates. All product names or trademarks referred to herein are trademarks or registered trademarks of their respective holders.

Reading Tips

Legends: Hints and Tips Important

13

Battery Storage

- Keep batteries out of the reach of children and pets.
- Do not leave the battery near heat sources such as a furnace or heater, or inside of a vehicle on hot days. Never expose the battery in any environment with temperature of over 60°C. The ideal storage temperature is 22°C-28°C.
- Store batteries in a dry environment.
- Do not leave the battery unused for too long after it has been completely discharged to prevent over-discharge of battery which may result in battery damage and permanent failure.

Battery Maintenance

- Do not over-charge or over-discharge the battery, which will damage the battery.
- The battery performance will be affected for not being used for a long time;
- Never use the battery when the temperature is too high or too low;
- Recharge and discharge every 3 months to keep the battery active.

Battery Disposal

- Please fully discharge the battery before putting it in the designated recycling bin. Batteries contain hazardous

16

constituents and it is forbidden to put the battery in general waste bin. For related details please abide by the local laws and regulations on battery recycling and disposal.

Warranty Period

- Customers are entitled to replacement or free repair service in case of quality deficits found in the product within 15 days upon receipt of the product.
- Customers are entitled to free repair service from ZHIYUN for any product proven defective in material or workmanship that results in product failure during normal consumer usage and conditions within the valid warranty period, which is 12 months counting from the date of selling. However, warranty period varies by product component and country of purchase. Please contact our after-sales service team on the ZHIYUN official website or your place of purchase for detailed warranty information.

17

Warnings

Read the ENTIRE User Guide to become familiar with the features of this product before operating. Failure to operate the product correctly can result in damage to the product or personal property and cause serious injury. This is a sophisticated product. It must be operated with caution and common sense and requires some basic mechanical ability. Failure to operate this product in a safe and reasonable manner could result in injury or damage to the product or other property. This product is not intended for use by children without direct adult supervision. DO NOT use with incompatible components or in any way otherwise as mentioned or instructed in the product documents provided by ZHIYUN. The safety guidelines herein contain instructions for safety, operation and maintenance. It is essential to read and follow all of the instructions and warnings in the User Guide, prior to assembly, setup or use, in order to operate the product correctly and avoid damage or serious injury.

Safe Operation Guidelines

CAUTION:

- Bluetooth control unit/expansion base are high-precision control devices. Damage may be caused to the Bluetooth control unit/

14

Warranty Exclusions

- Products subjected to unauthorized repair, misuse, collision, neglect, mishandling, soaking, accident, and unauthorized alteration.
- Products subjected to improper use or whose labels or security tags have been torn off or altered.
- Products whose warranty has expired.
- Products damaged due to force majeure, such as fire, flood, lightning, etc.

Warranty Claim Procedure

- If failure or any problem occurs to your product after purchase, please contact a local agent for assistance, or you can always contact ZHIYUN's customer service through email at info@zhiyun-tech.com or website at www.zhiyun-tech.com.
- Your local agent or ZHIYUN's customer service will guide you through the whole service procedure regarding any product issue or problem you have encountered. ZHIYUN reserves the right to reexamine damaged or returned products.

18

expansion base if dropped or subject to external force, and this may result in malfunction.

- Bluetooth control unit/expansion base are not waterproof. Prevent contacts of any kind of liquid or cleaner with the Bluetooth control unit/expansion base. It is recommended to use dry cloth for cleaning.

3. Protect Bluetooth control unit/expansion base from dust and sand during use.

WARNING: To avoid fire, serious injury, and property damage, observe the following safety guidelines when using, charging, or storing your batteries.
 Use: Please make sure the battery power is sufficient each time before you use it.

Battery Charging

- Do not put the battery and charger near flammable materials or on flammable surfaces (such as carpet or wood). Never leave the battery unattended during charging to prevent any accident.
- Do not charge the battery immediately after use, because the battery temperature may be too high. Do not charge the battery until it cools down to normal room temperature. Charging the battery with its temperature over 45°C or lower than 0°C may lead to leakage, overheating, or damage.

15



Please download the latest version from www.zhiyun-tech.com. This document is subject to change without notice.

ZHIYUN™ are the trademarks of ZHISHEN. Copyright © 2021 ZHISHEN. All rights reserved.

Tel: +86 400 900 6668
 USA Hotline: +1 808-319-6137 9:00-18:00 GMT-7, Mon-Fri
 Europe Hotline: +49 (0)6101 8132 180, 10:00-17:00 GMT+1, Mon-Fri
 Email: info@zhiyun-tech.com
 Website: www.zhiyun-tech.com
 Address: 09 Huangtong Road, Tieshan Industrial Zone, Qixing District, Guilin, 541004, Guangxi, China

19

FCC Statement:

Any changes or modifications not expressly approved by the party responsible for compliance could void the user's authority to operate this equipment.

This device complies with Part 15 of the FCC Rules. Operation is subject to the following two conditions: (1) This device may not cause harmful interference, and (2) this device must accept any interference received, including interference that may cause undesired operation.

Note: This equipment has been tested and found to comply with the limits for a Class B digital device, pursuant to part 15 of the FCC Rules. These limits are designed to provide reasonable protection against harmful interference in a residential installation. This equipment generates, uses and can radiate radio frequency energy and, if not installed and used in accordance with the instructions, may cause harmful interference to radio communications. However, there is no guarantee that interference will not occur in a particular installation. If this equipment does cause harmful interference to radio or television reception, which can be determined by turning the equipment off and on, the user is encouraged to try to correct the interference by one or more of the following measures:

- Reorient or relocate the receiving antenna.
- Increase the separation between the equipment and receiver.
- Connect the equipment into an outlet on a circuit different from that to which the receiver is connected.
- Consult the dealer or an experienced radio/TV technician for help.

FCC RF Radiation Exposure Statement: The product comply with the FCC portable RF exposure limit set forth for uncontrolled environment and are safe for intended operation as described in this manual. The further RF exposure reduction can be achieved if the product can be kept as far as possible from the user body or set the device to lower output power if such function is available.