

# M6

## Motorcycle intercom



Humanized Design



New concept Structure



Durable working



Intelligently reduce noise

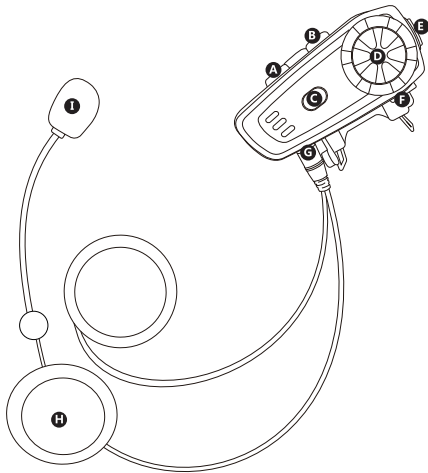


HD stereo Sound



Dedicated Communicator for rider

### Functional diagram



|                             |                             |                           |
|-----------------------------|-----------------------------|---------------------------|
| <b>A:Volume -/last song</b> | <b>B:Volume +/next song</b> | <b>C:Intercome button</b> |
| <b>D:Function/Answer</b>    | <b>E:USB charging port</b>  | <b>F:PTT input</b>        |
| <b>G:Audio output</b>       | <b>H:Speaker</b>            | <b>I : MIC</b>            |

### Feature Introduction

#### Action Tips

1. The new machine is recommended to be fully charged before using.  
(Red light is always on while charging)
2. Insert the headset into the audio output .
3. The USB charging cable into the USB port, the other end to the power supply, to charge the battery.

#### Turn ON/OFF

1. Turn ON: Click and hold the B and D button at the same time for 3s. Tip: power on and prompt the remaining charge.
2. Turn OFF:At staring state, holding down the B and D button for 3s to turn off.

#### Track switching and volume adjustment

1. Click the A button to play last song, and click the B button to play the next song.
2. Press and hold the A button to decrease the volume, and press and hold the B button to increase the volume.

#### Suspend music & call

1. Click the D button to play and stop the music.
2. When calling, click D to answer the phone. On the call, click D to end the call, holding down D to refuse to answer the phone.
3. Answer automatically after calling lasted over 6 seconds.

#### Connect with a traditional walkie-talkie

Insert the supplied K cable into the traditional walkie-talkie and the PTT headphone hole on device, then you can connect with the 2.4g walkie-talkie at electricity or no power.

#### Turn on and turn off FM

1. Holding down A and B button for 3 seconds to switch to FM mode. Voice tip "FM mode".
2. The button for adjusting volume works as a searching button for frequency while in FM state.
3. Turn off the FM mode: Click and hold A and B button for 3 seconds in the FM mode to switch back to the Bluetooth mode. The voice tips "Bluetooth mode"

#### Voice priority

telephone - intercom - play music

## Feature Introduction

### Searching bluetooth

**Passive searching mode:** Holding down D button for 6 seconds at power on state. Then broadcast: Your device is connected.

**Active searching mode:** Holding down the C button for 6 seconds at power on state. Then broadcast: Your device connected.

### Pairing with mobile phone

Turn on the passive searching mode at power on state, then turn on the bluetooth on mobile. Searching "K3", click to connect. Mobile will show connected successfully when listen "Bi" sound. And the headset flashes at the moment, promoting the voice "Connected".

### Realize front and rear seat pairing connection

**Caution:** There are two searching modes for headphones. It must be two relationships, passive searching and active searching

The front seat headset starts the active searching and the rear seat headset must be passive searching mode. At this time, the front seat headset's blue light flashes rapidly and rear seat headset's red and blue light flashed rapidly. Voice tips: Your device is connected, means connect successfully.

**Disconnected manually for front and rear seats:** Click the intercom button to prompt the voice: Your device is disconnected, and end of intercom.

**Mobile is connected back to front and rear seats:** Click the intercom button to connect, voice tips "Connected", means connect successfully.

### With traditional walkie-talkie connection function

1. The host reserve a link interface with the traditional walkie-talkie, which can expand more people and further.

### Power on connection

Once the pairing is completed in a subsequent use, the connection can be automatically connected as long as power on. And the terminal of the earphone will prompt connecting.

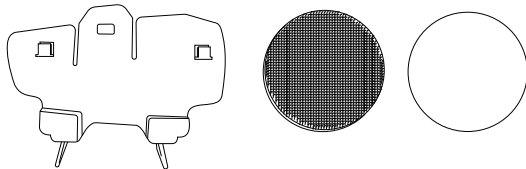
### Restore factory settings

Holding down the C and D button for 3s until red and blue light flash alternately (Power on again after restore the factory settings)

## Installation method

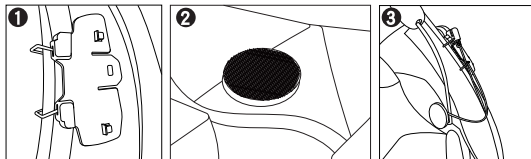
### Installation mode one:

Accessories as below: Back splint, Round sticker



### Installation sequence

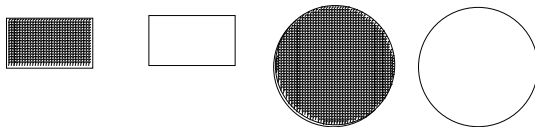
1. Clip the back splint to the left side of helmet as Figure 1 below, to the top until fully fixed.
2. Attach the sticker on two inside of the helmet near the ear position.
3. Tighten the earphone on sticker directly, then install the intercom on back splint. It is long for the earphone cable to plug into the helmet. So don't try to fold it.



## Installation method

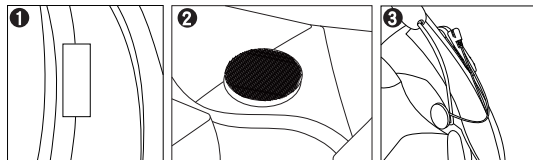
### Installation mode two:

Accessories as below: Square magic sticker and round magic sticker.



### Installation sequence

1. Stick the sponge on the left of helmet like figure 1.
2. Attach the sticker on two inside of the helmet near the ear position.
3. Tighten the earphone on sticker directly. Install the sticker on the back of intercom, then stick on the helmet. It is a little long for the earphone cable to plug inside the helmet. So don't try to fold it.



#### FCC WARNING STATEMENT

Changes or modifications not expressly approved by the party responsible for compliance could void the user's authority to operate the equipment. This equipment has been tested and found to comply with the limits for a Class B digital device, pursuant to Part 15 of the FCC Rules. These limits are designed to provide reasonable protection against harmful interference in a residential installation. This equipment generates uses and can radiate radio frequency energy and, if not installed and used in accordance with the instructions, may cause harmful interference to radio communications. However, there is no guarantee that interference will not occur in a particular installation. If this equipment does cause harmful interference to radio or television reception, which can be determined by turning the equipment **off** and on, the user is encouraged to try to correct the interference by one or more of the following measures:

- - Reorient or relocate the receiving antenna.
- - Increase the separation between the equipment and receiver.
- - Connect the equipment into an outlet on a circuit **different** from that to which the receiver is connected.
- - Consult the dealer or an experienced radio/TV technician for help.

This device complies with Part 15 of the FCC Rules.

Operation is subject to the following two conditions:

- (1) This device may not cause harmful interference, and
- (2) This device must accept any interference received, including interference that may cause undesired operation.