

Operational description

The “TE-2G4-RFZB_telgo100m” module is a ZigBee RF transceiver. It would typically be used in a fixed system as part of a smart-relay circuit in industrial facilities.

Note: prior to setting a mode, the channel of operation can be set.

Receive mode (Rx mode): Receive packets from a compatible ZigBee transceiver

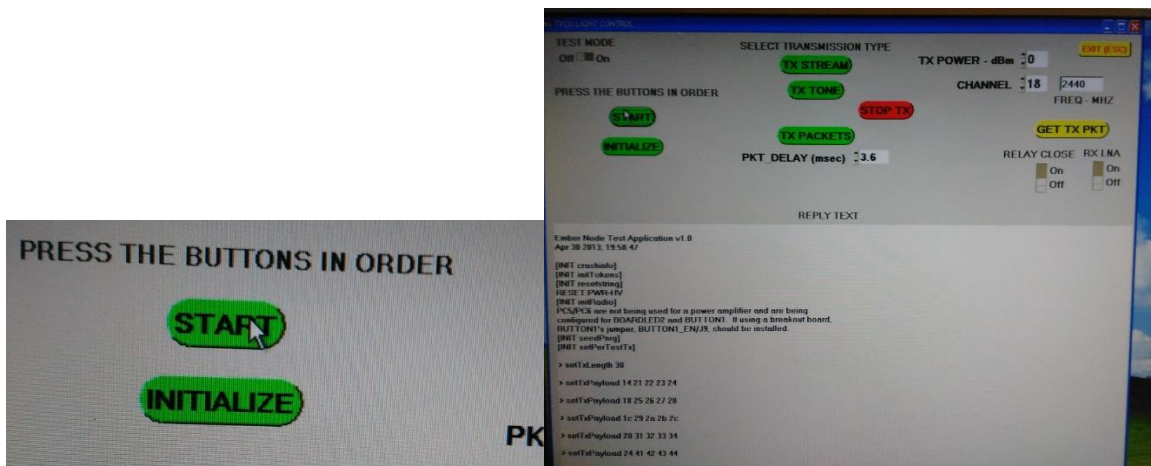
Transmit mode (TxPackets mode): Transmits a designated set of packets.

Additional transmit mode (not under normal operation) include:

1. TxTone mode: Transmitting a continuous carrier frequency.
2. TxStream mode: Transmitting a continuous stream of random symbols.

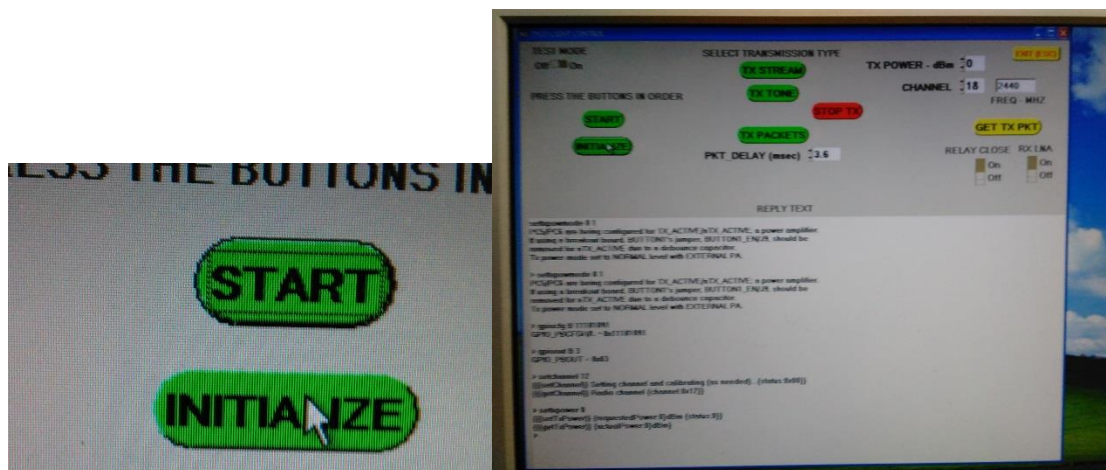
1. Click “START”

Feedback will be provided in the message window.



2. Click “INITIALIZE”

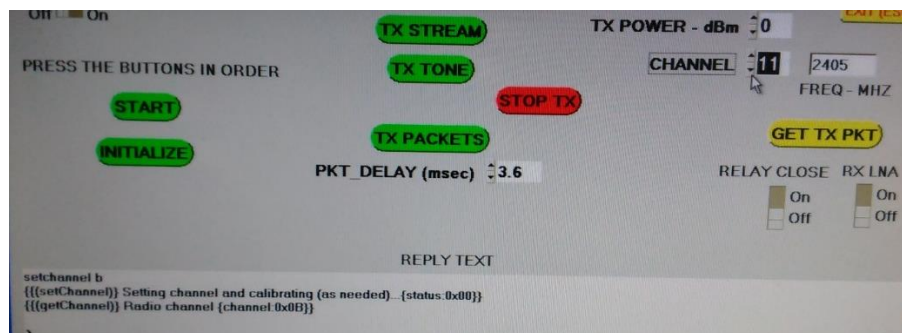
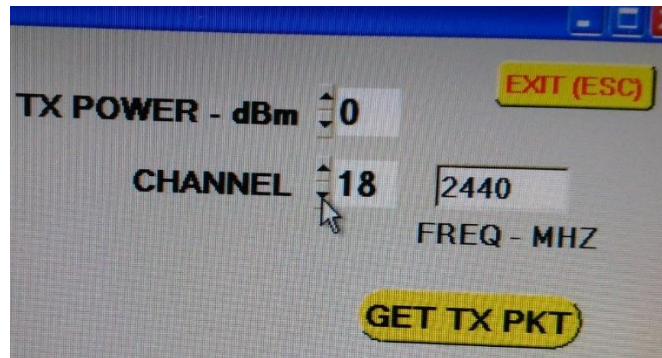
Feedback will be provided in the message window.



3. Set CHANNEL by using UP or DOWN arrow. Low channel = 11.

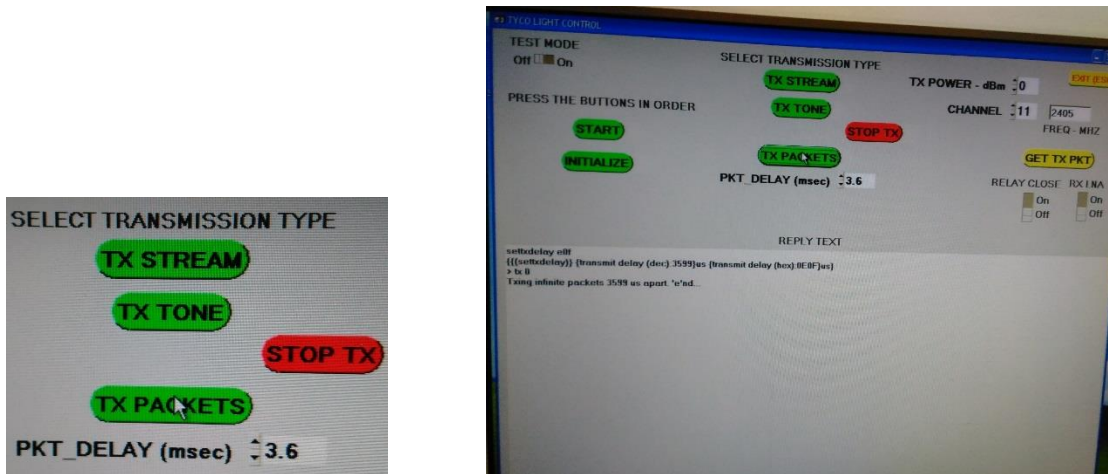
Mid Channel =18. High Channel =25.

Feedback will be provided in the message window each time.



4. For NORMAL operation transmission mode, click on “TX PACKETS”.

Feedback will be provided in the message window.

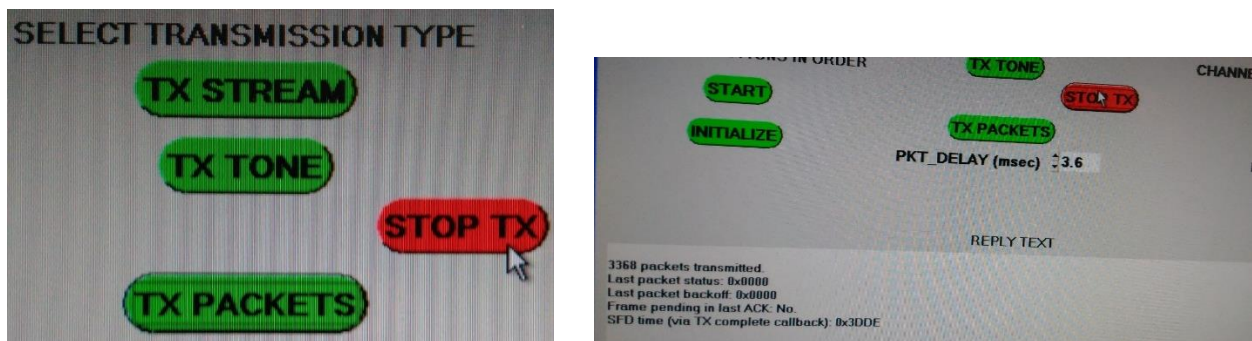


8b. For CONTINUOUS TX STREAM click on “TX STREAM”.

NOTE: TX STREAM is only a test mode and will not be used for normal transmission.

5. To TURN OFF, click on “STOP”

Feedback will be provided in the message window.



6. Click “EXIT” to close the application.