

Installation Manual

A host device must be designed to have the following metal pad design to be compatible with this product (TE-2G4-RFZB_telgo100m). Each pad must be 0.25 mm in diameter and have gold surface finish.

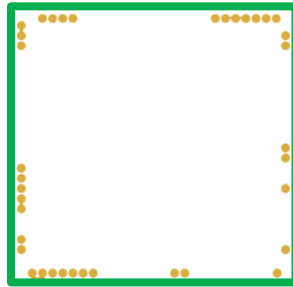
The host must also provide a regulated voltage of 3.3V, capable of supplying current up to 250mA for as long as the device would be in operation.

Additionally, the host also needs to provide data inputs through serial interface such as Serial Wire/JTAG, SPI/UART.

Detailed drawings of the recommended design will be provided with the product.

The method of attaching the product to the board will be using standard reflow process using flip-chip bonding tools, however the use of such tools is not mandatory.

The host must also have ground tracks to install an EMI shield if necessary. Recommended design of such a shield will be provided.



NOTE: This product (TE-2G4-RFZB_telgo100m) is approved for use only in a commercial, industrial or business environment, exclusive of a device which is marketed for use by the general public or is intended to be used in the home.