



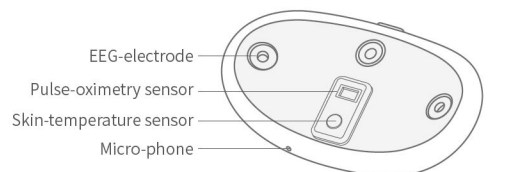
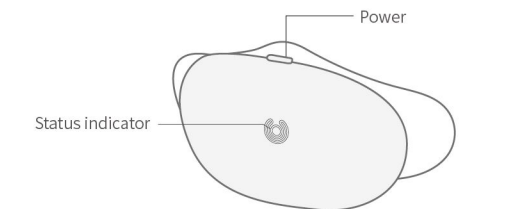
UMindSleep Mini EEG Sleep Monitor S1

USER GUIDELINE

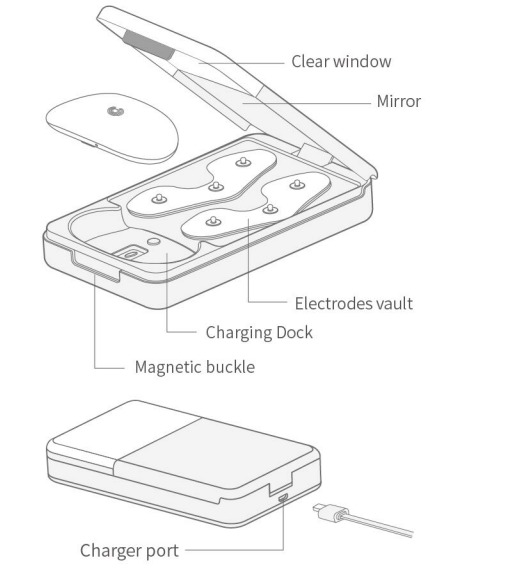
Product Information

Item	Quantity	Features
UMindSleep	1	68*38*14mm(length*width*thickness) Actual thickness: 9.5mm
Charger box	1	140*82*25mm(length*width*height)
Electrodes	16	16 pieces, 85mm in length
USB charger	1	Micro USB
Product manual	1	UMindSleep forehead-EEG sleep monitor Manual
Warranty card	1	Customer service in the post-sale

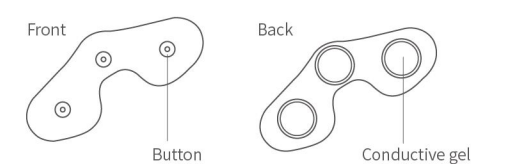
Product



Charger box



Electrodes



Product properties

The product monitors the following properties:

Sleep staging	Wake, Light sleep, Deep sleep, REM
Heart rate	Beats per minute
Oxygen saturation	Peripheral capillary blood oxygen saturation Spo2
Forehead temperature	Skin temperature in forehead
Body position	Positions during sleep: left, right, supine, prone, stand
Snore	Snore during sleep: snore recordings, snore loudness

*Specific features update with smart phone software App. Please update the version of its corresponding software and note the related features.

Wear the device

01

Please deeply clean the face, avoid any makeup, dirt or oil from its adhesion.



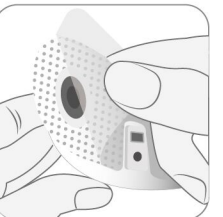
02

Take an electrode from the vault and cling the device with the electrode.



03

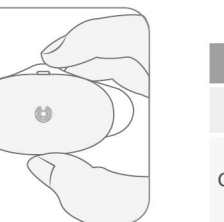
Tear the paper behind the electrode and expose the gel.



Wear the device

04

Push the button in the upper side of UMindSleep, the device is on when the charger indicator turns blue.



05

The device should be applied in the center of forehead with the button placed upwards (please avoid sticking hair).



Product Instruction

1. Indication Lights

The device is on while charging.

Device Indication Lights			
Power Status	Battery Status	Bluetooth Status	Indication Lights Status
Charging	<100%	Any	Pulsing red light
	100%		Constant Blue light
On Not charging	>5%	Connected	Pulsing blue light
		Not connected	Constant blue light
Off Not charging	0%~5%	Any	Rapid double-blinking red light
	Any		Off

2. Charging

- Connect the charger box with an adapter (self-provision) by Micro USB.
- The device is stationed while kept in the charger box. Pulsing red light indicates charging status; Constant blue light indicates full battery status.
- Low battery warning. Rapid double-blinking red light indicates battery of less than 5%.

3. Power on/off

- In the status of Power off, short press the power button, constant blue light indicates the device in power on and ready for connection.
- Long press the power button within more than 2 seconds, triple-blinking of the light indicates power off.

4. Connection of cell-phone and device

- Switch on Bluetooth in the cell-phone.
- Follow the instructions in UMindSleep APP, select the corresponding Bluetooth code of the device in the device list page.
- Indication light turns into slow breathing if the device is successfully connected.

Recording instructions

During recording through UMindSleep App, the distance between cell-phone and human body influences the output of loudness of the recordings. Keep the cell-phone and human head with a distance of less than 1 meter and make sure the micro-phone is placed towards head in order to obtain more accurate snore and other data. Recording can be turned off in the App's settings.

Precautions

- Before sleep monitoring, please clean the forehead and stick the device on the forehead. Avoid high-power appliances, wires or any tiny appliances with alternating-current, in contact with skin;
- Please make sure of battery sufficiency, in case of recording interruption by insufficient battery of the device;
- Please clear the storage in smart phone, in case of recording interruption by the memory in smart phone of less than 100M;
- Please keep smart phone charging during sleep monitoring, in case of recording interruption by insufficient battery of cell-phone;
- Please avoid any coverage to the head from the device falling off the forehead;

Common Troubleshooting

1. Fail to start

- Please make sure of pressing power button in correct position and hold for 1 second.
- Short press the power button, if instruction light is not turned on, please try again after charging the device.

2. Bluetooth connection error

- Please make sure Bluetooth of the smart phone is on.
- Follow the instructions in UMindSleep APP, select the corresponding Bluetooth code of the device in the device list page.
- If the device is not found, short press power button in the device and make sure the device is on.
- Click on the Refresh button in the device list to re-search the device.

3. Bad signal quality

- Clean the forehead. Apply the electrode on the forehead and make sure each electrode with corresponding buckle.

4. Environmental noise

- Please avoid high-power appliances, wires or any tiny appliances with alternating-current, in contact with skin.
- (For more information, please visit the official website or Help service in the smart phone App.)

Safe Use instructions

- Stop using the device if any allergic reaction occurs.
- Avoid access to water while using, in case of the device falling into water.
- Please use the device with an environmental temperature of 0°C~35°C and keep the device and accessories with an environmental temperature of -20°C~+45°C. Problems of the device and the stickiness of the electrode can occur in the environmental temperature of too high or too low.
- Please avoid exposing the device around high-temperature or heating devices such as sun-light, heater, micro-wave oven or water heater. Explosion can occur if the battery is over-heated.
- Please keep the power outlet closed to the device and reachable while charging.
- Please disconnect Micro USB and the device, and plug out the power plug from power outlet while finishing charging or not charging.
- Please keep the device away from children's reach, in case of ingestion.
- Please do not disassemble or amend the device on your own, and contact our post-sale customer service.
- Please obey the local trash disposal rules. The device cannot be categorized as garbage.

Hazards and contents

Main component	Hazardous substances					
	Pb	Hg	Cd	Cr(VI)	PBB	PBDE
Device	○	○	○	○	○	○
Charger box	○	○	○	○	○	○
Electrode	○	○	○	○	○	○
Battery	○	○	○	○	○	○
Wire	○	○	○	○	○	○

The table is amended based on SJ/T 11364
○: references to which in this standard mean that the contents of hazardous substances are under the limit requirements set forth in GB/T 26572.
×: references to which in this standard mean that the contents of hazardous substances exceed the limit requirements set forth in GB/T 26572, yet RoHS exemptions are granted when there are alternative for the substances.

15 Environment friendly requirements

The number inside the logo indicates the year of Environment Friendly Use Period (EFUP) of 15 years under normal use. Some departments can also include the Environment Friendly Use logo, its use period is referred to the number inside the logo. Please refer to the actual sales configurations, different models might not include other units except for the main component.

NOTE:

This equipment has been tested and found to comply with the limits for a Class B digital device, pursuant to part 15 of the FCC Rules. These limits are designed to provide reasonable protection against harmful interference in a residential installation. This equipment generates uses and can radiate radio frequency energy and, if not installed and used in accordance with the instructions, may cause harmful interference to radio communications. However, there is no guarantee that interference will not occur in a particular installation. If this equipment does cause harmful interference to radio or television reception, which can be determined by turning the equipment off and on, the user is encouraged to try to correct the interference by one or more of the following measures:
- Reorient or relocate the receiving antenna.
- Increase the separation between the equipment and receiver.
- Connect the equipment into an outlet on a circuit different from that to which the receiver is connected.
- Consult the dealer or an experienced radio/TV technician for help
Changes or modifications not expressly approved by the party responsible for compliance could void the user's authority to operate the equipment.

NOTE:

This device complies with Part 15 of the FCC Rules. Operation is subject to the following two conditions:
(1) this device may not cause harmful interference, and
(2) this device must accept any interference received, including interference that may cause undesired operation.

NOTE:

This device complies with Industry Canada licence-exempt RSS standard(s). Operation is subject to the following two conditions: (1) this device may not cause interference, and (2) this device must accept any interference received, including interference that may cause undesired operation of the device.
Le présent appareil est conforme aux CNR d'Industrie Canada applicables aux appareils radio exempts de licence. L'exploitation est autorisée aux deux conditions suivantes: (1) l'appareil ne doit pas produire de brouillage, et (2) l'utilisateur de l'appareil doit accepter tout brouillage radioélectrique subi, même si le brouillage est susceptible d'en compromettre le fonctionnement.

NOTE:

This device complies with Part 15 of the FCC Rules. Operation is subject to the following two conditions:
(1) this device may not cause harmful interference, and
(2) this device must accept any interference received, including interference that may cause undesired operation.

NOTE:

This device complies with Part 15 of the FCC Rules. Operation is subject to the following two conditions:
(1) this device may not cause harmful interference, and
(2) this device must accept any interference received, including interference that may cause undesired operation.

