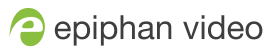


WEBCASTER **X2**

Quick start guide



™ and © 2017 Epiphan Systems Inc.

1 Product Overview



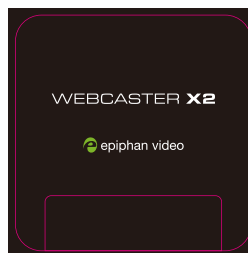
HDMI cable



RJ45 cable

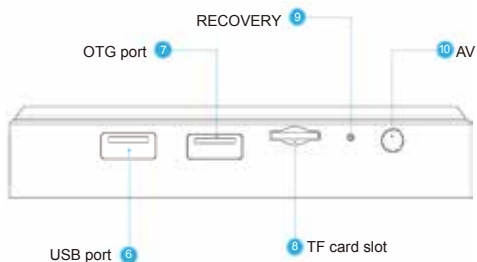
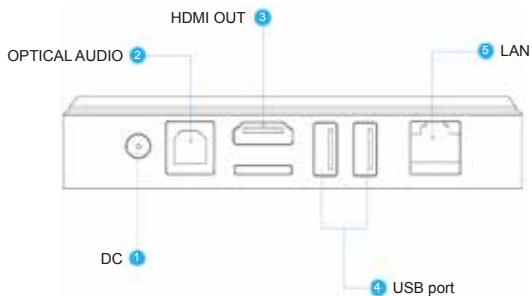


Charger



Android TV Box

2 Installation Introduction



3 Installation

① Connect to TV

With HDMI High-definition output and AV Composite Video Output function, you can enjoy visual pleasure simply by connecting epiphan Box and TV Set with HDMI High-definition video cable.

② Start up

After the Box Power on, please press the Box switch then Box system begins to start.

③ Networking

epiphan Box Supports both the Wire and Wireless Network Access.

1.Wire Access : Connect the Router and epiphan Box by one networking cable via LAN port (the networking cable is required to be purchased individually)

2.Wireless Access : Go to the “Network Setting” of epiphan Box, select the available Wi-Fi hot point.

Completion !

Now please freely enjoy the Audio Visual experience of epiphan Android TV Box.

4 Function Introduction

① Media Center

epiphan Box media center function includes the video player and picture browser. epiphan Box Supports SD card / TF card / USB Disk Drive / Mobile Phone / PC as well as video picture file playback from other networking devices. The Box Supports all formats high definition video, music and picture like m2ts / flac / jpeg

② DLNA Multimedia Sharing

epiphan Box Supports DLNA multimedia sharing. Just simply make your device like mobile phone / tablet PC and epiphan Box in the same local area network , now you can share the video / music from your phone / tablet PC onto the big TV screen via the epiphan Box.

Warm Reminding: Your mobile device Android Version should be over version 4.0 at least , or it is installed the DLNA client already.

③ Bluetooth

epiphan Box Supports Bluetooth function.

Turn on your house Bluetooth device like Bluetooth Speaker / Bluetooth headset/ Bluetooth Handle / Mobile phone , then open epiphan Box Bluetooth function.

Box

will automatically search the signal of the

Bluetooth function. Box will automaticall search the signal of Bluetooth device finally connect it successfully.

Now You can enjoy the life convenience freely brought by bluetooth function!

④ Audio Optical Fiber

epiphan Box has one Audio Optical Fiber port . You simply connect house loud-speaker

and epiphan Box by Audio Optical cable via the Audio Optical Fiber port.

Please sufficiently enjoy the pure and Hi-Fi hearing please

(The Audio Optical cable is required to be purchased individually)

5 Optional Accessories



AV Composite Video Cable



2.4G Wireless Air Mouse



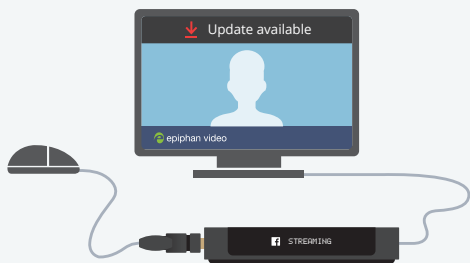
2.4G Wireless Mini Keyboard



Android Wireless Game Handle



High-definition Webcam, USB Camera



Update the Firmware

Ensure you have access to all the latest features and improvements. Update your Epiphan **Webcaster X2** to the latest firmware now!

- 1** Plug in the power and Ethernet cables.
- 2** Connect a display to the **HDMI OUT** port and a mouse to a **USB** port.
- 3** Press the **multi-function power** button once to turn on the **Webcaster X2**.
- 4** Click the **Update available*** notice in the top bar.
- 5** Wait for the firmware update to download.
- 6** Click **Restart and install**. **Webcaster X2** automatically restarts after the firmware is updated.

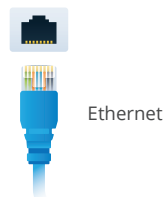
*Must be connected to the Internet to access firmware updates.
If your Webcaster X2 is already running the latest firmware, no update available message appears.

How to use your **Webcaster X2** to stream to YouTube and Facebook Live

- 1 Connect your HDMI™ camera to the **HDMI IN** port of Epiphan **Webcaster X2** using an HDMI cable.



- 2 Using an Ethernet cable, connect **Webcaster X2** to a network that allows access to YouTube and Facebook.



- 3 Connect the power cable to the back of **Webcaster X2** to turn on the device.



4

Double-click the **multi-function power** button to choose between **YouTube** and **Facebook Live**. The logo and pairing code appears on the **Webcaster X2** display.



5

Using a browser on your computer or mobile device, enter the pairing code in **YouTube** or **Facebook Live** and share your profile information.



For **YouTube**, go to **<https://www.google.com/device>** and log in.

Enter the pairing code when prompted, then click **Next** and **Allow**.

NEXT

OR

For **Facebook Live**, go to **<https://www.facebook.com/device>** and log in.

Enter the pairing code when prompted, then click **Continue** and **Okay**.

Continue

Tip: To manage your event:

For **YouTube**, manage your live event at https://www.youtube.com/live_dashboard.

OR

For **Facebook Live** go to your Facebook page to set the title and manage your live event.

6

Press the **multi-function power** button once on **Webcaster X2** to start the live stream. The light blinks when **Webcaster X2** is streaming content.



Tip: The **Webcaster X2's** display shows you how long you've been streaming.

7

Press the **multi-function power** button once again to stop streaming. When the stream ends, the content is processed as a video for replay.



8

To turn off **Webcaster X2**, long press the **multi-function power button** or disconnect the power cable from the device.

FCC STATEMENT :

This device complies with Part 15 of the FCC Rules. Operation is subject to the following two conditions:

- (1) This device may not cause harmful interference, and
- (2) This device must accept any interference received, including interference that may cause undesired operation.

Warning: Changes or modifications not expressly approved by the party responsible for compliance could void the user's authority to operate the equipment.

NOTE: This equipment has been tested and found to comply with the limits for a Class B digital device, pursuant to Part 15 of the FCC Rules. These limits are designed to provide reasonable protection against harmful interference in a residential installation. This equipment generates uses and can radiate radio frequency energy and, if not installed and used in accordance with the instructions, may cause harmful interference to radio communications. However, there is no guarantee that interference will not occur in a particular installation. If this equipment does cause harmful interference to radio or television reception, which can be determined by turning the equipment off and on, the user is encouraged to try to correct the interference by one or more of the following measures:

- Reorient or relocate the receiving antenna.
- Increase the separation between the equipment and receiver.
- Connect the equipment into an outlet on a circuit different from that to which the receiver is connected.
- Consult the dealer or an experienced radio/TV technician for help.

FCC Radiation Exposure Statement:

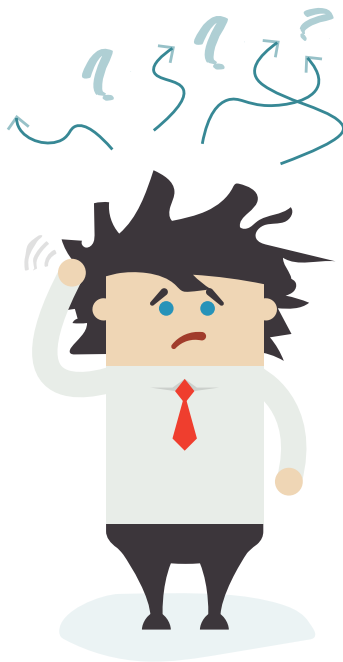
This equipment complies with FCC radiation exposure limits set forth for an uncontrolled environment. This equipment should be installed and operated with minimum distance 20cm between the radiator & your body.

For all tech specs and documentation, including instructions on how to configure your **Webcaster X2** with a keyboard, mouse and monitor, visit epiphan.com/webcaster-x2.

Wait! Need some help?

If you need help setting up your newly purchased Epiphan **Webcaster X2™** or the device doesn't appear to be working correctly, do not return the product.

Please contact our support directly at support@epiphan.com.



Register your **Webcaster X2** for
product updates at **[epiphan.com/register](https://www.epiphan.com/register)**

™ and © 2017 Epiphan Systems Inc. All Rights Reserved. Epiphan, Epiphan Video, Epiphan Systems, Epiphan Systems Inc., its products names and logos are trademarks or registered trademarks of Epiphan Systems Inc. All other company and product names and logos may be trademarks or registered trademarks of their respective owners in certain countries. Product specifications are subject to change without notice.

Your purchase and/or use of this product are subject to Epiphan's limited warranty, license agreements, Terms and Conditions of Quotation or Sale, and additional Webcaster X2 license terms which be found at **[epiphan.com/terms](https://www.epiphan.com/terms)** and **[epiphan.com/wcx2/license](https://www.epiphan.com/wcx2/license)**. Epiphan's warranty and return policy are available at **[epiphan.com/warranty](https://www.epiphan.com/warranty)**.

Use of this product is also subject to Facebook and Google's terms and conditions.

UG119-1