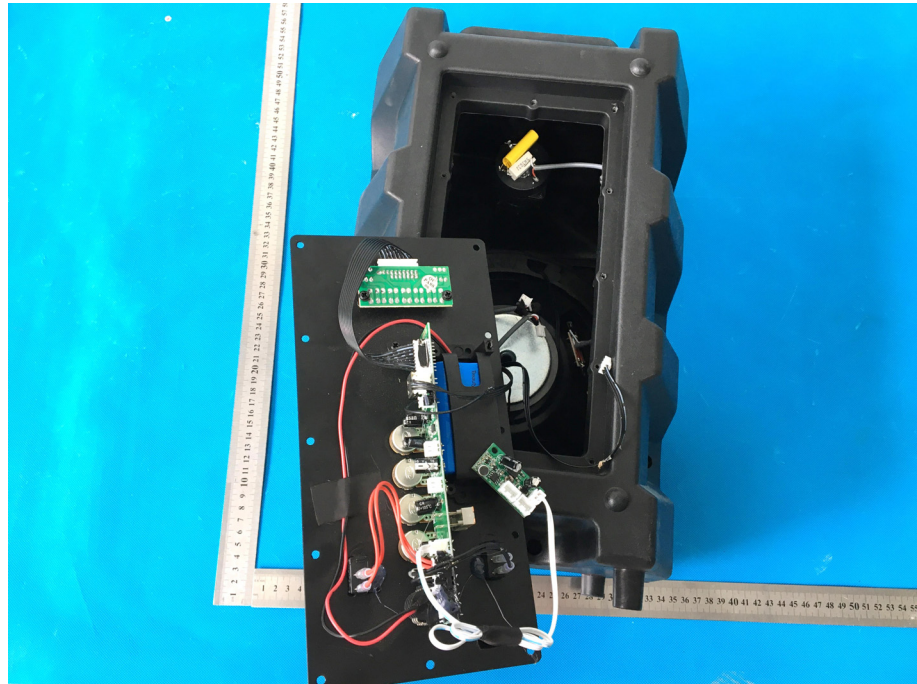
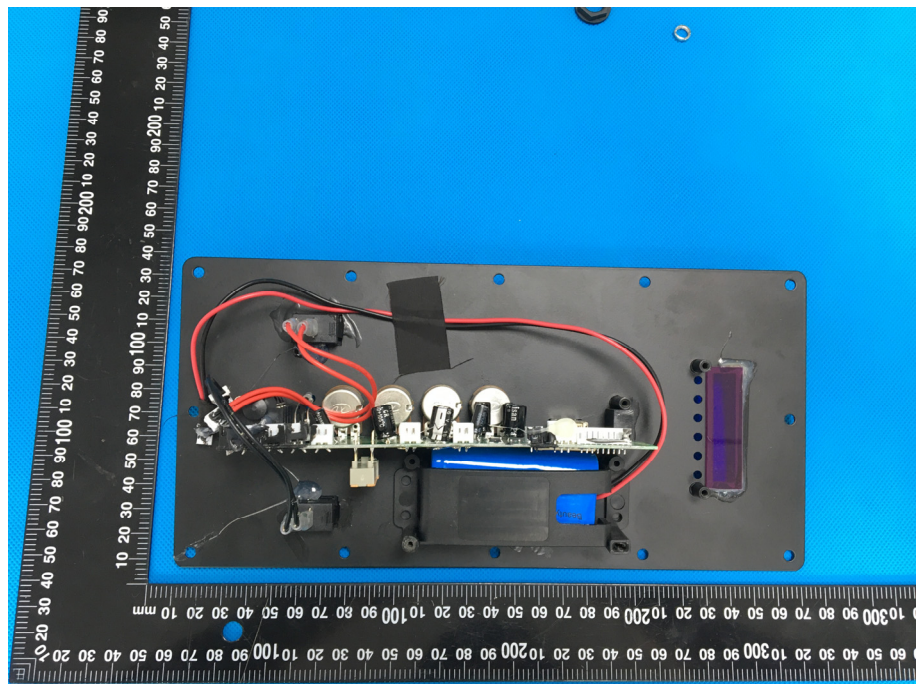


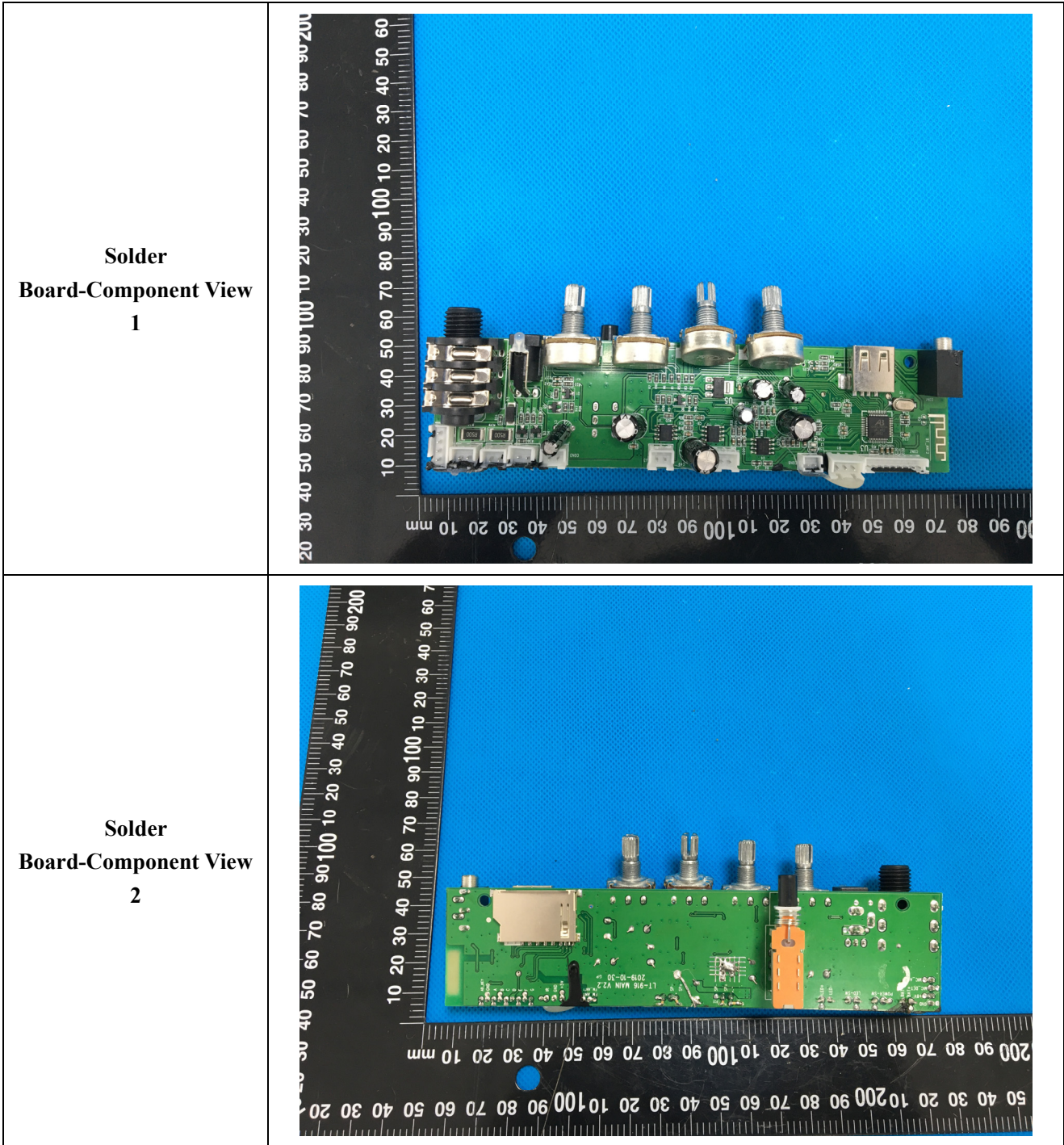
EXHIBIT 3 - EUT INTERNAL PHOTOGRAPHS

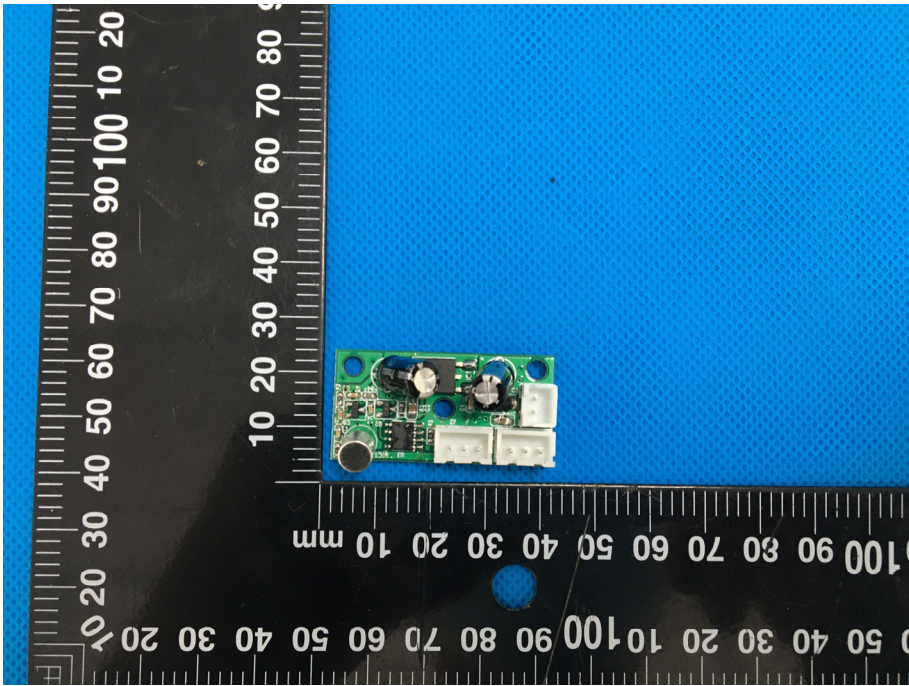
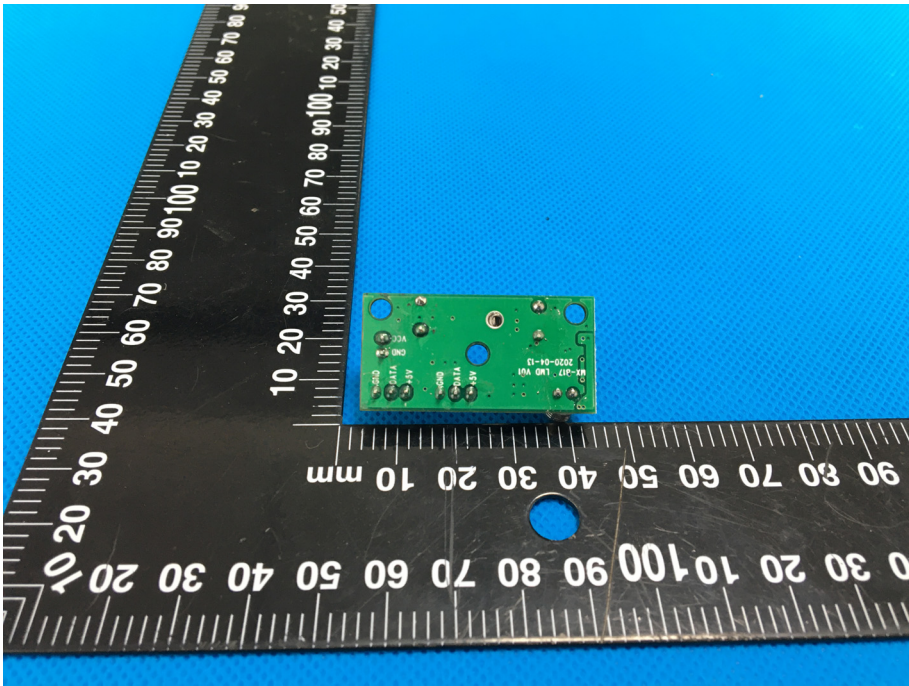
**EUT Housing and Board
View 1**

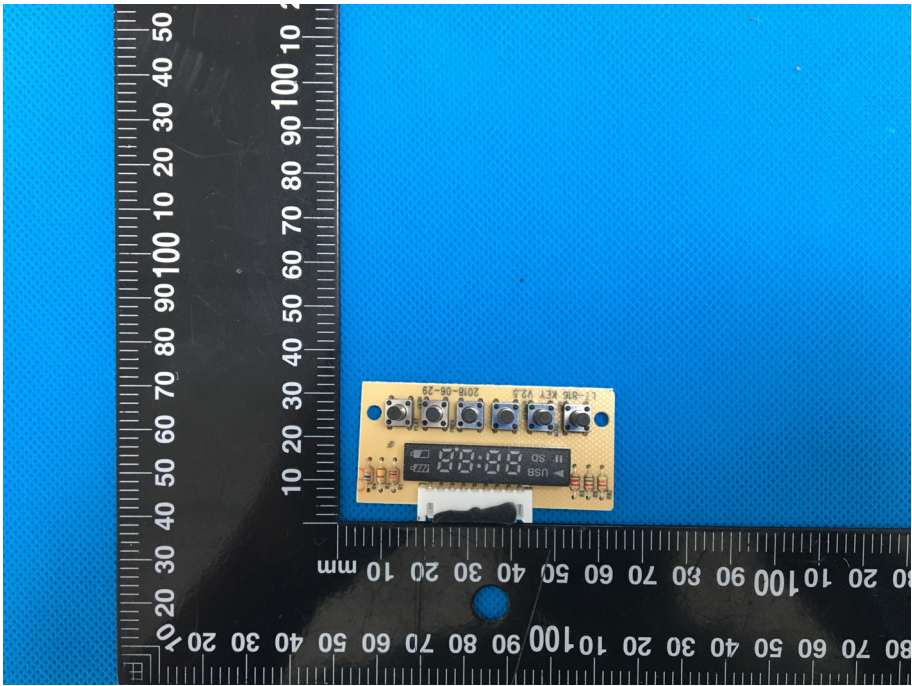
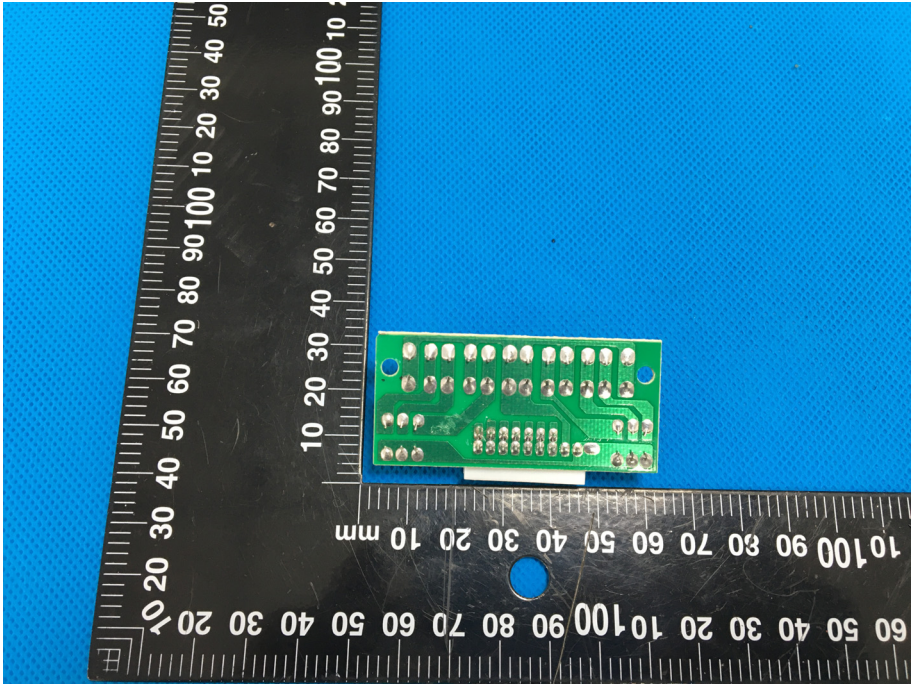


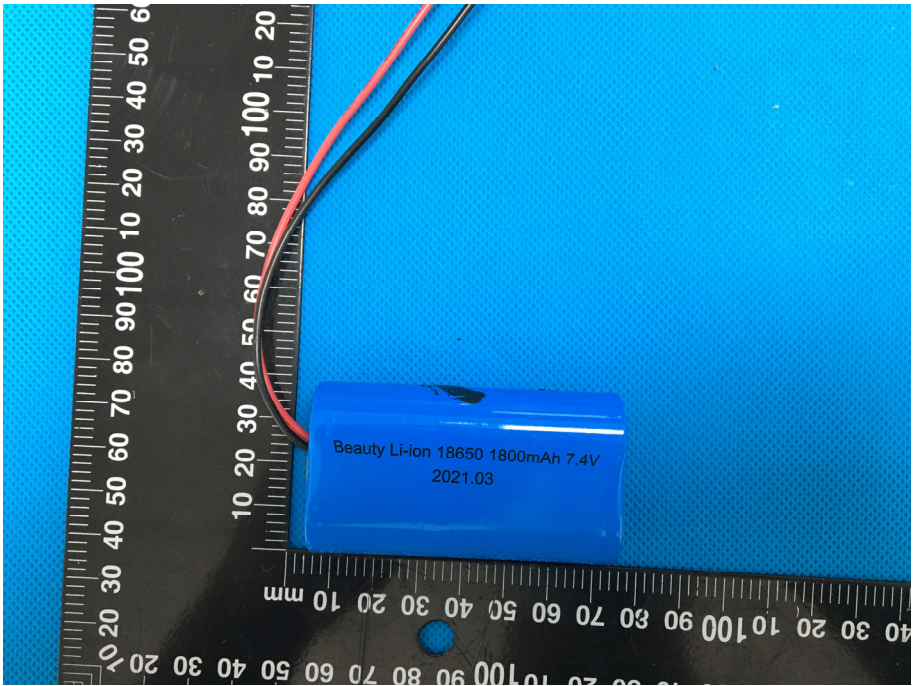
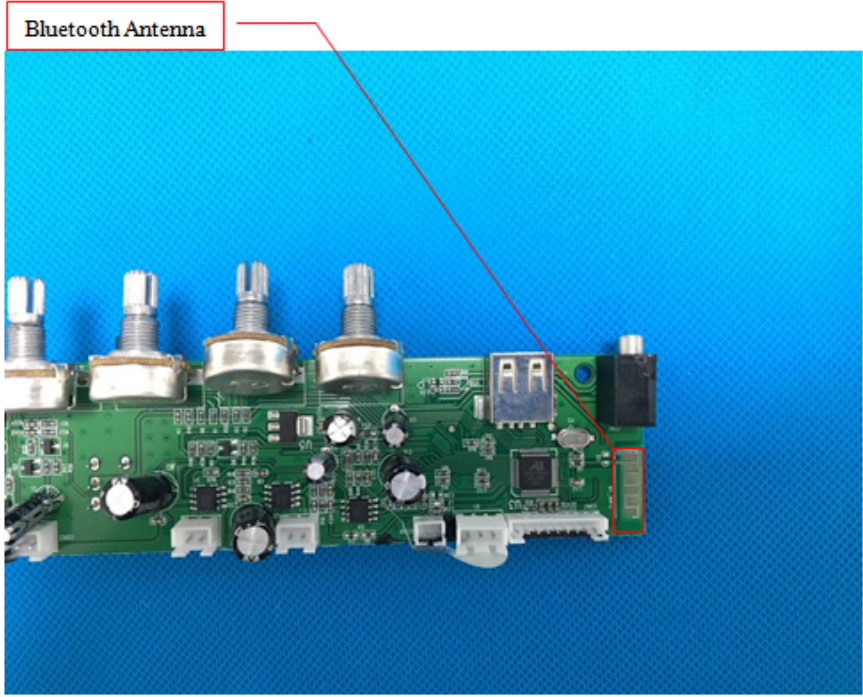
**EUT Housing and Board
View 2**





<p style="text-align: center;">Solder Board-Component View 3</p>	 A photograph showing a small green printed circuit board (PCB) component. The component is rectangular and features several electronic components, including two electrolytic capacitors, a resistor, and a small integrated circuit. It has two white plastic connectors on one side. The component is placed on a blue textured surface next to a black ruler with white markings in millimeters. The ruler shows the component is approximately 25 mm wide and 15 mm high.
<p style="text-align: center;">Solder Board-Component View 4</p>	 A photograph showing the reverse side of the same green PCB component. It features several surface-mount components, including resistors and capacitors. The component is placed on a blue textured surface next to a black ruler with white markings in millimeters. The ruler shows the component is approximately 25 mm wide and 15 mm high.

<p style="text-align: center;">Solder Board-Component View 5</p>	 <p>A photograph of a yellow printed circuit board (PCB) component, likely a USB-to-serial adapter, placed on a blue textured surface. The component features a USB connector on the left, a 7-segment display in the center, and several push buttons on the right. A black ruler with white markings is positioned vertically to the left of the component, showing measurements in millimeters. The ruler is oriented vertically, with the 0 mark at the top and the 100 mark at the bottom. The component is approximately 100 mm long and 20 mm wide.</p>
<p style="text-align: center;">Solder Board-Component View 6</p>	 <p>A photograph of a green PCB component, possibly a microcontroller board, placed on a blue textured surface. The component is rectangular and populated with numerous surface-mount components, including resistors and integrated circuits. A black ruler with white markings is positioned vertically to the left of the component, showing measurements in millimeters. The ruler is oriented vertically, with the 0 mark at the top and the 100 mark at the bottom. The component is approximately 100 mm long and 20 mm wide.</p>

<p style="text-align: center;">Solder Board-Component View 7</p>	 <p>A photograph showing a blue Li-ion battery with the text "Beauty Li-ion 18650 1800mAh 7.4V 2021.03" on its label. The battery is placed on a blue textured surface next to a black ruler with white markings. Two wires, one red and one black, are connected to the battery terminals.</p>
<p style="text-align: center;">Antenna View</p>	 <p>A photograph of a green printed circuit board (PCB) with various electronic components. A red box labeled "Bluetooth Antenna" is positioned at the top left, with a red line pointing to a small component on the right side of the board. Another red box is visible on the right side of the board, near the bottom edge.</p>