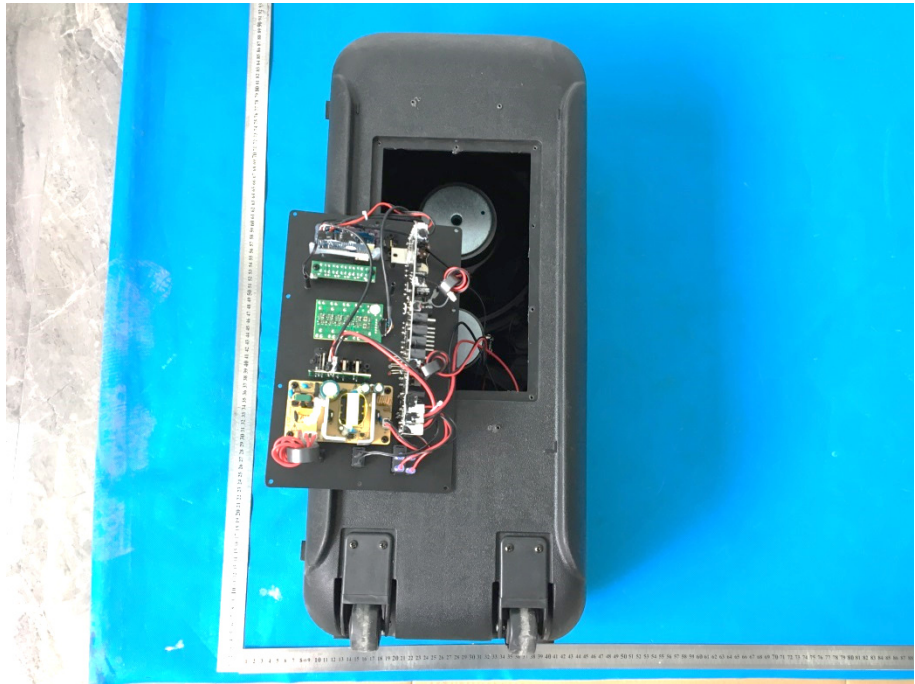


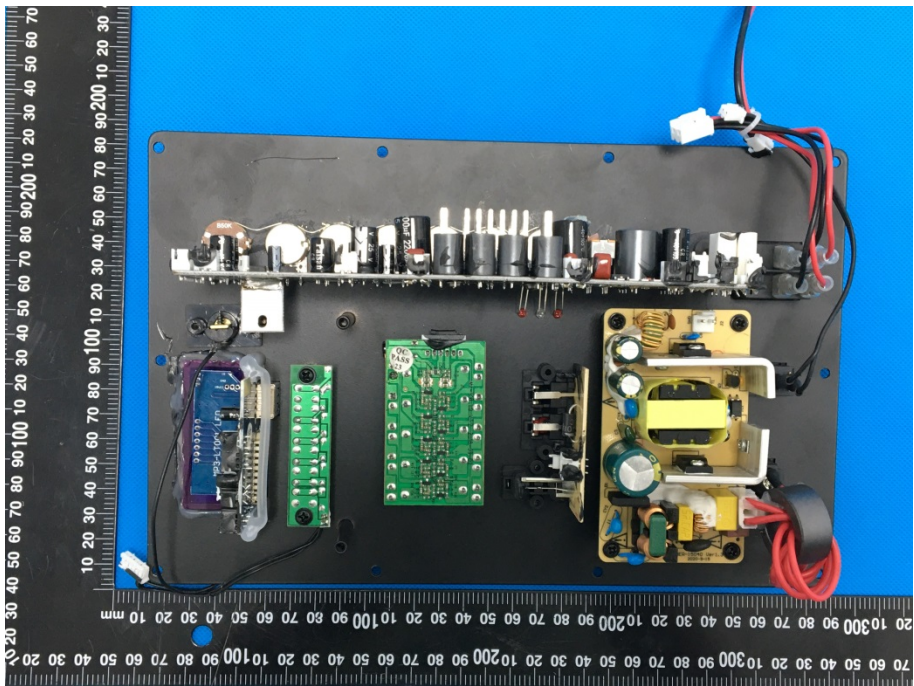
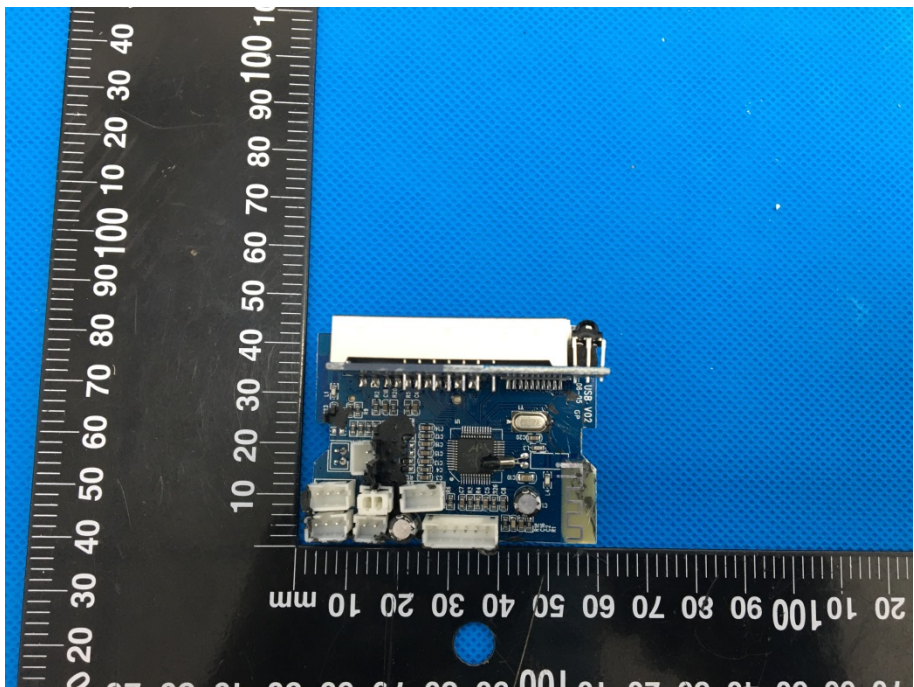
EXHIBIT 3 - EUT INTERNAL PHOTOGRAPHS

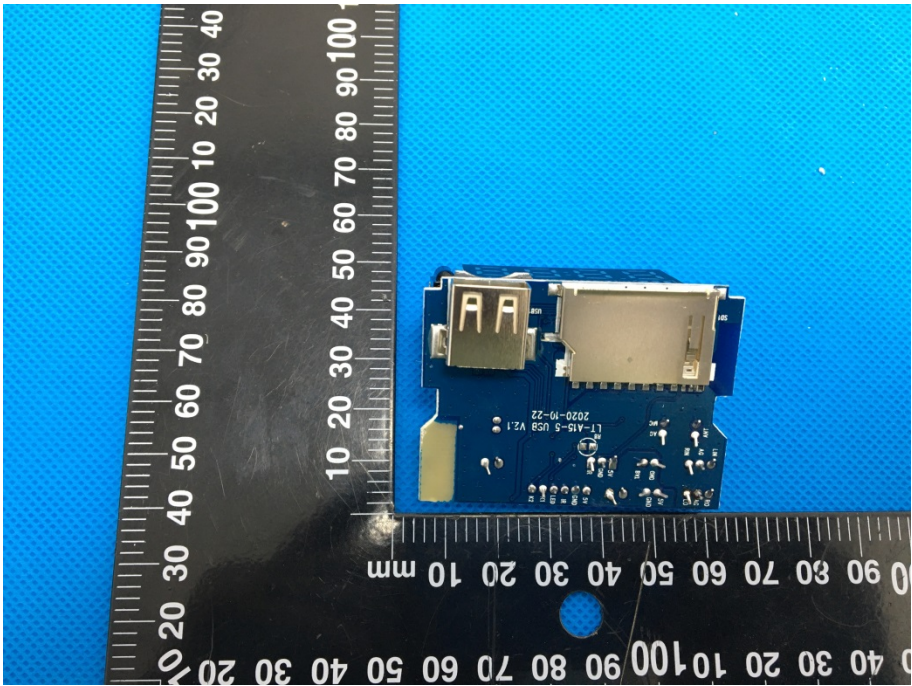
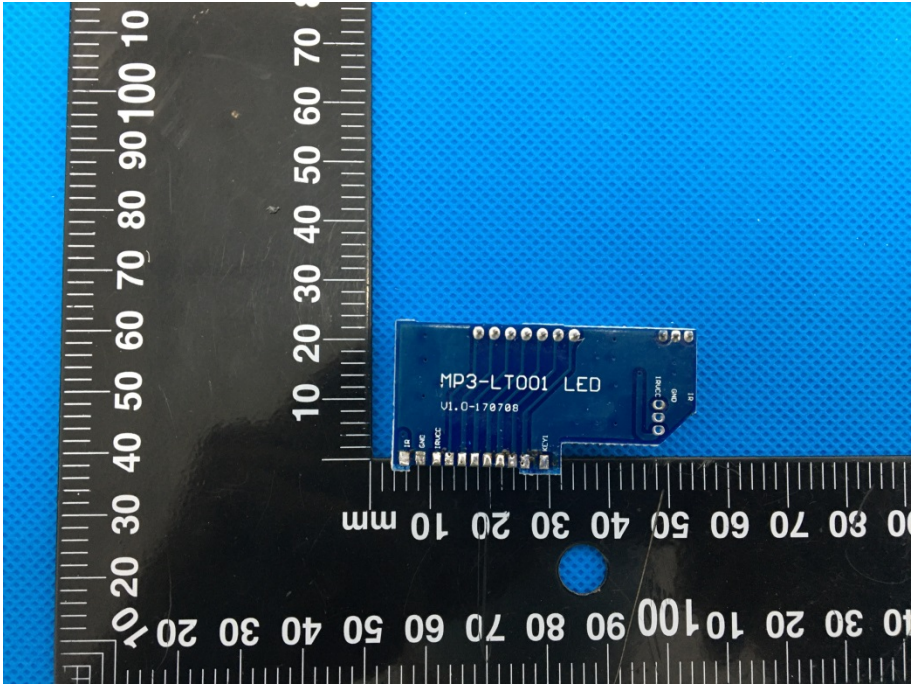
**EUT Housing and Board
View 1**

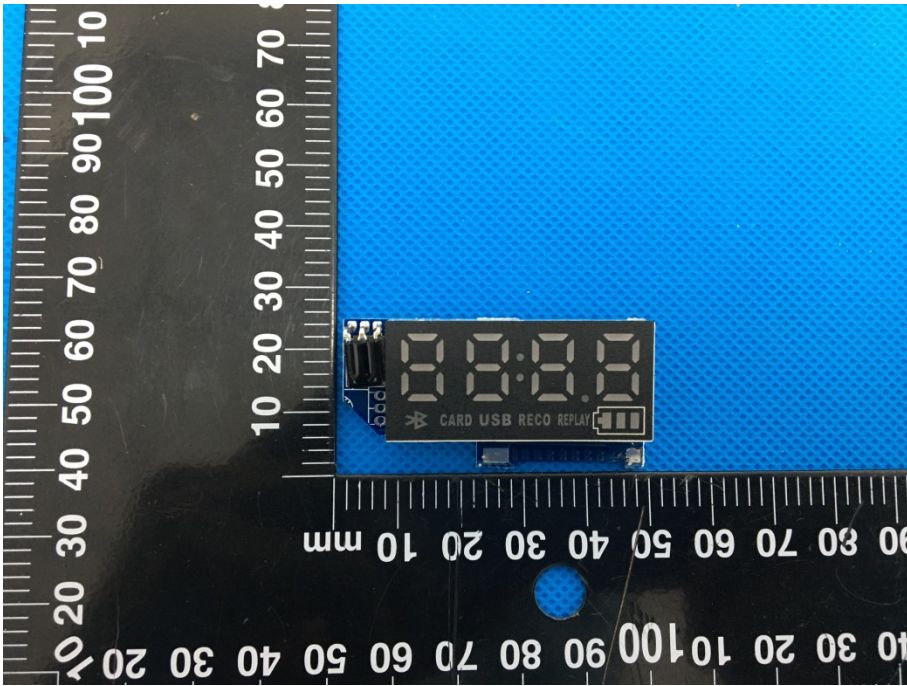
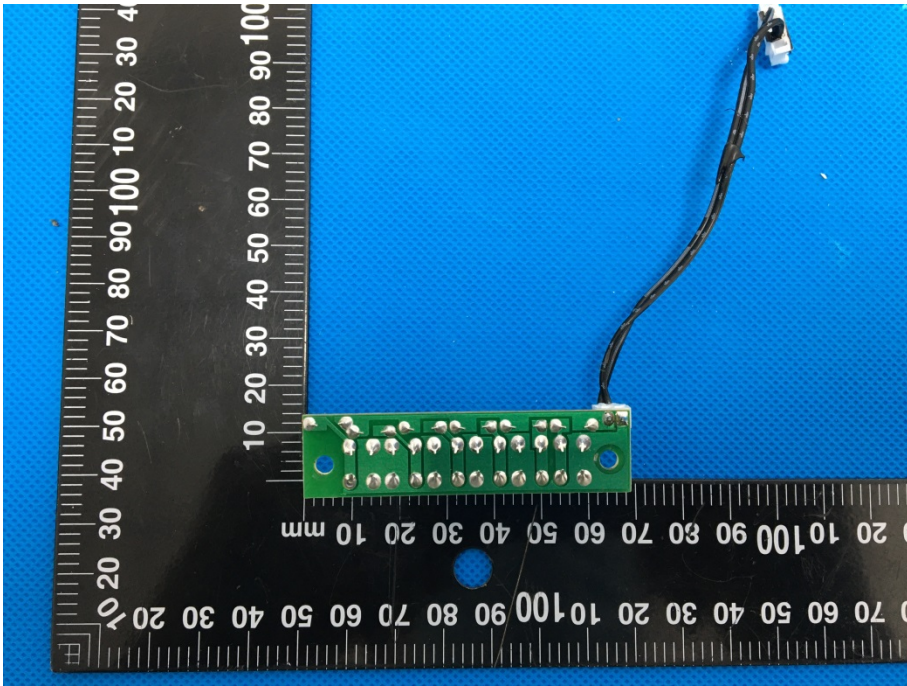


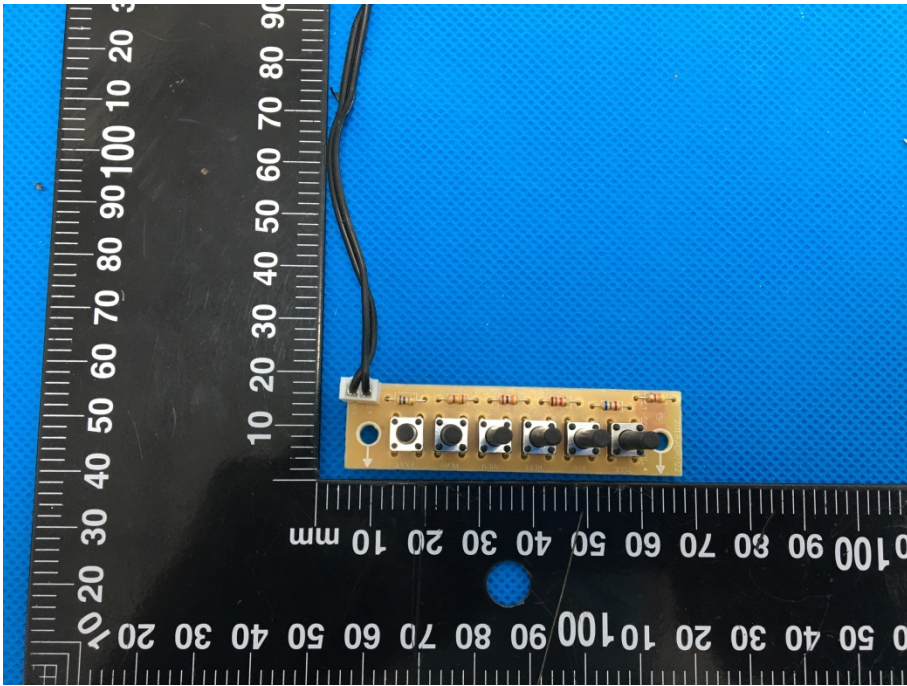
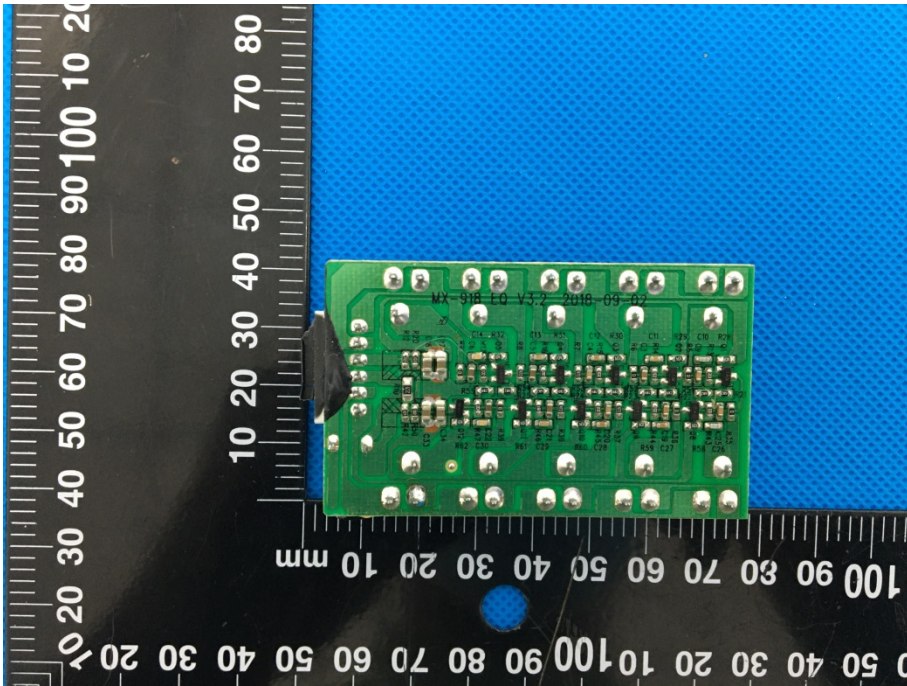
**EUT Housing and Board
View 2**

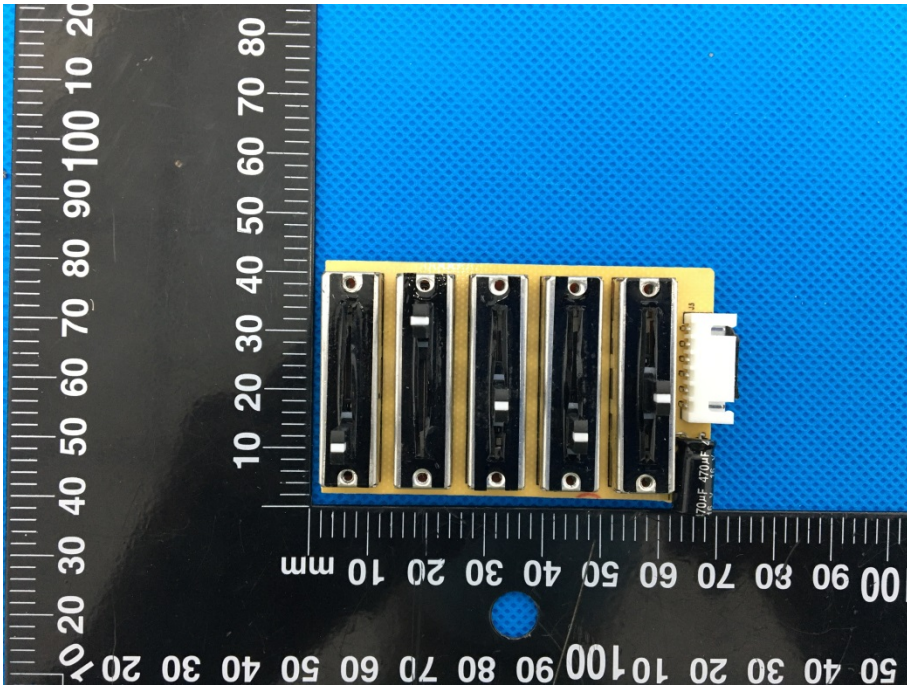
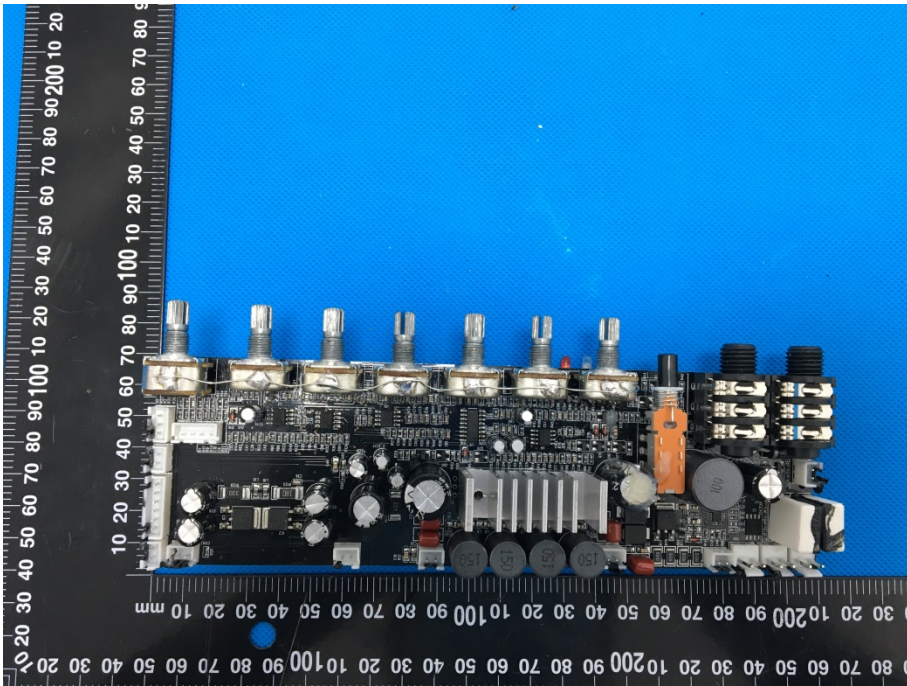


<p style="text-align: center;">Solder Board-Component View 1</p>	 A photograph of a black PCB populated with various electronic components. At the top, there is a long strip of components including several electrolytic capacitors and integrated circuits. Below this, there are two green PCBs, a yellow PCB with a transformer, and a blue PCB with a connector. A black ruler is placed vertically on the left side of the board, showing measurements in millimeters. The background is a blue textured surface.
<p style="text-align: center;">Solder Board-Component View 2</p>	 A close-up photograph of a blue PCB component. The component has a white connector on the top edge and several other connectors on the bottom edge. A black ruler is placed vertically on the left side of the component, showing measurements in millimeters. The background is a blue textured surface.

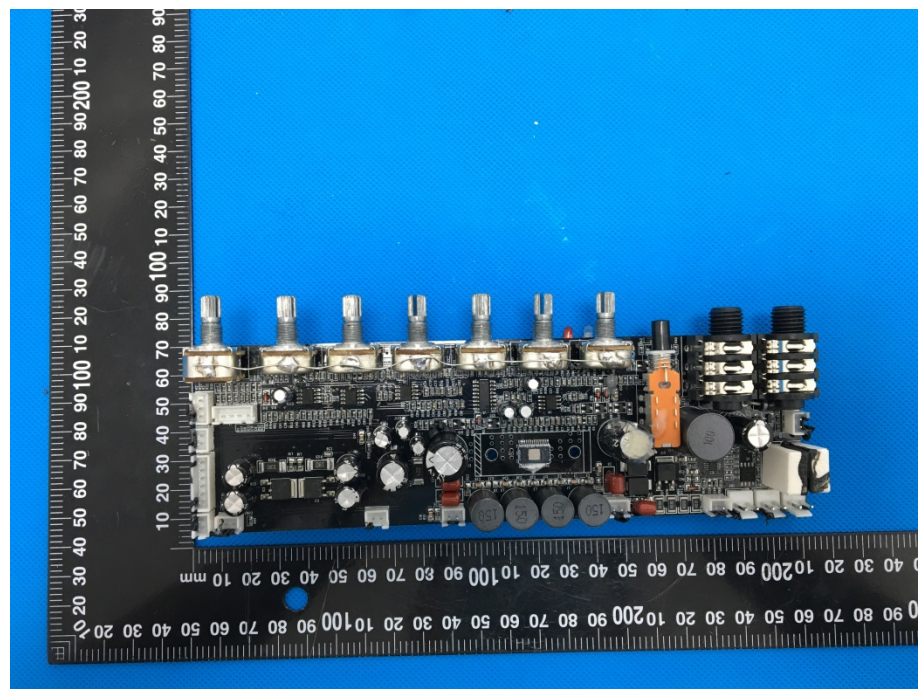
<p style="text-align: center;">Solder Board-Component View 3</p>	 <p>A photograph of a blue printed circuit board (PCB) component, labeled 'Solder Board-Component View 3'. The component is rectangular and features a USB-A connector on the left side and a larger connector on the right. It is placed on a black ruler with white markings for scale. The ruler shows measurements in millimeters, with the component's length being approximately 100 mm. The background is a blue textured surface.</p>
<p style="text-align: center;">Solder Board-Component View 4</p>	 <p>A photograph of a blue PCB component, labeled 'Solder Board-Component View 4'. The component is rectangular and features a series of pins along one edge. It is placed on a black ruler with white markings for scale. The ruler shows measurements in millimeters, with the component's length being approximately 100 mm. The background is a blue textured surface.</p>

<p style="text-align: center;">Solder Board-Component View 5</p>	 <p>A photograph showing a small black electronic component with a digital display and a battery icon, mounted on a blue PCB. The component is labeled 'CARD USB RECO REPLAY' and has a battery icon. A black ruler is placed below the component for scale, showing measurements in millimeters. The background is a blue textured surface.</p>
<p style="text-align: center;">Solder Board-Component View 6</p>	 <p>A photograph showing a green PCB component with a white connector and a black cable, mounted on a blue PCB. The component has several silver pins. A black ruler is placed below the component for scale, showing measurements in millimeters. The background is a blue textured surface.</p>

<p style="text-align: center;">Solder Board-Component View 7</p>	 A photograph of a small, rectangular yellow PCB component with several electronic components (resistors, capacitors, and a microcontroller) mounted on it. The component is placed on a blue textured surface. A black ruler with white markings is positioned vertically to the left of the component, showing measurements in millimeters. The ruler markings are oriented vertically, with 0 at the top and 100 at the bottom. The component is approximately 100 mm long and 20 mm wide.
<p style="text-align: center;">Solder Board-Component View 8</p>	 A photograph of a larger, rectangular green PCB component with numerous electronic components (resistors, capacitors, and a microcontroller) mounted on it. The component is placed on a blue textured surface. A black ruler with white markings is positioned vertically to the left of the component, showing measurements in millimeters. The ruler markings are oriented vertically, with 0 at the top and 100 at the bottom. The component is approximately 100 mm long and 40 mm wide.

<p style="text-align: center;">Solder Board-Component View 9</p>	 A photograph of a solder board component, labeled '9'. The component is a yellow PCB with five vertical slots, each containing a black component. A white connector is visible on the right side. The component is placed on a black ruler with white markings, and the background is a blue textured surface.
<p style="text-align: center;">Solder Board-Component View 10</p>	 A photograph of a solder board component, labeled '10'. The component is a complex PCB with various components, including several silver potentiometers, a large orange component, and various capacitors. The component is placed on a black ruler with white markings, and the background is a blue textured surface.

**Solder
Board-Component View
11**



**Solder
Board-Component View
12**

